

TIMBER MARKETING & MANAGEMENT INC.

Professional Forestry Consultants

P.O. Box 396
 Chesterfield, VA 23832
 Ph (804) 796-9622
 Fax (804) 796-9693
 www.tmmva.com

Sale Date:	March 19, 2020		
Time:	11:00 a. m.		
Day:	Thursday		
	Aaron	Aaron HW	Cooper
Total Vol./Acre:	20,907	6,786	23,978 B. F.
Pine Vol/Tree:	150	129	132 B. F.
Hdwd. Vol/Tree:	56	186	- B. F.

**CLEAR CUT SALE
 EXCELLENT ACCESS**

Having been employed by **Claudia Aaron and Carol Cooper** we solicit bids on all merchantable timber in the clear cut area being **55.5 +/- acres** and on blue marked timber only in the SMZ's being **1.5 +/- acres** and as shown on the attached map and located in **Pittsylvania County, Virginia**.

We cruised the pulpwood trees to be harvested as shown below. Our estimate of their volume is:

<u>Pulpwood</u>	<u>10% Aaron Pine</u>	<u>5% Aaron HW</u>	<u>10% Cooper</u>	<u>Combined Total</u>
Pine	41	30	28	99
Soft Hardwood	23	58	5	86
Hard Hardwood	3	106	7	116
Total:	67	194	40	301 Standard Cords

We cruised and/or 100% tree counted the sawtimber-size trees as shown below. Our estimate of their volume is:

<u>Sawtimber</u>	<u>10% Cruise Aaron Pine</u>	<u>100% Count Aaron HW</u>	<u>10% Cruise Cooper</u>	<u>Combined Total</u>
Loblolly Pine	416,500	6,600	287,700	710,800
Poplar	1,700	72,800		74,500
White Oak		31,600		31,600
Red Oak		28,400		28,400
Maple		14,400		14,400
Chestnut Oak		7,200		7,200
Virginia Pine		3,000		3,000
Black Cherry		1,900		1,900
Hickory		1,900		1,900
Gum		1,000		1,000
Ash		600		600
Misc. Hardwood		300		300
	418,200	169,700	287,700	875,600 Total B.F. Int 1/4" Scale

The above volumes are not guaranteed; however, care was taken in the field to assemble the above tables. You should note how your utilization practices may vary from the above and make any necessary adjustments.

CONDITIONS

1. The landowner assumes responsibility for compliance with the Virginia State Seed Tree Law.
2. A period of time of 2 years will be allowed to cut and remove the timber.
3. Roads **must** be maintained and restored to their original condition upon completion of the logging. Any newly constructed roads and decks must be left in a graded condition and must be seeded upon completion of logging. Any newly constructed haul roads, skid roads and log decks and all logging operations must be in accordance with the guidelines set out in the **Best Management Practices Manual** of the Virginia Department of Forestry.
4. No tops or laps will be allowed to remain in the streams, fields, buffers or over cutting boundaries. They must be pulled back immediately.
5. Only the blue marked trees are to be cut from Streamside Management Zones.
6. No logging will be permitted during excessively wet weather conditions as determined by Timber Marketing & Management, Inc. If logging is halted due to weather conditions, then an extension of time equal to the time lost will be granted.
7. A \$3,000.00 performance bond will be paid at closing and held by Timber Marketing & Management, Inc. to insure compliance with all BMP requirements, road maintenance and conditions of the Timber Purchase Contract.

Only sealed bids will be accepted and owners reserve the right to reject any or all bids. BIDS SHOULD BE SUBMITTED PRIOR TO THE TIME OF BID OPENING AND CAN BE SUBMITTED VIA: Mail to: Timber Marketing & Management, Inc. P. O. Box 396, Chesterfield, Virginia 23832 **OR** hand delivered to 9520 Ironbridge Road, Chesterfield, Virginia **OR** telephoned in to 804-796-9622 **OR** faxed to 804-796-9693 **OR** emailed to tmm4u@aol.com

All Bids should be submitted as a combined total for both tracts and on a lump-sum basis and must be received at this address no later than posted bid date and time as shown on the cover.

There will be no scheduled show trip of the tract; however, you may call and set an appointment or you may inspect the property at your own leisure.

Sincerely,
Timber Marketing & Management, Inc.



Matt Sandman, Area Manager
804-796-9622 Office
434-808-2102 Mobile

Aaron Tract Pine

Timber Marketing & Management, Inc.

Professional Forestry Consultants

P.O. Box 396

Chesterfield, VA 23832-0000

Phone: (804) 796-9622 • Fax: (804) 796-9693

Pulpwood Cruise: 10.0%

Sawtimber Cruise: 10.0%

Cruise Date: Thursday, February 20, 2020
 Owner's Name: Aaron
 County/State: Pittsylvania County, VA
 Acreage: 20+/-
 Cruise Type: Plot Cruise
 Harvest Type: Clear Cut
 Total BF/Acre: 20,907
 Pine Vol/Tree: 149.8
 Hardwood Vol/Tree: 56.0

Volume Legend:

- 1) Diameters shown in inches (DBH)
- 2) Logs measured in 16' increments
- 3) Sawtimber volumes are shown in thousands of board feet (MBF)
- 4) Volume scale used for each species of sawtimber is noted
- 5) Pulpwood volumes are shown in standard cords (128 cubic feet)

Comments:

Pulpwood

Standard Cord

Wood Classification

DBH	Pine		Soft Hardwood		Hard Hardwood		Cedar	
	# Trees	Volume	# Trees	Volume	# Trees	Volume	# Trees	Volume
6	160		7	310	12	70	3	
8	90		9	30	2			
10	150		25	50	7			
12			10	2				
Total	400	41	400	23	70	3		

Loblolly Pine - Sawtimber

International 1/4 Scale

Number of Logs

DBH	1-Log	2-Log	3-Log	4-Log	5-Log	# Trees	Volume	% of Total
10	220	130				350	15.6	3.7%
12	60	560	480			1,100	112.5	27.0%
14	10	110	650	30		800	143.7	34.5%
16		70	310	50		430	107.9	25.9%
18		10	40	20		70	24.0	5.8%
20			30			30	12.8	3.1%
Total	290	880	1,510	100		2,780	416.5	

Poplar - Sawtimber

International 1/4 Scale

Number of Logs

DBH	1-Log	2-Log	3-Log	4-Log	5-Log	# Trees	Volume	% of Total
12	30					30	1.7	100.0%
Total	30					30	1.7	

Sawtimber Volume by Timber Type

Timber Type	# Trees	Volume	Avg BF/Tree	% of Total
Hardwood	30	1.7	56.0	0.4%
Pine	2,780	416.5	149.8	99.6%
Total	2,810	418.1	148.8	

Sawtimber Volume by DBH

DBH	# Trees	Volume	Avg BF/Tree	% of Total
10	350	15.6	44.5	3.7%
12	1,130	114.2	101.0	27.3%
14	800	143.7	179.7	34.4%
16	430	107.9	251.0	25.8%
18	70	24.0	342.3	5.7%
20	30	12.8	427.0	3.1%
Total	2,810	418.1	148.8	

Sawtimber Volume by Species

Species	# Trees	Volume	Avg BF/Tree	% of Total
Loblolly Pine	2,780	416.5	149.8	99.6%
Poplar	30	1.7	56.0	0.4%
Total	2,810	418.1	148.8	

Aaron Tract Hardwood

Timber Marketing & Management, Inc.

Professional Forestry Consultants

P.O. Box 396

Chesterfield, VA 23832-0000

Phone: (804) 796-9622 • Fax: (804) 796-9693

Pulpwood Cruise: 5.0%

Sawtimber Cruise: 100.0%

Cruise Date: Thursday, February 20, 2020

Owner's Name: Aaron

County/State: Pittsylvania County, VA

Acreage: 25+/-

Cruise Type: Tree Count

Harvest Type: Clear Cut

Total BF/Acre: 6,786

Pine Vol/Tree: 128.4

Hardwood Vol/Tree: 185.8

Volume Legend:

- 1) Diameters shown in inches (DBH)
- 2) Logs measured in 16' increments
- 3) Sawtimber volumes are shown in thousands of board feet (MBF)
- 4) Volume scale used for each species of sawtimber is noted
- 5) Pulpwood volumes are shown in standard cords (128 cubic feet)

Comments:

Pulpwood

Standard Cord

Wood Classification								
Pine			Soft Hardwood		Hard Hardwood		Cedar	
DBH	# Trees	Volume	# Trees	Volume	# Trees	Volume	# Trees	Volume
6	320	14	200	8	300	12		
8	20	2	180	14	300	24		
10	80	13	120	16	320	43		
12			100	20	140	28		
Total	420	30	600	58	1,060	106		

Ash - Sawtimber

International 1/4 Scale

Number of Logs								
DBH	1-Log	2-Log	3-Log	4-Log	5-Log	# Trees	Volume	% of Total
14	1					1	0.1	15.0%
24		1				1	0.5	85.0%
Total	1	1				2	0.6	

Black Cherry - Sawtimber

International 1/4 Scale

Number of Logs								
DBH	1-Log	2-Log	3-Log	4-Log	5-Log	# Trees	Volume	% of Total
12	1					1	0.1	3.0%
14	10					10	0.8	43.8%
16	4					4	0.4	23.6%
18		1				1	0.2	13.1%
20		1				1	0.3	16.6%
Total	15	2				17	1.9	

Chestnut Oak - Sawtimber

International 1/4 Scale

Number of Logs								
DBH	1-Log	2-Log	3-Log	4-Log	5-Log	# Trees	Volume	% of Total
12	22					22	1.2	17.1%
14	15	5				20	2.0	27.0%
16	7	6				13	1.9	26.7%
18	4	1				5	0.8	11.4%
20	2	1				3	0.7	9.4%
22	1	1				2	0.6	8.4%
Total	51	14				65	7.2	

Gum - Sawtimber

International 1/4 Scale

Number of Logs								
DBH	1-Log	2-Log	3-Log	4-Log	5-Log	# Trees	Volume	% of Total
12	6					6	0.3	34.5%
14	1	1				2	0.2	23.0%
16	2	1				3	0.4	42.5%
Total	9	2				11	1.0	

Hickory - Sawtimber

International 1/4 Scale

Number of Logs								
DBH	1-Log	2-Log	3-Log	4-Log	5-Log	# Trees	Volume	% of Total
12	4					4	0.2	12.0%
14	2					2	0.2	8.9%
16	4	1				5	0.6	34.1%
20		1				1	0.3	16.8%
22			1			1	0.5	28.2%
Total	10	2	1			13	1.9	

Loblolly/Shortleaf Pine - Sawtimber

International 1/4 Scale

Number of Logs								
DBH	1-Log	2-Log	3-Log	4-Log	5-Log	# Trees	Volume	% of Total
10	2					2	0.1	1.1%
12	1	2	1			4	0.4	5.5%
14		3	6	1		10	1.8	26.6%
16			6	4		10	2.8	41.8%
18			1	2		3	1.1	17.3%
20				1		1	0.5	7.8%
Total	3	5	14	8		30	6.6	

Maple - Sawtimber

International 1/4 Scale

Number of Logs								
DBH	1-Log	2-Log	3-Log	4-Log	5-Log	# Trees	Volume	% of Total
12	30					30	1.7	11.7%
14	34					34	2.8	19.7%
16	22	3				25	3.0	21.1%
18	15	3				18	2.9	20.2%
20	6	1				7	1.4	9.8%
22	1	1				2	0.6	4.2%
24	2	1				3	1.0	7.0%
28			1			1	0.9	6.3%
Total	110	9	1			120	14.4	

Aaron Tract Hardwood

Timber Marketing & Management, Inc.

Cruise Date: Thursday, February 20, 2020
 Owner's Name: Aaron
 County/State: Pittsylvania County, VA

Miscellaneous Hardwood - Sawtimber International 1/4 Scale

Number of Logs								
DBH	1-Log	2-Log	3-Log	4-Log	5-Log	# Trees	Volume	% of Total
12	1					1	0.1	20.0%
16	2					2	0.2	80.0%
Total	3					3	0.3	

Poplar - Sawtimber International 1/4 Scale

Number of Logs								
DBH	1-Log	2-Log	3-Log	4-Log	5-Log	# Trees	Volume	% of Total
12	64					64	3.6	4.9%
14	20	33				53	6.3	8.7%
16	7	27	13			47	9.2	12.7%
18	2	16	20			38	11.0	15.1%
20	2	21	23	1		47	17.3	23.7%
22	2	9	6			17	7.1	9.7%
24		3	5	1		9	5.4	7.4%
26		1	2	1		4	3.0	4.2%
28		3				3	2.0	2.7%
30			3			3	3.2	4.3%
32		1	1			2	2.1	2.9%
36		1	1			2	2.7	3.7%
Total	97	115	74	3		289	72.8	

Red Oak - Sawtimber International 1/4 Scale

Number of Logs								
DBH	1-Log	2-Log	3-Log	4-Log	5-Log	# Trees	Volume	% of Total
12	25					25	1.4	4.9%
14	20	18				38	4.2	14.8%
16	15	21	3			39	6.4	22.6%
18	10	10				20	3.9	13.8%
20	4	7	1			12	3.3	11.8%
22	2	5	1			8	2.9	10.2%
24	3	4				7	2.7	9.4%
26		1				1	0.6	2.0%
28	1	1				2	1.0	3.6%
30		1				1	0.8	2.7%
32			1			1	1.2	4.3%
Total	80	68	6			154	28.4	

Virginia Pine - Sawtimber International 1/4 Scale

Number of Logs								
DBH	1-Log	2-Log	3-Log	4-Log	5-Log	# Trees	Volume	% of Total
10	12					12	0.4	14.2%
12	17	5				22	1.4	46.5%
14	7	3				10	1.0	33.0%
16		1				1	0.2	6.3%
Total	36	9				45	3.0	

White Oak - Sawtimber International 1/4 Scale

Number of Logs								
DBH	1-Log	2-Log	3-Log	4-Log	5-Log	# Trees	Volume	% of Total
12	42					42	2.4	7.4%
14	25	23				48	5.3	16.8%
16	18	21	7			46	7.8	24.7%
18	9	10	4			23	5.1	16.2%
20	2	9	1			12	3.6	11.4%
22	3	1	2			6	2.1	6.7%
24	1	4				5	2.1	6.8%
26		2				2	1.1	3.5%
28		2				2	1.3	4.1%
30		1				1	0.8	2.4%
Total	100	73	14			187	31.6	

Aaron Tract Hardwood

Timber Marketing & Management, Inc.

Cruise Date: Thursday, February 20, 2020
 Owner's Name: Aaron
 County/State: Pittsylvania County, VA

Sawtimber Volume by Timber Type

<u>Timber Type</u>	<u># Trees</u>	<u>Volume</u>	<u>Avg BF/Tree</u>	<u>% of Total</u>
Hardwood	861	160.0	185.8	94.3%
Pine	75	9.6	128.4	5.7%
Total	936	169.6	181.2	

Sawtimber Volume by DBH

<u>DBH</u>	<u># Trees</u>	<u>Volume</u>	<u>Avg BF/Tree</u>	<u>% of Total</u>
10	14	0.5	36.0	0.3%
12	221	12.7	57.4	7.5%
14	228	24.7	108.2	14.5%
16	195	33.1	169.8	19.5%
18	108	25.1	232.7	14.8%
20	84	27.5	327.0	16.2%
22	36	13.8	384.7	8.2%
24	25	11.7	467.4	6.9%
26	7	4.7	671.0	2.8%
28	8	5.2	649.4	3.1%
30	5	4.7	933.2	2.8%
32	3	3.3	1,098.7	1.9%
36	2	2.7	1,346.0	1.6%
Total	936	169.6	181.2	

Sawtimber Volume by Species

<u>Species</u>	<u># Trees</u>	<u>Volume</u>	<u>Avg BF/Tree</u>	<u>% of Total</u>
Ash	2	0.6	276.0	0.3%
Black Cherry	17	1.9	111.5	1.1%
Chestnut Oak	65	7.2	111.0	4.3%
Gum	11	1.0	88.5	0.6%
Hickory	13	1.9	143.8	1.1%
Loblolly/Shortleaf Pine	30	6.6	219.8	3.9%
Maple	120	14.4	119.6	8.5%
Miscellaneous Hardwood	3	0.3	93.3	0.2%
Poplar	289	72.8	251.9	42.9%
Red Oak	154	28.4	184.6	16.8%
Virginia Pine	45	3.0	67.5	1.8%
White Oak	187	31.6	169.2	18.6%
Total	936	169.6	181.2	

Cooper Tract - Ivory Branch

Timber Marketing & Management, Inc.

Professional Forestry Consultants

P.O. Box 396

Chesterfield, VA 23832-0000

Phone: (804) 796-9622 • Fax: (804) 796-9693

Pulpwood Cruise: 10.0%

Sawtimber Cruise: 10.0%

Cruise Date: Thursday, February 20, 2020
 Owner's Name: Carol Cooper
 County/State: Pittsylvania County, VA
 Acreage: 12+/-
 Cruise Type: Plot Cruise
 Harvest Type: Clear Cut
 Total BF/Acre: 23,978
 Pine Vol/Tree: 132.0

Volume Legend:

- 1) Diameters shown in inches (DBH)
- 2) Logs measured in 16' increments
- 3) Sawtimber volumes are shown in thousands of board feet (MBF)
- 4) Volume scale used for each species of sawtimber is noted
- 5) Pulpwood volumes are shown in standard cords (128 cubic feet)

Comments:

Pulpwood

Standard Cord

DBH	Wood Classification							
	Pine		Soft Hardwood		Hard Hardwood		Cedar	
	# Trees	Volume	# Trees	Volume	# Trees	Volume	# Trees	Volume
6	30	1	90	4	40	2		
8	80	8	20	2	20	2		
10	110	18			30	4		
Total	220	28	110	5	90	7		

Loblolly Pine - Sawtimber

International 1/4 Scale

DBH	Number of Logs					# Trees	Volume	% of Total
	1-Log	2-Log	3-Log	4-Log	5-Log			
10	240	250				490	23.4	8.1%
12	20	300	510			830	89.9	31.3%
14	10	50	580	10		650	117.9	41.0%
16			180	10		190	49.1	17.1%
18			10	10		20	7.4	2.6%
Total	270	600	1,280	30		2,180	287.7	

Sawtimber Volume by Timber Type

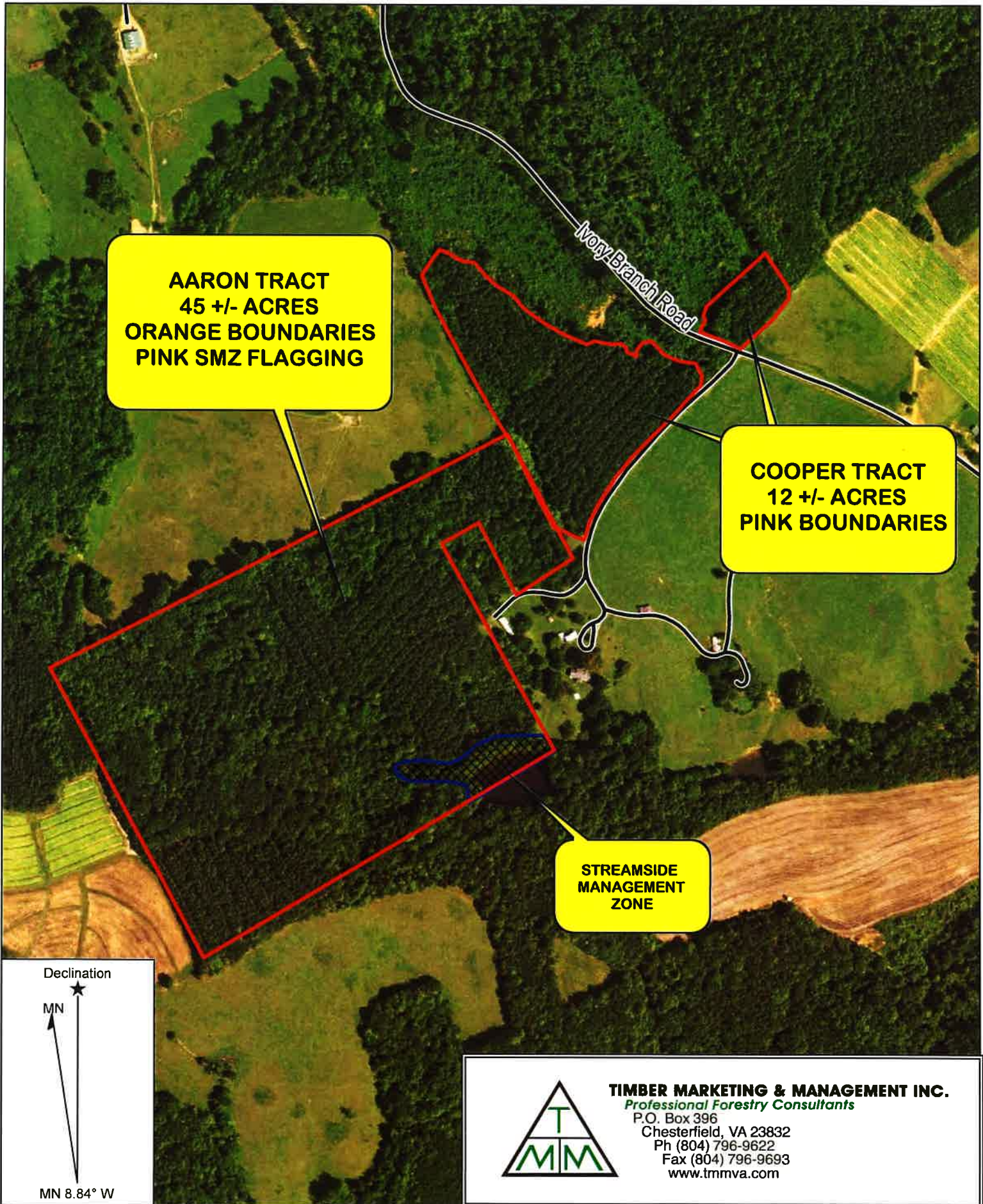
Timber Type	# Trees	Volume	Avg BF/Tree	% of Total
Pine	2,180	287.7	132.0	100.0%
Total	2,180	287.7	132.0	

Sawtimber Volume by DBH

DBH	# Trees	Volume	Avg BF/Tree	% of Total
10	490	23.4	47.7	8.1%
12	830	89.9	108.3	31.3%
14	650	117.9	181.4	41.0%
16	190	49.1	258.6	17.1%
18	20	7.4	369.0	2.6%
Total	2,180	287.7	132.0	

Sawtimber Volume by Species

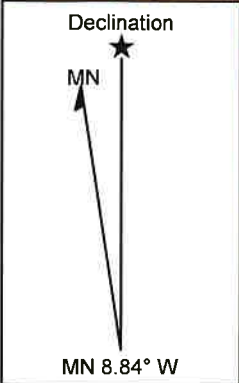
Species	# Trees	Volume	Avg BF/Tree	% of Total
Loblolly Pine	2,180	287.7	132.0	100.0%
Total	2,180	287.7	132.0	



**AARON TRACT
45 +/- ACRES
ORANGE BOUNDARIES
PINK SMZ FLAGGING**

**COOPER TRACT
12 +/- ACRES
PINK BOUNDARIES**

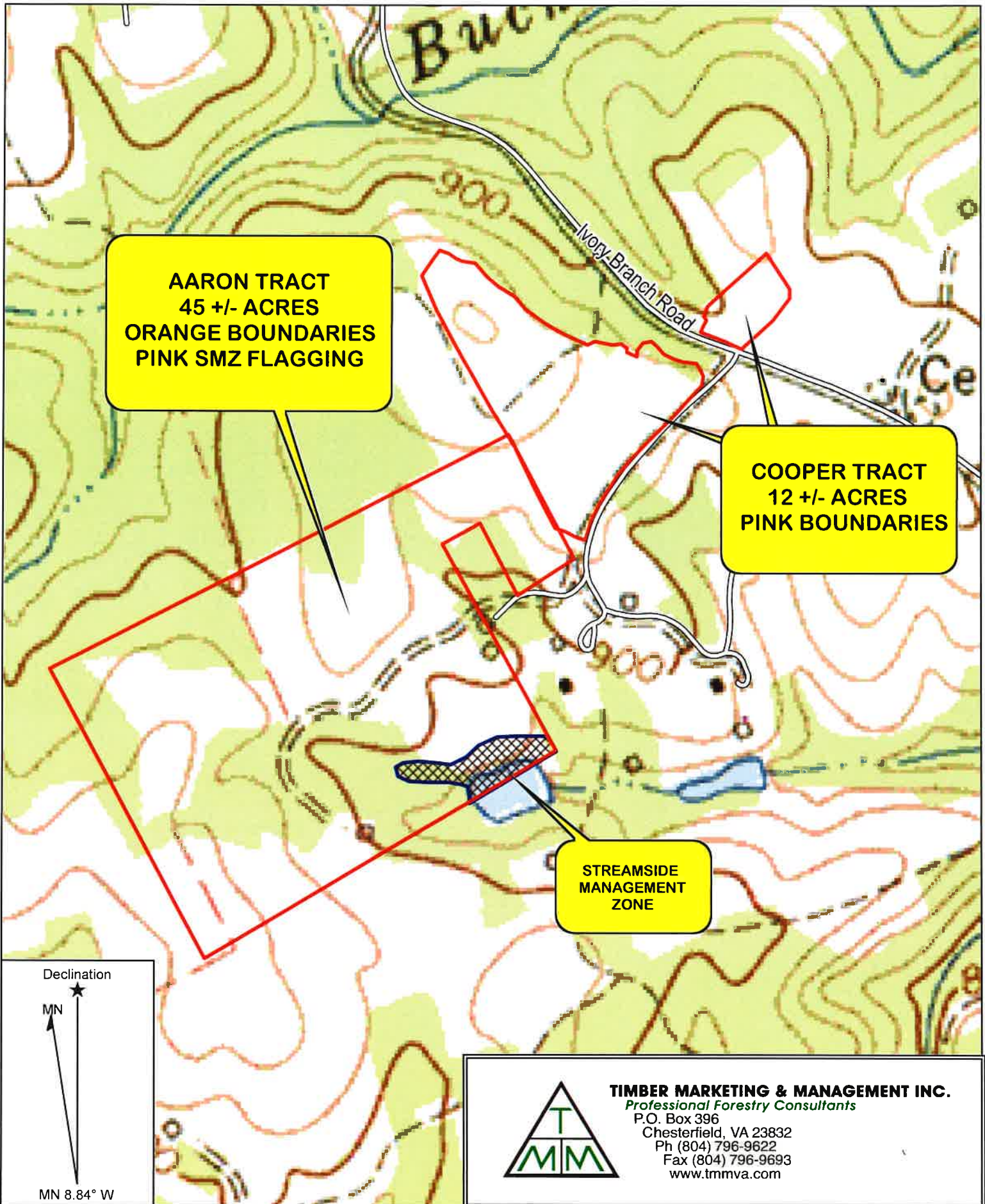
**STREAMSIDE
MANAGEMENT
ZONE**




TIMBER MARKETING & MANAGEMENT INC.
Professional Forestry Consultants
 P.O. Box 396
 Chesterfield, VA 23832
 Ph (804) 796-9622
 Fax (804) 796-9693
 www.tmmva.com

Name: Aaron/Cooper Tracts
 Date: February 25, 2020
 Scale: 1 inch = 458 ft.

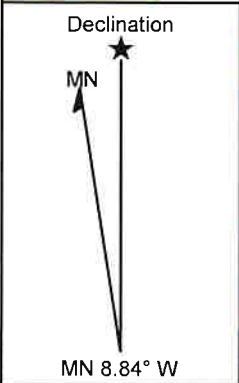
Location: Pittsylvania, VA



AARON TRACT
45 +/- ACRES
ORANGE BOUNDARIES
PINK SMZ FLAGGING

COOPER TRACT
12 +/- ACRES
PINK BOUNDARIES

STREAMSIDE
MANAGEMENT
ZONE

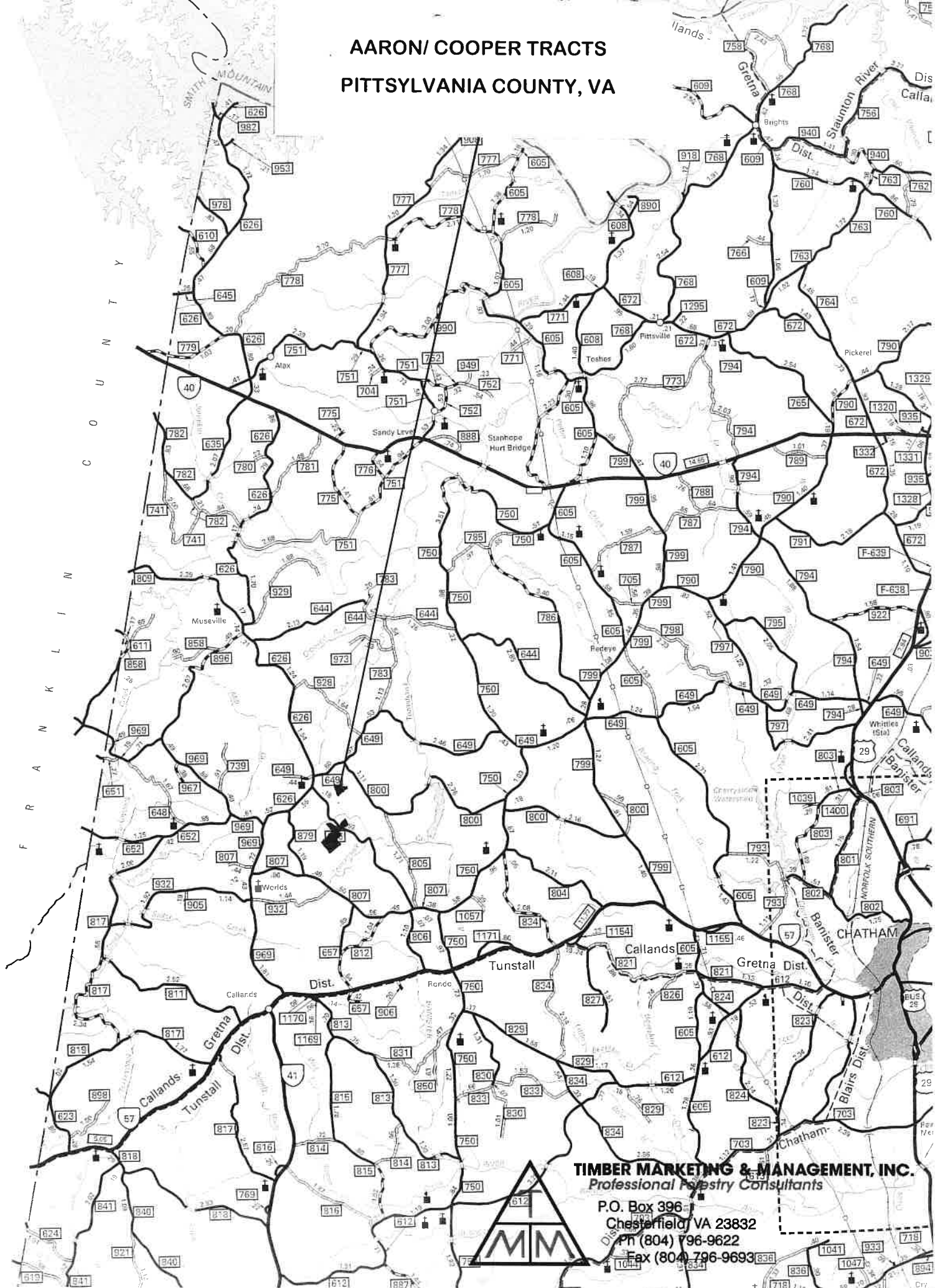


TIMBER MARKETING & MANAGEMENT INC.
Professional Forestry Consultants
 P.O. Box 396
 Chesterfield, VA 23832
 Ph (804) 796-9622
 Fax (804) 796-9693
 www.tmmva.com

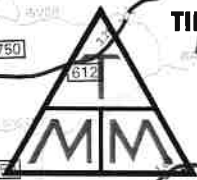
Name: Aaron/Cooper Tracts
 Date: February 25, 2020
 Scale: 1 inch = 458 ft.

Location: Pittsylvania, VA

**AARON/ COOPER TRACTS
PITTSYLVANIA COUNTY, VA**



TIMBER MARKETING & MANAGEMENT, INC.
Professional Forestry Consultants



P.O. Box 396
Chesterfield VA 23832
Ph (804) 796-9622
Fax (804) 796-9693