**TIMBER MARKETING & MANAGEMENT INC.***Professional Forestry Consultants*

P.O. Box 396
Chesterfield, VA 23832
Ph (804) 796-9622
Fax (804) 796-9693
www.tmmva.com

Sale Date:	January 16, 2020
Time:	11:00 a.m.
Day:	Thursday
Total Vol./Acre:	4,367 B. F.
Pine Vol/Tree:	165 B. F.
Hdwd. Vol/Tree:	468 B. F.

SELECT CUT SALE EXCELLENT QUALITY HARDWOOD

Having been employed by **Karen Anderson and Joseph Anderson et als** we solicit bids on blue marked timber only on **332 +/- acres** in **Powhatan County, Virginia** and as shown on the attached map.

We made a 100% tree count of the sawtimber-size trees. Our estimate of their volume is:

SAWTIMBER

Poplar	677,900	Ash	16,500
White Oak	344,400	Loblolly Pine	11,600
Red Oak	136,800	Maple	5,000
Northern Red Oak	129,800	Virginia Pine	2,100
Gum	67,500	Walnut	800
Hickory	57,200	Sycamore	400

Total: 1,450,000 BF Int 1/4" Scale

VENEER

Included in the volumes are high quality trees that, from our review, will be of high enough quality that a veneer cut can be obtained. The veneer volume is estimated to be:

Red	611 BF Doyle Scale
White Oak	7,883 BF Doyle Scale

The above volumes are not guaranteed; however, care was taken in the field to assemble the above tables. You should note how your utilization practices may vary from the above and make any necessary adjustments.

CONDITIONS

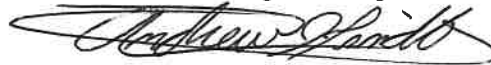
1. A period of time of **24 months** will be allowed to cut and remove the timber.
2. Roads **must** be maintained and restored to their original condition upon completion of the logging. Any newly constructed roads and decks must be left in a graded condition and must be seeded upon completion of logging. Any newly constructed haul roads, skid roads and log decks and all logging operations must be in accordance with the guidelines set out in the **Best Management Practices Manual** of the Virginia Department of Forestry.
3. No tops or laps will be allowed to remain in the streams, fields, buffers or over cutting boundaries. They must be pulled back immediately.
4. No logging will be permitted during excessively wet weather conditions as determined by Timber Marketing & Management, Inc. If logging is halted due to weather conditions, then an extension of time equal to the time lost will be granted.
5. A \$4,000.00 performance bond will be paid at closing and held by Timber Marketing & Management, Inc. to insure compliance with all BMP requirements, road maintenance and conditions of the Timber Purchase Contract.
6. Owners will accept the following payment terms: 50% of purchase price due at closing. 50% of purchase price due 90 days after closing or when logging begins, whichever occurs first.

Only sealed bids will be accepted and owners reserve the right to reject any or all bids. BIDS SHOULD BE SUBMITTED PRIOR TO THE TIME OF BID OPENING AND CAN BE SUBMITTED VIA: Mail to: Timber Marketing & Management, Inc. P. O. Box 396, Chesterfield, Virginia 23832 **OR** hand delivered to 9520 Ironbridge Road, Chesterfield, Virginia **OR** telephoned in to 804-796-9622 **OR** faxed to 804-796-9693 **OR** emailed to tmm4u@aol.com Bids must be made on a lump-sum basis and must be received at this address no later than the posted bid date and time as shown on the cover. Closing shall take place within 30 days of bid acceptance.

There will be no scheduled show trip of the tract; however, you may call and set an appointment or you may inspect the property at your own leisure.

An electronic copy of this sale notice, including maps and volumes, is available for download and viewing on our website at www.tmmva.com under the Timber Sale Notices section.

Sincerely,
Timber Marketing & Management, Inc.



Andrew J. Lindberg, Vice President
804-796-9622 Office
804-338-8436 Mobile

Anderson Tract Select Cut

Timber Marketing & Management, Inc.

Professional Forestry Consultants

P.O. Box 396

Chesterfield, VA 23832-0000

Phone: (804) 796-9622 • Fax: (804) 796-9693

Sawtimber Cruise: 100.0%

Veneer Cruise: 100.0%

Cruise Date: Friday, November 01, 2019
 Owner's Name: Anderson
 County/State: Powhatan County, VA
 Acreage: 332+/-
 Cruise Type: Tree Count
 Harvest Type: Select Cut
 Total BF/Acre: 4,367
 Pine Vol/Tree: 164.6
 Hardwood Vol/Tree: 467.8

Volume Legend:

- 1) Diameters shown in inches (DBH)
- 2) Logs measured in 16' increments
- 3) Sawtimber volumes are shown in thousands of board feet (MBF)
- 4) Volume scale used for each species of sawtimber is noted
- 5) Pulpwood volumes are shown in standard cords (128 cubic feet)

Comments:

Ash - Sawtimber International 1/4 Scale

Number of Logs								
DBH	1-Log	2-Log	3-Log	4-Log	5-Log	# Trees	Volume	% of Total
14	11	1				12	1.1	6.4%
16	21	5				26	3.3	20.2%
18	5	11				16	3.4	21.1%
20	4	9	1			14	4.0	24.3%
22		7				7	2.7	16.6%
24		1	1			2	1.1	6.8%
30		1				1	0.8	4.6%
Total	41	35	2			78	16.4	

Black Walnut - Sawtimber International 1/4 Scale

Number of Logs								
DBH	1-Log	2-Log	3-Log	4-Log	5-Log	# Trees	Volume	% of Total
20		1				1	0.3	40.1%
24		1				1	0.5	59.9%
Total		2				2	0.8	

Gum - Sawtimber International 1/4 Scale

Number of Logs								
DBH	1-Log	2-Log	3-Log	4-Log	5-Log	# Trees	Volume	% of Total
16		3	2	1		6	1.4	2.1%
18		7	23	1		31	9.9	14.6%
20		12	43	9		64	26.7	39.6%
22		3	22	5		30	16.0	23.7%
24			15	2		17	11.2	16.6%
26			3			3	2.3	3.4%
Total		25	108	18		151	67.5	

Hickory - Sawtimber International 1/4 Scale

Number of Logs								
DBH	1-Log	2-Log	3-Log	4-Log	5-Log	# Trees	Volume	% of Total
16	1	6				7	1.3	2.2%
18	2	28	15			45	12.3	21.4%
20	1	28	20	4		53	19.6	34.2%
22	1	9	13	1		24	11.2	19.6%
24		3	10	1		14	8.6	15.1%
26		5	2			7	4.3	7.6%
Total	5	79	60	6		150	57.2	

Loblolly Pine - Sawtimber International 1/4 Scale

Number of Logs								
DBH	1-Log	2-Log	3-Log	4-Log	5-Log	# Trees	Volume	% of Total
10	9	1				10	0.4	3.3%
12	3	6	1			10	0.8	7.3%
14		1	20	1		22	4.1	35.2%
16		2	13	2		17	4.3	37.3%
18			3			3	1.0	8.7%
20			1			1	0.4	3.7%
22			1			1	0.5	4.6%
Total	12	10	39	3		64	11.6	

Maple - Sawtimber International 1/4 Scale

Number of Logs								
DBH	1-Log	2-Log	3-Log	4-Log	5-Log	# Trees	Volume	% of Total
18		2	1			3	0.8	16.8%
20	1	1				2	0.5	10.0%
22	1	1				2	0.6	12.3%
24		3	1			4	2.1	41.4%
26	1					1	0.3	6.4%
28		1				1	0.7	13.2%
Total	3	8	2			13	5.0	

Anderson Tract Select Cut

Timber Marketing & Management, Inc.

Cruise Date: Friday, November 01, 2019
 Owner's Name: Anderson
 County/State: Powhatan County, VA

Northern Red Oak - Sawtimber International 1/4 Scale

DBH	Number of Logs					# Trees	Volume	% of Total
	1-Log	2-Log	3-Log	4-Log	5-Log			
16	1	1	1			3	0.6	0.4%
18	2	28	7			37	9.6	7.4%
20	3	45	23			71	24.5	18.9%
22	3	42	33	1		79	35.0	26.9%
24		34	29	2		65	36.2	27.9%
26		11	13			24	16.1	12.4%
28		2	4			6	4.9	3.8%
30		1	1			2	1.8	1.4%
32			1			1	1.2	0.9%
Total	9	164	112	3		288	129.8	

Poplar - Sawtimber International 1/4 Scale

DBH	Number of Logs					# Trees	Volume	% of Total
	1-Log	2-Log	3-Log	4-Log	5-Log			
16		3				3	0.6	0.1%
18		25	71	17		113	36.9	5.4%
20		67	176	60	4	307	129.2	19.1%
22	2	44	256	130	6	438	240.0	35.4%
24	2	18	124	77	2	223	150.1	22.1%
26		4	58	26	2	90	73.1	10.8%
28		5	18	12		35	32.7	4.8%
30		2	3	3		8	8.5	1.3%
32			2	3		5	6.9	1.0%
Total	4	168	708	328	14	1,222	677.9	

Red Oak - Sawtimber International 1/4 Scale

DBH	Number of Logs					# Trees	Volume	% of Total
	1-Log	2-Log	3-Log	4-Log	5-Log			
16	1					1	0.1	0.1%
18	3	32	10			45	11.7	8.6%
20	9	62	43	3		117	41.0	30.0%
22	3	48	47	1		99	44.7	32.7%
24		22	25			47	26.4	19.3%
26		10	2			12	7.1	5.2%
28		1	1	1		3	2.7	1.9%
30	1					1	0.4	0.3%
32		1				1	0.9	0.6%
38			1			1	1.8	1.3%
Total	17	176	129	5		327	136.8	

Sycamore - Sawtimber International 1/4 Scale

DBH	Number of Logs					# Trees	Volume	% of Total
	1-Log	2-Log	3-Log	4-Log	5-Log			
22		1				1	0.4	100.0%
Total		1				1	0.4	

Virginia Pine - Sawtimber International 1/4 Scale

DBH	Number of Logs					# Trees	Volume	% of Total
	1-Log	2-Log	3-Log	4-Log	5-Log			
10	3					3	0.1	5.2%
12	5	1				6	0.4	17.9%
14	3	2	1			6	0.7	34.5%
16		2	1			3	0.6	30.6%
18		1				1	0.2	11.9%
Total	11	6	2			19	2.1	

White Oak - Sawtimber International 1/4 Scale

DBH	Number of Logs					# Trees	Volume	% of Total
	1-Log	2-Log	3-Log	4-Log	5-Log			
14		1				1	0.1	0.0%
16		8				8	1.5	0.4%
18	6	97	54			157	43.1	12.5%
20	8	136	124	8		276	101.2	29.4%
22	1	144	124	10		279	127.8	37.1%
24		40	50	1		91	51.7	15.0%
26		7	12			19	13.1	3.8%
28		3	2			5	3.8	1.1%
30			2			2	2.1	0.6%
Total	15	436	368	19		838	344.4	

Anderson Tract Select Cut

Timber Marketing & Management, Inc.

Cruise Date: Friday, November 01, 2019
 Owner's Name: Anderson
 County/State: Powhatan County, VA

Sawtimber Volume by Timber Type

Timber Type	# Trees	Volume	Avg BF/Tree	% of Total
Hardwood	3,070	1,436.2	467.8	99.1%
Pine	83	13.7	164.6	0.9%
Total	3,153	1,449.8	459.8	

Sawtimber Volume by DBH

DBH	# Trees	Volume	Avg BF/Tree	% of Total
10	13	0.5	37.8	0.0%
12	16	1.2	75.8	0.1%
14	41	6.0	146.1	0.4%
16	74	13.7	184.5	0.9%
18	451	128.9	285.9	8.9%
20	906	347.4	383.5	24.0%
22	960	478.8	498.8	33.0%
24	464	287.9	620.5	19.9%
26	156	116.4	746.0	8.0%
28	50	44.7	893.9	3.1%
30	14	13.6	969.4	0.9%
32	7	8.9	1,278.4	0.6%
38	1	1.8	1,772.0	0.1%
Total	3,153	1,449.8	459.8	

Sawtimber Volume by Species

Species	# Trees	Volume	Avg BF/Tree	% of Total
Ash	78	16.4	209.8	1.1%
Black Walnut	2	0.8	391.5	0.1%
Gum	151	67.5	446.8	4.7%
Hickory	150	57.2	381.6	3.9%
Loblolly Pine	64	11.6	181.0	0.8%
Maple	13	5.0	381.2	0.3%
Northern Red Oak	288	129.8	450.8	9.0%
Poplar	1,222	677.9	554.8	46.8%
Red Oak	327	136.8	418.3	9.4%
Sycamore	1	0.4	387.0	0.0%
Virginia Pine	19	2.1	109.5	0.1%
White Oak	838	344.4	411.0	23.8%
Total	3,153	1,449.8	459.8	

Red Oak - Veneer

Doyle (Butt Log Scale)

DBH	Butt Log Length								# Logs	Volume	% of Total
	8'	10'	12'	14'	16'	18'	20'	22'			
20					1				1	144	23.6%
22					1				1	185	30.3%
26					1				1	282	46.2%
Total					3				3	611	

White Oak - Veneer

Doyle (Butt Log Scale)

DBH	Butt Log Length								# Logs	Volume	% of Total
	8'	10'	12'	14'	16'	18'	20'	22'			
18		1			1				2	166	2.1%
20	1	3	11		4				19	2,129	27.0%
22		5	9		10				24	3,612	45.8%
24	1	2	2		2				7	1,267	16.1%
26		1	1		1				3	709	9.0%
Total	2	12	23		18				55	7,883	

Veneer Tag List

Tag	Species	DBH	Butt Log Length
A1	White Oak	22	10'
A10	White Oak	22	12'
A11	White Oak	20	16'
A12	White Oak	20	12'
A13	White Oak	20	12'
A14	White Oak	22	16'
A15	White Oak	20	12'
A16	White Oak	22	16'
A17	White Oak	22	12'
A18	White Oak	24	10'
A19	White Oak	22	16'
A1A	Red Oak	26	16'
A2	White Oak	24	12'
A20	White Oak	22	12'
A21	White Oak	20	16'
A22	White Oak	22	16'
A23	White Oak	20	16'
A24	White Oak	24	12'
A25	White Oak	20	12'
A26	White Oak	20	10'
A27	White Oak	22	12'
A28	White Oak	22	16'
A29	White Oak	20	12'
A2A	White Oak	22	12'
A3	White Oak	20	12'
A30	White Oak	20	12'
A31	White Oak	20	16'
A32	White Oak	20	12'
A33	Red Oak	20	16'
A34	White Oak	18	16'

Anderson Tract Select Cut

Timber Marketing & Management, Inc.

Cruise Date: Friday, November 01, 2019
 Owner's Name: Anderson
 County/State: Powhatan County, VA

A35	White Oak	22	12'
A36	White Oak	22	16'
A37	White Oak	26	16'
A3A	White Oak	22	12'
A4	White Oak	22	10'
A6	White Oak	20	12'
A7	White Oak	22	16'
A8	White Oak	22	16'
A9	White Oak	22	12'
G1	White Oak	22	10'
G2	White Oak	22	12'
G3	White Oak	20	10'
G4	White Oak	20	10'
M1	White Oak	26	10'
M10	White Oak	20	12'
M11	White Oak	24	16'
M12	White Oak	26	12'
M13	White Oak	22	16'
M2	White Oak	22	10'
M3	White Oak	22	16'
M4	Red Oak	22	16'
M5	White Oak	20	8'
M6	White Oak	22	10'
M7	White Oak	20	12'
M8	White Oak	24	16'
M9	White Oak	24	8'
S1	White Oak	18	10'
S2	White Oak	24	10'

Veneer Volume by DBH

DBH	# Trees	Volume	Avg BF/Log	% of Total
18	2	166	83.0	2.0%
20	20	2,273	113.7	26.8%
22	25	3,797	151.9	44.7%
24	7	1,267	181.0	14.9%
26	4	991	247.8	11.7%
Total	58	8,494	146.4	

Veneer Volume by Species

Species	# Trees	Volume	Avg BF/Log	% of Total
Red Oak	3	611	203.7	7.2%
White Oak	55	7,883	143.3	92.8%
Total	58	8,494	146.4	

ANDERSON TRACT
Powhatan Co., Va.
746+/- Acres

Access Rd.
to Rt. 13
(1.14 Miles)

7+/- Ac.
Cutover

59+/- Ac.

11+/- Ac.

Property Boundaries
Flagged in Pink

Select-Cut Areas
Outlined in Yellow
332+/- Acres

Access Road
to Rt. 609
Giles Bridge Rd.
(0.9 Miles)

CUTOVER
254+/- AC

Declination

MN

MN 9.93° W



TIMBER MARKETING & MANAGEMENT INC.
Professional Forestry Consultants
P.O. Box 396
Chesterfield, VA 23832
Ph (804) 796-9622
Fax (804) 796-9693
www.tmmva.com

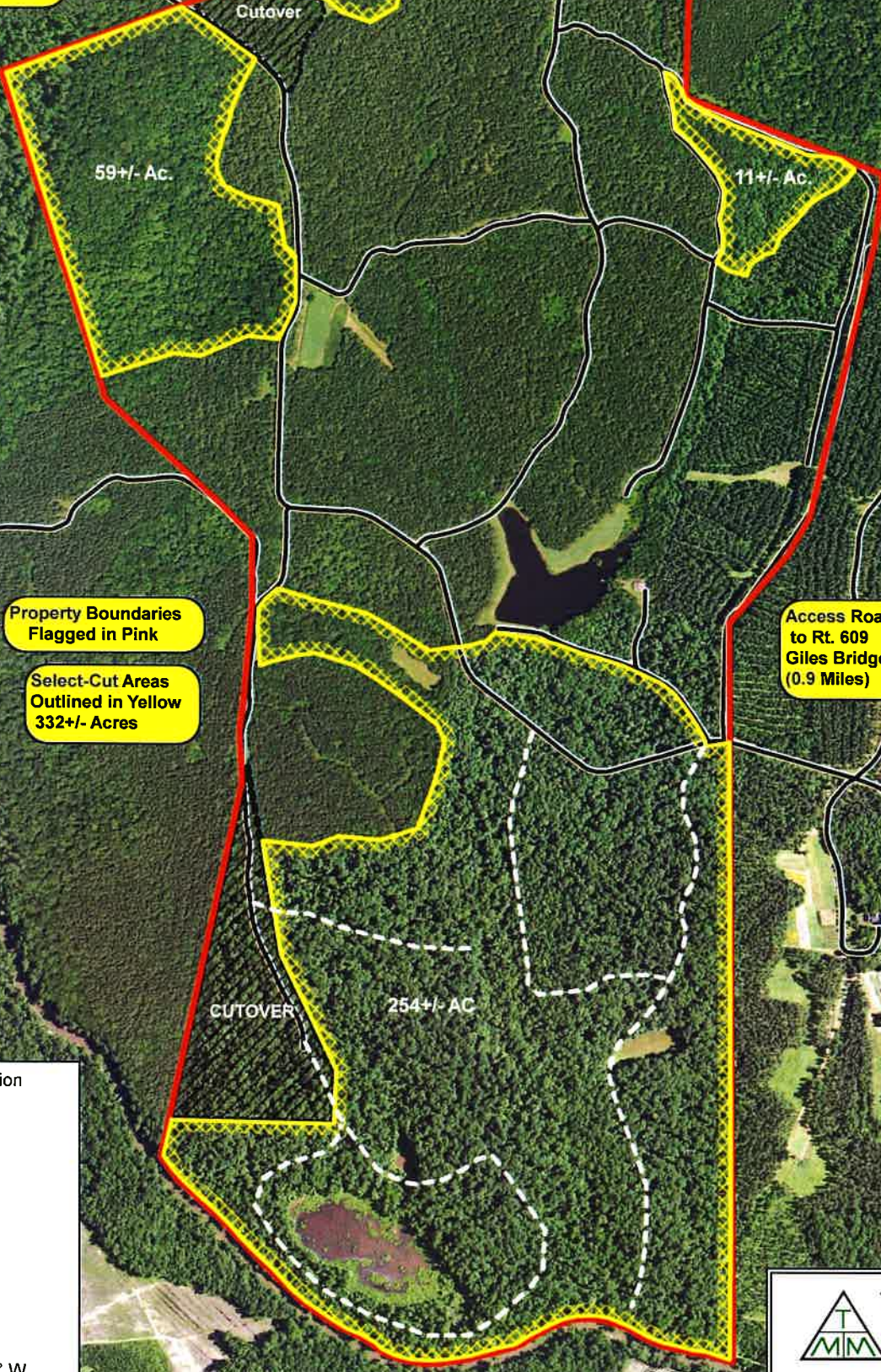
(C) Copyright 2016, Trimble Navigation Limited, OpenStreetMap contributors

Name: ANDERSON TRACT
Date: 12/16/19
Scale: 1 inch = 1,000 ft.

Location: 037° 29' 55.9445" N, 077° 58' 58.5795" W
332+/- Acre Select-Cut

ANDERSON TRACT
Powhatan Co., Va.
746+/- Acres

Access Rd.
to Rt. 13
(1.14 Miles)



Property Boundaries
Flagged in Pink

Select-Cut Areas
Outlined in Yellow
332+/- Acres

Access Road
to Rt. 609
Giles Bridge Rd.
(0.9 Miles)

Declination

MN

MN 9.93° W



TIMBER MARKETING & MANAGEMENT INC.
Professional Forestry Consultants
P.O. Box 396
Chesterfield, VA 23832
Ph (804) 795-9622
Fax (804) 796-9693
www.tmmva.com

(C) Copyright 2016

Name: ANDERSON TRACT
Date: 12/16/19
Scale: 1 inch = 1,000 ft.

Location: 037° 29' 56.4519" N, 077° 59' 00.6853" W
332+/- Acre Select-Cut

