

TIMBER MARKETING & MANAGEMENT INC.

Professional Forestry Consultants

P.O. Box 396
 Chesterfield, VA 23832
 Ph (804) 796-9622
 Fax (804) 796-9693
 www.tmmva.com

Sale Date:	July 28, 2022
Time:	11:00 a.m.
Day:	Thursday
Total Vol./Acre:	16,574 B. F.
Pine Vol/Tree:	300 B. F.
Hdwd. Vol/Tree:	215 B. F.

**CLEAR- CUT SALE
 EXCELLENT QUALITY SAWTIMBER
 HIGH VOLUME VENEER QUALITY WHITE OAK
 8,500 BD. FT / ACRE WHITE OAK IN HARDWOOD AREAS**

Having been employed by **ELOIS S. ARCHER REVOCABLE LIVING TRUST** we solicit bids on all merchantable timber on **58.75 +/- acres** in **Amelia County, Virginia** and as shown on the attached map.

PULPWOOD

We made a 5% plot cruise of the pulpwood-size trees to be harvested. Our estimate of their volume is:

<u>Pulpwood</u>	<u>Cords</u>	<u>Tons</u>
Pine	28	73
Soft Hardwood	149	387
Hard Hardwood	<u>210</u>	<u>546</u>
Total:	387	1,006

SAWTIMBER

We made a 100% count of the sawtimber-size trees to be harvested. Our estimate of their volume is:

<u>Sawtimber</u>			
Loblolly Pine	545,700	Hickory	6,700
White Oak	254,400	Maple	3,200
Red Oak	95,200	Elm	500
Gum	48,500	Ash	200
Northern Red Oak	12,600	Sycamore	100
Poplar	10,900		

Total: 978,000 BF Int 1/4" Scale

VENEER

Included in the volumes are high quality trees that, from our review, will be of high enough quality that a veneer cut can be obtained. The veneer volume is estimated to be:

White Oak 6,823 BF Doyle Scale
Red 963 BF Doyle Scale

The above volumes are not guaranteed; however, care was taken in the field to assemble the above tables. You should note how your utilization practices may vary from the above and make any necessary adjustments.

CONDITIONS

1. The landowner assumes responsibility for compliance with the Virginia State Seed Tree Law.
2. A period of time of **2 years** will be allowed to cut and remove the timber.
3. Roads **must** be maintained and restored to their original condition upon completion of the logging. Any newly constructed roads and decks must be left in a graded condition and must be seeded upon completion of logging. Any newly constructed haul roads, skid roads and log decks and all logging operations must be in accordance with the guidelines set out in the **Best Management Practices Manual** of the Virginia Department of Forestry.
4. Buyer must use caution around hunt club structures and instruct logging trucks to slow down in immediate vicinity.
5. No tops or laps will be allowed to remain in the streams, fields, buffers or over cutting boundaries. They must be pulled back immediately.
6. Only the blue marked trees are to be cut from Streamside Management Zones.
7. No logging will be permitted during excessively wet weather conditions as determined by Timber Marketing & Management, Inc. If logging is halted due to weather conditions, then an extension of time equal to the time lost will be granted.
8. A **\$2,500.00 performance bond** will be paid at closing and held by Timber Marketing & Management, Inc. to insure compliance with all BMP requirements, road maintenance and conditions of the Timber Purchase Contract.

Only sealed bids will be accepted and owners reserve the right to reject any or all bids. BIDS SHOULD BE SUBMITTED PRIOR TO THE TIME OF BID OPENING AND CAN BE SUBMITTED VIA: Mail to: Timber Marketing & Management, Inc. P. O. Box 396, Chesterfield, Virginia 23832 **OR** hand delivered to 9520 Ironbridge Road, Chesterfield, Virginia **OR** telephoned in to 804-796-9622 **OR** faxed to 804-796-9693 **OR** emailed to office@tmmva.com Bids must be made on a lump-sum basis and must be received at this address no later than the posted bid date and time as shown on the cover. Closing shall take place within 30 days of bid acceptance.

There will be no scheduled show trip of the tract; however, you may call and set an appointment or you may inspect the property at your own leisure.

An electronic copy of this sale notice, including maps and volumes, is available for download and viewing on our website at www.tmmva.com under the Timber Sale Notices section.

Sincerely,
Timber Marketing & Management, Inc.



Matt Sandman, Area Manager
434-808-2102 mobile
804-796-9622 office

Archer Tract

Timber Marketing & Management, Inc.

Professional Forestry Consultants

P.O. Box 396

Chesterfield, VA 23832-0000

Phone: (804) 796-9622 • Fax: (804) 796-9693

Pulpwood Cruise: 5.0%
 Sawtimber Cruise: 100.0%
 Veneer Cruise: 100.0%

Cruise Date: Friday, June 24, 2022
 Owner's Name: Archer
 County/State: Amelia County, VA
 Acreage: 59+/-
 Cruise Type: Tree Count
 Harvest Type: Clear Cut
 Total BF/Acre: 16,574
 Pine Vol/Tree: 299.6
 Hardwood Vol/Tree: 214.6

Volume Legend:

- 1) Diameters shown in inches (DBH)
- 2) Logs measured in 16' increments
- 3) Sawtimber volumes are shown in thousands of board feet (MBF)
- 4) Volume scale used for each species of sawtimber is noted
- 5) Pulpwood volumes are shown in standard cords (128 cubic feet)

Comments:

Pulpwood Standard Cord

DBH	Wood Classification							
	Pine		Soft Hardwood		Hard Hardwood		Cedar	
# Trees	Volume	# Trees	Volume	# Trees	Volume	# Trees	Volume	
6	80	4	960	37	900	35		
8	40	4	340	27	640	51		
10	120	20	360	48	420	56		
12			160	32	240	48		
14			20	5	80	21		
Total	240	28	1,840	149	2,280	210		

Ash - Sawtimber International 1/4 Scale

DBH	Number of Logs							
	1-Log	2-Log	3-Log	4-Log	5-Log	# Trees	Volume	% of Total
16	1					1	0.2	100.0%
Total	1					1	0.2	

Elm - Sawtimber International 1/4 Scale

DBH	Number of Logs							
	1-Log	2-Log	3-Log	4-Log	5-Log	# Trees	Volume	% of Total
12	1					1	0.1	11.4%
16	1					1	0.1	22.7%
18	1					1	0.1	29.2%
20	1					1	0.2	36.7%
Total	4					4	0.5	

Gum - Sawtimber International 1/4 Scale

DBH	Number of Logs							
	1-Log	2-Log	3-Log	4-Log	5-Log	# Trees	Volume	% of Total
12	64					64	3.6	7.4%
14	30	51				81	9.7	20.0%
16	8	42	16			66	13.0	26.7%
18	2	19	12			33	9.0	18.6%
20	3	8	10			21	7.3	15.1%
22	1	2	4			7	3.1	6.4%
24		3	1			4	2.1	4.2%
26			1			1	0.8	1.6%
Total	108	125	44			277	48.5	

Hickory - Sawtimber International 1/4 Scale

DBH	Number of Logs							
	1-Log	2-Log	3-Log	4-Log	5-Log	# Trees	Volume	% of Total
12	9					9	0.5	7.6%
14	2	6				8	1.0	15.2%
16	4	5	1			10	1.7	24.8%
18	2	4				6	1.3	19.2%
20		2				2	0.6	9.4%
22		1				1	0.4	5.8%
24			1			1	0.6	9.7%
26		1				1	0.6	8.4%
Total	17	19	2			38	6.7	

Loblolly Pine - Sawtimber International 1/4 Scale

DBH	Number of Logs							
	1-Log	2-Log	3-Log	4-Log	5-Log	# Trees	Volume	% of Total
10	68	34				102	4.5	0.8%
12	56	91	136			283	27.8	5.1%
14	5	52	206	56		319	58.2	10.7%
16	2	16	192	83		293	77.7	14.2%
18	3	15	200	172	1	391	140.9	25.8%
20	1	4	121	116	3	245	114.2	20.9%
22		2	52	70	1	125	73.6	13.5%
24		1	15	23		39	27.9	5.1%
26			10	9		19	16.0	2.9%
28		1	1	1		3	2.7	0.5%
30			2			2	2.1	0.4%
Total	135	216	935	530	5	1,821	545.7	

Maple - Sawtimber International 1/4 Scale

DBH	Number of Logs							
	1-Log	2-Log	3-Log	4-Log	5-Log	# Trees	Volume	% of Total
12	6					6	0.3	10.5%
14	8					8	0.7	20.7%
16	8	1				9	1.1	33.9%
18		2				2	0.5	15.5%
20	1					1	0.2	5.6%
22	2					2	0.4	13.8%
Total	25	3				28	3.2	

Archer Tract

Timber Marketing & Management, Inc.

Cruise Date: Friday, June 24, 2022
 Owner's Name: Archer
 County/State: Amelia County, VA

Northern Red Oak - Sawtimber International 1/4 Scale

DBH	Number of Logs					# Trees	Volume	% of Total
	1-Log	2-Log	3-Log	4-Log	5-Log			
12	3					3	0.2	1.3%
14	3	3				6	0.7	5.3%
16	5	4				9	1.3	10.5%
18	3	3	1			7	1.5	12.0%
20		5	2			7	2.4	19.2%
22		3	2			5	2.2	17.6%
24		1	1			2	1.1	8.8%
28			1			1	0.9	7.2%
30			1			1	1.1	8.3%
32			1			1	1.2	9.6%
Total	14	19	9			42	12.6	

Poplar - Sawtimber International 1/4 Scale

DBH	Number of Logs					# Trees	Volume	% of Total
	1-Log	2-Log	3-Log	4-Log	5-Log			
14	1	1	2			4	0.6	5.5%
16		2	2			4	0.9	8.2%
18		4	5			9	2.7	24.5%
20			1			1	0.4	3.9%
22			4			4	2.1	19.4%
24		1	1			2	1.1	10.2%
26			1			1	0.8	7.0%
30		1				1	0.8	6.9%
36			1			1	1.6	14.4%
Total	1	9	17			27	10.9	

Red Oak - Sawtimber International 1/4 Scale

DBH	Number of Logs					# Trees	Volume	% of Total
	1-Log	2-Log	3-Log	4-Log	5-Log			
12	55					55	3.1	3.2%
14	45	34				79	8.5	9.0%
16	30	34	3			67	10.6	11.1%
18	14	46	1			61	13.8	14.4%
20	9	28	6			43	13.0	13.6%
22	3	28	1			32	12.0	12.6%
24	2	20	1			23	10.6	11.1%
26	1	10	4			15	9.0	9.4%
28		7	3			10	7.3	7.7%
30		4	1			5	4.1	4.3%
32	1		1			2	1.7	1.8%
34	1					1	0.6	0.6%
36		1				1	1.1	1.2%
Total	161	212	21			394	95.2	

Sycamore - Sawtimber International 1/4 Scale

DBH	Number of Logs					# Trees	Volume	% of Total
	1-Log	2-Log	3-Log	4-Log	5-Log			
12	1					1	0.1	100.0%
Total	1					1	0.1	

White Oak - Sawtimber International 1/4 Scale

DBH	Number of Logs					# Trees	Volume	% of Total
	1-Log	2-Log	3-Log	4-Log	5-Log			
12	173					173	9.7	3.8%
14	93	123				216	25.1	9.9%
16	73	177	25			275	48.2	19.0%
18	44	180	21			245	58.0	22.8%
20	13	101	28			142	46.0	18.1%
22	8	62	16			86	34.2	13.4%
24	7	27	8			42	19.7	7.7%
26	1	13	3			17	9.9	3.9%
28	2	3	1			6	3.6	1.4%
Total	414	686	102			1,202	254.4	

Archer Tract

Timber Marketing & Management, Inc.

Cruise Date: Friday, June 24, 2022
 Owner's Name: Archer
 County/State: Amelia County, VA

Sawtimber Volume by Timber Type

Timber Type	# Trees	Volume	Avg BF/Tree	% of Total
Hardwood	2,014	432.2	214.6	44.2%
Pine	1,821	545.7	299.6	55.8%
Total	3,835	977.9	255.0	

Sawtimber Volume by DBH

DBH	# Trees	Volume	Avg BF/Tree	% of Total
10	102	4.5	43.7	0.5%
12	595	45.3	76.1	4.6%
14	721	104.4	144.8	10.7%
16	735	154.8	210.5	15.8%
18	755	227.8	301.8	23.3%
20	463	184.4	398.3	18.9%
22	262	128.1	489.0	13.1%
24	113	63.1	558.1	6.4%
26	54	37.0	684.7	3.8%
28	20	14.4	722.4	1.5%
30	9	8.0	887.8	0.8%
32	3	2.9	970.3	0.3%
34	1	0.6	550.0	0.1%
36	2	2.7	1,346.0	0.3%
Total	3,835	977.9	255.0	

Sawtimber Volume by Species

Species	# Trees	Volume	Avg BF/Tree	% of Total
Ash	1	0.2	190.0	0.0%
Elm	4	0.5	123.3	0.1%
Gum	277	48.5	175.2	5.0%
Hickory	38	6.7	175.4	0.7%
Loblolly Pine	1,821	545.7	299.6	55.8%
Maple	28	3.2	114.5	0.3%
Northern Red Oak	42	12.6	299.8	1.3%
Poplar	27	10.9	404.0	1.1%
Red Oak	394	95.2	241.7	9.7%
Sycamore	1	0.1	56.0	0.0%
White Oak	1,202	254.4	211.6	26.0%
Total	3,835	977.9	255.0	

Red Oak - Veneer

Doyle (Butt Log Scale)

DBH	Butt Log Length								# Logs	Volume	% of Total
	8'	10'	12'	14'	16'	18'	20'	22'			
18			1						1	69	7.2%
20		2							2	192	19.9%
22					1				1	185	19.2%
28			1						1	246	25.5%
30		1							1	271	28.1%
Total	3	2	1		1				6	963	

White Oak - Veneer

Doyle (Butt Log Scale)

DBH	Butt Log Length								# Logs	Volume	% of Total
	8'	10'	12'	14'	16'	18'	20'	22'			
18	5	5	6		1				17	1,072	15.7%
20	5	3	4	1					13	1,271	18.6%
22	5	6	2		2				15	1,908	28.0%
24	1	2	2		2				7	1,267	18.6%
26		3	2						5	1,059	15.5%
28			1						1	246	3.6%
Total	16	19	17	1	5				58	6,823	

Veneer Tag List

Tag	Species	DBH	Butt Log Length
G1	Red Oak	28	12'
G2	Red Oak	30	10'
G3	White Oak	20	8'
G4	White Oak	20	8'
G5	Red Oak	20	10'
G6	White Oak	20	10'
G7	White Oak	24	10'
G8	White Oak	20	12'
GG1	White Oak	18	8'
GG10	White Oak	24	10'
GG11	White Oak	24	8'
GG12	White Oak	20	12'
GG2	White Oak	22	8'
GG3	White Oak	24	16'
GG4	White Oak	20	12'
GG5	White Oak	18	8'
GG6	White Oak	18	8'
GG7	White Oak	26	10'
GG8	White Oak	22	8'
GG9	White Oak	28	12'
J1	White Oak	22	8'
J10	White Oak	22	10'
J11	White Oak	22	10'
J12	White Oak	22	10'
J13	White Oak	22	8'
J14	White Oak	18	10'
J15	White Oak	18	10'

Archer Tract

Timber Marketing & Management, Inc.

Cruise Date: Friday, June 24, 2022
 Owner's Name: Archer
 County/State: Amelia County, VA

J16	Red Oak	22	16'
J17	White Oak	22	10'
J18	White Oak	22	10'
J19	White Oak	24	16'
J2	White Oak	18	10'
J20	White Oak	24	12'
J21	Red Oak	18	12'
J22	White Oak	18	12'
J23	White Oak	22	10'
J24	White Oak	22	16'
J25	White Oak	20	8'
J26	White Oak	18	10'
J27	White Oak	18	10'
J28	White Oak	18	12'
J29	White Oak	22	16'
J3	Red Oak	20	10'
J30	White Oak	20	10'
J31	White Oak	18	12'
J32	White Oak	26	12'
J33	White Oak	18	16'
J34	White Oak	22	8'
J4	White Oak	18	12'
J5	White Oak	18	8'
J6	White Oak	22	12'
J7	White Oak	26	10'
J8	White Oak	24	12'
J9	White Oak	20	8'
M1	White Oak	18	12'
M2	White Oak	18	12'
M3	White Oak	20	12'
M4	White Oak	20	14'
M5	White Oak	18	8'
M6	White Oak	26	12'
MW1	White Oak	20	8'
MW2	White Oak	20	10'
MW3	White Oak	26	10'
MW4	White Oak	22	12'

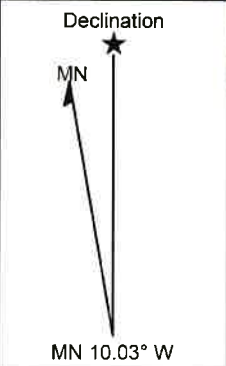
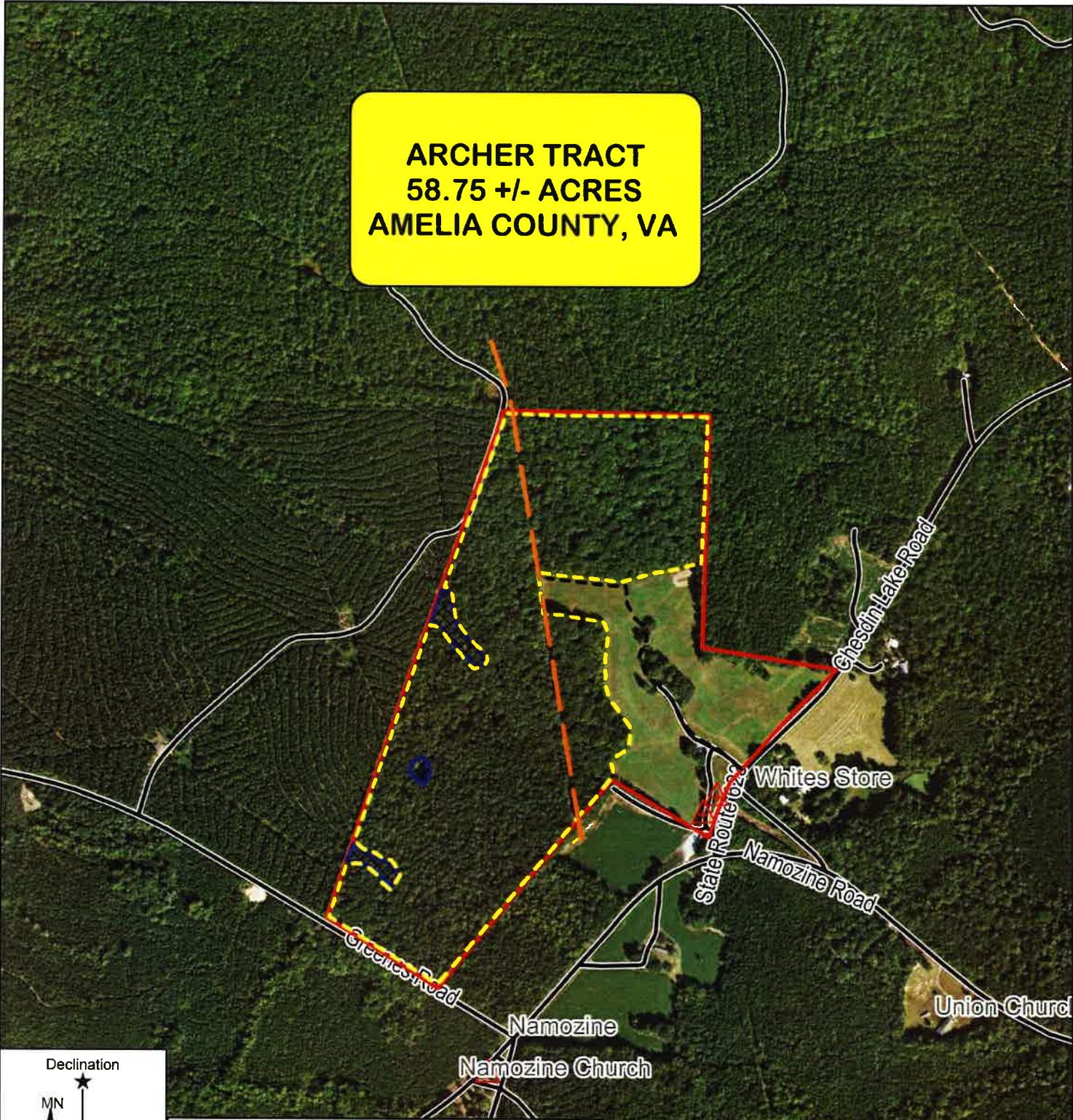
Veneer Volume by Species

Species	# Trees	Volume	Avg BF/Log	% of Total
Red Oak	6	963	160.5	12.4%
White Oak	58	6,823	117.6	87.6%
Total	64	7,786	121.7	

Veneer Volume by DBH

DBH	# Trees	Volume	Avg BF/Log	% of Total
18	18	1,141	63.4	14.7%
20	15	1,463	97.5	18.8%
22	16	2,093	130.8	26.9%
24	7	1,267	181.0	16.3%
26	5	1,059	211.8	13.6%
28	2	492	246.0	6.3%
30	1	271	271.0	3.5%
Total	64	7,786	121.7	

**ARCHER TRACT
58.75 +/- ACRES
AMELIA COUNTY, VA**



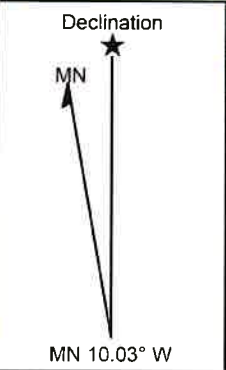
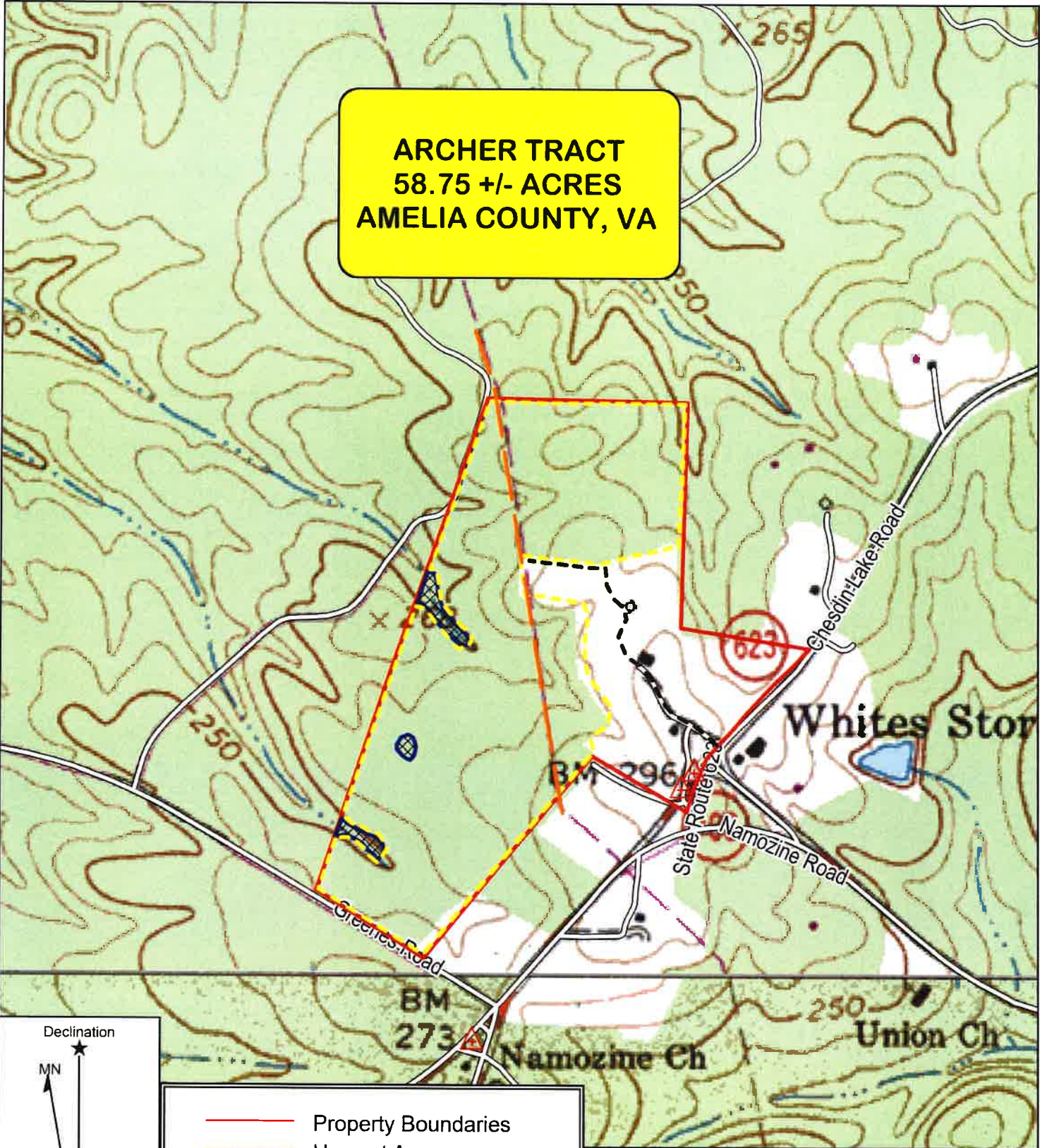
- Property Boundaries
- Harvest Area
- Stream Buffers
- Underground Utility Line
- Access

TIMBER MARKETING & MANAGEMENT INC.
Professional Forestry Consultants
 P.O. Box 396
 Chesterfield, VA 23832
 Ph (804) 796-9622
 Fax (804) 796-9693
 www.tmmva.com

Name: Archer Tract
 Date: June 28, 2022
 Scale: 1 inch = 660 ft.

Location: Amelia County, VA
 57.48 +/- Acres Clearcut
 1.27 +/- Acres SMZ

**ARCHER TRACT
58.75 +/- ACRES
AMELIA COUNTY, VA**



- Property Boundaries
- - - Harvest Area
- Stream Buffers
- - - Underground Utility Line
- - - Access



TIMBER MARKETING & MANAGEMENT INC.
Professional Forestry Consultants
 P.O. Box 396
 Chesterfield, VA 23832
 Ph (804) 796-9622
 Fax (804) 796-9693
 www.tmmva.com

<p>Name: Archer Tract Date: June 28, 2022 Scale: 1 inch = 660 ft.</p>	<p>Location: Amelia County, VA 57.48 +/- Acres Clearcut 1.27 +/- Acres SMZ</p>
---	--

