

TIMBER MARKETING & MANAGEMENT INC.
 Professional Forestry Consultants
 P.O. Box 396
 Chesterfield, VA 23832
 Ph (804) 796-9622
 Fax (804) 796-9693
 www.tmmva.com

Sale Date:	July 11, 2019
Time:	11:00 a.m.
Day:	Thursday
Total Vol./Acre:	6,214 B. F.
Pine Vol/Tree:	144 B. F.
Hdwd. Vol/Tree:	555 B. F.

**SELECT-CUT SALE
 EXCELLENT QUALITY HARDWOOD & ACCESS**

Having been employed by **Mr. Dwight Baker** we solicit bids on blue marked timber only on **168 +/- acres** in **Cumberland County, Virginia** and as shown on the attached map.

SAWTIMBER

We have made a 100% count of the sawtimber-size trees. Our estimate of their volume is:

Sawtimber

Poplar	411,900	Loblolly/Shortleaf Pine	12,700
Red Oak	291,100	Virginia Pine	11,600
White Oak	103,700	Maple	6,900
Northern Red Oak	97,600	Black Walnut	6,400
Chestnut Oak	53,900	Hickory	6,200
Gum	23,100	Ash	5,900
Sycamore	11,500	Black Cherry	1,300

Total: 1,043,800 BF Int 1/4" Scale

The above volumes are not guaranteed; however, care was taken in the field to assemble the above tables. You should note how your utilization practices may vary from the above and make any necessary adjustments.

VENEER

Included in the volumes are high quality trees that, from our review, will be of high enough quality that a veneer cut can be obtained. The veneer volume is estimated to be:

Red Oak	3,556	BF Doyle Scale
White Oak	1,770	BD Doyle Scale
Northern Red Oak	359	BF Doyle Scale

CONDITIONS

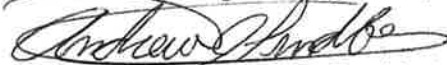
1. A period of time of **24 months** will be allowed to cut and remove the timber.
2. Roads **must** be maintained and restored to their original condition upon completion of the logging. Any newly constructed roads and decks must be left in a graded condition and must be seeded upon completion of logging. Any newly constructed haul roads, skid roads and log decks and all logging operations must be in accordance with the guidelines set out in the **Best Management Practices Manual** of the Virginia Department of Forestry.
3. No tops or laps will be allowed to remain in the streams, fields, buffers or over cutting boundaries. They must be pulled back immediately.
4. Only the blue marked trees are to be cut from the sale area.
5. No logging will be permitted during excessively wet weather conditions as determined by Timber Marketing & Management, Inc. If logging is halted due to weather conditions, then an extension of time equal to the time lost will be granted.
6. A \$3,000.00 performance bond will be paid at closing and held by Timber Marketing & Management, Inc. to insure compliance with all BMP requirements, road maintenance and conditions of the Timber Purchase Contract.
7. Landowner will accept the following payment terms: 50% payable at closing and 50% payable 60 days after closing.

Only sealed bids will be accepted and owners reserve the right to reject any or all bids. BIDS SHOULD BE SUBMITTED PRIOR TO THE TIME OF BID OPENING AND CAN BE SUBMITTED VIA: Mail to: Timber Marketing & Management, Inc. P. O. Box 396, Chesterfield, Virginia 23832 **OR** hand delivered to 9520 Ironbridge Road, Chesterfield, Virginia **OR** telephoned in to 804-796-9622 **OR** faxed to 804-796-9693 **OR** emailed to tmm4u@aol.com Bids must be made on a lump-sum basis and must be received at this address no later than the posted bid date and time as shown on the cover. Closing shall take place within 30 days of bid acceptance.

There will be no scheduled show trip of the tract; however, you may call and set an appointment or you may inspect the property at your own leisure.

An electronic copy of this sale notice, including maps and volumes, is available for download and viewing on our website at www.tmmva.com under the Timber Sale Notices section.

Sincerely,
Timber Marketing & Management, Inc.



Andrew J. Lindberg, Vice President
804-338-8436 mobile
804-796-9622 office

Baker Tract

Timber Marketing & Management, Inc.

Professional Forestry Consultants

P.O. Box 396

Chesterfield, VA 23832-0000

Phone: (804) 796-9622 • Fax: (804) 796-9693

Sawtimber Cruise: 100.0%

Veneer Cruise: 100.0%

Cruise Date: Monday, May 13, 2019
 Owner's Name: Baker
 County/State: Cumberland County, VA
 Acreage: 168+/-
 Cruise Type: Tree Count
 Harvest Type: Select Cut
 Total BF/Acre: 6,214
 Pine Vol/Tree: 144.1
 Hardwood Vol/Tree: 554.7

Volume Legend:

- 1) Diameters shown in inches (DBH)
- 2) Logs measured in 16' increments
- 3) Sawtimber volumes are shown in thousands of board feet (MBF)
- 4) Volume scale used for each species of sawtimber is noted
- 5) Pulpwood volumes are shown in standard cords (128 cubic feet)

Comments:

Ash - Sawtimber

International 1/4 Scale

DBH	Number of Logs					# Trees	Volume	% of Total
	1-Log	2-Log	3-Log	4-Log	5-Log			
16	2					2	0.2	3.8%
18		5				5	1.2	21.1%
20		4				4	1.3	21.4%
22	2	3	1			6	2.1	36.3%
24		1				1	0.5	8.0%
26		1				1	0.6	9.5%
Total	4	14	1			19	5.9	

Black Cherry - Sawtimber

International 1/4 Scale

DBH	Number of Logs					# Trees	Volume	% of Total
	1-Log	2-Log	3-Log	4-Log	5-Log			
18	2	2				4	0.8	62.6%
24		1				1	0.5	37.4%
Total	2	3				5	1.3	

Black Walnut - Sawtimber

International 1/4 Scale

DBH	Number of Logs					# Trees	Volume	% of Total
	1-Log	2-Log	3-Log	4-Log	5-Log			
16		1				1	0.2	3.0%
18		2	1			3	0.8	12.9%
20	1	2	1			4	1.2	19.2%
22		3				3	1.2	18.1%
24				1		1	0.8	12.0%
30		1				1	0.8	11.8%
32				1		1	1.5	23.0%
Total	1	9	2	2		14	6.4	

Chestnut Oak - Sawtimber

International 1/4 Scale

DBH	Number of Logs					# Trees	Volume	% of Total
	1-Log	2-Log	3-Log	4-Log	5-Log			
14		1				1	0.1	0.3%
16		5				5	1.0	1.8%
18	3	12	8			23	6.1	11.3%
20	3	18	6			27	8.8	16.2%
22		10	7			17	7.6	14.0%
24	1	9	3			13	6.4	11.9%
26		6	9			15	10.3	19.0%
28		3	4			7	5.6	10.3%
30			4			4	4.2	7.8%
32				2		2	3.0	5.5%
34		1				1	1.0	1.8%
Total	7	65	41	2		115	53.9	

Gum - Sawtimber

International 1/4 Scale

DBH	Number of Logs					# Trees	Volume	% of Total
	1-Log	2-Log	3-Log	4-Log	5-Log			
18		1	4			5	1.6	6.9%
20		1	8	1		10	4.2	18.3%
22		3	8	1		12	6.0	26.0%
24		3	7	1		11	6.7	28.9%
26			5			5	3.8	16.6%
30		1				1	0.8	3.3%
Total		9	32	3		44	23.1	

Hickory - Sawtimber

International 1/4 Scale

DBH	Number of Logs					# Trees	Volume	% of Total
	1-Log	2-Log	3-Log	4-Log	5-Log			
18		1	1			2	0.6	9.4%
20		5	1			6	2.0	32.1%
22		1	3			4	2.0	31.7%
24		1	1			2	1.1	17.9%
26		1				1	0.6	9.0%
Total		9	6			15	6.2	

Baker Tract

Timber Marketing & Management, Inc.

Cruise Date: Monday, May 13, 2019
 Owner's Name: Baker
 County/State: Cumberland County, VA

Loblolly/Shortleaf Pine - Sawtimber International 1/4 Scale

Number of Logs								
DBH	1-Log	2-Log	3-Log	4-Log	5-Log	# Trees	Volume	% of Total
10	3					3	0.1	0.8%
12	2	6	3			11	1.0	8.0%
14		7	9			16	2.7	20.9%
16		7	10			17	3.9	30.5%
18		2	8	1		11	3.6	28.2%
20			1	1		2	0.9	7.4%
22			1			1	0.5	4.1%
Total	5	22	32	2		61	12.7	

Maple - Sawtimber International 1/4 Scale

Number of Logs								
DBH	1-Log	2-Log	3-Log	4-Log	5-Log	# Trees	Volume	% of Total
18		1				1	0.2	3.6%
20		1				1	0.3	4.5%
22		5				5	1.9	28.0%
24	3	2				5	1.7	25.1%
26		2				2	1.1	16.1%
28	1	1				2	1.0	14.8%
34	1					1	0.6	7.9%
Total	5	12				17	6.9	

Northern Red Oak - Sawtimber International 1/4 Scale

Number of Logs								
DBH	1-Log	2-Log	3-Log	4-Log	5-Log	# Trees	Volume	% of Total
18	2	5	1			8	1.9	1.9%
20	3	16	10			29	9.8	10.1%
22		18	20			38	17.5	18.0%
24		15	16	2		33	18.9	19.4%
26		9	8	1		18	12.1	12.4%
28		1	6			7	6.1	6.2%
30	1	2	6	1		10	9.5	9.8%
32		1	3			4	4.5	4.6%
34		2	9			11	14.4	14.8%
36			1			1	1.6	1.6%
38		1				1	1.3	1.3%
Total	6	70	80	4		160	97.6	

Poplar - Sawtimber International 1/4 Scale

Number of Logs								
DBH	1-Log	2-Log	3-Log	4-Log	5-Log	# Trees	Volume	% of Total
16		1	2			3	0.7	0.2%
18		7	35	4		46	15.1	3.7%
20	2	12	75	20		109	46.4	11.3%
22		20	113	35		168	89.7	21.8%
24		14	81	22	2	119	77.5	18.8%
26		9	59	12	1	81	62.5	15.2%
28	1	4	21	12	1	39	36.4	8.8%
30		1	18	9	1	29	32.6	7.9%
32			6	3		9	11.7	2.8%
34		1	10	1		12	16.5	4.0%
36		1	10	1		12	18.8	4.6%
38			1	1		2	3.9	1.0%
Total	3	70	431	120	5	629	411.9	

Red Oak - Sawtimber International 1/4 Scale

Number of Logs								
DBH	1-Log	2-Log	3-Log	4-Log	5-Log	# Trees	Volume	% of Total
16	1	1	1			3	0.6	0.2%
18	5	45	20			70	18.6	6.4%
20	5	67	34			106	36.5	12.5%
22	3	85	28			116	48.3	16.6%
24	4	60	51	1		116	62.8	21.6%
26	1	36	26			63	40.3	13.9%
28		18	14			32	24.4	8.4%
30		21	7			28	23.3	8.0%
32		3	8			11	12.3	4.2%
34		6	7			13	15.6	5.4%
38		1	1			2	3.0	1.0%
40		1	2			3	5.4	1.8%
Total	19	344	199	1		563	291.1	

Sycamore - Sawtimber International 1/4 Scale

Number of Logs								
DBH	1-Log	2-Log	3-Log	4-Log	5-Log	# Trees	Volume	% of Total
30		1	2			3	2.9	24.9%
32		1	1			2	2.1	18.2%
36			2			2	3.1	27.4%
40		1	1			2	3.4	29.5%
Total		3	6			9	11.5	

Baker Tract

Timber Marketing & Management, Inc.

Cruise Date: Monday, May 13, 2019
 Owner's Name: Baker
 County/State: Cumberland County, VA

Virginia Pine - Sawtimber International 1/4 Scale

DBH	Number of Logs					# Trees	Volume	% of Total
	1-Log	2-Log	3-Log	4-Log	5-Log			
10	24					24	0.9	7.4%
12	21	11	5			37	2.8	24.0%
14	7	14	11			32	4.6	39.6%
16	1	6	5			12	2.5	21.8%
18		2	1			3	0.8	7.2%
Total	53	33	22			108	11.6	

White Oak - Sawtimber International 1/4 Scale

DBH	Number of Logs					# Trees	Volume	% of Total
	1-Log	2-Log	3-Log	4-Log	5-Log			
14		1				1	0.1	0.1%
16		2				2	0.4	0.4%
18	6	26	12			44	11.3	10.9%
20	3	40	21			64	22.1	21.3%
22	3	44	18	2		67	28.5	27.4%
24	3	24	11			38	19.1	18.4%
26	1	11	5			17	10.3	9.9%
28		7	4			11	8.2	7.9%
30		2				2	1.5	1.5%
32			1			1	1.2	1.2%
34		1				1	1.0	1.0%
Total	16	158	72	2		248	103.7	

Sawtimber Volume by Timber Type

Timber Type	# Trees	Volume	Avg BF/Tree	% of Total
Hardwood	1,838	1,019.6	554.7	97.7%
Pine	169	24.4	144.1	2.3%
Total	2,007	1,043.9	520.1	

Sawtimber Volume by DBH

DBH	# Trees	Volume	Avg BF/Tree	% of Total
10	27	1.0	36.0	0.1%
12	48	3.8	79.4	0.4%
14	50	7.5	150.9	0.7%
16	45	9.4	209.5	0.9%
18	225	62.7	278.7	6.0%
20	362	133.5	368.8	12.8%
22	437	205.4	470.0	19.7%
24	340	196.0	576.6	18.8%
26	203	141.6	697.4	13.6%
28	98	81.7	833.7	7.8%
30	78	75.5	967.7	7.2%
32	30	36.3	1,209.2	3.5%
34	39	49.1	1,258.4	4.7%
36	15	23.5	1,564.4	2.2%
38	5	8.2	1,644.6	0.8%
40	5	8.7	1,747.4	0.8%
Total	2,007	1,043.9	520.1	

Sawtimber Volume by Species

Species	# Trees	Volume	Avg BF/Tree	% of Total
Ash	19	5.9	309.4	0.6%
Black Cherry	5	1.3	250.6	0.1%
Black Walnut	14	6.4	459.3	0.6%
Chestnut Oak	115	53.9	468.8	5.2%
Gum	44	23.1	525.9	2.2%
Hickory	15	6.2	414.9	0.6%
Loblolly/Shortleaf Pine	61	12.7	208.8	1.2%
Maple	17	6.9	407.1	0.7%
Northern Red Oak	160	97.6	609.7	9.3%
Poplar	629	411.9	654.9	39.5%
Red Oak	563	291.1	517.1	27.9%
Sycamore	9	11.5	1,273.7	1.1%
Virginia Pine	108	11.6	107.6	1.1%
White Oak	248	103.7	418.3	9.9%
Total	2,007	1,043.9	520.1	

Baker Tract

Timber Marketing & Management, Inc.

Cruise Date: Monday, May 13, 2019
 Owner's Name: Baker
 County/State: Cumberland County, VA

Northern Red Oak - Veneer Doyle (Butt Log Scale)

DBH	Butt Log Length										# Logs	Volume	% of Total
	8'	10'	12'	14'	16'	18'	20'	22'	24'				
22			1								1	128	35.7%
24					1						1	231	64.3%
Total			1	1							2	359	

Red Oak - Veneer Doyle (Butt Log Scale)

DBH	Butt Log Length										# Logs	Volume	% of Total
	8'	10'	12'	14'	16'	18'	20'	22'	24'				
20			2		1						3	358	10.1%
22			1		2						3	498	14.0%
24			1		5						6	1,326	37.3%
26			1								1	222	6.2%
28	1				2						3	881	24.8%
30		1									1	271	7.6%
Total	1	1	5	10							17	3,556	

White Oak - Veneer Doyle (Butt Log Scale)

DBH	Butt Log Length										# Logs	Volume	% of Total
	8'	10'	12'	14'	16'	18'	20'	22'	24'				
24			1		1						2	402	22.7%
26			2								2	444	25.1%
28			1		2						3	924	52.2%
Total			4	3							7	1,770	

Veneer Tag List

Tag	Species	DBH	Butt Log Length
A1	Red Oak	26	12'
A10	Red Oak	28	8'
A11	Red Oak	20	12'
A12	Red Oak	20	12'
A13	Red Oak	20	16'
A14	Northern Red Oak	24	16'
A15	Northern Red Oak	22	12'
A2	Red Oak	22	16'
A3	Red Oak	22	12'
A4	Red Oak	24	12'
A5	Red Oak	24	16'
A6	Red Oak	22	16'
A7	White Oak	26	12'
A8	Red Oak	24	16'
A9	Red Oak	24	16'
G1	White Oak	28	16'
M1	Red Oak	24	16'
M2	Red Oak	28	16'
M3	White Oak	24	16'
S1	Red Oak	30	10'
S2	Red Oak	24	16'

S3	White Oak	24	12'
S4	Red Oak	28	16'
S5	White Oak	28	16'
S6	White Oak	26	12'
S7	White Oak	28	12'

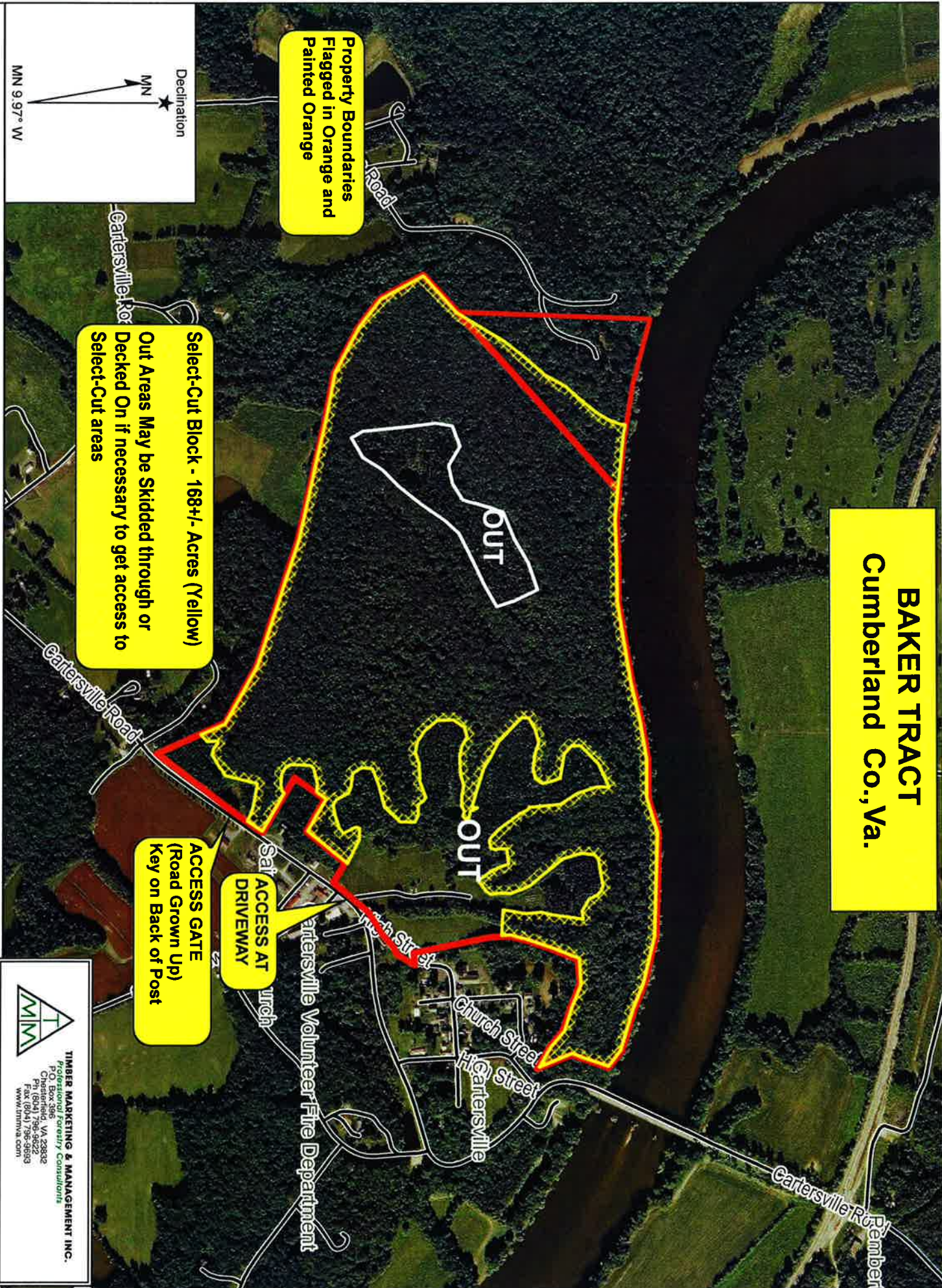
Veneer Volume by DBH

DBH	# Trees	Volume	Avg BF/Log	% of Total
20	3	358	119.3	6.3%
22	4	626	156.5	11.0%
24	9	1,959	217.7	34.5%
26	3	666	222.0	11.7%
28	6	1,805	300.8	31.8%
30	1	271	271.0	4.8%
Total	26	5,685	218.7	

Veneer Volume by Species

Species	# Trees	Volume	Avg BF/Log	% of Total
Northern Red Oak	2	359	179.5	6.3%
Red Oak	17	3,556	209.2	62.6%
White Oak	7	1,770	252.9	31.1%
Total	26	5,685	218.7	

BAKER TRACT
Cumberland Co., Va.

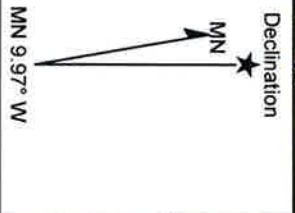


**Property Boundaries
Flagged in Orange and
Painted Orange**

Select-Cut Block - 168+/- Acres (Yellow)
**Out Areas May be Skidded through or
Decked On if necessary to get access to
Select-Cut areas**

**ACCESS GATE
(Road Grown Up)
Key on Back of Post**

**Self
ACCESS AT
DRIVEWAY**



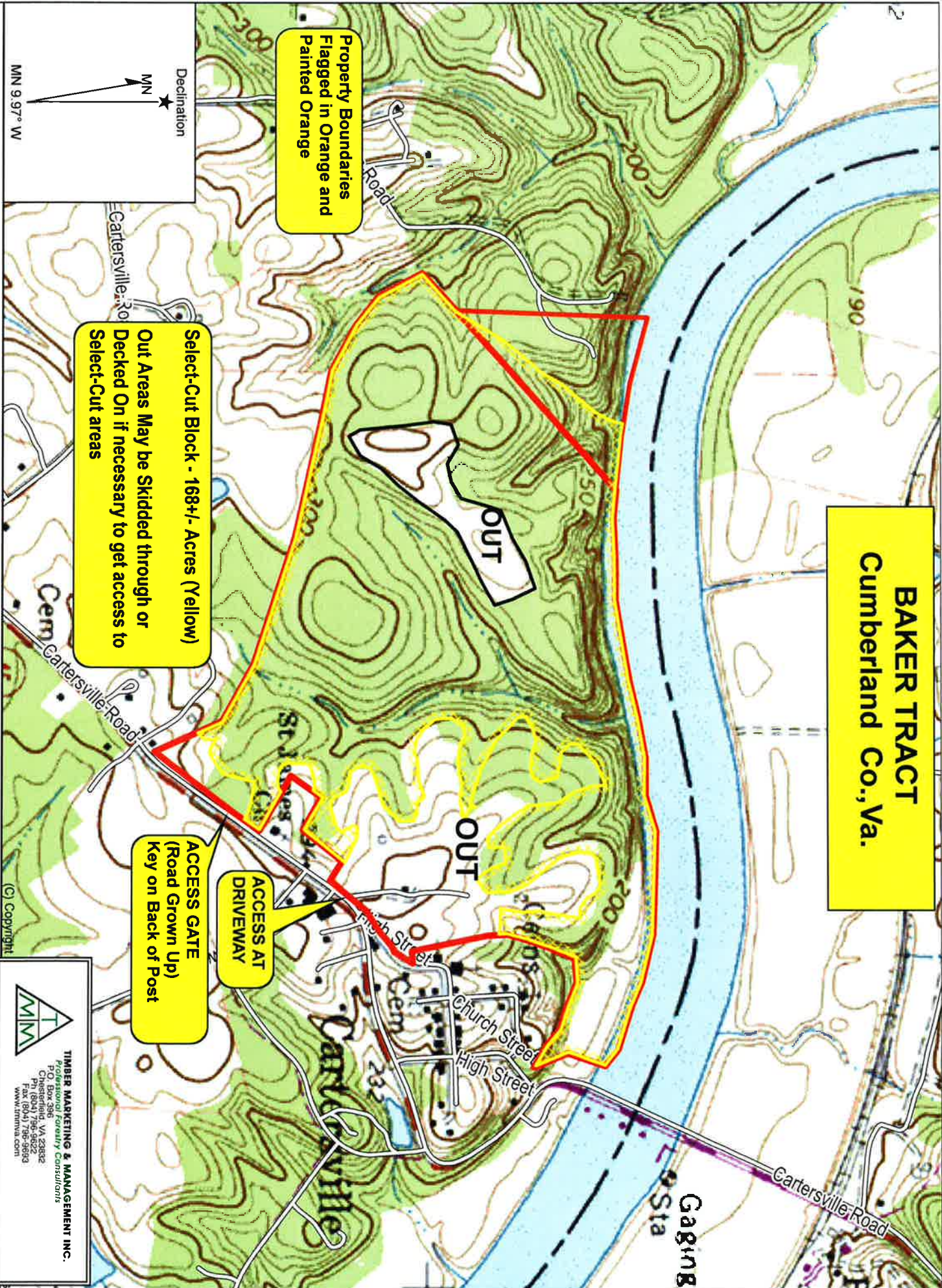
Name: BAKER TRACT
Date: 06/17/19
Scale: 1 inch = 833 ft.

Location: 037° 40' 02.7352" N, 078° 05' 53.4220" W

TIMBER MARKETING & MANAGEMENT INC.
Professional Forestry Consultants
Chesapeake, VA 23832
Ph: (804) 796-9622
Fax: (804) 796-9893
www.tmmva.com

(C) Copyright 2017, Mapbox

BAKER TRACT Cumberland Co., Va.



Property Boundaries
Flagged in Orange and
Painted Orange

Select-Cut Block - 168+/- Acres (Yellow)
Out Areas May be Skidded through or
Decked On if necessary to get access to
Select-Cut areas

ACCESS AT
DRIVEWAY

ACCESS GATE
(Road Grown Up)
Key on Back of Post

TIMBER MARKETING & MANAGEMENT INC.
Professional Forestry Consultants
Chilhowee, VA 23832
Ph: (804) 796-9222
Fax: (804) 796-9693
www.tmmva.com

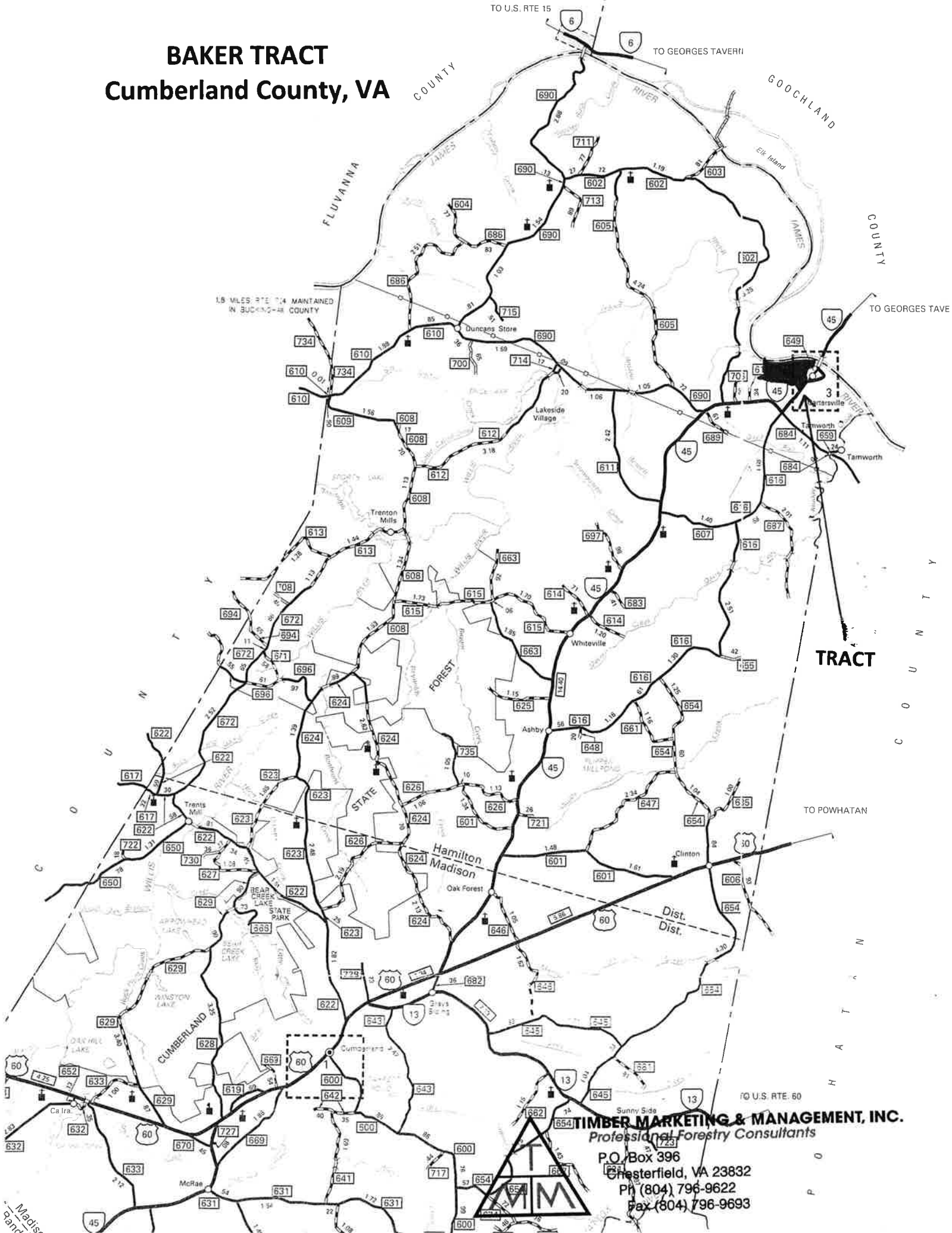
Name: BAKER TRACT
Date: 06/17/19
Scale: 1 inch = 833 ft.

Location: 037° 40' 02.8430" N, 078° 05' 53.3089" W

(c) Copyright 2016, Trimble Navigation Limited

BAKER TRACT

Cumberland County, VA



TRACT



TIMBER MARKETING & MANAGEMENT, INC.
 Professional Forestry Consultants
 P.O. Box 396
 Chesterfield, VA 23832
 Ph (804) 796-9622
 Fax (804) 796-9693

Madison