

TIMBER MARKETING & MANAGEMENT INC.

Professional Forestry Consultants
 P.O. Box 396
 Chesterfield, VA 23832
 Ph (804) 796-9622
 Fax (804) 796-9693
 www.tmmva.com

Sale Date:	Aug 20, 2020	Aug 20, 2020
Time:	11:00 am	11:00 am
Day:	Thursday	Thursday
BLOCK:	Block 3	Block 4
Total Vol./Acre:	14,684	17,660
Loblolly Pine Vol/Tree:	147	163
Hdwd. Vol/Tree:	168	146

CLEAR CUT HARVEST

Having been employed by **Blenheim Ltd.**, we solicit bids on all merchantable timber on **55 +/- acres** shown as **Block 3** (44 +/- acres clear cut and 11 +/- acres selective harvest in the SMZ's) and on all merchantable timber on **40 +/- acres** shown as **Block 4** (31 +/- acres clear cut and 9 +/- acres selective harvest in the SMZ's) and in Northumberland County, Virginia.

We made a 4% cruise of the pulpwood trees to be harvested. Our estimate of their volume is:

<i>Pulpwood</i>	<i>Block 3</i>	<i>Block 4</i>	<i>Total</i>
Pine	410	233	643
Soft Hardwood	101	57	158
Hard Hardwood	<u>13</u>	<u>17</u>	<u>30</u>
Total:	524	307	831 Standard Cords

We made a 100% tree count of the sawtimber trees to be harvested. Our estimate of their volume is:

<i>Sawtimber</i>	<i>Block 3</i>	<i>Block 4</i>	<i>Combined Total</i>
Loblolly	702,600	673,400	1,376,000
Poplar	64,400	12,500	76,900
Red Oak	22,200	7,300	29,500
Gum	9,800	1,400	11,200
White Oak	3,300	5,300	8,600
Chestnut Oak	0	3,600	3,600
Maple	3,400	1,600	5,000
Virginia Pine	1,000	700	1,700
Black Cherry	800	200	1,000
Beech	0	100	100
Hickory	0	100	100
Pawlonia	0	100	100
Aspen	<u>100</u>	<u>100</u>	<u>200</u>
Total:	807,600	706,400	1,514,000 Total B.F. Int 1/4" Scale

The above volumes are not guaranteed; however, care was taken in the field to assemble the above tables. You should note how your utilization practices may vary from the above and make any necessary adjustments.

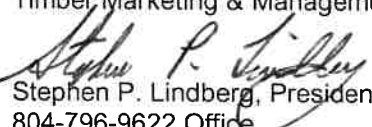
CONDITIONS

1. The landowner assumes responsibility for compliance with the Virginia State Seed Tree Law.
2. A period of time of 24 months will be allowed to cut and remove the timber.
3. Roads **must** be maintained and restored to their original condition upon completion of the logging. Any newly constructed roads and decks must be left in a graded condition and must be seeded upon completion of logging. Any newly constructed haul roads, skid roads and log decks and all logging operations must be in accordance with the guidelines set out in the **Best Management Practices Manual** of the Virginia Department of Forestry.
4. No tops or laps will be allowed to remain in the streams, fields, buffers or over cutting boundaries. They must be pulled back into the harvest area immediately.

5. Only the blue marked trees are to be cut from Streamside Management Zones.
6. No logging will be permitted during excessively wet weather conditions as determined by Timber Marketing & Management, Inc. If logging is halted due to weather conditions, then an extension of time equal to the time lost will be granted.
7. A \$4,000.00 performance bond will be paid at closing and held by Timber Marketing & Management, Inc. to insure compliance with all BMP requirements, road maintenance and conditions of the Timber Purchase Contract.
8. Landowner will accept a deferred payment as follows: 50% of the gross sales amount payable within 30 days of bid acceptance and remaining 50% due on January 12, 2021 or when logging begins which ever comes first.

Only sealed bids will be accepted and owners reserve the right to reject any or all bids. BIDS SHOULD BE SUBMITTED PRIOR TO THE TIME OF BID OPENING AND CAN BE SUBMITTED VIA: Mail to: Timber Marketing & Management, Inc. P. O. Box 396, Chesterfield, Virginia 23832 **OR** hand delivered to 9520 Ironbridge Road, Chesterfield, Virginia **OR** telephoned in to 804-796-9622 **OR** faxed to 804-796-9693 **OR** emailed to tmm4u@aol.com Bids must be made on a lump-sum basis and must be received at this address no later than posted bid date and time as shown on the cover.

There will be no scheduled show trip of the tract; however, you may call and set an appointment or you may inspect the property at your own leisure.

Sincerely,
Timber Marketing & Management, Inc.

Stephen P. Lindberg, President
804-796-9622 Office
434-808-2102 Mobile

Blenheim Tract Block 3

Timber Marketing & Management, Inc.

Professional Forestry Consultants

P.O. Box 396

Chesterfield, VA 23832-0000

Phone: (804) 796-9622 • Fax: (804) 796-9693

Pulpwood Cruise: 4.0%

Sawtimber Cruise: 100.0%

Cruise Date: Wednesday, July 01, 2020
 Owner's Name: Blenheim
 County/State: Northumberland County, VA
 Acreage: 55+/-
 Cruise Type: Tree Count
 Harvest Type: Clear Cut
 Total BF/Acre: 14,684
 Pine Vol/Tree: 147.0
 Hardwood Vol/Tree: 168.0

Volume Legend:

- 1) Diameters shown in inches (DBH)
- 2) Logs measured in 16' increments
- 3) Sawtimber volumes are shown in thousands of board feet (MBF)
- 4) Volume scale used for each species of sawtimber is noted
- 5) Pulpwood volumes are shown in standard cords (128 cubic feet)

Comments:

Pulpwood

Standard Cord

DBH	Wood Classification							
	Pine		Soft Hardwood		Hard Hardwood		Cedar	
	# Trees	Volume	# Trees	Volume	# Trees	Volume	# Trees	Volume
6	675	30	450	18	100	4		
8	1,425	143	675	53	75	6		
10	1,350	224	225	30	25	3		
12	50	13						
Total	3,500	410	1,350	101	200	13		

Aspen - Sawtimber

International 1/4 Scale

DBH	Number of Logs							
	1-Log	2-Log	3-Log	4-Log	5-Log	# Trees	Volume	% of Total
14	1					1	0.1	100.0%
Total	1					1	0.1	

Black Cherry - Sawtimber

International 1/4 Scale

DBH	Number of Logs							
	1-Log	2-Log	3-Log	4-Log	5-Log	# Trees	Volume	% of Total
14	1					1	0.1	10.3%
16	1					1	0.1	13.9%
22	1	1				2	0.6	75.7%
Total	3	1				4	0.8	

Gum - Sawtimber

International 1/4 Scale

DBH	Number of Logs							
	1-Log	2-Log	3-Log	4-Log	5-Log	# Trees	Volume	% of Total
12	35					35	2.0	19.9%
14	14	17	1			32	3.7	38.0%
16	8	9	1			18	2.9	29.1%
18	2		1			3	0.6	6.3%
22		1				1	0.4	3.9%
24	1					1	0.3	2.7%
Total	60	27	3			90	9.8	

Loblolly Pine - Sawtimber

International 1/4 Scale

DBH	Number of Logs							
	1-Log	2-Log	3-Log	4-Log	5-Log	# Trees	Volume	% of Total
10	799	205	1			1,005	40.9	5.8%
12	215	516	919			1,650	169.8	24.2%
14	28	259	706	168		1,161	206.4	29.4%
16	6	104	363	167	1	641	164.6	23.4%
18	2	37	114	78	7	238	82.1	11.7%
20		11	30	21	3	65	28.8	4.1%
22		2	6	5		13	7.1	1.0%
24				1		1	0.8	0.1%
26		1	2			3	2.1	0.3%
Total	1,050	1,135	2,141	440	11	4,777	702.6	

Maple - Sawtimber

International 1/4 Scale

DBH	Number of Logs							
	1-Log	2-Log	3-Log	4-Log	5-Log	# Trees	Volume	% of Total
12	25					25	1.4	41.5%
14	8	1				9	0.8	23.8%
16	2	1				3	0.4	12.3%
18	2					2	0.3	8.5%
24		1				1	0.5	13.9%
Total	37	3				40	3.4	

Poplar - Sawtimber

International 1/4 Scale

DBH	Number of Logs							
	1-Log	2-Log	3-Log	4-Log	5-Log	# Trees	Volume	% of Total
12	43					43	2.4	3.7%
14	19	49	3			71	9.0	14.0%
16	8	48	17	2		75	15.0	23.3%
18	2	30	18	1		51	14.2	22.0%
20	1	14	8	3		26	9.5	14.8%
22	5	10	5	1		21	8.3	12.8%
24		3	1			4	2.1	3.2%
26		3	3			6	4.0	6.2%
Total	78	157	55	7		297	64.4	

Blenheim Tract Block 3

Timber Marketing & Management, Inc.

Cruise Date: Wednesday, July 01, 2020
 Owner's Name: Blenheim
 County/State: Northumberland County, VA

Red Oak - Sawtimber International 1/4 Scale

Number of Logs									
DBH	1-Log	2-Log	3-Log	4-Log	5-Log	# Trees	Volume	% of Total	
12	47					47	2.6	11.9%	
14	29	8				37	3.5	15.9%	
16	18	13				31	4.5	20.2%	
18	14	10	1			25	4.8	21.8%	
20	6	6				12	3.0	13.4%	
22	2	1				3	0.8	3.7%	
24		5				5	2.3	10.6%	
26		1				1	0.6	2.5%	
Total	116	44	1			161	22.2		

Virginia Pine - Sawtimber International 1/4 Scale

Number of Logs									
DBH	1-Log	2-Log	3-Log	4-Log	5-Log	# Trees	Volume	% of Total	
10	1					1	0.0	3.5%	
12	4					4	0.2	21.7%	
14	3					3	0.2	24.1%	
16		2				2	0.4	36.8%	
18	1					1	0.1	13.9%	
Total	9	2				11	1.0		

White Oak - Sawtimber International 1/4 Scale

Number of Logs									
DBH	1-Log	2-Log	3-Log	4-Log	5-Log	# Trees	Volume	% of Total	
12	5					5	0.3	8.5%	
14	8	2				10	0.9	28.7%	
16	2	3				5	0.8	24.1%	
18	2	4				6	1.3	38.8%	
Total	17	9				26	3.3		

Sawtimber Volume by Timber Type

Timber Type	# Trees	Volume	Avg BF/Tree	% of Total
Hardwood	619	104.0	168.0	12.9%
Pine	4,788	703.6	147.0	87.1%
Total	5,407	807.6	149.4	

Sawtimber Volume by DBH

DBH	# Trees	Volume	Avg BF/Tree	% of Total
10	1,006	41.0	40.7	5.1%
12	1,809	178.7	98.8	22.1%
14	1,325	224.9	169.8	27.9%
16	776	188.6	243.1	23.4%
18	326	103.4	317.2	12.8%
20	103	41.3	400.5	5.1%
22	40	17.2	430.2	2.1%
24	12	5.9	492.0	0.7%
26	10	6.6	662.5	0.8%
Total	5,407	807.6	149.4	

Sawtimber Volume by Species

Species	# Trees	Volume	Avg BF/Tree	% of Total
Aspen	1	0.1	83.0	0.0%
Black Cherry	4	0.8	200.8	0.1%
Gum	90	9.8	109.4	1.2%
Loblolly Pine	4,777	702.6	147.1	87.0%
Maple	40	3.4	84.4	0.4%
Poplar	297	64.4	216.9	8.0%
Red Oak	161	22.2	137.8	2.7%
Virginia Pine	11	1.0	93.9	0.1%
White Oak	26	3.3	126.9	0.4%
Total	5,407	807.6	149.4	

Blenheim Block 4

Timber Marketing & Management, Inc.

Professional Forestry Consultants

P.O. Box 396

Chesterfield, VA 23832-0000

Phone: (804) 796-9622 • Fax: (804) 796-9693

Pulpwood Cruise: 4.0%

Sawtimber Cruise: 100.0%

Cruise Date: Monday, July 20, 2020
 Owner's Name: Blenheim
 County/State: Northumberland County, VA
 Acreage: 40+/-
 Cruise Type: Tree Count
 Harvest Type: Clear Cut
 Total BF/Acre: 17,660
 Pine Vol/Tree: 163.0
 Hardwood Vol/Tree: 145.9

Volume Legend:

- 1) Diameters shown in inches (DBH)
- 2) Logs measured in 16' increments
- 3) Sawtimber volumes are shown in thousands of board feet (MBF)
- 4) Volume scale used for each species of sawtimber is noted
- 5) Pulpwood volumes are shown in standard cords (128 cubic feet)

Comments:

Pulpwood

Standard Cord

DBH	Wood Classification						# Trees	Volume	% of Total
	Pine	Soft Hardwood	Hard Hardwood	Cedar					
6	175	8	375	15	125	5			
8	500	50	225	18	50	4			
10	775	129	100	13	25	3			
12	175	46	25	5	25	5			
14		25	7						
Total	1,625	233	750	57	225	17			

Aspen - Sawtimber

International 1/4 Scale

DBH	Number of Logs					# Trees	Volume	% of Total
	1-Log	2-Log	3-Log	4-Log	5-Log			
14		1				1	0.1	100.0%
Total		1				1	0.1	

Beech - Sawtimber

International 1/4 Scale

DBH	Number of Logs					# Trees	Volume	% of Total
	1-Log	2-Log	3-Log	4-Log	5-Log			
16	1					1	0.1	100.0%
Total	1					1	0.1	

Black Cherry - Sawtimber

International 1/4 Scale

DBH	Number of Logs					# Trees	Volume	% of Total
	1-Log	2-Log	3-Log	4-Log	5-Log			
14	1					1	0.1	42.6%
16	1					1	0.1	57.4%
Total	2					2	0.2	

Chestnut Oak - Sawtimber

International 1/4 Scale

DBH	Number of Logs					# Trees	Volume	% of Total
	1-Log	2-Log	3-Log	4-Log	5-Log			
12	14					14	0.8	21.7%
14	7	3				10	1.0	27.8%
16	2	5	2			9	1.7	46.6%
18	1					1	0.1	4.0%
Total	24	8	2			34	3.6	

Gum - Sawtimber

International 1/4 Scale

DBH	Number of Logs					# Trees	Volume	% of Total
	1-Log	2-Log	3-Log	4-Log	5-Log			
12	6					6	0.3	23.6%
14		3				3	0.4	29.8%
16	2	1				3	0.4	29.1%
18		1				1	0.2	17.5%
Total	8	5				13	1.4	

Hickory - Sawtimber

International 1/4 Scale

DBH	Number of Logs					# Trees	Volume	% of Total
	1-Log	2-Log	3-Log	4-Log	5-Log			
12	2					2	0.1	100.0%
Total	2					2	0.1	

Loblolly Pine - Sawtimber

International 1/4 Scale

DBH	Number of Logs					# Trees	Volume	% of Total
	1-Log	2-Log	3-Log	4-Log	5-Log			
10	618	104				722	28.4	4.2%
12	158	302	811			1,271	134.0	19.9%
14	21	141	758	141		1,061	193.1	28.7%
16	8	52	487	155		702	182.7	27.1%
18	1	16	217	54		288	98.7	14.7%
20	1	2	49	13		65	28.4	4.2%
22		2	8	3		13	6.9	1.0%
24			1			1	0.6	0.1%
26		1				1	0.6	0.1%
Total	807	620	2,331	366		4,124	673.4	

Maple - Sawtimber

International 1/4 Scale

DBH	Number of Logs					# Trees	Volume	% of Total
	1-Log	2-Log	3-Log	4-Log	5-Log			
12	7					7	0.4	23.9%
14	4	1				5	0.5	28.9%
16	3	1				4	0.5	32.1%
18		1				1	0.2	15.1%
Total	14	3				17	1.6	

Pawlonia - Sawtimber

International 1/4 Scale

DBH	Number of Logs					# Trees	Volume	% of Total
	1-Log	2-Log	3-Log	4-Log	5-Log			
16	1					1	0.1	100.0%
Total	1					1	0.1	

Blenheim Block 4

Timber Marketing & Management, Inc.

Cruise Date: Monday, July 20, 2020
 Owner's Name: Blenheim
 County/State: Northumberland County, VA

Poplar - Sawtimber International 1/4 Scale

DBH	Number of Logs					# Trees	Volume	% of Total
	1-Log	2-Log	3-Log	4-Log	5-Log			
12	15					15	0.8	6.7%
14	3	6				9	1.1	8.8%
16		10	6			16	3.4	27.6%
18		7	2			9	2.4	19.3%
20		7				7	2.2	17.7%
22		2	2			4	1.8	14.7%
24			1			1	0.6	5.2%
Total	18	32	11			61	12.5	

Red Oak - Sawtimber International 1/4 Scale

DBH	Number of Logs					# Trees	Volume	% of Total
	1-Log	2-Log	3-Log	4-Log	5-Log			
12	15					15	0.8	11.6%
14	5	4				9	1.0	13.5%
16	1	4	1			6	1.1	15.5%
18	1	2				3	0.6	8.8%
20	1	4				5	1.4	19.8%
22	1	2				3	1.0	13.7%
24		1				1	0.5	6.5%
26			1			1	0.8	10.6%
Total	24	17	2			43	7.3	

Virginia Pine - Sawtimber International 1/4 Scale

DBH	Number of Logs					# Trees	Volume	% of Total
	1-Log	2-Log	3-Log	4-Log	5-Log			
10	4	2				6	0.3	39.1%
12	4	2				6	0.4	60.9%
Total	8	4				12	0.7	

White Oak - Sawtimber International 1/4 Scale

DBH	Number of Logs					# Trees	Volume	% of Total
	1-Log	2-Log	3-Log	4-Log	5-Log			
12	20					20	1.1	21.0%
14	12	2				14	1.3	24.0%
16	4					4	0.4	8.4%
18	1					1	0.1	2.7%
20	3	2				5	1.2	22.0%
22	1	1				2	0.6	11.4%
26		1				1	0.6	10.5%
Total	41	6				47	5.3	

Sawtimber Volume by Timber Type

Timber Type	# Trees	Volume	Avg BF/Tree	% of Total
Hardwood	222	32.4	145.9	4.6%
Pine	4,136	674.0	163.0	95.4%
Total	4,358	706.4	162.1	

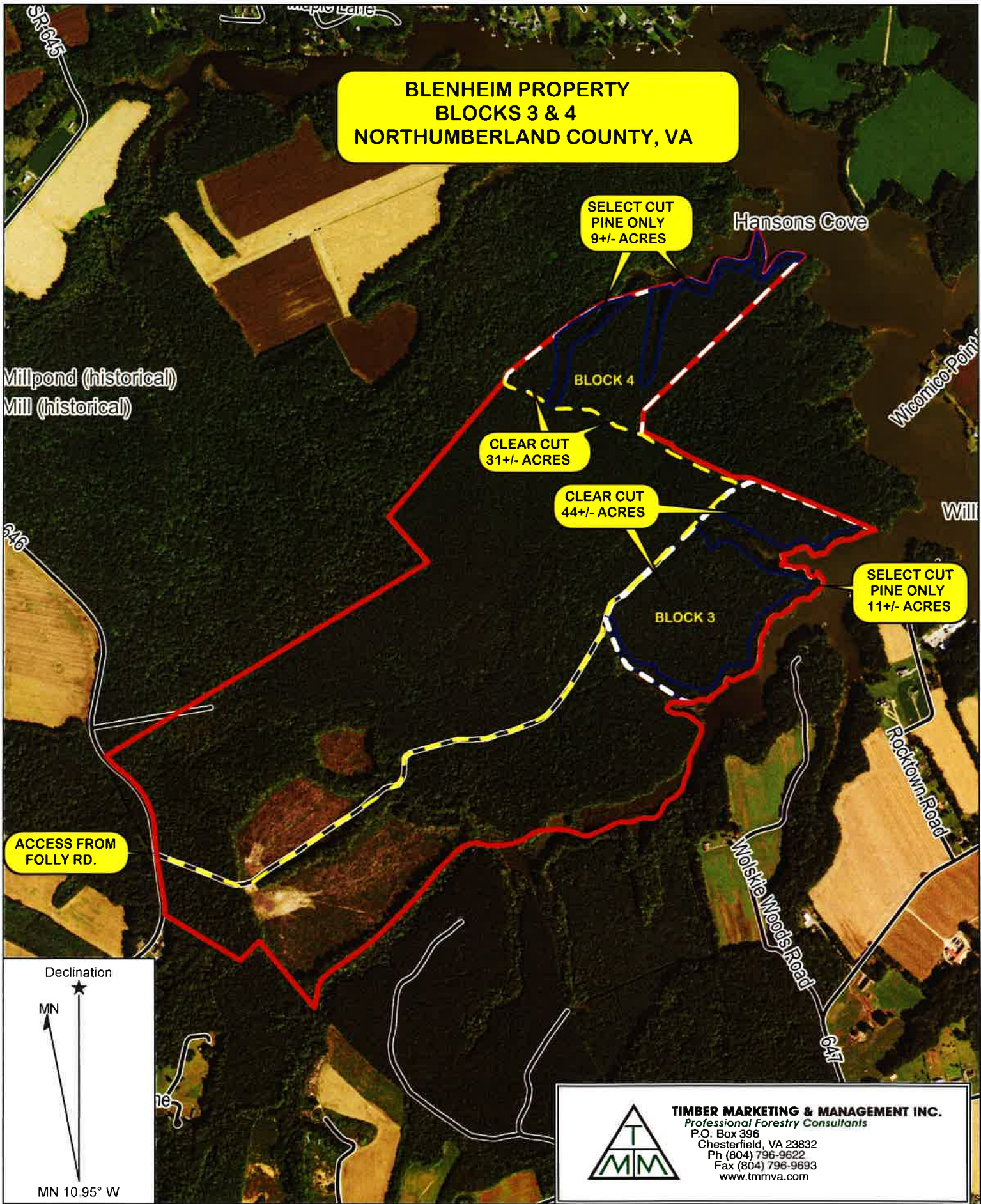
Sawtimber Volume by DBH

DBH	# Trees	Volume	Avg BF/Tree	% of Total
10	728	28.6	39.3	4.1%
12	1,356	138.8	102.3	19.6%
14	1,113	198.5	178.4	28.1%
16	747	190.7	255.3	27.0%
18	304	102.6	337.4	14.5%
20	82	33.2	404.8	4.7%
22	22	10.3	470.2	1.5%
24	3	1.8	585.7	0.2%
26	3	1.9	627.7	0.3%
Total	4,358	706.4	162.1	

Sawtimber Volume by Species

Species	# Trees	Volume	Avg BF/Tree	% of Total
Aspen	1	0.1	141.0	0.0%
Beech	1	0.1	112.0	0.0%
Black Cherry	2	0.2	97.5	0.0%
Chestnut Oak	34	3.6	106.4	0.5%
Gum	13	1.4	109.3	0.2%
Hickory	2	0.1	56.0	0.0%
Loblolly Pine	4,124	673.4	163.3	95.3%
Maple	17	1.6	96.4	0.2%
Pawlonia	1	0.1	112.0	0.0%
Poplar	61	12.5	204.1	1.8%
Red Oak	43	7.3	168.7	1.0%
Virginia Pine	12	0.7	55.8	0.1%
White Oak	47	5.3	113.3	0.8%
Total	4,358	706.4	162.1	

**BLenheim PROPERTY
BLOCKS 3 & 4
NORTHUMBERLAND COUNTY, VA**



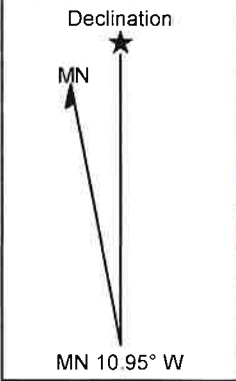
ACCESS FROM FOLLY RD.

SELECT CUT PINE ONLY 9+/- ACRES

CLEAR CUT 31+/- ACRES

CLEAR CUT 44+/- ACRES

SELECT CUT PINE ONLY 11+/- ACRES



TIMBER MARKETING & MANAGEMENT INC.
Professional Forestry Consultants
P.O. Box 396
Chesterfield, VA 23832
Ph (804) 796-9622
Fax (804) 796-9693
www.tmmva.com

Name: Blenheim Property, Blocks 3 & 4
Date: 07/23/20
Scale: 1 inch = 1,125 ft.

Location: Northumberland County, VA

**BLenheim PROPERTY
BLOCKS 3 & 4
NORTHUMBERLAND COUNTY, VA**

**SELECT CUT
PINE ONLY
9+/- ACRES**

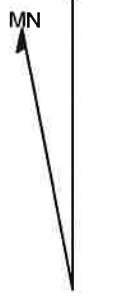
**CLEAR CUT
31+/- ACRES**

**CLEAR CUT
44+/- ACRES**

**SELECT CUT
PINE ONLY
11+/- ACRES**

**ACCESS FROM
FOLLY RD.**

Declination



MN 10.95° W



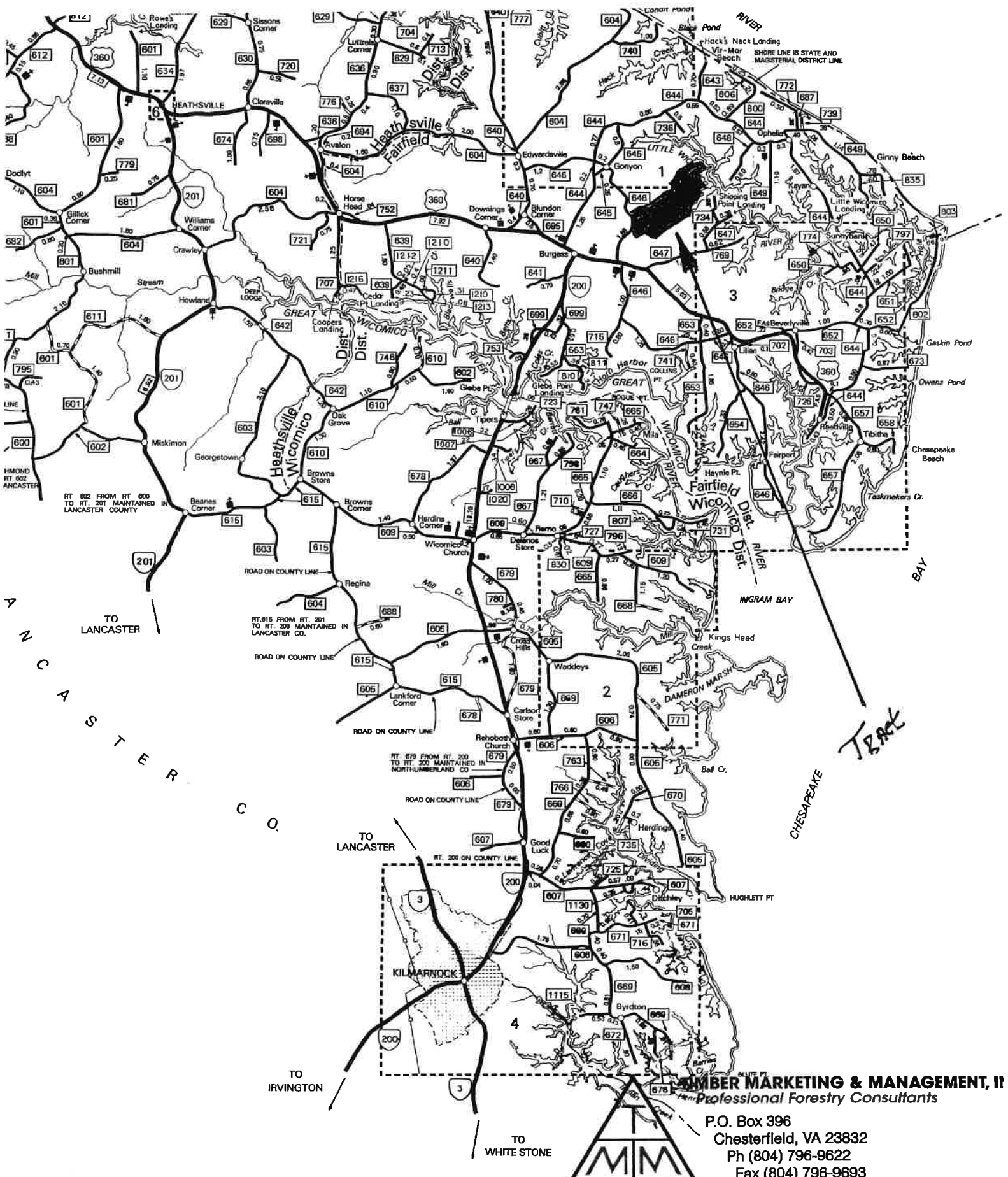
TIMBER MARKETING & MANAGEMENT INC.
Professional Forestry Consultants
P.O. Box 396
Chesterfield, VA 23832
Ph (804) 796-9622
Fax (804) 796-9693
www.tmmva.com

Name: Blenheim Property, Blocks 3 & 4
Date: 07/23/20
Scale: 1 inch = 1,125 ft.

Location: Northumberland County, VA

BLENHEIM LTD.

Northumberland co., Va.



BLLENHEIM MARKETING & MANAGEMENT, II
Professional Forestry Consultants

P.O. Box 396
Chesterfield, VA 23832
Ph (804) 796-9622
Fax (804) 796-9693

