**TIMBER MARKETING & MANAGEMENT INC.***Professional Forestry Consultants*

P.O. Box 396

Chesterfield, VA 23832

Ph (804) 796-9622

Fax (804) 796-9693

www.tmmva.com

Sale Date:	July 22, 2021
Time:	11:00 a.m.
Day:	Thursday
Total Vol./Acre:	6,316 B. F.
Hdwd. Vol/Tree:	524.7 B. F.

**SELECTIVE HARVEST
EXCELLENT QUALITY
HARDWOOD SAWTIMBER**

Having been employed by **Boaz Partners (FKA Stolz Family LP)** we solicit bids on the blue marked timber only on **248 +/- acres** in **Albemarle County, Virginia** and as shown on the attached map.

We made a 100% tree count of the sawtimber-size trees. Our estimate of their volume is:

Sawtimber

Poplar	920,600	Hickory	13,500
Northern Red Oak	247,800	Gum	3,100
Chestnut Oak	232,900	Maple	1,300
Red Oak	93,500	Ash	1,000
White Oak	51,900	Walnut	<u>700</u>

Total: 1,566,300 BF Int 1/4" Scale

The above volumes are not guaranteed; however, care was taken in the field to assemble the above tables. You should note how your utilization practices may vary from the above and make any necessary adjustments.

CONDITIONS

1. The landowner assumes responsibility for compliance with the Virginia State Seed Tree Law.
2. A period of time of **24 months** will be allowed to cut and remove the timber.
3. Roads **must** be maintained and restored to their original condition upon completion of the logging. Any newly constructed roads and decks must be left in a graded condition and must be seeded upon completion of logging. Any newly constructed haul roads, skid roads and log decks and all logging operations must be in accordance with the guidelines set out in the **Best Management Practices Manual** of the Virginia Department of Forestry.
4. No tops or laps will be allowed to remain in the streams, fields, buffers or over cutting boundaries. They must be pulled back immediately.
5. Only the blue marked trees are to be cut from Streamside Management Zones.
6. No logging will be permitted during excessively wet weather conditions as determined by Timber Marketing & Management, Inc. If logging is halted due to weather conditions, then an extension of time equal to the time lost will be granted.
7. A \$5,000.00 performance bond will be paid at closing and held by Timber Marketing & Management, Inc. to insure compliance with all BMP requirements, road maintenance and conditions of the Timber Purchase Contract.
8. The following payment terms are offered: 50% of the gross sales amount payable within 30 days of bid acceptance and 50% due in 90 days from date of contract or when logging begins, whichever occurs first.

VIEWING & SHOWING

For viewing the timber at your own leisure, there are blue Timber Marketing & Management, Inc. locks on each red gate with keys attached to the post. Please lock gate upon departure and return keys to the post.

There will be a scheduled showing at the end of Boaz Road on **Thursday July 15th, 2021 at 10:00 a.m.**

Only sealed bids will be accepted and owners reserve the right to reject any or all bids. BIDS SHOULD BE SUBMITTED PRIOR TO THE TIME OF BID OPENING AND CAN BE SUBMITTED VIA: Mail to: Timber Marketing & Management, Inc. P. O. Box 396, Chesterfield, Virginia 23832 **OR** hand delivered to 9520 Ironbridge Road, Chesterfield, Virginia **OR** telephoned in to 804-796-9622 **OR** faxed to 804-796-9693 **OR** emailed to tmm4u@aol.com Bids must be made on a lump-sum basis and must be received at this address no later than the posted bid date and time as shown on the cover. Closing shall take place within 30 days of bid acceptance.

An electronic copy of this sale notice, including maps and volumes, is available for download and viewing on our website at www.tmmva.com under the Timber Sale Notices section.

Sincerely,
Timber Marketing & Management, Inc.

A handwritten signature in black ink, appearing to read "Matt Sandman", with a long horizontal flourish extending to the right.

Matt Sandman, Area Manager
434-808-2102 Mobile
804-796-9622 Office

Covesville Orchards Select Cut

Timber Marketing & Management, Inc.

Professional Forestry Consultants

P.O. Box 396

Chesterfield, VA 23832-0000

Phone: (804) 796-9622 • Fax: (804) 796-9693

Sawtimber Cruise: 100.0%

Cruise Date: Wednesday, June 16, 2021
 Owner's Name: Covesville
 County/State: Albemarle County, VA
 Acreage: 248+/-
 Cruise Type: Tree Count
 Harvest Type: Select Cut
 Total BF/Acre: 6,316
 Hardwood Vol/Tree: 524,7

Volume Legend:

- 1) Diameters shown in inches (DBH)
- 2) Logs measured in 16' increments
- 3) Sawtimber volumes are shown in thousands of board feet (MBF)
- 4) Volume scale used for each species of sawtimber is noted
- 5) Pulpwood volumes are shown in standard cords (128 cubic feet)

Comments:

Ash - Sawtimber International 1/4 Scale

Number of Logs								
DBH	1-Log	2-Log	3-Log	4-Log	5-Log	# Trees	Volume	% of Total
24		1				1	0.5	45.7%
26		1				1	0.6	54.3%
Total		2				2	1.0	

Chestnut Oak - Sawtimber International 1/4 Scale

Number of Logs								
DBH	1-Log	2-Log	3-Log	4-Log	5-Log	# Trees	Volume	% of Total
14		2				2	0.3	0.1%
16	9	10				19	2.9	1.2%
18	15	53	8			76	18.0	7.7%
20	19	76	22			117	36.7	15.8%
22	16	91	32			139	55.6	23.9%
24	10	68	20			98	47.4	20.4%
26	4	33	8			45	25.8	11.1%
28	5	12	4			21	13.3	5.7%
30		6	3			9	7.7	3.3%
32		5	4			9	9.2	4.0%
34		2	4			6	7.5	3.2%
36		2	1			3	3.8	1.6%
38			1			1	1.8	0.8%
40		2				2	2.8	1.2%
Total	78	362	107			547	232.9	

Gum - Sawtimber International 1/4 Scale

Number of Logs								
DBH	1-Log	2-Log	3-Log	4-Log	5-Log	# Trees	Volume	% of Total
20		1				1	0.3	10.3%
22		3				3	1.2	38.0%
24		2	1			3	1.6	51.8%
Total		6	1			7	3.1	

Hickory - Sawtimber International 1/4 Scale

Number of Logs								
DBH	1-Log	2-Log	3-Log	4-Log	5-Log	# Trees	Volume	% of Total
16	2					2	0.2	1.7%
18		6	2			8	2.2	16.0%
20		8	5			13	4.6	34.4%
22	1	3	1			5	1.9	14.1%
24		2	3			5	2.9	21.2%
28		1				1	0.7	4.8%
30			1			1	1.1	7.8%
Total	3	20	12			35	13.5	

Maple - Sawtimber International 1/4 Scale

Number of Logs								
DBH	1-Log	2-Log	3-Log	4-Log	5-Log	# Trees	Volume	% of Total
22	2	1				3	0.8	63.9%
24		1				1	0.5	36.1%
Total	2	2				4	1.3	

Northern Red Oak - Sawtimber International 1/4 Scale

Number of Logs								
DBH	1-Log	2-Log	3-Log	4-Log	5-Log	# Trees	Volume	% of Total
14		1				1	0.1	0.1%
16	1	4				5	0.9	0.4%
18	1	13	1			15	3.7	1.5%
20	2	33	23			58	20.5	8.3%
22	1	59	39			99	43.6	17.6%
24	1	53	44			98	53.5	21.6%
26	2	26	34			62	41.2	16.6%
28		14	29			43	35.4	14.3%
30		7	9			16	14.8	6.0%
32		4	9			13	14.4	5.8%
34		2	4			6	7.5	3.0%
36		4				4	4.5	1.8%
38			1			1	1.8	0.7%
40			3			3	5.9	2.4%
Total	8	220	196			424	247.8	

Covesville Orchards Select Cut

Timber Marketing & Management, Inc.

Cruise Date: Wednesday, June 16, 2021
 Owner's Name: Covesville
 County/State: Albemarle County, VA

Poplar - Sawtimber International 1/4 Scale

DBH	Number of Logs					# Trees	Volume	% of Total
	1-Log	2-Log	3-Log	4-Log	5-Log			
12	3					3	0.2	0.0%
14	1	14	2			17	2.4	0.3%
16	4	22	30			56	12.3	1.3%
18	6	36	104	8		154	48.0	5.2%
20	5	61	227	67		360	151.3	16.4%
22	2	49	251	104		406	218.3	23.7%
24	5	32	198	50		285	182.5	19.8%
26		15	137	37		189	147.9	16.1%
28	1	9	58	11		79	70.7	7.7%
30		3	35	6		44	46.7	5.1%
32		1	9	3		13	16.2	1.8%
34	1		7	2		10	13.6	1.5%
36		2	2			4	5.4	0.6%
38			1			1	1.8	0.2%
40		1	1			2	3.4	0.4%
Total	28	245	1,062	288		1,623	920.6	

White Oak - Sawtimber International 1/4 Scale

DBH	Number of Logs					# Trees	Volume	% of Total
	1-Log	2-Log	3-Log	4-Log	5-Log			
16	1	3				4	0.7	1.3%
18	2	14	5			21	5.4	10.5%
20	5	37	6			48	15.1	29.1%
22	2	19	9			30	12.5	24.2%
24	1	9	7			17	9.0	17.3%
26		7				7	3.9	7.5%
28		1				1	0.7	1.3%
30	1	1	1			3	2.2	4.3%
36		1				1	1.1	2.2%
38		1				1	1.3	2.4%
Total	12	93	28			133	51.9	

Red Oak - Sawtimber International 1/4 Scale

DBH	Number of Logs					# Trees	Volume	% of Total
	1-Log	2-Log	3-Log	4-Log	5-Log			
16	5	3				8	1.1	1.2%
18	5	18				23	5.2	5.5%
20	3	34	8			45	14.6	15.6%
22		37	18			55	23.8	25.5%
24	4	19	14			37	19.0	20.3%
26		9	11			20	13.5	14.4%
28		8	2			10	7.0	7.5%
30		3				3	2.3	2.4%
32	1	2				3	2.2	2.4%
34		2	1			3	3.4	3.6%
40		1				1	1.4	1.5%
Total	18	136	54			208	93.5	

Walnut - Sawtimber International 1/4 Scale

DBH	Number of Logs					# Trees	Volume	% of Total
	1-Log	2-Log	3-Log	4-Log	5-Log			
18		1				1	0.2	34.6%
24		1				1	0.5	65.4%
Total		2				2	0.7	

Covesville Orchards Select Cut

Timber Marketing & Management, Inc.

Cruise Date: Wednesday, June 16, 2021
 Owner's Name: Covesville
 County/State: Albemarle County, VA

Sawtimber Volume by Timber Type

Timber Type	# Trees	Volume	Avg BF/Tree	% of Total
Hardwood	2,985	1,566.3	524.7	100.0%
Total	2,985	1,566.3	524.7	

Sawtimber Volume by DBH

DBH	# Trees	Volume	Avg BF/Tree	% of Total
12	3	0.2	56.0	0.0%
14	20	2.9	142.6	0.2%
16	94	18.1	192.8	1.2%
18	298	82.7	277.4	5.3%
20	642	243.2	378.8	15.5%
22	740	357.9	483.6	22.8%
24	546	317.2	581.0	20.3%
26	324	232.8	718.7	14.9%
28	155	127.8	824.3	8.2%
30	76	74.7	982.4	4.8%
32	38	42.1	1,106.6	2.7%
34	25	32.0	1,279.8	2.0%
36	12	14.8	1,233.5	0.9%
38	4	6.6	1,643.0	0.4%
40	8	13.5	1,690.0	0.9%
Total	2,985	1,566.3	524.7	

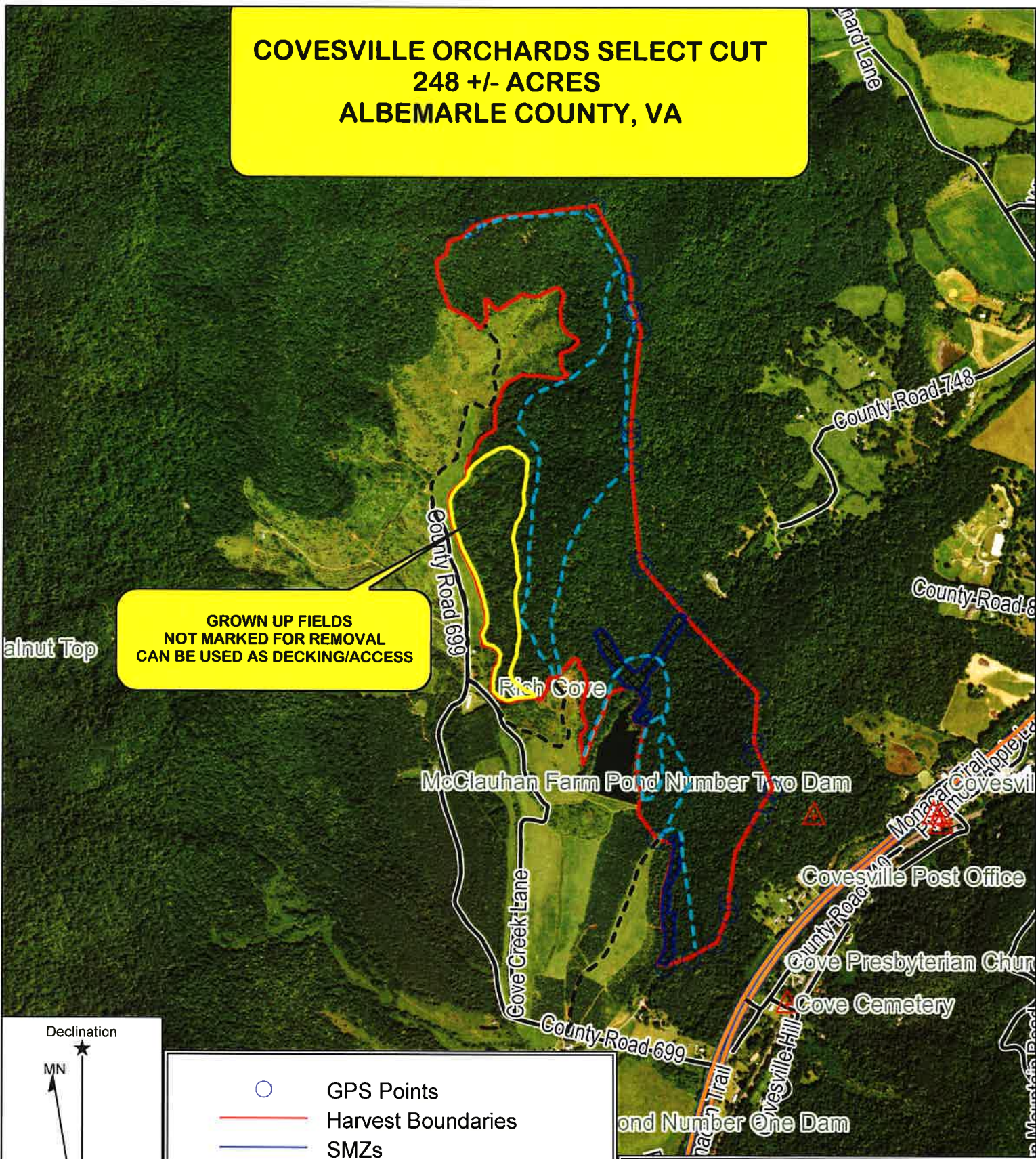
Included within the volumes of the stand and stock tables are the following over-sized trees:

- Red Oak 44" DBH – 2 Logs
- Chestnut Oak 44" DBH – 2 Logs
- Northern Red Oak 46" DBH – 3 Logs
- Northern Red Oak 60" DBH – 3 Logs

Sawtimber Volume by Species

Species	# Trees	Volume	Avg BF/Tree	% of Total
Ash	2	1.0	513.5	0.1%
Chestnut Oak	547	232.9	425.7	14.9%
Gum	7	3.1	436.7	0.2%
Hickory	35	13.5	386.1	0.9%
Maple	4	1.3	324.5	0.1%
Northern Red Oak	424	247.8	584.4	15.8%
Poplar	1,623	920.6	567.2	58.8%
Red Oak	208	93.5	449.6	6.0%
Walnut	2	0.7	358.5	0.0%
White Oak	133	51.9	390.4	3.3%
Total	2,985	1,566.3	524.7	

**COVESVILLE ORCHARDS SELECT CUT
248 +/- ACRES
ALBEMARLE COUNTY, VA**



**GROWN UP FIELDS
NOT MARKED FOR REMOVAL
CAN BE USED AS DECKING/ACCESS**

Walnut Top

Rich Cove

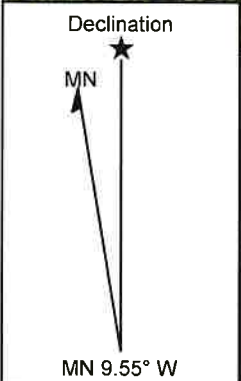
McClauhan Farm Pond Number Two Dam

Govesville Post Office

Cove Presbyterian Church

Cove Cemetery

Pond Number One Dam



- GPS Points
- Harvest Boundaries
- SMZs
- Old Field (No harvesting)
- - - - Access Roads
- - - - In Woods Trails

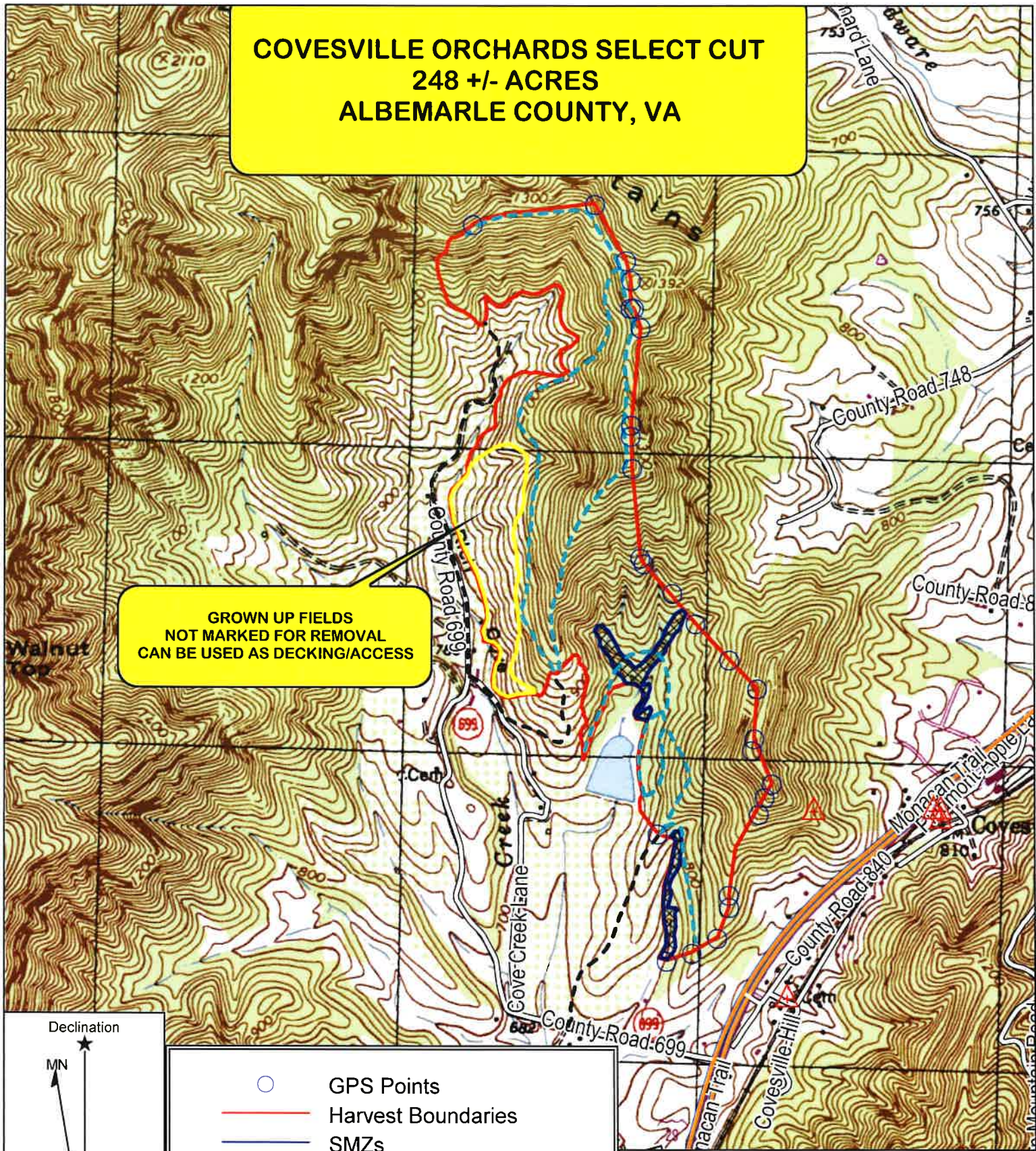


TIMBER MARKETING & MANAGEMENT INC.
Professional Forestry Consultants
P.O. Box 396
Chesterfield, VA 23832
Ph (804) 796-9622
Fax (804) 796-9693
www.tmmva.com

Name: Covesville Orchards Select Cut Location: Albemarle County, VA
 Date: June 22, 2021
 Scale: 1 inch = 1,404 ft.
 (C) Copyright 2016, Trimble Navigation Limited

**COVESVILLE ORCHARDS SELECT CUT
248 +/- ACRES
ALBEMARLE COUNTY, VA**

**GROWN UP FIELDS
NOT MARKED FOR REMOVAL
CAN BE USED AS DECKING/ACCESS**




Declination

MN



MN 9.55° W

-  GPS Points
-  Harvest Boundaries
-  SMZs
-  Old Field (No harvesting)
-  Access Roads
-  In Woods Trails



TIMBER MARKETING & MANAGEMENT INC.
Professional Forestry Consultants
P.O. Box 396
Chesterfield, VA 23832
Ph (804) 796-9622
Fax (804) 796-9693
www.tmmva.com

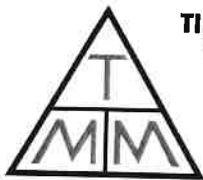
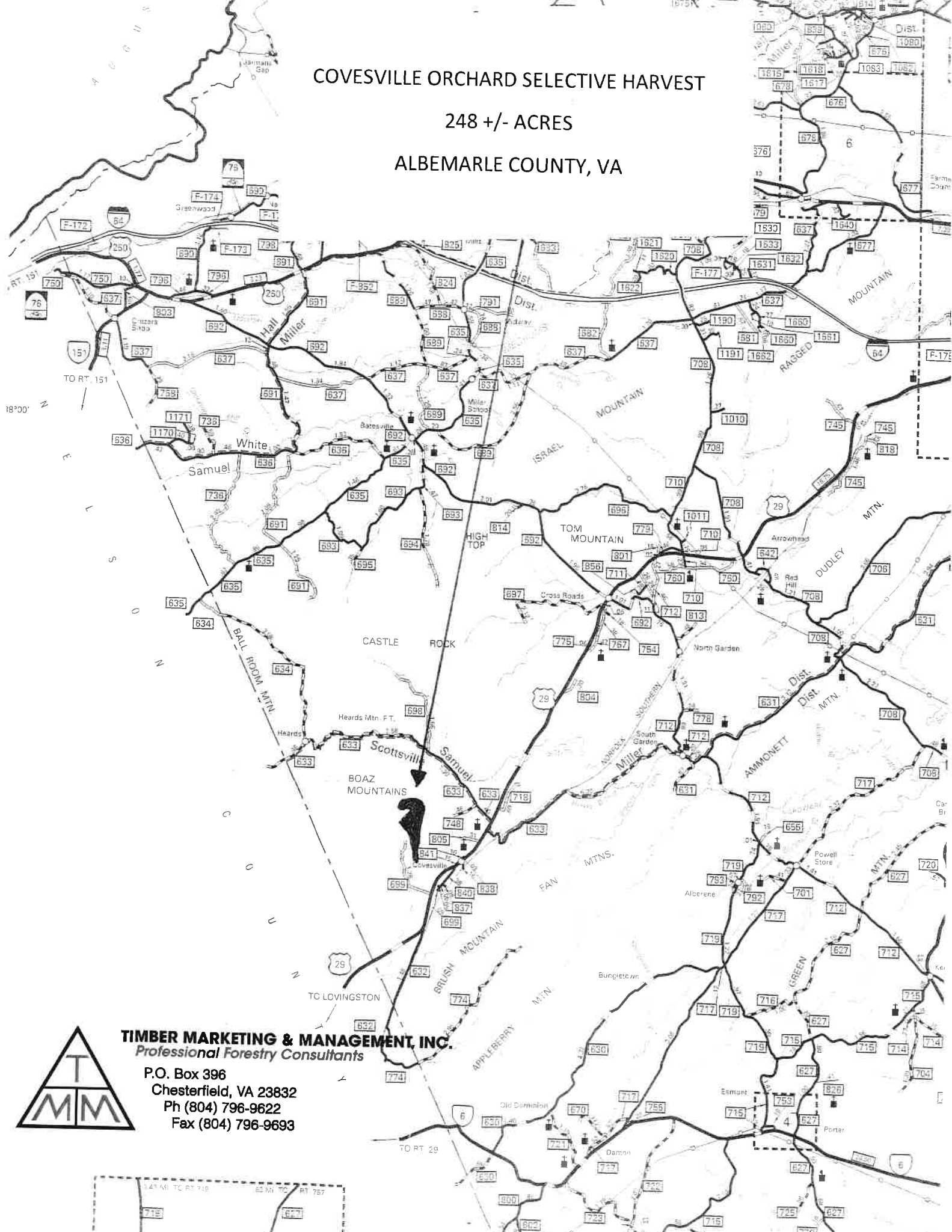
Name: Covesville Orchards Select Cut
Date: June 22, 2021
Scale: 1 inch = 1,404 ft.

Location: Albemarle County, VA

COVESVILLE ORCHARD SELECTIVE HARVEST

248 +/- ACRES

ALBEMARLE COUNTY, VA



TIMBER MARKETING & MANAGEMENT, INC.
Professional Forestry Consultants

P.O. Box 396
Chesterfield, VA 23832
Ph (804) 796-9622
Fax (804) 796-9693

