

TIMBER MARKETING & MANAGEMENT INC.

Professional Forestry Consultants

P.O. Box 396

Chesterfield, VA 23832

Ph (804) 796-9622

Fax (804) 796-9693

www.tmmva.com

Sale Date:	September 19, 2019
Time:	11:00 a.m.
Day:	Thursday
Total Vol./Acre:	16,642 B. F.
Pine Vol/Tree:	242 B. F.
Hdwd. Vol/Tree:	224 B. F.

CLEAR- CUT SALE

Having been employed by **CHERRY FAMILY LP** we solicit bids on all merchantable timber on **56 +/- acres** and on individual marked trees in the SMZ's as shown on the attached map and located in **Hanover County, Virginia**.

We made a 4% plot cruise of the pulpwood trees to be harvested. Our estimate of their volume is:

<u>Pulpwood</u>	<u>Cords</u>	<u>Tons</u>
Pine	109	283
Soft Hardwood	260	676
Hard Hardwood	<u>124</u>	<u>322</u>
Total:	493	1,282

We have made a 100% count of the sawtimber-size trees to be harvested. Our estimate of their volume is:

<u>Sawtimber</u>			
Loblolly Pine	653,100	Maple	2,200
Poplar	225,600	Misc. Hardwood	3,300
Red Oak	16,800	Virginia Pine	12,800
Gum	6,600	Black Walnut	600
White Oak	5,300	Ash	100
Hickory	3,100	Black Cherry	<u>100</u>
Northern Red Oak	2,400		
Total:			932,000 BF Int 1/4" Scale

The above volumes are not guaranteed; however, care was taken in the field to assemble the above tables. You should note how your utilization practices may vary from the above and make any necessary adjustments.

Conditions

1. The landowner assumes responsibility for compliance with the Virginia State Seed Tree Law.
2. A period of time of 24 months will be allowed to cut and remove the timber.
3. Roads **must** be maintained and restored to their original condition upon completion of the logging. Any newly constructed roads and decks must be left in a graded condition and must be seeded upon completion of logging. Any newly constructed haul roads, skid roads and log decks and all logging operations must be in accordance with the guidelines set out in the **Best Management Practices Manual** of the Virginia Department of Forestry.
4. No tops or laps will be allowed to remain in the streams, fields, buffers or over cutting boundaries. They must be pulled back immediately.
5. Only the blue marked trees are to be cut from Streamside Management Zones.
6. No logging will be permitted during excessively wet weather conditions as determined by Timber Marketing & Management, Inc. If logging is halted due to weather conditions, then an extension of time equal to the time lost will be granted.
7. A \$3,000.00 performance bond will be paid at closing and held by Timber Marketing & Management, Inc. to insure compliance with all BMP requirements, road maintenance and conditions of the Timber Purchase Contract.

Only sealed bids will be accepted and owners reserve the right to reject any or all bids. BIDS SHOULD BE SUBMITTED PRIOR TO THE TIME OF BID OPENING AND CAN BE SUBMITTED VIA: Mail to: Timber Marketing & Management, Inc. P. O. Box 396, Chesterfield, Virginia 23832 **OR** hand delivered to 9520 Ironbridge Road, Chesterfield, Virginia **OR** telephoned in to 804-796-9622 **OR** faxed to 804-796-9693 **OR** emailed to tmm4u@aol.com Bids must be made on a lump-sum basis and must be received at this address no later than the posted bid date and time as shown on the cover. Closing shall take place within 30 days of bid acceptance.

There will be no scheduled show trip of the tract; however, you may call and set an appointment or you may inspect the property at your own leisure.

An electronic copy of this sale notice, including maps and volumes, is available for download and viewing on our website at www.tmmva.com under the Timber Sale Notices section.

Sincerely,
Timber Marketing & Management, Inc.



Andrew J. Lindberg, Vice President
804-338-8436 mobile
804-796-9622 office

Cherry Family LP - Block 1

Timber Marketing & Management, Inc.

Professional Forestry Consultants

P.O. Box 396

Chesterfield, VA 23832-0000

Phone: (804) 796-9622 • Fax: (804) 796-9693

Pulpwood Cruise: 4.0%

Sawtimber Cruise: 100.0%

Cruise Date: Wednesday, July 24, 2019
 Owner's Name: Cherry Family LP
 County/State: Hanover County, VA
 Acreage: 56+/-
 Cruise Type: Tree Count
 Harvest Type: Clear Cut
 Total BF/Acre: 16,642
 Pine Vol/Tree: 242.0
 Hardwood Vol/Tree: 223.6

Volume Legend:

- 1) Diameters shown in inches (DBH)
- 2) Logs measured in 16' increments
- 3) Sawtimber volumes are shown in thousands of board feet (MBF)
- 4) Volume scale used for each species of sawtimber is noted
- 5) Pulpwood volumes are shown in standard cords (128 cubic feet)

Comments:

Pulpwood

Standard Cord

Wood Classification

DBH	Pine		Soft Hardwood		Hard Hardwood		Cedar	
	# Trees	Volume	# Trees	Volume	# Trees	Volume	# Trees	Volume
6	400	18	1,125	44	675	26		
8	200	20	675	53	275	22		
10	350	58	550	73	250	33		
12	50	13	250	50	150	30		
14			150	40	50	13		
Total	1,000	109	2,750	260	1,400	124		

Ash - Sawtimber

International 1/4 Scale

Number of Logs

DBH	1-Log	2-Log	3-Log	4-Log	5-Log	# Trees	Volume	% of Total
18	1					1	0.1	100.0%
Total	1					1	0.1	

Black Cherry - Sawtimber

International 1/4 Scale

Number of Logs

DBH	1-Log	2-Log	3-Log	4-Log	5-Log	# Trees	Volume	% of Total
12	1					1	0.1	100.0%
Total	1					1	0.1	

Black Walnut - Sawtimber

International 1/4 Scale

Number of Logs

DBH	1-Log	2-Log	3-Log	4-Log	5-Log	# Trees	Volume	% of Total
12	1					1	0.1	9.0%
14	3					3	0.2	40.2%
20		1				1	0.3	50.7%
Total	4	1				5	0.6	

Gum - Sawtimber

International 1/4 Scale

Number of Logs

DBH	1-Log	2-Log	3-Log	4-Log	5-Log	# Trees	Volume	% of Total
12	19					19	1.1	16.0%
14	8	15				23	2.8	41.8%
16	4	9	1			14	2.4	36.3%
22		1				1	0.4	5.8%
Total	31	25	1			57	6.6	

Hickory - Sawtimber

International 1/4 Scale

Number of Logs

DBH	1-Log	2-Log	3-Log	4-Log	5-Log	# Trees	Volume	% of Total
12	3					3	0.2	5.5%
14	3	2				5	0.5	17.2%
16	5	1				6	0.8	24.4%
18	1	4				5	1.1	36.9%
20	1	1				2	0.5	16.1%
Total	13	8				21	3.1	

Loblolly Pine - Sawtimber

International 1/4 Scale

Number of Logs

DBH	1-Log	2-Log	3-Log	4-Log	5-Log	# Trees	Volume	% of Total
10	106	8				114	4.3	0.7%
12	105	124	116			345	31.2	4.8%
14	30	161	339	5		535	89.3	13.7%
16	17	148	392	33		590	140.4	21.5%
18	7	125	336	37		505	159.8	24.5%
20	5	75	225	11		316	126.2	19.3%
22	4	48	100	4		156	74.8	11.5%
24	2	7	27			36	21.2	3.2%
26		2	5			7	5.0	0.8%
28			1			1	0.9	0.1%
Total	276	698	1,541	90		2,605	653.1	

Cherry Family LP - Block 1

Timber Marketing & Management, Inc.

Cruise Date: Wednesday, July 24, 2019
 Owner's Name: Cherry Family LP
 County/State: Hanover County, VA

Maple - Sawtimber International 1/4 Scale

Number of Logs								
DBH	1-Log	2-Log	3-Log	4-Log	5-Log	# Trees	Volume	% of Total
12	1					1	0.1	2.6%
14	6					6	0.5	23.1%
16	1					1	0.1	5.2%
18	3	1				4	0.7	31.5%
20	1	1				2	0.5	23.0%
26	1					1	0.3	14.6%
Total	13	2				15	2.2	

Miscellaneous Hardwood - Sawtimber International 1/4 Scale

Number of Logs								
DBH	1-Log	2-Log	3-Log	4-Log	5-Log	# Trees	Volume	% of Total
12	1					1	0.1	1.7%
14	7					7	0.6	17.6%
16	6	1				7	0.9	26.1%
18	1	2				3	0.6	19.4%
20		1	2			3	1.2	35.3%
Total	15	4	2			21	3.3	

Northern Red Oak - Sawtimber International 1/4 Scale

Number of Logs								
DBH	1-Log	2-Log	3-Log	4-Log	5-Log	# Trees	Volume	% of Total
12	1					1	0.1	2.4%
16	1					1	0.1	4.7%
18		1				1	0.2	10.5%
20	2	2				4	1.0	41.9%
22	1					1	0.2	9.4%
24	1	1				2	0.7	31.1%
Total	6	4				10	2.4	

Poplar - Sawtimber International 1/4 Scale

Number of Logs								
DBH	1-Log	2-Log	3-Log	4-Log	5-Log	# Trees	Volume	% of Total
12	130	6				136	7.8	3.5%
14	55	105	2			162	19.7	8.8%
16	31	100	56	2		189	37.4	16.6%
18	16	74	56	2		148	40.3	17.9%
20	12	49	44			105	36.3	16.1%
22	11	45	21	1		78	31.6	14.0%
24	5	26	19			50	25.8	11.4%
26	1	14	8			23	14.3	6.3%
28		3	2			5	3.8	1.7%
30	1	2	1			4	3.0	1.3%
32		1				1	0.9	0.4%
34		2	2			4	4.7	2.1%
Total	262	427	211	5		905	225.6	

Red Oak - Sawtimber International 1/4 Scale

Number of Logs								
DBH	1-Log	2-Log	3-Log	4-Log	5-Log	# Trees	Volume	% of Total
12	34					34	1.9	11.3%
14	22	2				24	2.1	12.5%
16	11	7				18	2.6	15.2%
18	8	6				14	2.6	15.7%
20	5	4				9	2.2	12.9%
22	2	6				8	2.8	16.4%
24	3	4				7	2.7	15.9%
Total	85	29				114	16.8	

Virginia Pine - Sawtimber International 1/4 Scale

Number of Logs								
DBH	1-Log	2-Log	3-Log	4-Log	5-Log	# Trees	Volume	% of Total
10	31					31	1.1	8.7%
12	45	5				50	3.0	23.3%
14	16	33				49	6.0	46.7%
16	4	8	1			13	2.2	17.4%
18	1					1	0.1	1.1%
20	2					2	0.4	2.8%
Total	99	46	1			146	12.8	

White Oak - Sawtimber International 1/4 Scale

Number of Logs								
DBH	1-Log	2-Log	3-Log	4-Log	5-Log	# Trees	Volume	% of Total
12	10					10	0.6	10.5%
14	9	3				12	1.2	22.0%
16	7	2				9	1.2	21.9%
18	1	2				3	0.6	12.1%
20	1	3				4	1.1	21.1%
22		1				1	0.4	7.3%
24	1					1	0.3	5.0%
Total	29	11				40	5.3	

Cherry Family LP - Block 1

Timber Marketing & Management, Inc.

Cruise Date: Wednesday, July 24, 2019
 Owner's Name: Cherry Family LP
 County/State: Hanover County, VA

Sawtimber Volume by Timber Type

<u>Timber Type</u>	<u># Trees</u>	<u>Volume</u>	<u>Avg BF/Tree</u>	<u>% of Total</u>
Hardwood	1,190	266.1	223.6	28.6%
Pine	2,751	665.9	242.0	71.4%
Total	3,941	932.0	236.5	

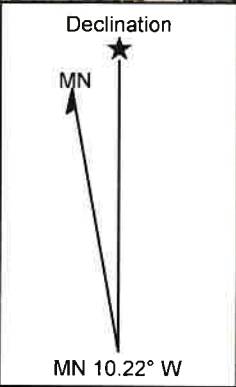
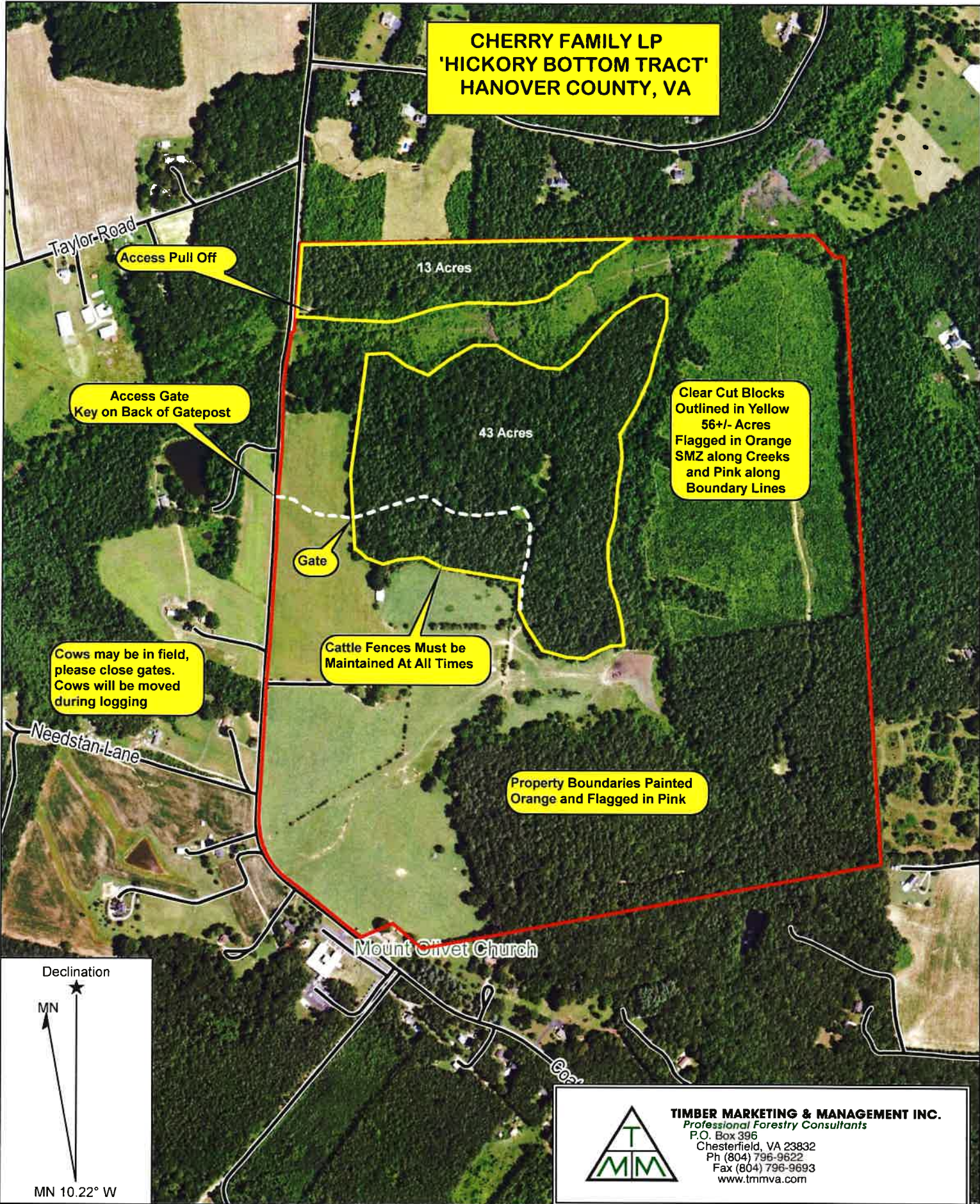
Sawtimber Volume by DBH

<u>DBH</u>	<u># Trees</u>	<u>Volume</u>	<u>Avg BF/Tree</u>	<u>% of Total</u>
10	145	5.4	37.3	0.6%
12	602	46.0	76.4	4.9%
14	826	123.0	148.9	13.2%
16	848	188.1	221.8	20.2%
18	685	206.3	301.2	22.1%
20	448	169.6	378.6	18.2%
22	245	110.1	449.6	11.8%
24	96	50.6	527.5	5.4%
26	31	19.5	630.0	2.1%
28	6	4.7	779.0	0.5%
30	4	3.0	747.5	0.3%
32	1	0.9	870.0	0.1%
34	4	4.7	1,186.0	0.5%
Total	3,941	932.0	236.5	

Sawtimber Volume by Species

<u>Species</u>	<u># Trees</u>	<u>Volume</u>	<u>Avg BF/Tree</u>	<u>% of Total</u>
Ash	1	0.1	144.0	0.0%
Black Cherry	1	0.1	56.0	0.0%
Black Walnut	5	0.6	123.8	0.1%
Gum	57	6.6	116.6	0.7%
Hickory	21	3.1	146.7	0.3%
Loblolly Pine	2,605	653.1	250.7	70.1%
Maple	15	2.2	143.7	0.2%
Miscellaneous Hardwood	21	3.3	157.5	0.4%
Northern Red Oak	10	2.4	236.2	0.3%
Poplar	905	225.6	249.3	24.2%
Red Oak	114	16.8	147.5	1.8%
Virginia Pine	146	12.8	87.7	1.4%
White Oak	40	5.3	132.8	0.6%
Total	3,941	932.0	236.5	

**CHERRY FAMILY LP
'HICKORY BOTTOM TRACT'
HANOVER COUNTY, VA**

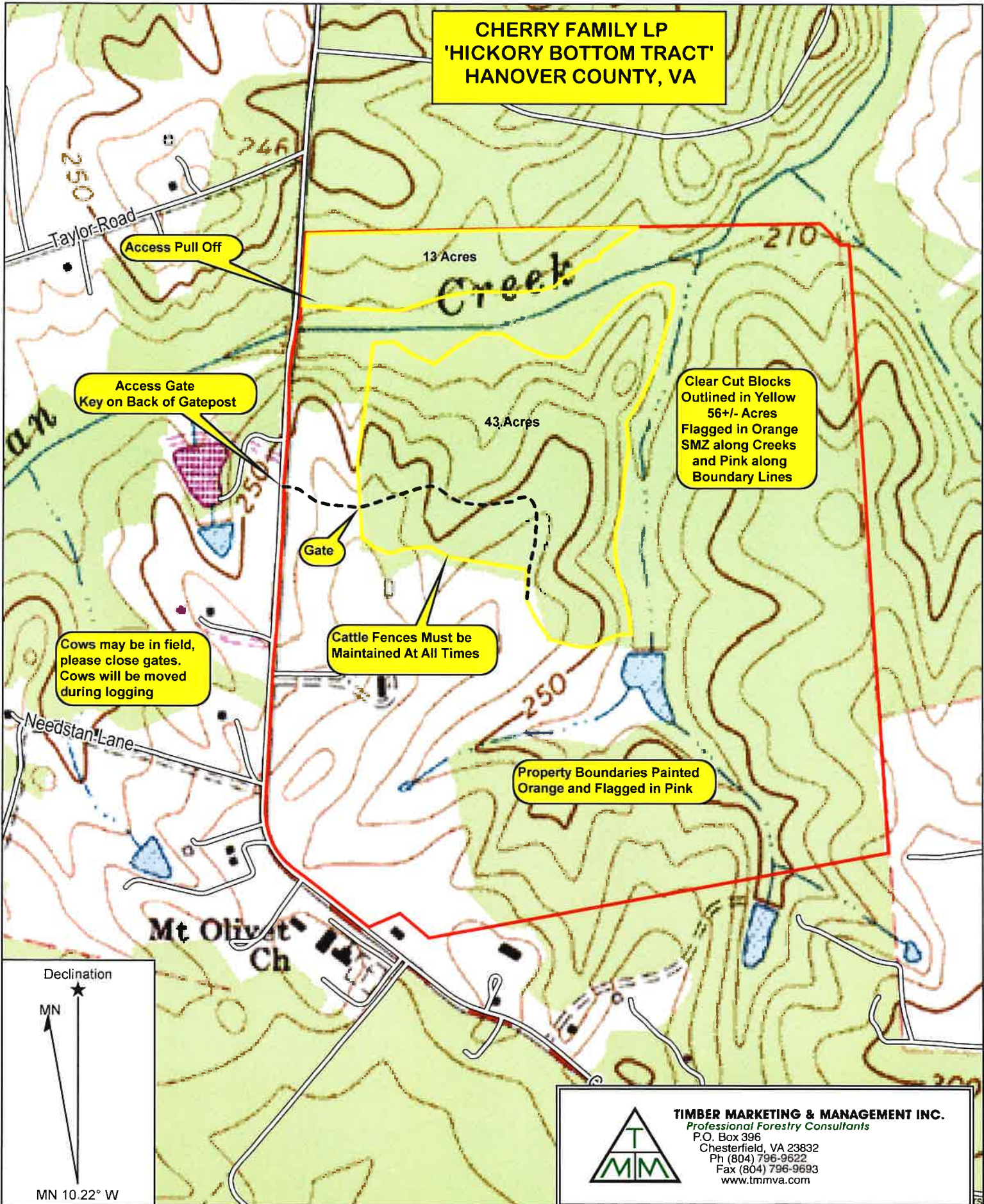


TIMBER MARKETING & MANAGEMENT INC.
Professional Forestry Consultants
P.O. Box 396
Chesterfield, VA 23832
Ph (804) 796-9622
Fax (804) 796-9693
www.tmmva.com

Name: CHERRY FAMILY LP HICKORY BOTTOM TRACT
Date: 08/22/19
Scale: 1 inch = 666 ft.

Location: 037° 50' 34.2673" N, 077° 36' 22.7117" W
56+/- ACRE CLEAR-CUT

**CHERRY FAMILY LP
'HICKORY BOTTOM TRACT'
HANOVER COUNTY, VA**



Access Pull Off

Access Gate
Key on Back of Gatepost

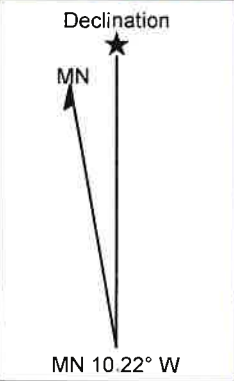
Gate

Cows may be in field,
please close gates.
Cows will be moved
during logging

Cattle Fences Must be
Maintained At All Times

Clear Cut Blocks
Outlined in Yellow
56+/- Acres
Flagged in Orange
SMZ along Creeks
and Pink along
Boundary Lines

Property Boundaries Painted
Orange and Flagged in Pink

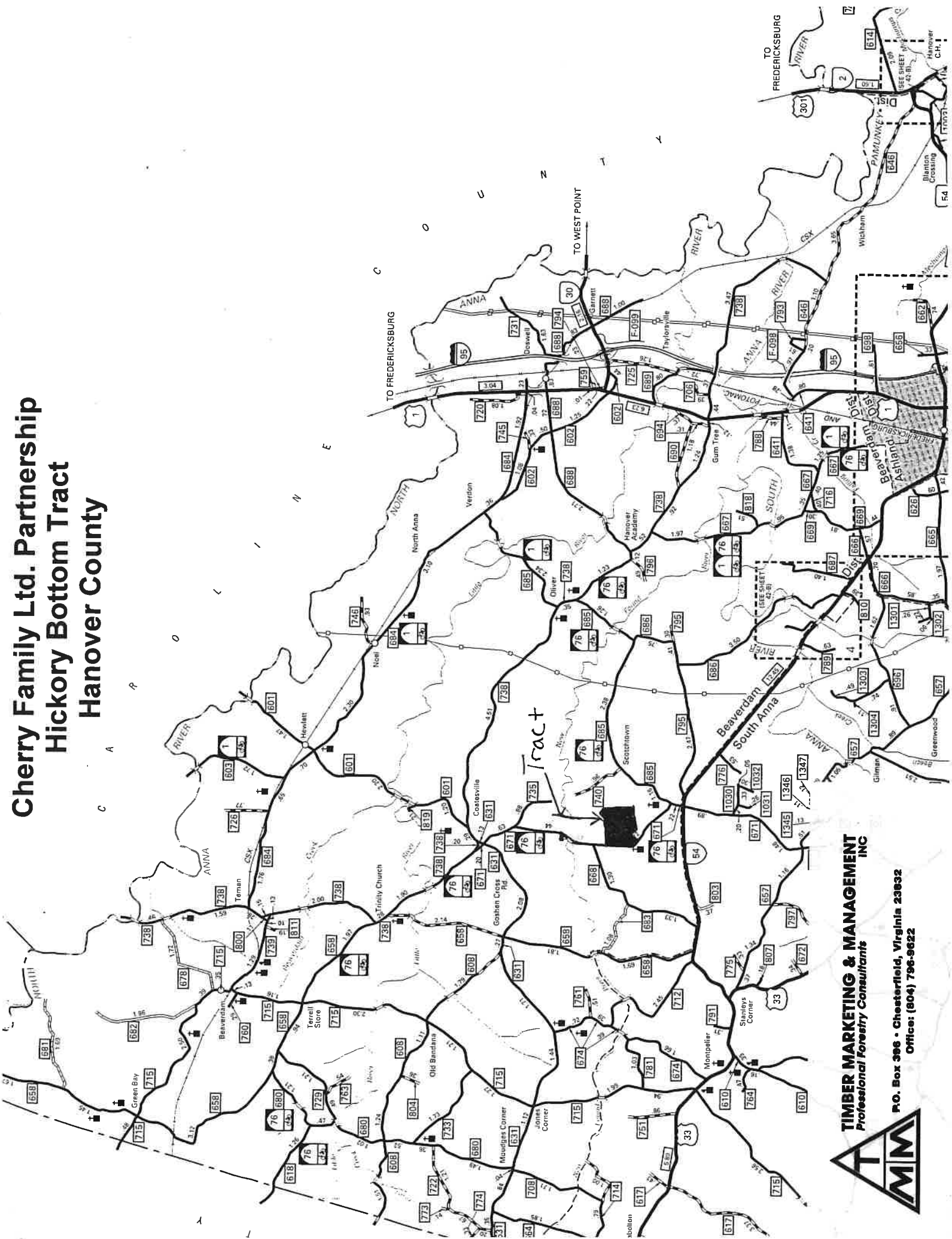


TIMBER MARKETING & MANAGEMENT INC.
Professional Forestry Consultants
P.O. Box 396
Chesterfield, VA 23832
Ph (804) 796-9622
Fax (804) 796-9693
www.tmmva.com

Name: CHERRY FAMILY LP HICKORY BOTTOM TRACT
Date: 08/22/19
Scale: 1 inch = 666 ft.

Location: 037° 50' 33.6422" N, 077° 36' 23.0374" W
56+/- ACRE CLEAR-CUT

Cherry Family Ltd. Partnership Hickory Bottom Tract Hanover County



TIMBER MARKETING & MANAGEMENT INC
Professional Forestry Consultants

P.O. Box 396 • Chesterfield, Virginia 23632
Office: (804) 796-9622

