

TIMBER MARKETING & MANAGEMENT INC.
 Professional Forestry Consultants
 P.O. Box 396
 Chesterfield, VA 23832
 Ph (804) 796-9622
 Fax (804) 796-9693
 www.tmmva.com

Sale Date:	November 4, 2021	
Time:	12:00 p.m.	
Day:	Thursday	
	Clear Cut	SMZ
Total Vol./Acre:	8,077 B.F.	5,385 B. F.
Pine Vol/Tree:	88 B.F.	131 B. F.
Hdwd. Vol/Tree:	- B.F.	284 B. F.

CLEAR CUT SALE EXCELLENT ACCESS & PRODUCT MIX

Having been employed by **Childrey Creek Plantation, LLC** we solicit bids on all merchantable timber on **37 +/- acres (Clear Cut)** and on the orange marked trees only on **4 +/- acres (SMZ's)** in **Halifax County, Virginia** and as shown on the attached map.

We made a 10% plot cruise of the pulpwood-size trees to be harvested. Our estimate of their volume is:

	<u>Clear Cut</u>	<u>Total</u>
<u>Pulpwood</u>	<u>Cords</u>	<u>Tons</u>
Pine	576	1,498
Soft Hardwood	56	146
Hard Hardwood	<u>19</u>	<u>49</u>
Total:	651	1,693

We made a 10% cruise in the clear cut block and a 100% tree count in the SMZ's of the sawtimber-size trees to be harvested. Our estimate of their volume is:

	<u>10% Cruise</u>	<u>100% Count</u>	
<u>Sawtimber</u>	<u>Clear Cut</u>	<u>SMZ</u>	<u>Total</u>
Loblolly Pine	298,800	19,800	318,600
Poplar	0	900	900
White Oak	0	600	600
Gum	<u>0</u>	<u>200</u>	<u>200</u>
	298,800	21,500	320,300 Total BF Int 1/4" Scale

The above volumes are not guaranteed; however, care was taken in the field to assemble the above tables. You should note how your utilization practices may vary from the above and make any necessary adjustments.

Conditions

1. The landowner assumes responsibility for compliance with the Virginia State Seed Tree Law.
2. A period of time of **24 months** will be allowed to cut and remove the timber.
3. Roads **must** be maintained and restored to their original condition upon completion of the logging. Any newly constructed roads and decks must be left in a graded condition and must be seeded upon completion of logging. Any newly constructed haul roads, skid roads and log decks and all logging operations must be in accordance with the guidelines set out in the **Best Management Practices Manual** of the Virginia Department of Forestry.
4. No tops or laps will be allowed to remain in the streams, fields, buffers or over cutting boundaries. They must be pulled back immediately.
5. Only the ORANGE marked trees are to be cut from Streamside Management Zones.
6. DO NOT CUT the 6 trees marked with white paint at chest height. These 6 trees are reserved from the sale.
7. No logging will be permitted during excessively wet weather conditions as determined by Timber Marketing & Management, Inc. If logging is halted due to weather conditions, then an extension of time equal to the time lost will be granted.
8. A **\$2,000.00** performance bond will be paid at closing and held by Timber Marketing & Management, Inc. to insure compliance with all BMP requirements, road maintenance and conditions of the Timber Purchase Contract.

Only sealed bids will be accepted and owners reserve the right to reject any or all bids. BIDS SHOULD BE SUBMITTED PRIOR TO THE TIME OF BID OPENING AND CAN BE SUBMITTED VIA: Mail to: Timber Marketing & Management, Inc. P. O. Box 396, Chesterfield, Virginia 23832 **OR** hand delivered to 9520 Ironbridge Road, Chesterfield, Virginia **OR** telephoned in to 804-796-9622 **OR** faxed to 804-796-9693 **OR** emailed to office@tmmva.com Bids must be made on a lump-sum basis and must be received at this address no later than the posted bid date and time as shown on the cover. Closing shall take place within 30 days of bid acceptance.

There will be no scheduled show trip of the tract; however, you may call and set an appointment or you may inspect the property at your own leisure.

An electronic copy of this sale notice, including maps and volumes, is available for download and viewing on our website at www.tmmva.com under the Timber Sale Notices section.

Sincerely,
Timber Marketing & Management, Inc.

A handwritten signature in black ink, appearing to read "Matt Sandman", with a long horizontal flourish extending to the right.

Matt Sandman, Area Manager
434-808-2102 Mobile
804-796-9622 Office

Childrey Creek Plantation Tract

Timber Marketing & Management, Inc.

Professional Forestry Consultants

P.O. Box 396

Chesterfield, VA 23832-0000

Phone: (804) 796-9622 • Fax: (804) 796-9693

Pulpwood Cruise: 10.0%

Sawtimber Cruise: 10.0%

Cruise Date: Monday, October 11, 2021
 Owner's Name: Childrey Creek Plantation LLC
 County/State: Halifax County, VA
 Acreage: 37+/-
 Cruise Type: Plot Cruise
 Harvest Type: Clear Cut
 Total BF/Acre: 8,077
 Pine Vol/Tree: 87.9

Volume Legend:

- 1) Diameters shown in inches (DBH)
- 2) Logs measured in 16' increments
- 3) Sawtimber volumes are shown in thousands of board feet (MBF)
- 4) Volume scale used for each species of sawtimber is noted
- 5) Pulpwood volumes are shown in standard cords (128 cubic feet)

Comments:

Pulpwood Standard Cord

DBH	Wood Classification							
	Pine		Soft Hardwood		Hard Hardwood		Cedar	
	# Trees	Volume	# Trees	Volume	# Trees	Volume	# Trees	Volume
6	2,100	94	520	20	180	7		
8	3,130	313	300	24	100	8		
10	860	143	90	12	30	4		
12	70	18						
14	20	8						
Total	6,180	576	910	56	310	19		

Loblolly Pine - Sawtimber International 1/4 Scale

DBH	Number of Logs					# Trees	Volume	% of Total
	1-Log	2-Log	3-Log	4-Log	5-Log			
10	640	470				1,110	50.8	17.0%
12	240	1,180	200			1,620	146.0	48.9%
14	50	390	160			600	88.9	29.7%
16	10	50	10			70	13.2	4.4%
Total	940	2,090	370			3,400	298.8	

Sawtimber Volume by Timber Type

Timber Type	# Trees	Volume	Avg BF/Tree	% of Total
Pine	3,400	298.8	87.9	100.0%
Total	3,400	298.8	87.9	

Sawtimber Volume by DBH

DBH	# Trees	Volume	Avg BF/Tree	% of Total
10	1,110	50.8	45.7	17.0%
12	1,620	146.0	90.1	48.9%
14	600	88.9	148.2	29.7%
16	70	13.2	188.3	4.4%
Total	3,400	298.8	87.9	

Sawtimber Volume by Species

Species	# Trees	Volume	Avg BF/Tree	% of Total
Loblolly Pine	3,400	298.8	87.9	100.0%
Total	3,400	298.8	87.9	

Childrey Creek Plantation Tract - SMZ's

Timber Marketing & Management, Inc.

Professional Forestry Consultants

P.O. Box 396

Chesterfield, VA 23832-0000

Phone: (804) 796-9622 • Fax: (804) 796-9693

Sawtimber Cruise: 100.0%

Cruise Date: Monday, October 11, 2021
 Owner's Name: Childrey Creek Plantation LLC
 County/State: Halifax County, VA
 Acreage: 4+/-
 Cruise Type: Tree Count
 Harvest Type: Select Cut
 Total BF/Acre: 5,385
 Pine Vol/Tree: 130.5
 Hardwood Vol/Tree: 283.7

Volume Legend:

- 1) Diameters shown in inches (DBH)
- 2) Logs measured in 16' increments
- 3) Sawtimber volumes are shown in thousands of board feet (MBF)
- 4) Volume scale used for each species of sawtimber is noted
- 5) Pulpwood volumes are shown in standard cords (128 cubic feet)

Comments:

Gum - Sawtimber International 1/4 Scale

Number of Logs									
DBH	1-Log	2-Log	3-Log	4-Log	5-Log	# Trees	Volume	% of Total	
16		1				1	0.2	100.0%	
Total		1				1	0.2		

Loblolly Pine - Sawtimber International 1/4 Scale

Number of Logs									
DBH	1-Log	2-Log	3-Log	4-Log	5-Log	# Trees	Volume	% of Total	
10	12	5				17	0.7	3.7%	
12	10	34	31			75	7.4	37.3%	
14	2	8	33			43	7.4	37.5%	
16	3	3	8			14	3.0	14.9%	
18			2			2	0.7	3.4%	
24			1			1	0.6	3.2%	
Total	27	50	75			152	19.8		

Poplar - Sawtimber International 1/4 Scale

Number of Logs									
DBH	1-Log	2-Log	3-Log	4-Log	5-Log	# Trees	Volume	% of Total	
14			1			1	0.2	20.6%	
16		1				1	0.2	21.0%	
22			1			1	0.5	58.4%	
Total		1	2			3	0.9		

White Oak - Sawtimber International 1/4 Scale

Number of Logs									
DBH	1-Log	2-Log	3-Log	4-Log	5-Log	# Trees	Volume	% of Total	
20	1		1			2	0.6	100.0%	
Total	1		1			2	0.6		

Sawtimber Volume by Timber Type

Timber Type	# Trees	Volume	Avg BF/Tree	% of Total
Hardwood	6	1.7	283.7	7.9%
Pine	152	19.8	130.5	92.1%
Total	158	21.5	136.3	

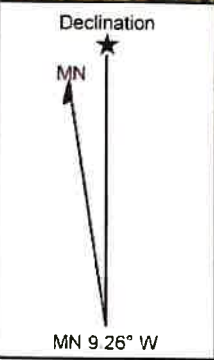
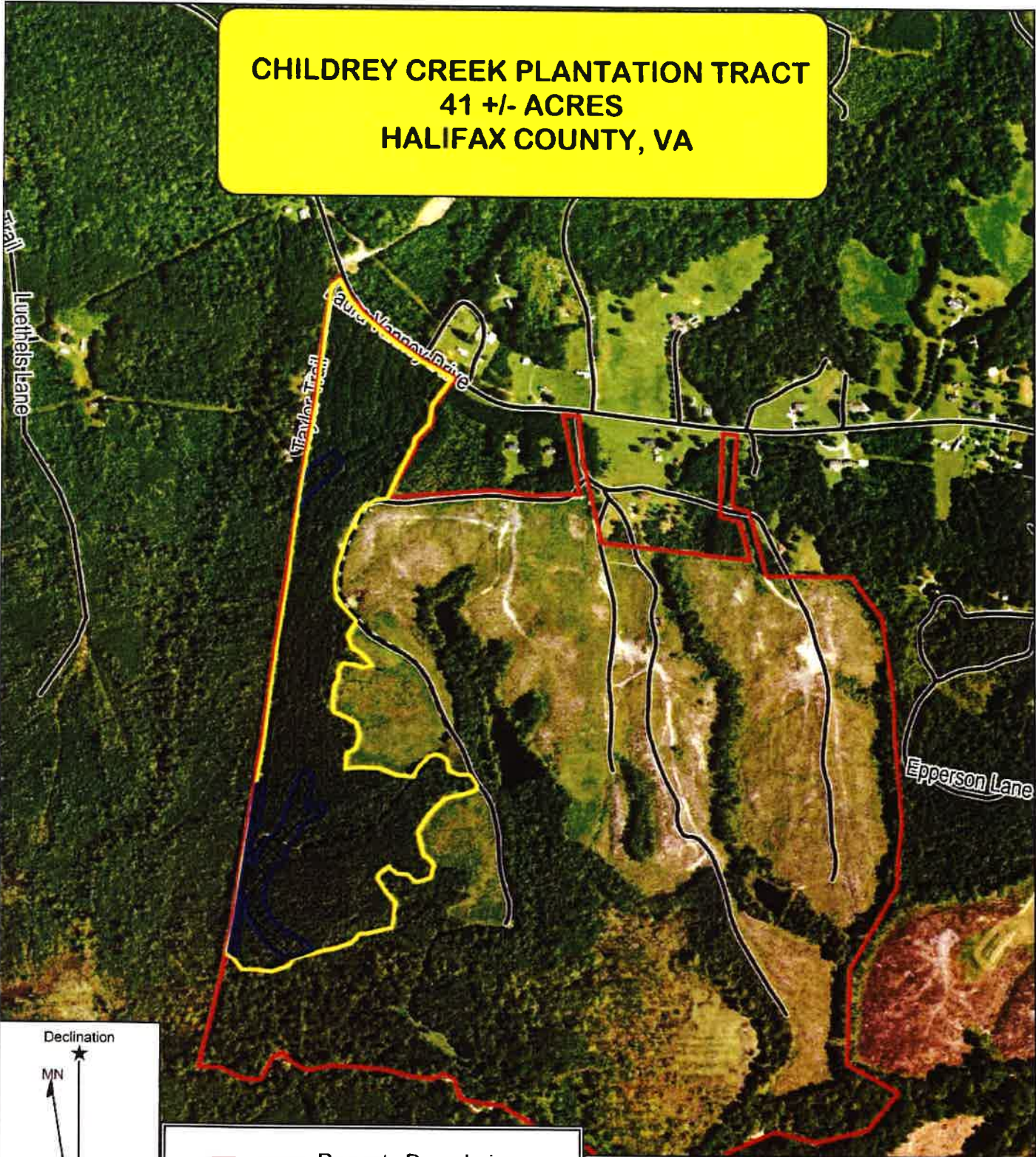
Sawtimber Volume by DBH

DBH	# Trees	Volume	Avg BF/Tree	% of Total
10	17	0.7	42.8	3.4%
12	75	7.4	98.8	34.4%
14	44	7.6	173.1	35.4%
16	16	3.3	208.4	15.5%
18	2	0.7	336.0	3.1%
20	2	0.6	304.0	2.8%
22	1	0.5	528.0	2.5%
24	1	0.6	644.0	3.0%
Total	158	21.5	136.3	

Sawtimber Volume by Species

Species	# Trees	Volume	Avg BF/Tree	% of Total
Gum	1	0.2	190.0	0.9%
Loblolly Pine	152	19.8	130.5	92.1%
Poplar	3	0.9	301.3	4.2%
White Oak	2	0.6	304.0	2.8%
Total	158	21.5	136.3	

**CHILDREY CREEK PLANTATION TRACT
41 +/- ACRES
HALIFAX COUNTY, VA**

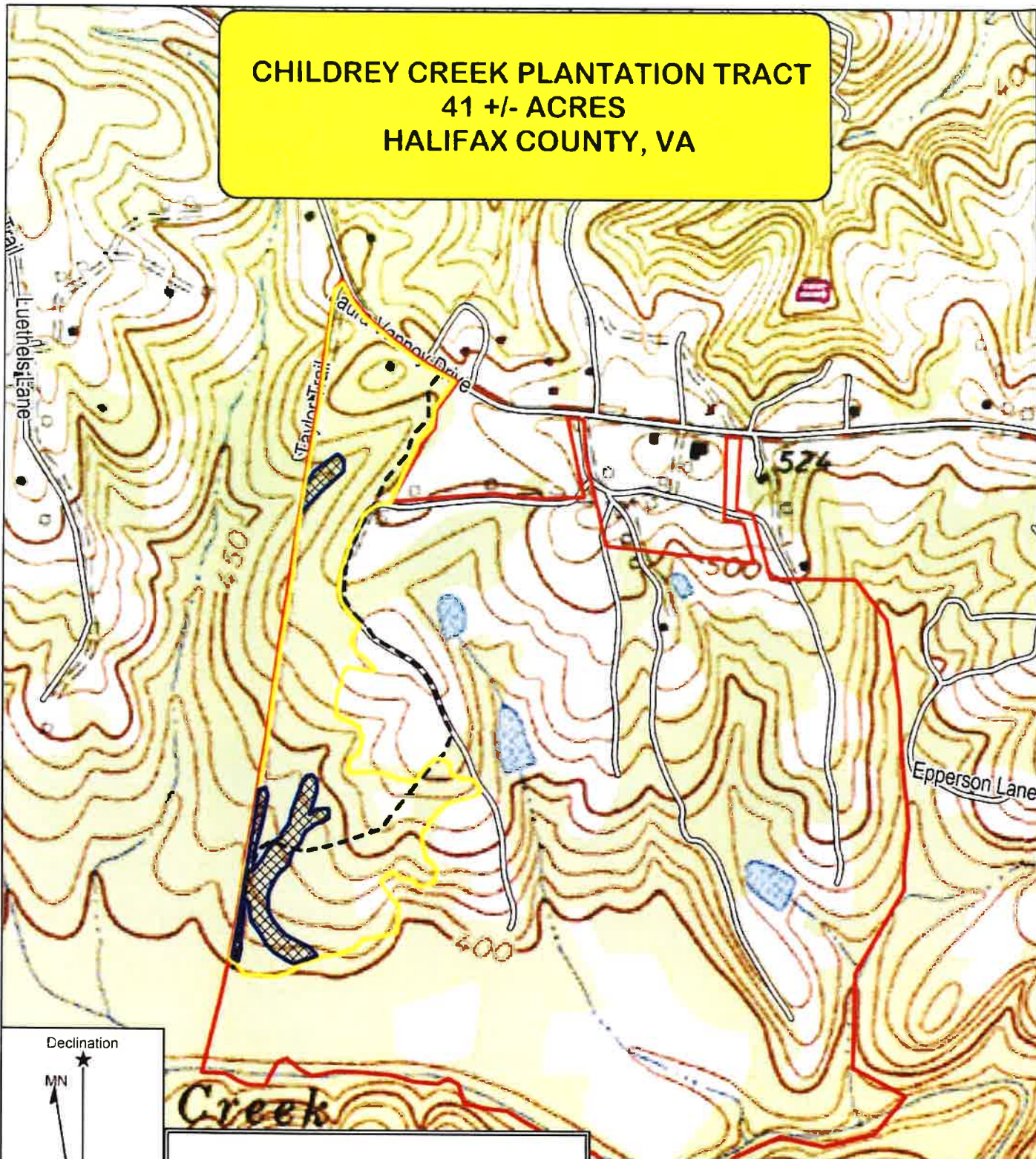


- Property Boundaries
- Harvest Boundaries
- Stream Buffers (SMZs)
- - - Existing Roads

TIMBER MARKETING & MANAGEMENT INC.
Professional Forestry Consultants
P.O. Box 396
Chesterfield, VA 23832
Ph (804) 796-9622
Fax (804) 796-9693
www.immva.com

<p>Name: Childrey Creek Plantation Tract Date: October 11, 2021 Scale: 1 inch = 660 ft.</p>	<p>Location: Halifax County, VA 37.11 Acres Clearcut 3.83 Acres SMZ</p>
---	---

**CHILDREY CREEK PLANTATION TRACT
41 +/- ACRES
HALIFAX COUNTY, VA**



Declination

MN

MN 9 26° W

- Property Boundaries
- Harvest Boundaries
- Stream Buffers (SMZs)
- - - - Existing Roads

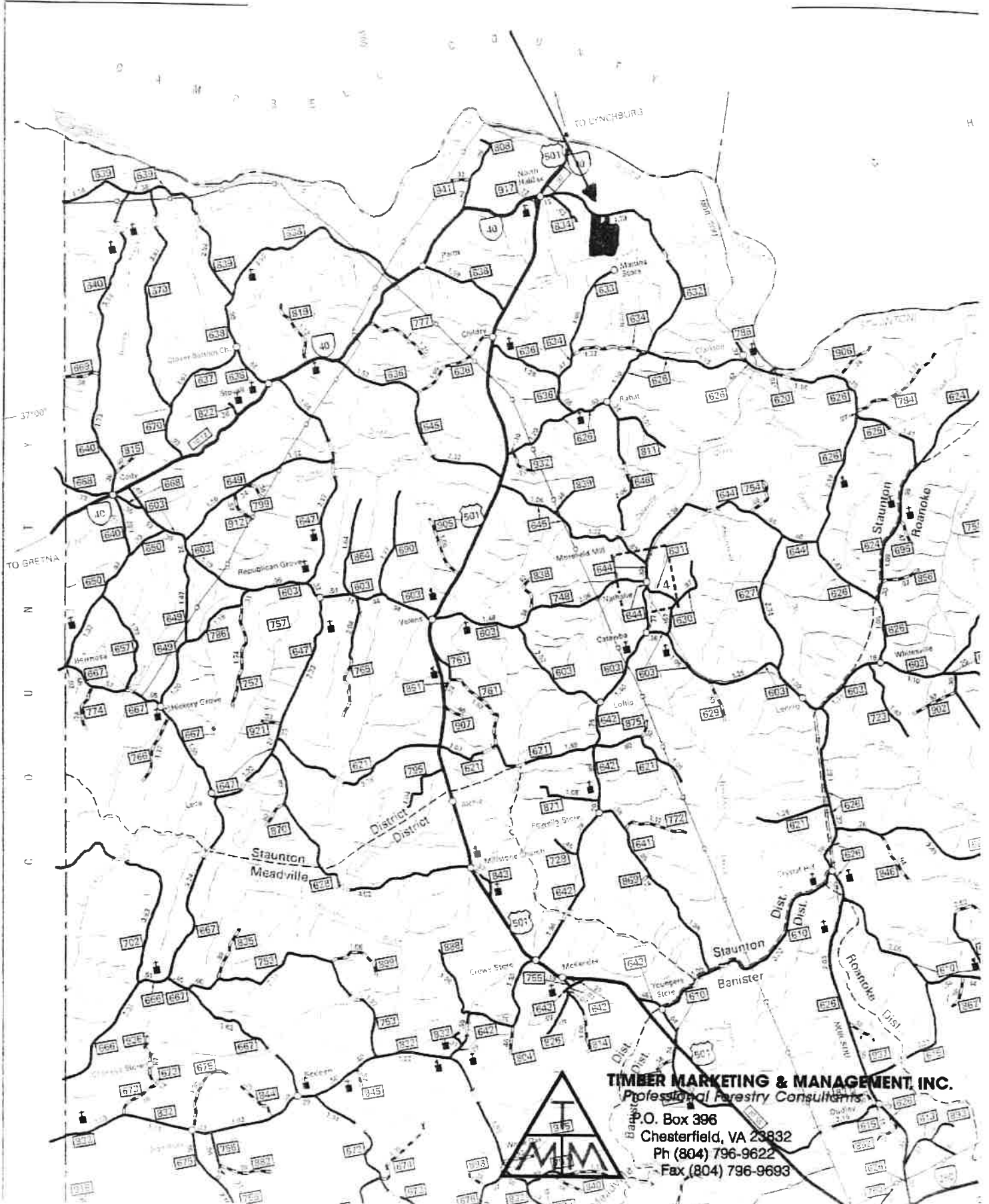


TIMBER MARKETING & MANAGEMENT INC.
Professional Forestry Consultants
P.O. Box 396
Chesterfield, VA 23632
Ph (804) 796-9622
Fax (804) 796-9693
www.tmmva.com

Name: Childrey Creek Plantation Tract
Date: October 11, 2021
Scale: 1 inch = 660 ft.

Location: Halifax County, VA
37.11 Acres Clearcut
3.83 Acres SMZ

CHILDREY CREEK PLANTATION TRACT HALIFAX COUNTY, VA



TIMBER MARKETING & MANAGEMENT, INC.
Professional Forestry Consultants
P.O. Box 396
Chesterfield, VA 23832
Ph (804) 796-9622
Fax (804) 796-9693

