

TIMBER MARKETING & MANAGEMENT INC.

Professional Forestry Consultants

P.O. Box 396

Chesterfield, VA 23832

Ph (804) 796-9622

Fax (804) 796-9693

www.tmmva.com

Sale Date:	May 28, 2021	May 28, 2021	May 28, 2021
Time:	11:00 a.m.	11:00 a.m.	11:00 a.m.
Day:	Thursday	Thursday	Thursday
BLOCK:	A	B	SMZ
Total Vol./Acre:	9,275 B.F.	4,670 B.F.	3,282 B.F.
LPine Vol/Tree:	110 B.F.	96 B.F.	189 B.F.
Hdwd. Vol/Tree:	102 B.F.	69 B.F.	343 B.F.

CLEAR CUT SALE

Having been employed by **Richard and Jeanne Emmerson** we solicit bids on the combination of all merchantable timber on **100 +/- acres** (Block A, Clear Cut) and on all merchantable timber on **29 +/- acres** (Block B, Clear Cut) and on blue marked timber only on **25 +/- acres** in the SMZ's and located in **Sussex County, Virginia** and as shown on the attached map.

We made an 8.6% plot cruise of the pulpwood trees to be harvested. Our estimate of their volume is:

	Block A	Block B	Total	Total
<u>Pulpwood</u>	<u>Cords</u>	<u>Cords</u>	<u>Cords</u>	<u>Tons</u>
Pine	494	241	735	1,911
Soft Hardwood	177	127	304	790
Hard Hardwood	<u>89</u>	<u>53</u>	<u>142</u>	<u>369</u>
Totals:	760	421	1,181	3,071

We have made a 100% count of the sawtimber-size trees to be harvested. Our estimate of their volume is:

<u>Sawtimber</u>	<u>BLOCK A</u>	<u>BLOCK B</u>	<u>SMZ</u>	<u>Total</u>
Loblolly Pine	902,600	126,700	71,100	1,100,400
Poplar	7,200	3,900	7,700	18,800
Gum	2,900	0	2,100	5,000
Maple	1,900	0	600	2,500
White Oak	0	2,000	600	2,600
Red Oak	<u>12,900</u>	<u>2,900</u>	<u>0</u>	<u>15,800</u>
Totals:	927,500	135,500	82,100	1,145,100 BF Int 1/4" Scale

The above volumes are not guaranteed; however, care was taken in the field to assemble the above tables. You should note how your utilization practices may vary from the above and make any necessary adjustments.

Conditions

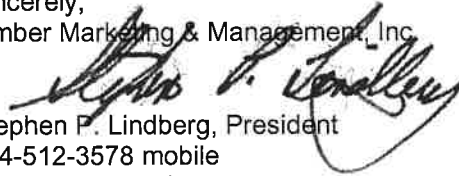
1. The landowner assumes responsibility for compliance with the Virginia State Seed Tree Law.
2. A period of time of 27 months will be allowed to cut and remove the timber.
3. Roads **must** be maintained and restored to their original condition upon completion of the logging. Any newly constructed roads and decks must be left in a graded condition and must be seeded upon completion of logging. Any newly constructed haul roads, skid roads and log decks and all logging operations must be in accordance with the guidelines set out in the **Best Management Practices Manual** of the Virginia Department of Forestry.
4. No tops or laps will be allowed to remain in the streams, fields, buffers or over cutting boundaries. They must be pulled back immediately.
5. Only the blue marked trees are to be cut from Streamside Management Zones.
6. No logging will be permitted during excessively wet weather conditions as determined by Timber Marketing & Management, Inc. If logging is halted due to weather conditions, then an extension of time equal to the time lost will be granted.
7. A \$3,000.00 performance bond will be paid at closing and held by Timber Marketing & Management, Inc. to insure compliance with all BMP requirements, road maintenance and conditions of the Timber Purchase Contract.

Only sealed bids will be accepted and owners reserve the right to reject any or all bids. BIDS SHOULD BE SUBMITTED PRIOR TO THE TIME OF BID OPENING AND CAN BE SUBMITTED VIA: Mail to: Timber Marketing & Management, Inc. P. O. Box 396, Chesterfield, Virginia 23832 **OR** hand delivered to 9520 Ironbridge Road, Chesterfield, Virginia **OR** telephoned in to 804-796-9622 **OR** faxed to 804-796-9693 **OR** emailed to tmm4u@aol.com Bids must be made on a lump-sum basis and must be received at this address no later than the posted bid date and time as shown on the cover. Closing shall take place within 30 days of bid acceptance.

There will be no scheduled show trip of the tract; however, you may call and set an appointment or you may inspect the property at your own leisure.

An electronic copy of this sale notice, including maps and volumes, is available for download and viewing on our website at www.tmmva.com under the Timber Sale Notices section.

Sincerely,
Timber Marketing & Management, Inc.



Stephen P. Lindberg, President
804-512-3578 mobile
804-796-9622 office

Emmerson, R. - Block A

Timber Marketing & Management, Inc.

Professional Forestry Consultants

P.O. Box 396

Chesterfield, VA 23832-0000

Phone: (804) 796-9622 • Fax: (804) 796-9693

Pulpwood Cruise: 8.6%

Sawtimber Cruise: 8.6%

Cruise Date: Monday, March 15, 2021

Owner's Name: Emmerson

County/State: Sussex County, VA

Acreage: 100+/-

Cruise Type: Plot Cruise

Harvest Type: Clear Cut

Total BF/Acre: 9,275

Pine Vol/Tree: 110.4

Hardwood Vol/Tree: 101.7

Volume Legend:

- 1) Diameters shown in inches (DBH)
- 2) Logs measured in 16' increments
- 3) Sawtimber volumes are shown in thousands of board feet (MBF)
- 4) Volume scale used for each species of sawtimber is noted
- 5) Pulpwood volumes are shown in standard cords (128 cubic feet)

Comments:

Pulpwood Standard Cord

DBH	Wood Classification							
	Pine		Soft Hardwood		Hard Hardwood		Cedar	
# Trees	Volume	# Trees	Volume	# Trees	Volume	# Trees	Volume	
6	698	31	1,070	42	767	30		
8	1,814	181	826	65	372	29		
10	1,547	257	477	63	186	25		
12	93	25	35	7	12	2		
14					12	3		
Total	4,151	494	2,407	177	1,349	89		

Gum - Sawtimber International 1/4 Scale

DBH	Number of Logs					# Trees	Volume	% of Total
	1-Log	2-Log	3-Log	4-Log	5-Log			
12	12					12	0.7	22.8%
16		12				12	2.2	77.2%
Total	12	12				23	2.9	

Loblolly Pine - Sawtimber International 1/4 Scale

DBH	Number of Logs					# Trees	Volume	% of Total
	1-Log	2-Log	3-Log	4-Log	5-Log			
10	814	1,547				2,360	120.5	13.4%
12	105	1,756	1,849			3,709	389.3	43.1%
14	12	465	1,291			1,767	306.6	34.0%
16		58	233			291	70.6	7.8%
18			47			47	15.6	1.7%
Total	930	3,826	3,419			8,174	902.6	

Maple - Sawtimber International 1/4 Scale

DBH	Number of Logs					# Trees	Volume	% of Total
	1-Log	2-Log	3-Log	4-Log	5-Log			
14	23					23	1.9	100.0%
Total	23					23	1.9	

Poplar - Sawtimber International 1/4 Scale

DBH	Number of Logs					# Trees	Volume	% of Total
	1-Log	2-Log	3-Log	4-Log	5-Log			
12	23					23	1.3	18.1%
14	12	35				47	5.9	81.9%
Total	35	35				70	7.2	

Red Oak - Sawtimber International 1/4 Scale

DBH	Number of Logs					# Trees	Volume	% of Total
	1-Log	2-Log	3-Log	4-Log	5-Log			
12	47					47	2.6	20.3%
14	47					47	3.9	30.0%
16	12	12				23	3.5	27.3%
18		12				12	2.9	22.4%
Total	105	23				128	12.9	

Sawtimber Volume by Timber Type

Timber Type	# Trees	Volume	Avg BF/Tree	% of Total
Hardwood	244	24.8	101.7	2.7%
Pine	8,174	902.6	110.4	97.3%
Total	8,419	927.5	110.2	

Sawtimber Volume by DBH

DBH	# Trees	Volume	Avg BF/Tree	% of Total
10	2,360	120.5	51.1	13.0%
12	3,791	393.8	103.9	42.5%
14	1,884	318.3	169.0	34.3%
16	326	76.3	234.4	8.2%
18	58	18.5	318.4	2.0%
Total	8,419	927.5	110.2	

Sawtimber Volume by Species

Species	# Trees	Volume	Avg BF/Tree	% of Total
Gum	23	2.9	123.0	0.3%
Loblolly Pine	8,174	902.6	110.4	97.3%
Maple	23	1.9	83.0	0.2%
Poplar	70	7.2	103.0	0.8%
Red Oak	128	12.9	100.5	1.4%
Total	8,419	927.5	110.2	

Emmerson, R. - Block B

Timber Marketing & Management, Inc.

Professional Forestry Consultants

P.O. Box 396

Chesterfield, VA 23832-0000

Phone: (804) 796-9622 • Fax: (804) 796-9693

Pulpwood Cruise: 8.6%

Sawtimber Cruise: 8.6%

Cruise Date: Monday, March 15, 2021

Owner's Name: Emmerson

County/State: Sussex County, VA

Acreage: 29+/-

Cruise Type: Plot Cruise

Harvest Type: Clear Cut

Total BF/Acre: 4,670

Pine Vol/Tree: 96.4

Hardwood Vol/Tree: 68.6

Volume Legend:

- 1) Diameters shown in inches (DBH)
- 2) Logs measured in 16' increments
- 3) Sawtimber volumes are shown in thousands of board feet (MBF)
- 4) Volume scale used for each species of sawtimber is noted
- 5) Pulpwood volumes are shown in standard cords (128 cubic feet)

Comments:

Pulpwood

Standard Cord

Wood Classification

DBH	Pine		Soft Hardwood		Hard Hardwood		Cedar	
	# Trees	Volume	# Trees	Volume	# Trees	Volume	# Trees	Volume
6	698	31	721	28	477	19		
8	1,209	121	616	49	279	22		
10	442	73	256	34	58	8		
12	58	15	81	16	23	5		
Total	2,407	241	1,674	127	837	53		

Loblolly Pine - Sawtimber

International 1/4 Scale

Number of Logs

DBH	1-Log	2-Log	3-Log	4-Log	5-Log	# Trees	Volume	% of Total
10	244	81				326	13.6	10.7%
12	116	384	140			640	58.6	46.2%
14		233	93			326	50.1	39.5%
16		23				23	4.4	3.5%
Total	360	721	233			1,314	126.7	

Poplar - Sawtimber

International 1/4 Scale

Number of Logs

DBH	1-Log	2-Log	3-Log	4-Log	5-Log	# Trees	Volume	% of Total
12	70					70	3.9	100.0%
Total	70					70	3.9	

Red Oak - Sawtimber

International 1/4 Scale

Number of Logs

DBH	1-Log	2-Log	3-Log	4-Log	5-Log	# Trees	Volume	% of Total
12	12					12	0.7	22.3%
14	12					12	1.0	33.1%
16	12					12	1.3	44.6%
Total	35					35	2.9	

White Oak - Sawtimber

International 1/4 Scale

Number of Logs

DBH	1-Log	2-Log	3-Log	4-Log	5-Log	# Trees	Volume	% of Total
12	12					12	0.7	33.3%
16	12					12	1.3	66.7%
Total	23					23	2.0	

Sawtimber Volume by Timber Type

Timber Type	# Trees	Volume	Avg BF/Tree	% of Total
Hardwood	128	8.8	68.6	6.5%
Pine	1,314	126.7	96.4	93.5%
Total	1,442	135.4	93.9	

Sawtimber Volume by DBH

DBH	# Trees	Volume	Avg BF/Tree	% of Total
10	326	13.6	41.8	10.0%
12	733	63.8	87.0	47.1%
14	337	51.1	151.4	37.7%
16	47	7.0	151.0	5.2%
Total	1,442	135.4	93.9	

Sawtimber Volume by Species

Species	# Trees	Volume	Avg BF/Tree	% of Total
Loblolly Pine	1,314	126.7	96.4	93.5%
Poplar	70	3.9	56.0	2.9%
Red Oak	35	2.9	83.7	2.2%
White Oak	23	2.0	84.0	1.4%
Total	1,442	135.4	93.9	

Emmerson, R. - SMZ's

Timber Marketing & Management, Inc.

Professional Forestry Consultants

P.O. Box 396

Chesterfield, VA 23832-0000

Phone: (804) 796-9622 • Fax: (804) 796-9693

Sawtimber Cruise: 100.0%

Cruise Date: Monday, April 12, 2021
 Owner's Name: Emmerson
 County/State: Sussex County, VA
 Acreage: 25+/-
 Cruise Type: Tree Count
 Harvest Type: Select Cut
 Total BF/Acre: 3,282
 Pine Vol/Tree: 189.0
 Hardwood Vol/Tree: 343.1

Volume Legend:

- 1) Diameters shown in inches (DBH)
- 2) Logs measured in 16' increments
- 3) Sawtimber volumes are shown in thousands of board feet (MBF)
- 4) Volume scale used for each species of sawtimber is noted
- 5) Pulpwood volumes are shown in standard cords (128 cubic feet)

Comments:

Gum - Sawtimber

International 1/4 Scale

Number of Logs								
DBH	1-Log	2-Log	3-Log	4-Log	5-Log	# Trees	Volume	% of Total
18		1	3			4	1.3	59.5%
20			2			2	0.9	40.5%
Total		1	5			6	2.1	

Loblolly Pine - Sawtimber

International 1/4 Scale

Number of Logs								
DBH	1-Log	2-Log	3-Log	4-Log	5-Log	# Trees	Volume	% of Total
10	4	4				8	0.4	0.5%
12	5	34	49			88	9.3	13.1%
14	2	51	86			139	23.4	32.9%
16		23	69			92	22.0	31.0%
18	2	13	24			39	11.6	16.3%
20		2	5			7	2.8	3.9%
22		1				1	0.4	0.5%
24			2			2	1.3	1.8%
Total	13	128	235			376	71.1	

Maple - Sawtimber

International 1/4 Scale

Number of Logs								
DBH	1-Log	2-Log	3-Log	4-Log	5-Log	# Trees	Volume	% of Total
16		2				2	0.4	60.5%
18		1				1	0.2	39.5%
Total		3				3	0.6	

Poplar - Sawtimber

International 1/4 Scale

Number of Logs								
DBH	1-Log	2-Log	3-Log	4-Log	5-Log	# Trees	Volume	% of Total
16		4	2			6	1.3	16.6%
18		5	5			10	2.9	38.0%
22			1			1	0.5	6.9%
24			2			2	1.3	16.8%
26			1			1	0.8	10.0%
28			1			1	0.9	11.8%
Total		9	12			21	7.7	

White Oak - Sawtimber

International 1/4 Scale

Number of Logs								
DBH	1-Log	2-Log	3-Log	4-Log	5-Log	# Trees	Volume	% of Total
18		1				1	0.2	44.1%
20			1			1	0.3	55.9%
Total		2				2	0.6	

Sawtimber Volume by Timber Type

Timber Type	# Trees	Volume	Avg BF/Tree	% of Total
Hardwood	32	11.0	343.1	13.4%
Pine	376	71.1	189.0	86.6%
Total	408	82.0	201.1	

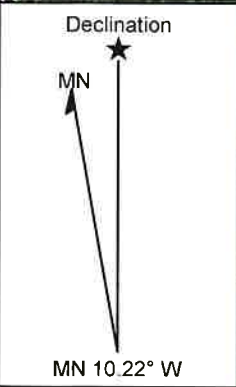
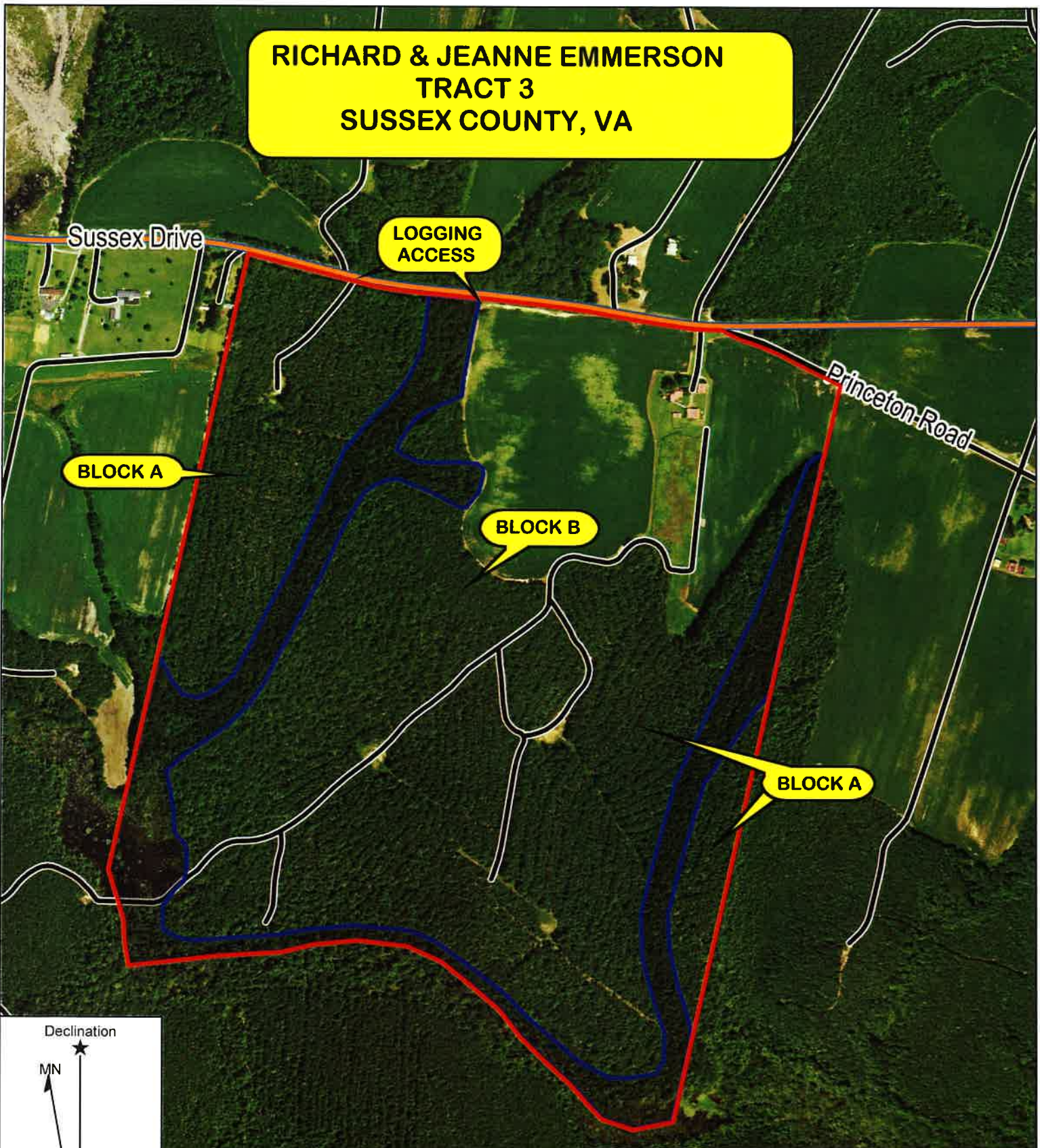
Sawtimber Volume by DBH

DBH	# Trees	Volume	Avg BF/Tree	% of Total
10	8	0.4	47.5	0.5%
12	88	9.3	105.5	11.3%
14	139	23.4	168.0	28.5%
16	100	23.7	236.9	28.9%
18	55	16.2	295.4	19.8%
20	10	3.9	393.1	4.8%
22	2	0.9	457.5	1.1%
24	4	2.6	644.0	3.1%
26	1	0.8	767.0	0.9%
28	1	0.9	904.0	1.1%
Total	408	82.0	201.1	

Sawtimber Volume by Species

Species	# Trees	Volume	Avg BF/Tree	% of Total
Gum	6	2.1	351.7	2.6%
Loblolly Pine	376	71.1	189.0	86.6%
Maple	3	0.6	209.3	0.8%
Poplar	21	7.7	365.7	9.4%
White Oak	2	0.6	281.0	0.7%
Total	408	82.0	201.1	

**RICHARD & JEANNE EMMERSON
TRACT 3
SUSSEX COUNTY, VA**

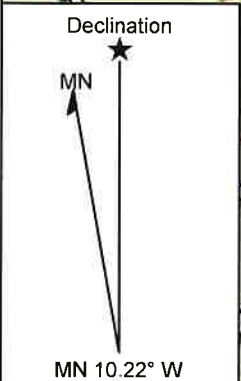
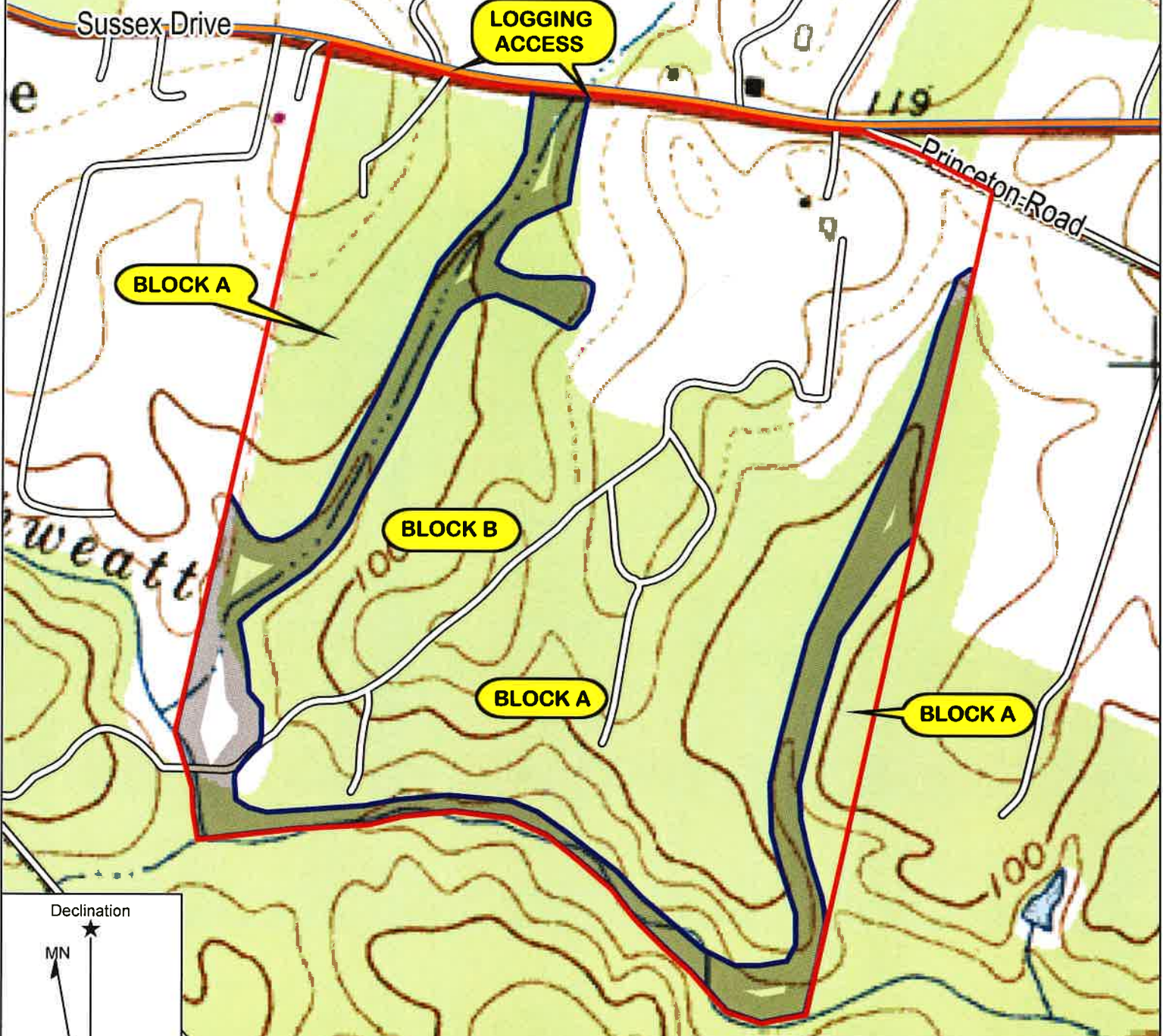


TIMBER MARKETING & MANAGEMENT INC.
Professional Forestry Consultants
P.O. Box 396
Chesterfield, VA 23832
Ph (804) 796-9622
Fax (804) 796-9693
www.tmmva.com

Name: Richard & Jeanne Emmerson
Date: 04/29/21
Scale: 1 inch = 600 ft.

Location: Sussex County, VA

**RICHARD & JEANNE EMMERSON
TRACT 3
SUSSEX COUNTY, VA**

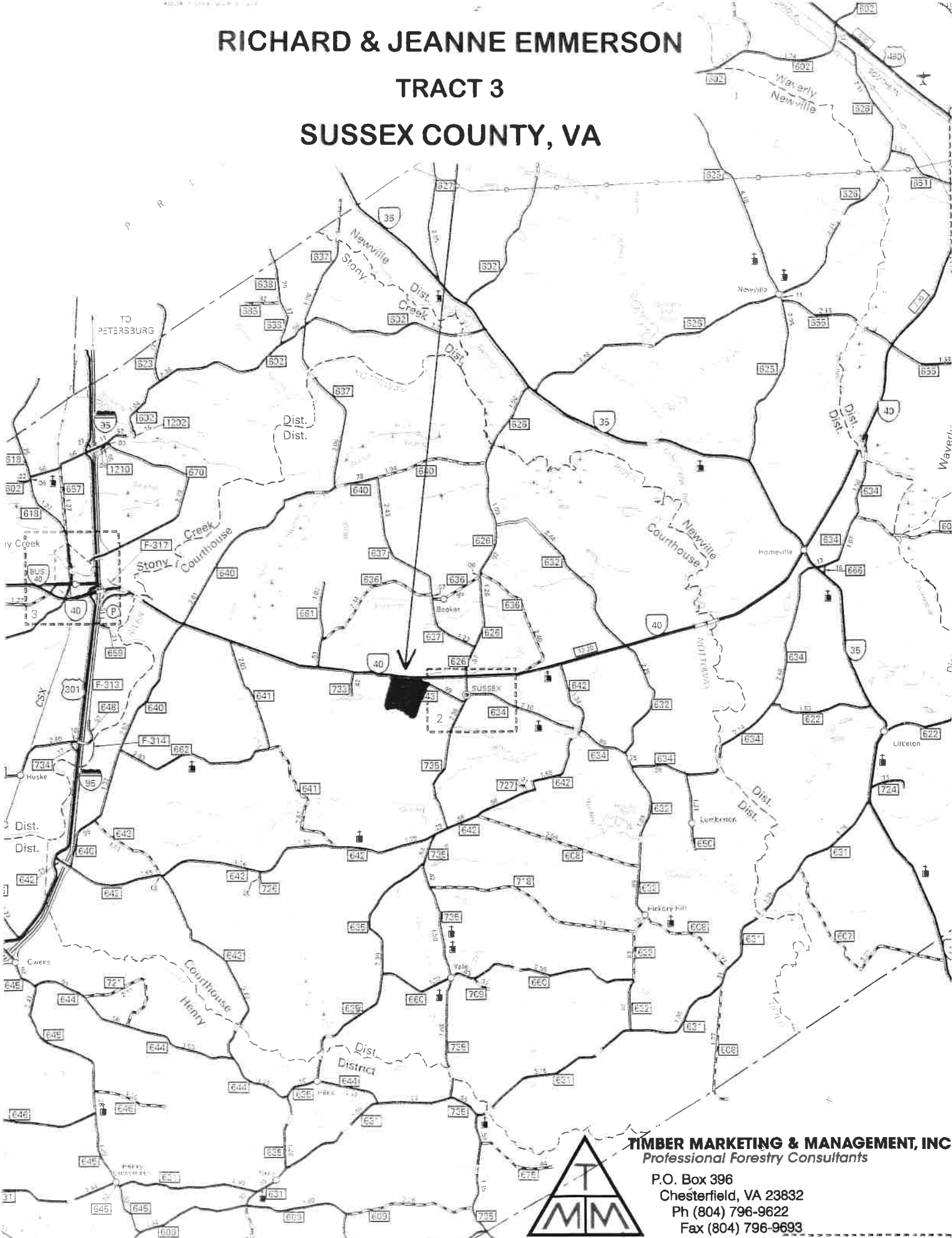


TIMBER MARKETING & MANAGEMENT INC.
Professional Forestry Consultants
P.O. Box 396
Chesterfield, VA 23832
Ph (804) 796-9622
Fax (804) 796-9693
www.tmmva.com

Name: Richard & Jeanne Emmerson, Tract 3
Date: 04/29/21
Scale: 1 inch = 600 ft.

Location: Sussex County, VA

RICHARD & JEANNE EMMERSON
TRACT 3
SUSSEX COUNTY, VA



TIMBER MARKETING & MANAGEMENT, INC
Professional Forestry Consultants
P.O. Box 396
Chesterfield, VA 23832
Ph (804) 796-9622
Fax (804) 796-9693