

**TIMBER MARKETING & MANAGEMENT INC.**

*Professional Forestry Consultants*

P.O. Box 396

Chesterfield, VA 23832

Ph (804) 796-9622

Fax (804) 796-9693

www.tmmva.com

Sale Date:	<b>September 20, 2018</b>
Time:	11:00 a.m.
Day:	Thursday
Total Vol./Acre:	3,869 B. F.
Pine Vol/Tree:	171 B. F.
Hdwd. Vol/Tree:	527 B. F.

**SELECT CUT SALE**

Having been employed by **Carol D. Farley Trustee** we solicit bids on all blue marked timber to be selectively harvested on 78 +/- acres of Hardens Farm in Charles City County, Virginia and as shown on the attached map. We have made a 100% count of the sawtimber-size trees. Our estimate of their volume is:

**SAWTIMBER**

**Sawtimber**

White Oak	172,400	Gum	4,500
Poplar	55,900	Hickory	3,900
Cherrybark Oak	26,500	Ash	3,200
Red Oak	13,200	Cypress	2,500
Northern Red Oak	10,700	Willow Oak	<u>1,000</u>
Lobolly Pine	5,300		
			<b>299,100 Total B.F. Int 1/4" Scale</b>

The above volumes are not guaranteed; however, care was taken in the field to assemble the above tables. You should note how your utilization practices may vary from the above and make any necessary adjustments.

**VENEER**

Included in the volumes are high quality trees that, from our review, will be of high enough quality that a veneer cut can be obtained. The veneer volume is estimated to be:

<b>Cherrybark Oak</b>	<b>924 BF Doyle Scale</b>
<b>Northern Red Oak</b>	<b>169 BF Doyle Scale</b>
<b>White Oak</b>	<b>6,673 BF Doyle Scale</b>

We have enclosed a detailed analysis of the veneer logs for your review. Please note that the veneer volumes are an aid and you should review the trees and make your own adjustments as you see necessary. The veneer trees have been individually numbered and painted with a ring of red paint around the entire tree.

**CONDITIONS**

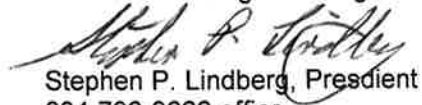
1. Blue marked timber only can be harvested from the sale area.
2. A period of time of 24 months will be allowed to cut and remove the timber.
3. Roads **must** be maintained and restored to their original condition upon completion of the logging. Any newly constructed roads and decks must be left in a graded condition and must be seeded upon completion of logging. Any newly constructed haul roads, skid roads and log decks and all logging operations must be in accordance with the guidelines set out in the **Best Management Practices Manual** of the Virginia Department of Forestry.
4. No tops or laps will be allowed to remain in the streams, fields, buffers or over cutting boundaries. They must be pulled back immediately.
5. Damages will be assessed for cutting or excessively scarring unmarked trees. Trees must be topped and limbed before skidding in the select cut area.
6. No logging will be permitted during excessively wet weather conditions as determined by Timber Marketing & Management, Inc. If logging is halted due to weather conditions, then an extension of time equal to the time lost will be granted.
7. A \$2,500.00 performance bond will be paid at closing and held by Timber Marketing & Management, Inc. to insure compliance with all BMP requirements, road maintenance and conditions of the Timber Purchase Contract.

8. Logging access is shown on the attached map.
9. Any loading decks must be located at least 150' from the gate at the entrance.
10. Landowner retains the right to 2 maple trees and 1 sycamore tree, and which are marked.

Only sealed bids will be accepted and owners reserve the right to reject any or all bids. BIDS SHOULD BE SUBMITTED PRIOR TO THE TIME OF BID OPENING AND CAN BE SUBMITTED VIA: Mail to: Timber Marketing & Management, Inc. P. O. Box 396, Chesterfield, Virginia 23832 **OR** hand delivered to 9520 Ironbridge Road, Chesterfield, Virginia **OR** telephoned in to 804-796-9622 **OR** faxed to 804-796-9693 **OR** emailed to [tmm4u@aol.com](mailto:tmm4u@aol.com) Bids must be made on a lump-sum basis and must be received at this address no later than the posted bid date and time as shown on the cover of this sale notice.

There will not be any scheduled show trip of the tract; however, you may call and set an appointment or you may inspect the property at your own leisure.

Sincerely,  
Timber Marketing & Management, Inc.

  
Stephen P. Lindberg, President  
804-796-9622 office  
804-512-3578 mobile

## Hardens Farm

### Timber Marketing & Management, Inc.

Professional Forestry Consultants

P.O. Box 396

Chesterfield, VA 23832-0000

Phone: (804) 796-9622 • Fax: (804) 796-9693

Sawtimber Cruise: 100.0%

Veneer Cruise: 100.0%

Cruise Date: Wednesday, July 11, 2018

Owner's Name: Carol Farley et als

County/State: Charles City County, VA

Acreage: 78+/-

Cruise Type: Tree Count

Harvest Type: Clear Cut

Total BF/Acre: 3,836

Pine Vol/Tree: 170.9

Hardwood Vol/Tree: 524.8

#### Volume Legend:

- 1) Diameters shown in inches (DBH)
- 2) Logs measured in 16' increments
- 3) Sawtimber volumes are shown in thousands of board feet (MBF)
- 4) Volume scale used for each species of sawtimber is noted
- 5) Pulpwood volumes are shown in standard cords (128 cubic feet)

#### Comments:

#### Ash - Sawtimber

International 1/4 Scale

DBH	Number of Logs					# Trees	Volume	% of Total
	1-Log	2-Log	3-Log	4-Log	5-Log			
12	1					1	0.1	1.7%
14	3					3	0.2	7.8%
16	2					2	0.2	7.0%
18	3	2	3			8	1.9	60.4%
20		1	1			2	0.7	23.1%
<b>Total</b>	<b>9</b>	<b>3</b>	<b>4</b>			<b>16</b>	<b>3.2</b>	

#### Cherrybark Oak - Sawtimber

International 1/4 Scale

DBH	Number of Logs					# Trees	Volume	% of Total
	1-Log	2-Log	3-Log	4-Log	5-Log			
18			2			2	0.7	2.5%
20		2	3	1		6	2.4	9.1%
22		1	4	2		7	3.8	14.2%
24		3	3	1		7	4.1	15.5%
26		2	2			4	2.7	10.0%
28		2	7			9	7.6	28.8%
30			2			2	2.1	7.9%
36			2			2	3.1	11.9%
<b>Total</b>		<b>10</b>	<b>25</b>	<b>4</b>		<b>39</b>	<b>26.5</b>	

#### Cypress - Sawtimber

International 1/4 Scale

DBH	Number of Logs					# Trees	Volume	% of Total
	1-Log	2-Log	3-Log	4-Log	5-Log			
26			1			1	0.8	30.2%
38			1			1	1.8	69.8%
<b>Total</b>			<b>2</b>			<b>2</b>	<b>2.5</b>	

#### Gum - Sawtimber

International 1/4 Scale

DBH	Number of Logs					# Trees	Volume	% of Total
	1-Log	2-Log	3-Log	4-Log	5-Log			
18				1		1	0.4	8.9%
20		1	4	1		6	2.5	56.4%
22		1	1			2	0.9	20.4%
24			1			1	0.6	14.3%
<b>Total</b>		<b>2</b>	<b>6</b>	<b>2</b>		<b>10</b>	<b>4.5</b>	

#### Hickory - Sawtimber

International 1/4 Scale

DBH	Number of Logs					# Trees	Volume	% of Total
	1-Log	2-Log	3-Log	4-Log	5-Log			
20	1	2		1		4	1.3	33.8%
22			1			1	0.5	13.5%
24			2			2	1.3	33.0%
26			1			1	0.8	19.6%
<b>Total</b>	<b>1</b>	<b>2</b>	<b>4</b>	<b>1</b>		<b>8</b>	<b>3.9</b>	

#### Loblolly Pine - Sawtimber

International 1/4 Scale

DBH	Number of Logs					# Trees	Volume	% of Total
	1-Log	2-Log	3-Log	4-Log	5-Log			
10	4	1				5	0.2	3.8%
12	1	4	2			7	0.7	12.5%
14	1	2	3	3		9	1.6	29.7%
16			4	3		7	1.9	36.6%
18		1	2			3	0.9	17.4%
<b>Total</b>	<b>6</b>	<b>8</b>	<b>11</b>	<b>6</b>		<b>31</b>	<b>5.3</b>	

#### Northern Red Oak - Sawtimber

International 1/4 Scale

DBH	Number of Logs					# Trees	Volume	% of Total
	1-Log	2-Log	3-Log	4-Log	5-Log			
18		1				1	0.2	2.3%
20		1	2			3	1.2	10.9%
22		7				7	2.7	25.2%
24		1	7			8	5.0	46.3%
26			1			1	0.8	7.1%
32		1				1	0.9	8.1%
<b>Total</b>		<b>11</b>	<b>10</b>			<b>21</b>	<b>10.7</b>	

## Hardens Farm

### Timber Marketing & Management, Inc.

Cruise Date: Wednesday, July 11, 2018  
 Owner's Name: Carol Farley et als  
 County/State: Charles City County, VA

#### Poplar - Sawtimber International 1/4 Scale

DBH	Number of Logs					# Trees	Volume	% of Total
	1-Log	2-Log	3-Log	4-Log	5-Log			
16	1	1	1			3	0.6	1.0%
18		2	11	3		16	5.4	9.7%
20		6	24	20		50	22.4	40.0%
22		3	9	5		17	9.1	16.3%
24		2	7	1		10	6.2	11.1%
26		1	3	4		8	6.6	11.8%
30			3	1		4	4.4	7.9%
32			1			1	1.2	2.2%
<b>Total</b>	<b>1</b>	<b>15</b>	<b>59</b>	<b>34</b>		<b>109</b>	<b>55.9</b>	

#### Red Oak - Sawtimber International 1/4 Scale

DBH	Number of Logs					# Trees	Volume	% of Total
	1-Log	2-Log	3-Log	4-Log	5-Log			
18		1				1	0.2	1.9%
20		3	2			5	1.8	13.7%
22		3	2			5	2.2	16.9%
24		1	1			2	1.1	8.5%
26		1	1			2	1.3	10.1%
28		3				3	2.0	14.9%
30		1				1	0.8	5.8%
32		1		1		2	2.4	17.9%
34			1			1	1.4	10.5%
<b>Total</b>		<b>14</b>	<b>7</b>	<b>1</b>		<b>22</b>	<b>13.2</b>	

#### White Oak - Sawtimber International 1/4 Scale

DBH	Number of Logs					# Trees	Volume	% of Total
	1-Log	2-Log	3-Log	4-Log	5-Log			
16	1					1	0.1	0.1%
18		6	7			13	3.8	2.2%
20		51	44	5		100	37.4	21.7%
22		36	54	8		98	47.5	27.6%
24		20	26	4		50	29.2	16.9%
26		11	22			33	23.0	13.3%
28		8	13			21	17.0	9.8%
30		2	8			10	9.9	5.8%
32			1			1	1.2	0.7%
34		2				2	2.0	1.1%
38		1				1	1.3	0.7%
<b>Total</b>	<b>1</b>	<b>137</b>	<b>175</b>	<b>17</b>		<b>330</b>	<b>172.4</b>	

#### Willow Oak - Sawtimber International 1/4 Scale

DBH	Number of Logs					# Trees	Volume	% of Total
	1-Log	2-Log	3-Log	4-Log	5-Log			
18			1			1	0.3	32.4%
20		1				1	0.3	30.3%
22		1				1	0.4	37.3%
<b>Total</b>		<b>2</b>	<b>1</b>			<b>3</b>	<b>1.0</b>	

#### Sawtimber Volume by Timber Type

Timber Type	# Trees	Volume	Avg BF/Tree	% of Total
Hardwood	560	293.9	524.8	98.2%
Pine	31	5.3	170.9	1.8%
<b>Total</b>	<b>591</b>	<b>299.2</b>	<b>506.2</b>	

#### Sawtimber Volume by DBH

DBH	# Trees	Volume	Avg BF/Tree	% of Total
10	5	0.2	40.6	0.1%
12	8	0.7	90.0	0.2%
14	12	1.8	151.7	0.6%
16	13	2.8	217.9	0.9%
18	46	14.0	304.3	4.7%
20	177	70.0	395.6	23.4%
22	138	67.2	486.8	22.5%
24	80	47.6	594.6	15.9%
26	50	35.9	717.4	12.0%
28	33	26.6	805.5	8.9%
30	17	17.2	1,011.5	5.7%
32	5	5.6	1,129.2	1.9%
34	3	3.4	1,120.3	1.1%
36	2	3.1	1,571.0	1.1%
38	2	3.0	1,514.0	1.0%
<b>Total</b>	<b>591</b>	<b>299.2</b>	<b>506.2</b>	

#### Sawtimber Volume by Species

Species	# Trees	Volume	Avg BF/Tree	% of Total
Ash	16	3.2	200.4	1.1%
Cherrybark Oak	39	26.5	679.7	8.9%
Cypress	2	2.5	1,269.5	0.8%
Gum	10	4.5	449.5	1.5%
Hickory	8	3.9	488.0	1.3%
Loblolly Pine	31	5.3	170.9	1.8%
Northern Red Oak	21	10.7	511.4	3.6%
Poplar	109	55.9	512.6	18.7%
Red Oak	22	13.2	597.8	4.4%
White Oak	330	172.4	522.5	57.6%
Willow Oak	3	1.0	345.7	0.3%
<b>Total</b>	<b>591</b>	<b>299.2</b>	<b>506.2</b>	

## Hardens Farm

### Timber Marketing & Management, Inc.

Cruise Date: Wednesday, July 11, 2018  
 Owner's Name: Carol Farley et als  
 County/State: Charles City County, VA

#### Cherrybark Oak - Veneer Doyle (Butt Log Scale)

Butt Log Length												
DBH	8'	10'	12'	14'	16'	18'	20'	22'	24'	# Logs	Volume	% of Total
22	1									1	122	13.2%
24					1					1	231	25.0%
28	1				1					2	571	61.8%
<b>Total</b>	<b>2</b>				<b>2</b>					<b>4</b>	<b>924</b>	

#### Northern Red Oak - Veneer Doyle (Butt Log Scale)

Butt Log Length												
DBH	8'	10'	12'	14'	16'	18'	20'	22'	24'	# Logs	Volume	% of Total
24	1									1	160	100.0%
<b>Total</b>	<b>1</b>									<b>1</b>	<b>160</b>	

#### White Oak - Veneer Doyle (Butt Log Scale)

Butt Log Length												
DBH	8'	10'	12'	14'	16'	18'	20'	22'	24'	# Logs	Volume	% of Total
18	1									1	58	0.9%
20	1	6	5		1					13	1,343	20.1%
22	2	5	5		2					14	1,840	27.6%
24	1	2	3							6	976	14.6%
26		1	4		1					6	1,375	20.6%
28	1	1	1							3	681	10.2%
30					1					1	400	6.0%
<b>Total</b>	<b>5</b>	<b>16</b>	<b>18</b>		<b>5</b>					<b>44</b>	<b>6,673</b>	

#### Veneer Tag List

Tag	Species	DBH	Butt Log Length
A1	White Oak	24	12'
A10	White Oak	22	10'
A11	White Oak	20	12'
A12	White Oak	20	16'
A13	White Oak	22	16'
A2	Cherrybark Oak	28	16'
A3	White Oak	20	12'
A4	White Oak	26	16'
A5	White Oak	20	10'
A6	White Oak	22	12'
A7	White Oak	22	16'
A8	White Oak	22	8'
A9	White Oak	22	10'
G1	Cherrybark Oak	28	10'
G10	White Oak	24	10'
G11	White Oak	22	12'
G12	White Oak	22	12'
G13	White Oak	22	12'
G2	White Oak	30	16'
G3	White Oak	22	10'
G4	Cherrybark Oak	24	16'

G5	White Oak	22	8'
G6	White Oak	20	12'
G7	White Oak	28	10'
G8	White Oak	26	12'
G9	White Oak	20	12'
L1	White Oak	20	10'
L2	White Oak	20	8'
L3	White Oak	22	10'
L4	White Oak	24	12'
M1	White Oak	26	12'
M10	White Oak	28	8'
M11	White Oak	26	12'
M12	Cherrybark Oak	22	10'
M2	White Oak	24	10'
M3	White Oak	24	8'
M4	White Oak	22	10'
M5	White Oak	20	10'
M6	White Oak	20	10'
M7	White Oak	20	12'
M8	White Oak	24	12'
M9	White Oak	20	10'
S1	White Oak	26	10'
S2	White Oak	22	12'
S3	Northern Red Oak	24	10'
S4	White Oak	20	10'
S5	White Oak	26	12'
S6	White Oak	18	10'
S7	White Oak	28	12'

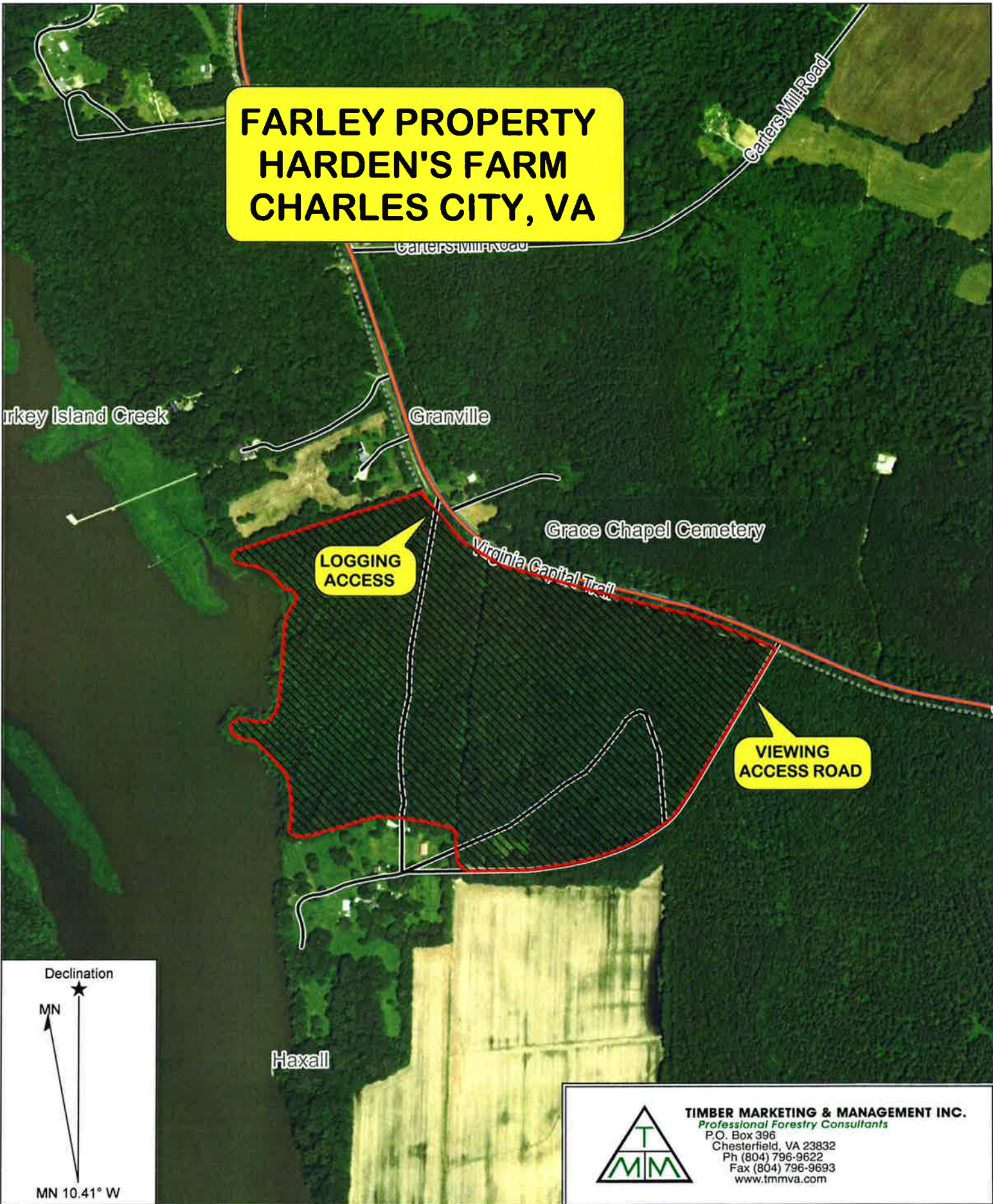
#### Veneer Volume by DBH

DBH	# Trees	Volume	Avg BF/Log	% of Total
18	1	58	58.0	0.7%
20	13	1,343	103.3	17.3%
22	15	1,962	130.8	25.3%
24	8	1,367	170.9	17.6%
26	6	1,375	229.2	17.7%
28	5	1,252	250.4	16.1%
30	1	400	400.0	5.2%
<b>Total</b>	<b>49</b>	<b>7,757</b>	<b>158.3</b>	

#### Veneer Volume by Species

Species	# Trees	Volume	Avg BF/Log	% of Total
Cherrybark Oak	4	924	231.0	11.9%
Northern Red Oak	1	160	160.0	2.1%
White Oak	44	6,673	151.7	86.0%
<b>Total</b>	<b>49</b>	<b>7,757</b>	<b>158.3</b>	

# FARLEY PROPERTY HARDEN'S FARM CHARLES CITY, VA



**TIMBER MARKETING & MANAGEMENT INC.**  
*Professional Forestry Consultants*  
P.O. Box 396  
Chesterfield, VA 23832  
Ph (804) 796-9622  
Fax (804) 796-9693  
[www.tmmva.com](http://www.tmmva.com)

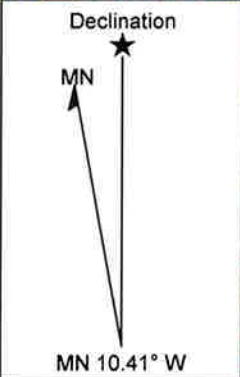
Name: Farley Property, Harden's Farm  
Date: 08/09/18  
Scale: 1 inch = 660 ft.

Location: Charles City, VA

**FARLEY PROPERTY  
HARDEN'S FARM  
CHARLES CITY, VA**

**LOGGING  
ACCESS**

**VIEWING  
ACCESS ROAD**

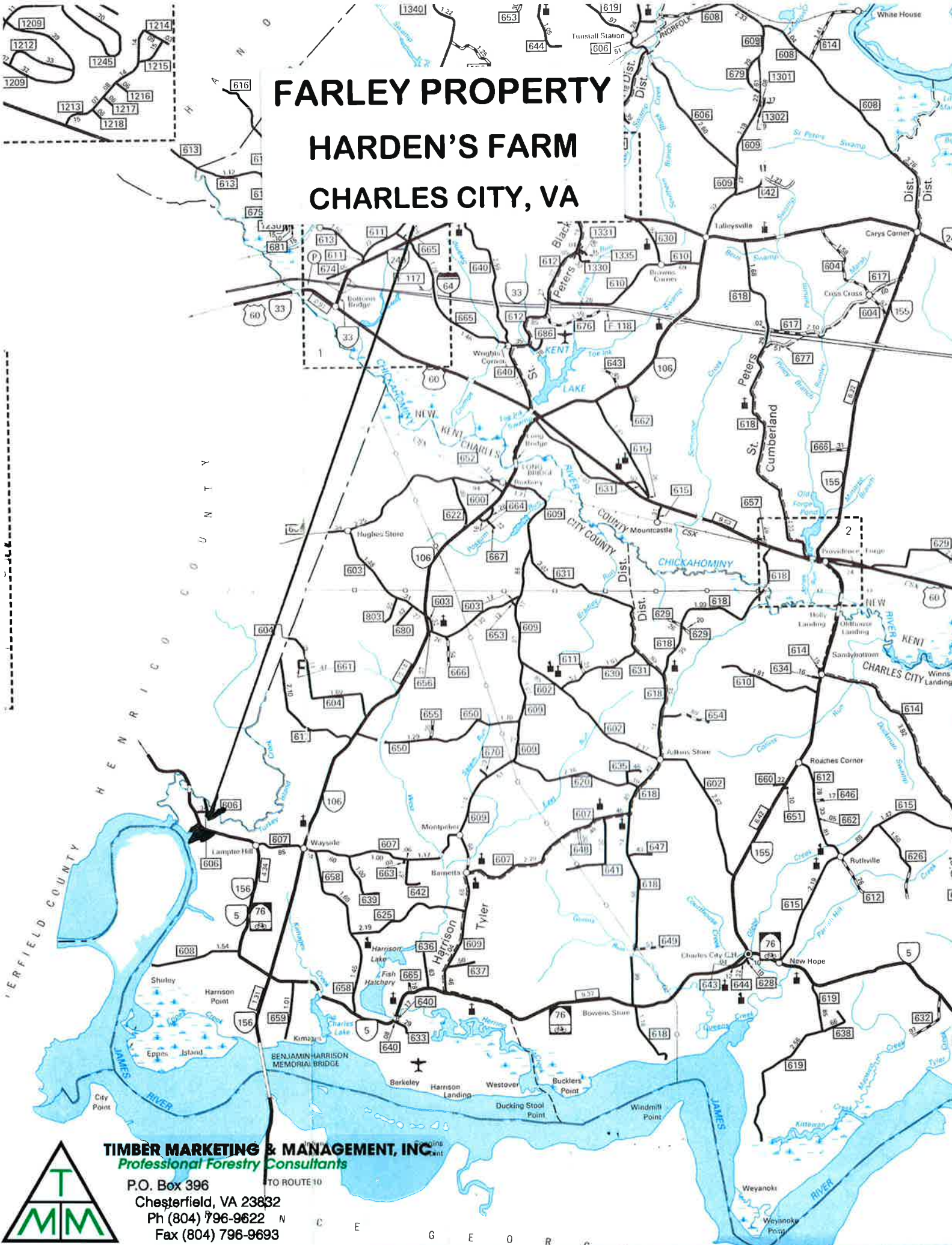


**TIMBER MARKETING & MANAGEMENT INC.**  
*Professional Forestry Consultants*  
P.O. Box 396  
Chesterfield, VA 23832  
Ph (804) 796-9622  
Fax (804) 796-9693  
[www.tmmva.com](http://www.tmmva.com)

Name: Farley Property, Harden's Farm  
Date: 08/09/18  
Scale: 1 inch = 660 ft.

Location: Charles City, VA

# FARLEY PROPERTY HARDEN'S FARM CHARLES CITY, VA



**TIMBER MARKETING & MANAGEMENT, INC.**  
*Professional Forestry Consultants*

P.O. Box 396  
Chesterfield, VA 23832  
Ph (804) 796-9622  
Fax (804) 796-9693

