**TIMBER MARKETING & MANAGEMENT INC.***Professional Forestry Consultants*

P.O. Box 396

Chesterfield, VA 23832

Ph (804) 796-9622

Fax (804) 796-9693

www.tmmva.com

Sale Date:	August 29, 2019
Time:	11:00 a.m.
Day:	Thursday
Total Vol./Acre:	20,227 B. F.
Pine Vol/Tree:	311 B. F.
Hdwd. Vol/Tree:	152 B. F.

CLEAR- CUT SALE

Having been employed by **Frederick Fisher** we solicit bids on all merchantable timber, except the trees to be retained and described in Condition #8 below, on **59 +/- acres** in **Charles City County Virginia** and as shown on the attached map.

We made a 2% plot cruise of the pulpwood trees to be harvested. Our estimate of their volume is:

<u>Pulpwood</u>	<u>Cords</u>	<u>Tons</u>
Pine	23	60
Soft Hardwood	233	606
Hard Hardwood	<u>26</u>	<u>68</u>
Total:	282	733

We have made a 100% count of the sawtimber-size trees to be harvested. Our estimate of their volume is:

<u>Sawtimber</u>			
Loblolly Pine	1,143,800	Elm	1,400
Poplar	37,900	Ash	200
Gum	8,200	Beech	100
Maple	1,900	Black Cherry	<u>100</u>
		Total:	1,193,600 BF Int 1/4" Scale

The above volumes are not guaranteed; however, care was taken in the field to assemble the above tables. You should note how your utilization practices may vary from the above and make any necessary adjustments.

Conditions

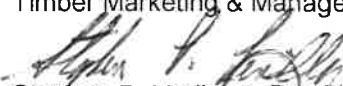
1. The landowner assumes responsibility for compliance with the Virginia State Seed Tree Law.
2. A period of time of until October 30, 2021 will be allowed to cut and remove the timber.
3. Roads **must** be maintained and restored to their original condition upon completion of the logging. Any newly constructed roads and decks must be left in a graded condition and must be seeded upon completion of logging. Any newly constructed haul roads, skid roads and log decks and all logging operations must be in accordance with the guidelines set out in the **Best Management Practices Manual** of the Virginia Department of Forestry.
4. No tops or laps will be allowed to remain in the streams, buffers or over cutting boundaries. They must be pulled back immediately.
5. Only the blue marked trees are to be cut from Streamside Management Zones.
6. No logging will be permitted during excessively wet weather conditions as determined by Timber Marketing & Management, Inc. If logging is halted due to weather conditions, then an extension of time equal to the time lost will be granted.
7. A \$3,000.00 performance bond will be paid at closing and held by Timber Marketing & Management, Inc. to insure compliance with all BMP requirements, road maintenance and conditions of the Timber Purchase Contract.
8. The landowner wishes to retain all sawtimber trees of red oak, white oak and hickory as well as any quality red oaks of pulpwood size 8" to 10.99" D.B.H. The trees to be retained will be flagged by Timber Marketing & Management, Inc. prior to the harvest. **Note:** We inventoried the the sawtimber and there are 182 red oaks, 1 white oak and 1 hickory. These inventoried trees, although they have paint on them, are **not** included in the sale and they will be flagged prior to the harvest.

Only sealed bids will be accepted and owners reserve the right to reject any or all bids. BIDS SHOULD BE SUBMITTED PRIOR TO THE TIME OF BID OPENING AND CAN BE SUBMITTED VIA: Mail to: Timber Marketing & Management, Inc. P. O. Box 396, Chesterfield, Virginia 23832 **OR** hand delivered to 9520 Ironbridge Road, Chesterfield, Virginia **OR** telephoned in to 804-796-9622 **OR** faxed to 804-796-9693 **OR** emailed to tmm4u@aol.com Bids must be made on a lump-sum basis and must be received at this address no later than the posted bid date and time as shown on the cover. Closing shall take place within 30 days of bid acceptance.

There will be no scheduled show trip of the tract; however, you may call and set an appointment or you may inspect the property at your own leisure.

An electronic copy of this sale notice, including maps and volumes, is available for download and viewing on our website at www.tmmva.com under the section titled Timber Sale Notices.

Sincerely,
Timber Marketing & Management, Inc.



Stephen P. Lindberg, President
804-512-3578 mobile
804-796-9622 office

Liberty Hall - Pine Block

Timber Marketing & Management, Inc.

Professional Forestry Consultants

P.O. Box 396

Chesterfield, VA 23832-0000

Phone: (804) 796-9622 • Fax: (804) 796-9693

Pulpwood Cruise: 2.0%

Sawtimber Cruise: 100.0%

Cruise Date: Saturday, May 11, 2019
 Owner's Name: Fred Fisher
 County/State: Charles City County, VA
 Acreage: 59+/-
 Cruise Type: Tree Count
 Harvest Type: Select Cut
 Total BF/Acre: 20,227
 Pine Vol/Tree: 311.0
 Hardwood Vol/Tree: 152.3

Volume Legend:

- 1) Diameters shown in inches (DBH)
- 2) Logs measured in 16' increments
- 3) Sawtimber volumes are shown in thousands of board feet (MBF)
- 4) Volume scale used for each species of sawtimber is noted
- 5) Pulpwood volumes are shown in standard cords (128 cubic feet)

Comments:

Pulpwood Standard Cord

DBH	Wood Classification						# Trees	Volume
	Pine		Soft Hardwood		Hard Hardwood			
# Trees	Volume	# Trees	Volume	# Trees	Volume	# Trees	Volume	
6	100	5	1,750	68	100	4		
8	100	10	750	59	200	16		
10	50	8	350	47	50	7		
12			300	59				
Total	250	23	3,150	233	350	26		

Ash - Sawtimber International 1/4 Scale

DBH	Number of Logs					# Trees	Volume	% of Total
	1-Log	2-Log	3-Log	4-Log	5-Log			
20	1					1	0.2	100.0%
Total	1					1	0.2	

Beech - Sawtimber International 1/4 Scale

DBH	Number of Logs					# Trees	Volume	% of Total
	1-Log	2-Log	3-Log	4-Log	5-Log			
16	1					1	0.1	100.0%
Total	1					1	0.1	

Black Cherry - Sawtimber International 1/4 Scale

DBH	Number of Logs					# Trees	Volume	% of Total
	1-Log	2-Log	3-Log	4-Log	5-Log			
14	1					1	0.1	100.0%
Total	1					1	0.1	

Elm - Sawtimber International 1/4 Scale

DBH	Number of Logs					# Trees	Volume	% of Total
	1-Log	2-Log	3-Log	4-Log	5-Log			
12	1					1	0.1	4.1%
14	3	2				5	0.5	39.3%
16	3					3	0.3	24.9%
18		1				1	0.2	18.3%
20	1					1	0.2	13.4%
Total	8	3				11	1.4	

Gum - Sawtimber International 1/4 Scale

DBH	Number of Logs					# Trees	Volume	% of Total
	1-Log	2-Log	3-Log	4-Log	5-Log			
12	33					33	1.8	22.6%
14	16	16				32	3.6	43.8%
16	1	7	1			9	1.7	20.7%
18		1				1	0.2	3.0%
20			1			1	0.4	5.2%
22		1				1	0.4	4.7%
Total	50	25	2			77	8.2	

Loblolly Pine - Sawtimber International 1/4 Scale

DBH	Number of Logs					# Trees	Volume	% of Total
	1-Log	2-Log	3-Log	4-Log	5-Log			
10	110	20				130	5.1	0.4%
12	105	112	194			411	39.5	3.5%
14	37	143	350	11		541	90.7	7.9%
16	19	112	508	183		822	209.3	18.3%
18	5	51	421	332		809	288.3	25.2%
20		22	280	240	8	550	254.0	22.2%
22		15	135	125	5	280	160.5	14.0%
24		6	59	46	4	115	80.0	7.0%
26			13	5		18	14.6	1.3%
28			2			2	1.8	0.2%
Total	276	481	1,962	942	17	3,678	1,143.8	

Maple - Sawtimber International 1/4 Scale

DBH	Number of Logs					# Trees	Volume	% of Total
	1-Log	2-Log	3-Log	4-Log	5-Log			
12	4					4	0.2	11.9%
14	9	2				11	1.0	54.5%
16	1		1			2	0.4	19.5%
24	1					1	0.3	14.1%
Total	15	2	1			18	1.9	

Liberty Hall - Pine Block

Timber Marketing & Management, Inc.

Cruise Date: Saturday, May 11, 2019
 Owner's Name: Fred Fisher
 County/State: Charles City County, VA

Poplar - Sawtimber International 1/4 Scale

DBH	Number of Logs					# Trees	Volume	% of Total
	1-Log	2-Log	3-Log	4-Log	5-Log			
12	36					36	2.0	5.3%
14	22	56	2			80	10.1	26.7%
16	5	32	13	1		51	10.3	27.1%
18	3	17	12	1		33	9.1	24.0%
20		8	4			12	4.2	11.1%
22	1	2	1			4	1.5	4.0%
24			1			1	0.6	1.7%
Total	67	115	33	2		217	37.9	

Sawtimber Volume by Timber Type

Timber Type	# Trees	Volume	Avg BF/Tree	% of Total
Hardwood	326	49.7	152.3	4.2%
Pine	3,678	1,143.8	311.0	95.8%
Total	4,004	1,193.4	298.1	

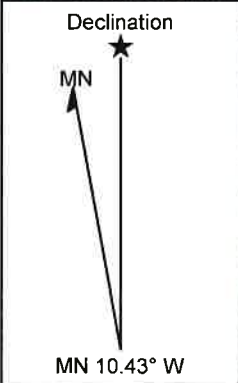
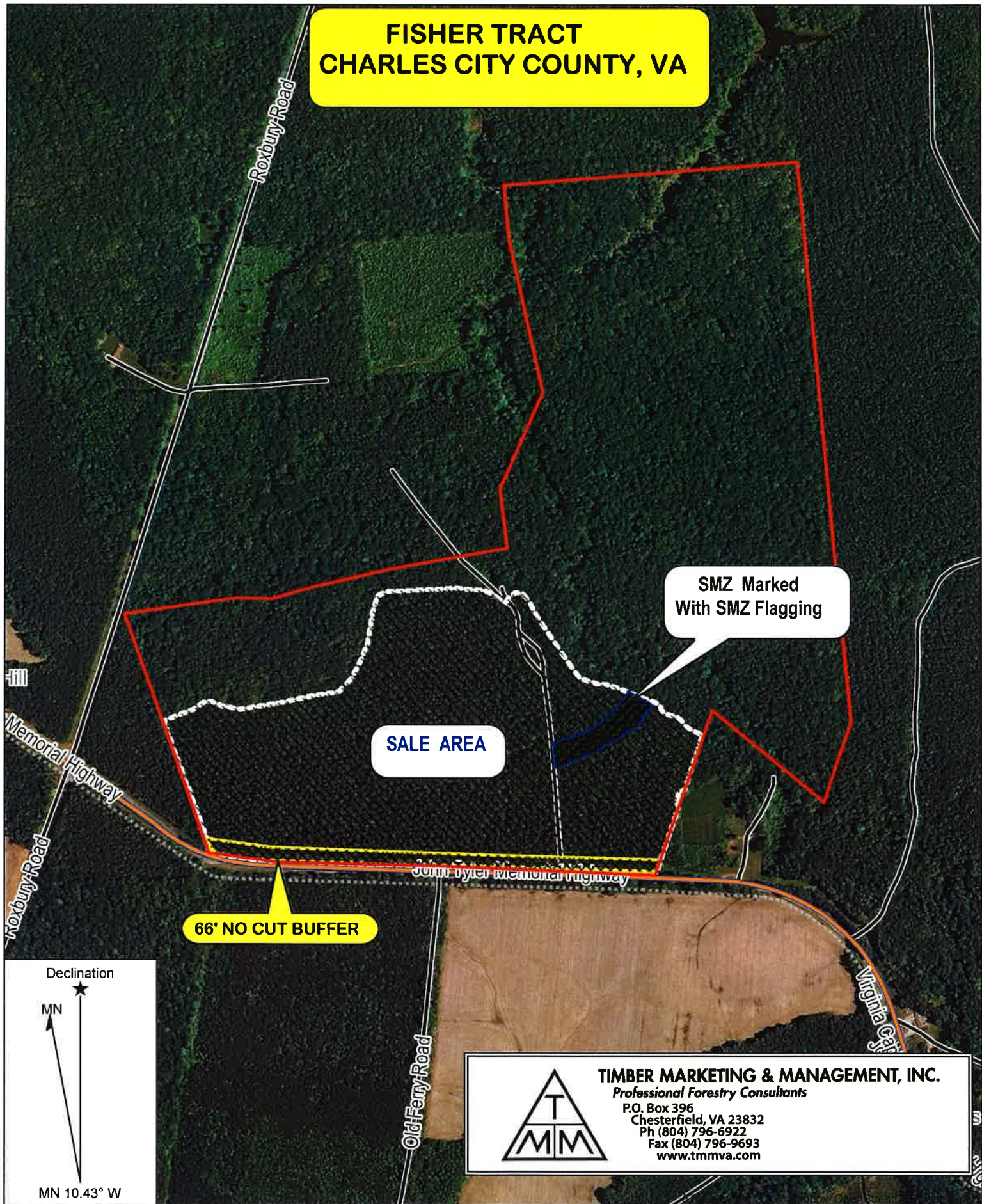
Sawtimber Volume by DBH

DBH	# Trees	Volume	Avg BF/Tree	% of Total
10	130	5.1	39.5	0.4%
12	485	43.6	89.9	3.7%
14	670	106.0	158.3	8.9%
16	888	222.1	250.1	18.6%
18	844	297.9	352.9	25.0%
20	565	259.0	458.4	21.7%
22	285	162.4	569.8	13.6%
24	117	80.9	691.2	6.8%
26	18	14.6	812.6	1.2%
28	2	1.8	904.0	0.2%
Total	4,004	1,193.4	298.1	

Sawtimber Volume by Species

Species	# Trees	Volume	Avg BF/Tree	% of Total
Ash	1	0.2	181.0	0.0%
Beech	1	0.1	112.0	0.0%
Black Cherry	1	0.1	83.0	0.0%
Elm	11	1.4	122.9	0.1%
Gum	77	8.2	106.4	0.7%
Loblolly Pine	3,678	1,143.8	311.0	95.8%
Maple	18	1.9	104.8	0.2%
Poplar	217	37.9	174.4	3.2%
Total	4,004	1,193.4	298.1	

**FISHER TRACT
CHARLES CITY COUNTY, VA**



TIMBER MARKETING & MANAGEMENT, INC.
Professional Forestry Consultants
P.O. Box 396
Chesterfield, VA 23832
Ph (804) 796-6922
Fax (804) 796-9693
www.tmmva.com

Name: Satellite Image
Date: 07/24/19
Scale: 1 inch = 660 ft.

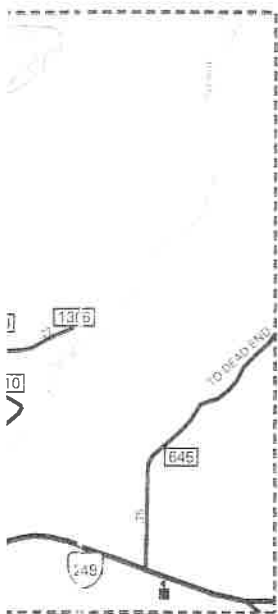
Location: 037° 20' 42.7914" N, 077° 12' 49.3609" W

FISHER TRACT

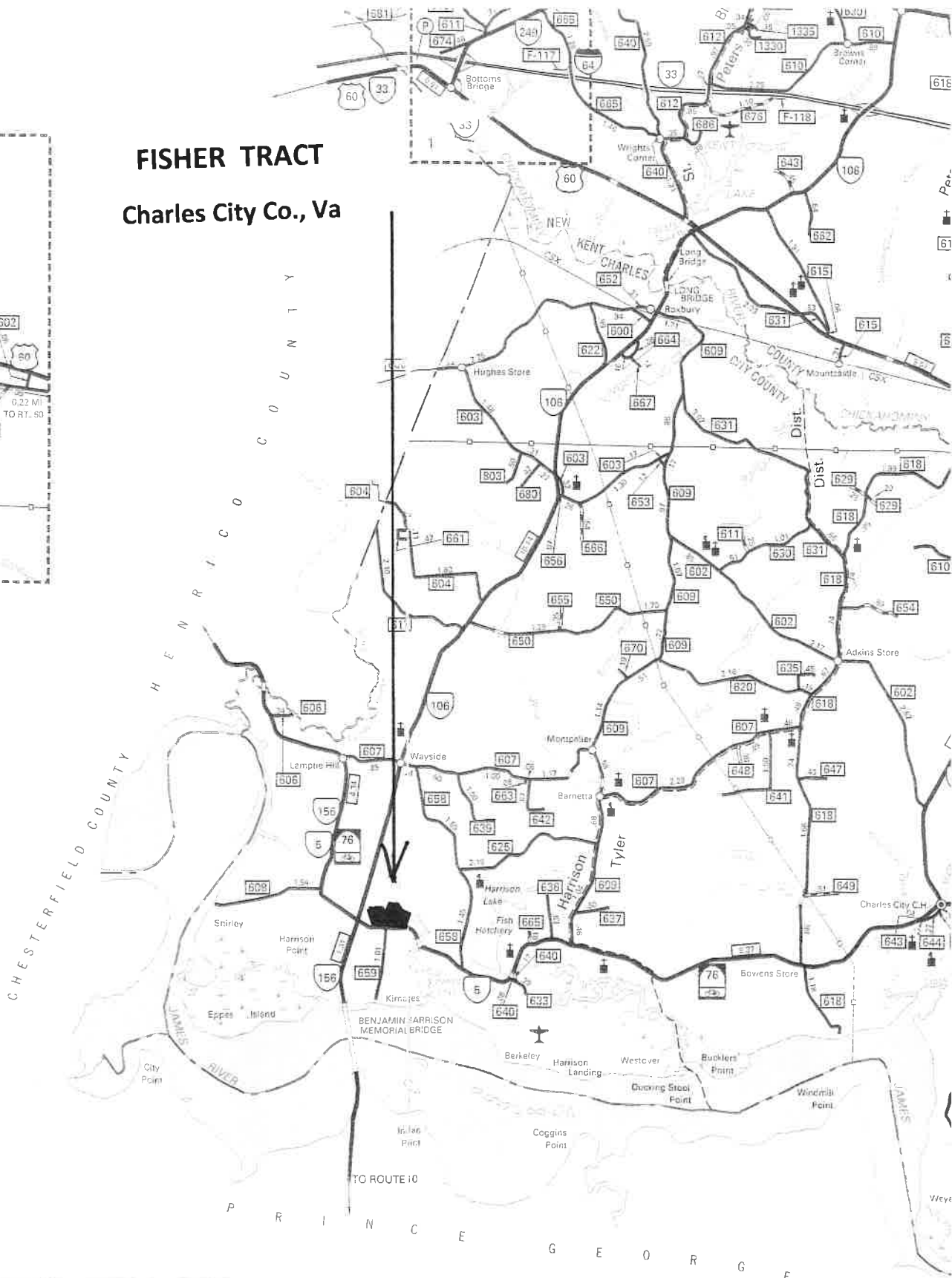
Charles City Co., Va



2
E FORGE AREA
AES MAP 5 ALE



AREA
MAP SCALE



COUNTY AS OF DEC. 31, 1995 - 67.68		NEW KENT COUNTY									
SECONDARY MILEAGE TABULATION											
7/1/34	7/1/41	TYPE	12/31/50	12/31/60	12/31/70	12/31/80	12/31/84	12/31/86	12/31/88	12/31/92	12/31/95
0.00	4.34	HARD SURFACE	45.00	102.93	125.17	136.71	143.99	145.67	143.01	149.90	150.35
48.25	114.20	ALL-WEATHER SURFACE	18.16	16.85	21.27	32.39	31.21	31.77	31.77	30.50	30.34
101.55	21.40	LIGHT SURFACE	100.61	52.57	31.65	14.51	14.51	14.51	14.51	14.51	14.51
7.05	10.47	UNSURFACED	2.70	2.30	1.50	0.13	0.13	0.00	0.00	0.00	0.00
156.85	150.41	TOTAL MILEAGE	166.47	174.65	179.59	183.74	189.84	191.95	189.29	194.91	195.20

COUNTY AS OF DEC. 31, 1995 - 45.00		CHARLES CITY COUNTY									
SECONDARY MILEAGE TABULATION											
7/1/34	7/1/41	TYPE	12/31/50	12/31/60	12/31/70	12/31/80	12/31/84	12/31/86	12/31/88	12/31/92	12/31/95
13.80	43.50	HARD SURFACE	71.41	101.62	108.85	126.70	128.48	129.54	129.33	130.43	129.88
75.25	69.00	ALL-WEATHER SURFACE	7.50	8.03	19.17	14.62	12.78	14.41	12.38	9.68	9.68
12.50	4.05	LIGHT SURFACE	42.98	20.09	7.30	1.30	1.30	1.30	1.30	1.30	1.30
16.70	6.20	UNSURFACED	0.00	1.46	1.87	0.21	0.00	0.00	0.00	0.00	0.00



TIMBER-MARKETING & MANAGEMENT, INC.
 Professional Forestry Consultants
 P.O. Box 396
 Chesterfield, VA 23832
 Ph (804) 796-6922
 Fax (804) 796-9693
 www.tmmva.com

