

## TIMBER MARKETING & MANAGEMENT INC.

Professional Forestry Consultants

P.O. Box 396  
Chesterfield, VA 23832  
Ph (804) 796-9622  
Fax (804) 796-9693  
www.tmmva.com

Sale Date:	February 24, 2023
Time:	11:00 a.m.
Day:	FRIDAY
Total Vol./Acre:	11,045 B. F.
Pine Vol/Tree:	360 B. F.
Hdwd. Vol/Tree:	154 B. F.

### CLEAR- CUT SALE

Having been employed by **George Fulk** we solicit bids on all merchantable timber on **44 +/- acres** in **Rockingham** County, Virginia and as shown on the attached map.

We made a 5% plot cruise of the pulpwood-size trees to be harvested. Our estimate of their volume is:

<u>Pulpwood</u>	<u>Cords</u>	<u>Tons</u>
Pine	78	203
Hard Hardwood	<u>181</u>	<u>471</u>
<b>Total:</b>	<b>259</b>	<b>673</b>

We made a 100% count of the sawtimber-size trees to be harvested. Our estimate of their volume is:

<u>Sawtimber</u>	
White Pine	273,400
White Oak	95,100
Red Oak	84,700
Chestnut Oak	16,100
Virginia Pine	12,800
Maple	2,200
Hickory	1,600
Hemlock	200
<b>Total:</b>	<b>486,100 BF Int 1/4" Scale</b>

The above volumes are not guaranteed; however, care was taken in the field to assemble the above tables. You should note how your utilization practices may vary from the above and make any necessary adjustments.

### Conditions

1. The landowner assumes responsibility for compliance with the Virginia State Seed Tree Law.
2. A period of time of **24 months** will be allowed to cut and remove the timber.
3. Roads **must** be maintained and restored to their original condition upon completion of the logging.  
Any newly constructed roads and decks must be left in a graded condition and must be seeded upon completion of logging. Any newly constructed haul roads, skid roads and log decks and all logging operations must be in accordance with the guidelines set out in the **Best Management Practices Manual** of the Virginia Department of Forestry.
4. No tops or laps will be allowed to remain in the streams, fields, buffers or over cutting boundaries. They must be pulled back immediately.
5. Only the blue marked trees are to be cut from Streamside Management Zones.
6. No logging will be permitted during excessively wet weather conditions as determined by Timber Marketing & Management, Inc. If logging is halted due to weather conditions, then an extension of time equal to the time lost will be granted.
7. A **\$2,000.00 performance bond** will be paid at closing and held by Timber Marketing & Management, Inc. to insure compliance with all BMP requirements, road maintenance and conditions of the Timber Purchase Contract.
8. Landowner may elect a deferred payment plan as follows: 50% due at closing within 30 days of the bid acceptance and 50% due within 90 days of closing or when logging begins, whichever occurs first.

Only sealed bids will be accepted and owners reserve the right to reject any or all bids. BIDS SHOULD BE SUBMITTED PRIOR TO THE TIME OF BID OPENING AND CAN BE SUBMITTED VIA: Mail to: Timber Marketing & Management, Inc. P. O. Box 396, Chesterfield, Virginia 23832 **OR** hand delivered to 9520 Ironbridge Road, Chesterfield, Virginia **OR** telephoned in to 804-796-9622 **OR** faxed to 804-796-9693 **OR** emailed to **office@tmmva.com** Bids must be made on a lump-sum basis and must be received at this address no later than the posted bid date and time as shown on the cover. Closing shall take place within 30 days of bid acceptance.

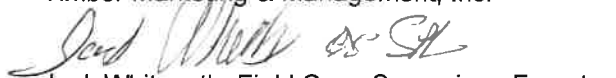
There will be no scheduled show trip of the tract; however, you may call and set an appointment or you may inspect the property at your own leisure.

An electronic copy of this sale notice, including maps and volumes, is available for download and viewing on our website at [www.tmmva.com](http://www.tmmva.com) under the Timber Sale Notices section.

Sincerely,  
Timber Marketing & Management, Inc.

  
Stephen P. Lindberg, President  
804-796-9622 Office  
804-512-3578 Mobile

Sincerely,  
Timber Marketing & Management, Inc.

  
Jack Whitworth, Field Crew Supervisor, Forester  
804-796-9622 Office  
804-356-3566 Mobile

## Fulk Tract - Clear Cut

### Timber Marketing & Management, Inc.

Professional Forestry Consultants

P.O. Box 396

Chesterfield, VA 23832-0000

Phone: (804) 796-9622 • Fax: (804) 796-9693

Pulpwood Cruise: 5.0%

Sawtimber Cruise: 100.0%

Cruise Date: Wednesday, January 11, 2023

Owner's Name: Fulk, George

County/State: Rockingham County, VA

Acreage: 44+/-

Cruise Type: Tree Count

Harvest Type: Clear Cut

Total BF/Acre: 11,045

Pine Vol/Tree: 360.4

Hardwood Vol/Tree: 153.6

#### Volume Legend:

- 1) Diameters shown in inches (DBH)
- 2) Logs measured in 16' increments
- 3) Sawtimber volumes are shown in thousands of board feet (MBF)
- 4) Volume scale used for each species of sawtimber is noted
- 5) Pulpwood volumes are shown in standard cords (128 cubic feet)

#### Comments:

#### Pulpwood

Standard Cord

DBH	Wood Classification							
	Pine		Soft Hardwood		Hard Hardwood		Cedar	
# Trees	Volume	# Trees	Volume	# Trees	Volume	# Trees	Volume	
6	300	13		760	30			
8	240	24		500	39			
10	180	30		600	80			
12	40	11		160	32			
<b>Total</b>	<b>760</b>	<b>78</b>		<b>2,020</b>	<b>181</b>			

#### Chestnut Oak - Sawtimber

International 1/4 Scale

DBH	Number of Logs					# Trees	Volume	% of Total
	1-Log	2-Log	3-Log	4-Log	5-Log			
12	57					57	3.2	19.8%
14	33	24				57	6.1	38.0%
16	15	14				29	4.3	26.9%
18	2	5				7	1.5	9.5%
20		3				3	0.9	5.8%
<b>Total</b>	<b>107</b>	<b>46</b>				<b>153</b>	<b>16.1</b>	

#### Hemlock - Sawtimber

International 1/4 Scale

DBH	Number of Logs					# Trees	Volume	% of Total
	1-Log	2-Log	3-Log	4-Log	5-Log			
12	1					1	0.1	33.3%
16	1					1	0.1	66.7%
<b>Total</b>	<b>2</b>					<b>2</b>	<b>0.2</b>	

#### Hickory - Sawtimber

International 1/4 Scale

DBH	Number of Logs					# Trees	Volume	% of Total
	1-Log	2-Log	3-Log	4-Log	5-Log			
12	9					9	0.5	31.8%
14	1	1				2	0.2	14.1%
18		2				2	0.5	31.3%
20	2					2	0.4	22.8%
<b>Total</b>	<b>12</b>	<b>3</b>				<b>15</b>	<b>1.6</b>	

#### Maple - Sawtimber

International 1/4 Scale

DBH	Number of Logs					# Trees	Volume	% of Total
	1-Log	2-Log	3-Log	4-Log	5-Log			
12	7					7	0.4	17.9%
14	6	1				7	0.6	29.2%
16	3					3	0.3	15.4%
18	3					3	0.4	19.8%
22		1				1	0.4	17.7%
<b>Total</b>	<b>19</b>	<b>2</b>				<b>21</b>	<b>2.2</b>	

#### Red Oak - Sawtimber

International 1/4 Scale

DBH	Number of Logs					# Trees	Volume	% of Total
	1-Log	2-Log	3-Log	4-Log	5-Log			
12	52					52	2.9	3.4%
14	35	42				77	8.8	10.4%
16	33	72	1			106	17.6	20.8%
18	15	81	4			100	23.6	27.9%
20	9	39	5			53	16.0	18.9%
22		20	1			21	8.3	9.8%
24		6	4			10	5.4	6.4%
26		2				2	1.1	1.3%
28			1			1	0.9	1.1%
<b>Total</b>	<b>144</b>	<b>262</b>	<b>16</b>			<b>422</b>	<b>84.7</b>	

#### Virginia Pine - Sawtimber

International 1/4 Scale

DBH	Number of Logs					# Trees	Volume	% of Total
	1-Log	2-Log	3-Log	4-Log	5-Log			
10	16					16	0.6	4.5%
12	41	6				47	2.8	22.3%
14	26	19	2			47	5.2	40.8%
16	11	11	2			24	3.8	30.1%
18	2					2	0.3	2.3%
<b>Total</b>	<b>96</b>	<b>36</b>	<b>4</b>			<b>136</b>	<b>12.8</b>	

**Fulk Tract - Clear Cut**

**Timber Marketing & Management, Inc.**

Cruise Date: Wednesday, January 11, 2023  
 Owner's Name: Fulk, George  
 County/State: Rockingham County, VA

**White Oak - Sawtimber** International 1/4 Scale

DBH	Number of Logs					# Trees	Volume	% of Total
	1-Log	2-Log	3-Log	4-Log	5-Log			
12	203					203	11.4	12.0%
14	76	147				223	27.0	28.4%
16	37	103	5			145	25.0	26.3%
18	20	51	5			76	17.2	18.1%
20	3	17	1			21	6.3	6.6%
22	1	13	2			16	6.3	6.6%
24		4				4	1.9	2.0%
<b>Total</b>	<b>340</b>	<b>335</b>	<b>13</b>			<b>688</b>	<b>95.1</b>	

**White Pine - Sawtimber** International 1/4 Scale

DBH	Number of Logs					# Trees	Volume	% of Total
	1-Log	2-Log	3-Log	4-Log	5-Log			
10	9	4				13	0.6	0.2%
12	31	19	18			68	5.6	2.1%
14	8	17	39	3		67	11.0	4.0%
16	2	18	64	20	1	105	26.4	9.7%
18	4	7	55	29	2	97	33.3	12.2%
20		7	33	39	2	81	37.4	13.7%
22	3	6	39	24	7	79	44.0	16.1%
24		9	36	13	2	60	39.3	14.4%
26		5	25	13		43	34.1	12.5%
28	1	4	25	6	1	37	33.4	12.2%
30			5			5	5.3	1.9%
32		1	1			2	2.1	0.8%
34		1				1	1.0	0.4%
<b>Total</b>	<b>58</b>	<b>98</b>	<b>340</b>	<b>147</b>	<b>15</b>	<b>658</b>	<b>273.4</b>	

**Sawtimber Volume by Timber Type**

Timber Type	# Trees	Volume	Avg BF/Tree	% of Total
Hardwood	1,301	199.8	153.6	41.1%
Pine	794	286.2	360.4	58.9%
<b>Total</b>	<b>2,095</b>	<b>486.0</b>	<b>232.0</b>	

**Sawtimber Volume by DBH**

DBH	# Trees	Volume	Avg BF/Tree	% of Total
10	29	1.1	39.2	0.2%
12	444	26.9	60.6	5.5%
14	480	59.0	123.0	12.1%
16	413	77.7	188.1	16.0%
18	287	76.8	267.7	15.8%
20	160	61.0	381.5	12.6%
22	117	59.0	504.1	12.1%
24	74	46.5	628.6	9.6%
26	45	35.2	781.9	7.2%
28	38	34.3	903.9	7.1%
30	5	5.3	1,050.0	1.1%
32	2	2.1	1,041.5	0.4%
34	1	1.0	989.0	0.2%
<b>Total</b>	<b>2,095</b>	<b>486.0</b>	<b>232.0</b>	

**Sawtimber Volume by Species**

Species	# Trees	Volume	Avg BF/Tree	% of Total
Chestnut Oak	153	16.1	105.4	3.3%
Hemlock	2	0.2	84.0	0.0%
Hickory	15	1.6	105.7	0.3%
Maple	21	2.2	104.1	0.4%
Red Oak	422	84.7	200.6	17.4%
Virginia Pine	136	12.8	93.8	2.6%
White Oak	688	95.1	138.2	19.6%
White Pine	658	273.4	415.5	56.3%
<b>Total</b>	<b>2,095</b>	<b>486.0</b>	<b>232.0</b>	



**FULK PROPERTY**  
Rockingham County, Va.

SALE AREA

**MAP SUMMARY**

Sale Boundary Flagged with Orange Glo  
SMZ Flagged with Pink SMZ  
Trees to be Harvested from SMZ Marked with Blue Paint

Declination

MN

MN 9.55° W



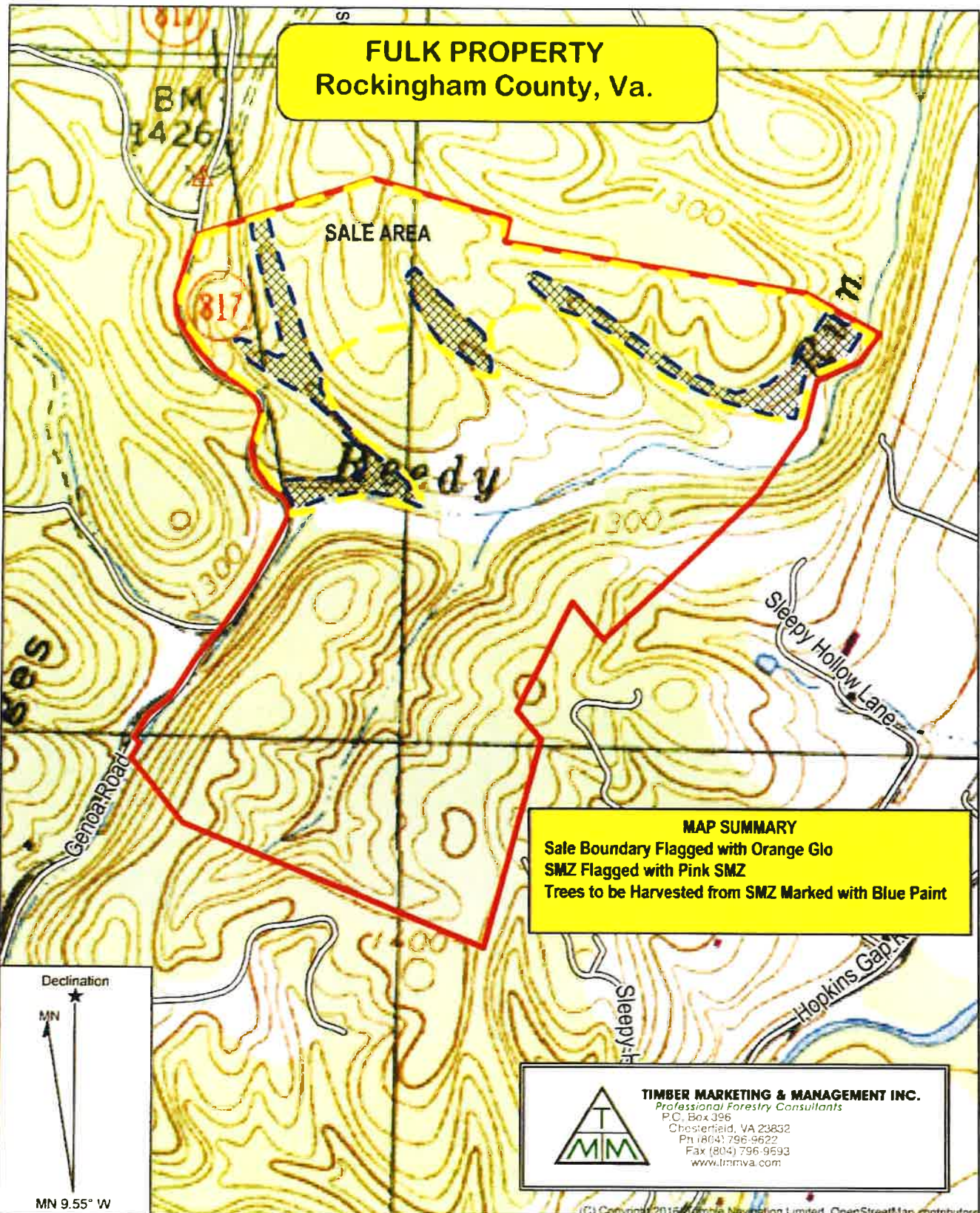
**TIMBER MARKETING & MANAGEMENT INC.**  
Professional Forestry Consultants  
P.O. Box 396  
Cheslerfield, VA 23832  
Ph (804) 796-9622  
Fax (804) 796-9693  
www.tmmva.com

Name: SINGERS GLEN NE, VA  
Date: 01/20/23  
Scale: 1 inch = 600 ft.

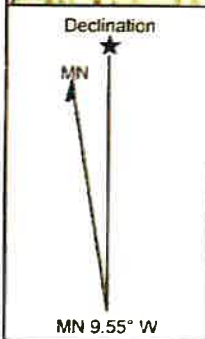
Location: FULK PROPERTY - Rockingham County, Va.  
Photo Year: 2018



**FULK PROPERTY**  
Rockingham County, Va.



**MAP SUMMARY**  
Sale Boundary Flagged with Orange Glo  
SMZ Flagged with Pink SMZ  
Trees to be Harvested from SMZ Marked with Blue Paint



**TIMBER MARKETING & MANAGEMENT INC.**  
Professional Forestry Consultants  
P.O. Box 396  
Cheslerfield, VA 23832  
Ph (804) 796-9622  
Fax (804) 796-9593  
www.tmmva.com

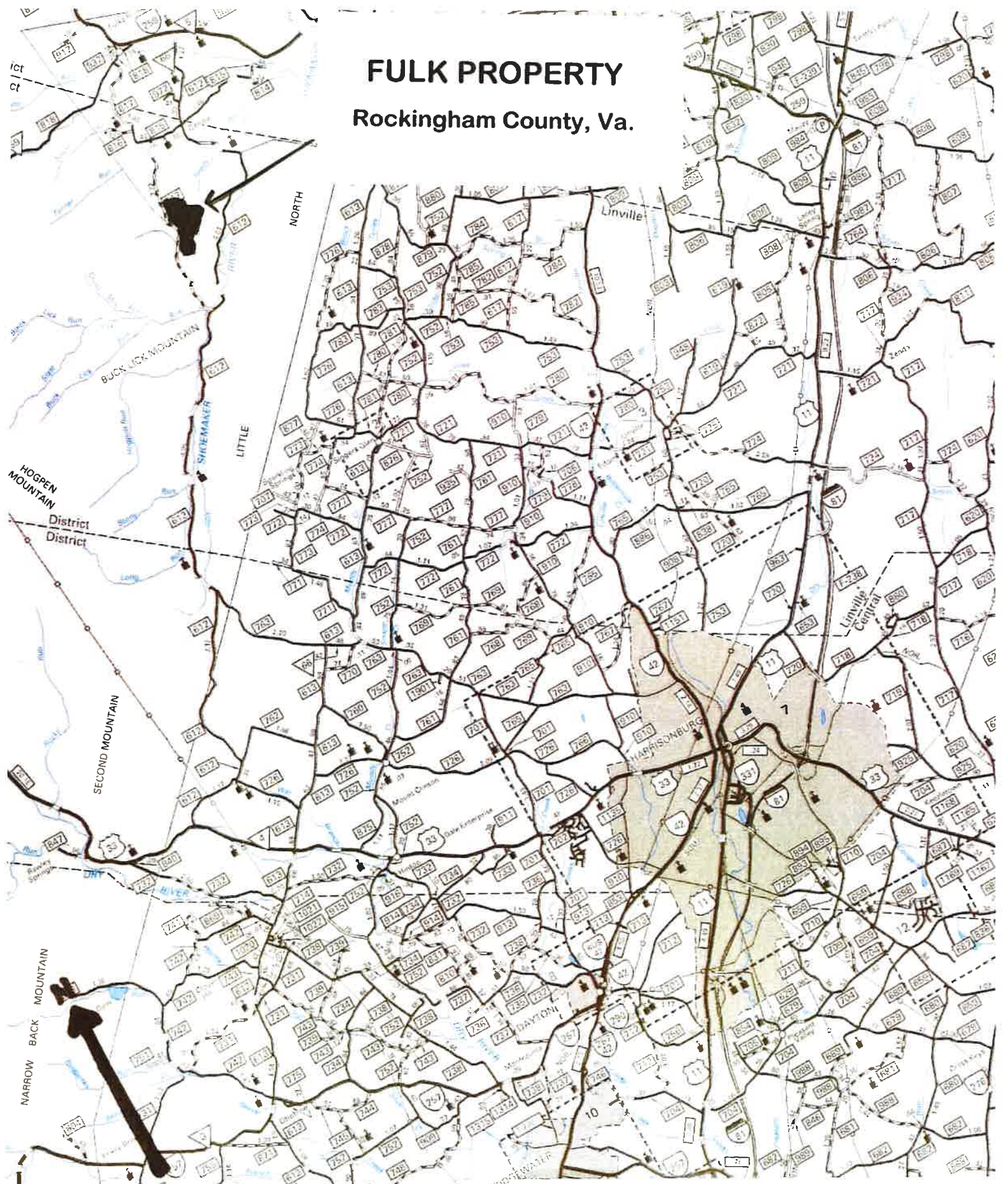
Name: SINGERS GLEN  
Date: 01/20/23  
Scale: 1 inch = 600 ft.

Location: FULK PROPERTY - Rockingham County, Va.



# FULK PROPERTY

Rockingham County, Va.



**TIMBER MARKETING & MANAGEMENT, INC.**  
*Professional Forestry Consultants*  
P.O. Box 396  
Chesterfield, VA 23832  
Ph (804) 796-6922  
Fax (804) 796-9693  
[www.tmmva.com](http://www.tmmva.com)