

TIMBER MARKETING & MANAGEMENT INC.

Professional Forestry Consultants

P.O. Box 396

Chesterfield, VA 23832

Ph (804) 796-9622

Fax (804) 796-9693

www.tmmva.com

Sale Date:	December 17, 2020
Time:	11:00 a.m.
Day:	Thursday
Total Vol./Acre:	16,643 B. F.
Pine Vol/Tree:	271 B. F.
Hdwd. Vol/Tree:	235 B. F.

**CLEAR- CUT SALE
EXCELLENT ACCESS**

Having been employed by **Louise Hoover** we solicit bids on the combination of all merchantable timber on **60 +/- acres** and on the blue marked timber only outside the clear cut area as shown as **Block D1** and on all merchantable timber on **7 +/- acres** as shown as **Block D2** and in **New Kent County, Virginia** and as shown on the attached map.

We made a 2.2% plot cruise of the pulpwood trees to be harvested. Our estimate of their volume is:

	D1	D2	Total	Total
<u>Pulpwood</u>	<u>Cords</u>	<u>Cords</u>	<u>Cords</u>	<u>Tons</u>
Pine	20	12	32	83
Soft Hardwood	89	10	99	257
Hard Hardwood	<u>17</u>	<u>9</u>	<u>26</u>	<u>68</u>
	126	31	157	408

We have made a 100% count of the sawtimber-size trees to be harvested. Our estimate of their volume is:

<u>Sawtimber</u>	<u>Block D1</u>	<u>Block D2</u>	<u>Total</u>
Loblolly Pine	744,600	85,700	830,300
Poplar	152,400	23,600	176,000
White Oak	14,000	1,100	15,100
Red oak	36,500	9,100	45,600
Gum	30,500	9,000	39,500
Maple	2,000	0	2,000
Beech	1,800	400	2,200
Sycamore	1,600	1,000	2,600
Hickory	700	100	800
Cedar	500	0	500
Black Cherry	0	300	300
River Birch	<u>200</u>	<u>0</u>	<u>200</u>
	984,800	130,300	1,115,100 BF Int 1/4" Scale

The above volumes are not guaranteed; however, care was taken in the field to assemble the above tables. You should note how your utilization practices may vary from the above and make any necessary adjustments.

Conditions

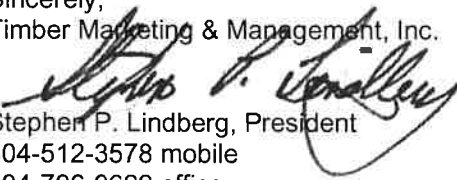
1. The landowner assumes responsibility for compliance with the Virginia State Seed Tree Law.
2. A period of time of **24 months** will be allowed to cut and remove the timber.
3. The main farm road must be maintained in the same conditions that exists as of the date harvesting commences. Any newly constructed roads and decks must be left in a graded condition and must be seeded upon completion of logging. Any newly constructed haul roads, skid roads and log decks and all logging operations must be in accordance with the guidelines set out in the **Best Management Practices Manual** of the Virginia Department of Forestry.
4. Logging bridges will be required to be used to cross any dug ditches. All ditches shall remain open and free of limbs or laps created from the harvest.
5. There is a main ditch that divides Block D1 and the block shall be logged as follows:
 - a) Block D1 South along Old River Road – Deck installed along State Road
 - b) Block D1 North of ditch – Use main farm road and deck adjacent to the farm road
 - c) Block D2 May be either skidded to the North block across fields on the western edge of the field or log trucks may access the block by paralleling the north edge of Block D1 and then across the field.
6. No tops or laps will be allowed to remain in the streams, fields, buffers or over cutting boundaries. They must be pulled back immediately.
7. Only the blue marked trees are to be cut from adjacent area outside the flagged clear cut areas.
8. No logging will be permitted during excessively wet weather conditions as determined by Timber Marketing & Management, Inc. If logging is halted due to weather conditions, then an extension of time equal to the time lost will be granted.
9. A **\$7,500.00** performance bond will be paid at closing and held by Timber Marketing & Management, Inc. to insure compliance with all BMP requirements, road maintenance and conditions of the Timber Purchase Contract.
10. **Closing will take place no later than by 5:00 p.m. on Monday December 28, 2020.**

Only sealed bids will be accepted and owners reserve the right to reject any or all bids. BIDS SHOULD BE SUBMITTED PRIOR TO THE TIME OF BID OPENING AND CAN BE SUBMITTED VIA: Mail to: Timber Marketing & Management, Inc. P. O. Box 396, Chesterfield, Virginia 23832 **OR** hand delivered to 9520 Ironbridge Road, Chesterfield, Virginia **OR** telephoned in to 804-796-9622 **OR** faxed to 804-796-9693 **OR** emailed to tmm4u@aol.com Bids must be made on a **combination of Block D1 and Block D2** and on a lump-sum basis and must be received at this address no later than the posted bid date and time as shown on the cover. **Closing will take place no later than by 5:00 p.m. on Monday December 28, 2020.**

There will be no scheduled show trip of the tract; however, you may call and set an appointment or you may inspect the property at your own leisure.

An electronic copy of this sale notice, including maps and volumes, is available for download and viewing on our website at www.tmmva.com under the Timber Sale Notices section.

Sincerely,
Timber Marketing & Management, Inc.


Stephen P. Lindberg, President
804-512-3578 mobile
804-796-9622 office

Hoover Block D1

Timber Marketing & Management, Inc.

Professional Forestry Consultants

P.O. Box 396

Chesterfield, VA 23832-0000

Phone: (804) 796-9622 • Fax: (804) 796-9693

Pulpwood Cruise: 2.2%
Sawtimber Cruise: 100.0%

Cruise Date: Wednesday, November 11, 2020
Owner's Name: Hoover
County/State: New Kent County, VA
Acreage: 60+/-
Cruise Type: Tree Count
Harvest Type: Clear Cut
Total BF/Acre: 16,414
Pine Vol/Tree: 277.0
Hardwood Vol/Tree: 236.6

Volume Legend:

- 1) Diameters shown in inches (DBH)
- 2) Logs measured in 16' increments
- 3) Sawtimber volumes are shown in thousands of board feet (MBF)
- 4) Volume scale used for each species of sawtimber is noted
- 5) Pulpwood volumes are shown in standard cords (128 cubic feet)

Comments:

Pulpwood

Standard Cord

		Wood Classification							
		Pine		Soft Hardwood		Hard Hardwood		Cedar	
DBH	# Trees	Volume	# Trees	Volume	# Trees	Volume	# Trees	Volume	
6			682	27	273	11			
8	45	5	636	50					
10	91	15	91	12	45	6			
Total	136	20	1,409	89	318	17			

Beech - Sawtimber

International 1/4 Scale

		Number of Logs							
DBH	1-Log	2-Log	3-Log	4-Log	5-Log	# Trees	Volume	% of Total	
12	1					1	0.1	3.0%	
14	2					2	0.2	9.0%	
16	5					5	0.6	30.4%	
18	1	1				2	0.4	21.3%	
20	1					1	0.2	9.8%	
22	1					1	0.2	12.0%	
24	1					1	0.3	14.4%	
Total	12	1				13	1.8		

Cedar - Sawtimber

International 1/4 Scale

		Number of Logs							
DBH	1-Log	2-Log	3-Log	4-Log	5-Log	# Trees	Volume	% of Total	
12	1					1	0.1	11.4%	
16	1					1	0.1	22.7%	
18	1					1	0.1	29.2%	
20	1					1	0.2	36.7%	
Total	4					4	0.5		

Gum - Sawtimber

International 1/4 Scale

		Number of Logs							
DBH	1-Log	2-Log	3-Log	4-Log	5-Log	# Trees	Volume	% of Total	
12	39					39	2.2	7.2%	
14	7	32				39	5.1	16.7%	
16	3	13	16			32	6.9	22.6%	
18	1	10	14			25	7.3	24.0%	
20		7	6			13	4.8	15.6%	
22		3	2			5	2.2	7.3%	
24		3	1			4	2.1	6.7%	
Total	50	68	39			157	30.5		

Hickory - Sawtimber

International 1/4 Scale

		Number of Logs							
DBH	1-Log	2-Log	3-Log	4-Log	5-Log	# Trees	Volume	% of Total	
12	4					4	0.2	33.8%	
14	3					3	0.2	37.6%	
16		1				1	0.2	28.7%	
Total	7	1				8	0.7		

Loblolly Pine - Sawtimber

International 1/4 Scale

		Number of Logs							
DBH	1-Log	2-Log	3-Log	4-Log	5-Log	# Trees	Volume	% of Total	
10	52	31				83	3.7	0.5%	
12	18	89	229			336	36.7	4.9%	
14	9	60	374	151		594	111.4	15.0%	
16	2	31	400	356		789	217.1	29.2%	
18		12	258	251	1	522	191.0	25.6%	
20		5	121	122	3	251	117.4	15.8%	
22		5	45	26		76	42.3	5.7%	
24		3	14	11		28	18.9	2.5%	
26			3	3		6	5.1	0.7%	
30			1			1	1.1	0.1%	
Total	81	236	1,445	920	4	2,686	744.6		

Hoover Block D1

Timber Marketing & Management, Inc.

Cruise Date: Wednesday, November 11, 2020
 Owner's Name: Hoover
 County/State: New Kent County, VA

Maple - Sawtimber International 1/4 Scale

Number of Logs									
DBH	1-Log	2-Log	3-Log	4-Log	5-Log	# Trees	Volume	% of Total	
12	5					5	0.3	13.7%	
14	4					4	0.3	16.3%	
16	3					3	0.3	16.5%	
18	4	1				5	0.8	40.4%	
24	1					1	0.3	13.1%	
Total	17	1				18	2.0		

Sycamore - Sawtimber International 1/4 Scale

Number of Logs									
DBH	1-Log	2-Log	3-Log	4-Log	5-Log	# Trees	Volume	% of Total	
12	2					2	0.1	7.2%	
14	2					2	0.2	10.6%	
16		1				1	0.2	12.1%	
20		2				2	0.6	40.1%	
24		1				1	0.5	30.0%	
Total	4	4				8	1.6		

Poplar - Sawtimber International 1/4 Scale

Number of Logs									
DBH	1-Log	2-Log	3-Log	4-Log	5-Log	# Trees	Volume	% of Total	
12	47					47	2.6	1.7%	
14	14	54	7			75	10.1	6.6%	
16	13	63	69	1		146	31.4	20.6%	
18	7	41	64	3		115	33.9	22.2%	
20	3	23	50	2		78	30.1	19.8%	
22		16	23	1		40	19.0	12.4%	
24		7	18			25	14.9	9.8%	
26		5	3			8	5.1	3.3%	
28		1	2			3	2.5	1.6%	
30			1			1	1.1	0.7%	
32		1				1	0.9	0.6%	
34		1				1	1.0	0.6%	
Total	84	212	237	7		540	152.4		

White Oak - Sawtimber International 1/4 Scale

Number of Logs									
DBH	1-Log	2-Log	3-Log	4-Log	5-Log	# Trees	Volume	% of Total	
12	9					9	0.5	3.6%	
14	6	4				10	1.1	7.6%	
16	2	6	1			9	1.6	11.6%	
18	1	6				7	1.6	11.7%	
20	1	4				5	1.4	10.3%	
22	1	1				2	0.6	4.4%	
24	2	3	1			6	2.6	18.5%	
26		3				3	1.7	12.0%	
28		3				3	2.0	14.1%	
32		1				1	0.9	6.2%	
Total	22	31	2			55	14.0		

Red Oak - Sawtimber International 1/4 Scale

Number of Logs									
DBH	1-Log	2-Log	3-Log	4-Log	5-Log	# Trees	Volume	% of Total	
12	50					50	2.8	7.7%	
14	27	19				46	4.9	13.5%	
16	25	19	4			48	7.4	20.4%	
18	9	19				28	6.0	16.5%	
20	3	15	3			21	6.5	17.9%	
22		8	2			10	4.2	11.4%	
24	2	2	4			8	4.0	11.1%	
26		1				1	0.6	1.5%	
Total	116	83	13			212	36.5		

River Birch - Sawtimber International 1/4 Scale

Number of Logs									
DBH	1-Log	2-Log	3-Log	4-Log	5-Log	# Trees	Volume	% of Total	
12	1					1	0.1	28.4%	
14		1				1	0.1	71.6%	
Total	1	1				2	0.2		

Hoover Block D1

Timber Marketing & Management, Inc.Cruise Date: Wednesday, November 11, 2020
Owner's Name: Hoover
County/State: New Kent County, VA**Sawtimber Volume by Timber Type**

<u>Timber Type</u>	<u># Trees</u>	<u>Volume</u>	<u>Avg BF/Tree</u>	<u>% of Total</u>
Hardwood	1,013	239.7	236.6	24.3%
Pine	2,690	745.1	277.0	75.7%
Total	3,703	984.8	266.0	

Sawtimber Volume by DBH

<u>DBH</u>	<u># Trees</u>	<u>Volume</u>	<u>Avg BF/Tree</u>	<u>% of Total</u>
10	83	3.7	44.6	0.4%
12	495	45.6	92.1	4.6%
14	776	133.6	172.2	13.6%
16	1,035	265.8	256.8	27.0%
18	705	241.2	342.1	24.5%
20	372	161.3	433.6	16.4%
22	134	68.5	510.9	7.0%
24	74	43.5	587.6	4.4%
26	18	12.4	689.8	1.3%
28	6	4.4	737.3	0.4%
30	2	2.1	1,050.0	0.2%
32	2	1.7	870.0	0.2%
34	1	1.0	989.0	0.1%
Total	3,703	984.8	266.0	

Sawtimber Volume by Species

<u>Species</u>	<u># Trees</u>	<u>Volume</u>	<u>Avg BF/Tree</u>	<u>% of Total</u>
Beech	13	1.8	141.7	0.2%
Cedar	4	0.5	123.3	0.1%
Gum	157	30.5	194.5	3.1%
Hickory	8	0.7	82.9	0.1%
Loblolly Pine	2,686	744.6	277.2	75.6%
Maple	18	2.0	113.2	0.2%
Poplar	540	152.4	282.3	15.5%
Red Oak	212	36.5	171.9	3.7%
River Birch	2	0.2	98.5	0.0%
Sycamore	8	1.6	195.6	0.2%
White Oak	55	14.0	253.7	1.4%
Total	3,703	984.8	266.0	

Hoover Block D2

Timber Marketing & Management, Inc.

Professional Forestry Consultants

P.O. Box 396

Chesterfield, VA 23832-0000

Phone: (804) 796-9622 • Fax: (804) 796-9693

Pulpwood Cruise: 10.0%

Sawtimber Cruise: 100.0%

Cruise Date: Tuesday, November 10, 2020

Owner's Name: Hoover

County/State: New Kent County, VA

Acreage: 7+/-

Cruise Type: Tree Count

Harvest Type: Clear Cut

Total BF/Acre: 18,635

Pine Vol/Tree: 229.7

Hardwood Vol/Tree: 228.4

Volume Legend:

- 1) Diameters shown in inches (DBH)
- 2) Logs measured in 16' increments
- 3) Sawtimber volumes are shown in thousands of board feet (MBF)
- 4) Volume scale used for each species of sawtimber is noted
- 5) Pulpwood volumes are shown in standard cords (128 cubic feet)

Comments:

Pulpwood

Standard Cord

DBH	Wood Classification						
	Pine		Soft Hardwood		Hard Hardwood		Cedar
# Trees	Volume	# Trees	Volume	# Trees	Volume	# Trees	Volume
6	20	1	80	3	50	2	
8	30	3	50	4	70	6	
10	50	8	20	3	10	1	
Total	100	12	150	10	130	9	

Beech - Sawtimber

International 1/4 Scale

DBH	Number of Logs					# Trees	Volume	% of Total
	1-Log	2-Log	3-Log	4-Log	5-Log			
16	1					1	0.1	25.6%
18	1					1	0.1	33.0%
20	1					1	0.2	41.4%
Total	3					3	0.4	

Black Cherry - Sawtimber

International 1/4 Scale

DBH	Number of Logs					# Trees	Volume	% of Total
	1-Log	2-Log	3-Log	4-Log	5-Log			
14	4					4	0.3	100.0%
Total	4					4	0.3	

Gum - Sawtimber

International 1/4 Scale

DBH	Number of Logs					# Trees	Volume	% of Total
	1-Log	2-Log	3-Log	4-Log	5-Log			
12	11					11	0.6	6.8%
14	6	11				17	2.0	22.8%
16	3	10	1			14	2.5	27.7%
18		2	1			3	0.8	9.2%
20	1		1			2	0.6	6.8%
22		5				5	1.9	21.5%
24		1				1	0.5	5.2%
Total	21	29	3			53	9.0	

Hickory - Sawtimber

International 1/4 Scale

DBH	Number of Logs					# Trees	Volume	% of Total
	1-Log	2-Log	3-Log	4-Log	5-Log			
18	1					1	0.1	100.0%
Total	1					1	0.1	

Loblolly Pine - Sawtimber

International 1/4 Scale

DBH	Number of Logs					# Trees	Volume	% of Total
	1-Log	2-Log	3-Log	4-Log	5-Log			
10	13	7				20	0.9	1.0%
12	13	20	37			70	7.0	8.2%
14	4	18	67	13		102	18.1	21.2%
16	4	7	51	31		93	24.3	28.4%
18	2	4	26	22		54	18.9	22.0%
20		3	12	6		21	9.1	10.7%
22			3			3	1.6	1.8%
24		4	2	1		7	3.9	4.6%
26		1				1	0.6	0.7%
28	1		1			2	1.3	1.5%
Total	37	64	199	73		373	85.7	

Poplar - Sawtimber

International 1/4 Scale

DBH	Number of Logs					# Trees	Volume	% of Total
	1-Log	2-Log	3-Log	4-Log	5-Log			
12	1					1	0.1	0.2%
14	5	3	1			9	1.0	4.3%
16	6	16	5			27	5.0	21.1%
18	7	6	2			15	3.2	13.4%
20		8	5			13	4.6	19.7%
22	1	3	6			10	4.6	19.3%
26		1	3			4	2.9	12.1%
28	1		1			2	1.3	5.4%
30			1			1	1.1	4.4%
Total	21	37	24			82	23.6	

Hoover Block D2

Timber Marketing & Management, Inc.

Cruise Date: Tuesday, November 10, 2020
 Owner's Name: Hoover
 County/State: New Kent County, VA

Red Oak - Sawtimber International 1/4 Scale

Number of Logs								
DBH	1-Log	2-Log	3-Log	4-Log	5-Log	# Trees	Volume	% of Total
12	7					7	0.4	4.3%
14	9					9	0.7	8.2%
16	5	1				6	0.8	8.2%
18	3	2				5	0.9	10.2%
20	2					2	0.4	4.0%
22	1	4				5	1.8	19.4%
24	1	1	2			4	2.0	22.1%
26	1	2				3	1.4	15.7%
28	2					2	0.7	8.0%
Total	31	10	2			43	9.1	

Sycamore - Sawtimber International 1/4 Scale

Number of Logs								
DBH	1-Log	2-Log	3-Log	4-Log	5-Log	# Trees	Volume	% of Total
16		1				1	0.2	18.7%
18		1				1	0.2	24.4%
20		1				1	0.3	30.8%
24	1					1	0.3	26.1%
Total	1	3				4	1.0	

White Oak - Sawtimber International 1/4 Scale

Number of Logs								
DBH	1-Log	2-Log	3-Log	4-Log	5-Log	# Trees	Volume	% of Total
14	1					1	0.1	7.6%
16	1					1	0.1	10.3%
18	2					2	0.3	26.4%
20	1		1			2	0.6	55.7%
Total	5		1			6	1.1	

Sawtimber Volume by Timber Type

Timber Type	# Trees	Volume	Avg BF/Tree	% of Total
Hardwood	196	44.8	228.4	34.3%
Pine	373	85.7	229.7	65.7%
Total	569	130.4	229.2	

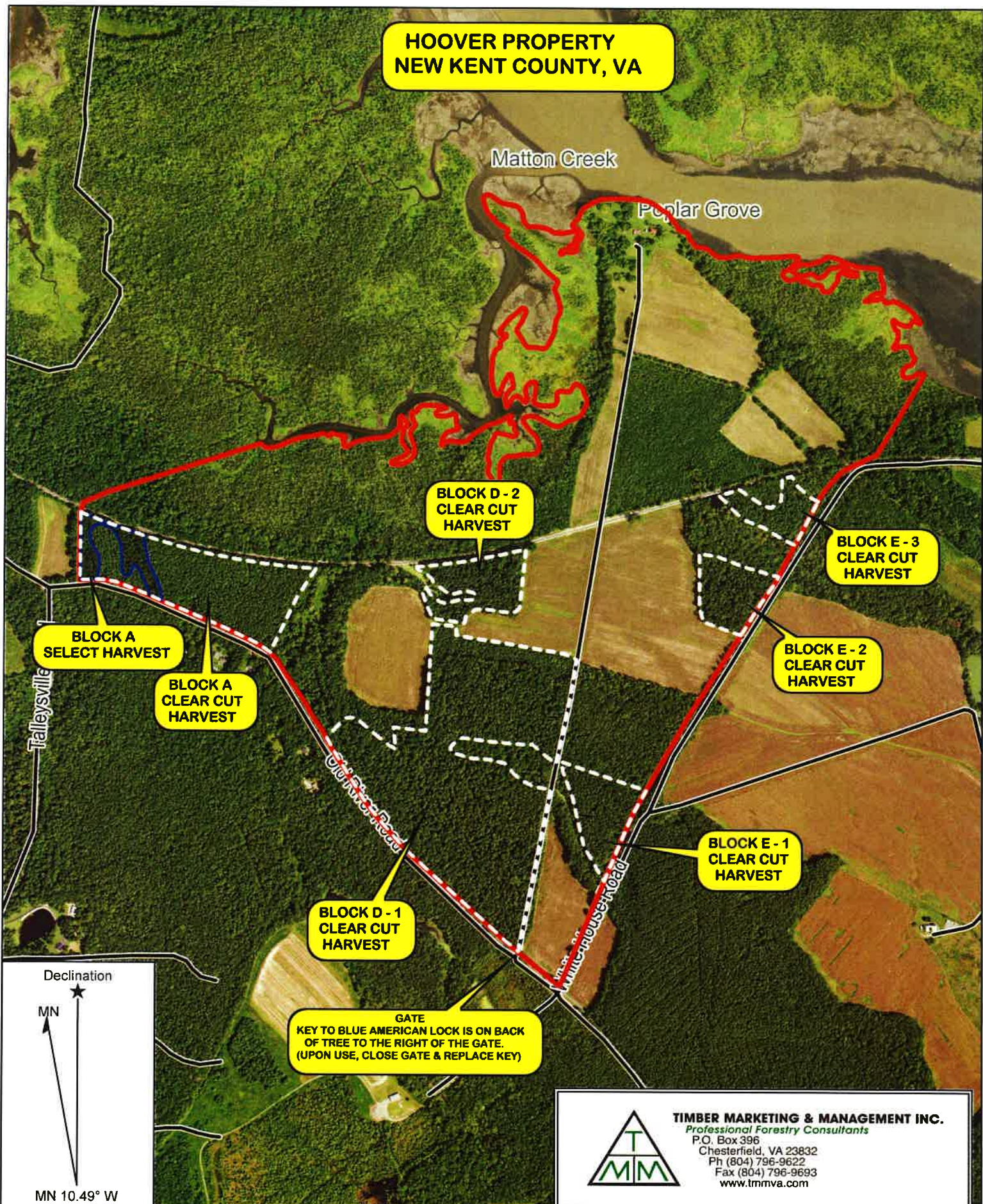
Sawtimber Volume by DBH

DBH	# Trees	Volume	Avg BF/Tree	% of Total
10	20	0.9	44.1	0.7%
12	89	8.1	90.7	6.2%
14	142	22.4	157.6	17.2%
16	143	32.9	230.3	25.3%
18	82	24.6	300.1	18.9%
20	42	15.9	377.6	12.2%
22	23	9.8	427.7	7.5%
24	13	6.7	515.0	5.1%
26	8	4.8	606.0	3.7%
28	6	3.3	546.0	2.5%
30	1	1.1	1,050.0	0.8%
Total	569	130.4	229.2	

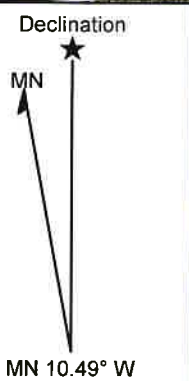
Sawtimber Volume by Species

Species	# Trees	Volume	Avg BF/Tree	% of Total
Beech	3	0.4	145.7	0.3%
Black Cherry	4	0.3	83.0	0.3%
Gum	53	9.0	169.8	6.9%
Hickory	1	0.1	144.0	0.1%
Loblolly Pine	373	85.7	229.7	65.7%
Poplar	82	23.6	288.0	18.1%
Red Oak	43	9.1	212.5	7.0%
Sycamore	4	1.0	254.5	0.8%
White Oak	6	1.1	181.8	0.8%
Total	569	130.4	229.2	

**HOOVER PROPERTY
NEW KENT COUNTY, VA**



GATE
KEY TO BLUE AMERICAN LOCK IS ON BACK
OF TREE TO THE RIGHT OF THE GATE.
(UPON USE, CLOSE GATE & REPLACE KEY)

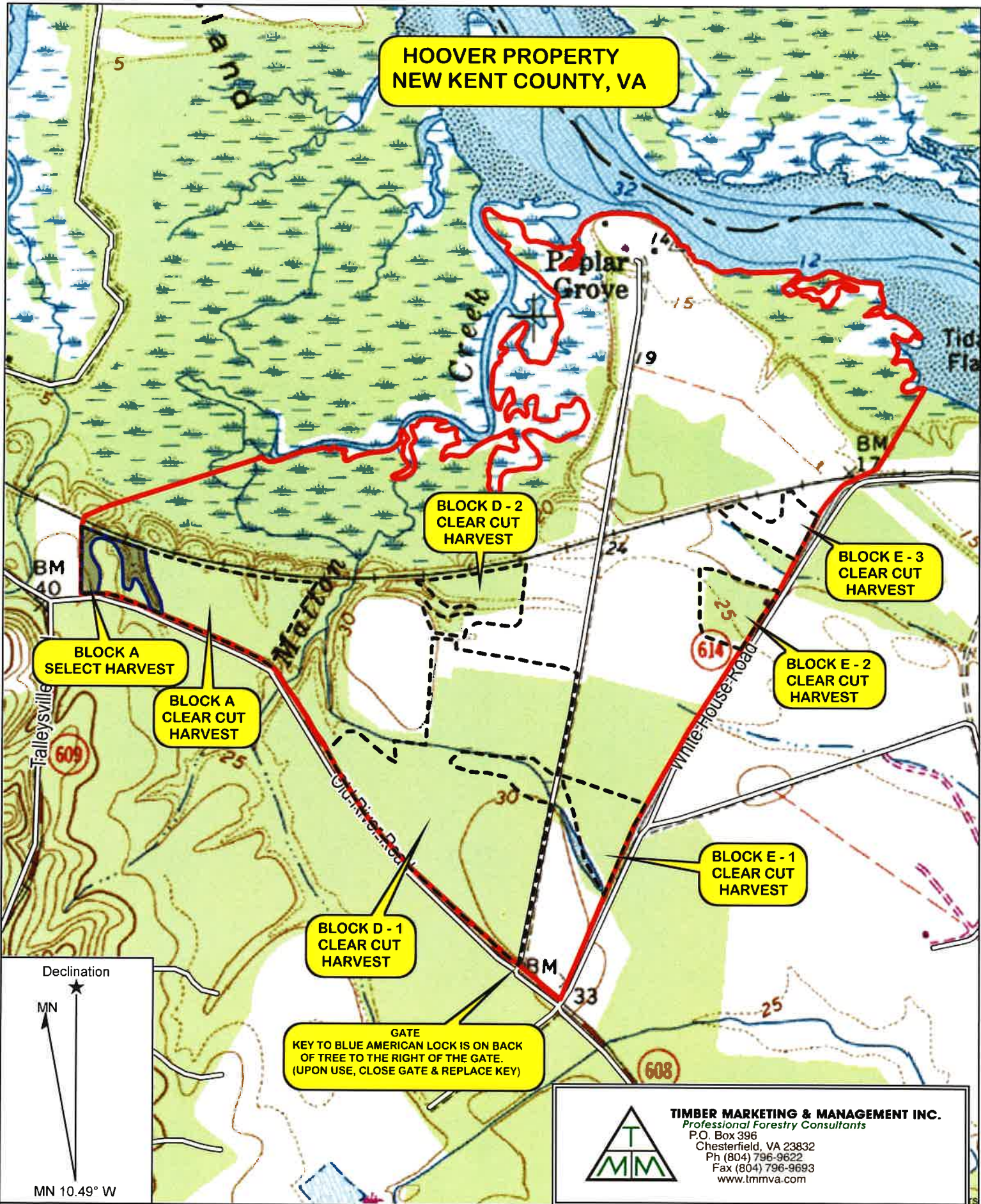


TIMBER MARKETING & MANAGEMENT INC.
Professional Forestry Consultants
P.O. Box 396
Chesterfield, VA 23832
Ph (804) 796-9622
Fax (804) 796-9693
www.tmmva.com

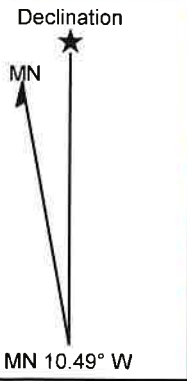
Name: Hoover Property
Date: 11/20/20
Scale: 1 inch = 1,000 ft.

Location: New Kent County, VA

**HOOVER PROPERTY
NEW KENT COUNTY, VA**



GATE
KEY TO BLUE AMERICAN LOCK IS ON BACK
OF TREE TO THE RIGHT OF THE GATE.
(UPON USE, CLOSE GATE & REPLACE KEY)

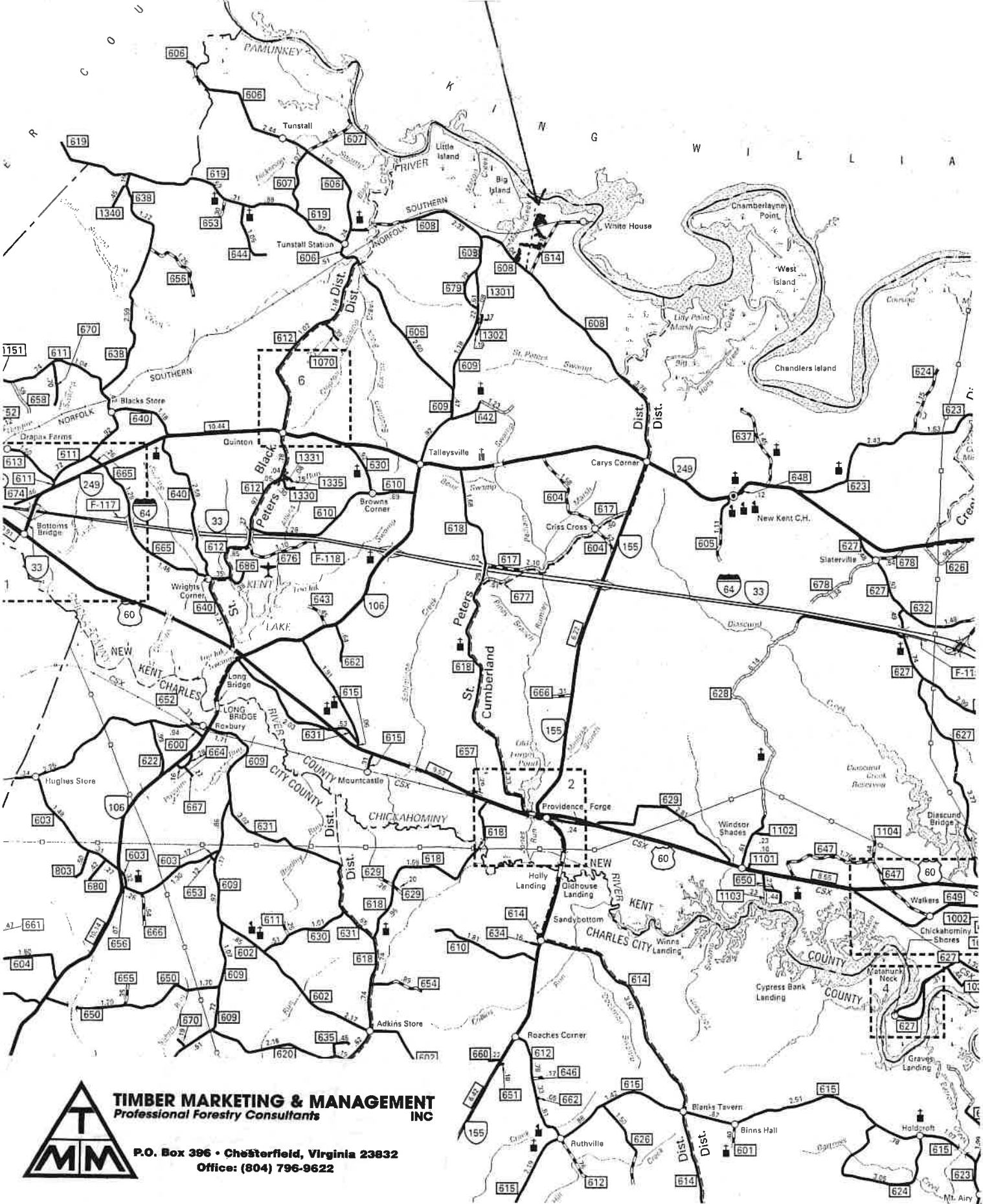


TIMBER MARKETING & MANAGEMENT INC.
Professional Forestry Consultants
P.O. Box 396
Chesterfield, VA 23832
Ph (804) 796-9622
Fax (804) 796-9693
www.tmmva.com

Name: Hoover Property
Date: 11/20/20
Scale: 1 inch = 1,000 ft.

Location: New Kent County, VA

HOOVER PROPERTY (Poplar Grove Tract) New Kent County, Virginia



**TIMBER MARKETING & MANAGEMENT
Professional Forestry Consultants
INC**

P.O. Box 396 • Chesterfield, Virginia 23832
Office: (804) 796-9622