

**TIMBER MARKETING & MANAGEMENT INC.**

*Professional Forestry Consultants*

P.O. Box 396  
 Chesterfield, VA 23832  
 Ph (804) 796-9622  
 Fax (804) 796-9693  
 www.tmmva.com

Sale Date:	<b>December 17, 2020</b>
Time:	11:00 a.m.
Day:	Thursday
Total Vol./Acre:	18,300 B. F.
Pine Vol/Tree:	219 B. F.
Hdwd. Vol/Tree:	198 B. F.

**CLEAR- CUT SALE  
 EXCELLENT ROAD FRONT ACCESS**

Having been employed by **Louise Hoover** we solicit bids on the combination of all merchantable timber on **7 +/- acres** on **Block E1** and on **7 +/- acres** on **Block E2** and on **5 +/- acres** on **Block E3** in **New Kent County, Virginia** and as shown on the attached map.

We made a 10% plot cruise of the pulpwood trees to be harvested. Our estimate of their volume is:

	<b>Block E1</b>	<b>Block E2</b>	<b>Block E3</b>	<b>Total</b>	<b>Total</b>
<u>Pulpwood</u>	<u>Cords</u>	<u>Cords</u>	<u>Cords</u>	<u>Cords</u>	<u>Tons</u>
Pine	22	14	5	41	107
Soft Hardwood	15	4	13	32	83
Hard Hardwood	<u>6</u>	<u>5</u>	<u>2</u>	13	34
	<b>43</b>	<b>23</b>	<b>20</b>	<b>86</b>	<b>224</b>

We have made a 100% count of the sawtimber-size trees to be harvested. Our estimate of their volume is:

<u>Sawtimber</u>	<u>Block E1</u>	<u>Block E2</u>	<u>Block E3</u>	<u>Total</u>
Loblolly Pine	121,200	83,400	75,400	280,000
Poplar	7,300	24,500	3,000	34,800
White Oak	4,500	100	300	4,900
Red oak	3,900	8,700	700	13,300
Gum	3,300	9,600	200	13,100
Maple	200	0	100	300
Hickory	100	300	0	400
Beech	100	200	200	500
River Birch	<u>0</u>	<u>400</u>	<u>0</u>	<u>400</u>
	<b>140,600</b>	<b>127,200</b>	<b>79,900</b>	<b>347,700 BF Int 1/4" Scale</b>

The above volumes are not guaranteed; however, care was taken in the field to assemble the above tables. You should note how your utilization practices may vary from the above and make any necessary adjustments.

### Conditions

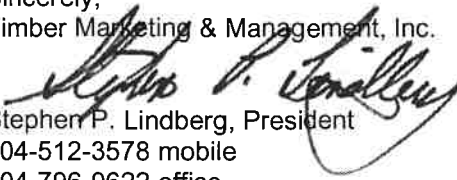
1. The landowner assumes responsibility for compliance with the Virginia State Seed Tree Law.
2. A period of time of **24 months** will be allowed to cut and remove the timber.
3. Roads **must** be maintained and restored to their original condition upon completion of the logging. Any newly constructed roads and decks must be left in a graded condition and must be seeded upon completion of logging. Any newly constructed haul roads, skid roads and log decks and all logging operations must be in accordance with the guidelines set out in the **Best Management Practices Manual** of the Virginia Department of Forestry.
4. No tops or laps will be allowed to remain in the streams, fields, buffers or over cutting boundaries. They must be pulled back immediately.
5. No logging will be permitted during excessively wet weather conditions as determined by Timber Marketing & Management, Inc. If logging is halted due to weather conditions, then an extension of time equal to the time lost will be granted.
6. A **\$2,500.00** performance bond will be paid at closing and held by Timber Marketing & Management, Inc. to insure compliance with all BMP requirements, road maintenance and conditions of the Timber Purchase Contract.
7. **Closing will take place no later than by 5:00 p.m. on Monday December 28, 2020.**

Only sealed bids will be accepted and owners reserve the right to reject any or all bids. BIDS SHOULD BE SUBMITTED PRIOR TO THE TIME OF BID OPENING AND CAN BE SUBMITTED VIA: Mail to: Timber Marketing & Management, Inc. P. O. Box 396, Chesterfield, Virginia 23832 **OR** hand delivered to 9520 Ironbridge Road, Chesterfield, Virginia **OR** telephoned in to 804-796-9622 **OR** faxed to 804-796-9693 **OR** emailed to [tmm4u@aol.com](mailto:tmm4u@aol.com). Bids must be made on a **combination of Blocks E1, E2 and E3** and lump-sum basis and must be received at this address no later than the posted bid date and time as shown on the cover. **Closing will take place no later than by 5:00 p.m. on Monday December 28, 2020.**

There will be no scheduled show trip of the tract; however, you may call and set an appointment or you may inspect the property at your own leisure.

An electronic copy of this sale notice, including maps and volumes, is available for download and viewing on our website at [www.tmmva.com](http://www.tmmva.com) under the Timber Sale Notices section.

Sincerely,  
Timber Marketing & Management, Inc.

  
Stephen P. Lindberg, President  
804-512-3578 mobile  
804-796-9622 office

## Hoover Block E1

### Timber Marketing & Management, Inc.

Professional Forestry Consultants

P.O. Box 396

Chesterfield, VA 23832-0000

Phone: (804) 796-9622 • Fax: (804) 796-9693

Pulpwood Cruise: 10.0%

Sawtimber Cruise: 100.0%

Cruise Date: Tuesday, November 17, 2020

Owner's Name: Hoover

County/State: New Kent County, VA

Acreage: 7+/-

Cruise Type: Tree Count

Harvest Type: Clear Cut

Total BF/Acre: 20,101

Pine Vol/Tree: 210.0

Hardwood Vol/Tree: 174.3

#### Volume Legend:

- 1) Diameters shown in inches (DBH)
- 2) Logs measured in 16' increments
- 3) Sawtimber volumes are shown in thousands of board feet (MBF)
- 4) Volume scale used for each species of sawtimber is noted
- 5) Pulpwood volumes are shown in standard cords (128 cubic feet)

#### Comments:

#### Pulpwood

Standard Cord

DBH	Pine		Soft Hardwood		Hard Hardwood		Cedar	
	# Trees	Volume	# Trees	Volume	# Trees	Volume	# Trees	Volume
6			60		2	30	1	
8	60	6	90		7	30	2	
10	80	13	40		5	20	3	
12	10	3						
<b>Total</b>	<b>150</b>	<b>22</b>	<b>190</b>	<b>15</b>	<b>80</b>	<b>6</b>		

#### Beech - Sawtimber

International 1/4 Scale

DBH	Number of Logs					# Trees	Volume	% of Total
	1-Log	2-Log	3-Log	4-Log	5-Log			
18	1					1	0.1	100.0%
<b>Total</b>	<b>1</b>					<b>1</b>	<b>0.1</b>	

#### Gum - Sawtimber

International 1/4 Scale

DBH	Number of Logs					# Trees	Volume	% of Total
	1-Log	2-Log	3-Log	4-Log	5-Log			
12	9					9	0.5	15.4%
14	6					6	0.5	15.2%
16	1					1	0.1	3.4%
18	1	3	1			5	1.2	37.3%
20		3				3	0.9	28.7%
<b>Total</b>	<b>17</b>	<b>6</b>	<b>1</b>			<b>24</b>	<b>3.3</b>	

#### Hickory - Sawtimber

International 1/4 Scale

DBH	Number of Logs					# Trees	Volume	% of Total
	1-Log	2-Log	3-Log	4-Log	5-Log			
14		1				1	0.1	100.0%
<b>Total</b>		<b>1</b>				<b>1</b>	<b>0.1</b>	

#### Loblolly Pine - Sawtimber

International 1/4 Scale

DBH	Number of Logs					# Trees	Volume	% of Total
	1-Log	2-Log	3-Log	4-Log	5-Log			
10	34	3				37	1.4	1.2%
12	18	47	61			126	12.7	10.4%
14	6	23	142	8		179	31.9	26.3%
16	4	12	78	35		129	33.4	27.5%
18	1	5	43	17		66	22.7	18.7%
20		3	19	8		30	13.2	10.9%
22		1	4	1		6	3.1	2.6%
24			2			2	1.3	1.1%
26			1			1	0.8	0.6%
32		1				1	0.9	0.7%
<b>Total</b>	<b>63</b>	<b>95</b>	<b>350</b>	<b>69</b>		<b>577</b>	<b>121.2</b>	

#### Maple - Sawtimber

International 1/4 Scale

DBH	Number of Logs					# Trees	Volume	% of Total
	1-Log	2-Log	3-Log	4-Log	5-Log			
12	2					2	0.1	57.4%
14	1					1	0.1	42.6%
<b>Total</b>	<b>3</b>					<b>3</b>	<b>0.2</b>	

#### Poplar - Sawtimber

International 1/4 Scale

DBH	Number of Logs					# Trees	Volume	% of Total
	1-Log	2-Log	3-Log	4-Log	5-Log			
12	7					7	0.4	5.4%
14	1	10				11	1.5	20.5%
16	1	6	5			12	2.5	34.8%
18		2	2			4	1.2	16.0%
20		1	2			3	1.2	16.0%
22			1			1	0.5	7.3%
<b>Total</b>	<b>9</b>	<b>19</b>	<b>10</b>			<b>38</b>	<b>7.3</b>	

**Hoover Block E1**

**Timber Marketing & Management, Inc.**

Cruise Date: Tuesday, November 17, 2020  
 Owner's Name: Hoover  
 County/State: New Kent County, VA

**Red Oak - Sawtimber** International 1/4 Scale

DBH	Number of Logs					# Trees	Volume	% of Total
	1-Log	2-Log	3-Log	4-Log	5-Log			
12	5					5	0.3	7.1%
14	4					4	0.3	8.4%
16	2					2	0.2	5.7%
18	2	4				6	1.3	32.4%
20	2	2				4	1.0	25.1%
22			1			1	0.5	13.4%
26	1					1	0.3	8.0%
<b>Total</b>	<b>16</b>	<b>6</b>	<b>1</b>			<b>23</b>	<b>3.9</b>	

**White Oak - Sawtimber** International 1/4 Scale

DBH	Number of Logs					# Trees	Volume	% of Total
	1-Log	2-Log	3-Log	4-Log	5-Log			
12	2					2	0.1	2.5%
14	4					4	0.3	7.3%
16	2	4				6	1.0	21.7%
18	3					3	0.4	9.5%
22		5				5	1.9	42.7%
24	1	1				2	0.7	16.2%
<b>Total</b>	<b>12</b>	<b>10</b>				<b>22</b>	<b>4.5</b>	

**Sawtimber Volume by Timber Type**

Timber Type	# Trees	Volume	Avg BF/Tree	% of Total
Hardwood	112	19.5	174.3	13.9%
Pine	577	121.2	210.0	86.1%
<b>Total</b>	<b>689</b>	<b>140.7</b>	<b>204.2</b>	

**Sawtimber Volume by DBH**

DBH	# Trees	Volume	Avg BF/Tree	% of Total
10	37	1.4	37.9	1.0%
12	151	14.1	93.1	10.0%
14	206	34.8	168.7	24.7%
16	150	37.2	248.2	26.5%
18	85	26.9	316.6	19.1%
20	40	16.3	406.3	11.5%
22	13	6.1	471.4	4.4%
24	4	2.0	505.8	1.4%
26	2	1.1	541.0	0.8%
32	1	0.9	870.0	0.6%
<b>Total</b>	<b>689</b>	<b>140.7</b>	<b>204.2</b>	

**Sawtimber Volume by Species**

Species	# Trees	Volume	Avg BF/Tree	% of Total
Beech	1	0.1	144.0	0.1%
Gum	24	3.3	136.7	2.3%
Hickory	1	0.1	141.0	0.1%
Loblolly Pine	577	121.2	210.0	86.1%
Maple	3	0.2	65.0	0.1%
Poplar	38	7.3	191.6	5.2%
Red Oak	23	3.9	171.7	2.8%
White Oak	22	4.5	205.9	3.2%
<b>Total</b>	<b>689</b>	<b>140.7</b>	<b>204.2</b>	

## Hoover Block E2

### Timber Marketing & Management, Inc.

Professional Forestry Consultants

P.O. Box 396

Chesterfield, VA 23832-0000

Phone: (804) 796-9622 • Fax: (804) 796-9693

Pulpwood Cruise: 10.0%

Sawtimber Cruise: 100.0%

Cruise Date: Tuesday, November 17, 2020

Owner's Name: Hoover

County/State: New Kent County, VA

Acreage: 7+/-

Cruise Type: Tree Count

Harvest Type: Clear Cut

Total BF/Acre: 18,176

Pine Vol/Tree: 218.9

Hardwood Vol/Tree: 218.0

#### Volume Legend:

- 1) Diameters shown in inches (DBH)
- 2) Logs measured in 16' increments
- 3) Sawtimber volumes are shown in thousands of board feet (MBF)
- 4) Volume scale used for each species of sawtimber is noted
- 5) Pulpwood volumes are shown in standard cords (128 cubic feet)

#### Comments:

#### Pulpwood

Standard Cord

DBH	Wood Classification							
	Pine		Soft Hardwood		Hard Hardwood		Cedar	
# Trees	Volume	# Trees	Volume	# Trees	Volume	# Trees	Volume	
6	20	1	40	2	30	1		
8	30	3	10	1	30	2		
10	30	5			10	1		
12	20	5	10	2				
<b>Total</b>	<b>100</b>	<b>14</b>	<b>60</b>	<b>4</b>	<b>70</b>	<b>5</b>		

#### Beech - Sawtimber

International 1/4 Scale

DBH	Number of Logs							
	1-Log	2-Log	3-Log	4-Log	5-Log	# Trees	Volume	% of Total
20	1					1	0.2	100.0%
<b>Total</b>	<b>1</b>					<b>1</b>	<b>0.2</b>	

#### Gum - Sawtimber

International 1/4 Scale

DBH	Number of Logs							
	1-Log	2-Log	3-Log	4-Log	5-Log	# Trees	Volume	% of Total
12	7					7	0.4	4.1%
14	3	10				13	1.7	17.2%
16	2	4	6			12	2.5	26.1%
18	1		4			5	1.5	15.4%
20	1	1	6			8	3.1	31.7%
22			1			1	0.5	5.5%
<b>Total</b>	<b>14</b>	<b>15</b>	<b>17</b>			<b>46</b>	<b>9.6</b>	

#### Hickory - Sawtimber

International 1/4 Scale

DBH	Number of Logs							
	1-Log	2-Log	3-Log	4-Log	5-Log	# Trees	Volume	% of Total
12	2					2	0.1	37.1%
16		1				1	0.2	62.9%
<b>Total</b>	<b>2</b>	<b>1</b>				<b>3</b>	<b>0.3</b>	

#### Loblolly Pine - Sawtimber

International 1/4 Scale

DBH	Number of Logs							
	1-Log	2-Log	3-Log	4-Log	5-Log	# Trees	Volume	% of Total
10	16	10				26	1.2	1.4%
12	11	12	58			81	8.7	10.4%
14	2	17	70	16		105	19.0	22.8%
16		5	57	37		99	26.8	32.2%
18	1	1	28	18		48	17.0	20.4%
20	1	1	9	5		16	6.9	8.3%
22			3	1		4	2.2	2.7%
24			1			1	0.6	0.8%
28			1			1	0.9	1.1%
<b>Total</b>	<b>31</b>	<b>46</b>	<b>227</b>	<b>77</b>		<b>381</b>	<b>83.4</b>	

#### Poplar - Sawtimber

International 1/4 Scale

DBH	Number of Logs							
	1-Log	2-Log	3-Log	4-Log	5-Log	# Trees	Volume	% of Total
12	9					9	0.5	2.1%
14	3	14				17	2.2	9.1%
16		13	17			30	6.8	27.8%
18		6	14			20	6.2	25.3%
20	1	1	8	1		11	4.4	18.1%
22			7			7	3.7	15.1%
24			1			1	0.6	2.6%
<b>Total</b>	<b>13</b>	<b>34</b>	<b>47</b>	<b>1</b>		<b>95</b>	<b>24.5</b>	

#### Red Oak - Sawtimber

International 1/4 Scale

DBH	Number of Logs							
	1-Log	2-Log	3-Log	4-Log	5-Log	# Trees	Volume	% of Total
12	14					14	0.8	9.0%
14	6	5				11	1.2	13.8%
16	4	3				7	1.0	11.7%
18	2	4	1			7	1.6	18.5%
20	2	1				3	0.7	7.7%
22	1	4				5	1.8	20.2%
24		1	1			2	1.1	12.7%
26		1				1	0.6	6.4%
<b>Total</b>	<b>29</b>	<b>19</b>	<b>2</b>			<b>50</b>	<b>8.7</b>	

## Hoover Block E2

### Timber Marketing & Management, Inc.

Cruise Date: Tuesday, November 17, 2020  
 Owner's Name: Hoover  
 County/State: New Kent County, VA

#### River Birch - Sawtimber International 1/4 Scale

Number of Logs								
DBH	1-Log	2-Log	3-Log	4-Log	5-Log	# Trees	Volume	% of Total
12	2					2	0.1	28.7%
14	2					2	0.2	42.6%
16	1					1	0.1	28.7%
Total	5					5	0.4	

#### White Oak - Sawtimber International 1/4 Scale

Number of Logs								
DBH	1-Log	2-Log	3-Log	4-Log	5-Log	# Trees	Volume	% of Total
12	1					1	0.1	100.0%
Total	1					1	0.1	

#### Sawtimber Volume by Timber Type

Timber Type	# Trees	Volume	Avg BF/Tree	% of Total
Hardwood	201	43.8	218.0	34.4%
Pine	381	83.4	218.9	65.6%
Total	582	127.2	218.6	

#### Sawtimber Volume by DBH

DBH	# Trees	Volume	Avg BF/Tree	% of Total
10	26	1.2	44.8	0.9%
12	116	10.6	91.7	8.4%
14	148	24.3	164.1	19.1%
16	150	37.5	249.9	29.5%
18	80	26.3	329.2	20.7%
20	39	15.2	390.6	12.0%
22	17	8.2	483.2	6.5%
24	4	2.4	600.3	1.9%
26	1	0.6	558.0	0.4%
28	1	0.9	904.0	0.7%
Total	582	127.2	218.6	

#### Sawtimber Volume by Species

Species	# Trees	Volume	Avg BF/Tree	% of Total
Beech	1	0.2	181.0	0.1%
Gum	46	9.6	209.7	7.6%
Hickory	3	0.3	100.7	0.2%
Loblolly Pine	381	83.4	218.9	65.6%
Poplar	95	24.5	257.9	19.3%
Red Oak	50	8.7	174.7	6.9%
River Birch	5	0.4	78.0	0.3%
White Oak	1	0.1	56.0	0.0%
Total	582	127.2	218.6	

## Hoover Block E3

### Timber Marketing & Management, Inc.

Professional Forestry Consultants

P.O. Box 396

Chesterfield, VA 23832-0000

Phone: (804) 796-9622 • Fax: (804) 796-9693

Pulpwood Cruise: 10.0%

Sawtimber Cruise: 100.0%

Cruise Date: Wednesday, November 18, 2020  
 Owner's Name: Hoover  
 County/State: New Kent County, VA  
 Acreage: 5+/-  
 Cruise Type: Tree Count  
 Harvest Type: Clear Cut  
 Total BF/Acre: 15,972  
 Pine Vol/Tree: 215.3  
 Hardwood Vol/Tree: 160.8

#### Volume Legend:

- 1) Diameters shown in inches (DBH)
- 2) Logs measured in 16' increments
- 3) Sawtimber volumes are shown in thousands of board feet (MBF)
- 4) Volume scale used for each species of sawtimber is noted
- 5) Pulpwood volumes are shown in standard cords (128 cubic feet)

#### Comments:

#### Pulpwood

Standard Cord

		Wood Classification							
		Pine		Soft Hardwood		Hard Hardwood		Cedar	
DBH	# Trees	Volume	# Trees	Volume	# Trees	Volume	# Trees	Volume	
6			120		5				
8	10	1	50	4	20	2			
10	10	2	20	3					
12	10	3	10	2					
<b>Total</b>	<b>30</b>	<b>5</b>	<b>200</b>	<b>13</b>	<b>20</b>	<b>2</b>			

#### Beech - Sawtimber

International 1/4 Scale

		Number of Logs							
DBH	1-Log	2-Log	3-Log	4-Log	5-Log	# Trees	Volume	% of Total	
22	1					1	0.2	100.0%	
<b>Total</b>	<b>1</b>					<b>1</b>	<b>0.2</b>		

#### Gum - Sawtimber

International 1/4 Scale

		Number of Logs							
DBH	1-Log	2-Log	3-Log	4-Log	5-Log	# Trees	Volume	% of Total	
12	1					1	0.1	28.4%	
14		1				1	0.1	71.6%	
<b>Total</b>	<b>1</b>	<b>1</b>				<b>2</b>	<b>0.2</b>		

#### Loblolly Pine - Sawtimber

International 1/4 Scale

		Number of Logs							
DBH	1-Log	2-Log	3-Log	4-Log	5-Log	# Trees	Volume	% of Total	
10	17	5				22	0.9	1.2%	
12	15	28	32			75	7.3	9.6%	
14	2	24	45	19		90	16.0	21.3%	
16	2	12	55	42		111	29.4	39.0%	
18		3	14	17		34	12.3	16.3%	
20		1	4	7		12	5.6	7.4%	
22			2			2	1.1	1.4%	
24			2	2		4	2.8	3.8%	
<b>Total</b>	<b>36</b>	<b>73</b>	<b>154</b>	<b>87</b>		<b>350</b>	<b>75.4</b>		

#### Maple - Sawtimber

International 1/4 Scale

		Number of Logs							
DBH	1-Log	2-Log	3-Log	4-Log	5-Log	# Trees	Volume	% of Total	
16	1					1	0.1	100.0%	
<b>Total</b>	<b>1</b>					<b>1</b>	<b>0.1</b>		

#### Poplar - Sawtimber

International 1/4 Scale

		Number of Logs							
DBH	1-Log	2-Log	3-Log	4-Log	5-Log	# Trees	Volume	% of Total	
12	3					3	0.2	5.7%	
14		4				4	0.6	19.1%	
16		1	4			5	1.2	41.1%	
18		1	1			2	0.6	19.7%	
20			1			1	0.4	14.4%	
<b>Total</b>	<b>3</b>	<b>6</b>	<b>6</b>			<b>15</b>	<b>3.0</b>		

#### Red Oak - Sawtimber

International 1/4 Scale

		Number of Logs							
DBH	1-Log	2-Log	3-Log	4-Log	5-Log	# Trees	Volume	% of Total	
12	2					2	0.1	16.1%	
16	3					3	0.3	48.3%	
18		1				1	0.2	35.6%	
<b>Total</b>	<b>5</b>	<b>1</b>				<b>6</b>	<b>0.7</b>		

#### White Oak - Sawtimber

International 1/4 Scale

		Number of Logs							
DBH	1-Log	2-Log	3-Log	4-Log	5-Log	# Trees	Volume	% of Total	
12	1					1	0.1	17.5%	
14	1					1	0.1	25.9%	
20	1					1	0.2	56.6%	
<b>Total</b>	<b>3</b>					<b>3</b>	<b>0.3</b>		

---

## Hoover Block E3

---

Timber Marketing & Management, Inc.

Cruise Date: Wednesday, November 18, 2020  
Owner's Name: Hoover  
County/State: New Kent County, VA

### Sawtimber Volume by Timber Type

<u>Timber Type</u>	<u># Trees</u>	<u>Volume</u>	<u>Avg BF/Tree</u>	<u>% of Total</u>
Hardwood	28	4.5	160.8	5.6%
Pine	350	75.4	215.3	94.4%
Total	378	79.9	211.3	

### Sawtimber Volume by DBH

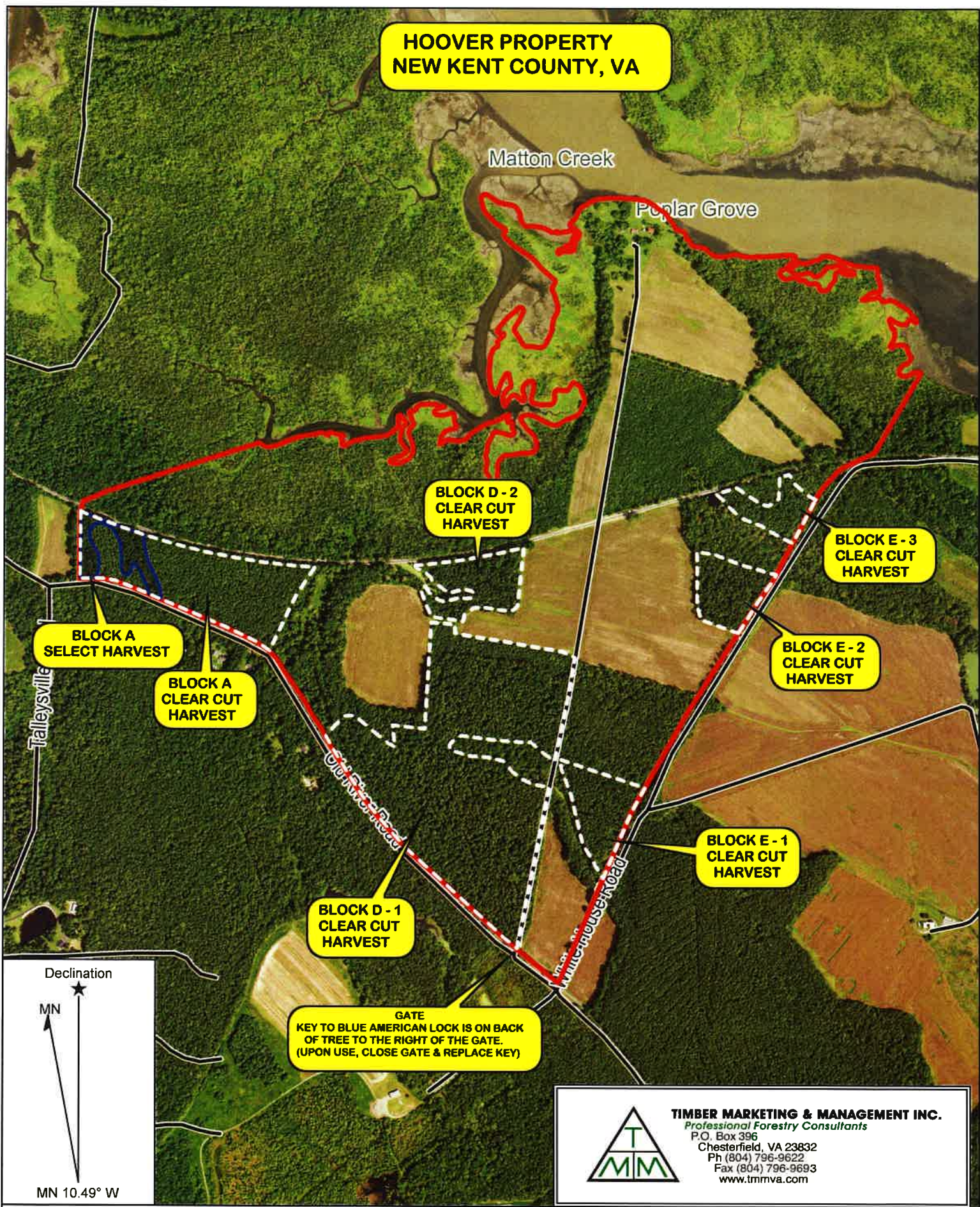
<u>DBH</u>	<u># Trees</u>	<u>Volume</u>	<u>Avg BF/Tree</u>	<u>% of Total</u>
10	22	0.9	41.2	1.1%
12	82	7.6	93.3	9.6%
14	96	16.8	175.1	21.1%
16	120	31.1	258.8	38.9%
18	37	13.1	354.4	16.4%
20	14	6.2	443.9	7.8%
22	3	1.3	425.7	1.6%
24	4	2.8	708.5	3.5%
Total	378	79.9	211.3	

### Sawtimber Volume by Species

<u>Species</u>	<u># Trees</u>	<u>Volume</u>	<u>Avg BF/Tree</u>	<u>% of Total</u>
Beech	1	0.2	221.0	0.3%
Gum	2	0.2	98.5	0.2%
Loblolly Pine	350	75.4	215.3	94.4%
Maple	1	0.1	112.0	0.1%
Poplar	15	3.0	197.1	3.7%
Red Oak	6	0.7	116.0	0.9%
White Oak	3	0.3	106.7	0.4%
Total	378	79.9	211.3	



**HOOVER PROPERTY  
NEW KENT COUNTY, VA**



**GATE**  
KEY TO BLUE AMERICAN LOCK IS ON BACK  
OF TREE TO THE RIGHT OF THE GATE.  
(UPON USE, CLOSE GATE & REPLACE KEY)

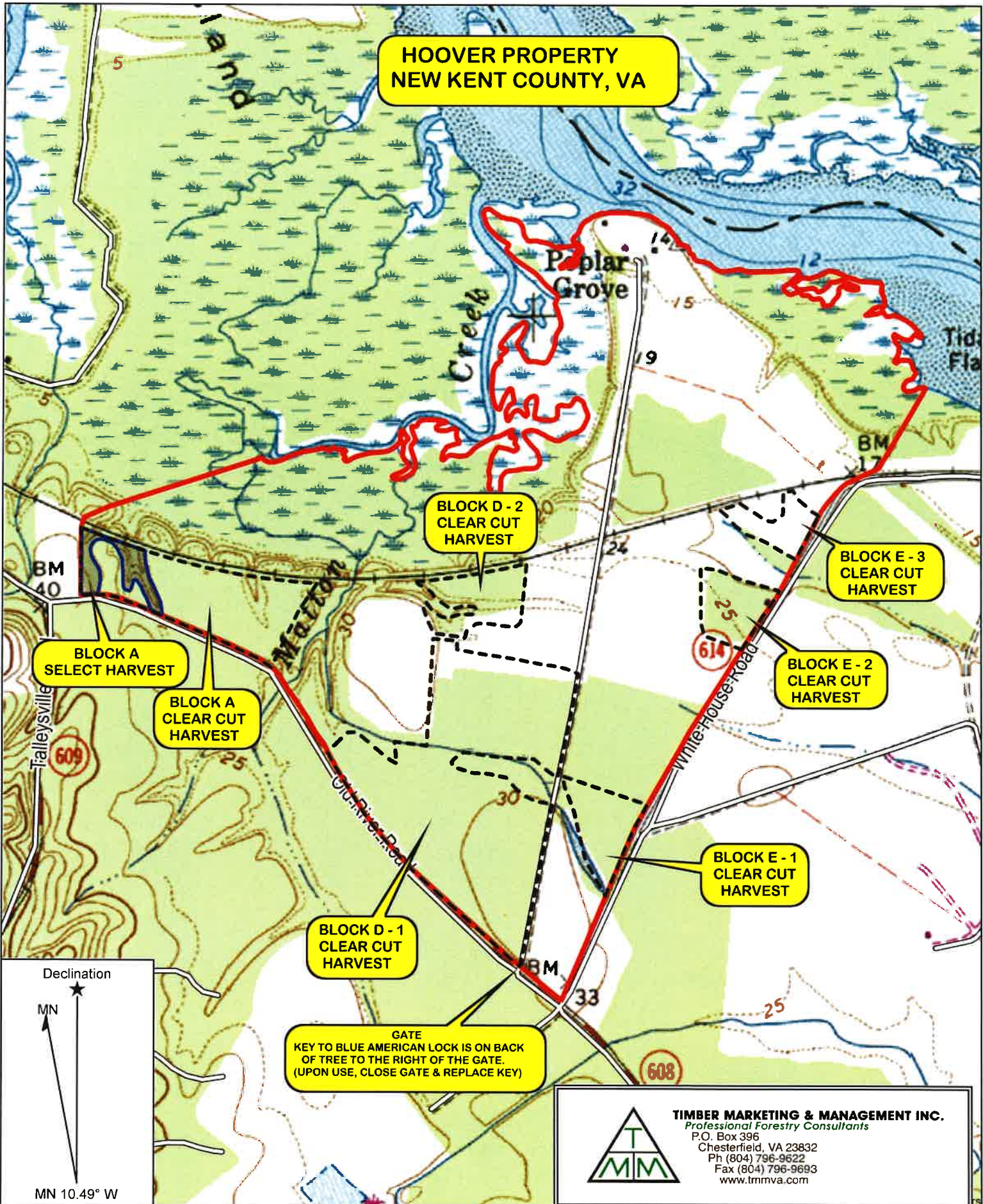


**TIMBER MARKETING & MANAGEMENT INC.**  
*Professional Forestry Consultants*  
P.O. Box 396  
Chesterfield, VA 23832  
Ph (804) 796-9622  
Fax (804) 796-9693  
www.tmmva.com

Name: Hoover Property  
Date: 11/20/20  
Scale: 1 inch = 1,000 ft.

Location: New Kent County, VA

**HOOVER PROPERTY  
NEW KENT COUNTY, VA**



**GATE**  
KEY TO BLUE AMERICAN LOCK IS ON BACK  
OF TREE TO THE RIGHT OF THE GATE.  
(UPON USE, CLOSE GATE & REPLACE KEY)

Declination

MN

MN 10.49° W

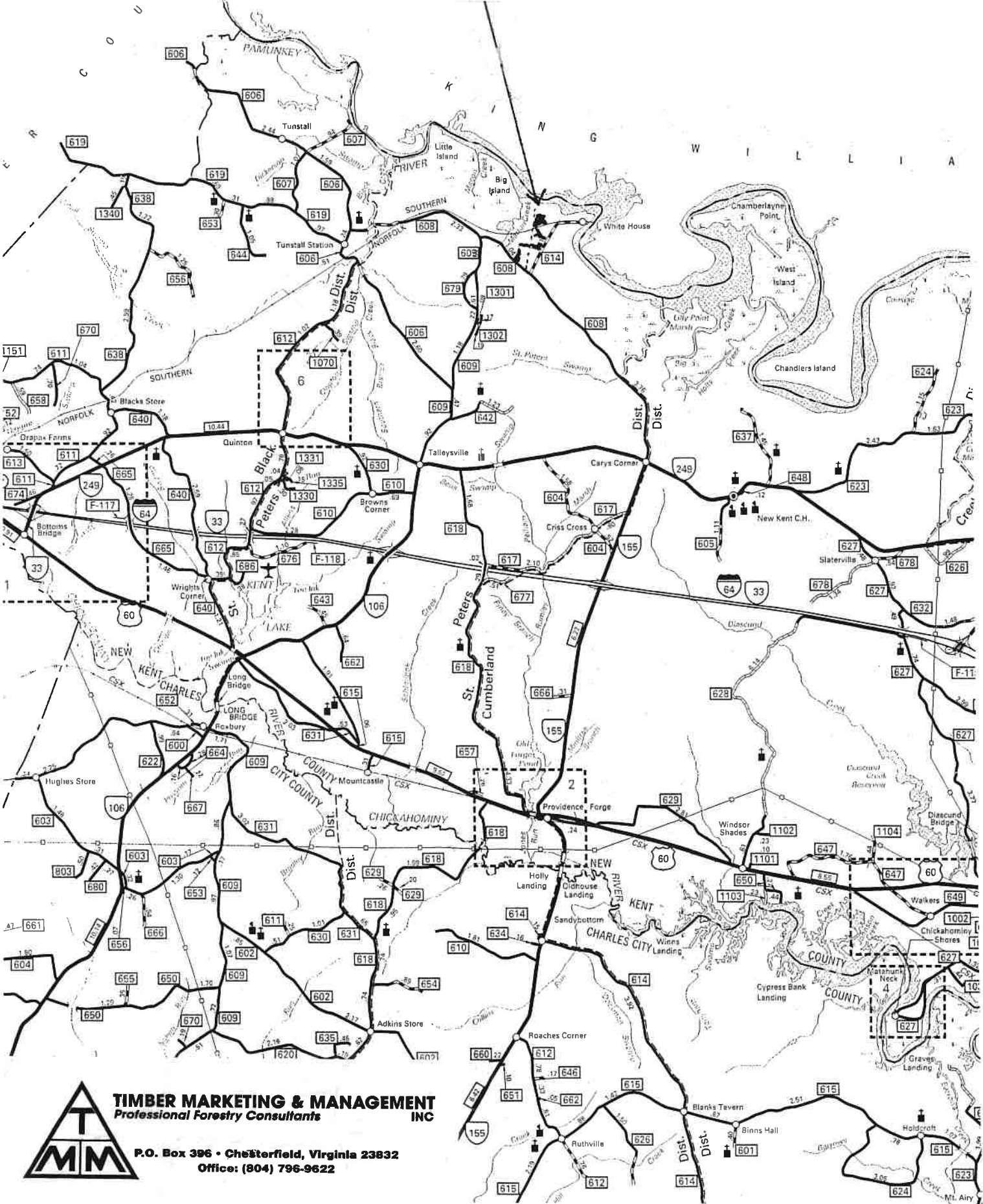


**TIMBER MARKETING & MANAGEMENT INC.**  
*Professional Forestry Consultants*  
P.O. Box 396  
Chesterfield, VA 23832  
Ph (804) 796-9622  
Fax (804) 796-9693  
www.tmmva.com

Name: Hoover Property  
Date: 11/20/20  
Scale: 1 inch = 1,000 ft.

Location: New Kent County, VA

# HOOVER PROPERTY (Poplar Grove Tract) New Kent County, Virginia



**TIMBER MARKETING & MANAGEMENT INC**  
Professional Forestry Consultants

P.O. Box 396 • Chesterfield, Virginia 23832  
Office: (804) 796-9622