**TIMBER MARKETING & MANAGEMENT INC.***Professional Forestry Consultants*

P.O. Box 396  
 Chesterfield, VA 23832  
 Ph (804) 796-9622  
 Fax (804) 796-9693  
 www.tmmva.com

Sale Date:	<b>June 3, 2021</b>
Time:	<b>11:00 a.m.</b>
Day:	<b>Thursday</b>
Total Vol./Acre:	<b>4,644 B. F.</b>
Pine Vol/Tree:	<b>314 B. F.</b>
Hwd. Vol/Tree:	<b>356 B. F.</b>

**SELECT CUT SALE  
 EXCELLENT ACCESS**

Having been employed by **Brenda Hubbard, Bruce Hubbard, Diann Holt and Denise Shreckhise** we solicit bids on the **blue marked timber** only on **119 +/- acres** in **Powhatan County, Virginia** and as shown on the attached map.

We have made a 100% tree count of the sawtimber-size trees. Our estimate of their volume is:

**Sawtimber**

White Oak	212,700	Hickory	19,000
Poplar	138,500	Gum	14,400
Red Oak	49,900	Virginia Pine	5,000
Northern Red Oak	41,700	Maple	2,200
Loblolly Pine	41,800	Misc. Hardwood	<u>800</u>
Chestnut Oak	26,700	<b>Total: 552,700 BF Int 1/4" Scale</b>	

The above volumes are not guaranteed; however, care was taken in the field to assemble the above tables. You should note how your utilization practices may vary from the above and make any necessary adjustments.

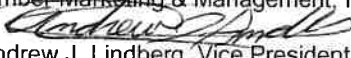
**Conditions**

1. A period of time of **24 months** will be allowed to cut and remove the timber.
2. Roads **must** be maintained and restored to their original condition upon completion of the logging. Any newly constructed roads and decks must be left in a graded condition and must be seeded upon completion of logging. Any newly constructed haul roads, skid roads and log decks and all logging operations must be in accordance with the guidelines set out in the **Best Management Practices Manual** of the Virginia Department of Forestry.
3. No tops or laps will be allowed to remain in the streams, fields, buffers or over cutting boundaries. They must be pulled back immediately.
4. Only the blue marked trees are to be cut from Streamside Management Zones.
5. No logging will be permitted during excessively wet weather conditions as determined by Timber Marketing & Management, Inc. If logging is halted due to weather conditions, then an extension of time equal to the time lost will be granted.
6. A \$3,000.00 performance bond will be paid at closing and held by Timber Marketing & Management, Inc. to insure compliance with all BMP requirements, road maintenance and conditions of the Timber Purchase Contract.

Only sealed bids will be accepted and owners reserve the right to reject any or all bids. **BIDS SHOULD BE SUBMITTED PRIOR TO THE TIME OF BID OPENING AND CAN BE SUBMITTED VIA:** Mail to: Timber Marketing & Management, Inc. P. O. Box 396, Chesterfield, Virginia 23832 **OR** hand delivered to 9520 Ironbridge Road, Chesterfield, Virginia **OR** telephoned in to 804-796-9622 **OR** faxed to 804-796-9693 **OR** emailed to tmm4u@aol.com Bids must be made on a lump-sum basis and must be received at this address no later than the posted bid date and time as shown on the cover. Closing shall take place within 30 days of bid acceptance.

There will be no scheduled show trip of the tract; however, you may call and set an appointment or you may inspect the property at your own leisure. An electronic copy of this sale notice, including maps and volumes, is available for download and viewing on our website at www.tmmva.com under the Timber Sale Notices section.

Sincerely,  
 Timber Marketing & Management, Inc.

  
 Andrew J. Lindberg, Vice President, Area Manager  
 804-338-8436 Mobile  
 804-796-9622 Office

## Hubbard Tract

### Timber Marketing & Management, Inc.

Professional Forestry Consultants

P.O. Box 396

Chesterfield, VA 23832-0000

Phone: (804) 796-9622 • Fax: (804) 796-9693

Sawtimber Cruise: 100.0%

Cruise Date: Tuesday, May 11, 2021  
 Owner's Name: Hubbard  
 County/State: Powhatan County, VA  
 Acreage: 119+/-  
 Cruise Type: Tree Count  
 Harvest Type: Select Cut  
 Total BF/Acre: 4,644  
 Pine Vol/Tree: 313.9  
 Hardwood Vol/Tree: 355.5

#### Volume Legend:

- 1) Diameters shown in inches (DBH)
- 2) Logs measured in 16' increments
- 3) Sawtimber volumes are shown in thousands of board feet (MBF)
- 4) Volume scale used for each species of sawtimber is noted
- 5) Pulpwood volumes are shown in standard cords (128 cubic feet)

#### Comments:

#### Chestnut Oak - Sawtimber International 1/4 Scale

Number of Logs								
DBH	1-Log	2-Log	3-Log	4-Log	5-Log	# Trees	Volume	% of Total
16	1	5	3			9	1.8	6.8%
18		14	5			19	5.2	19.3%
20		8	9			17	6.4	23.8%
22	1	9	6			16	6.9	25.7%
24		7	3			10	5.2	19.5%
26		1				1	0.6	2.1%
30		1				1	0.8	2.8%
<b>Total</b>	<b>2</b>	<b>45</b>	<b>26</b>			<b>73</b>	<b>26.7</b>	

#### Gum - Sawtimber International 1/4 Scale

Number of Logs								
DBH	1-Log	2-Log	3-Log	4-Log	5-Log	# Trees	Volume	% of Total
16		4	8			12	2.8	19.5%
18		8	10			18	5.3	37.1%
20		1	7			8	3.3	22.9%
22		1	4			5	2.5	17.3%
24		1				1	0.5	3.3%
<b>Total</b>		<b>15</b>	<b>29</b>			<b>44</b>	<b>14.4</b>	

#### Hickory - Sawtimber International 1/4 Scale

Number of Logs								
DBH	1-Log	2-Log	3-Log	4-Log	5-Log	# Trees	Volume	% of Total
16		9				9	1.7	9.0%
18	2	14				16	3.8	19.8%
20	1	11	7			19	6.6	34.9%
22		8	1			9	3.6	19.1%
24	1	5	1			7	3.3	17.2%
<b>Total</b>	<b>4</b>	<b>47</b>	<b>9</b>			<b>60</b>	<b>19.0</b>	

#### Loblolly Pine - Sawtimber International 1/4 Scale

Number of Logs								
DBH	1-Log	2-Log	3-Log	4-Log	5-Log	# Trees	Volume	% of Total
12		5	1			6	0.6	1.4%
14		4	12	1		17	3.0	7.2%
16		1	16	4		21	5.5	13.2%
18			13	9		22	8.0	19.1%
20	1	3	14	6		24	10.2	24.3%
22	3	1	12	1		17	8.0	19.2%
24		1	7			8	5.0	11.9%
26			2			2	1.5	3.7%
<b>Total</b>	<b>4</b>	<b>15</b>	<b>77</b>	<b>21</b>		<b>117</b>	<b>41.8</b>	

#### Maple - Sawtimber International 1/4 Scale

Number of Logs								
DBH	1-Log	2-Log	3-Log	4-Log	5-Log	# Trees	Volume	% of Total
16		1				1	0.2	8.7%
18	2	1				3	0.5	24.5%
20	2	2				4	1.0	45.3%
24		1				1	0.5	21.5%
<b>Total</b>	<b>4</b>	<b>5</b>				<b>9</b>	<b>2.2</b>	

#### Miscellaneous Hardwood - Sawtimber International 1/4 Scale

Number of Logs								
DBH	1-Log	2-Log	3-Log	4-Log	5-Log	# Trees	Volume	% of Total
20		1				1	0.3	40.1%
24		1				1	0.5	59.9%
<b>Total</b>		<b>2</b>				<b>2</b>	<b>0.8</b>	

#### Northern Red Oak - Sawtimber International 1/4 Scale

Number of Logs								
DBH	1-Log	2-Log	3-Log	4-Log	5-Log	# Trees	Volume	% of Total
16		3	1			4	0.8	2.0%
18	2	17	4			23	5.8	14.0%
20	2	22	6			30	9.8	23.6%
22	2	22	6			30	12.1	29.1%
24		9	5			14	7.4	17.9%
26		2	3			5	3.4	8.2%
30			1			1	1.1	2.5%
36		1				1	1.1	2.7%
<b>Total</b>	<b>6</b>	<b>76</b>	<b>26</b>			<b>108</b>	<b>41.7</b>	

**Hubbard Tract**

**Timber Marketing & Management, Inc.**

Cruise Date: Tuesday, May 11, 2021  
 Owner's Name: Hubbard  
 County/State: Powhatan County, VA

**Poplar - Sawtimber** International 1/4 Scale

Number of Logs								
DBH	1-Log	2-Log	3-Log	4-Log	5-Log	# Trees	Volume	% of Total
14	1					1	0.1	0.1%
16		8	24			32	7.7	5.5%
18		11	63	6		80	26.3	19.0%
20		13	55	11		79	33.2	24.0%
22		5	44	7		56	29.6	21.4%
24		3	24	5		32	20.7	15.0%
26		1	12	1		14	10.7	7.7%
28	1		5	1		7	6.0	4.3%
30			4			4	4.2	3.0%
<b>Total</b>	<b>2</b>	<b>41</b>	<b>231</b>	<b>31</b>		<b>305</b>	<b>138.5</b>	

**White Oak - Sawtimber** International 1/4 Scale

Number of Logs								
DBH	1-Log	2-Log	3-Log	4-Log	5-Log	# Trees	Volume	% of Total
14		2				2	0.3	0.1%
16	4	84	13			101	19.7	9.3%
18	12	176	51			239	62.5	29.4%
20	8	132	66			206	71.1	33.4%
22	1	67	25			93	39.4	18.5%
24	1	14	9			24	12.6	5.9%
26		7				7	3.9	1.8%
28		1	2			3	2.5	1.2%
30		1				1	0.8	0.4%
<b>Total</b>	<b>26</b>	<b>484</b>	<b>166</b>			<b>676</b>	<b>212.7</b>	

**Red Oak - Sawtimber** International 1/4 Scale

Number of Logs								
DBH	1-Log	2-Log	3-Log	4-Log	5-Log	# Trees	Volume	% of Total
16	1	14	3			18	3.5	7.1%
18	3	31	10			44	11.5	23.0%
20	3	34	9			46	15.1	30.2%
22	1	16	8			25	10.6	21.3%
24		3	3			6	3.3	6.7%
26		3	1			4	2.4	4.9%
30		1				1	0.8	1.5%
32		1				1	0.9	1.7%
38			1			1	1.8	3.6%
<b>Total</b>	<b>8</b>	<b>103</b>	<b>35</b>			<b>146</b>	<b>49.9</b>	

**Virginia Pine - Sawtimber** International 1/4 Scale

Number of Logs								
DBH	1-Log	2-Log	3-Log	4-Log	5-Log	# Trees	Volume	% of Total
12	1	8				9	0.8	15.9%
14		7	9			16	2.7	53.5%
16		4	2			6	1.3	25.6%
18		1				1	0.2	5.0%
<b>Total</b>	<b>1</b>	<b>20</b>	<b>11</b>			<b>32</b>	<b>5.0</b>	

---

## Hubbard Tract

---

### Timber Marketing & Management, Inc.

Cruise Date: Tuesday, May 11, 2021  
Owner's Name: Hubbard  
County/State: Powhatan County, VA

#### Sawtimber Volume by Timber Type

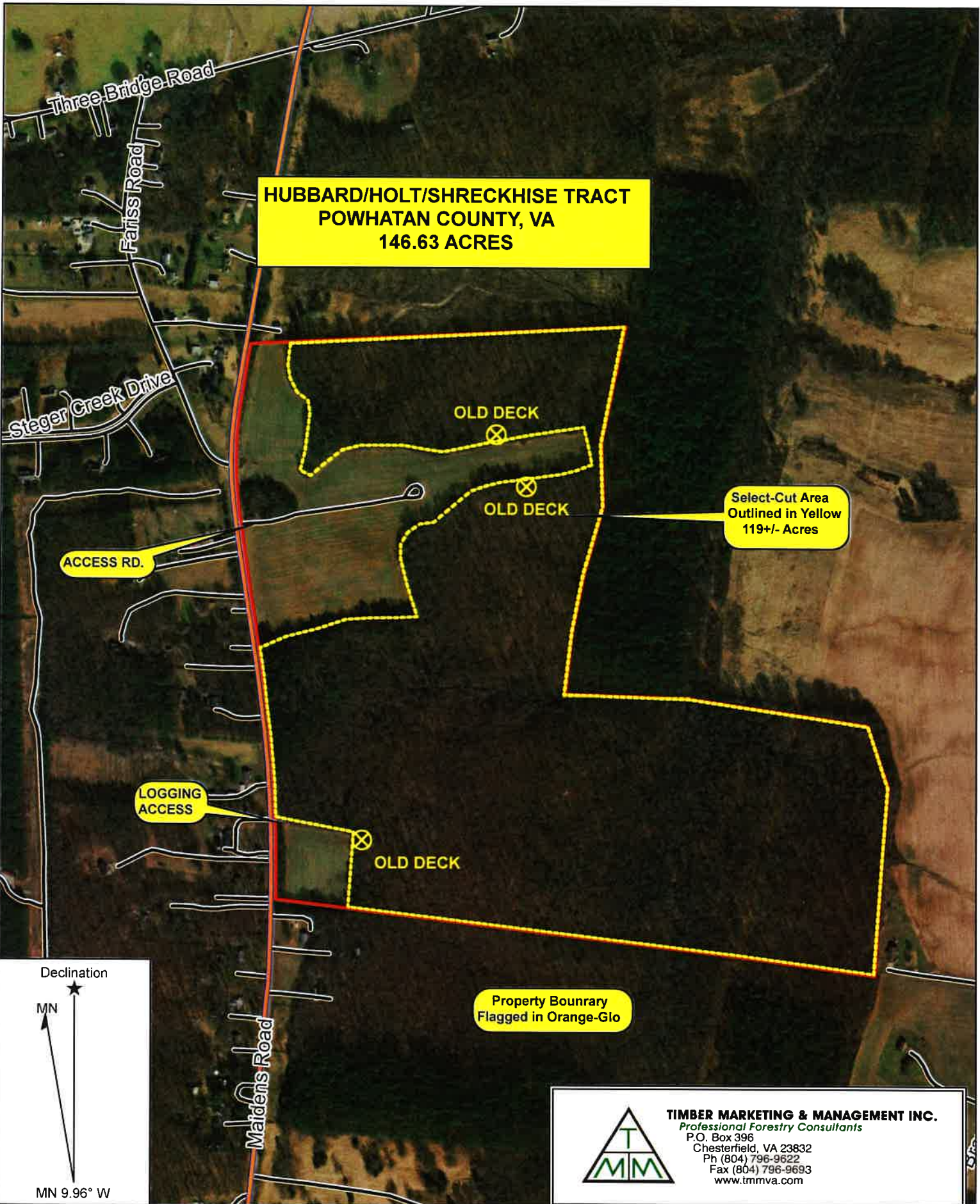
<u>Timber Type</u>	<u># Trees</u>	<u>Volume</u>	<u>Avg BF/Tree</u>	<u>% of Total</u>
Hardwood	1,423	505.9	355.5	91.5%
Pine	149	46.8	313.9	8.5%
Total	1,572	552.6	351.5	

#### Sawtimber Volume by DBH

<u>DBH</u>	<u># Trees</u>	<u>Volume</u>	<u>Avg BF/Tree</u>	<u>% of Total</u>
12	15	1.4	91.5	0.2%
14	36	6.0	167.7	1.1%
16	213	45.1	211.7	8.2%
18	465	129.2	277.8	23.4%
20	434	156.9	361.6	28.4%
22	251	112.8	449.3	20.4%
24	104	59.0	567.2	10.7%
26	33	22.5	683.3	4.1%
28	10	8.4	844.5	1.5%
30	8	7.5	940.5	1.4%
32	1	0.9	870.0	0.2%
36	1	1.1	1,121.0	0.2%
38	1	1.8	1,772.0	0.3%
Total	1,572	552.6	351.5	

#### Sawtimber Volume by Species

<u>Species</u>	<u># Trees</u>	<u>Volume</u>	<u>Avg BF/Tree</u>	<u>% of Total</u>
Chestnut Oak	73	26.7	366.3	4.8%
Gum	44	14.4	327.8	2.6%
Hickory	60	19.0	316.2	3.4%
Loblolly Pine	117	41.8	357.2	7.6%
Maple	9	2.2	242.8	0.4%
Miscellaneous Hardwood	2	0.8	391.5	0.1%
Northern Red Oak	108	41.7	385.7	7.5%
Poplar	305	138.5	454.1	25.1%
Red Oak	146	49.9	341.8	9.0%
Virginia Pine	32	5.0	155.4	0.9%
White Oak	676	212.7	314.7	38.5%
Total	1,572	552.6	351.5	



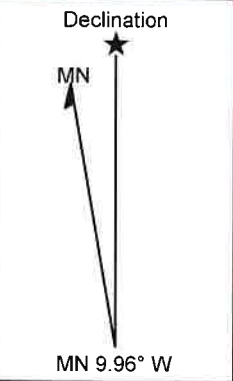
**HUBBARD/HOLT/SHRECKHISE TRACT  
POWHATAN COUNTY, VA  
146.63 ACRES**

Select-Cut Area  
Outlined in Yellow  
119+/- Acres

ACCESS RD.

LOGGING  
ACCESS

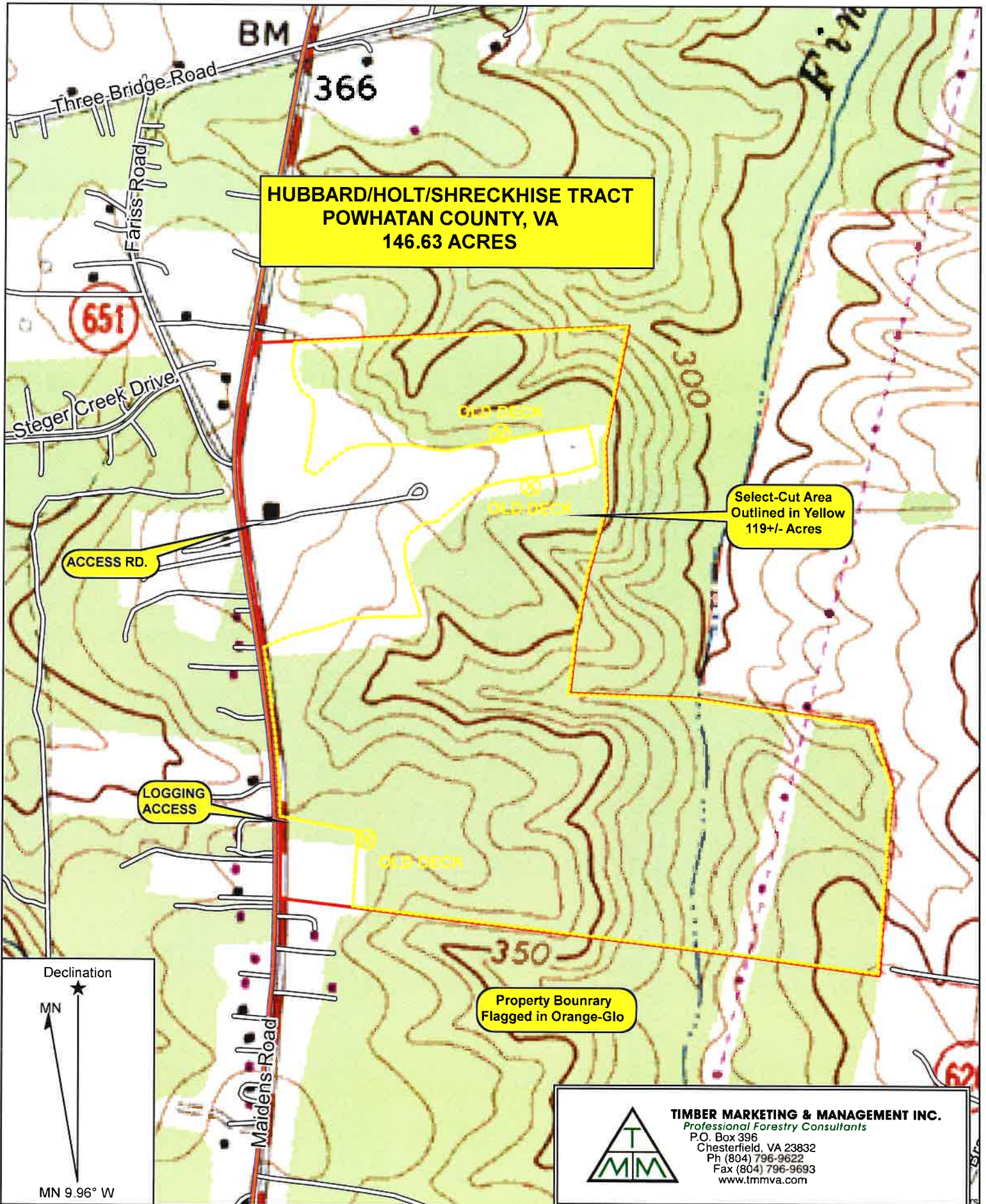
Property Bounary  
Flagged in Orange-Glo



**TIMBER MARKETING & MANAGEMENT INC.**  
Professional Forestry Consultants  
P.O. Box 396  
Chesterfield, VA 23832  
Ph (804) 796-9622  
Fax (804) 796-9693  
www.tmmva.com

Name: HUBBARD/HOLT/SHRECKHISE  
Date: 05/13/21  
Scale: 1 inch = 600 ft.

Location: 037° 34' 00.1585" N, 077° 56' 13.0093" W  
119+/- ACRE SELECT-CUT



**HUBBARD/HOLT/SHRECKHISE TRACT  
POWHATAN COUNTY, VA  
146.63 ACRES**

Select-Cut Area  
Outlined in Yellow  
119+/- Acres

Property Bounary  
Flagged in Orange-Glo

ACCESS RD.

LOGGING  
ACCESS

OLD DECK

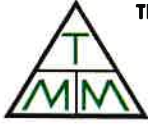
OLD DECK

OLD DECK

Declination

MN

MN 9.96° W



**TIMBER MARKETING & MANAGEMENT INC.**  
Professional Forestry Consultants  
P.O. Box 396  
Chesterfield, VA 23832  
Ph (804) 796-9622  
Fax (804) 796-9693  
www.tmmva.com

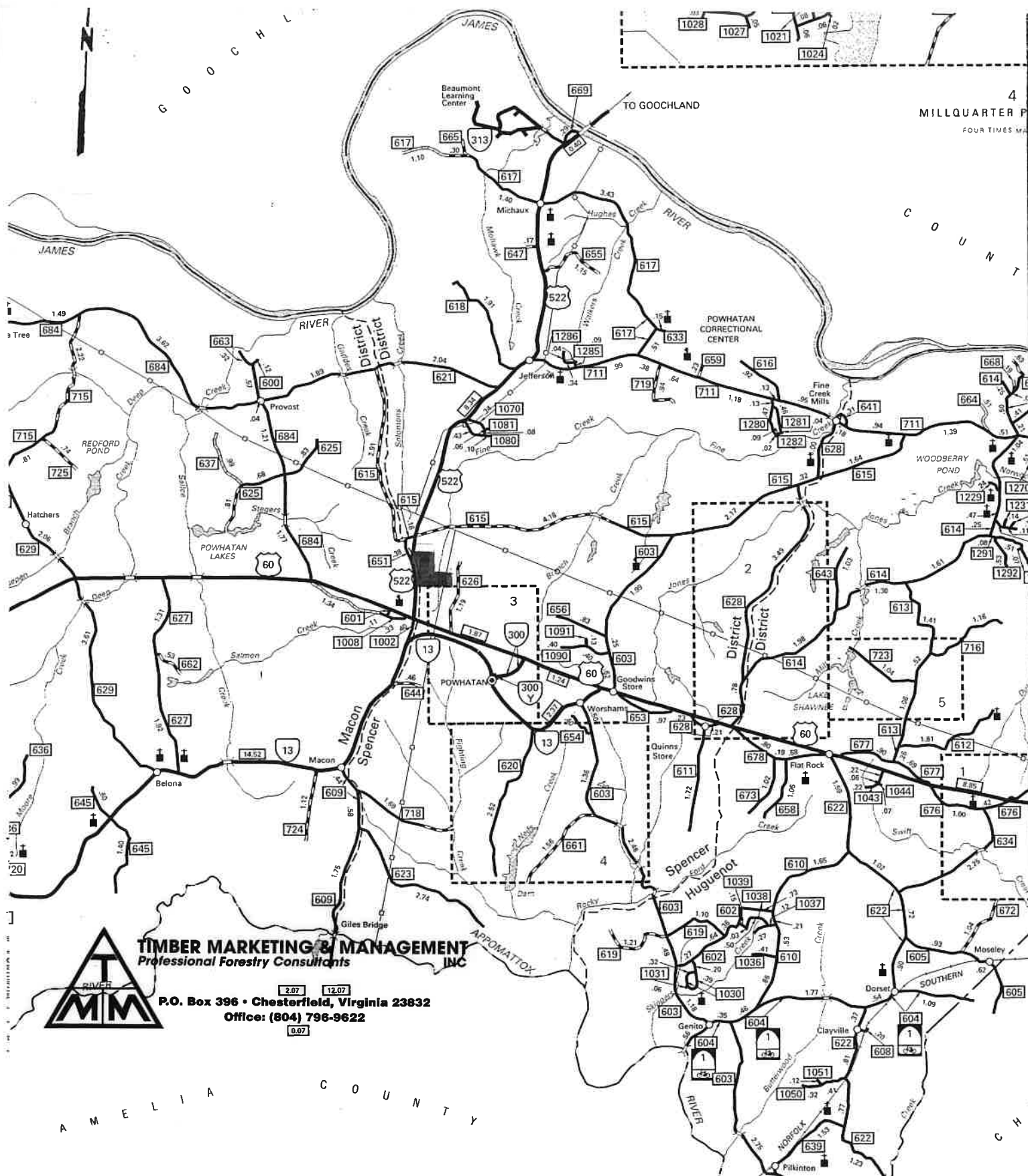
Name: HUBBARD/HOLT/SHRECKHISE  
Date: 05/13/21  
Scale: 1 inch = 600 ft.

Location: 037° 34' 00.1585" N, 077° 56' 13.0093" W  
119+/- ACRE SELECT-CUT

# HUBBARD / SHRECKHISE / HOLT TRACT

## Powhatan County, Virginia

### 119 +/- Acres



**TIMBER MARKETING & MANAGEMENT**  
*Professional Forestry Consultants*  
**INC**

P.O. Box 396 • Chesterfield, Virginia 23832  
 Office: (804) 796-9622

A M E L I A C O U N T Y