

TIMBER MARKETING & MANAGEMENT INC.
 Professional Forestry Consultants
 P.O. Box 396
 Chesterfield, VA 23832
 Ph (804) 796-9622
 Fax (804) 796-9693
 www.tmmva.com

Sale Date:	July 18, 2019
Time:	11:00 a.m.
Day:	Thursday
Total Vol./Acre:	19,239 B. F.
Pine Vol/Tree:	201 B. F.
Hdwd. Vol/Tree:	149 B. F.

CLEAR- CUT SALE WELL STOCKED STAND

Having been employed by **Randolph Irby** we solicit bids on all merchantable timber on **53 +/- acres** shown as the clear cut area and on blue marked timber only on **8 +/- acres** shown as the select cut area in **Nottoway County, Virginia** and as shown on the attached map.

We made a 4% plot cruise of the pulpwood trees to be harvested in Block A. Our estimate of their volume is:

<u>Pulpwood</u>	<u>Cords</u>	<u>Tons</u>
Pine	64	166
Soft Hardwood	180	468
Hard Hardwood	<u>27</u>	<u>70</u>
Total:	271	705

We have made a 100% tree count of the sawtimber-size trees to be harvested in Block A and Block B. Our estimate of their volume is:

<u>Sawtimber</u>	<u>Block A</u>	<u>Block B</u>	<u>Total</u>
Gum	4,700	400	5,100
Hickory	2,000	800	2,800
Loblolly Pine	967,400	22,700	990,100
Maple	600	0	600
Misc. Hardwood	1,000	0	1,000
Poplar	11,800	6,400	18,200
Red Oak	5,300	2,700	8,000
White Oak	<u>7,700</u>	<u>1,700</u>	<u>9,400</u>
	1,000,500	34,700	1,035,200 Total BF Int 1/4" Scale

The above volumes are not guaranteed; however, care was taken in the field to assemble the above tables. You should note how your utilization practices may vary from the above and make any necessary adjustments.

Conditions

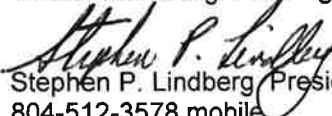
1. The landowner assumes responsibility for compliance with the Virginia State Seed Tree Law.
2. A period of time of 24 months will be allowed to cut and remove the timber.
3. Roads **must** be maintained and restored to their original condition upon completion of the logging. Any newly constructed roads and decks must be left in a graded condition and must be seeded upon completion of logging. Any newly constructed haul roads, skid roads and log decks and all logging operations must be in accordance with the guidelines set out in the **Best Management Practices Manual** of the Virginia Department of Forestry.
4. No tops or laps will be allowed to remain in the streams, fields, buffers or over cutting boundaries. They must be pulled back immediately.
5. Only the blue marked trees are to be cut from Streamside Management Zones.
6. No logging will be permitted during excessively wet weather conditions as determined by Timber Marketing & Management, Inc. If logging is halted due to weather conditions, then an extension of time equal to the time lost will be granted.
7. A \$2,000.00 performance bond will be paid at closing and held by Timber Marketing & Management, Inc. to insure compliance with all BMP requirements, road maintenance and conditions of the Timber Purchase Contract.

Only sealed bids will be accepted and owners reserve the right to reject any or all bids. BIDS SHOULD BE SUBMITTED PRIOR TO THE TIME OF BID OPENING AND CAN BE SUBMITTED VIA: Mail to: Timber Marketing & Management, Inc. P. O. Box 396, Chesterfield, Virginia 23832 **OR** hand delivered to 9520 Ironbridge Road, Chesterfield, Virginia **OR** telephoned in to 804-796-9622 **OR** faxed to 804-796-9693 **OR** emailed to tmm4u@aol.com Bids must be made on a **combination of Blocks A and B** and on a lump-sum basis and must be received at this address no later than the posted bid date and time as shown on the cover. Closing shall take place within 30 days of bid acceptance.

There will be no scheduled show trip of the tract; however, you may call and set an appointment or you may inspect the property at your own leisure.

An electronic copy of this sale notice, including maps and volumes, is available for download and viewing on our website at www.tmmva.com under the Timber Sale Notices section.

Sincerely,
Timber Marketing & Management, Inc.


Stephen P. Lindberg, President
804-512-3578 mobile
804-796-9622 office

Irby Block A

Timber Marketing & Management, Inc.

Professional Forestry Consultants

P.O. Box 396

Chesterfield, VA 23832-0000

Phone: (804) 796-9622 • Fax: (804) 796-9693

Pulpwood Cruise: 4.0%

Sawtimber Cruise: 100.0%

Cruise Date: Tuesday, May 21, 2019

Owner's Name: Randolph Irby

County/State: Nottoway County, VA

Acreage: 52+/-

Cruise Type: Tree Count

Harvest Type: Clear Cut

Total BF/Acre: 19,239

Pine Vol/Tree: 201.0

Hardwood Vol/Tree: 148.6

Volume Legend:

- 1) Diameters shown in inches (DBH)
- 2) Logs measured in 16' increments
- 3) Sawtimber volumes are shown in thousands of board feet (MBF)
- 4) Volume scale used for each species of sawtimber is noted
- 5) Pulpwood volumes are shown in standard cords (128 cubic feet)

Comments:

Loblolly Pine

Standard Cord

Wood Classification								
Pine			Soft Hardwood		Hard Hardwood		Cedar	
DBH	# Trees	Volume	# Trees	Volume	# Trees	Volume	# Trees	Volume
6	50	2	1,275	50	350	14		
8	25	3	600	47	125	10		
10	275	46	400	53	25	3		
12	50	13	150	30				
Total	400	64	2,425	180	500	27		

Gum - Sawtimber

International 1/4 Scale

Number of Logs								
DBH	1-Log	2-Log	3-Log	4-Log	5-Log	# Trees	Volume	% of Total
12	9					9	0.5	10.7%
14	8	9				17	1.9	40.9%
16	1	3	2			6	1.2	25.2%
18			2			2	0.7	14.2%
20			1			1	0.4	9.0%
Total	18	12	5			35	4.7	

Hickory - Sawtimber

International 1/4 Scale

Number of Logs								
DBH	1-Log	2-Log	3-Log	4-Log	5-Log	# Trees	Volume	% of Total
12	4					4	0.2	11.1%
14	1	2				3	0.4	18.1%
16	3	2				5	0.7	35.4%
18		1				1	0.2	12.3%
24		1				1	0.5	23.2%
Total	8	6				14	2.0	

Loblolly Pine - Sawtimber

International 1/4 Scale

Number of Logs								
DBH	1-Log	2-Log	3-Log	4-Log	5-Log	# Trees	Volume	% of Total
10	232	46				278	11.1	1.1%
12	134	448	659			1,241	127.8	13.2%
14	50	301	1,107	99		1,557	273.9	28.3%
16	16	137	657	165		975	246.3	25.5%
18	1	54	243	192	27	517	183.7	19.0%
20		15	58	90	21	184	87.7	9.1%
22		3	20	25	3	51	29.9	3.1%
24			1	5	1	7	5.4	0.6%
26			1	1		2	1.7	0.2%
Total	433	1,004	2,746	577	52	4,812	967.4	

Maple - Sawtimber

International 1/4 Scale

Number of Logs								
DBH	1-Log	2-Log	3-Log	4-Log	5-Log	# Trees	Volume	% of Total
18		1				1	0.2	44.1%
20		1				1	0.3	55.9%
Total		2				2	0.6	

Miscellaneous Hardwood - Sawtimber

International 1/4 Scale

Number of Logs								
DBH	1-Log	2-Log	3-Log	4-Log	5-Log	# Trees	Volume	% of Total
12	6					6	0.3	34.7%
14	2	1				3	0.3	31.7%
18	1					1	0.1	14.9%
20	1					1	0.2	18.7%
Total	10	1				11	1.0	

Poplar - Sawtimber

International 1/4 Scale

Number of Logs								
DBH	1-Log	2-Log	3-Log	4-Log	5-Log	# Trees	Volume	% of Total
12	47					47	2.6	22.3%
14	11	18	1			30	3.6	30.8%
16		13	1			14	2.7	23.1%
18	1	3				4	0.9	7.5%
20			2			2	0.9	7.2%
22			2			2	1.1	9.0%
Total	59	34	6			99	11.8	

Irby Block A

Timber Marketing & Management, Inc.

Cruise Date: Tuesday, May 21, 2019
 Owner's Name: Randolph Irby
 County/State: Nottoway County, VA

Red Oak - Sawtimber International 1/4 Scale

DBH	Number of Logs					# Trees	Volume	% of Total
	1-Log	2-Log	3-Log	4-Log	5-Log			
12	3					3	0.2	3.2%
14	1	3				4	0.5	9.6%
16		4				4	0.8	14.5%
18		6				6	1.5	28.3%
22		2	1			3	1.3	24.8%
24		1				1	0.5	8.9%
26		1				1	0.6	10.6%
Total	4	17	1			22	5.3	

White Oak - Sawtimber International 1/4 Scale

DBH	Number of Logs					# Trees	Volume	% of Total
	1-Log	2-Log	3-Log	4-Log	5-Log			
12	11					11	0.6	8.0%
14	3	4				7	0.8	10.6%
16	3	4				7	1.1	14.3%
18	1	2				3	0.6	8.4%
20		4				4	1.3	16.4%
22		5				5	1.9	25.3%
24			1			1	0.6	8.4%
28		1				1	0.7	8.5%
Total	18	20	1			39	7.7	

Sawtimber Volume by Timber Type

Timber Type	# Trees	Volume	Avg BF/Tree	% of Total
Hardwood	222	33.0	148.6	3.3%
Pine	4,812	967.4	201.0	96.7%
Total	5,034	1,000.4	198.7	

Sawtimber Volume by DBH

DBH	# Trees	Volume	Avg BF/Tree	% of Total
10	278	11.1	39.8	1.1%
12	1,321	132.3	100.1	13.2%
14	1,621	281.4	173.6	28.1%
16	1,011	252.8	250.1	25.3%
18	535	188.0	351.4	18.8%
20	193	90.8	470.3	9.1%
22	61	34.2	560.0	3.4%
24	10	7.0	699.0	0.7%
26	3	2.3	752.0	0.2%
28	1	0.7	654.0	0.1%
Total	5,034	1,000.4	198.7	

Sawtimber Volume by Species

Species	# Trees	Volume	Avg BF/Tree	% of Total
Gum	35	4.7	135.1	0.5%
Hickory	14	2.0	144.4	0.2%
Loblolly Pine	4,812	967.4	201.0	96.7%
Maple	2	0.6	281.0	0.1%
Miscellaneous Hardwood	11	1.0	88.0	0.1%
Poplar	99	11.8	119.1	1.2%
Red Oak	22	5.3	238.7	0.5%
White Oak	39	7.7	196.3	0.8%
Total	5,034	1,000.4	198.7	

Irby Block B

Timber Marketing & Management, Inc.

Professional Forestry Consultants

P.O. Box 396

Chesterfield, VA 23832-0000

Phone: (804) 796-9622 • Fax: (804) 796-9693

Sawtimber Cruise: 100.0%

Cruise Date: Saturday, May 11, 2019
 Owner's Name: Randolph Irby
 County/State: Nottoway County, VA
 Acreage: 8+/-
 Cruise Type: Tree Count
 Harvest Type: Clear Cut
 Total BF/Acre: 4,330
 Pine Vol/Tree: 310.3
 Hardwood Vol/Tree: 386.7

Volume Legend:

- 1) Diameters shown in inches (DBH)
- 2) Logs measured in 16' increments
- 3) Sawtimber volumes are shown in thousands of board feet (MBF)
- 4) Volume scale used for each species of sawtimber is noted
- 5) Pulpwood volumes are shown in standard cords (128 cubic feet)

Comments:

Gum - Sawtimber International 1/4 Scale

DBH	Number of Logs					# Trees	Volume	% of Total
	1-Log	2-Log	3-Log	4-Log	5-Log			
18	1	1				2	0.4	100.0%
Total	1	1				2	0.4	

Hickory - Sawtimber International 1/4 Scale

DBH	Number of Logs					# Trees	Volume	% of Total
	1-Log	2-Log	3-Log	4-Log	5-Log			
16		1				1	0.2	25.3%
18		1				1	0.2	33.0%
20		1				1	0.3	41.8%
Total		3				3	0.8	

Loblolly Pine - Sawtimber International 1/4 Scale

DBH	Number of Logs					# Trees	Volume	% of Total
	1-Log	2-Log	3-Log	4-Log	5-Log			
10	1					1	0.0	0.2%
12	3	6	2			11	1.0	4.2%
14	1	2	3			6	0.9	4.1%
16	1	5	10	1		17	3.9	17.3%
18		4	9	2		15	4.8	21.3%
20	1	1	4	8		14	6.3	27.8%
22			4			4	2.1	9.3%
24			3	1		4	2.7	11.9%
32		1				1	0.9	3.8%
Total	7	19	35	12		73	22.7	

Poplar - Sawtimber International 1/4 Scale

DBH	Number of Logs					# Trees	Volume	% of Total
	1-Log	2-Log	3-Log	4-Log	5-Log			
16		1				1	0.2	3.0%
18		1				1	0.2	3.9%
20		1	3	1		5	2.1	32.9%
22		1				1	0.4	6.0%
24			4			4	2.6	40.2%
28			1			1	0.9	14.1%
Total		4	8	1		13	6.4	

Red Oak - Sawtimber International 1/4 Scale

DBH	Number of Logs					# Trees	Volume	% of Total
	1-Log	2-Log	3-Log	4-Log	5-Log			
18		1				1	0.2	9.0%
20		1				1	0.3	11.4%
22		2				2	0.8	28.2%
24		3				3	1.4	51.3%
Total		7				7	2.7	

White Oak - Sawtimber International 1/4 Scale

DBH	Number of Logs					# Trees	Volume	% of Total
	1-Log	2-Log	3-Log	4-Log	5-Log			
18	2					2	0.3	17.0%
20		2				2	0.6	37.2%
22		2				2	0.8	45.8%
Total	2	4				6	1.7	

Irby Block B

Timber Marketing & Management, Inc.Cruise Date: Saturday, May 11, 2019
Owner's Name: Randolph Irby
County/State: Nottoway County, VA**Sawtimber Volume by Timber Type**

<u>Timber Type</u>	<u># Trees</u>	<u>Volume</u>	<u>Avg BF/Tree</u>	<u>% of Total</u>
Hardwood	31	12.0	386.7	34.6%
Pine	73	22.7	310.3	65.4%
Total	104	34.6	333.1	

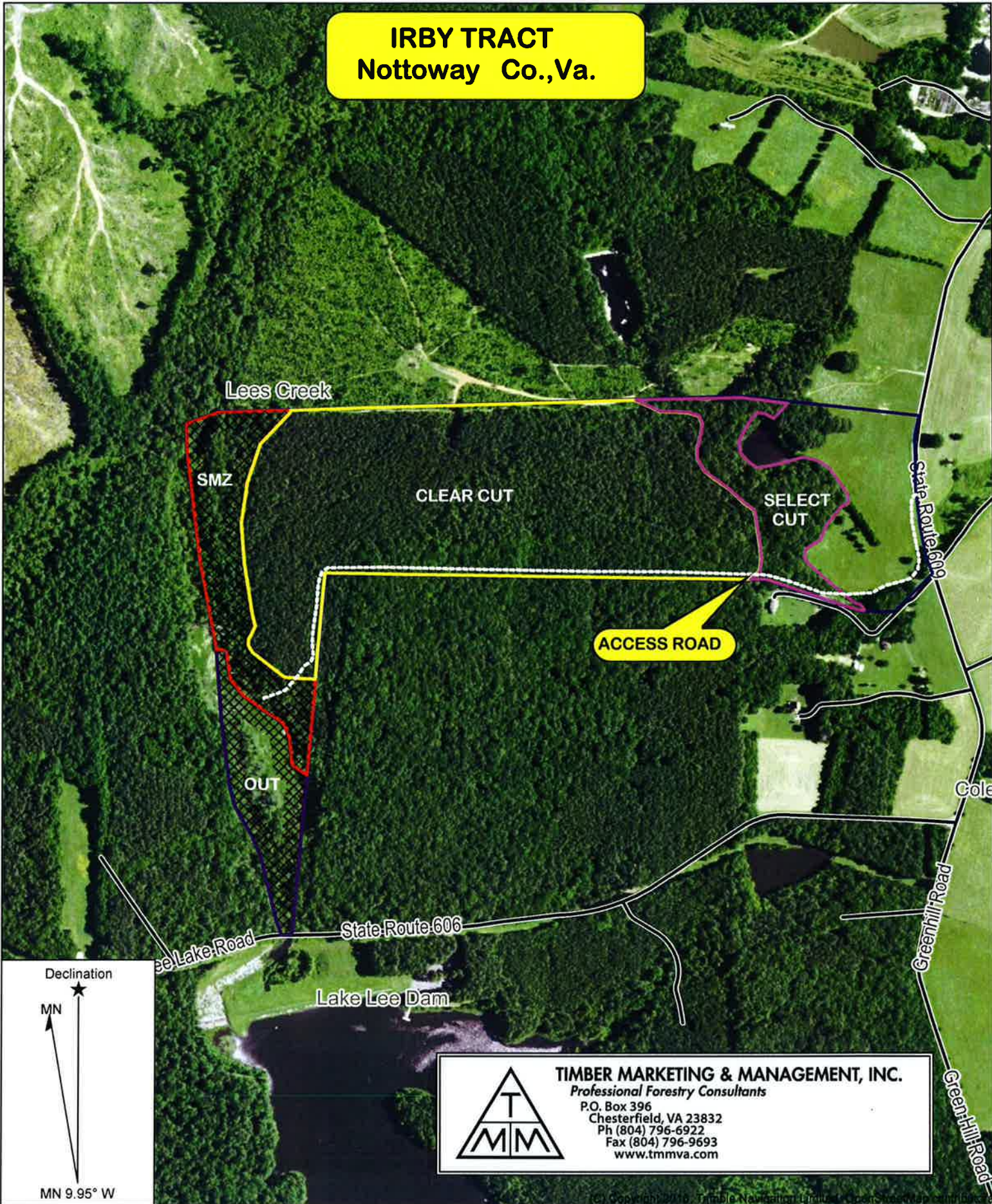
Sawtimber Volume by DBH

<u>DBH</u>	<u># Trees</u>	<u>Volume</u>	<u>Avg BF/Tree</u>	<u>% of Total</u>
10	1	0.0	36.0	0.1%
12	11	1.0	87.3	2.8%
14	6	0.9	153.8	2.7%
16	19	4.3	226.7	12.4%
18	22	6.2	283.8	18.0%
20	23	9.7	420.1	27.9%
22	9	4.0	449.7	11.7%
24	11	6.7	608.0	19.3%
28	1	0.9	904.0	2.6%
32	1	0.9	870.0	2.5%
Total	104	34.6	333.1	

Sawtimber Volume by Species

<u>Species</u>	<u># Trees</u>	<u>Volume</u>	<u>Avg BF/Tree</u>	<u>% of Total</u>
Gum	2	0.4	196.0	1.1%
Hickory	3	0.8	250.7	2.2%
Loblolly Pine	73	22.7	310.3	65.4%
Poplar	13	6.4	493.2	18.5%
Red Oak	7	2.7	391.9	7.9%
White Oak	6	1.7	281.7	4.9%
Total	104	34.6	333.1	

IRBY TRACT
Nottoway Co., Va.



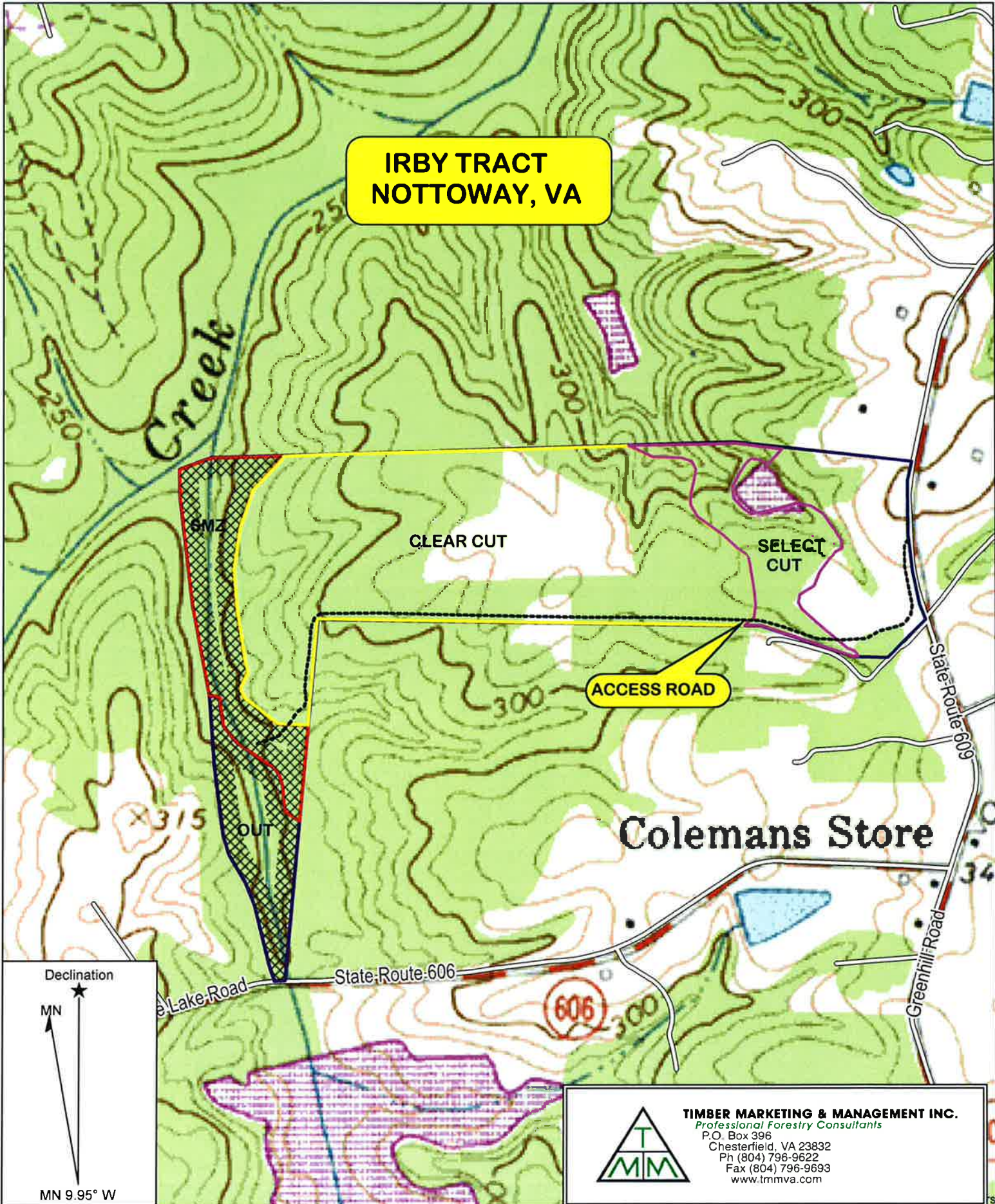


TIMBER MARKETING & MANAGEMENT, INC.
Professional Forestry Consultants
P.O. Box 396
Chesterfield, VA 23832
Ph (804) 796-6922
Fax (804) 796-9693
www.tmmva.com

Name: WELLVILLE SW, VA
Date: 06/04/19
Scale: 1 inch = 660 ft.

Location: 037° 10' 21.6050" N, 077° 58' 48.0227" W
Caption: <<Type caption here.>>

**IRBY TRACT
NOTTOWAY, VA**



Declination

MN

MN 9.95° W



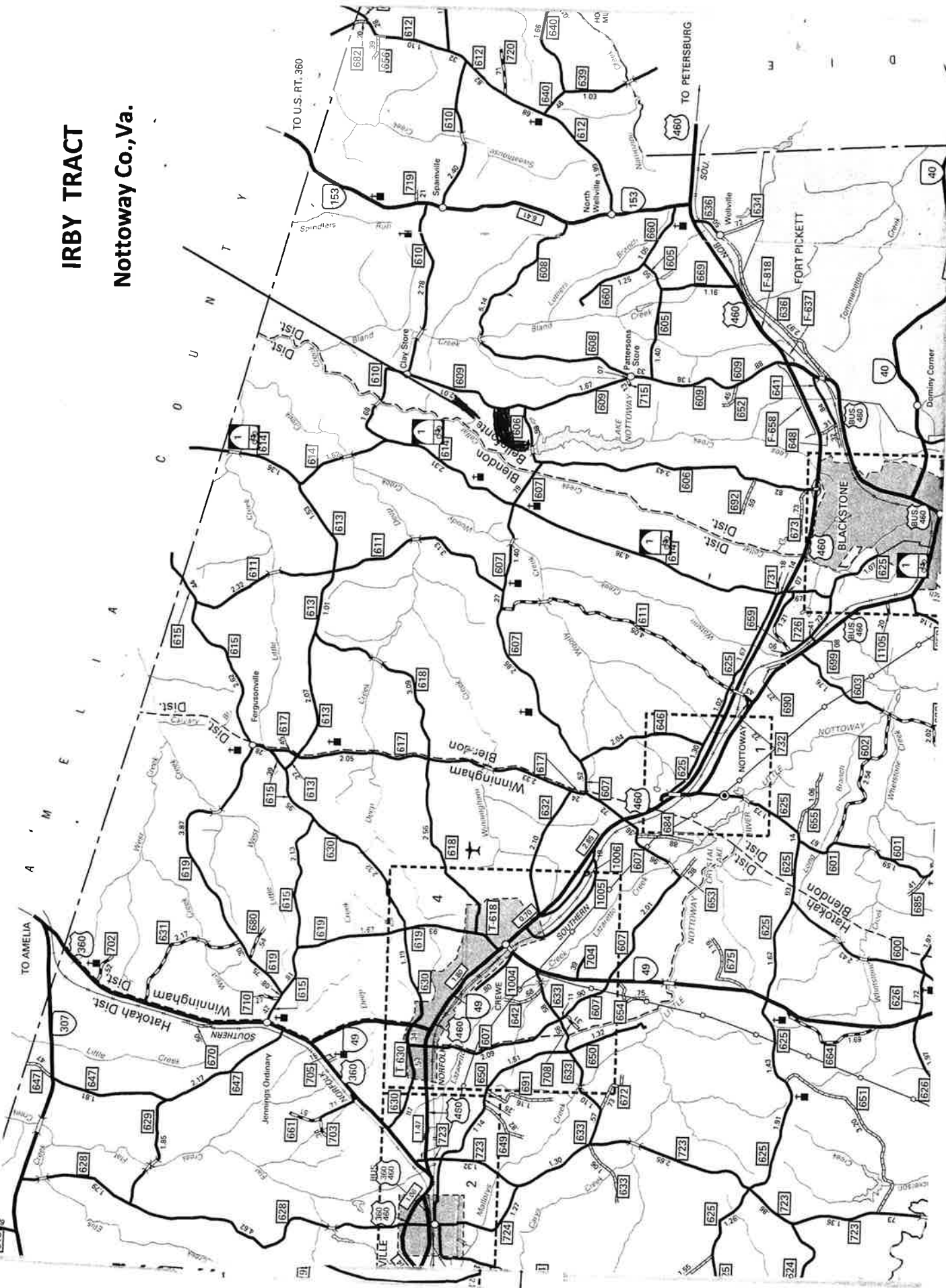
TIMBER MARKETING & MANAGEMENT INC.
Professional Forestry Consultants
P.O. Box 396
Chesterfield, VA 23832
Ph (804) 796-9622
Fax (804) 796-9693
www.tmmva.com

Name: IRBY TRACT
Date: 05/31/19
Scale: 1 inch = 660 ft.

Location: NOTTOWAY, VA

IRBY TRACT

Nottoway Co., Va.



TIMBER MARKETING & MANAGEMENT, INC.
Professional Forestry Consultants

P.O. Box 396
Chesterfield, VA 23832
Ph (804) 796-6922
Fax (804) 796-9693
www.tmmva.com

