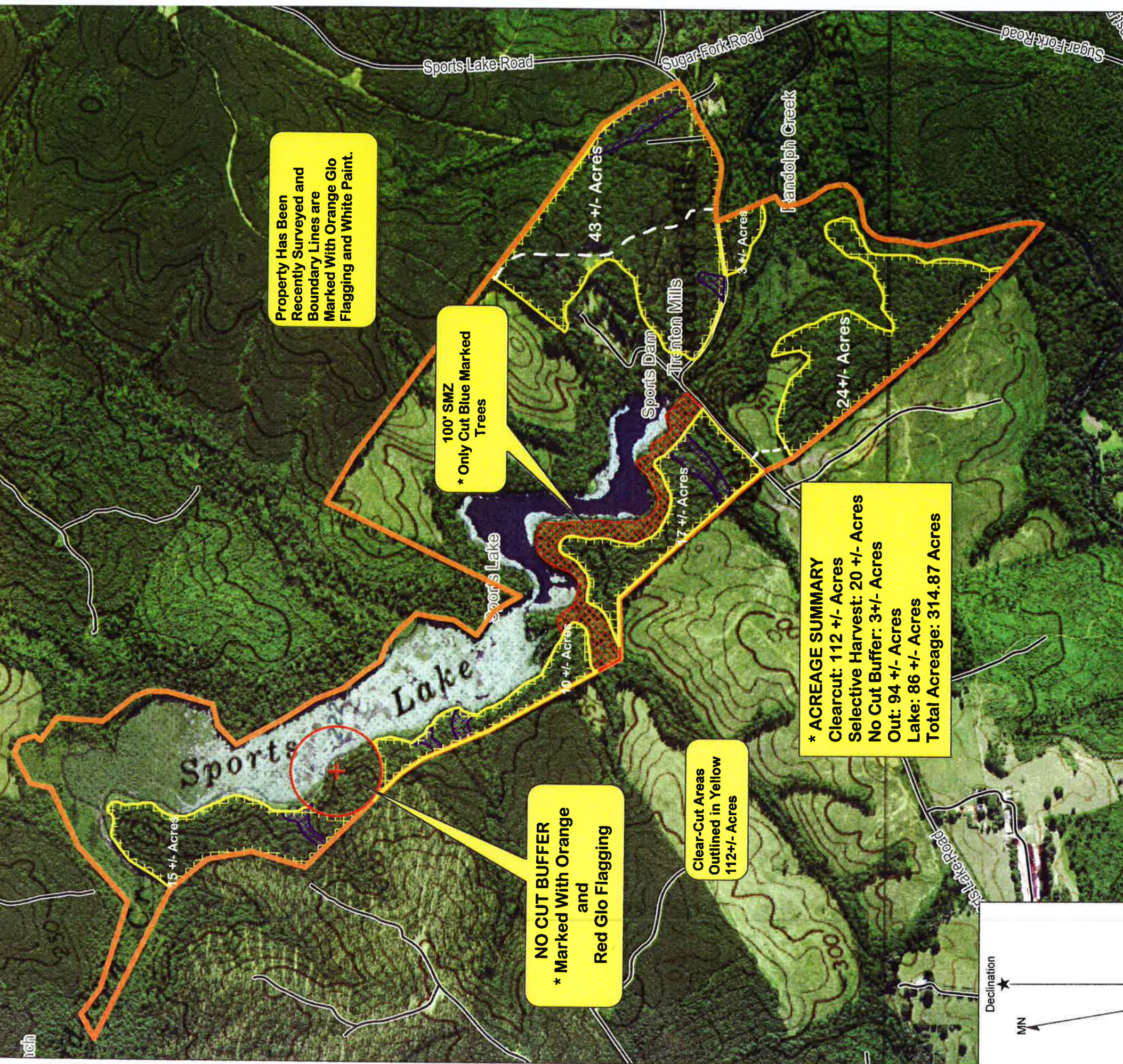


JCM III LLC. (Sports Lake Tract)
314.87 Acres
Cumberland County, VA



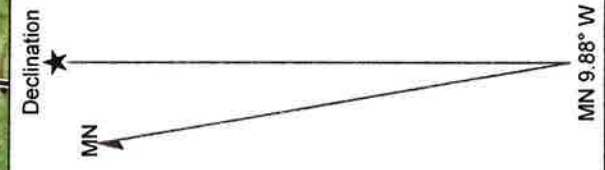
Property Has Been Recently Surveyed and Boundary Lines are Marked With Orange Glo Flagging and White Paint.

100' SMZ
 * Only Cut Blue Marked Trees

NO CUT BUFFER
 * Marked With Orange and Red Glo Flagging

Clear-Cut Areas Outlined in Yellow
 112 +/- Acres

*** ACREAGE SUMMARY**
 Clearcut: 112 +/- Acres
 Selective Harvest: 20 +/- Acres
 No Cut Buffer: 3 +/- Acres
 Out: 94 +/- Acres
 Lake: 86 +/- Acres
 Total Acreage: 314.87 Acres



TIMBER MARKETING & MANAGEMENT INC.
 Professional Forestry Consultants
 P.O. Box 396
 Chesterfield, VA 23832
 Ph (804) 796-9622
 Fax (804) 796-9693
 www.tmmva.com

Name: JCM III LLC - SPORTS LAKE TRACT
 Date: 01/24/19
 Scale: 1 inch = 752 ft.

Location: 037° 37' 55.9720" N, 078° 13' 57.9220" W
 112 +/- Acre Clear-Cut