

TIMBER MARKETING & MANAGEMENT INC.

Professional Forestry Consultants

P.O. Box 396
 Chesterfield, VA 23832
 Ph (804) 796-9622
 Fax (804) 796-9693
 www.tmmva.com

Sale Date:	January 13, 2022	
Time:	11:00 a.m.	
Day:	Thursday	
	Main Block	SMZ
Total Vol./Acre:	1,233 B.F.	1,987 B. F.
Pine Vol/Tree:	55 B.F.	202 B. F.
Hdwd. Vol/Tree:	175 B.F.	241 B. F.

**CLEAR CUT SALE
 EXCELLENT ROADSIDE ACCESS
 AND GROUND CONDITIONS**

Having been employed by **Justin Jones** we solicit bids on all merchantable timber on **73 +/- acres** in **Appomattox County, Virginia** and as shown on the attached map.

We made an 8% plot cruise of the pulpwood-size trees to be harvested. Our estimate of their volume is:

<u>Pulpwood</u>	<u>Cords</u>	<u>Tons</u>
Pine	2,263	5,884
Soft Hardwood	41	107
Hard Hardwood	<u>39</u>	<u>101</u>
Total:	2,343	6,092

We made an 8% cruise in the Main Block and a 100% tree count in the SMZ's of the sawtimber-size trees to be harvested. Our estimate of their volume is:

<u>Sawtimber</u>	<u>Main</u>	<u>SMZ</u>	<u>Total</u>
Loblolly Pine	36,800	8,500	45,300
Poplar	12,900	3,800	16,700
White Oak	8,200	3,500	11,700
Hickory	8,000	900	8,900
Red Oak	5,800	900	6,700
Northern Red Oak	2,400	0	2,400
Chesnut Oak	<u>0</u>	<u>300</u>	<u>300</u>
	74,100	17,900	92,000 <i>Total BF Int 1/4" Scale</i>

The above volumes are not guaranteed; however, care was taken in the field to assemble the above tables. You should note how your utilization practices may vary from the above and make any necessary adjustments.

Conditions

1. The landowner assumes responsibility for compliance with the Virginia State Seed Tree Law.
2. A period of time of **2 years** will be allowed to cut and remove the timber.
3. Roads **must** be maintained and restored to their original condition upon completion of the logging. Any newly constructed roads and decks must be left in a graded condition and must be seeded upon completion of logging. Any newly constructed haul roads, skid roads and log decks and all logging operations must be in accordance with the guidelines set out in the **Best Management Practices Manual** of the Virginia Department of Forestry.
4. No tops or laps will be allowed to remain in the streams, fields, buffers or over cutting boundaries. They must be pulled back immediately.
5. Only the blue marked trees are to be cut from Streamside Management Zones.
6. No logging will be permitted during excessively wet weather conditions as determined by Timber Marketing & Management, Inc. If logging is halted due to weather conditions, then an extension of time equal to the time lost will be granted.
7. A **\$2,500.00** performance bond will be paid at closing and held by Timber Marketing & Management, Inc. to insure compliance with all BMP requirements, road maintenance and conditions of the Timber Purchase Contract.

Only sealed bids will be accepted and owners reserve the right to reject any or all bids. BIDS SHOULD BE SUBMITTED PRIOR TO THE TIME OF BID OPENING AND CAN BE SUBMITTED VIA: Mail to: Timber Marketing & Management, Inc. P. O. Box 396, Chesterfield, Virginia 23832 **OR** hand delivered to 9520 Ironbridge Road, Chesterfield, Virginia **OR** telephoned in to 804-796-9622 **OR** faxed to 804-796-9693 **OR** emailed to **office@tmmva.com** Bids must be made on a lump-sum basis and must be received at this address no later than the posted bid date and time as shown on the cover. Closing shall take place within 30 days of bid acceptance.

There will be no scheduled show trip of the tract; however, you may call and set an appointment or you may inspect the property at your own leisure.

An electronic copy of this sale notice, including maps and volumes, is available for download and viewing on our website at www.tmmva.com under the Timber Sale Notices section.

Sincerely,
Timber Marketing & Management, Inc.



Matt Sandman, Area Manager
434-808-2102 Mobile
804-796-9622 Office

Jones Tract

Timber Marketing & Management, Inc.

Professional Forestry Consultants

P.O. Box 396

Chesterfield, VA 23832-0000

Phone: (804) 796-9622 • Fax: (804) 796-9693

Pulpwood Cruise: 8 0%

Sawtimber Cruise: 8 0%

Cruise Date: Thursday, December 09, 2021

Owner's Name: Jones

County/State: Appomattox County, VA

Acreage: 60+/-

Cruise Type: Plot Cruise

Harvest Type: Clear Cut

Total BF/Acre: 1,233

Pine Vol/Tree: 54.6

Hardwood Vol/Tree: 174.7

Volume Legend:

- 1) Diameters shown in inches (DBH)
- 2) Logs measured in 16' increments
- 3) Sawtimber volumes are shown in thousands of board feet (MBF)
- 4) Volume scale used for each species of sawtimber is noted
- 5) Pulpwood volumes are shown in standard cords (128 cubic feet)

Comments:

Pulpwood

Standard Cord

DBH	Wood Classification							
	Pine		Soft Hardwood		Hard Hardwood		Cedar	
# Trees	Volume	# Trees	Volume	# Trees	Volume	# Trees	Volume	
6	5,925	267	263	10	238	9		
8	9,150	915	250	20	225	18		
10	5,463	907	63	8	50	7		
12	663	175	13	2	25	5		
Total	21,200	2,263	588	41	538	39		

Hickory - Sawtimber

International 1/4 Scale

DBH	Number of Logs							% of Total
	1-Log	2-Log	3-Log	4-Log	5-Log	# Trees	Volume	
16		25	13			38	8.0	100.0%
Total		25	13			38	8.0	

Loblolly Pine - Sawtimber

International 1/4 Scale

DBH	Number of Logs							% of Total
	1-Log	2-Log	3-Log	4-Log	5-Log	# Trees	Volume	
10	413	125				538	22.2	60.4%
12	50	50	25			125	10.4	28.2%
18			13			13	4.2	11.4%
Total	463	175	38			675	36.8	

Northern Red Oak - Sawtimber

International 1/4 Scale

DBH	Number of Logs							% of Total
	1-Log	2-Log	3-Log	4-Log	5-Log	# Trees	Volume	
16		13				13	2.4	100.0%
Total		13				13	2.4	

Poplar - Sawtimber

International 1/4 Scale

DBH	Number of Logs							% of Total
	1-Log	2-Log	3-Log	4-Log	5-Log	# Trees	Volume	
16		13	13			25	5.6	43.3%
18		13	13			25	7.3	56.7%
Total		25	25			50	12.9	

Red Oak - Sawtimber

International 1/4 Scale

DBH	Number of Logs					# Trees	Volume	% of Total
	1-Log	2-Log	3-Log	4-Log	5-Log			
12	38					38	2.1	36.4%
16	13					13	1.4	24.3%
20	13					13	2.3	39.3%
Total	63					63	5.8	

White Oak - Sawtimber

International 1/4 Scale

DBH	Number of Logs					# Trees	Volume	% of Total
	1-Log	2-Log	3-Log	4-Log	5-Log			
14		25				25	3.5	43.2%
16		13				13	2.4	29.1%
20	13					13	2.3	27.7%
Total	13	38				50	8.2	

Sawtimber Volume by Timber Type

Timber Type	# Trees	Volume	Avg BF/Tree	% of Total
Hardwood	213	37.1	174.7	50.2%
Pine	675	36.8	54.6	49.8%
Total	888	74.0	83.3	

Sawtimber Volume by DBH

DBH	# Trees	Volume	Avg BF/Tree	% of Total
10	538	22.2	41.3	30.1%
12	163	12.5	76.9	16.9%
14	25	3.5	141.0	4.8%
16	100	19.7	196.8	26.6%
18	38	11.5	306.7	15.6%
20	25	4.5	181.0	6.1%
Total	888	74.0	83.3	

Sawtimber Volume by Species

Species	# Trees	Volume	Avg BF/Tree	% of Total
Hickory	38	8.0	212.0	10.8%
Loblolly Pine	675	36.8	54.6	49.8%
Northern Red Oak	13	2.4	190.0	3.2%
Poplar	50	12.9	257.5	17.4%
Red Oak	63	5.8	92.2	7.8%
White Oak	50	8.2	163.3	11.0%
Total	888	74.0	83.3	

Jones Tract - SMZ

Timber Marketing & Management, Inc.

Professional Forestry Consultants

P.O. Box 396

Chesterfield, VA 23832-0000

Phone: (804) 796-9622 • Fax: (804) 796-9693

Sawtimber Cruise: 100 0%

Cruise Date: Thursday, December 09, 2021
 Owner's Name: Jones
 County/State: Appomattox County, VA
 Acreage: 9+/-
 Cruise Type: Tree Count
 Harvest Type: Select Cut
 Total BF/Acre: 1,987
 Pine Vol/Tree: 201.9
 Hardwood Vol/Tree: 241.2

Volume Legend:

- 1) Diameters shown in inches (DBH)
- 2) Logs measured in 16' increments
- 3) Sawtimber volumes are shown in thousands of board feet (MBF)
- 4) Volume scale used for each species of sawtimber is noted
- 5) Pulpwood volumes are shown in standard cords (128 cubic feet)

Comments:

Chestnut Oak - Sawtimber International 1/4 Scale

Number of Logs									
DBH	1-Log	2-Log	3-Log	4-Log	5-Log	# Trees	Volume	% of Total	
14	1					1	0.1	31.4%	
20	1					1	0.2	68.6%	
Total	2					2	0.3		

Hickory - Sawtimber International 1/4 Scale

Number of Logs									
DBH	1-Log	2-Log	3-Log	4-Log	5-Log	# Trees	Volume	% of Total	
16		1				1	0.2	21.3%	
20		1				1	0.3	35.2%	
22		1				1	0.4	43.4%	
Total		3				3	0.9		

Loblolly Pine - Sawtimber International 1/4 Scale

Number of Logs									
DBH	1-Log	2-Log	3-Log	4-Log	5-Log	# Trees	Volume	% of Total	
10	1					1	0.0	0.4%	
12	1	3	1			5	0.5	5.3%	
14	1	5	3			9	1.3	15.9%	
16	1	10	6			17	3.5	41.8%	
18		4	5			9	2.7	31.5%	
20			1			1	0.4	5.0%	
Total	4	22	16			42	8.5		

Poplar - Sawtimber International 1/4 Scale

Number of Logs									
DBH	1-Log	2-Log	3-Log	4-Log	5-Log	# Trees	Volume	% of Total	
16		4				4	0.8	19.8%	
18		2	2			4	1.2	30.4%	
20		2	3			5	1.9	49.8%	
Total		8	5			13	3.8		

Red Oak - Sawtimber International 1/4 Scale

Number of Logs									
DBH	1-Log	2-Log	3-Log	4-Log	5-Log	# Trees	Volume	% of Total	
18		1				1	0.2	26.1%	
20		1				1	0.3	33.1%	
22		1				1	0.4	40.8%	
Total		3				3	0.9		

White Oak - Sawtimber International 1/4 Scale

Number of Logs									
DBH	1-Log	2-Log	3-Log	4-Log	5-Log	# Trees	Volume	% of Total	
14	2					2	0.2	4.8%	
16	5	3				8	1.1	32.6%	
18	1	1				2	0.4	11.3%	
20	1	3				4	1.1	32.4%	
22		1				1	0.4	11.2%	
24	1					1	0.3	7.7%	
Total	10	8				18	3.5		

Jones Tract - SMZ

Timber Marketing & Management, Inc.

Cruise Date: Thursday, December 09, 2021
Owner's Name: Jones
County/State: Appomattox County, VA

Sawtimber Volume by Timber Type

<u>Timber Type</u>	<u># Trees</u>	<u>Volume</u>	<u>Avg BF/Tree</u>	<u>% of Total</u>
Hardwood	39	9.4	241.2	52.6%
Pine	42	8.5	201.9	47.4%
Total	81	17.9	220.8	

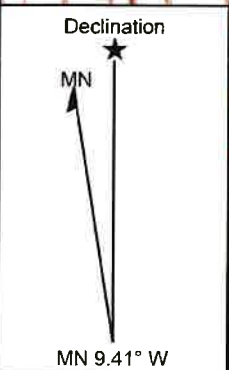
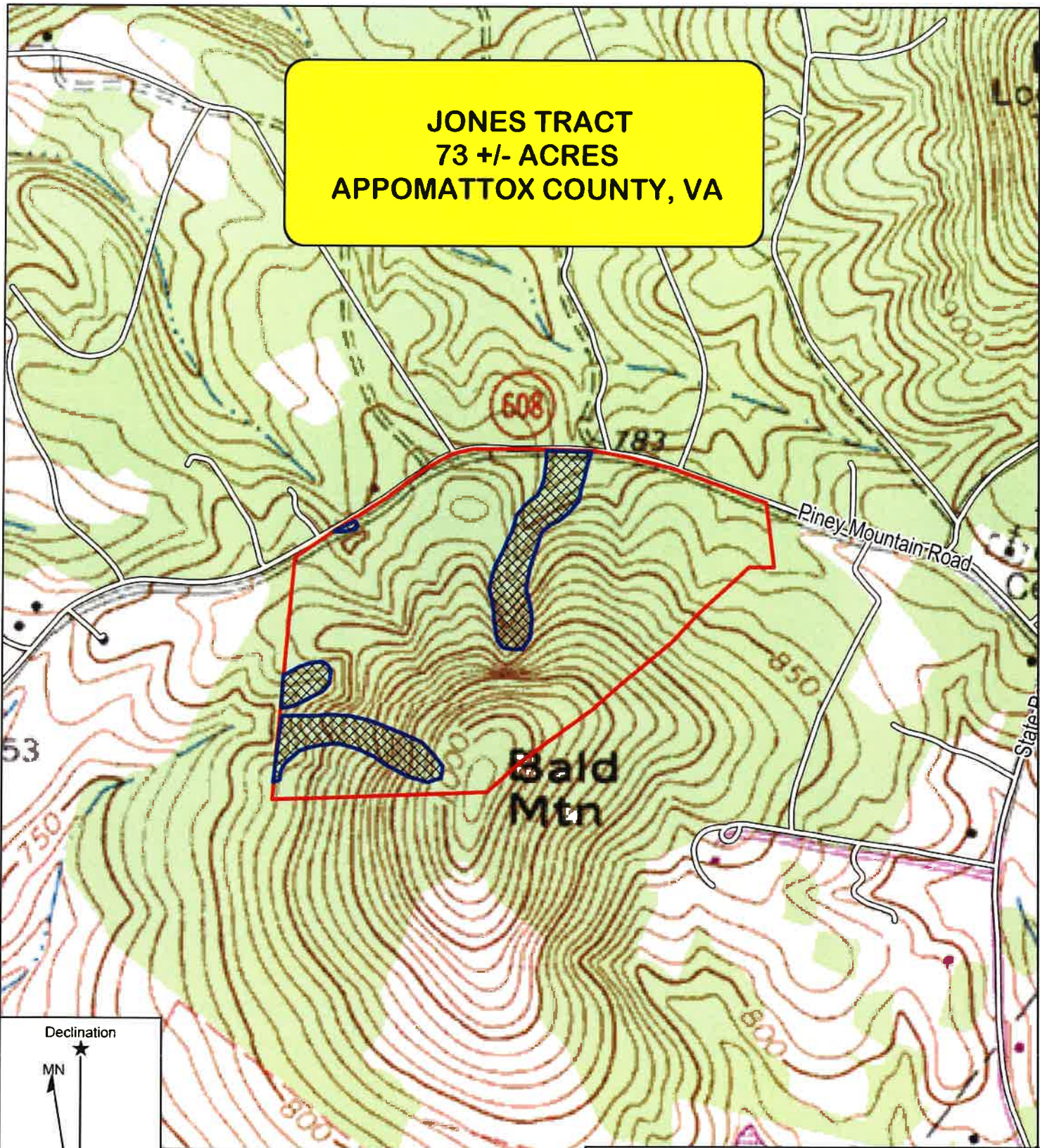
Sawtimber Volume by DBH

<u>DBH</u>	<u># Trees</u>	<u>Volume</u>	<u>Avg BF/Tree</u>	<u>% of Total</u>
10	1	0.0	36.0	0.2%
12	5	0.5	90.4	2.5%
14	12	1.6	132.9	8.9%
16	30	5.6	187.6	31.5%
18	16	4.5	280.0	25.0%
20	13	4.3	328.3	23.9%
22	3	1.2	387.0	6.5%
24	1	0.3	266.0	1.5%
Total	81	17.9	220.8	

Sawtimber Volume by Species

<u>Species</u>	<u># Trees</u>	<u>Volume</u>	<u>Avg BF/Tree</u>	<u>% of Total</u>
Chestnut Oak	2	0.3	132.0	1.5%
Hickory	3	0.9	297.0	5.0%
Loblolly Pine	42	8.5	201.9	47.4%
Poplar	13	3.8	295.2	21.5%
Red Oak	3	0.9	316.3	5.3%
White Oak	18	3.5	192.4	19.4%
Total	81	17.9	220.8	

**JONES TRACT
73 +/- ACRES
APPOMATTOX COUNTY, VA**



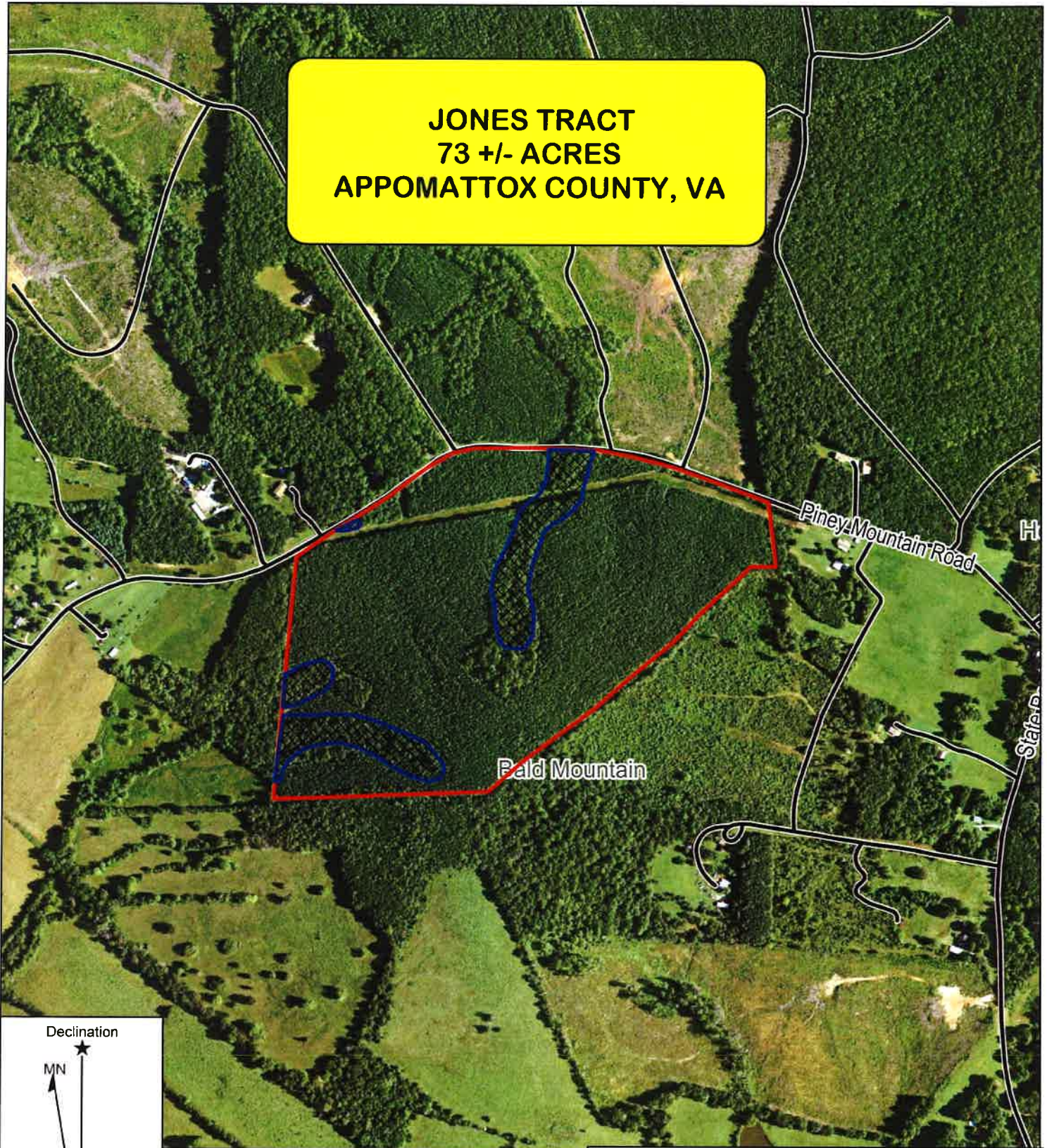
— Property Boundaries
— Streamside Mgmt. Zones

TIMBER MARKETING & MANAGEMENT INC.
Professional Forestry Consultants
P.O. Box 396
Chesterfield, VA 23832
Ph (804) 796-9622
Fax (804) 796-9693
www.tmmva.com

Name: Jones Tract
Date: December 7, 2021
Scale: 1 inch = 660 ft.

Location: Appomattox County, VA

**JONES TRACT
73 +/- ACRES
APPOMATTOX COUNTY, VA**



Declination



MN 9.41° W

- Property Boundaries
- Streamside Mgmt. Zones



TIMBER MARKETING & MANAGEMENT INC.
Professional Forestry Consultants
P.O. Box 396
Chesterfield, VA 23832
Ph (804) 796-9622
Fax (804) 796-9693
www.tmmva.com

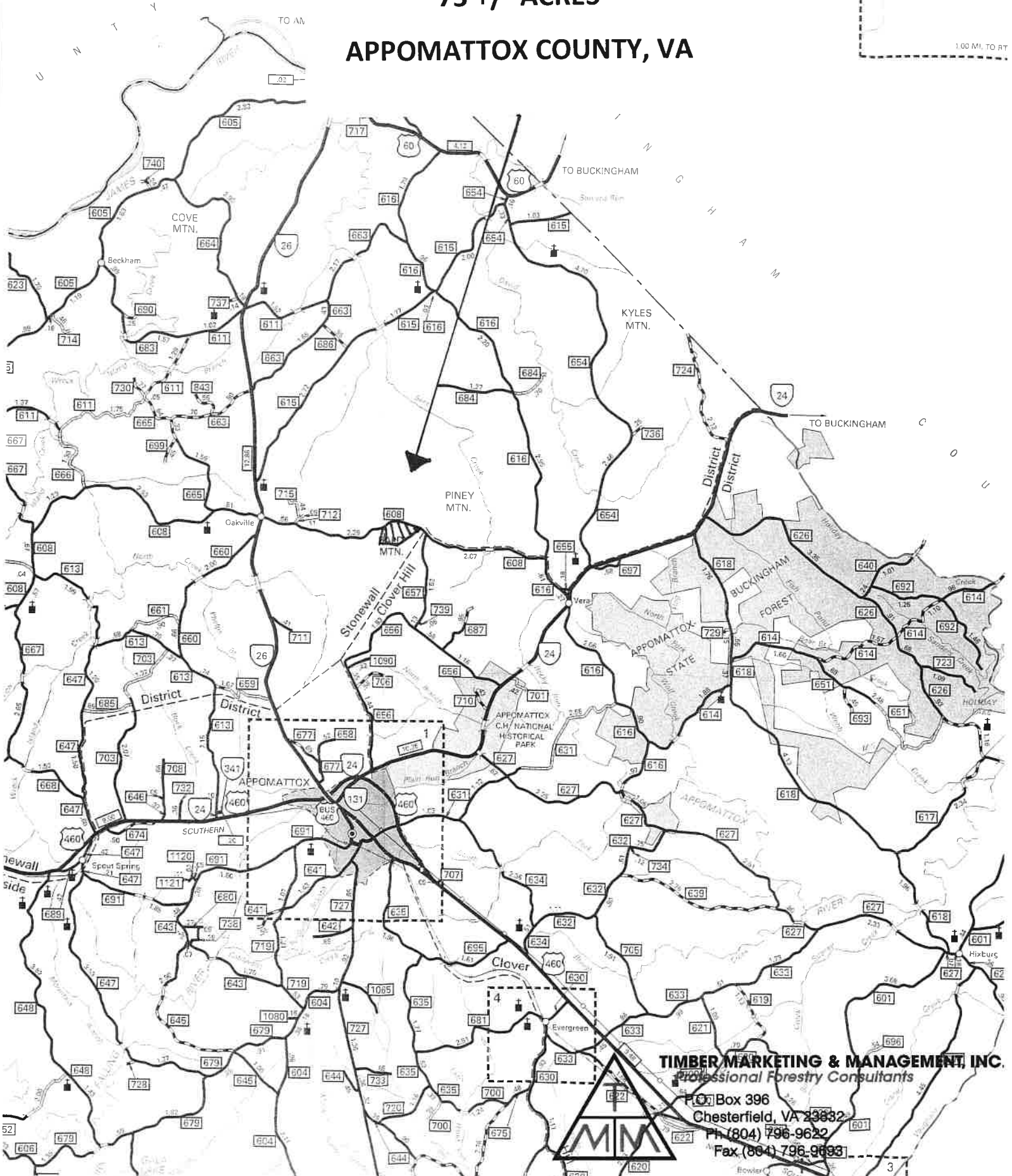
Name: Jones Tract
Date: December 7, 2021
Scale: 1 inch = 660 ft.

Location: Appomattox County, VA

JONES TRACT

73 +/- ACRES

APPOMATTOX COUNTY, VA



TIMBER MARKETING & MANAGEMENT, INC.
Professional Forestry Consultants

P.O. Box 396
Chesterfield, VA 23832
PH (804) 796-9622
Fax (804) 796-9693

