**TIMBER MARKETING & MANAGEMENT INC.***Professional Forestry Consultants*

P.O. Box 396
Chesterfield, VA 23832
Ph (804) 796-9622
Fax (804) 796-9693
www.tmmva.com

Sale Date:	January 28, 2021
Time:	11:00 a.m.
Day:	Thursday
Total Vol./Acre:	2,924 B. F.
Hdwd. Vol/Tree:	184 B. F.

BLACK WALNUT SALE

Having been employed by **Kings Place LLC** we solicit bids on the Black Walnut timber only on **7 +/- acres** in **King William County, Virginia** and as shown on the attached map.

SAWTIMBER

We have made a 100% count of the sawtimber-size trees to be harvested. Our estimate of their volume is:

Black Walnut: 20,500 B. F. Intl. 1/4" scale

The above volumes are not guaranteed; however, care was taken in the field to assemble the above tables. You should note how your utilization practices may vary from the above and make any necessary adjustments.

CONDITIONS

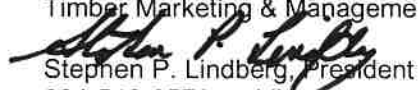
1. A period of time of 24 months will be allowed to cut and remove the timber.
2. The marked and numbered Black Walnut Trees are flagged with Pink Glo flagging and marked with red paint.
3. Roads **must** be maintained and restored to their original condition upon completion of the logging. Any newly constructed roads and decks must be left in a graded condition and must be seeded upon completion of logging. Any newly constructed haul roads, skid roads and log decks and all logging operations must be in accordance with the guidelines set out in the **Best Management Practices Manual** of the Virginia Department of Forestry.
4. No tops or laps will be allowed to remain in the streams, fields, buffers or over cutting boundaries. They must be pulled back immediately.
5. No logging will be permitted during excessively wet weather conditions as determined by Timber Marketing & Management, Inc. If logging is halted due to weather conditions, then an extension of time equal to the time lost will be granted.
6. A \$1,250.00 performance bond will be paid at closing and held by Timber Marketing & Management, Inc. to insure compliance with all BMP requirements, road maintenance and conditions of the Timber Purchase Contract.
7. A list of the Walnut Trees by number, D.B.H. and merchantable height is available upon request and is also posted on our website.

Only sealed bids will be accepted and owners reserve the right to reject any or all bids. BIDS SHOULD BE SUBMITTED PRIOR TO THE TIME OF BID OPENING AND CAN BE SUBMITTED VIA: Mail to: Timber Marketing & Management, Inc. P. O. Box 396, Chesterfield, Virginia 23832 **OR** hand delivered to 9520 Ironbridge Road, Chesterfield, Virginia **OR** telephoned in to 804-796-9622 **OR** faxed to 804-796-9693 **OR** emailed to tmm4u@aol.com Bids must be made on a lump-sum basis and must be received at this address no later than the posted bid date and time as shown on the cover. Closing shall take place within 30 days of bid acceptance.

There will be no scheduled show trip of the tract; however, you may call and set an appointment or you may inspect the property at your own leisure.

An electronic copy of this sale notice, including maps and volumes, is available for download and viewing on our website at www.tmmva.com under the Timber Sale Notices section.

Sincerely,
Timber Marketing & Management, Inc.


Stephen P. Lindberg, President
804-512-3578 mobile
804-796-9622 office

Kings Place LLC - Walnut

Timber Marketing & Management, Inc.

Professional Forestry Consultants

P.O. Box 396

Chesterfield, VA 23832-0000

Phone: (804) 796-9622 • Fax: (804) 796-9693

Sawtimber Cruise: 100.0%

Cruise Date: Monday, November 02, 2020
 Owner's Name: Kings Place LLC
 County/State: King William County, VA
 Acreage: 7+/-
 Cruise Type: Tree Count
 Harvest Type: Clear Cut
 Total BF/Acre: 2,924
 Hardwood Vol/Tree: 184.4

Volume Legend:

- 1) Diameters shown in inches (DBH)
- 2) Logs measured in 16' increments
- 3) Sawtimber volumes are shown in thousands of board feet (MBF)
- 4) Volume scale used for each species of sawtimber is noted
- 5) Pulpwood volumes are shown in standard cords (128 cubic feet)

Comments:

Walnut - Sawtimber

International 1/4 Scale

DBH	Number of Logs					# Trees	Volume	% of Total
	1-Log	2-Log	3-Log	4-Log	5-Log			
12	10					10	0.6	2.7%
14	27					27	2.2	10.9%
16	19	7				26	3.5	16.9%
18	11	3				14	2.3	11.4%
20	8	5				13	3.0	14.7%
22	5	4				9	2.7	13.0%
24		3				3	1.4	6.9%
26	1					1	0.3	1.5%
28	2					2	0.7	3.6%
30	1					1	0.4	2.1%
32	2	2				4	2.7	13.2%
36	1					1	0.6	3.0%
Total	87	24				111	20.5	

Sawtimber Volume by Timber Type

Timber Type	# Trees	Volume	Avg BF/Tree	% of Total
Hardwood	111	20.5	184.4	100.0%
Total	111	20.5	184.4	

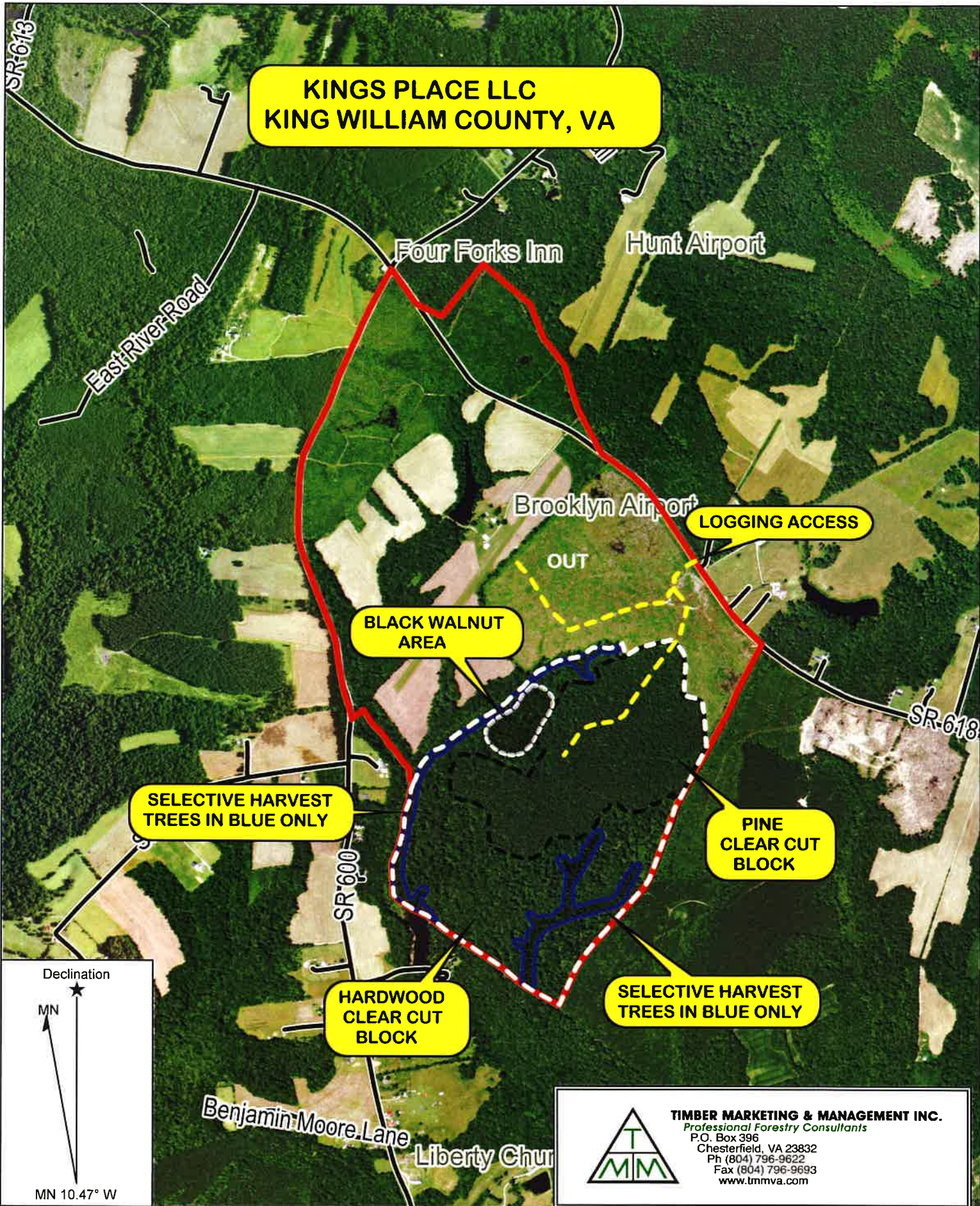
Sawtimber Volume by DBH

DBH	# Trees	Volume	Avg BF/Tree	% of Total
12	10	0.6	56.0	2.7%
14	27	2.2	83.0	10.9%
16	26	3.5	133.0	16.9%
18	14	2.3	166.3	11.4%
20	13	3.0	232.2	14.7%
22	9	2.7	294.8	13.0%
24	3	1.4	469.0	6.9%
26	1	0.3	315.0	1.5%
28	2	0.7	367.0	3.6%
30	1	0.4	424.0	2.1%
32	4	2.7	677.5	13.2%
36	1	0.6	620.0	3.0%
Total	111	20.5	184.4	

Sawtimber Volume by Species

Species	# Trees	Volume	Avg BF/Tree	% of Total
Walnut	111	20.5	184.4	100.0%
Total	111	20.5	184.4	

**KINGS PLACE LLC
KING WILLIAM COUNTY, VA**



**SELECTIVE HARVEST
TREES IN BLUE ONLY**

**BLACK WALNUT
AREA**

LOGGING ACCESS

**PINE
CLEAR CUT
BLOCK**

**SELECTIVE HARVEST
TREES IN BLUE ONLY**

**HARDWOOD
CLEAR CUT
BLOCK**

Declination
★
MN
MN 10.47° W



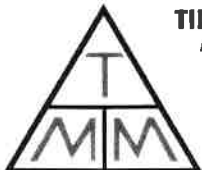
TIMBER MARKETING & MANAGEMENT INC.
Professional Forestry Consultants
P.O. Box 396
Chesterfield, VA 23832
Ph (804) 796-9622
Fax (804) 796-9693
www.tnmva.com

Name: King's Place LLC
Date: 12/09/20
Scale: 1 inch = 1,400 ft.

Location: King William County, VA

KING S PLACE LLC

KING WILLIAM COUNTY, VA



TIMBER MARKETING & MANAGEMENT, INC.
Professional Forestry Consultants

P.O. Box 396
Chesterfield, VA 23832
Ph (804) 796-9622
Fax (804) 796-9693