**TIMBER MARKETING & MANAGEMENT INC.***Professional Forestry Consultants*

P.O. Box 396

Chesterfield, VA 23832

Ph (804) 796-9622

Fax (804) 796-9693

www.tmmva.com

Sale Date:	March 12, 2020
Time:	11:00 a.m.
Day:	Thursday
Total Vol./Acre:	6,229 B. F.
Pine Vol/Tree:	208 B. F.
Hdwd. Vol/Tree:	567 B. F.

**SELECT-CUT SALE
EXCELLENT QUALITY HARDWOOD**

Having been employed by **L & N ASSOCIATES, L.C.** we solicit bids on blue marked timber only on **63 +/- acres** in **Louisa County, Virginia** and as shown on the attached map.

We made a 100% tree count of the sawtimber-size trees. Our estimate of their volume is:

SAWTIMBER

Poplar	205,100	Hickory	15,500
White Oak	83,300	Loblolly/Shortleaf Pine	2,700
Northern Red Oak	46,500	Ash	<u>400</u>
Red Oak	21,000	Total: 392,400 BF Int 1/4" Scale	
Scarlet Oak	17,900		

The above volumes are not guaranteed; however, care was taken in the field to assemble the above tables. You should note how your utilization practices may vary from the above and make any necessary adjustments.

VENEER

Included in the volumes are high quality trees that, from our review, will be of high enough quality that a veneer cut can be obtained. Our estimate of the veneer volume is:

White Oak 4,327 BF Doyle Scale

CONDITIONS

1. A period of time of **24 months** will be allowed to cut and remove the timber.
2. Roads **must** be maintained and restored to their original condition upon completion of the logging. Any newly constructed roads and decks must be left in a graded condition and must be seeded upon completion of logging. Any newly constructed haul roads, skid roads and log decks and all logging operations must be in accordance with the guidelines set out in the **Best Management Practices Manual** of the Virginia Department of Forestry.
3. No tops or laps will be allowed to remain in the streams, fields, buffers or over cutting boundaries. They must be pulled back immediately.
4. Only the blue marked trees are to be cut from the harvest area.
5. No logging will be permitted during excessively wet weather conditions as determined by Timber Marketing & Management, Inc. If logging is halted due to weather conditions, then an extension of time equal to the time lost will be granted.
6. A **\$4,000.00** performance bond will be paid at closing and held by Timber Marketing & Management, Inc. to insure compliance with all BMP requirements, road maintenance and conditions of the Timber Purchase Contract.
7. Purchaser must meet insurance requirements.

Only sealed bids will be accepted and owners reserve the right to reject any or all bids. BIDS SHOULD BE SUBMITTED PRIOR TO THE TIME OF BID OPENING AND CAN BE SUBMITTED VIA: Mail to: Timber Marketing & Management, Inc. P. O. Box 396, Chesterfield, Virginia 23832 **OR** hand delivered to 9520 Ironbridge Road, Chesterfield, Virginia **OR** telephoned in to 804-796-9622 **OR** faxed to 804-796-9693 **OR** emailed to tmm4u@aol.com Bids must be made on a lump-sum basis and must be received at this address no later than the posted bid date and time as shown on the cover. Closing shall take place within 30 days of bid acceptance.

There will be no scheduled show trip of the tract; however, you may call and set an appointment or you may inspect the property at your own leisure.

An electronic copy of this sale notice, including maps and volumes, is available for download and viewing on our website at www.tmmva.com under the Timber Sale Notices section.

Sincerely,
Timber Marketing & Management, Inc.



Andrew J. Lindberg, Vice President
804-338-8436 mobile
804-796-9622 office

L & N Associates

Timber Marketing & Management, Inc.

Professional Forestry Consultants

P.O. Box 396

Chesterfield, VA 23832-0000

Phone: (804) 796-9622 • Fax: (804) 796-9693

Sawtimber Cruise: 100.0%

Veneer Cruise: 100.0%

Cruise Date: Monday, January 20, 2020

Owner's Name: L & N Associates

County/State: Louisa County, VA

Acreage: 63+/-

Cruise Type: Tree Count

Harvest Type: Select Cut

Total BF/Acre: 6,229

Pine Vol/Tree: 208.4

Hardwood Vol/Tree: 567.3

Volume Legend:

- 1) Diameters shown in inches (DBH)
- 2) Logs measured in 16' increments
- 3) Sawtimber volumes are shown in thousands of board feet (MBF)
- 4) Volume scale used for each species of sawtimber is noted
- 5) Pulpwood volumes are shown in standard cords (128 cubic feet)

Comments:

Ash - Sawtimber International 1/4 Scale

Number of Logs								
DBH	1-Log	2-Log	3-Log	4-Log	5-Log	# Trees	Volume	% of Total
16	1					1	0.1	31.1%
18		1				1	0.2	68.9%
Total	1	1				2	0.4	

Hickory - Sawtimber International 1/4 Scale

Number of Logs								
DBH	1-Log	2-Log	3-Log	4-Log	5-Log	# Trees	Volume	% of Total
18			2			2	0.7	4.3%
20		4	9	1		14	5.6	36.3%
22		6	5			11	5.0	32.1%
24			3			3	1.9	12.5%
26			2			2	1.5	9.9%
30		1				1	0.8	4.9%
Total		11	21	1		33	15.5	

Loblolly/Shortleaf Pine - Sawtimber International 1/4 Scale

Number of Logs								
DBH	1-Log	2-Log	3-Log	4-Log	5-Log	# Trees	Volume	% of Total
12		1	3			4	0.5	16.7%
14			3	1		4	0.8	28.6%
16		1	1	2		4	1.1	39.0%
20			1			1	0.4	15.8%
Total		2	8	3		13	2.7	

Northern Red Oak - Sawtimber International 1/4 Scale

Number of Logs								
DBH	1-Log	2-Log	3-Log	4-Log	5-Log	# Trees	Volume	% of Total
18		3				3	0.7	1.6%
20		9	3			12	4.1	8.8%
22		12	12			24	11.0	23.6%
24		5	10			15	8.8	18.9%
26		2	7			9	6.5	13.9%
28		4	6			10	8.0	17.3%
30			4			4	4.2	9.0%
32			1			1	1.2	2.6%
34		2				2	2.0	4.3%
Total		37	43			80	46.5	

Poplar - Sawtimber International 1/4 Scale

Number of Logs								
DBH	1-Log	2-Log	3-Log	4-Log	5-Log	# Trees	Volume	% of Total
16			1	1		2	0.6	0.3%
18		2	2	13		17	6.4	3.1%
20		1	20	58	5	84	41.5	20.2%
22		1	28	61	8	98	59.9	29.2%
24			21	40	4	65	48.0	23.4%
26			12	21		33	28.8	14.0%
28			6	5		11	10.9	5.3%
30			2	3		5	5.9	2.9%
32				1		1	1.5	0.7%
34				1		1	1.7	0.8%
Total		4	92	204	17	317	205.1	

Red Oak - Sawtimber International 1/4 Scale

Number of Logs								
DBH	1-Log	2-Log	3-Log	4-Log	5-Log	# Trees	Volume	% of Total
18		1				1	0.2	1.2%
20		4				4	1.3	6.0%
22		10	6			16	7.0	33.5%
24		2	10			12	7.4	35.1%
26		1	1	1		3	2.3	10.7%
28			2			2	1.8	8.6%
30			1			1	1.1	5.0%
Total		18	20	1		39	21.0	

L & N Associates

Timber Marketing & Management, Inc.

Cruise Date: Monday, January 20, 2020
 Owner's Name: L & N Associates
 County/State: Louisa County, VA

Scarlet Oak - Sawtimber International 1/4 Scale

		Number of Logs					# Trees	Volume	% of Total
DBH	1-Log	2-Log	3-Log	4-Log	5-Log				
18			1			1	0.3	1.9%	
20		4	3			7	2.5	14.2%	
22		5	3			8	3.5	19.7%	
24		3	6			9	5.3	29.5%	
26		3	1			4	2.4	13.7%	
28			1			1	0.9	5.1%	
30		1	2			3	2.9	16.0%	
Total		16	17			33	17.9		

White Oak - Sawtimber International 1/4 Scale

		Number of Logs					# Trees	Volume	% of Total
DBH	1-Log	2-Log	3-Log	4-Log	5-Log				
18		6	7	1		14	4.2	5.1%	
20		24	37			61	23.3	28.0%	
22	1	32	31	1		65	29.6	35.5%	
24		12	15			27	15.3	18.3%	
26		6	4			10	6.4	7.7%	
28		4	2			6	4.4	5.3%	
Total	1	84	96	2		183	83.3		

Sawtimber Volume by Timber Type

Timber Type	# Trees	Volume	Avg BF/Tree	% of Total
Hardwood	687	389.7	567.3	99.3%
Pine	13	2.7	208.4	0.7%
Total	700	392.4	560.6	

Sawtimber Volume by DBH

DBH	# Trees	Volume	Avg BF/Tree	% of Total
12	4	0.5	113.0	0.1%
14	4	0.8	193.5	0.2%
16	7	1.7	247.0	0.4%
18	39	12.9	330.4	3.3%
20	183	78.7	430.2	20.1%
22	222	116.1	522.8	29.6%
24	131	86.7	661.8	22.1%
26	61	47.9	785.0	12.2%
28	30	26.1	869.3	6.6%
30	14	14.8	1,055.9	3.8%
32	2	2.7	1,346.5	0.7%
34	3	3.7	1,223.0	0.9%
Total	700	392.4	560.6	

Sawtimber Volume by Species

Species	# Trees	Volume	Avg BF/Tree	% of Total
Ash	2	0.4	180.0	0.1%
Hickory	33	15.5	468.8	3.9%
Loblolly/Shortleaf Pine	13	2.7	208.4	0.7%
Northern Red Oak	80	46.5	581.7	11.9%
Poplar	317	205.1	647.1	52.3%
Red Oak	39	21.0	539.3	5.4%
Scarlet Oak	33	17.9	541.4	4.6%
White Oak	183	83.3	455.3	21.2%
Total	700	392.4	560.6	

L & N Associates

Timber Marketing & Management, Inc.

Cruise Date: Monday, January 20, 2020
 Owner's Name: L & N Associates
 County/State: Louisa County, VA

White Oak - Veneer Doyle (Butt Log Scale)

DBH	Butt Log Length								# Logs	Volume	% of Total
	8'	10'	12'	14'	16'	18'	20'	22'			
18	1								1	52	1.2%
20	1		2		5				8	1,022	23.6%
22	4	3	2		2				11	1,432	33.1%
24	1	1	2						4	645	14.9%
26		3	1						4	837	19.3%
28								1	1	339	7.8%
Total	7	7	7		8				29	4,327	

28	1	339	339.0	7.8%
Total	29	4,327	149.2	

Veneer Volume by Species

Species	# Trees	Volume	Avg BF/Log	% of Total
White Oak	29	4,327	149.2	100.0%
Total	29	4,327	149.2	

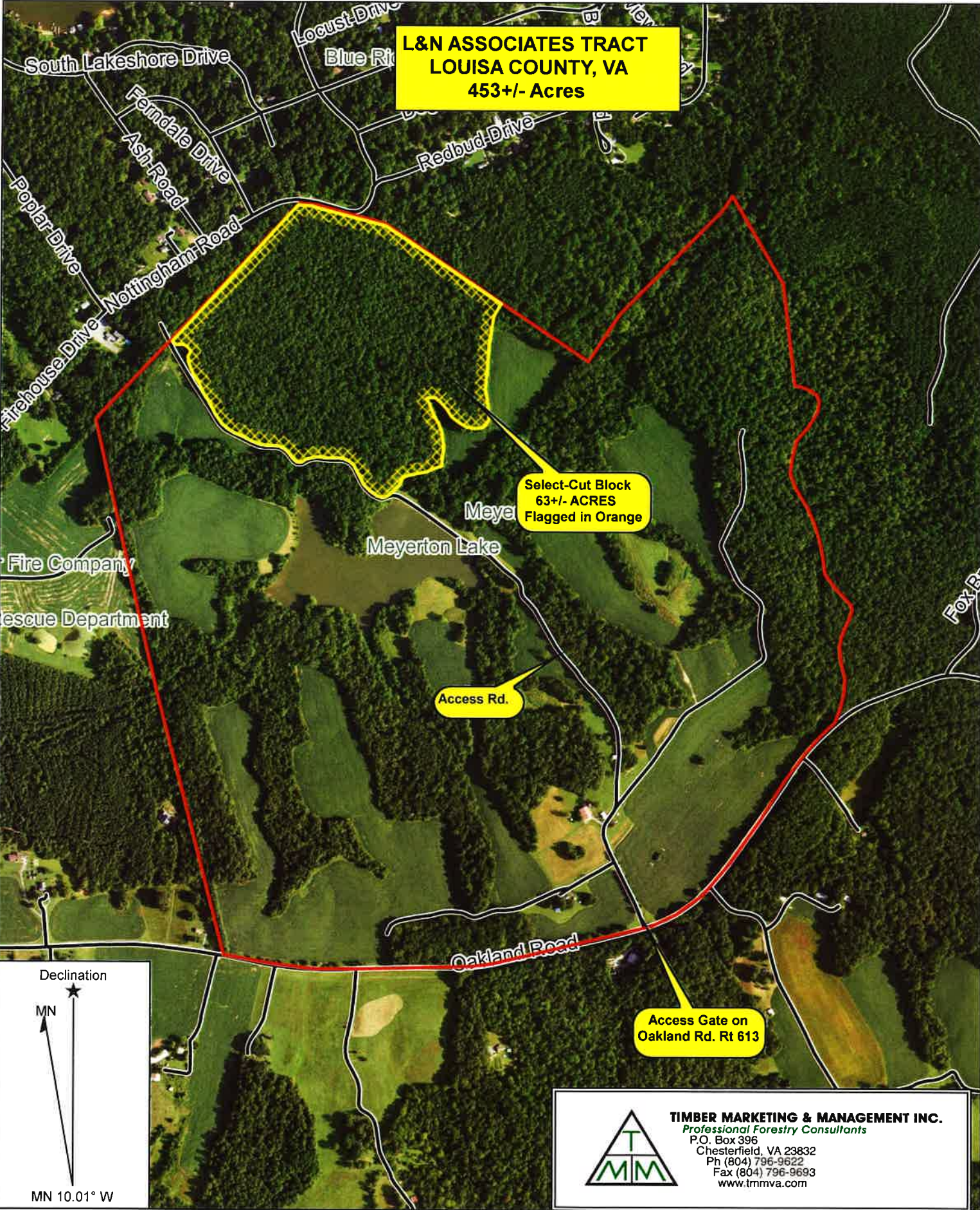
Veneer Tag List

Tag	Species	DBH	Butt Log Length
A1	White Oak	20	16'
A2	White Oak	22	16'
A3	White Oak	22	8'
A4	White Oak	20	16'
A5	White Oak	20	16'
A6	White Oak	20	16'
G1	White Oak	26	10'
G10	White Oak	24	8'
G11	White Oak	20	12'
G12	White Oak	22	10'
G2	White Oak	28	16'
G3	White Oak	26	10'
G4	White Oak	24	10'
G5	White Oak	22	8'
G6	White Oak	22	10'
G7	White Oak	22	8'
G8	White Oak	20	12'
G9	White Oak	20	8'
M1	White Oak	22	16'
M2	White Oak	22	12'
M3	White Oak	22	10'
M4	White Oak	20	16'
MS1	White Oak	26	10'
MS2	White Oak	22	12'
MS3	White Oak	24	12'
MS4	White Oak	24	12'
MS5	White Oak	26	12'
MS6	White Oak	18	8'
MS7	White Oak	22	8'

Veneer Volume by DBH

DBH	# Trees	Volume	Avg BF/Log	% of Total
18	1	52	52.0	1.2%
20	8	1,022	127.8	23.6%
22	11	1,432	130.2	33.1%
24	4	645	161.3	14.9%
26	4	837	209.3	19.3%

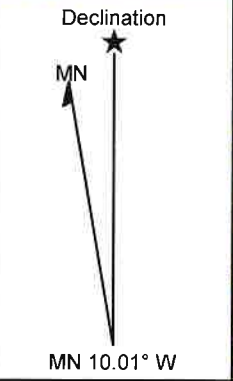
**L&N ASSOCIATES TRACT
LOUISA COUNTY, VA
453+/- Acres**



Select-Cut Block
63+/- ACRES
Flagged in Orange

Access Rd.

Access Gate on
Oakland Rd. Rt 613

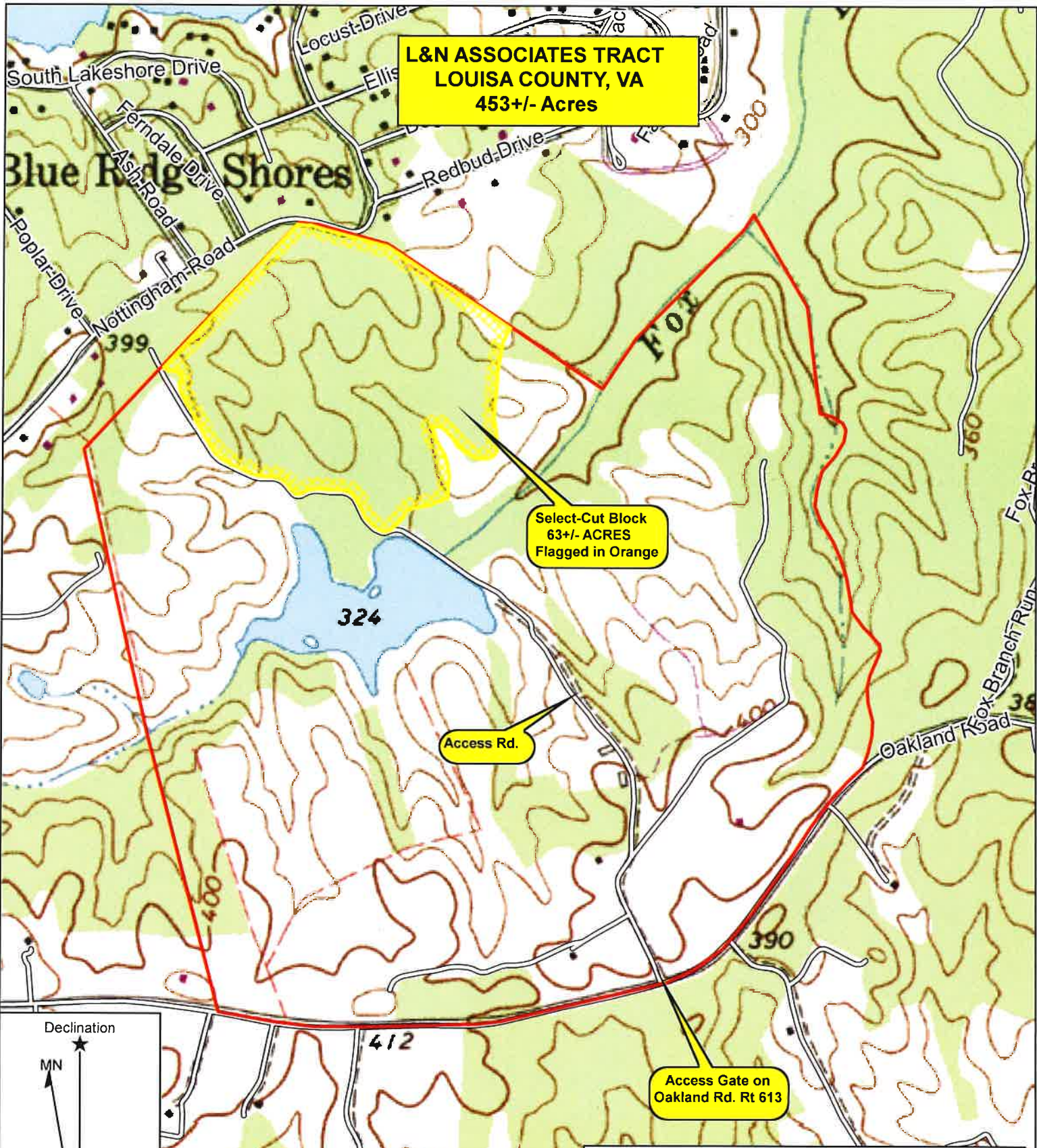


TIMBER MARKETING & MANAGEMENT INC.
Professional Forestry Consultants
P.O. Box 396
Chesterfield, VA 23832
Ph (804) 796-9622
Fax (804) 796-9693
www.tmmva.com

Name: L&N ASSOCIATES TRACT
Date: 02/05/20
Scale: 1 inch = 833 ft.

Location: 038° 05' 42.8376" N, 078° 01' 15.7406" W
63+/- Acre Select-Cut

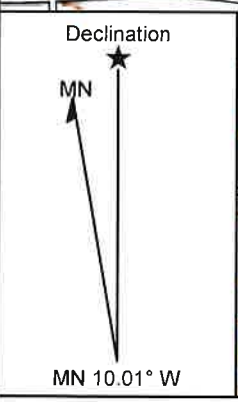
**L&N ASSOCIATES TRACT
LOUISA COUNTY, VA
453+/- Acres**



Select-Cut Block
63+/- ACRES
Flagged in Orange

Access Rd.

Access Gate on
Oakland Rd. Rt 613



TIMBER MARKETING & MANAGEMENT INC.
Professional Forestry Consultants
P.O. Box 396
Chesterfield, VA 23832
Ph (804) 796-9622
Fax (804) 796-9693
www.tmmva.com

Name: L&N ASSOCIATES TRACT
Date: 02/05/20
Scale: 1 inch = 833 ft.

Location: 038° 05' 43.2066" N, 078° 01' 14.1176" W
63+/- Acre Select-Cut

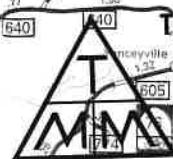
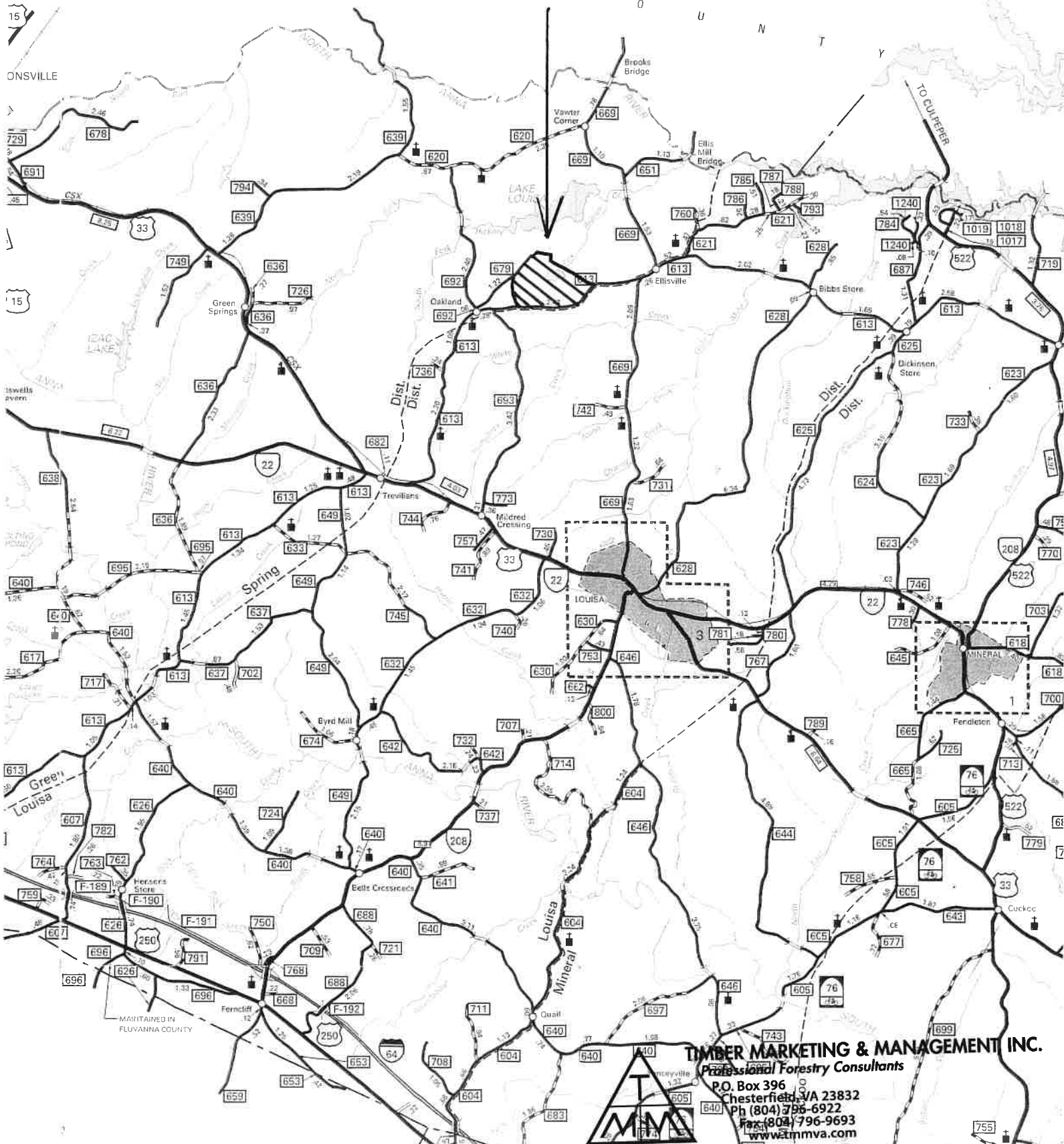
L & N ASSOCIATES L.C.

453+/- Acres

Louisa County, VA

O R A

C O U N T Y



TIMBER MARKETING & MANAGEMENT INC.
Professional Forestry Consultants
P.O. Box 396
Chesterfield, VA 23832
Ph (804) 796-6922
Fax (804) 796-9693
www.tmmva.com