

TIMBER MARKETING & MANAGEMENT INC.
Professional Forestry Consultants
 P.O. Box 396
 Chesterfield, VA 23832
 Ph (804) 796-9622
 Fax (804) 796-9693
 www.tmmva.com

Sale Date:	April 16, 2020
Time:	1:00 p.m.
Day:	Thursday
Total Vol./Acre:	14,628 B. F.
Pine Vol/Tree:	370 B. F.
Hdwd. Vol/Tree:	211 B. F.

SELECTIVE HARVEST

Having been employed by **Marshall & McQuade LLC** we solicit bids on blue markd timber only on **31 +/- acres** in **Henrico County, Virginia** and as shown on the attached map.

SAWTIMBER

We have made a 100% count of the sawtimber-size trees. Our estimate of their volume is:

Sawtimber

Loblolly Pine	170,000	Virginia Pine	3,000
Gum	101,700	Hickory	1,900
Red Oak	93,000	Beech	1,700
Poplar	38,100	Cedar	400
White Oak	29,600	Elm	200
Maple	13,600	Ash	200
		Black Walnut	<u>100</u>

Total: 453,500 BF Int 1/4" Scale

VENEER

Included in the volumes are high quality trees that, from our review, will be of high enough quality that a veneer cut can be obtained. The veneer volume is estimated to be:

Red Oak	1,253 BF Doyle Scale
White Oak	878 BF Doyle Scale

The above volumes are not guaranteed; however, care was taken in the field to assemble the above tables. You should note how your utilization practices may vary from the above and make any necessary adjustments.

CONDITIONS

1. The landowner assumes responsibility for compliance with the Virginia State Seed Tree Law.
2. A period of time of **18 months** will be allowed to cut and remove the timber.
3. **Temporary access** has been granted for harvesting the timber through the Douglas Property, north of the tract and as shown on the attached map.
4. Blue marked timber only to be harvestd from the SMZ's and Select Cut Area. It is understood that some pulpwood trees will need to be cut in order to harvest sawtimber trees, however, there will be no penalty assessed for cutting these trees.
5. Roads **must** be maintained during logging and restored to at least their original condition upon completion of the logging. Any newly constructed roads and decks must be left in a graded condition upon completion of logging. Any newly constructed haul roads, skid roads and log decks and all logging operations must be in accordance with the guidelines set out in the **Best Management Practices Manual** of the Virginia Department of Forestry.
6. No tops or laps will be allowed to remain in the streams, fields, buffers or over cutting boundaries. They must be pulled back into the sale area immediately.
7. No logging will be permitted during excessively wet weather conditions as determined by Timber Marketing & Management, Inc. If logging is halted due to weather conditions, then an extension of time equal to the time lost will be granted.

8. A \$2,500.00 performance bond will be paid at closing and held by Timber Marketing & Management, Inc. to insure compliance with all BMP requirements, road maintenance and conditions of the Timber Purchase Contract.

Only sealed bids will be accepted and owners reserve the right to reject any or all bids. BIDS SHOULD BE SUBMITTED PRIOR TO THE TIME OF BID OPENING AND CAN BE SUBMITTED VIA: Mail to: Timber Marketing & Management, Inc. P. O. Box 396, Chesterfield, Virginia 23832 **OR** hand delivered to 9520 Ironbridge Road, Chesterfield, Virginia **OR** telephoned in to 804-796-9622 **OR** faxed to 804-796-9693 **OR** emailed to tmm4u@aol.com Bids must be made on a lump-sum basis and must be received at this address no later than the posted bid date and time as shown on the cover. Closing shall take place within 30 days of bid acceptance.

There will be no scheduled show trip of the tract; however, you may call and set an appointment or you may inspect the property at your own leisure.

An electronic copy of this sale notice, including maps and volumes, is available for download and viewing on our website at www.tmmva.com under the Timber Sale Notices section.

Sincerely,
Timber Marketing & Management, Inc.



Mavin Williams, Asst. Area Manager & Field Supervisor
804-796-9622 Office
804-338-8458 Mobile

Marshall & McQuade, LLC - Long Bridge Tract

Timber Marketing & Management, Inc.

Professional Forestry Consultants

P.O. Box 396

Chesterfield, VA 23832-0000

Phone: (804) 796-9622 • Fax: (804) 796-9693

Sawtimber Cruise: 100.0%

Veneer Cruise: 100.0%

Cruise Date: Monday, January 20, 2020

Owner's Name: Marshall & McQuade, LLC

County/State: Henrico, VA

Acreage: 31+/-

Cruise Type: Tree Count

Harvest Type: Clear Cut

Total BF/Acre: 14,628

Pine Vol/Tree: 369.9

Hardwood Vol/Tree: 211.3

Volume Legend:

- 1) Diameters shown in inches (DBH)
- 2) Logs measured in 16' increments
- 3) Sawtimber volumes are shown in thousands of board feet (MBF)
- 4) Volume scale used for each species of sawtimber is noted
- 5) Pulpwood volumes are shown in standard cords (128 cubic feet)

Comments:

Ash - Sawtimber

International 1/4 Scale

Number of Logs								
DBH	1-Log	2-Log	3-Log	4-Log	5-Log	# Trees	Volume	% of Total
18		1				1	0.2	100.0%
Total		1				1	0.2	

Beech - Sawtimber

International 1/4 Scale

Number of Logs								
DBH	1-Log	2-Log	3-Log	4-Log	5-Log	# Trees	Volume	% of Total
12	2					2	0.1	6.6%
14	2					2	0.2	9.8%
16	4	1				5	0.6	37.5%
18	2	2				4	0.8	46.1%
Total	10	3				13	1.7	

Black Walnut - Sawtimber

International 1/4 Scale

Number of Logs								
DBH	1-Log	2-Log	3-Log	4-Log	5-Log	# Trees	Volume	% of Total
14	1					1	0.1	100.0%
Total	1					1	0.1	

Cedar - Sawtimber

International 1/4 Scale

Number of Logs								
DBH	1-Log	2-Log	3-Log	4-Log	5-Log	# Trees	Volume	% of Total
12	3					3	0.2	40.3%
14	3					3	0.2	59.7%
Total	6					6	0.4	

Elm - Sawtimber

International 1/4 Scale

Number of Logs								
DBH	1-Log	2-Log	3-Log	4-Log	5-Log	# Trees	Volume	% of Total
12	1					1	0.1	33.3%
16	1					1	0.1	66.7%
Total	2					2	0.2	

Gum - Sawtimber

International 1/4 Scale

Number of Logs								
DBH	1-Log	2-Log	3-Log	4-Log	5-Log	# Trees	Volume	% of Total
12	185	6				191	10.9	10.7%
14	19	138	32			189	27.0	26.5%
16	3	36	68	8		115	27.0	26.6%
18	3	14	44	14		75	24.3	23.9%
20	1	4	11	2		18	7.2	7.0%
22	1	2	7	1		11	5.3	5.2%
Total	212	200	162	25		599	101.7	

Hickory - Sawtimber

International 1/4 Scale

Number of Logs								
DBH	1-Log	2-Log	3-Log	4-Log	5-Log	# Trees	Volume	% of Total
12	5					5	0.3	15.0%
14	1	2				3	0.4	19.6%
16			2			2	0.5	27.4%
20	1					1	0.2	9.7%
22			1			1	0.5	28.3%
Total	7	2	3			12	1.9	

Loblolly Pine - Sawtimber

International 1/4 Scale

Number of Logs								
DBH	1-Log	2-Log	3-Log	4-Log	5-Log	# Trees	Volume	% of Total
10	6	5				11	0.5	0.3%
12	7	19	22			48	4.8	2.8%
14	3	15	21	11		50	8.6	5.1%
16	3	8	26	49		86	23.5	13.8%
18	1	7	13	49	7	77	28.9	17.0%
20		3	18	37	9	67	32.8	19.3%
22	1	1	14	17	7	40	24.0	14.1%
24			12	20	5	37	27.7	16.3%
26		2		8		10	8.6	5.0%
28		1	3	2		6	5.6	3.3%
30				2		2	2.5	1.5%
32		1				1	0.9	0.5%
38			1			1	1.8	1.0%
Total	21	62	130	195	28	436	170.0	

Marshall & McQuade, LLC - Long Bridge Tract

Timber Marketing & Management, Inc.

Cruise Date: Monday, January 20, 2020
 Owner's Name: Marshall & McQuade, LLC
 County/State: Henrico, VA

Maple - Sawtimber International 1/4 Scale

DBH	Number of Logs					# Trees	Volume	% of Total
	1-Log	2-Log	3-Log	4-Log	5-Log			
12	51					51	2.9	21.0%
14	34	9				43	4.1	30.1%
16	21	6	1			28	3.7	27.6%
18	6	2				8	1.4	10.0%
20	5	2				7	1.5	11.3%
Total	117	19	1			137	13.6	

Virginia Pine - Sawtimber International 1/4 Scale

DBH	Number of Logs					# Trees	Volume	% of Total
	1-Log	2-Log	3-Log	4-Log	5-Log			
10	7					7	0.3	8.3%
12	3	3				6	0.4	14.6%
14	2	2				4	0.4	14.8%
16		4				4	0.8	25.0%
18	3		1			4	0.8	25.3%
20	2					2	0.4	11.9%
Total	17	9	1			27	3.0	

Poplar - Sawtimber International 1/4 Scale

DBH	Number of Logs					# Trees	Volume	% of Total
	1-Log	2-Log	3-Log	4-Log	5-Log			
12	15	1				16	0.9	2.4%
14	9	16	1			26	3.2	8.4%
16	1	9	19			29	6.7	17.6%
18		2	16	1		19	6.3	16.5%
20		2	14	1		17	7.1	18.7%
22		2	7			9	4.5	11.7%
24		2	5	2		9	5.7	15.0%
26			3			3	2.3	6.0%
34			1			1	1.4	3.6%
Total	25	34	66	4		129	38.1	

White Oak - Sawtimber International 1/4 Scale

DBH	Number of Logs					# Trees	Volume	% of Total
	1-Log	2-Log	3-Log	4-Log	5-Log			
12	10					10	0.6	1.9%
14	7	4				11	1.1	3.9%
16	1	7	4			12	2.5	8.3%
18	1	5	1			7	1.7	5.8%
20	3	5	5			13	4.2	14.4%
22	1	6	4			11	4.7	15.7%
24	2	5	1			8	3.5	11.9%
26		5	5			10	6.6	22.4%
28	1	2	1			4	2.6	8.7%
32		1	1			2	2.1	7.0%
Total	26	40	22			88	29.6	

Red Oak - Sawtimber International 1/4 Scale

DBH	Number of Logs					# Trees	Volume	% of Total
	1-Log	2-Log	3-Log	4-Log	5-Log			
12	33					33	1.8	2.0%
14	35	32				67	7.4	8.0%
16	11	51	7			69	12.7	13.7%
18	9	34	4			47	11.1	11.9%
20	14	21	12			47	14.3	15.3%
22	3	17	19	1		40	17.9	19.3%
24		10	5			15	7.9	8.5%
26		9	7			16	10.4	11.2%
28	1	1				2	1.0	1.1%
30		1	2			3	2.9	3.1%
32			2			2	2.4	2.6%
36			2			2	3.1	3.4%
Total	106	176	60	1		343	93.0	

Marshall & McQuade, LLC - Long Bridge Tract

Timber Marketing & Management, Inc.

Cruise Date: Monday, January 20, 2020
 Owner's Name: Marshall & McQuade, LLC
 County/State: Henrico, VA

Sawtimber Volume by Timber Type

Timber Type	# Trees	Volume	Avg BF/Tree	% of Total
Hardwood	1,325	280.0	211.3	61.7%
Pine	469	173.5	369.9	38.3%
Total	1,794	453.5	252.8	

Sawtimber Volume by DBH

DBH	# Trees	Volume	Avg BF/Tree	% of Total
10	18	0.8	42.4	0.2%
12	366	22.9	62.7	5.1%
14	399	52.8	132.3	11.6%
16	351	78.1	222.6	17.2%
18	242	75.4	311.6	16.6%
20	172	67.6	393.3	14.9%
22	112	56.9	507.7	12.5%
24	69	44.8	649.5	9.9%
26	39	27.9	714.9	6.1%
28	12	9.2	763.2	2.0%
30	5	5.4	1,080.4	1.2%
32	5	5.4	1,075.8	1.2%
34	1	1.4	1,383.0	0.3%
36	2	3.1	1,571.0	0.7%
38	1	1.8	1,772.0	0.4%
Total	1,794	453.5	252.8	

Sawtimber Volume by Species

Species	# Trees	Volume	Avg BF/Tree	% of Total
Ash	1	0.2	248.0	0.1%
Beech	13	1.7	130.8	0.4%
Black Walnut	1	0.1	83.0	0.0%
Cedar	6	0.4	69.5	0.1%
Elm	2	0.2	84.0	0.0%
Gum	599	101.7	169.8	22.4%
Hickory	12	1.9	155.5	0.4%
Loblolly Pine	436	170.0	390.0	37.5%
Maple	137	13.6	99.2	3.0%
Poplar	129	38.1	295.0	8.4%
Red Oak	343	93.0	271.0	20.5%
Virginia Pine	27	3.0	112.4	0.7%
White Oak	88	29.6	336.4	6.5%
Total	1,794	453.5	252.8	

Red Oak - Veneer

Doyle (Butt Log Scale)

DBH	Butt Log Length								# Logs	Volume	% of Total
	8'	10'	12'	14'	16'	18'	20'	22'			
24			1						1	171	13.6%
32					1				1	467	37.3%
36					1				1	615	49.1%
Total			1		2				3	1,253	

White Oak - Veneer

Doyle (Butt Log Scale)

DBH	Butt Log Length								# Logs	Volume	% of Total
	8'	10'	12'	14'	16'	18'	20'	22'			
26					1				1	282	32.1%
28			1						1	246	28.0%
32			1						1	350	39.9%
Total			2		1				3	878	

Veneer Tag List

Tag	Species	DBH	Butt Log Length
G1	Red Oak	36	16'
G2	White Oak	26	16'
G3	Red Oak	32	16'
M1	White Oak	28	12'
M2	White Oak	32	12'
M3	Red Oak	24	12'

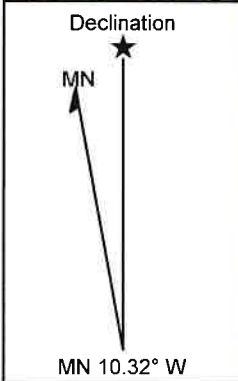
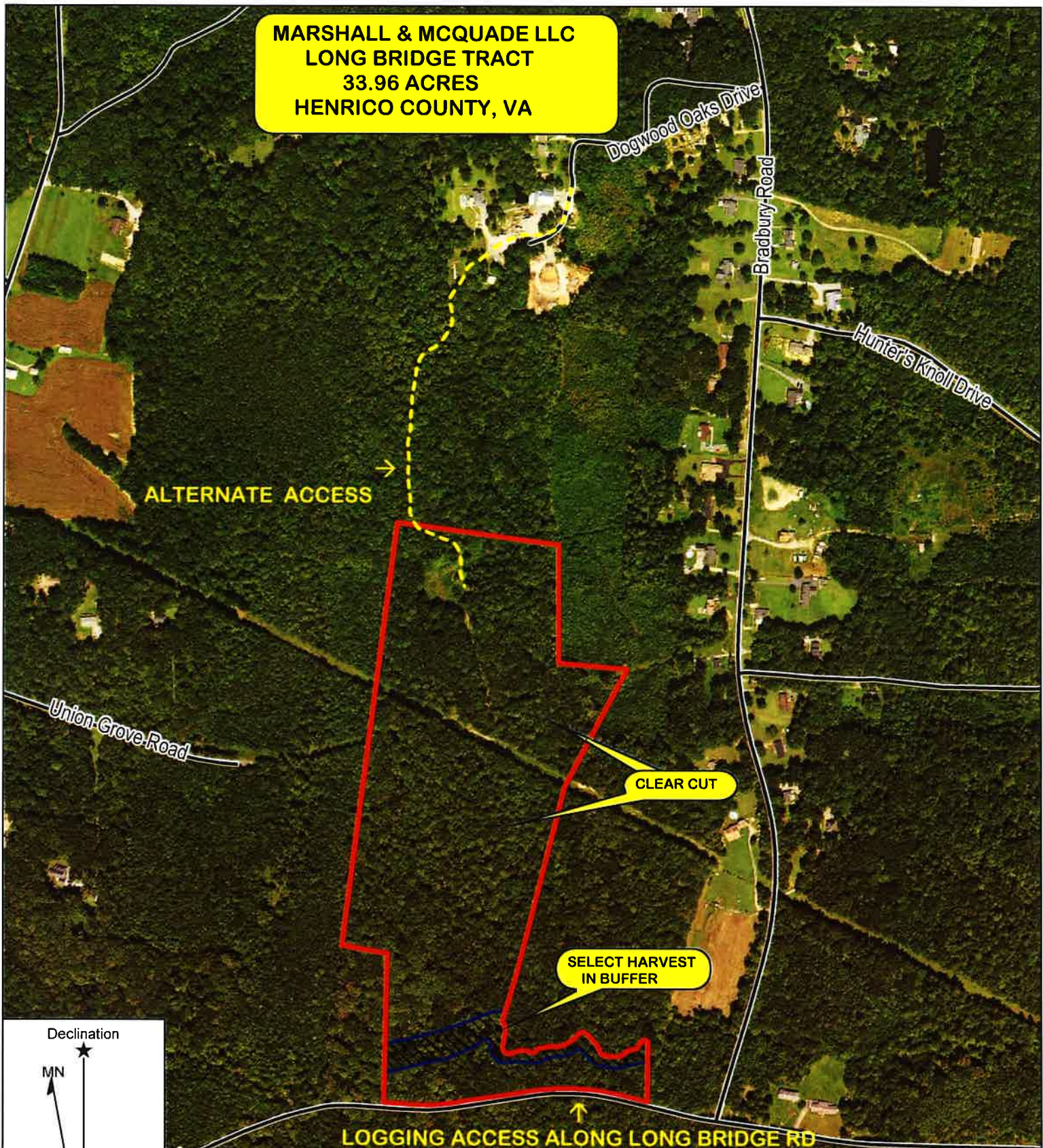
Veneer Volume by DBH

DBH	# Trees	Volume	Avg BF/Log	% of Total
24	1	171	171.0	8.0%
26	1	282	282.0	13.2%
28	1	246	246.0	11.5%
32	2	817	408.5	38.3%
36	1	615	615.0	28.9%
Total	6	2,131	355.2	

Veneer Volume by Species

Species	# Trees	Volume	Avg BF/Log	% of Total
Red Oak	3	1,253	417.7	58.8%
White Oak	3	878	292.7	41.2%
Total	6	2,131	355.2	

**MARSHALL & MCQUADE LLC
LONG BRIDGE TRACT
33.96 ACRES
HENRICO COUNTY, VA**

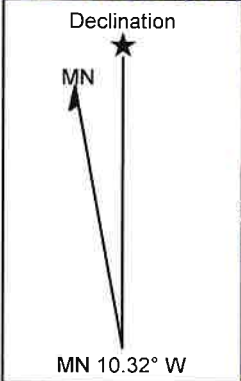
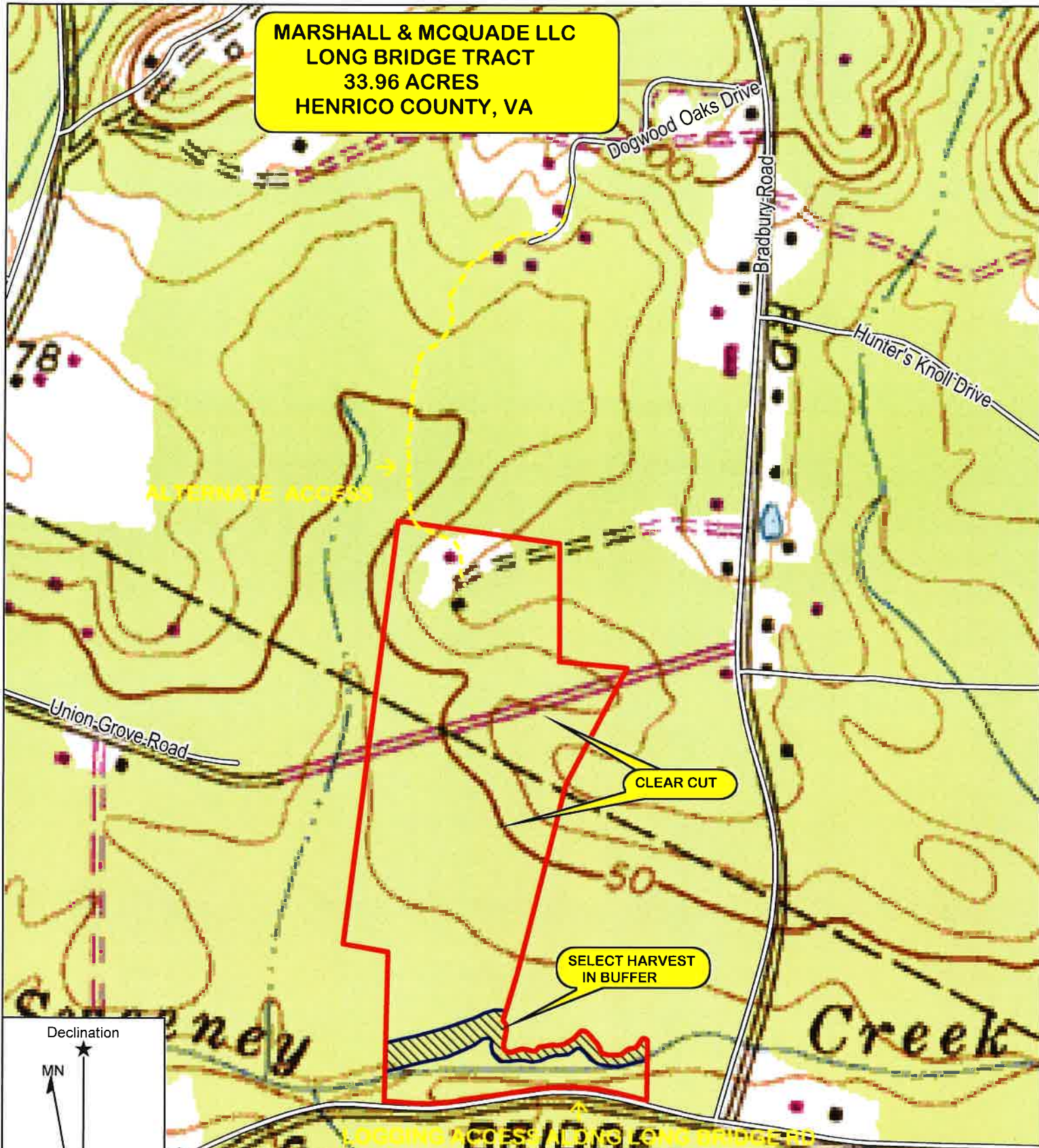


TIMBER MARKETING & MANAGEMENT INC.
Professional Forestry Consultants
P.O. Box 396
Chesterfield, VA 23832
Ph (804) 796-9622
Fax (804) 796-9693
www.tmmva.com

Name: Marshall & McQuade LLC
Date: 03/25/20
Scale: 1 inch = 500 ft.

Location: Henrico County, VA

**MARSHALL & MCQUADE LLC
LONG BRIDGE TRACT
33.96 ACRES
HENRICO COUNTY, VA**

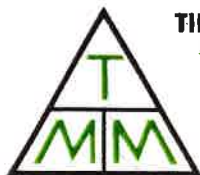
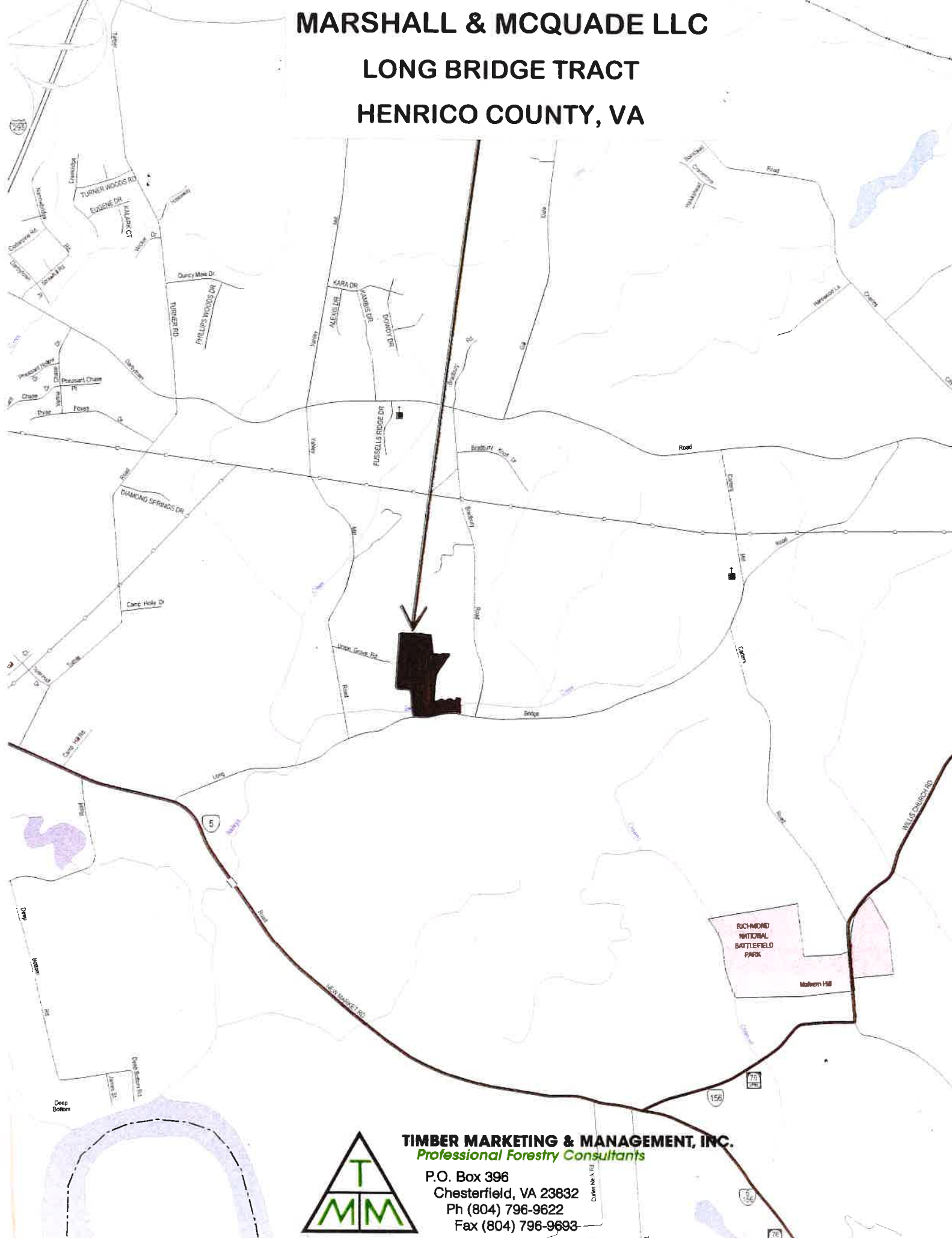


TIMBER MARKETING & MANAGEMENT INC.
Professional Forestry Consultants
P.O. Box 396
Chesterfield, VA 23832
Ph (804) 796-9622
Fax (804) 796-9693
www.tmmva.com

Name: Marshall & McQuade LLC
Date: 03/25/20
Scale: 1 inch = 500 ft.

Location: Henrico County, VA

MARSHALL & MCQUADE LLC
LONG BRIDGE TRACT
HENRICO COUNTY, VA



TIMBER MARKETING & MANAGEMENT, INC.
Professional Forestry Consultants

P.O. Box 396
Chesterfield, VA 23832
Ph (804) 796-9622
Fax (804) 796-9693

Circle No. 118