

**TIMBER MARKETING & MANAGEMENT INC.**

*Professional Forestry Consultants*

P.O. Box 396

Chesterfield, VA 23832

Ph (804) 796-9622

Fax (804) 796-9693

www.tmmva.com

<b>Sale Date:</b>	<b>April 29, 2021</b>	<b>April 29, 2021</b>
<b>Time:</b>	<b>2:00 p.m.</b>	<b>2:00 p.m.</b>
<b>Day:</b>	<b>Thursday</b>	<b>Thursday</b>
<b>BLOCK:</b>	<b>CC</b>	<b>SMZ</b>
<b>Total Vol./Acre:</b>	<b>20,060 B.F.</b>	<b>3,535 B.F.</b>
<b>Pine Vol/Tree:</b>	<b>194 B.F.</b>	<b>268 B.F.</b>
<b>Hdwd. Vol/Tree:</b>	<b>146 B.F.</b>	<b>273 B.F.</b>

**EXCELLENT QUALITY PINE SAWTIMBER**

Having been employed by **DONNA MISTR** we solicit bids on all merchantable timber on **93.76 +/- acres** in the **clear cut area** and on the blue marked timber only on **13.84 +/- acres** in the **SMZ's** and in **Amelia County, Virginia** and as shown on the attached map.

We made an 8% cruise of the pulpwood trees to be harvested. Our estimate of their volume is:

	<b>CC</b>	<b>Total</b>
<u>Pulpwood</u>	<u>Cords</u>	<u>Tons</u>
Pine	85	221
Soft Hardwood	160	416
Hard Hardwood	<u>36</u>	<u>94</u>
<b>Total:</b>	<b>281</b>	<b>731</b>

We made an 8% cruise of the Clear Cut Block and a 100% tree count in the SMZ's of the sawtimber-size trees to be harvested. Our estimate of their volume is:

<u>Sawtimber</u>	<u>CLEAR CUT</u>	<u>SMZ'S</u>	<u>Total</u>
Loblolly Pine	1,785,400	37,200	1,822,600
Poplar	88,600	10,500	99,100
White Oak	5,200	500	5,700
Gum	3,500	0	3,500
Hickory	2,400	0	2,400
Red Oak	700	1,000	1,700
Maple	<u>0</u>	<u>300</u>	<u>300</u>
<b>Totals:</b>	<b>1,885,800</b>	<b>49,500</b>	<b>1,935,300 BF Int 1/4" Scale</b>

The above volumes are not guaranteed; however, care was taken in the field to assemble the above tables. You should note how your utilization practices may vary from the above and make any necessary adjustments.

### Conditions

1. The landowner assumes responsibility for compliance with the Virginia State Seed Tree Law.
2. A period of time of **24 months** will be allowed to cut and remove the timber.
3. Roads **must** be maintained and restored to their original condition upon completion of the logging. Any newly constructed roads and decks must be left in a graded condition and must be seeded upon completion of logging. Any newly constructed haul roads, skid roads and log decks and all logging operations must be in accordance with the guidelines set out in the **Best Management Practices Manual** of the Virginia Department of Forestry.
4. No tops or laps will be allowed to remain in the streams, fields, buffers or over cutting boundaries. They must be pulled back immediately.
5. Only the blue marked trees are to be cut from Streamside Management Zones.
6. No logging will be permitted during excessively wet weather conditions as determined by Timber Marketing & Management, Inc. If logging is halted due to weather conditions, then an extension of time equal to the time lost will be granted.
7. A **\$2,000.00** performance bond will be paid at closing and held by Timber Marketing & Management, Inc. to insure compliance with all BMP requirements, road maintenance and conditions of the Timber Purchase Contract.
8. Landowner will accept a deferred payment plan as follows: 50% due at closing and 50% due in 90 days from closing or when logging begins, whichever occurs first.

Only sealed bids will be accepted and owners reserve the right to reject any or all bids. BIDS SHOULD BE SUBMITTED PRIOR TO THE TIME OF BID OPENING AND CAN BE SUBMITTED VIA: Mail to: Timber Marketing & Management, Inc. P. O. Box 396, Chesterfield, Virginia 23832 **OR** hand delivered to 9520 Ironbridge Road, Chesterfield, Virginia **OR** telephoned in to 804-796-9622 **OR** faxed to 804-796-9693 **OR** emailed to tmm4u@aol.com Bids must be made on a lump-sum basis and must be received at this address no later than the posted bid date and time as shown on the cover. Closing shall take place within 30 days of bid acceptance.

There will be no scheduled show trip of the tract; however, you may call and set an appointment or you may inspect the property at your own leisure.

An electronic copy of this sale notice, including maps and volumes, is available for download and viewing on our website at [www.tmmva.com](http://www.tmmva.com) under the Timber Sale Notices section.

Sincerely,  
Timber Marketing & Management, Inc.



Matt Sandman, Area Manager  
434-808-2102 mobile  
804-796-9622 office

**Mistr Clear Cut**

**Timber Marketing & Management, Inc.**

Professional Forestry Consultants

P.O. Box 396

Chesterfield, VA 23832-0000

Phone: (804) 796-9622 • Fax: (804) 796-9693

Pulpwood Cruise: 8.0%

Sawtimber Cruise: 8.0%

Cruise Date: Wednesday, April 07, 2021

Owner's Name: Donna Mistr

County/State: Amelia County, VA

Acreage: 94+/-

Cruise Type: Plot Cruise

Harvest Type: Clear Cut

Total BF/Acre: 20,060

Pine Vol/Tree: 193.8

Hardwood Vol/Tree: 145.9

**Volume Legend:**

- 1) Diameters shown in inches (DBH)
- 2) Logs measured in 16' increments
- 3) Sawtimber volumes are shown in thousands of board feet (MBF)
- 4) Volume scale used for each species of sawtimber is noted
- 5) Pulpwood volumes are shown in standard cords (128 cubic feet)

**Comments:**

**Pulpwood**

Standard Cord

DBH	Wood Classification							
	Pine		Soft Hardwood		Hard Hardwood		Cedar	
	# Trees	Volume	# Trees	Volume	# Trees	Volume	# Trees	Volume
6	63	3	975	38	150	6		
8	75	8	638	50	125	10		
10	363	60	450	60	88	12		
12	38	10	25	5	25	5		
14	13	5	25	7	13	3		
<b>Total</b>	<b>550</b>	<b>85</b>	<b>2,113</b>	<b>160</b>	<b>400</b>	<b>36</b>		

**Gum - Sawtimber**

International 1/4 Scale

DBH	Number of Logs					# Trees	Volume	% of Total
	1-Log	2-Log	3-Log	4-Log	5-Log			
12	13					13	0.7	20.0%
14	13	13				25	2.8	80.0%
<b>Total</b>	<b>25</b>	<b>13</b>				<b>38</b>	<b>3.5</b>	

**Hickory - Sawtimber**

International 1/4 Scale

DBH	Number of Logs					# Trees	Volume	% of Total
	1-Log	2-Log	3-Log	4-Log	5-Log			
16		13				13	2.4	100.0%
<b>Total</b>		<b>13</b>				<b>13</b>	<b>2.4</b>	

**Loblolly Pine - Sawtimber**

International 1/4 Scale

DBH	Number of Logs					# Trees	Volume	% of Total
	1-Log	2-Log	3-Log	4-Log	5-Log			
10	350	225				575	25.9	1.4%
12	100	700	1,275			2,075	223.0	12.5%
14		238	2,850	213		3,300	609.5	34.1%
16	13	138	1,750	463		2,363	616.6	34.5%
18	13	75	575	150		813	273.9	15.3%
20		13	50	13		75	31.7	1.8%
22		13				13	4.8	0.3%
<b>Total</b>	<b>475</b>	<b>1,400</b>	<b>6,500</b>	<b>838</b>		<b>9,213</b>	<b>1,785.4</b>	

**Poplar - Sawtimber**

International 1/4 Scale

DBH	Number of Logs					# Trees	Volume	% of Total
	1-Log	2-Log	3-Log	4-Log	5-Log			
12	250					250	14.0	15.8%
14	13	125				138	18.7	21.1%
16		88	13			100	19.8	22.4%
18		25	38			63	18.8	21.2%
20			25			25	10.7	12.1%
22			13			13	6.6	7.5%
<b>Total</b>	<b>263</b>	<b>238</b>	<b>88</b>			<b>588</b>	<b>88.6</b>	

**Red Oak - Sawtimber**

International 1/4 Scale

DBH	Number of Logs					# Trees	Volume	% of Total
	1-Log	2-Log	3-Log	4-Log	5-Log			
12	13					13	0.7	100.0%
<b>Total</b>	<b>13</b>					<b>13</b>	<b>0.7</b>	

**White Oak - Sawtimber**

International 1/4 Scale

DBH	Number of Logs					# Trees	Volume	% of Total
	1-Log	2-Log	3-Log	4-Log	5-Log			
16	25	13				38	5.2	100.0%
<b>Total</b>	<b>25</b>	<b>13</b>				<b>38</b>	<b>5.2</b>	

---

## Mistr Clear Cut

---

### Timber Marketing & Management, Inc.

Cruise Date: Wednesday, April 07, 2021  
Owner's Name: Donna Mistr  
County/State: Amelia County, VA

#### Sawtimber Volume by Timber Type

<u>Timber Type</u>	<u># Trees</u>	<u>Volume</u>	<u>Avg BF/Tree</u>	<u>% of Total</u>
Hardwood	688	100.3	145.9	5.3%
Pine	9,213	1,785.4	193.8	94.7%
Total	9,900	1,885.7	190.5	

#### Sawtimber Volume by DBH

<u>DBH</u>	<u># Trees</u>	<u>Volume</u>	<u>Avg BF/Tree</u>	<u>% of Total</u>
10	575	25.9	45.0	1.4%
12	2,350	238.4	101.4	12.6%
14	3,463	631.0	182.2	33.5%
16	2,513	644.0	256.3	34.2%
18	875	292.7	334.5	15.5%
20	100	42.4	423.5	2.2%
22	25	11.4	457.5	0.6%
Total	9,900	1,885.7	190.5	

#### Sawtimber Volume by Species

<u>Species</u>	<u># Trees</u>	<u>Volume</u>	<u>Avg BF/Tree</u>	<u>% of Total</u>
Gum	38	3.5	93.3	0.2%
Hickory	13	2.4	190.0	0.1%
Loblolly Pine	9,213	1,785.4	193.8	94.7%
Poplar	588	88.6	150.7	4.7%
Red Oak	13	0.7	56.0	0.0%
White Oak	38	5.2	138.0	0.3%
Total	9,900	1,885.7	190.5	

## Mistr SMZs

### Timber Marketing & Management, Inc.

Professional Forestry Consultants

P.O. Box 396

Chesterfield, VA 23832-0000

Phone: (804) 796-9622 • Fax: (804) 796-9693

Sawtimber Cruise: 100.0%

Cruise Date: Thursday, April 01, 2021  
 Owner's Name: Mistr  
 County/State: Amelia County, VA  
 Acreage: 14+/-  
 Cruise Type: Tree Count  
 Harvest Type: Select Cut  
 Total BF/Acre: 3,535  
 Pine Vol/Tree: 267.7  
 Hardwood Vol/Tree: 272.8

#### Volume Legend:

- 1) Diameters shown in inches (DBH)
- 2) Logs measured in 16' increments
- 3) Sawtimber volumes are shown in thousands of board feet (MBF)
- 4) Volume scale used for each species of sawtimber is noted
- 5) Pulpwood volumes are shown in standard cords (128 cubic feet)

#### Comments:

#### Loblolly Pine - Sawtimber International 1/4 Scale

Number of Logs								
DBH	1-Log	2-Log	3-Log	4-Log	5-Log	# Trees	Volume	% of Total
12		2				2	0.2	0.5%
14	3	17	15			35	5.4	14.6%
16	1	5	29	7		42	10.6	28.5%
18	2	7	32	5		46	14.8	39.7%
20	1	1	7	3		12	5.0	13.5%
22			1	1		2	1.2	3.1%
<b>Total</b>	<b>7</b>	<b>32</b>	<b>84</b>	<b>16</b>		<b>139</b>	<b>37.2</b>	

#### Maple - Sawtimber International 1/4 Scale

Number of Logs								
DBH	1-Log	2-Log	3-Log	4-Log	5-Log	# Trees	Volume	% of Total
16	1	1				2	0.3	100.0%
<b>Total</b>	<b>1</b>	<b>1</b>				<b>2</b>	<b>0.3</b>	

#### Poplar - Sawtimber International 1/4 Scale

Number of Logs								
DBH	1-Log	2-Log	3-Log	4-Log	5-Log	# Trees	Volume	% of Total
14	3	2				5	0.5	5.1%
16	1	13	2			16	3.1	29.5%
18	1	6	3			10	2.6	25.2%
20		1	2			3	1.2	11.1%
22		1				1	0.4	3.7%
24		1	2			3	1.8	16.8%
28			1			1	0.9	8.6%
<b>Total</b>	<b>5</b>	<b>24</b>	<b>10</b>			<b>39</b>	<b>10.5</b>	

#### Red Oak - Sawtimber International 1/4 Scale

Number of Logs								
DBH	1-Log	2-Log	3-Log	4-Log	5-Log	# Trees	Volume	% of Total
24	1					1	0.3	25.8%
26			1			1	0.8	74.2%
<b>Total</b>	<b>1</b>		<b>1</b>			<b>2</b>	<b>1.0</b>	

#### White Oak - Sawtimber International 1/4 Scale

Number of Logs								
DBH	1-Log	2-Log	3-Log	4-Log	5-Log	# Trees	Volume	% of Total
18	1					1	0.1	31.4%
20			1			1	0.3	68.6%
<b>Total</b>	<b>1</b>		<b>1</b>			<b>2</b>	<b>0.5</b>	

#### Sawtimber Volume by Timber Type

Timber Type	# Trees	Volume	Avg BF/Tree	% of Total
Hardwood	45	12.3	272.8	24.8%
Pine	139	37.2	267.7	75.2%
<b>Total</b>	<b>184</b>	<b>49.5</b>	<b>269.0</b>	

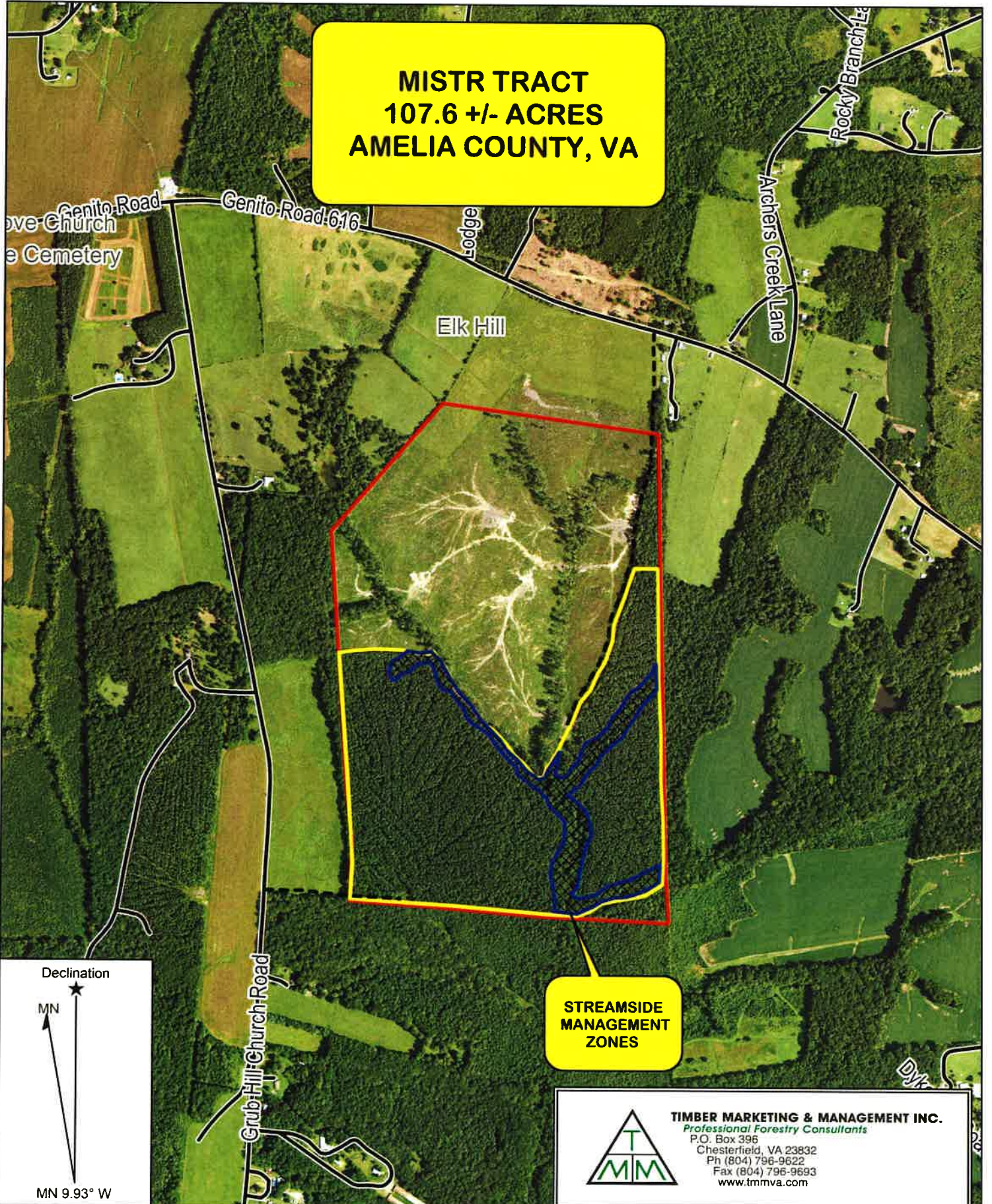
#### Sawtimber Volume by DBH

DBH	# Trees	Volume	Avg BF/Tree	% of Total
12	2	0.2	92.0	0.4%
14	40	6.0	149.2	12.1%
16	60	14.0	233.6	28.3%
18	57	17.6	308.2	35.5%
20	16	6.5	406.4	13.1%
22	3	1.6	517.7	3.1%
24	4	2.0	505.8	4.1%
26	1	0.8	767.0	1.5%
28	1	0.9	904.0	1.8%
<b>Total</b>	<b>184</b>	<b>49.5</b>	<b>269.0</b>	

#### Sawtimber Volume by Species

Species	# Trees	Volume	Avg BF/Tree	% of Total
Loblolly Pine	139	37.2	267.7	75.2%
Maple	2	0.3	151.0	0.6%
Poplar	39	10.5	268.7	21.2%
Red Oak	2	1.0	516.5	2.1%
White Oak	2	0.5	229.0	0.9%
<b>Total</b>	<b>184</b>	<b>49.5</b>	<b>269.0</b>	

**MISTR TRACT  
107.6 +/- ACRES  
AMELIA COUNTY, VA**



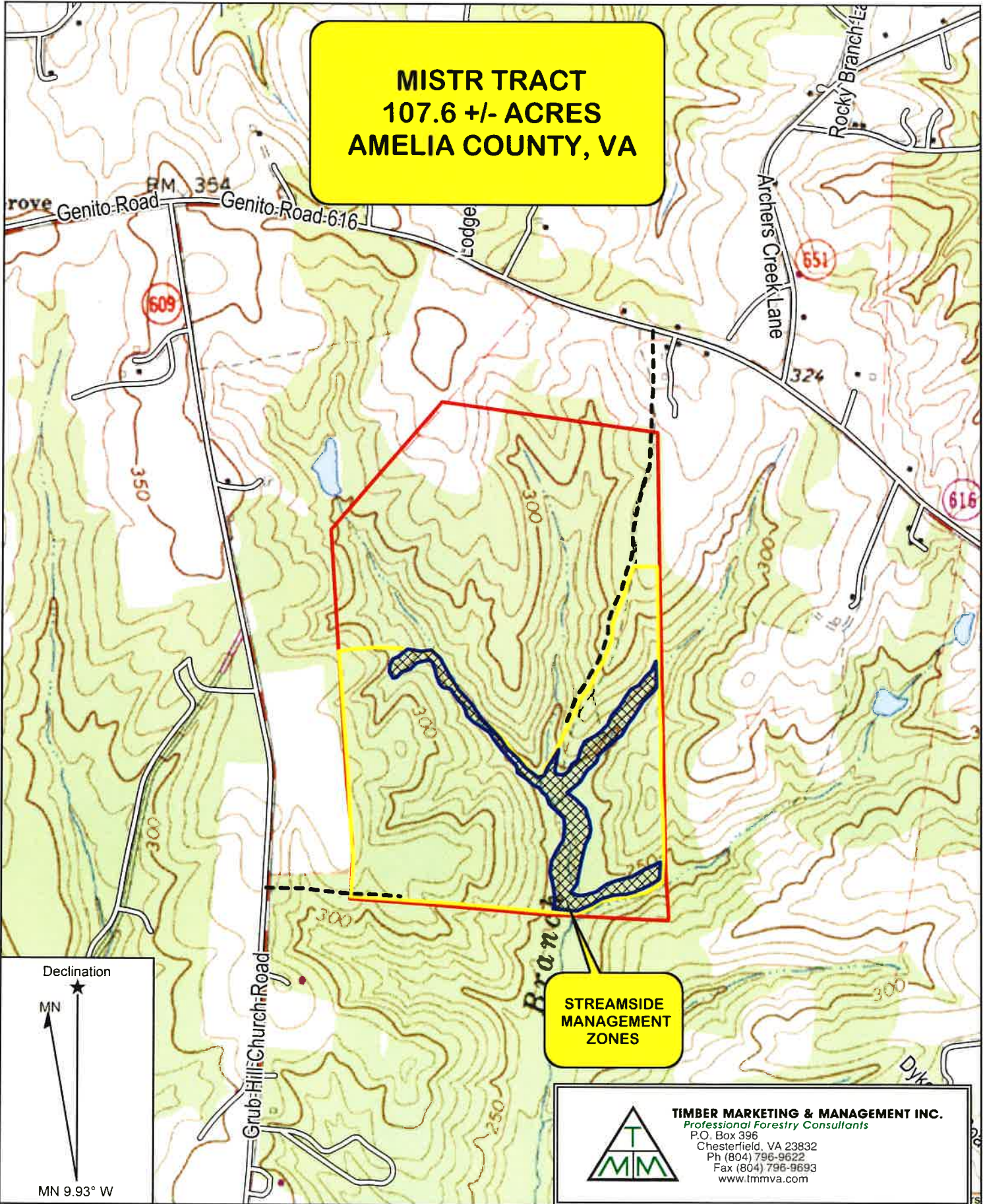
**STREAMSIDE  
MANAGEMENT  
ZONES**

**TIMBER MARKETING & MANAGEMENT INC.**  
*Professional Forestry Consultants*  
P.O. Box 396  
Chesterfield, VA 23832  
Ph (804) 796-9622  
Fax (804) 796-9693  
[www.tmmva.com](http://www.tmmva.com)

Name: Mistr Tract  
Date: April 1, 2021  
Scale: 1 inch = 1,000 ft.

Location: Amelia County, VA  
93.76 Acres Clearcut  
13.84 Acres SMZs

**MISTR TRACT  
107.6 +/- ACRES  
AMELIA COUNTY, VA**



**STREAMSIDE  
MANAGEMENT  
ZONES**

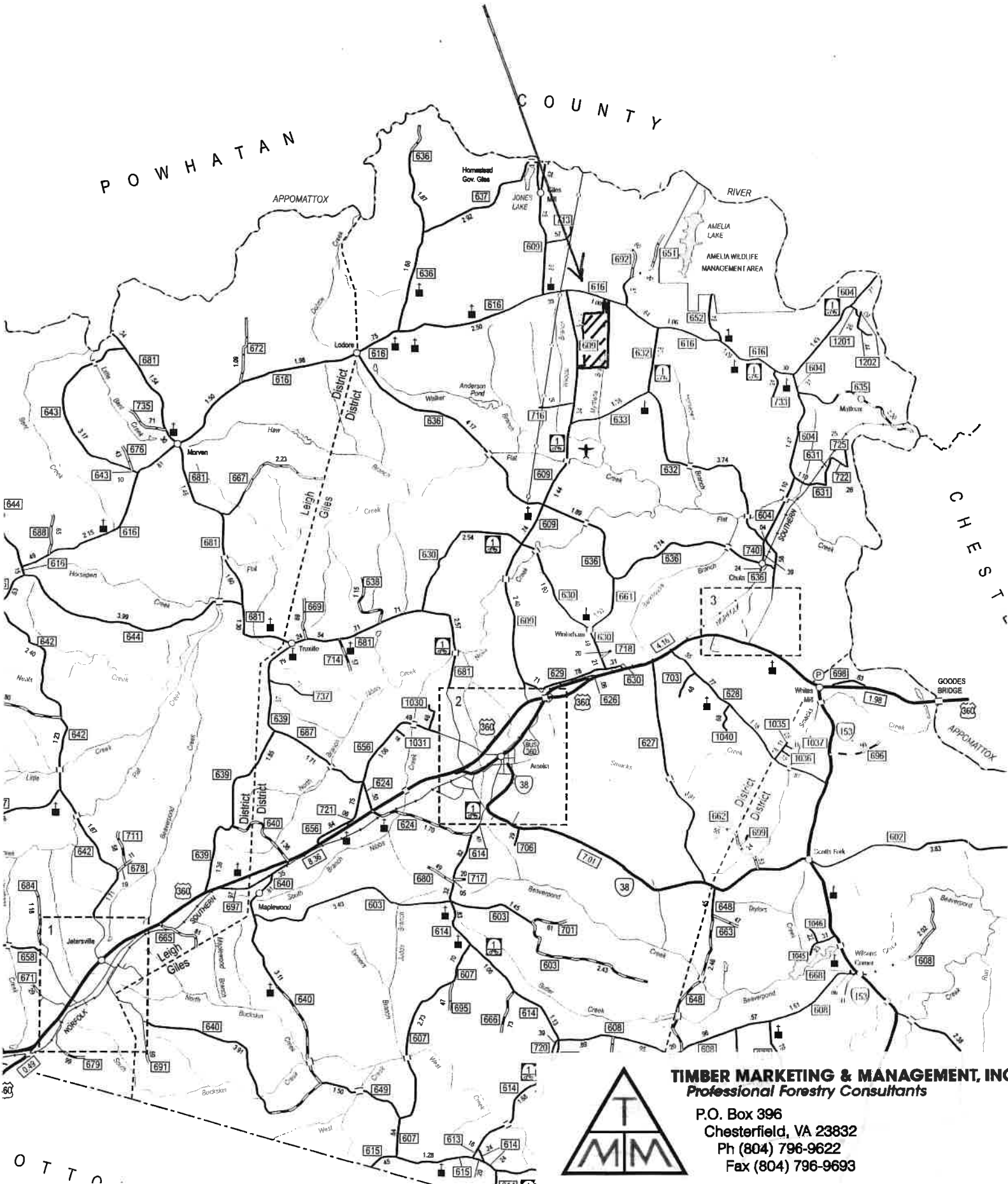
**TIMBER MARKETING & MANAGEMENT INC.**  
*Professional Forestry Consultants*  
P.O. Box 396  
Chesterfield, VA 23832  
Ph (804) 796-9622  
Fax (804) 796-9693  
www.tmmva.com

Name: Mistr Tract  
Date: April 1, 2021  
Scale: 1 inch = 1,000 ft.

Location: Amelia County, VA  
93.76 Acres Clearcut  
13.84 Acres SMZs

# MISTR PROPERTY

AMELIA COUNTY, VA



**TIMBER MARKETING & MANAGEMENT, INC**  
*Professional Forestry Consultants*

P.O. Box 396  
Chesterfield, VA 23832  
Ph (804) 796-9622  
Fax (804) 796-9693

