**TIMBER MARKETING & MANAGEMENT INC.***Professional Forestry Consultants*

P.O. Box 396

Chesterfield, VA 23832

Ph (804) 796-9622

Fax (804) 796-9693

www.tmmva.com

Sale Date:	<b>July 1, 2021</b>
Time:	11:00 a.m.
Day:	Thursday
Total Vol./Acre:	18,216 B. F.
Pine Vol/Tree:	118 B. F.
Hdwd. Vol/Tree:	325 B. F.

## CLEAR- CUT SALE EXCELLENT QUALITY HARDWOOD

Having been employed by **Thomas Moore** we solicit bids on all merchantable timber on **20 +/- acres** in **Cumberland County, Virginia** and as shown on the attached map.

We made a 5% plot cruise of the pulpwood trees to be harvested. Our estimate of their volume is:

<u>Pulpwood</u>	<u>Cords</u>	<u>Tons</u>
Pine	3	8
Soft Hardwood	44	114
Hard Hardwood	50	130
Hardwood Topwood Estimate	111	309
Pine Topwood Estimate	<u>4</u>	<u>10</u>
<b>Total:</b>	<b>212</b>	<b>571</b>

We have made a 100% count of the sawtimber-size trees to be harvested. Our estimate of their volume is:

<u>Sawtimber</u>			
Poplar	190,100	Misc. Hardwood	800
White Oak	65,800	Loblolly/Shortleaf Pine	700
Northern Red Oak	33,200	Sycamore	700
Gum	27,700	Beech	500
Red Oak	21,300	Scarlet Oak	300
Hickory	14,600	Ash	100
Maple	4,600	Black Walnut	<u>100</u>
Virginia Pine	4,000	<b>Total:</b>	<b>364,500 BF Int 1/4" Scale</b>

The above volumes are not guaranteed; however, care was taken in the field to assemble the above tables. You should note how your utilization practices may vary from the above and make any necessary adjustments.

### Conditions

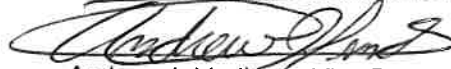
1. A period of time of 24 months will be allowed to cut and remove the timber.
2. Roads **must** be maintained and restored to their original condition upon completion of the logging. Any newly constructed roads and decks must be left in a graded condition and must be seeded upon completion of logging. Any newly constructed haul roads, skid roads and log decks and all logging operations must be in accordance with the guidelines set out in the **Best Management Practices Manual** of the Virginia Department of Forestry.
3. No tops or laps will be allowed to remain in the streams, fields, buffers or over cutting boundaries. They must be pulled back immediately.
4. Only the blue marked trees are to be cut from Streamside Management Zones.
5. No logging will be permitted during excessively wet weather conditions as determined by Timber Marketing & Management, Inc. If logging is halted due to weather conditions, then an extension of time equal to the time lost will be granted.
6. A \$2,000.00 performance bond will be paid at closing and held by Timber Marketing & Management, Inc. to insure compliance with all BMP requirements, road maintenance and conditions of the Timber Purchase Contract.
7. The landowner will move the cattle to a different pasture during the timber harvest.
8. The cattle fence inside the clear cut area does not have to be maintained. All fences on the perimeter of the property must be maintained.

Only sealed bids will be accepted and owners reserve the right to reject any or all bids. BIDS SHOULD BE SUBMITTED PRIOR TO THE TIME OF BID OPENING AND CAN BE SUBMITTED VIA: Mail to: Timber Marketing & Management, Inc. P. O. Box 396, Chesterfield, Virginia 23832 **OR** hand delivered to 9520 Ironbridge Road, Chesterfield, Virginia **OR** telephoned in to 804-796-9622 **OR** faxed to 804-796-9693 **OR** emailed to tmm4u@aol.com Bids must be made on a lump-sum basis and must be received at this address no later than the posted bid date and time as shown on the cover. Closing shall take place within 30 days of bid acceptance.

There will be no scheduled show trip of the tract; however, you may call and set an appointment or you may inspect the property at your own leisure.

An electronic copy of this sale notice, including maps and volumes, is available for download and viewing on our website at [www.tmmva.com](http://www.tmmva.com) under the Timber Sale Notices section.

Sincerely,  
Timber Marketing & Management, Inc.



Andrew J. Lindberg, Vice President  
804-338-8436 mobile  
804-796-9622 office

## Moore Tract

### Timber Marketing & Management, Inc.

Professional Forestry Consultants

P.O. Box 396

Chesterfield, VA 23832-0000

Phone: (804) 796-9622 • Fax: (804) 796-9693

Pulpwood Cruise: 5.0%

Sawtimber Cruise: 100.0%

Cruise Date: Friday, June 04, 2021  
 Owner's Name: T. Moore  
 County/State: Cumberland County, VA  
 Acreage: 20+/-  
 Cruise Type: Tree Count  
 Harvest Type: Clear Cut  
 Total BF/Acre: 18,216  
 Pine Vol/Tree: 118.3  
 Hardwood Vol/Tree: 324.8

#### Volume Legend:

- 1) Diameters shown in inches (DBH)
- 2) Logs measured in 16' increments
- 3) Sawtimber volumes are shown in thousands of board feet (MBF)
- 4) Volume scale used for each species of sawtimber is noted
- 5) Pulpwood volumes are shown in standard cords (128 cubic feet)

#### Comments:

#### Pulpwood

Standard Cord

DBH	Wood Classification							
	Pine		Soft Hardwood		Hard Hardwood		Cedar	
	# Trees	Volume	# Trees	Volume	# Trees	Volume	# Trees	Volume
6			260	10	160	6		
8			140	11	120	9		
10	20	3	140	19	200	27		
12			20	4	40	8		
<b>Total</b>	<b>20</b>	<b>3</b>	<b>560</b>	<b>44</b>	<b>520</b>	<b>50</b>		

#### Ash - Sawtimber

International 1/4 Scale

DBH	Number of Logs					# Trees	Volume	% of Total
	1-Log	2-Log	3-Log	4-Log	5-Log			
12	1					1	0.1	100.0%
<b>Total</b>	<b>1</b>					<b>1</b>	<b>0.1</b>	

#### Beech - Sawtimber

International 1/4 Scale

DBH	Number of Logs					# Trees	Volume	% of Total
	1-Log	2-Log	3-Log	4-Log	5-Log			
12	2					2	0.1	24.8%
14	1					1	0.1	18.4%
16	1					1	0.1	24.8%
18	1					1	0.1	31.9%
<b>Total</b>	<b>5</b>					<b>5</b>	<b>0.5</b>	

#### Black Walnut - Sawtimber

International 1/4 Scale

DBH	Number of Logs					# Trees	Volume	% of Total
	1-Log	2-Log	3-Log	4-Log	5-Log			
16	1					1	0.1	100.0%
<b>Total</b>	<b>1</b>					<b>1</b>	<b>0.1</b>	

#### Gum - Sawtimber

International 1/4 Scale

DBH	Number of Logs					# Trees	Volume	% of Total
	1-Log	2-Log	3-Log	4-Log	5-Log			
12	27					27	1.5	5.5%
14	13	25				38	4.6	16.6%
16	7	14	11			32	6.3	22.6%
18	1	17	10			28	7.7	27.8%
20		1	3			4	1.6	5.8%
22	2	2	3			7	2.8	10.1%
24		1	1			2	1.1	4.0%
26	1					1	0.3	1.1%
28			2			2	1.8	6.5%
<b>Total</b>	<b>51</b>	<b>60</b>	<b>30</b>			<b>141</b>	<b>27.7</b>	

#### Hickory - Sawtimber

International 1/4 Scale

DBH	Number of Logs					# Trees	Volume	% of Total
	1-Log	2-Log	3-Log	4-Log	5-Log			
12	21					21	1.2	8.1%
14	4	12				16	2.0	13.9%
16	5	14	4			23	4.2	29.1%
18		11	1			12	3.1	21.0%
20		6				6	1.9	12.9%
22		3				3	1.2	8.0%
24		1				1	0.5	3.2%
26		1				1	0.6	3.8%
<b>Total</b>	<b>30</b>	<b>48</b>	<b>5</b>			<b>83</b>	<b>14.6</b>	

#### Loblolly/Shortleaf Pine - Sawtimber

International 1/4 Scale

DBH	Number of Logs					# Trees	Volume	% of Total
	1-Log	2-Log	3-Log	4-Log	5-Log			
10	1					1	0.0	4.9%
12	1	1				2	0.1	19.9%
14			3			3	0.6	75.2%
<b>Total</b>	<b>2</b>	<b>1</b>	<b>3</b>			<b>6</b>	<b>0.7</b>	

**Moore Tract**

**Timber Marketing & Management, Inc.**

Cruise Date: Friday, June 04, 2021  
 Owner's Name: T. Moore  
 County/State: Cumberland County, VA

**Maple - Sawtimber** International 1/4 Scale

DBH	Number of Logs					# Trees	Volume	% of Total
	1-Log	2-Log	3-Log	4-Log	5-Log			
12	7					7	0.4	8.6%
14	7	2				9	0.9	18.9%
16	4	2				6	0.8	18.1%
18	5					5	0.7	15.8%
20	2	1				3	0.7	14.8%
22		2				2	0.8	16.9%
26	1					1	0.3	6.9%
<b>Total</b>	<b>26</b>	<b>7</b>				<b>33</b>	<b>4.6</b>	

**Miscellaneous Hardwood - Sawtimber** International 1/4 Scale

DBH	Number of Logs					# Trees	Volume	% of Total
	1-Log	2-Log	3-Log	4-Log	5-Log			
12	4					4	0.2	28.4%
14	2					2	0.2	21.0%
16	1					1	0.1	14.2%
18	2					2	0.3	36.5%
<b>Total</b>	<b>9</b>					<b>9</b>	<b>0.8</b>	

**Northern Red Oak - Sawtimber** International 1/4 Scale

DBH	Number of Logs					# Trees	Volume	% of Total
	1-Log	2-Log	3-Log	4-Log	5-Log			
12	2					2	0.1	0.3%
14	3	7				10	1.2	3.7%
16	2	7	1			10	1.8	5.5%
18	1	8	3			12	3.1	9.5%
20	3	6	4			13	4.1	12.5%
22		5	2			7	3.0	9.0%
24		4	4			8	4.5	13.4%
26			4			4	3.1	9.2%
28		2	2			4	3.1	9.4%
30		2	1			3	2.6	7.7%
32			1			1	1.2	3.7%
34		1	1			2	2.4	7.1%
36			1			1	1.6	4.7%
40		1				1	1.4	4.2%
<b>Total</b>	<b>11</b>	<b>43</b>	<b>24</b>			<b>78</b>	<b>33.2</b>	

**Poplar - Sawtimber** International 1/4 Scale

DBH	Number of Logs					# Trees	Volume	% of Total
	1-Log	2-Log	3-Log	4-Log	5-Log			
12	29					29	1.6	0.9%
14	5	30	3			38	5.2	2.7%
16	2	13	44	1		60	14.3	7.5%
18	2	13	43	14		72	23.6	12.4%
20	2	8	47	13		70	29.6	15.6%
22	2	12	33	13		60	30.8	16.2%
24	2	10	35	14		61	38.6	20.3%
26		1	21	4		26	20.4	10.7%
28		2	11	1		14	12.3	6.5%
30		1	10			11	11.3	5.9%
32			2			2	2.4	1.3%
<b>Total</b>	<b>44</b>	<b>90</b>	<b>249</b>	<b>60</b>		<b>443</b>	<b>190.1</b>	

**Red Oak - Sawtimber** International 1/4 Scale

DBH	Number of Logs					# Trees	Volume	% of Total
	1-Log	2-Log	3-Log	4-Log	5-Log			
12	4					4	0.2	1.1%
14	2	6				8	1.0	4.8%
16	1	3				4	0.7	3.2%
18	1	4				5	1.1	5.3%
20	1	7	3			11	3.7	17.2%
22		7	2			9	3.8	17.7%
24		5	3			8	4.3	20.1%
26		2	1			3	1.9	8.9%
28		1	1			2	1.6	7.3%
30	1					1	0.4	2.0%
32		1				1	0.9	4.1%
34		1				1	1.0	4.7%
40	1					1	0.8	3.6%
<b>Total</b>	<b>11</b>	<b>37</b>	<b>10</b>			<b>58</b>	<b>21.3</b>	

**Scarlet Oak - Sawtimber** International 1/4 Scale

DBH	Number of Logs					# Trees	Volume	% of Total
	1-Log	2-Log	3-Log	4-Log	5-Log			
12	2					2	0.1	40.3%
14	2					2	0.2	59.7%
<b>Total</b>	<b>4</b>					<b>4</b>	<b>0.3</b>	

**Sycamore - Sawtimber** International 1/4 Scale

DBH	Number of Logs					# Trees	Volume	% of Total
	1-Log	2-Log	3-Log	4-Log	5-Log			
16		1				1	0.2	25.4%
26		1				1	0.6	74.6%
<b>Total</b>		<b>2</b>				<b>2</b>	<b>0.7</b>	

## Moore Tract

### Timber Marketing & Management, Inc.

Cruise Date: Friday, June 04, 2021  
 Owner's Name: T. Moore  
 County/State: Cumberland County, VA

#### Virginia Pine - Sawtimber International 1/4 Scale

DBH	Number of Logs					# Trees	Volume	% of Total
	1-Log	2-Log	3-Log	4-Log	5-Log			
10	5					5	0.2	4.5%
12	5	6				11	0.8	20.9%
14	3	4	3			10	1.4	34.4%
16	1	2	1			4	0.7	18.8%
18		2				2	0.5	12.4%
20	2					2	0.4	9.1%
<b>Total</b>	<b>16</b>	<b>14</b>	<b>4</b>			<b>34</b>	<b>4.0</b>	

#### White Oak - Sawtimber International 1/4 Scale

DBH	Number of Logs					# Trees	Volume	% of Total
	1-Log	2-Log	3-Log	4-Log	5-Log			
12	28					28	1.6	2.4%
14	6	32				38	5.0	7.6%
16	5	37	10			52	10.2	15.4%
18	5	25	23			53	14.6	22.3%
20	1	22	12			35	12.2	18.6%
22		9	8			17	7.7	11.7%
24		13	5			18	9.3	14.2%
26		5				5	2.8	4.2%
28		2				2	1.3	2.0%
30			1			1	1.1	1.6%
<b>Total</b>	<b>45</b>	<b>145</b>	<b>59</b>			<b>249</b>	<b>65.8</b>	

#### Sawtimber Volume by Timber Type

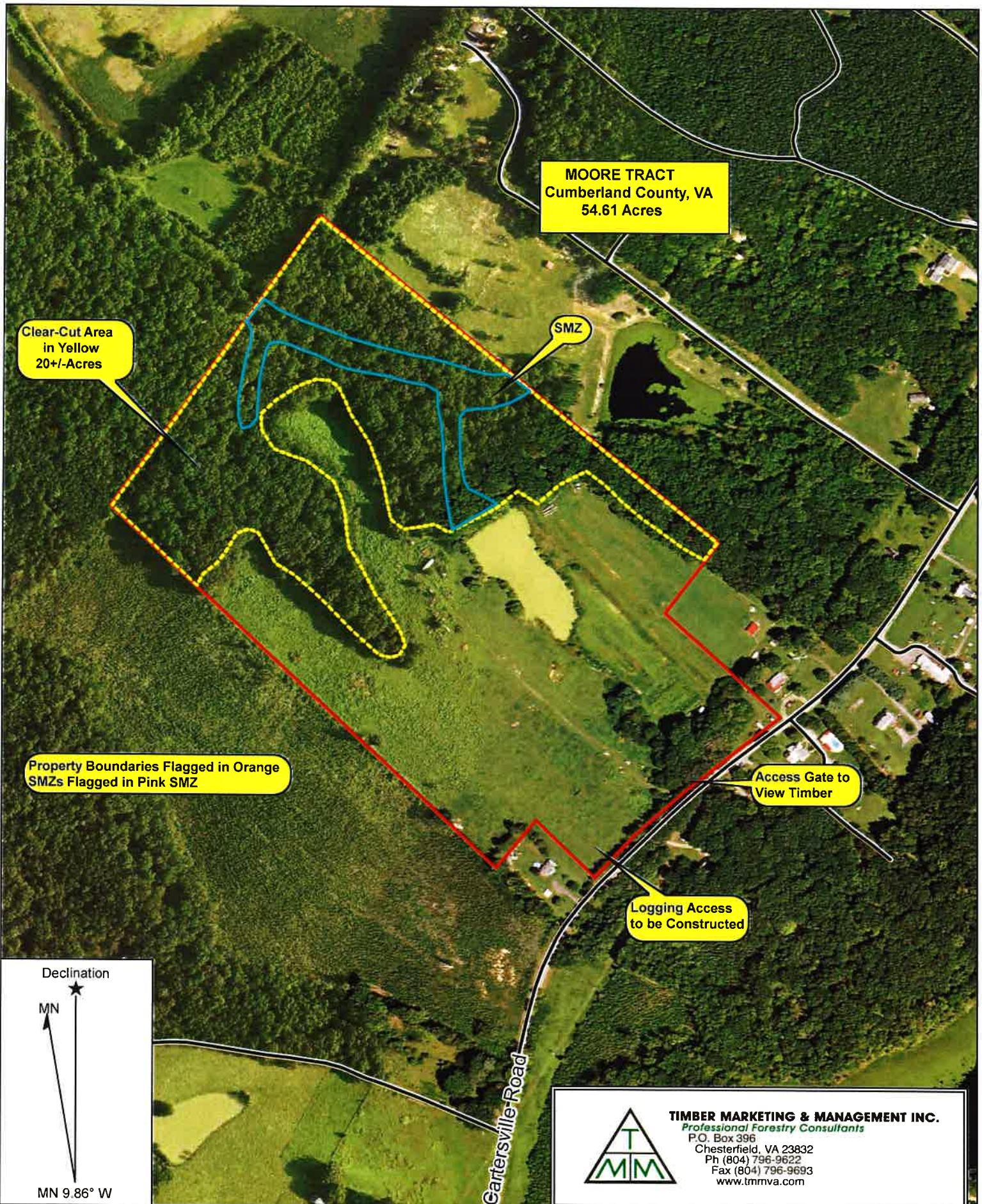
Timber Type	# Trees	Volume	Avg BF/Tree	% of Total
Hardwood	1,107	359.6	324.8	98.7%
Pine	40	4.7	118.3	1.3%
<b>Total</b>	<b>1,147</b>	<b>364.3</b>	<b>317.6</b>	

#### Sawtimber Volume by DBH

DBH	# Trees	Volume	Avg BF/Tree	% of Total
10	6	0.2	36.0	0.1%
12	140	8.1	57.8	2.2%
14	175	22.3	127.4	6.1%
16	195	39.5	202.6	10.8%
18	192	54.9	286.1	15.1%
20	144	54.1	375.9	14.9%
22	105	50.0	476.2	13.7%
24	98	58.2	594.0	16.0%
26	42	29.9	711.3	8.2%
28	24	20.1	839.1	5.5%
30	16	15.3	956.1	4.2%
32	4	4.5	1,127.3	1.2%
34	3	3.4	1,120.3	0.9%
36	1	1.6	1,571.0	0.4%
40	2	2.2	1,086.5	0.6%
<b>Total</b>	<b>1,147</b>	<b>364.3</b>	<b>317.6</b>	

#### Sawtimber Volume by Species

Species	# Trees	Volume	Avg BF/Tree	% of Total
Ash	1	0.1	56.0	0.0%
Beech	5	0.5	90.2	0.1%
Black Walnut	1	0.1	112.0	0.0%
Gum	141	27.7	196.6	7.6%
Hickory	83	14.6	175.7	4.0%
Loblolly/Shortleaf Pine	6	0.7	123.7	0.2%
Maple	33	4.6	138.4	1.3%
Miscellaneous Hardwood	9	0.8	87.8	0.2%
Northern Red Oak	78	33.2	425.4	9.1%
Poplar	443	190.1	429.1	52.2%
Red Oak	58	21.3	366.4	5.8%
Scarlet Oak	4	0.3	69.5	0.1%
Sycamore	2	0.7	374.0	0.2%
Virginia Pine	34	4.0	117.3	1.1%
White Oak	249	65.8	264.1	18.1%
<b>Total</b>	<b>1,147</b>	<b>364.3</b>	<b>317.6</b>	



**MOORE TRACT**  
 Cumberland County, VA  
 54.61 Acres

SMZ

Clear-Cut Area  
 in Yellow  
 20+/- Acres

Property Boundaries Flagged in Orange  
 SMZs Flagged in Pink SMZ

Access Gate to  
 View Timber

Logging Access  
 to be Constructed

Cartersville Road

Declination

MN

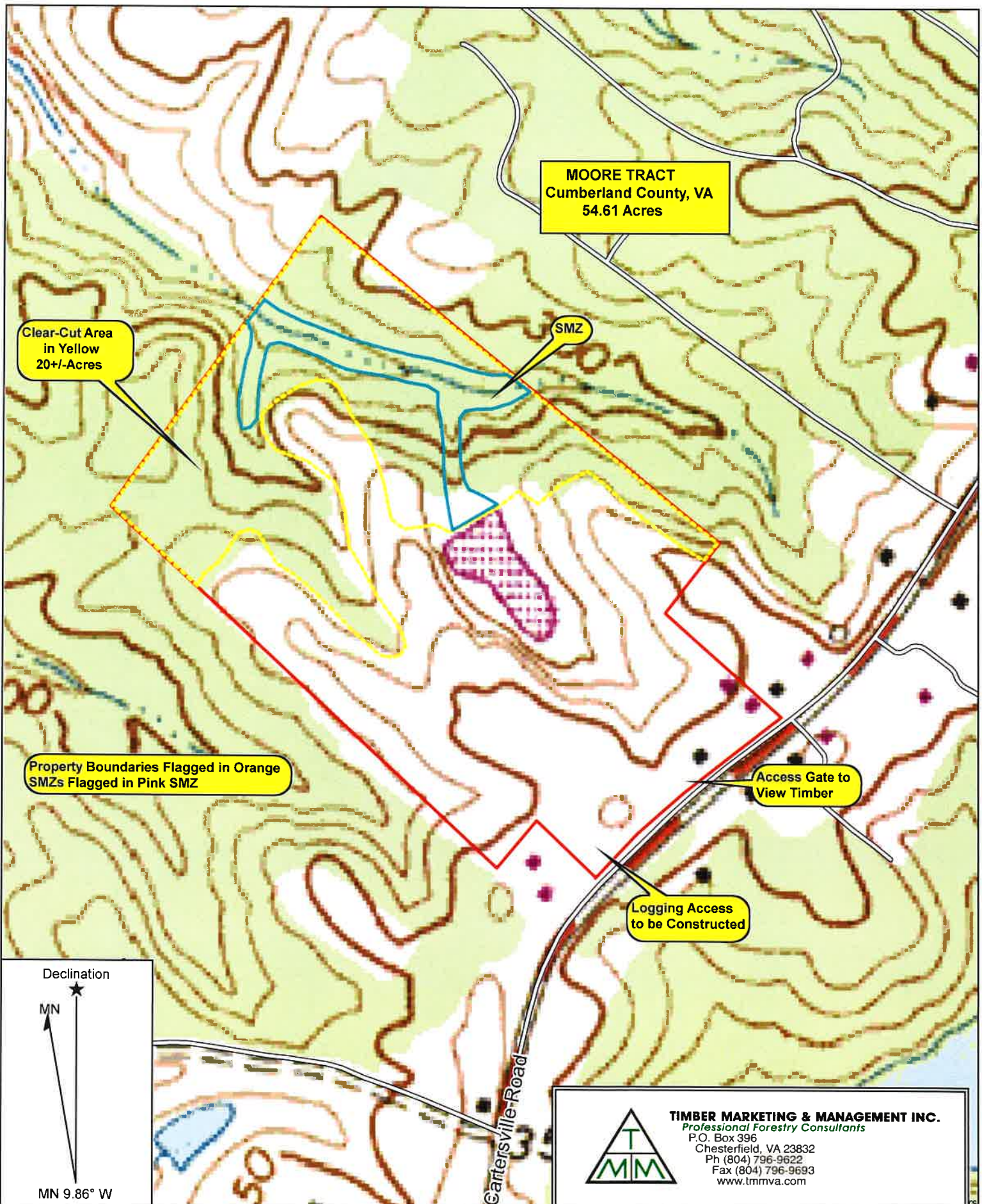
MN 9.86° W



**TIMBER MARKETING & MANAGEMENT INC.**  
 Professional Forestry Consultants  
 P.O. Box 396  
 Chesterfield, VA 23832  
 Ph (804) 796-9622  
 Fax (804) 796-9693  
 www.tmmva.com

Name: MOORE TRACT  
 Date: 06/07/21  
 Scale: 1 inch = 400 ft.

Location: 037° 39' 05.9719" N, 078° 08' 16.3146" W  
 20+/- Acre Clear-Cut



**MOORE TRACT**  
Cumberland County, VA  
54.61 Acres

Clear-Cut Area  
in Yellow  
20+/-Acres

SMZ

Property Boundaries Flagged in Orange  
SMZs Flagged in Pink

Access Gate to  
View Timber

Logging Access  
to be Constructed

Cartersville Road

Declination

MN

MN 9.86° W

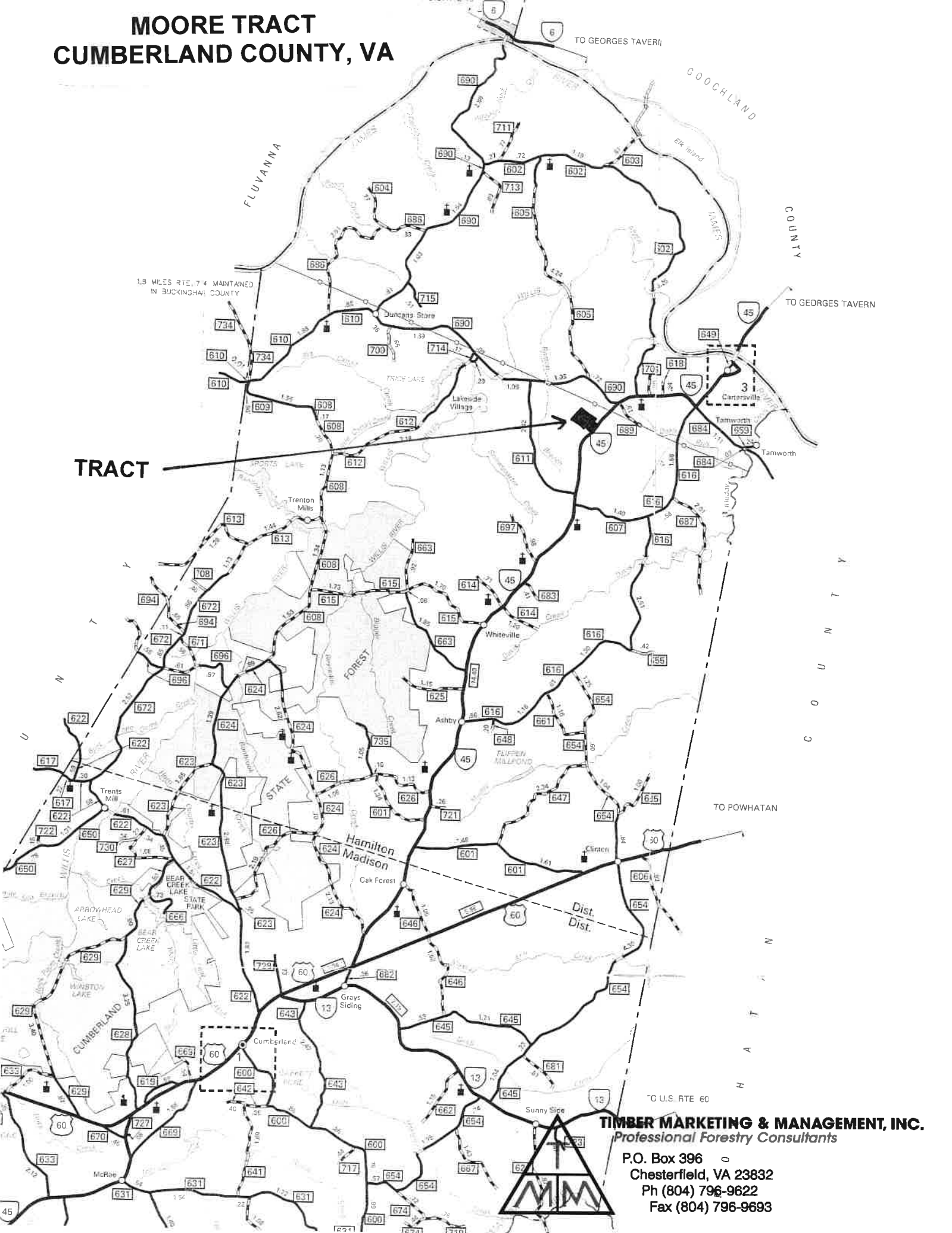


**TIMBER MARKETING & MANAGEMENT INC.**  
Professional Forestry Consultants  
P.O. Box 396  
Chesterfield, VA 23832  
Ph (804) 796-9622  
Fax (804) 796-9693  
www.tmmva.com

Name: MOORE TRACT  
Date: 06/07/21  
Scale: 1 inch = 400 ft.

Location: 037° 39' 05.9719" N, 078° 08' 16.3146" W  
20+/- Acre Clear-Cut

# MOORE TRACT CUMBERLAND COUNTY, VA



**TRACT**

**TIMBER MARKETING & MANAGEMENT, INC.**  
Professional Forestry Consultants

P.O. Box 396  
Chesterfield, VA 23832  
Ph (804) 796-9622  
Fax (804) 796-9693

