



**TIMBER MARKETING & MANAGEMENT INC.**  
*Professional Forestry Consultants*  
 P.O. Box 396  
 Chesterfield, VA 23832  
 Ph (804) 796-9622  
 Fax (804) 796-9693  
 www.tmmva.com

Sale Date	<b>February 9, 2023</b>		
Time	11:00 a.m.		
Day	Thursday		
	SC	Block 1	Block 2
Total Vol./Acre	2,548 B.F.	4,284 B. F.	5,803 B. F.
Pine Vol/Tree	133 B.F.	58 B. F.	76 B. F.
Hdwd. Vol/Tree	299 B.F.	145 B. F.	134 B. F.

## SELECT-CUT SALE

Having been employed by **John and Barbara Orf** we solicit bids on the blue marked timber only on **131 +/- acres** shown as the select-cut sale area and all merchantable timber on **10 +/- acres** shown as the clear cut area on the attached map and located in **Fluvanna County, Virginia**.

### SAWTIMBER

We made a 100% tree count of the sawtimber-size. Our estimate of their volume is:

<u>Sawtimber</u>	<u>SC</u>	<u>Block1</u>	<u>Block2</u>	<u>Total</u>
White Oak	134,800	9,100	100	144,000
Poplar	85,600	1,300	12,300	99,200
Red Oak	53,300	1,700	4,200	59,200
Chestnut Oak	34,000	9,500	0	43,500
Virginia Pine	4,700	2,400	3,600	10,700
Loblolly Pine	7,300	200	700	8,200
Beech	5,300	300	0	5,600
Gum	3,500	600	700	4,800
Hickory	3,800	500	100	4,400
Maple	1,400	100	700	2,200
Black Cherry	0	100	500	600
Cedar	<u>0</u>	<u>0</u>	<u>300</u>	<u>300</u>
	<b>333,700</b>	<b>25,800</b>	<b>23,200</b>	<b>Total: 382,700 BF Int 1/4" Scale</b>

### PULPWOOD

We made an appropriate plot cruise of the pulpwood-size trees to be harvested. Our estimate of their volume is:

<u>Pulpwood</u>	<u>Block 1</u>		<u>Block 2</u>	
	<u>9% Cruise</u>	<u>16% Cruise</u>	<u>Total</u>	<u>Total</u>
	<u>Cords</u>	<u>Cords</u>	<u>Cords</u>	<u>Tons</u>
Pine	54	16	70	182
Soft Hardwood	6	15	21	55
Hard Hardwood	<u>13</u>	<u>13</u>	<u>26</u>	<u>68</u>
<b>Total:</b>	<b>73</b>	<b>44</b>	<b>117</b>	<b>304</b>

The above volumes are not guaranteed; however, care was taken in the field to assemble the above tables. You should note how your utilization practices may vary from the above and make any necessary adjustments.

## CONDITIONS

1. A period of time of **24 months** will be allowed to cut and remove the timber.
2. Roads **must** be maintained and restored to their original condition upon completion of the logging. Any newly constructed roads and decks must be left in a graded condition and must be seeded upon completion of logging. Any newly constructed haul roads, skid roads and log decks and all logging operations must be in accordance with the guidelines set out in the ***Best Management Practices Manual*** of the Virginia Department of Forestry.
3. No tops or laps will be allowed to remain in the streams, fields, buffers or over cutting boundaries. They must be pulled back immediately.
4. Only the blue marked trees are to be cut from the harvest area. All trees must be topped and limbed before skidding through the harvest area.
5. No logging will be permitted during excessively wet weather conditions as determined by Timber Marketing & Management, Inc. If logging is halted due to weather conditions, then an extension of time equal to the time lost will be granted.
6. A **\$3,000.00** performance bond will be paid at closing and held by Timber Marketing & Management, Inc. to insure compliance with all BMP requirements, road maintenance and conditions of the Timber Purchase Contract.

Only sealed bids will be accepted and owners reserve the right to reject any or all bids. BIDS SHOULD BE SUBMITTED PRIOR TO THE TIME OF BID OPENING AND CAN BE SUBMITTED VIA: Mail to: Timber Marketing & Management, Inc. P. O. Box 396, Chesterfield, Virginia 23832 **OR** hand delivered to 9520 Ironbridge Road, Chesterfield, Virginia **OR** telephoned in to 804-796-9622 **OR** faxed to 804-796-9693 **OR** emailed to [office@tmmva.com](mailto:office@tmmva.com) Bids must be made on a lump-sum basis and must be received at this address no later than the posted bid date and time as shown on the cover. Closing shall take place within 30 days of bid acceptance.

There will be no scheduled show trip of the tract; however, you may call and set an appointment or you may inspect the property at your own leisure. An electronic copy of this sale notice, including maps and volumes, is available for download and viewing on our website at [www.tmmva.com](http://www.tmmva.com) under the Timber Sale Notices section.

Sincerely,  
Timber Marketing & Management, Inc.  
Andrew J. Lindberg, Vice President  
804-338-8436 mobile  
804-796-9622 office

## Orf Tract Select Cut

### Timber Marketing & Management, Inc.

Professional Forestry Consultants

P.O. Box 396

Chesterfield, VA 23832-0000

Phone: (804) 796-9622 • Fax: (804) 796-9693

Sawtimber Cruise: 100.0%

Cruise Date: Monday, December 5, 2022

Owner's Name: Orf

County/State: Fluvanna County, VA

Acreage: 131 +/-

Cruise Type: Tree Count

Harvest Type: Select Cut

Total BF/Acre: 2,548

Pine Vol/Tree: 133.3

Hardwood Vol/Tree: 298.5

#### Volume Legend:

- 1) Diameters shown in inches (DBH)
- 2) Logs measured in 16' increments
- 3) Sawtimber volumes are shown in thousands of board feet (MBF)
- 4) Volume scale used for each species of sawtimber is noted
- 5) Pulpwood volumes are shown in standard cords (128 cubic feet)

#### Comments:

#### Beech - Sawtimber International 1/4 Scale

Number of Logs								
DBH	1-Log	2-Log	3-Log	4-Log	5-Log	# Trees	Volume	% of Total
18	1	4				5	1.1	21.3%
20	7	8	1			16	4.2	78.7%
<b>Total</b>	<b>8</b>	<b>12</b>	<b>1</b>			<b>21</b>	<b>5.3</b>	

#### Chestnut Oak - Sawtimber International 1/4 Scale

Number of Logs								
DBH	1-Log	2-Log	3-Log	4-Log	5-Log	# Trees	Volume	% of Total
16	2	34	4			40	7.7	22.7%
18	9	42	2			53	12.4	36.5%
20	2	22	1			25	7.7	22.7%
22	1	12	1			14	5.4	15.9%
24		1				1	0.5	1.4%
26	1					1	0.3	0.9%
<b>Total</b>	<b>15</b>	<b>111</b>	<b>8</b>			<b>134</b>	<b>34.0</b>	

#### Gum - Sawtimber International 1/4 Scale

Number of Logs								
DBH	1-Log	2-Log	3-Log	4-Log	5-Log	# Trees	Volume	% of Total
16		1	3			4	1.0	27.1%
18		2				2	0.5	14.0%
20		2	1			3	1.1	29.8%
22		1				1	0.4	10.9%
24			1			1	0.6	18.2%
<b>Total</b>		<b>6</b>	<b>5</b>			<b>11</b>	<b>3.5</b>	

#### Hickory - Sawtimber International 1/4 Scale

Number of Logs								
DBH	1-Log	2-Log	3-Log	4-Log	5-Log	# Trees	Volume	% of Total
16		3				3	0.6	15.1%
18		5	1			6	1.6	41.8%
20		2				2	0.6	16.7%
22			1			1	0.5	14.0%
24		1				1	0.5	12.4%
<b>Total</b>		<b>11</b>	<b>2</b>			<b>13</b>	<b>3.8</b>	

#### Loblolly Pine - Sawtimber International 1/4 Scale

Number of Logs								
DBH	1-Log	2-Log	3-Log	4-Log	5-Log	# Trees	Volume	% of Total
10	4	1				5	0.2	2.8%
12	2	5	6			13	1.3	17.7%
14	2	4	9			15	2.4	32.9%
16		2	4			6	1.4	19.2%
18			5			5	1.7	23.0%
20		1				1	0.3	4.3%
<b>Total</b>	<b>8</b>	<b>13</b>	<b>24</b>			<b>45</b>	<b>7.3</b>	

#### Maple - Sawtimber International 1/4 Scale

Number of Logs								
DBH	1-Log	2-Log	3-Log	4-Log	5-Log	# Trees	Volume	% of Total
18	1	1				2	0.4	27.4%
20	1					1	0.2	12.7%
22		1				1	0.4	27.1%
24		1				1	0.5	32.8%
<b>Total</b>	<b>2</b>	<b>3</b>				<b>5</b>	<b>1.4</b>	

#### Poplar - Sawtimber International 1/4 Scale

Number of Logs								
DBH	1-Log	2-Log	3-Log	4-Log	5-Log	# Trees	Volume	% of Total
16		5	21			26	6.3	7.4%
18	1	32	47			80	23.9	27.9%
20		22	43			65	25.3	29.5%
22		13	18			31	14.5	17.0%
24	1	8	8			17	9.2	10.7%
26		2	4			6	4.2	4.9%
28			1			1	0.9	1.1%
34			1			1	1.4	1.6%
<b>Total</b>	<b>2</b>	<b>82</b>	<b>143</b>			<b>227</b>	<b>85.6</b>	

## Orf Tract Select Cut

### Timber Marketing & Management, Inc.

Cruise Date: Monday, December 5, 2022  
 Owner's Name: Orf  
 County/State: Fluvanna County, VA

#### Red Oak - Sawtimber International 1/4 Scale

DBH	Number of Logs					# Trees	Volume	% of Total
	1-Log	2-Log	3-Log	4-Log	5-Log			
16	2	16	2			20	3.8	7.1%
18	4	48	6			58	14.5	27.2%
20	3	45	9			57	18.5	34.8%
22		25	1			26	10.2	19.1%
24		8				8	3.8	7.0%
26		2	1			3	1.9	3.5%
28		1				1	0.7	1.2%
<b>Total</b>	<b>9</b>	<b>145</b>	<b>19</b>			<b>173</b>	<b>53.3</b>	

#### Virginia Pine - Sawtimber International 1/4 Scale

DBH	Number of Logs					# Trees	Volume	% of Total
	1-Log	2-Log	3-Log	4-Log	5-Log			
10	7					7	0.3	5.4%
12	9	4				13	0.9	18.6%
14	6	9	1			16	2.0	41.6%
16	2	6	1			9	1.6	34.5%
<b>Total</b>	<b>24</b>	<b>19</b>	<b>2</b>			<b>45</b>	<b>4.7</b>	

#### White Oak - Sawtimber International 1/4 Scale

DBH	Number of Logs					# Trees	Volume	% of Total
	1-Log	2-Log	3-Log	4-Log	5-Log			
14		1				1	0.1	0.1%
16	17	99	9			125	23.0	17.1%
18	14	177	22			213	53.3	39.5%
20	3	79	26			108	36.5	27.0%
22		23	11			34	14.7	10.9%
24		8	3			11	5.7	4.2%
26			2			2	1.5	1.1%
<b>Total</b>	<b>34</b>	<b>387</b>	<b>73</b>			<b>494</b>	<b>134.8</b>	

#### Sawtimber Volume by Timber Type

Timber Type	# Trees	Volume	Avg BF/Tree	% of Total
Hardwood	1,078	321.8	298.5	96.4%
Pine	90	12.0	133.3	3.6%
<b>Total</b>	<b>1,168</b>	<b>333.8</b>	<b>285.8</b>	

#### Sawtimber Volume by DBH

DBH	# Trees	Volume	Avg BF/Tree	% of Total
10	12	0.5	37.9	0.1%
12	26	2.2	83.2	0.6%
14	32	4.5	140.6	1.3%
16	233	45.4	194.8	13.6%
18	424	109.3	257.9	32.8%
20	278	94.3	339.3	28.3%
22	108	46.1	427.2	13.8%
24	40	20.7	516.4	6.2%
26	12	7.9	659.7	2.4%
28	2	1.6	779.0	0.5%
34	1	1.4	1,383.0	0.4%
<b>Total</b>	<b>1,168</b>	<b>333.8</b>	<b>285.8</b>	

#### Sawtimber Volume by Species

Species	# Trees	Volume	Avg BF/Tree	% of Total
Beech	21	5.3	254.4	1.6%
Chestnut Oak	134	34.0	253.5	10.2%
Gum	11	3.5	321.8	1.1%
Hickory	13	3.8	290.1	1.1%
Loblolly Pine	45	7.3	162.2	2.2%
Maple	5	1.4	285.8	0.4%
Poplar	227	85.6	377.3	25.7%
Red Oak	173	53.3	308.0	16.0%
Virginia Pine	45	4.7	104.4	1.4%
White Oak	494	134.8	273.0	40.4%
<b>Total</b>	<b>1,168</b>	<b>333.8</b>	<b>285.8</b>	

## Orf Tract Block 1 Clear Cut North

### Timber Marketing & Management, Inc.

Professional Forestry Consultants

P.O. Box 396

Chesterfield, VA 23832-0000

Phone: (804) 796-9622 • Fax: (804) 796-9693

Pulpwood Cruise: 9.0%  
Sawtimber Cruise: 100.0%

Cruise Date: Tuesday, December 13, 2022  
Owner's Name: Orf  
County/State: Fluvanna County, VA  
Acreage: 6+/-  
Cruise Type: Tree Count  
Harvest Type: Clear Cut  
Total BF/Acre: 4,284  
Pine Vol/Tree: 58.2  
Hardwood Vol/Tree: 145.2

#### Volume Legend:

- 1) Diameters shown in inches (DBH)
- 2) Logs measured in 16' increments
- 3) Sawtimber volumes are shown in thousands of board feet (MBF)
- 4) Volume scale used for each species of sawtimber is noted
- 5) Pulpwood volumes are shown in standard cords (128 cubic feet)

#### Comments:

#### Pulpwood Standard Cord

DBH	Wood Classification							
	Pine		Soft Hardwood		Hard Hardwood		Cedar	
# Trees	Volume	# Trees	Volume	# Trees	Volume	# Trees	Volume	
6	200	9	11	0	67	3		
8	167	17	11	1	44	4		
10	156	26	33	4	22	3		
12	11	3			22	4		
<b>Total</b>	<b>533</b>	<b>54</b>	<b>56</b>	<b>6</b>	<b>156</b>	<b>13</b>		

#### Beech - Sawtimber International 1/4 Scale

DBH	Number of Logs					# Trees	Volume	% of Total
	1-Log	2-Log	3-Log	4-Log	5-Log			
16	1					1	0.1	43.8%
18	1					1	0.1	56.3%
<b>Total</b>	<b>2</b>					<b>2</b>	<b>0.3</b>	

#### Black Cherry - Sawtimber International 1/4 Scale

DBH	Number of Logs					# Trees	Volume	% of Total
	1-Log	2-Log	3-Log	4-Log	5-Log			
16	1					1	0.1	100.0%
<b>Total</b>	<b>1</b>					<b>1</b>	<b>0.1</b>	

#### Chestnut Oak - Sawtimber International 1/4 Scale

DBH	Number of Logs					# Trees	Volume	% of Total
	1-Log	2-Log	3-Log	4-Log	5-Log			
12	13					13	0.7	7.6%
14	10	2				12	1.1	11.7%
16	9	5				14	2.0	20.6%
18	13	2				15	2.4	24.9%
20	5	4				9	2.2	22.7%
22		2				2	0.8	8.1%
30	1					1	0.4	4.5%
<b>Total</b>	<b>51</b>	<b>15</b>				<b>66</b>	<b>9.5</b>	

#### Gum - Sawtimber International 1/4 Scale

DBH	Number of Logs					# Trees	Volume	% of Total
	1-Log	2-Log	3-Log	4-Log	5-Log			
12	2					2	0.1	18.4%
14	2	1				3	0.3	50.4%
16		1				1	0.2	31.2%
<b>Total</b>	<b>4</b>	<b>2</b>				<b>6</b>	<b>0.6</b>	

#### Hickory - Sawtimber International 1/4 Scale

DBH	Number of Logs					# Trees	Volume	% of Total
	1-Log	2-Log	3-Log	4-Log	5-Log			
12	2					2	0.1	24.8%
14	1					1	0.1	18.4%
16	1					1	0.1	24.8%
18	1					1	0.1	31.9%
<b>Total</b>	<b>5</b>					<b>5</b>	<b>0.5</b>	

#### Loblolly Pine - Sawtimber International 1/4 Scale

DBH	Number of Logs					# Trees	Volume	% of Total
	1-Log	2-Log	3-Log	4-Log	5-Log			
10	2					2	0.1	32.7%
12	1	1				2	0.1	67.3%
<b>Total</b>	<b>3</b>	<b>1</b>				<b>4</b>	<b>0.2</b>	

#### Maple - Sawtimber International 1/4 Scale

DBH	Number of Logs					# Trees	Volume	% of Total
	1-Log	2-Log	3-Log	4-Log	5-Log			
14	1					1	0.1	100.0%
<b>Total</b>	<b>1</b>					<b>1</b>	<b>0.1</b>	

#### Poplar - Sawtimber International 1/4 Scale

DBH	Number of Logs					# Trees	Volume	% of Total
	1-Log	2-Log	3-Log	4-Log	5-Log			
12	5					5	0.3	21.4%
14	2	3				5	0.6	45.1%
16		1				1	0.2	14.5%
18		1				1	0.2	19.0%
<b>Total</b>	<b>7</b>	<b>5</b>				<b>12</b>	<b>1.3</b>	

## Orf Tract Block 1 Clear Cut North

### Timber Marketing & Management, Inc.

Cruise Date: Tuesday, December 13, 2022  
 Owner's Name: Orf  
 County/State: Fluvanna County, VA

#### Red Oak - Sawtimber International 1/4 Scale

DBH	Number of Logs					# Trees	Volume	% of Total
	1-Log	2-Log	3-Log	4-Log	5-Log			
12	3					3	0.2	9.9%
14	1					1	0.1	4.9%
16	1					1	0.1	6.6%
18		1				1	0.2	14.6%
20	1	1				2	0.5	29.2%
22	1					1	0.2	13.0%
28	1					1	0.4	21.7%
<b>Total</b>	<b>8</b>	<b>2</b>				<b>10</b>	<b>1.7</b>	

#### Virginia Pine - Sawtimber International 1/4 Scale

DBH	Number of Logs					# Trees	Volume	% of Total
	1-Log	2-Log	3-Log	4-Log	5-Log			
10	27					27	1.0	40.6%
12	2	3				5	0.4	16.2%
14	4	5				9	1.0	43.3%
<b>Total</b>	<b>33</b>	<b>8</b>				<b>41</b>	<b>2.4</b>	

#### White Oak - Sawtimber International 1/4 Scale

DBH	Number of Logs					# Trees	Volume	% of Total
	1-Log	2-Log	3-Log	4-Log	5-Log			
12	4					4	0.2	2.5%
14	9	2				11	1.0	11.4%
16	10	11				21	3.2	35.5%
18	5	8				13	2.7	29.9%
20	2	4				6	1.6	17.9%
24	1					1	0.3	2.9%
<b>Total</b>	<b>31</b>	<b>25</b>				<b>56</b>	<b>9.1</b>	

#### Sawtimber Volume by Timber Type

Timber Type	# Trees	Volume	Avg BF/Tree	% of Total
Hardwood	159	23.1	145.2	89.8%
Pine	45	2.6	58.2	10.2%
<b>Total</b>	<b>204</b>	<b>25.7</b>	<b>126.0</b>	

#### Sawtimber Volume by DBH

DBH	# Trees	Volume	Avg BF/Tree	% of Total
10	29	1.0	36.0	4.1%
12	36	2.2	60.0	8.4%
14	43	4.3	100.5	16.8%
16	41	6.0	146.2	23.3%
18	32	5.9	183.0	22.8%
20	17	4.3	251.4	16.6%
22	3	1.0	331.7	3.9%
24	1	0.3	266.0	1.0%
28	1	0.4	367.0	1.4%
30	1	0.4	424.0	1.6%
<b>Total</b>	<b>204</b>	<b>25.7</b>	<b>126.0</b>	

#### Sawtimber Volume by Species

Species	# Trees	Volume	Avg BF/Tree	% of Total
Beech	2	0.3	128.0	1.0%
Black Cherry	1	0.1	112.0	0.4%
Chestnut Oak	66	9.5	144.3	37.1%
Gum	6	0.6	101.5	2.4%
Hickory	5	0.5	90.2	1.8%
Loblolly Pine	4	0.2	55.0	0.9%
Maple	1	0.1	83.0	0.3%
Poplar	12	1.3	108.9	5.1%
Red Oak	10	1.7	169.4	6.6%
Virginia Pine	41	2.4	58.5	9.3%
White Oak	56	9.1	161.6	35.2%
<b>Total</b>	<b>204</b>	<b>25.7</b>	<b>126.0</b>	

## Orf Tract Block 2 Clear Cut South

### Timber Marketing & Management, Inc.

Professional Forestry Consultants

P.O. Box 396

Chesterfield, VA 23832-0000

Phone: (804) 796-9622 • Fax: (804) 796-9693

Pulpwood Cruise: 16.0%

Sawtimber Cruise: 100.0%

Cruise Date: Monday, December 12, 2022

Owner's Name: Orf

County/State: Fluvanna County, VA

Acreage: 4+/-

Cruise Type: Tree Count

Harvest Type: Clear Cut

Total BF/Acre: 5,803

Pine Vol/Tree: 76.4

Hardwood Vol/Tree: 134.4

#### Volume Legend:

- 1) Diameters shown in inches (DBH)
- 2) Logs measured in 16' increments
- 3) Sawtimber volumes are shown in thousands of board feet (MBF)
- 4) Volume scale used for each species of sawtimber is noted
- 5) Pulpwood volumes are shown in standard cords (128 cubic feet)

#### Comments:

#### Pulpwood Standard Cord

DBH	Wood Classification							
	Pine		Soft Hardwood		Hard Hardwood		Cedar	
	# Trees	Volume	# Trees	Volume	# Trees	Volume	# Trees	Volume
6	31	1	31	1	81	3		
8	56	6	44	3	94	7		
10	44	7	63	8	19	2		
12	6	2	13	2				
<b>Total</b>	<b>138</b>	<b>16</b>	<b>150</b>	<b>15</b>	<b>194</b>	<b>13</b>		

#### Black Cherry - Sawtimber International 1/4 Scale

DBH	Number of Logs							
	1-Log	2-Log	3-Log	4-Log	5-Log	# Trees	Volume	% of Total
12	2					2	0.1	21.7%
14	1	1				2	0.2	43.3%
20	1					1	0.2	35.0%
<b>Total</b>	<b>4</b>	<b>1</b>				<b>5</b>	<b>0.5</b>	

#### Cedar - Sawtimber International 1/4 Scale

DBH	Number of Logs							
	1-Log	2-Log	3-Log	4-Log	5-Log	# Trees	Volume	% of Total
14		1				1	0.1	42.6%
16		1				1	0.2	57.4%
<b>Total</b>		<b>2</b>				<b>2</b>	<b>0.3</b>	

#### Gum - Sawtimber International 1/4 Scale

DBH	Number of Logs							
	1-Log	2-Log	3-Log	4-Log	5-Log	# Trees	Volume	% of Total
14		2				2	0.3	42.6%
16		2				2	0.4	57.4%
<b>Total</b>		<b>4</b>				<b>4</b>	<b>0.7</b>	

#### Hickory - Sawtimber International 1/4 Scale

DBH	Number of Logs							
	1-Log	2-Log	3-Log	4-Log	5-Log	# Trees	Volume	% of Total
16	1					1	0.1	100.0%
<b>Total</b>	<b>1</b>					<b>1</b>	<b>0.1</b>	

#### Loblolly Pine - Sawtimber International 1/4 Scale

DBH	Number of Logs							
	1-Log	2-Log	3-Log	4-Log	5-Log	# Trees	Volume	% of Total
12	1	1				2	0.1	20.4%
16		1				1	0.2	26.2%
22		1				1	0.4	53.4%
<b>Total</b>	<b>1</b>	<b>3</b>				<b>4</b>	<b>0.7</b>	

#### Maple - Sawtimber International 1/4 Scale

DBH	Number of Logs							
	1-Log	2-Log	3-Log	4-Log	5-Log	# Trees	Volume	% of Total
14	1					1	0.1	12.4%
18	1					1	0.1	21.5%
22	2					2	0.4	66.1%
<b>Total</b>	<b>4</b>					<b>4</b>	<b>0.7</b>	

#### Poplar - Sawtimber International 1/4 Scale

DBH	Number of Logs							
	1-Log	2-Log	3-Log	4-Log	5-Log	# Trees	Volume	% of Total
12	27					27	1.5	12.3%
14	6	21	1			28	3.6	29.6%
16	1	14	3			18	3.5	28.8%
18	1	3	3			7	1.9	15.4%
20		3				3	0.9	7.7%
22		2				2	0.8	6.3%
<b>Total</b>	<b>35</b>	<b>43</b>	<b>7</b>			<b>85</b>	<b>12.3</b>	

#### Red Oak - Sawtimber International 1/4 Scale

DBH	Number of Logs							
	1-Log	2-Log	3-Log	4-Log	5-Log	# Trees	Volume	% of Total
12	20					20	1.1	26.7%
14	8					8	0.7	15.8%
16	3	3				6	0.9	21.6%
20	2					2	0.4	8.6%
22		1				1	0.4	9.2%
30		1				1	0.8	18.1%
<b>Total</b>	<b>33</b>	<b>5</b>				<b>38</b>	<b>4.2</b>	

## Orf Tract Block 2 Clear Cut South

### Timber Marketing & Management, Inc.

Cruise Date: Monday, December 12, 2022  
 Owner's Name: Orf  
 County/State: Fluvanna County, VA

#### Virginia Pine - Sawtimber International 1/4 Scale

DBH	Number of Logs					# Trees	Volume	% of Total
	1-Log	2-Log	3-Log	4-Log	5-Log			
10	21					21	0.8	21.0%
12	19	4				23	1.4	39.7%
14	5	4				9	1.0	27.2%
16		1				1	0.2	5.3%
18		1				1	0.2	6.9%
<b>Total</b>	<b>45</b>	<b>10</b>				<b>55</b>	<b>3.6</b>	

#### White Oak - Sawtimber International 1/4 Scale

DBH	Number of Logs					# Trees	Volume	% of Total
	1-Log	2-Log	3-Log	4-Log	5-Log			
14	1					1	0.1	100.0%
<b>Total</b>	<b>1</b>					<b>1</b>	<b>0.1</b>	

#### Sawtimber Volume by Timber Type

Timber Type	# Trees	Volume	Avg BF/Tree	% of Total
Hardwood	138	18.5	134.4	79.9%
Pine	61	4.7	76.4	20.1%
<b>Total</b>	<b>199</b>	<b>23.2</b>	<b>116.6</b>	

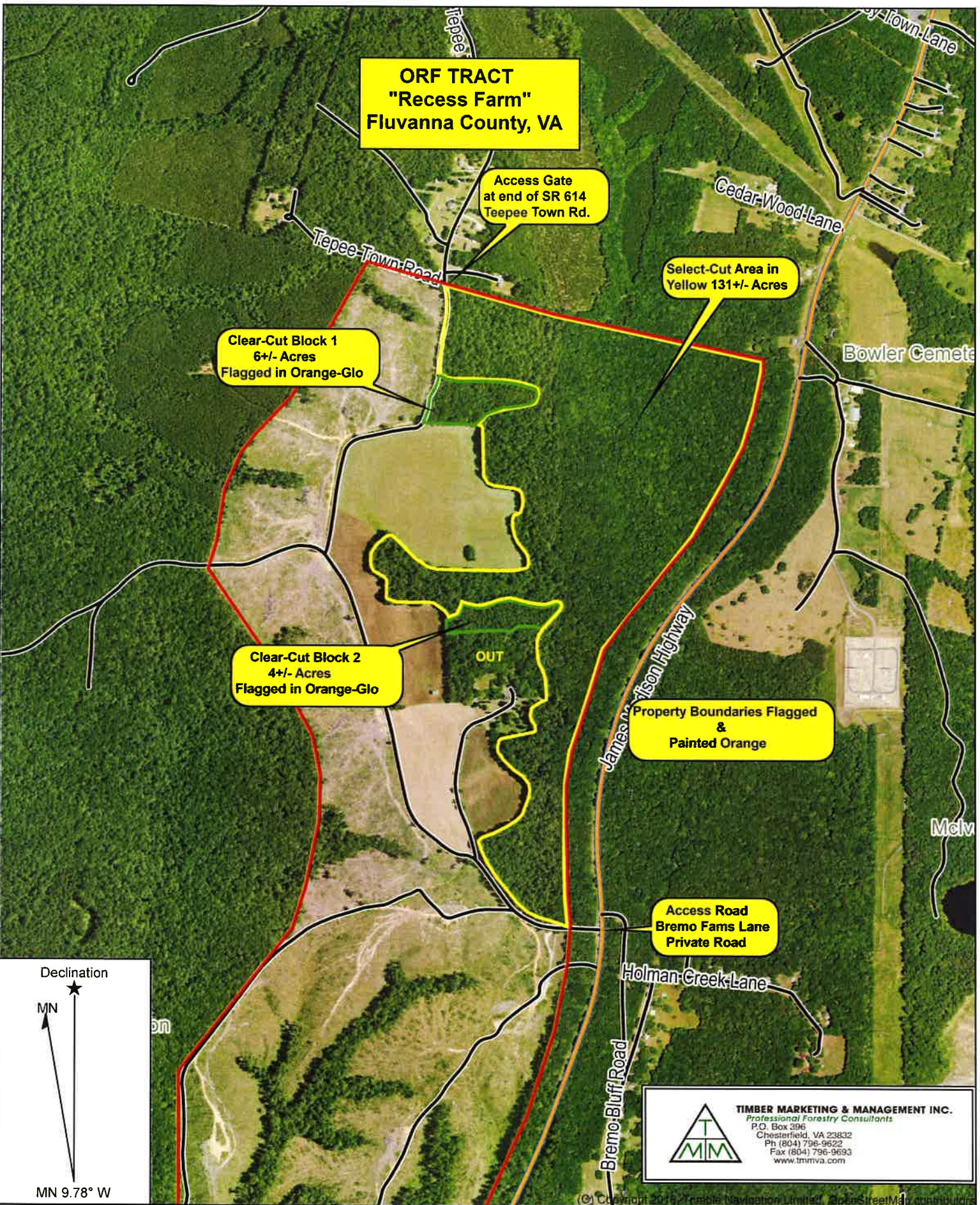
#### Sawtimber Volume by DBH

DBH	# Trees	Volume	Avg BF/Tree	% of Total
10	21	0.8	36.0	3.3%
12	74	4.3	58.4	18.6%
14	52	6.1	117.3	26.3%
16	30	5.5	183.6	23.7%
18	9	2.3	254.2	9.9%
20	6	1.5	247.5	6.4%
22	6	2.0	331.7	8.6%
30	1	0.8	758.0	3.3%
<b>Total</b>	<b>199</b>	<b>23.2</b>	<b>116.6</b>	

#### Sawtimber Volume by Species

Species	# Trees	Volume	Avg BF/Tree	% of Total
Black Cherry	5	0.5	103.4	2.2%
Cedar	2	0.3	165.5	1.4%
Gum	4	0.7	165.5	2.9%
Hickory	1	0.1	112.0	0.5%
Loblolly Pine	4	0.7	181.3	3.1%
Maple	4	0.7	167.3	2.9%
Poplar	85	12.3	144.8	53.0%
Red Oak	38	4.2	110.4	18.1%
Virginia Pine	55	3.6	65.5	15.5%
White Oak	1	0.1	83.0	0.4%
<b>Total</b>	<b>199</b>	<b>23.2</b>	<b>116.6</b>	





**ORF TRACT  
"Recess Farm"  
Fluvanna County, VA**

Access Gate  
at end of SR 614  
Teepee Town Rd.

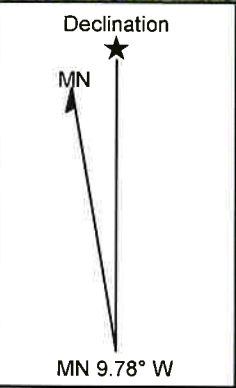
Select-Cut Area in  
Yellow 131+/- Acres

Clear-Cut Block 1  
6+/- Acres  
Flagged in Orange-Glo

Clear-Cut Block 2  
4+/- Acres  
Flagged in Orange-Glo

Property Boundaries Flagged  
&  
Painted Orange

Access Road  
Bremer Farms Lane  
Private Road



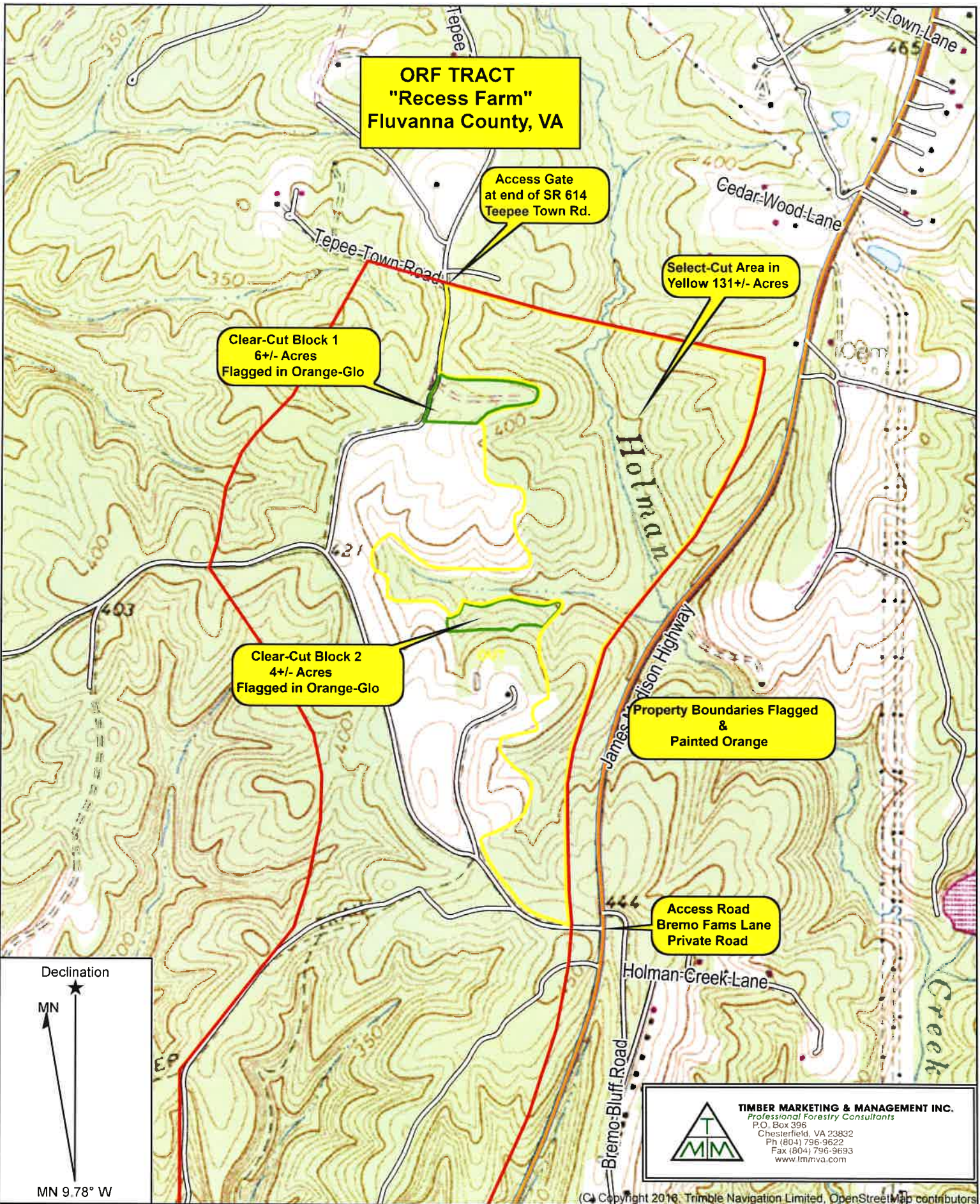
**TIMBER MARKETING & MANAGEMENT INC.**  
Professional Forestry Consultants  
P.O. Box 396  
Chesterfield, VA 23832  
Ph (804) 796-9522  
Fax (804) 796-9693  
www.tmmva.com

Name: ORF TRACT - Recess Farm  
Date: 01/10/23  
Scale: 1 inch = 1,000 ft.

Location: 037° 44' 00.9923" N, 078° 18' 03.1942" W

© Copyright 2016, Trimble Navigation Limited, OpenStreetMap contributors





**ORF TRACT  
"Recess Farm"  
Fluvanna County, VA**

Access Gate  
at end of SR 614  
Teepee Town Rd.

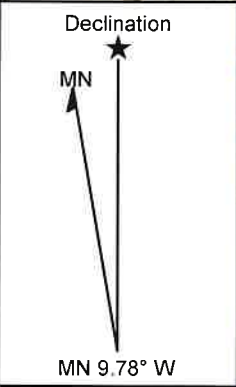
Select-Cut Area in  
Yellow 131+/- Acres

Clear-Cut Block 1  
6+/- Acres  
Flagged in Orange-Glo

Clear-Cut Block 2  
4+/- Acres  
Flagged in Orange-Glo

Property Boundaries Flagged  
&  
Painted Orange

Access Road  
Breomo Fams Lane  
Private Road



**TIMBER MARKETING & MANAGEMENT INC.**  
Professional Forestry Consultants  
P.O. Box 396  
Chesterfield, VA 23832  
Ph (804) 796-9622  
Fax (804) 796-9693  
www.tmmva.com

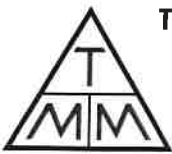
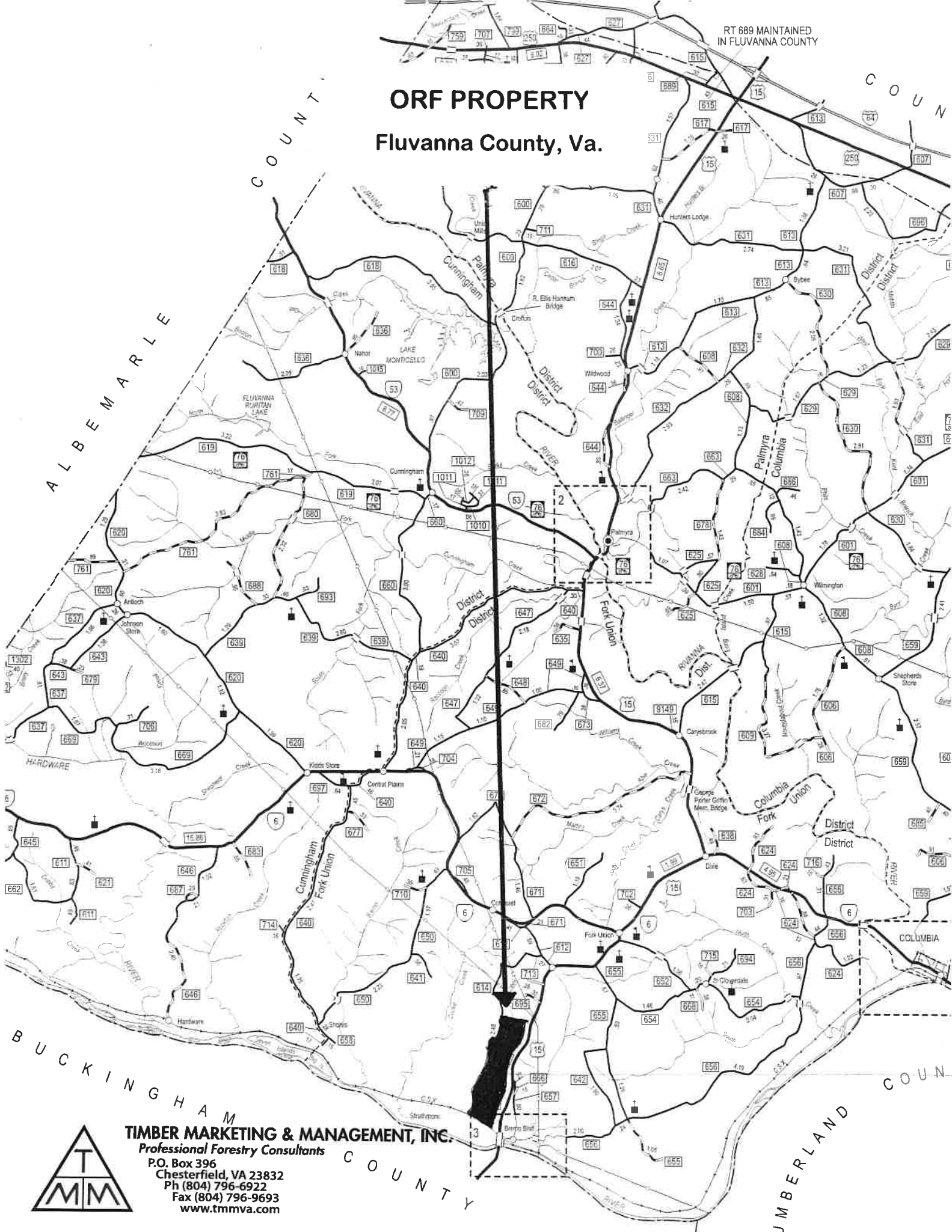
(C) Copyright 2016, Trimble Navigation Limited, OpenStreetMap contributors



RT 689 MAINTAINED  
IN FLUVANNA COUNTY

# ORF PROPERTY

## Fluvanna County, Va.



**TIMBER MARKETING & MANAGEMENT, INC.**  
*Professional Forestry Consultants*  
P.O. Box 396  
Chesterfield, VA 23832  
Ph (804) 796-6922  
Fax (804) 796-9693  
[www.tmmva.com](http://www.tmmva.com)