

**TIMBER MARKETING & MANAGEMENT INC.**

*Professional Forestry Consultants*

P.O. Box 396  
 Chesterfield, VA 23832  
 Ph (804) 796-9622  
 Fax (804) 796-9693  
 www.tmmva.com

Sale Date:	<b>January 30, 2020</b>
Time:	<b>11:00 a.m.</b>
Day:	<b>Thursday</b>
Total Vol./Acre:	<b>7,683 B. F.</b>
Pine Vol/Tree:	<b>97 B. F.</b>
Hdwd. Vol/Tree:	<b>184 B. F.</b>

**CLEAR- CUT SALE  
 EXCELLENT ACCESS**

Having been employed by **John & Barbara Orf** we solicit bids on all merchantable timber on **114 +/- acres** in **Fluvanna County, Virginia** and as shown on the attached map.

We made a 5% plot cruise of the pulpwood trees to be harvested. Our estimate of their volume is:

<u>Pulpwood</u>	<u>Cords</u>	<u>Tons</u>
Pine	47	122
Soft Hardwood	270	702
Hard Hardwood	<u>405</u>	<u>1,053</u>
<b>Total:</b>	<b>722</b>	<b>1,877</b>

We have made a 100% count of the sawtimber-size trees to be harvested. Our estimate of their volume is:

<u>Sawtimber</u>			
White Oak	240,800	Beech	16,800
Poplar	202,200	Gum	5,900
Red Oak	124,200	Virginia Pine	4,400
Chestnut Oak	122,600	Shortleaf Pine	3,700
Scarlet Oak	90,000	Black Cherry	300
Maple	36,400	Cedar	<u>200</u>
Hickory	28,300	<b>Total:</b>	<b>875,800 BF Int 1/4" Scale</b>

The above volumes are not guaranteed; however, care was taken in the field to assemble the above tables. You should note how your utilization practices may vary from the above and make any necessary adjustments.

**Conditions**

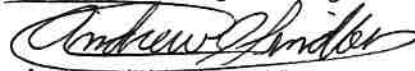
1. A period of time of 24 months will be allowed to cut and remove the timber.
2. Roads **must** be maintained and restored to their original condition upon completion of the logging. Any newly constructed roads and decks must be left in a graded condition and must be seeded upon completion of logging. Any newly constructed haul roads, skid roads and log decks and all logging operations must be in accordance with the guidelines set out in the **Best Management Practices Manual** of the Virginia Department of Forestry.
3. No tops or laps will be allowed to remain in the streams, fields, buffers or over cutting boundaries. They must be pulled back immediately.
4. Only the blue marked trees are to be cut from Streamside Management Zones.
5. No logging will be permitted during excessively wet weather conditions as determined by Timber Marketing & Management, Inc. If logging is halted due to weather conditions, then an extension of time equal to the time lost will be granted.
6. A \$3,000.00 performance bond will be paid at closing and held by Timber Marketing & Management, Inc. to insure compliance with all BMP requirements, road maintenance and conditions of the Timber Purchase Contract.

Only sealed bids will be accepted and owners reserve the right to reject any or all bids. BIDS SHOULD BE SUBMITTED PRIOR TO THE TIME OF BID OPENING AND CAN BE SUBMITTED VIA: Mail to: Timber Marketing & Management, Inc. P. O. Box 396, Chesterfield, Virginia 23832 **OR** hand delivered to 9520 Ironbridge Road, Chesterfield, Virginia **OR** telephoned in to 804-796-9622 **OR** faxed to 804-796-9693 **OR** emailed to tmm4u@aol.com Bids must be made on a lump-sum basis and must be received at this address no later than the posted bid date and time as shown on the cover. Closing shall take place within 30 days of bid acceptance.

There will be no scheduled show trip of the tract; however, you may call and set an appointment or you may inspect the property at your own leisure.

An electronic copy of this sale notice, including maps and volumes, is available for download and viewing on our website at [www.tmmva.com](http://www.tmmva.com) under the Timber Sale Notices section.

Sincerely,  
Timber Marketing & Management, Inc.



Andrew J. Lindberg, Vice President  
804-338-8436 mobile  
804-796-9622 office

## Orf Tract Clear Cut

### Timber Marketing & Management, Inc.

Professional Forestry Consultants

P.O. Box 396

Chesterfield, VA 23832-0000

Phone: (804) 796-9622 • Fax: (804) 796-9693

Pulpwood Cruise: 5.0%  
Sawtimber Cruise: 100.0%

Cruise Date: Wednesday, October 23, 2019  
Owner's Name: Orf  
County/State: Fluvanna County, VA  
Acreage: 114+/-  
Cruise Type: Tree Count  
Harvest Type: Clear Cut  
Total BF/Acre: 7,683  
Pine Vol/Tree: 97.2  
Hardwood Vol/Tree: 184.1

#### Volume Legend:

- 1) Diameters shown in inches (DBH)
- 2) Logs measured in 16' increments
- 3) Sawtimber volumes are shown in thousands of board feet (MBF)
- 4) Volume scale used for each species of sawtimber is noted
- 5) Pulpwood volumes are shown in standard cords (128 cubic feet)

#### Comments:

#### Pulpwood Standard Cord

DBH	Wood Classification							
	Pine		Soft Hardwood		Hard Hardwood		Cedar	
# Trees	Volume	# Trees	Volume	# Trees	Volume	# Trees	Volume	
6	240	11	580	23	1,400	55		
8	180	18	1,000	79	1,260	100		
10	80	13	720	96	1,180	157		
12	20	5	260	51	420	83		
14			80	21	40	11		
<b>Total</b>	<b>520</b>	<b>47</b>	<b>2,640</b>	<b>270</b>	<b>4,300</b>	<b>405</b>		

#### Beech - Sawtimber International 1/4 Scale

DBH	Number of Logs							
	1-Log	2-Log	3-Log	4-Log	5-Log	# Trees	Volume	% of Total
12	43					43	2.4	14.4%
14	40	3				43	3.7	22.3%
16	20	4				24	3.0	17.9%
18	15	6				21	3.6	21.8%
20	9	3				12	2.6	15.3%
22	2	1				3	0.8	4.9%
26		1				1	0.6	3.3%
<b>Total</b>	<b>129</b>	<b>18</b>				<b>147</b>	<b>16.8</b>	

#### Black Cherry - Sawtimber International 1/4 Scale

DBH	Number of Logs							
	1-Log	2-Log	3-Log	4-Log	5-Log	# Trees	Volume	% of Total
18	1					1	0.1	44.3%
20	1					1	0.2	55.7%
<b>Total</b>	<b>2</b>					<b>2</b>	<b>0.3</b>	

#### Cedar - Sawtimber International 1/4 Scale

DBH	Number of Logs							
	1-Log	2-Log	3-Log	4-Log	5-Log	# Trees	Volume	% of Total
16		1				1	0.2	100.0%
<b>Total</b>		<b>1</b>				<b>1</b>	<b>0.2</b>	

#### Chestnut Oak - Sawtimber International 1/4 Scale

DBH	Number of Logs							
	1-Log	2-Log	3-Log	4-Log	5-Log	# Trees	Volume	% of Total
12	149					149	8.3	6.8%
14	112	100				212	23.4	19.1%
16	55	115	19			189	32.9	26.8%
18	25	70	19			114	27.3	22.3%
20	8	40	18			66	21.7	17.7%
22	5	10	4			19	7.1	5.8%
24		1	1			2	1.1	0.9%
26			1			1	0.8	0.6%
<b>Total</b>	<b>354</b>	<b>336</b>	<b>62</b>			<b>752</b>	<b>122.6</b>	

#### Gum - Sawtimber International 1/4 Scale

DBH	Number of Logs							
	1-Log	2-Log	3-Log	4-Log	5-Log	# Trees	Volume	% of Total
12	9					9	0.5	8.5%
14	8	5				13	1.4	23.1%
16	4	5	2			11	1.9	32.3%
18		3	1			4	1.1	18.2%
20		2	1			3	1.1	17.8%
<b>Total</b>	<b>21</b>	<b>15</b>	<b>4</b>			<b>40</b>	<b>5.9</b>	

#### Hickory - Sawtimber International 1/4 Scale

DBH	Number of Logs							
	1-Log	2-Log	3-Log	4-Log	5-Log	# Trees	Volume	% of Total
12	68					68	3.8	13.5%
14	25	29				54	6.2	21.8%
16	6	27	6			39	7.3	25.9%
18	7	18	4			29	6.8	24.1%
20	1	2	3			6	2.1	7.4%
22		4	1			5	2.1	7.3%
<b>Total</b>	<b>107</b>	<b>80</b>	<b>14</b>			<b>201</b>	<b>28.3</b>	

## Orf Tract Clear Cut

### Timber Marketing & Management, Inc.

Cruise Date: Wednesday, October 23, 2019  
 Owner's Name: Orf  
 County/State: Fluvanna County, VA

#### Maple - Sawtimber International 1/4 Scale

DBH	Number of Logs					# Trees	Volume	% of Total
	1-Log	2-Log	3-Log	4-Log	5-Log			
12	113					113	6.3	17.4%
14	60	25				85	8.5	23.4%
16	33	23	5			61	9.3	25.7%
18	14	15	3			32	6.7	18.5%
20	4	7	1			12	3.3	9.2%
22	3		1			4	1.2	3.3%
24		2				2	0.9	2.6%
<b>Total</b>	<b>227</b>	<b>72</b>	<b>10</b>			<b>309</b>	<b>36.4</b>	

#### Poplar - Sawtimber International 1/4 Scale

DBH	Number of Logs					# Trees	Volume	% of Total
	1-Log	2-Log	3-Log	4-Log	5-Log			
12	167					167	9.4	4.6%
14	54	153	6			213	27.2	13.4%
16	15	101	112	2		230	50.2	24.8%
18	5	57	104	13		179	55.0	27.2%
20	2	17	50	10		79	32.2	15.9%
22		14	18	9		41	20.7	10.2%
24		6	5			11	6.0	3.0%
26			1			1	0.8	0.4%
28			1			1	0.9	0.4%
<b>Total</b>	<b>243</b>	<b>348</b>	<b>297</b>	<b>34</b>		<b>922</b>	<b>202.2</b>	

#### Red Oak - Sawtimber International 1/4 Scale

DBH	Number of Logs					# Trees	Volume	% of Total
	1-Log	2-Log	3-Log	4-Log	5-Log			
12	111					111	6.2	5.0%
14	56	74				130	15.1	12.1%
16	29	78	29			136	25.5	20.5%
18	9	65	35			109	29.2	23.5%
20	13	39	23	2		77	25.4	20.5%
22	3	9	16			28	12.6	10.1%
24	3	5	5			13	6.4	5.1%
26	1	2	2			5	3.0	2.4%
28			1			1	0.9	0.7%
<b>Total</b>	<b>225</b>	<b>272</b>	<b>111</b>	<b>2</b>		<b>610</b>	<b>124.2</b>	

#### Scarlet Oak - Sawtimber International 1/4 Scale

DBH	Number of Logs					# Trees	Volume	% of Total
	1-Log	2-Log	3-Log	4-Log	5-Log			
12	41					41	2.3	2.6%
14	31	26				57	6.2	6.9%
16	12	31	16			59	11.3	12.6%
18	5	38	35			78	21.9	24.3%
20	3	23	33	1		60	22.4	24.9%
22		16	19	1		36	16.9	18.7%
24		3	8			11	6.6	7.3%
26		3	1			4	2.4	2.7%
<b>Total</b>	<b>92</b>	<b>140</b>	<b>112</b>	<b>2</b>		<b>346</b>	<b>90.0</b>	

#### Shortleaf Pine - Sawtimber International 1/4 Scale

DBH	Number of Logs					# Trees	Volume	% of Total
	1-Log	2-Log	3-Log	4-Log	5-Log			
10	9					9	0.3	8.8%
12	5	5	1			11	0.9	23.4%
14		3	5			8	1.4	36.8%
16	1		4			5	1.1	30.9%
<b>Total</b>	<b>15</b>	<b>8</b>	<b>10</b>			<b>33</b>	<b>3.7</b>	

#### Virginia Pine - Sawtimber International 1/4 Scale

DBH	Number of Logs					# Trees	Volume	% of Total
	1-Log	2-Log	3-Log	4-Log	5-Log			
10	15					15	0.5	12.3%
12	17	5				22	1.4	32.1%
14	5	2				7	0.7	15.9%
16		2	2			4	0.9	20.3%
18		1				1	0.2	5.6%
20	1		1			2	0.6	13.8%
<b>Total</b>	<b>38</b>	<b>10</b>	<b>3</b>			<b>51</b>	<b>4.4</b>	

#### White Oak - Sawtimber International 1/4 Scale

DBH	Number of Logs					# Trees	Volume	% of Total
	1-Log	2-Log	3-Log	4-Log	5-Log			
12	282					282	15.8	6.6%
14	152	206				358	41.7	17.3%
16	71	227	71			369	69.3	28.8%
18	26	140	76			242	64.0	26.6%
20	7	53	31			91	31.1	12.9%
22	1	22	8			31	13.0	5.4%
24	1	6	2			9	4.4	1.8%
26	1	1	1			3	1.6	0.7%
<b>Total</b>	<b>541</b>	<b>655</b>	<b>189</b>			<b>1,385</b>	<b>240.8</b>	

## Orf Tract Clear Cut

### Timber Marketing & Management, Inc.

Cruise Date: Wednesday, October 23, 2019  
 Owner's Name: Orf  
 County/State: Fluvanna County, VA

#### Sawtimber Volume by Timber Type

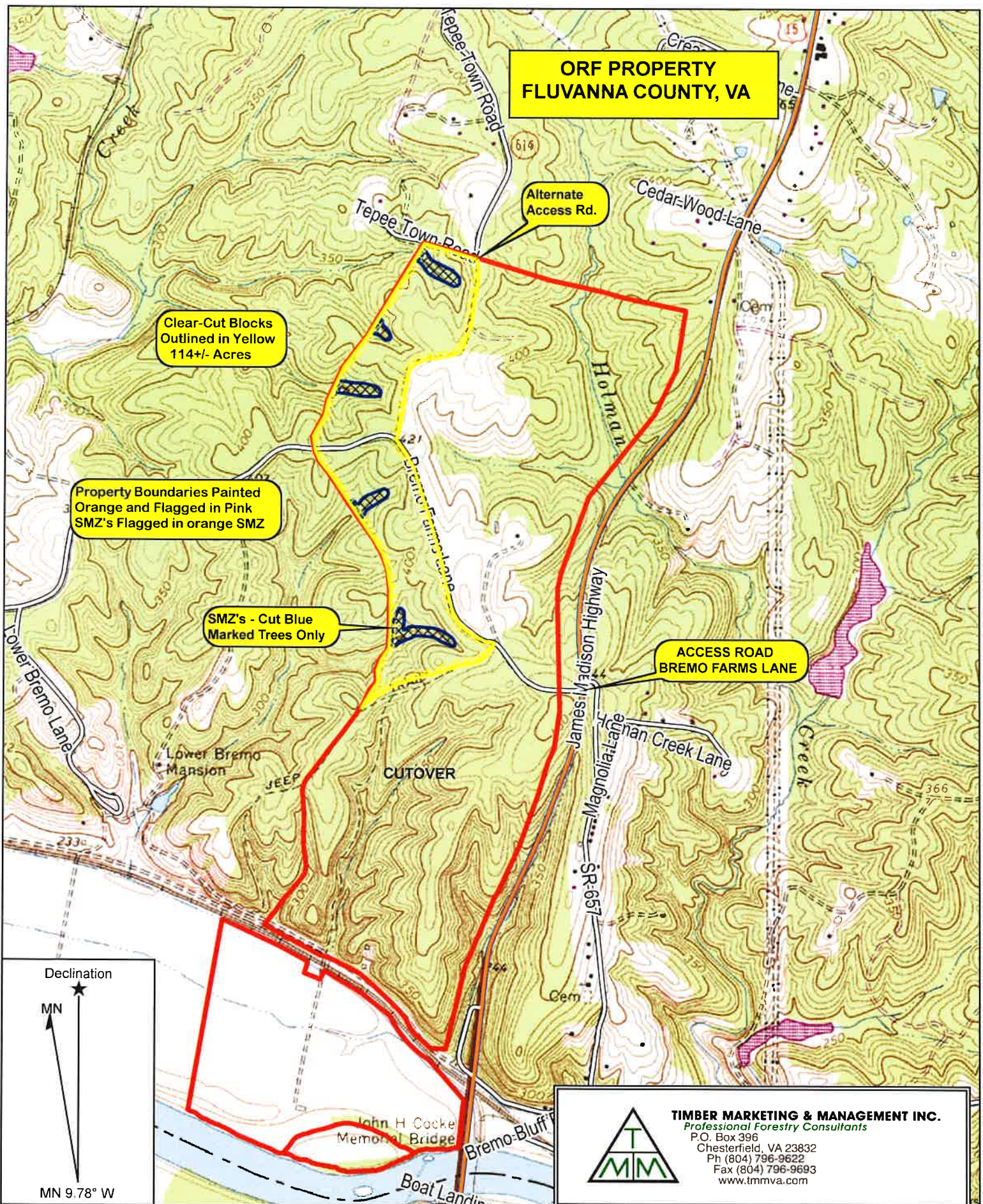
<u>Timber Type</u>	<u># Trees</u>	<u>Volume</u>	<u>Avg BF/Tree</u>	<u>% of Total</u>
Hardwood	4,714	867.6	184.1	99.1%
Pine	85	8.3	97.2	0.9%
<b>Total</b>	<b>4,799</b>	<b>875.9</b>	<b>182.5</b>	

#### Sawtimber Volume by DBH

<u>DBH</u>	<u># Trees</u>	<u>Volume</u>	<u>Avg BF/Tree</u>	<u>% of Total</u>
10	24	0.9	36.0	0.1%
12	1,016	57.3	56.4	6.5%
14	1,180	135.4	114.7	15.5%
16	1,128	212.9	188.8	24.3%
18	810	216.1	266.8	24.7%
20	409	142.7	348.8	16.3%
22	167	74.3	444.7	8.5%
24	48	25.4	528.6	2.9%
26	15	9.1	609.2	1.0%
28	2	1.8	904.0	0.2%
<b>Total</b>	<b>4,799</b>	<b>875.9</b>	<b>182.5</b>	

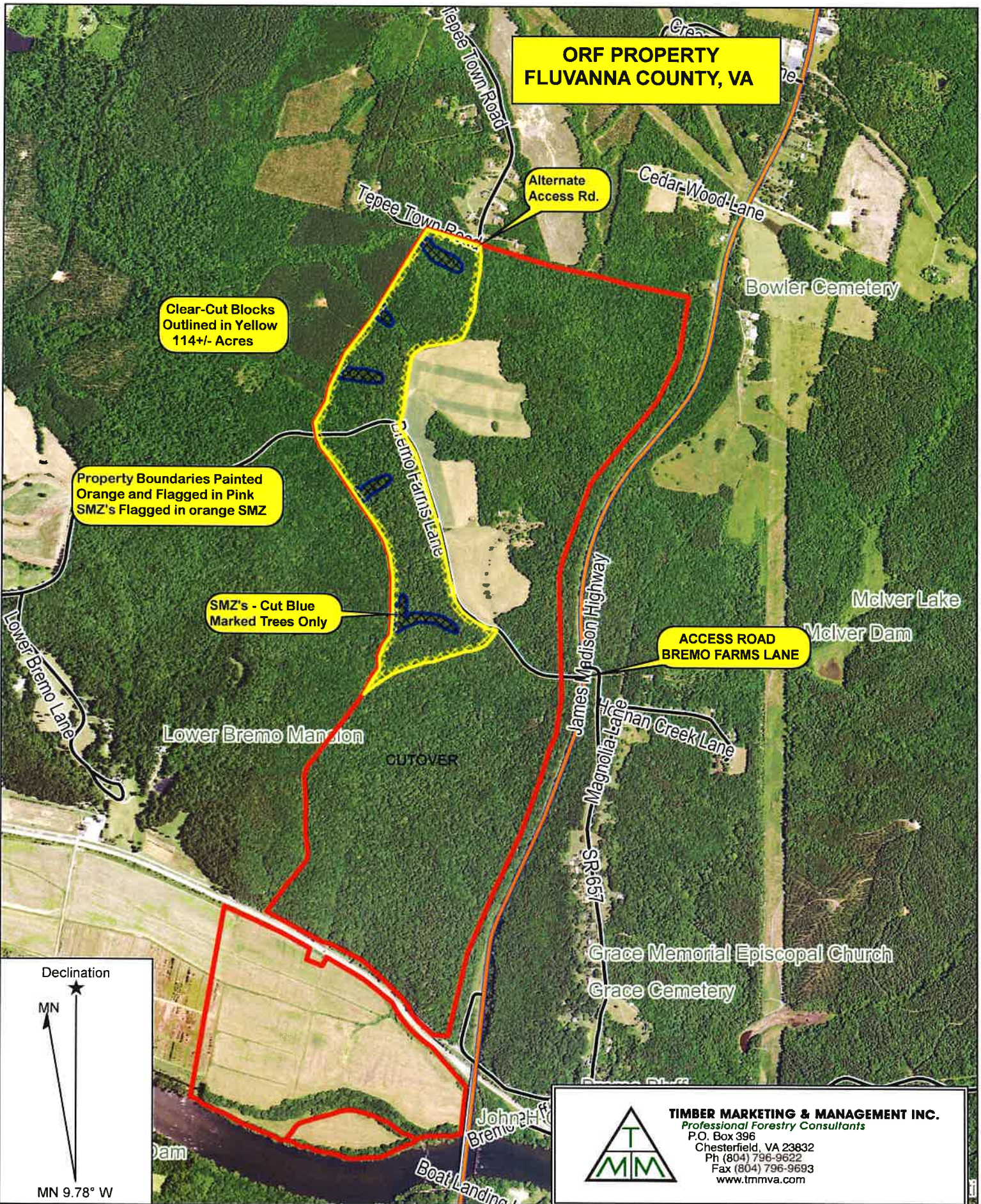
#### Sawtimber Volume by Species

<u>Species</u>	<u># Trees</u>	<u>Volume</u>	<u>Avg BF/Tree</u>	<u>% of Total</u>
Beech	147	16.8	114.0	1.9%
Black Cherry	2	0.3	162.5	0.0%
Cedar	1	0.2	190.0	0.0%
Chestnut Oak	752	122.6	163.1	14.0%
Gum	40	5.9	148.0	0.7%
Hickory	201	28.3	140.8	3.2%
Maple	309	36.4	117.8	4.2%
Poplar	922	202.2	219.3	23.1%
Red Oak	610	124.2	203.7	14.2%
Scarlet Oak	346	90.0	260.1	10.3%
Shortleaf Pine	33	3.7	111.3	0.4%
Virginia Pine	51	4.4	86.2	0.5%
White Oak	1,385	240.8	173.9	27.5%
<b>Total</b>	<b>4,799</b>	<b>875.9</b>	<b>182.5</b>	



Name: ORF TRACT  
Date: 01/07/20  
Scale: 1 inch = 1,500 ft.

Location: 037° 43' 45.1516" N, 078° 18' 05.2391" W  
114+/- Acre Clear-Cut



**ORF PROPERTY  
FLUVANNA COUNTY, VA**

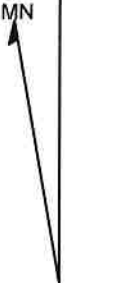
Clear-Cut Blocks  
Outlined in Yellow  
114+/- Acres

Property Boundaries Painted  
Orange and Flagged in Pink  
SMZ's Flagged in orange SMZ

SMZ's - Cut Blue  
Marked Trees Only

**ACCESS ROAD  
BREMO FARMS LANE**

Declination



MN 9.78° W



**TIMBER MARKETING & MANAGEMENT INC.**  
Professional Forestry Consultants  
P.O. Box 396  
Chesterfield, VA 23832  
Ph (804) 796-9622  
Fax (804) 796-9693  
www.tmmva.com

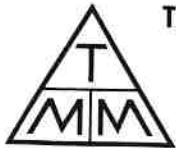
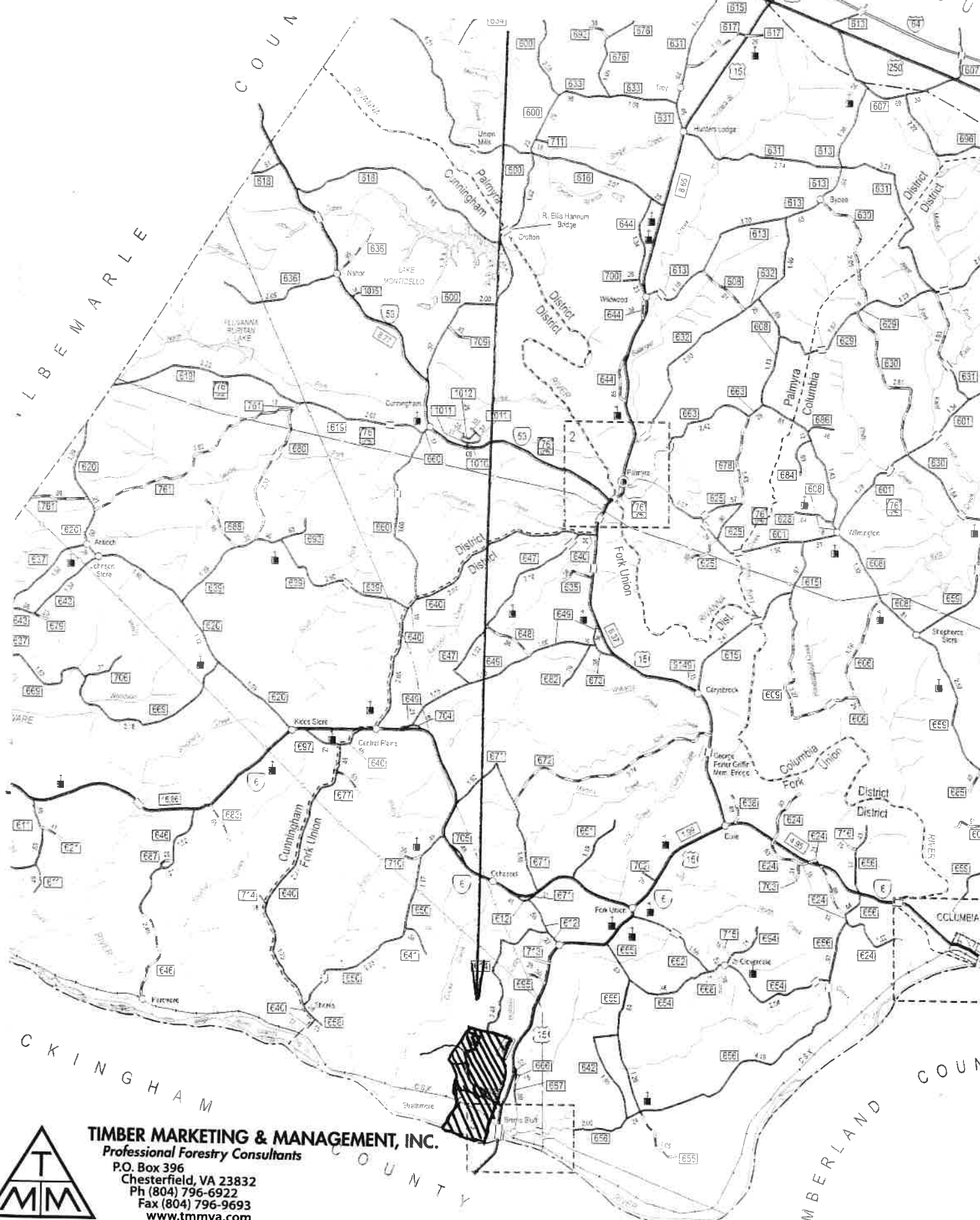
Name: ORF TRACT  
Date: 01/07/20  
Scale: 1 inch = 1,500 ft.

Location: 037° 43' 43.6748" N, 078° 18' 05.9329" W  
114+/- Acre Clear-Cut

# ORF PROPERTY

## Fluvanna County, VA

RT 689 MAINTAINED  
IN FLUVANNA COUNTY



**TIMBER MARKETING & MANAGEMENT, INC.**  
Professional Forestry Consultants  
P.O. Box 396  
Chesterfield, VA 23832  
Ph (804) 796-6922  
Fax (804) 796-9693  
[www.tmmva.com](http://www.tmmva.com)