



**TIMBER MARKETING & MANAGEMENT INC.**

*Professional Forestry Consultants*

P.O. Box 396  
 Chesterfield, VA 23832  
 Ph (804) 796-9622  
 Fax (804) 796-9693  
 www.tmmva.com

	<b>Orndorff</b>	<b>Lane</b>
<b>Sale Date:</b>	<b>April 11, 2019</b>	<b>April 11, 2019</b>
<b>Time:</b>	<b>11:00 a.m.</b>	<b>11:00 a.m.</b>
<b>Day:</b>	<b>Thursday</b>	<b>Thursday</b>
<b>Total Vol./Acre:</b>	<b>5,201 B. F.</b>	<b>7,635 B. F.</b>
<b>Pine Vol/Tree:</b>	<b>57 B. F.</b>	<b>81 B. F.</b>
<b>Hdwd. Vol/Tree:</b>	<b>145 B. F.</b>	<b>146 B. F.</b>

**CLEAR- CUT SALE**

Having been employed by **Douglas & Linda Orndorff and Danny Lane** we solicit bids on all merchantable timber on a **COMBINED 158 +/- acres** in Spotsylvania County, Virginia and as shown on the attached map.

We made a 4% plot cruise on the Lane tract and a 10% plot cruise on the Orndorff tract of the pulpwood trees to be harvested. Our estimate of their volume is below. Corresponding cords are shown in the attached stand and stock table. Topwood tons are estimates.

	<u><b>Orndorff</b></u>	<u><b>Lane</b></u>	<u><b>Total</b></u>	
<u><b>Pulpwood</b></u>	<u><b>Tons</b></u>	<u><b>Tons</b></u>	<u><b>Tons</b></u>	
Pine	466	567	1,033	
Soft Hardwood	624	380	1,004	
Hard Hardwood	1,053	1,963	3,016	
Topwood	<u>1,102</u>	<u>1,735</u>	<u>2,837</u>	
<b>Total:</b>	<b>3,245</b>	<b>4,645</b>	<b>7,890</b>	<b>Total Tons</b>

We made a 100% tree count (on both tracts) of the sawtimber-size trees to be harvested. Our estimate of their volume is:

	<u><b>Orndorff</b></u>	<u><b>Lane</b></u>	<u><b>Total</b></u>
<u><b>Sawtimber</b></u>	<u><b>MBF</b></u>	<u><b>MBF</b></u>	<u><b>MBF</b></u>
White Oak	85,900	179,600	265,500
Chestnut Oak	19,900	194,100	214,000
Red Oak	68,000	20,500	88,500
Scarlet Oak	0	60,600	60,600
Northern Red Oak	9,200	2,300	11,500
Poplar	90,200	142,800	233,000
Hickory	22,100	29,100	51,200
Gum	15,500	11,100	26,600
Loblolly / Shortleaf Pine	1,000	3,400	4,400
Maple	1,900	1,800	3,700
Aspen	200	0	200
Virginia Pine	<u>24,200</u>	<u>64,700</u>	<u>88,900</u>
	<b>338,100</b>	<b>710,000</b>	<b>1,048,100 BF Int 1/4" Scale</b>

The above volumes are not guaranteed; however, care was taken in the field to assemble the above tables. You should note how your utilization practices may vary from the above and make any necessary adjustments.

### Conditions


1. A period of time of 24 months will be allowed to cut and remove the timber.
2. Roads **must** be maintained and restored to their original condition upon completion of the logging. Any newly constructed roads and decks must be left in a graded condition and must be seeded upon completion of logging. Any newly constructed haul roads, skid roads and log decks and all logging operations must be in accordance with the guidelines set out in the **Best Management Practices Manual** of the Virginia Department of Forestry.
3. No tops or laps will be allowed to remain in the streams, buffers or over cutting boundaries. They must be pulled back into the harvest area immediately.
4. Only the blue marked trees are to be cut from Streamside Management Zones on the Lane Tract. Refer to map.
5. No logging will be permitted during excessively wet weather conditions as determined by Timber Marketing & Management, Inc. If logging is halted due to weather conditions, then an extension of time equal to the time lost will be granted.
6. A \$4,000.00 performance bond will be paid at closing and held by Timber Marketing & Management, Inc. to insure compliance with all BMP requirements, road maintenance and conditions of the Timber Purchase Contract.
7. The driveway and woods road on the Orndorff tract may be used to review the timber but not to be used for harvesting.

Only sealed bids will be accepted and owners reserve the right to reject any or all bids. BIDS SHOULD BE SUBMITTED PRIOR TO THE TIME OF BID OPENING AND CAN BE SUBMITTED VIA: Mail to: Timber Marketing & Management, Inc. P. O. Box 396, Chesterfield, Virginia 23832 **OR** hand delivered to 9520 Ironbridge Road, Chesterfield, Virginia **OR** telephoned in to 804-796-9622 **OR** faxed to 804-796-9693 **OR** emailed to [tmm4u@aol.com](mailto:tmm4u@aol.com) Bids must be made on a lump-sum basis and must be received at this address no later than the posted bid date and time as shown on the cover. Closing shall take place within 30 days of bid acceptance.

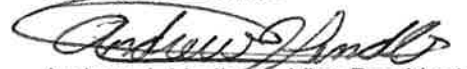
There will be no scheduled show trip of the tract; however, you may call and set an appointment or you may inspect the property at your own leisure.

An electronic copy of this sale notice, including maps and volumes, is available for download and viewing on our website at [www.tmmva.com](http://www.tmmva.com) under the Timber Sale Notices section.

Sincerely,  
Timber Marketing & Management, Inc.



Stephen P. Lindberg, President  
804-512-3578 mobile  
804-796-9622 office



Andrew J. Lindberg, Vice President  
804-338-7851 mobile  
804-796-9622 office

## Orndorff Tract

### Timber Marketing & Management, Inc.

Professional Forestry Consultants

P.O. Box 396

Chesterfield, VA 23832-0000

Phone: (804) 796-9622 • Fax: (804) 796-9693

Pulpwood Cruise: 10.0%

Sawtimber Cruise: 100.0%

Cruise Date: Tuesday, February 26, 2019

Owner's Name: Doug Omdorff

County/State: Spotsylvania County, VA

Acreage: 65+/-

Cruise Type: Tree Count

Harvest Type: Clear Cut

Total BF/Acre: 5,201

Pine Vol/Tree: 57.3

Hardwood Vol/Tree: 154.1

#### Volume Legend:

- 1) Diameters shown in inches (DBH)
- 2) Logs measured in 16' increments
- 3) Sawtimber volumes are shown in thousands of board feet (MBF)
- 4) Volume scale used for each species of sawtimber is noted
- 5) Pulpwood volumes are shown in standard cords (128 cubic feet)

#### Comments:

#### Pulpwood Standard Cord

DBH	Wood Classification						# Trees	Volume	% of Total
	Pine		Soft Hardwood		Hard Hardwood				
# Trees	Volume	# Trees	Volume	# Trees	Volume	# Trees	Volume		
6	540	24	1,620	63	2,190	85			
8	830	83	1,090	86	1,730	137			
10	380	63	510	68	1,030	137			
12	40	11	100	20	230	46			
14			10	3					
<b>Total</b>	<b>1,790</b>	<b>181</b>	<b>3,330</b>	<b>240</b>	<b>5,180</b>	<b>405</b>			

#### Aspen - Sawtimber International 1/4 Scale

DBH	Number of Logs					# Trees	Volume	% of Total
	1-Log	2-Log	3-Log	4-Log	5-Log			
12	3					3	0.2	100.0%
<b>Total</b>	<b>3</b>					<b>3</b>	<b>0.2</b>	

#### Chestnut Oak - Sawtimber International 1/4 Scale

DBH	Number of Logs					# Trees	Volume	% of Total
	1-Log	2-Log	3-Log	4-Log	5-Log			
12	94					94	5.3	26.4%
14	41	19				60	6.1	30.5%
16	11	14				25	3.9	19.5%
18	10	3				13	2.2	11.0%
20	2	3	1			6	1.7	8.7%
22	1					1	0.2	1.1%
26		1				1	0.6	2.8%
<b>Total</b>	<b>159</b>	<b>40</b>	<b>1</b>			<b>200</b>	<b>19.9</b>	

#### Gum - Sawtimber International 1/4 Scale

DBH	Number of Logs					# Trees	Volume	% of Total
	1-Log	2-Log	3-Log	4-Log	5-Log			
12	66					66	3.7	23.9%
14	14	26		1		41	5.0	32.6%
16	5	9	2			16	2.8	18.0%
18	1	4	6			11	3.2	20.4%
22	1					1	0.2	1.4%
26		1				1	0.6	3.6%
<b>Total</b>	<b>87</b>	<b>40</b>	<b>8</b>	<b>1</b>		<b>136</b>	<b>15.5</b>	

#### Hickory - Sawtimber International 1/4 Scale

DBH	Number of Logs					# Trees	Volume	% of Total
	1-Log	2-Log	3-Log	4-Log	5-Log			
12	22					22	1.2	5.6%
14	10	20				30	3.7	16.5%
16	1	14	5			20	4.1	18.4%
18	1	7	7			15	4.2	19.2%
20	1	5	4			10	3.5	15.7%
22		2	3	1		6	3.0	13.6%
24		1	1			2	1.1	5.0%
26		1	1			2	1.3	6.0%
<b>Total</b>	<b>35</b>	<b>50</b>	<b>21</b>	<b>1</b>		<b>107</b>	<b>22.1</b>	

#### Loblolly/Shortleaf Pine - Sawtimber International 1/4 Scale

DBH	Number of Logs					# Trees	Volume	% of Total
	1-Log	2-Log	3-Log	4-Log	5-Log			
10	3					3	0.1	11.3%
12		3	2			5	0.5	54.0%
14		1				1	0.1	14.8%
16		1				1	0.2	19.9%
<b>Total</b>	<b>3</b>	<b>5</b>	<b>2</b>			<b>10</b>	<b>1.0</b>	

#### Maple - Sawtimber International 1/4 Scale

DBH	Number of Logs					# Trees	Volume	% of Total
	1-Log	2-Log	3-Log	4-Log	5-Log			
12	10					10	0.6	29.7%
14	4					4	0.3	17.6%
16	5					5	0.6	29.7%
18	3					3	0.4	22.9%
<b>Total</b>	<b>22</b>					<b>22</b>	<b>1.9</b>	

## Orndorff Tract

### Timber Marketing & Management, Inc.

Cruise Date: Tuesday, February 26, 2019  
 Owner's Name: Doug Orndorff  
 County/State: Spotsylvania County, VA

#### Northern Red Oak - Sawtimber International 1/4 Scale

DBH	Number of Logs					# Trees	Volume	% of Total
	1-Log	2-Log	3-Log	4-Log	5-Log			
12	4					4	0.2	2.4%
14	4	2				6	0.6	6.7%
16	2	4	1			7	1.2	13.5%
18	1	3	2			6	1.6	17.0%
20		7	1			8	2.6	28.6%
22	1	2				3	1.0	10.8%
24		1				1	0.5	5.1%
26		1				1	0.6	6.1%
28			1			1	0.9	9.8%
<b>Total</b>	<b>12</b>	<b>20</b>	<b>5</b>			<b>37</b>	<b>9.2</b>	

#### Poplar - Sawtimber International 1/4 Scale

DBH	Number of Logs					# Trees	Volume	% of Total
	1-Log	2-Log	3-Log	4-Log	5-Log			
12	132	4				136	7.8	8.6%
14	19	78	23			120	16.9	18.7%
16	4	30	37	3		74	16.5	18.3%
18	4	13	29	6		52	16.0	17.7%
20	2	4	27	6		39	16.2	18.0%
22		5	9	2		16	8.0	8.8%
24		1	7	2		10	6.5	7.2%
26			2			2	1.5	1.7%
28			1			1	0.9	1.0%
<b>Total</b>	<b>161</b>	<b>135</b>	<b>135</b>	<b>19</b>		<b>450</b>	<b>90.2</b>	

#### Red Oak - Sawtimber International 1/4 Scale

DBH	Number of Logs					# Trees	Volume	% of Total
	1-Log	2-Log	3-Log	4-Log	5-Log			
12	193					193	10.8	15.9%
14	61	73				134	15.4	22.6%
16	19	56	10			85	15.3	22.5%
18	4	32	10			46	11.9	17.5%
20	6	10	8	1		25	8.2	12.0%
22		5	4			9	4.0	6.0%
24		1	1			2	1.1	1.6%
26		1	1			2	1.3	1.9%
<b>Total</b>	<b>283</b>	<b>178</b>	<b>34</b>	<b>1</b>		<b>496</b>	<b>68.0</b>	

#### Virginia Pine - Sawtimber International 1/4 Scale

DBH	Number of Logs					# Trees	Volume	% of Total
	1-Log	2-Log	3-Log	4-Log	5-Log			
10	250	9				259	9.5	39.4%
12	80	52	1			133	9.4	38.8%
14	9	15	2			26	3.2	13.4%
16	2	5				7	1.2	4.8%
18	1	3				4	0.9	3.7%
<b>Total</b>	<b>342</b>	<b>84</b>	<b>3</b>			<b>429</b>	<b>24.2</b>	

#### White Oak - Sawtimber International 1/4 Scale

DBH	Number of Logs					# Trees	Volume	% of Total
	1-Log	2-Log	3-Log	4-Log	5-Log			
12	144	1				145	8.2	9.5%
14	88	83				171	19.0	22.1%
16	40	86	6			132	22.4	26.0%
18	17	59	14			90	21.8	25.3%
20	3	24	2			29	8.9	10.4%
22	3	5	2			10	3.7	4.3%
24			1			1	0.6	0.7%
28		1				1	0.7	0.8%
30		1				1	0.8	0.9%
<b>Total</b>	<b>295</b>	<b>260</b>	<b>25</b>			<b>580</b>	<b>85.9</b>	

---

**Orndorff Tract**

---

**Timber Marketing & Management, Inc.**

Cruise Date: Tuesday, February 26, 2019  
Owner's Name: Doug Orndorff  
County/State: Spotsylvania County, VA

**Sawtimber Volume by Timber Type**

<u>Timber Type</u>	<u># Trees</u>	<u>Volume</u>	<u>Avg BF/Tree</u>	<u>% of Total</u>
Hardwood	2,031	312.9	154.1	92.6%
Pine	439	25.2	57.3	7.4%
Total	2,470	338.0	136.9	

**Sawtimber Volume by DBH**

<u>DBH</u>	<u># Trees</u>	<u>Volume</u>	<u>Avg BF/Tree</u>	<u>% of Total</u>
10	262	9.6	36.8	2.9%
12	811	47.8	58.9	14.1%
14	593	70.3	118.6	20.8%
16	372	68.1	183.1	20.1%
18	240	62.1	258.6	18.4%
20	117	41.1	351.5	12.2%
22	46	20.1	436.9	5.9%
24	16	9.9	616.4	2.9%
26	9	5.9	650.9	1.7%
28	3	2.5	820.7	0.7%
30	1	0.8	758.0	0.2%
Total	2,470	338.0	136.9	

**Sawtimber Volume by Species**

<u>Species</u>	<u># Trees</u>	<u>Volume</u>	<u>Avg BF/Tree</u>	<u>% of Total</u>
Aspen	3	0.2	56.0	0.0%
Chestnut Oak	200	19.9	99.7	5.9%
Gum	136	15.5	113.6	4.6%
Hickory	107	22.1	206.2	6.5%
Loblolly/Shortleaf Pine	10	1.0	95.5	0.3%
Maple	22	1.9	85.6	0.6%
Northern Red Oak	37	9.2	248.4	2.7%
Poplar	450	90.2	200.5	26.7%
Red Oak	496	68.0	137.1	20.1%
Virginia Pine	429	24.2	56.4	7.2%
White Oak	580	85.9	148.2	25.4%
Total	2,470	338.0	136.9	

## Lane Tract

### Timber Marketing & Management, Inc.

Professional Forestry Consultants

P.O. Box 396

Chesterfield, VA 23832-0000

Phone: (804) 796-9622 • Fax: (804) 796-9693

Pulpwood Cruise: 4.0%

Sawtimber Cruise: 100.0%

Cruise Date: Monday, November 12, 2018

Owner's Name: Lane

County/State: Spotsylvania County, VA

Acreage: 93+/-

Cruise Type: Tree Count

Harvest Type: Clear Cut

Total BF/Acre: 7,635

Pine Vol/Tree: 81.3

Hardwood Vol/Tree: 146.3

#### Volume Legend:

- 1) Diameters shown in inches (DBH)
- 2) Logs measured in 16' increments
- 3) Sawtimber volumes are shown in thousands of board feet (MBF)
- 4) Volume scale used for each species of sawtimber is noted
- 5) Pulpwood volumes are shown in standard cords (128 cubic feet)

#### Comments:

#### Pulpwood

Standard Cord

DBH	Wood Classification							
	Pine		Soft Hardwood		Hard Hardwood		Cedar	
# Trees	Volume	# Trees	Volume	# Trees	Volume	# Trees	Volume	
6	325	15	550	21	1,775	69		
8	575	58	575	45	2,400	190		
10	575	95	325	43	2,425	323		
12	200	53	150	30	775	153		
14			25	7	75	20		
<b>Total</b>	<b>1,675</b>	<b>220</b>	<b>1,625</b>	<b>146</b>	<b>7,450</b>	<b>755</b>		

#### Chestnut Oak - Sawtimber

International 1/4 Scale

DBH	Number of Logs							
	1-Log	2-Log	3-Log	4-Log	5-Log	# Trees	Volume	% of Total
12	576					576	32.3	16.6%
14	246	275				521	59.2	30.5%
16	119	196	19			334	55.4	28.6%
18	47	78	14			139	30.8	15.9%
20	8	27	4			39	11.6	6.0%
22	1	9				10	3.7	1.9%
24		1	1			2	1.1	0.6%
<b>Total</b>	<b>997</b>	<b>586</b>	<b>38</b>			<b>1,621</b>	<b>194.1</b>	

#### Gum - Sawtimber

International 1/4 Scale

DBH	Number of Logs							
	1-Log	2-Log	3-Log	4-Log	5-Log	# Trees	Volume	% of Total
12	42					42	2.4	21.3%
14	13	23				36	4.3	39.1%
16	2	10	3			15	2.9	26.2%
18	1	1	2			4	1.1	9.6%
20			1			1	0.4	3.9%
<b>Total</b>	<b>58</b>	<b>34</b>	<b>6</b>			<b>98</b>	<b>11.1</b>	

#### Hickory - Sawtimber

International 1/4 Scale

DBH	Number of Logs					# Trees	Volume	% of Total
	1-Log	2-Log	3-Log	4-Log	5-Log			
12	51					51	2.9	9.8%
14	24	40				64	7.6	26.2%
16	14	31	7			52	9.3	31.8%
18	3	18	3			24	5.9	20.3%
20	1	3	1			5	1.6	5.3%
22		1	2			3	1.4	5.0%
24		1				1	0.5	1.6%
<b>Total</b>	<b>93</b>	<b>94</b>	<b>13</b>			<b>200</b>	<b>29.1</b>	

#### Loblolly/Shortleaf Pine - Sawtimber

International 1/4 Scale

DBH	Number of Logs					# Trees	Volume	% of Total
	1-Log	2-Log	3-Log	4-Log	5-Log			
10	1					1	0.0	1.1%
12	1	3	4			8	0.8	23.8%
14		3	2			5	0.8	23.3%
16		3	1			4	0.8	24.2%
18		1				1	0.2	7.3%
20		1				1	0.3	9.2%
22		1				1	0.4	11.3%
<b>Total</b>	<b>2</b>	<b>12</b>	<b>7</b>			<b>21</b>	<b>3.4</b>	

#### Maple - Sawtimber

International 1/4 Scale

DBH	Number of Logs					# Trees	Volume	% of Total
	1-Log	2-Log	3-Log	4-Log	5-Log			
12	6					6	0.3	18.2%
14	3					3	0.2	13.5%
16	7	1				8	1.0	52.7%
18	2					2	0.3	15.6%
<b>Total</b>	<b>18</b>	<b>1</b>				<b>19</b>	<b>1.8</b>	

#### Northern Red Oak - Sawtimber

International 1/4 Scale

DBH	Number of Logs					# Trees	Volume	% of Total
	1-Log	2-Log	3-Log	4-Log	5-Log			
12	3					3	0.2	7.2%
14	1	3				4	0.5	21.6%
16	1	4				5	0.9	37.3%
18	1		1			2	0.5	20.5%
20		1				1	0.3	13.4%
<b>Total</b>	<b>6</b>	<b>8</b>	<b>1</b>			<b>15</b>	<b>2.3</b>	

## Lane Tract

### Timber Marketing & Management, Inc.

Cruise Date: Monday, November 12, 2018  
 Owner's Name: Lane  
 County/State: Spotsylvania County, VA

#### Poplar - Sawtimber International 1/4 Scale

DBH	Number of Logs					# Trees	Volume	% of Total
	1-Log	2-Log	3-Log	4-Log	5-Log			
12	141	1				142	8.0	5.6%
14	24	150	17			191	26.3	18.4%
16	2	45	83	3		133	30.9	21.7%
18	4	22	75	10		111	35.3	24.7%
20	2	10	37	7		56	22.9	16.0%
22		5	10	2		17	8.5	5.9%
24		3	7			10	5.9	4.1%
26		1	2			3	2.1	1.5%
28		2	1			3	2.2	1.5%
30		1				1	0.8	0.5%
<b>Total</b>	<b>173</b>	<b>240</b>	<b>232</b>	<b>22</b>		<b>667</b>	<b>142.8</b>	

#### White Oak - Sawtimber International 1/4 Scale

DBH	Number of Logs					# Trees	Volume	% of Total
	1-Log	2-Log	3-Log	4-Log	5-Log			
12	346					346	19.4	10.8%
14	163	249				412	48.6	27.1%
16	58	195	30			283	51.2	28.5%
18	14	96	29			139	35.6	19.8%
20	5	36	9			50	16.1	8.9%
22	3	9	4			16	6.3	3.5%
24		1				1	0.5	0.3%
26		2				2	1.1	0.6%
32		1				1	0.9	0.5%
<b>Total</b>	<b>589</b>	<b>589</b>	<b>72</b>			<b>1,250</b>	<b>179.6</b>	

#### Red Oak - Sawtimber International 1/4 Scale

DBH	Number of Logs					# Trees	Volume	% of Total
	1-Log	2-Log	3-Log	4-Log	5-Log			
12	51					51	2.9	13.9%
14	19	32				51	6.1	29.7%
16	6	17	4			27	4.9	24.0%
18	1	8	2			11	2.8	13.6%
20		5	1			6	2.0	9.7%
22		2	1			3	1.3	6.3%
26		1				1	0.6	2.7%
<b>Total</b>	<b>77</b>	<b>65</b>	<b>8</b>			<b>150</b>	<b>20.5</b>	

#### Scarlet Oak - Sawtimber International 1/4 Scale

DBH	Number of Logs					# Trees	Volume	% of Total
	1-Log	2-Log	3-Log	4-Log	5-Log			
12	95					95	5.3	8.8%
14	34	64				98	11.8	19.6%
16	10	58	23			91	18.0	29.8%
18	5	32	13			50	13.0	21.5%
20		20	5			25	8.4	13.9%
22		6	2			8	3.4	5.6%
26		1				1	0.6	0.9%
<b>Total</b>	<b>144</b>	<b>181</b>	<b>43</b>			<b>368</b>	<b>60.6</b>	

#### Virginia Pine - Sawtimber International 1/4 Scale

DBH	Number of Logs					# Trees	Volume	% of Total
	1-Log	2-Log	3-Log	4-Log	5-Log			
10	219	5				224	8.2	12.7%
12	234	148	39			421	31.4	48.6%
14	39	75	24			138	18.3	28.3%
16	3	18	10			31	6.3	9.8%
18	1		1			2	0.5	0.7%
<b>Total</b>	<b>496</b>	<b>246</b>	<b>74</b>			<b>816</b>	<b>64.7</b>	

---

## Lane Tract

---

### Timber Marketing & Management, Inc.

Cruise Date: Monday, November 12, 2018  
Owner's Name: Lane  
County/State: Spotsylvania County, VA

#### Sawtimber Volume by Timber Type

Timber Type	# Trees	Volume	Avg BF/Tree	% of Total
Hardwood	4,388	642.0	146.3	90.4%
Pine	837	68.1	81.3	9.6%
Total	5,225	710.1	135.9	

#### Sawtimber Volume by DBH

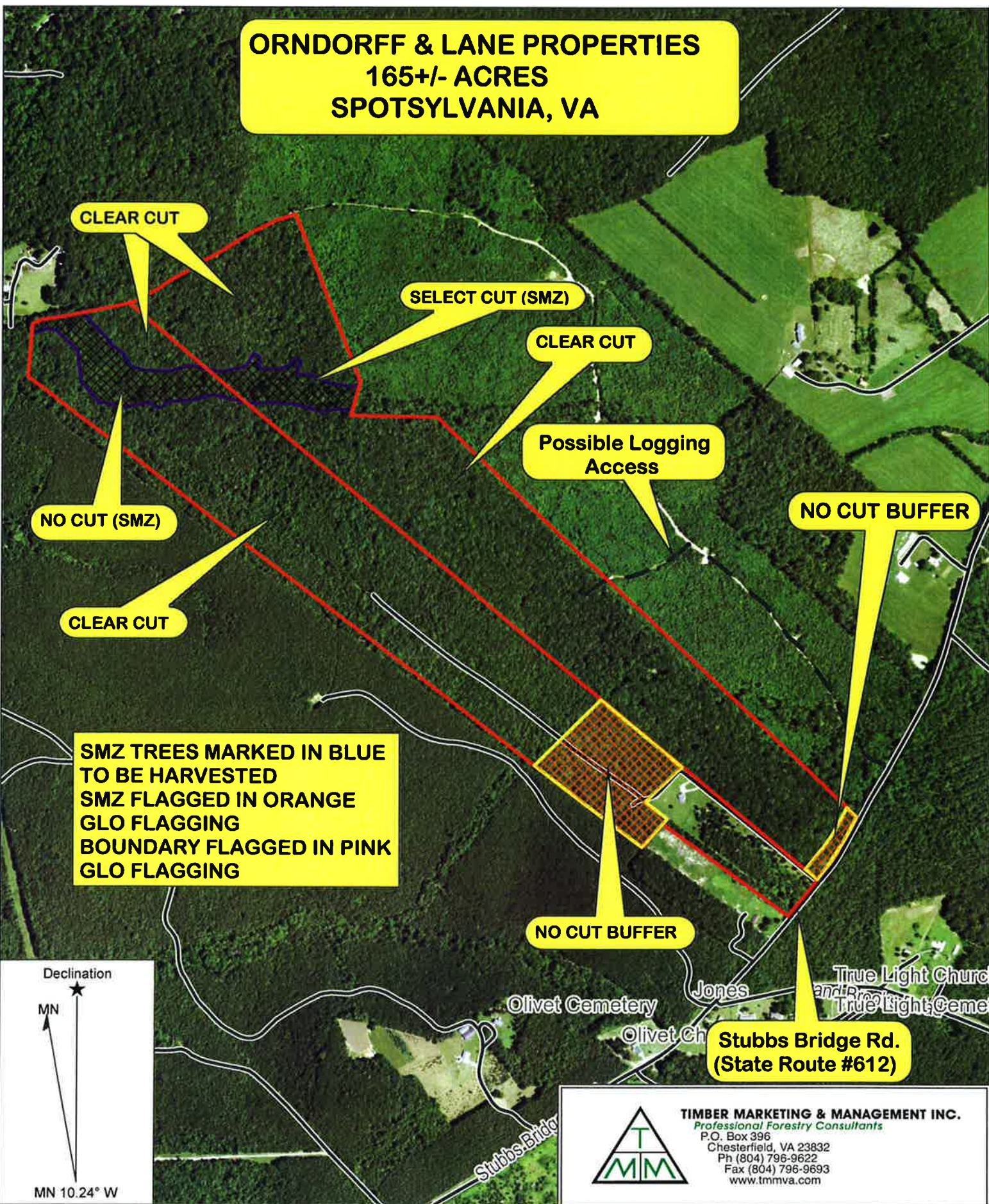
DBH	# Trees	Volume	Avg BF/Tree	% of Total
10	225	8.2	36.5	1.2%
12	1,741	105.7	60.7	14.9%
14	1,523	183.9	120.7	25.9%
16	983	181.7	184.8	25.6%
18	485	125.9	259.6	17.7%
20	184	63.6	345.6	9.0%
22	58	25.0	430.4	3.5%
24	14	8.0	569.0	1.1%
26	7	4.3	617.7	0.6%
28	3	2.2	737.3	0.3%
30	1	0.8	758.0	0.1%
32	1	0.9	870.0	0.1%
Total	5,225	710.1	135.9	

#### Sawtimber Volume by Species

Species	# Trees	Volume	Avg BF/Tree	% of Total
Chestnut Oak	1,621	194.1	119.8	27.3%
Gum	98	11.1	112.8	1.6%
Hickory	200	29.1	145.5	4.1%
Loblolly/Shortleaf Pine	21	3.4	162.8	0.5%
Maple	19	1.8	97.2	0.3%
Northern Red Oak	15	2.3	156.0	0.3%
Poplar	667	142.8	214.1	20.1%
Red Oak	150	20.5	136.9	2.9%
Scarlet Oak	368	60.6	164.6	8.5%
Virginia Pine	816	64.7	79.2	9.1%
White Oak	1,250	179.6	143.7	25.3%
Total	5,225	710.1	135.9	



**ORNDORFF & LANE PROPERTIES  
165+/- ACRES  
SPOTSYLVANIA, VA**



**NO CUT (SMZ)**

**CLEAR CUT**

**SELECT CUT (SMZ)**

**CLEAR CUT**

**Possible Logging Access**

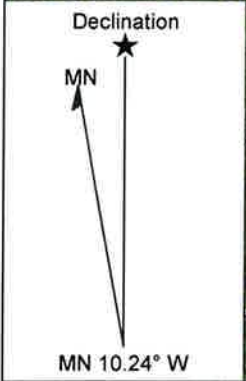
**NO CUT BUFFER**

**CLEAR CUT**

**SMZ TREES MARKED IN BLUE TO BE HARVESTED  
SMZ FLAGGED IN ORANGE  
GLO FLAGGING  
BOUNDARY FLAGGED IN PINK  
GLO FLAGGING**

**NO CUT BUFFER**

**Stubbs Bridge Rd.  
(State Route #612)**

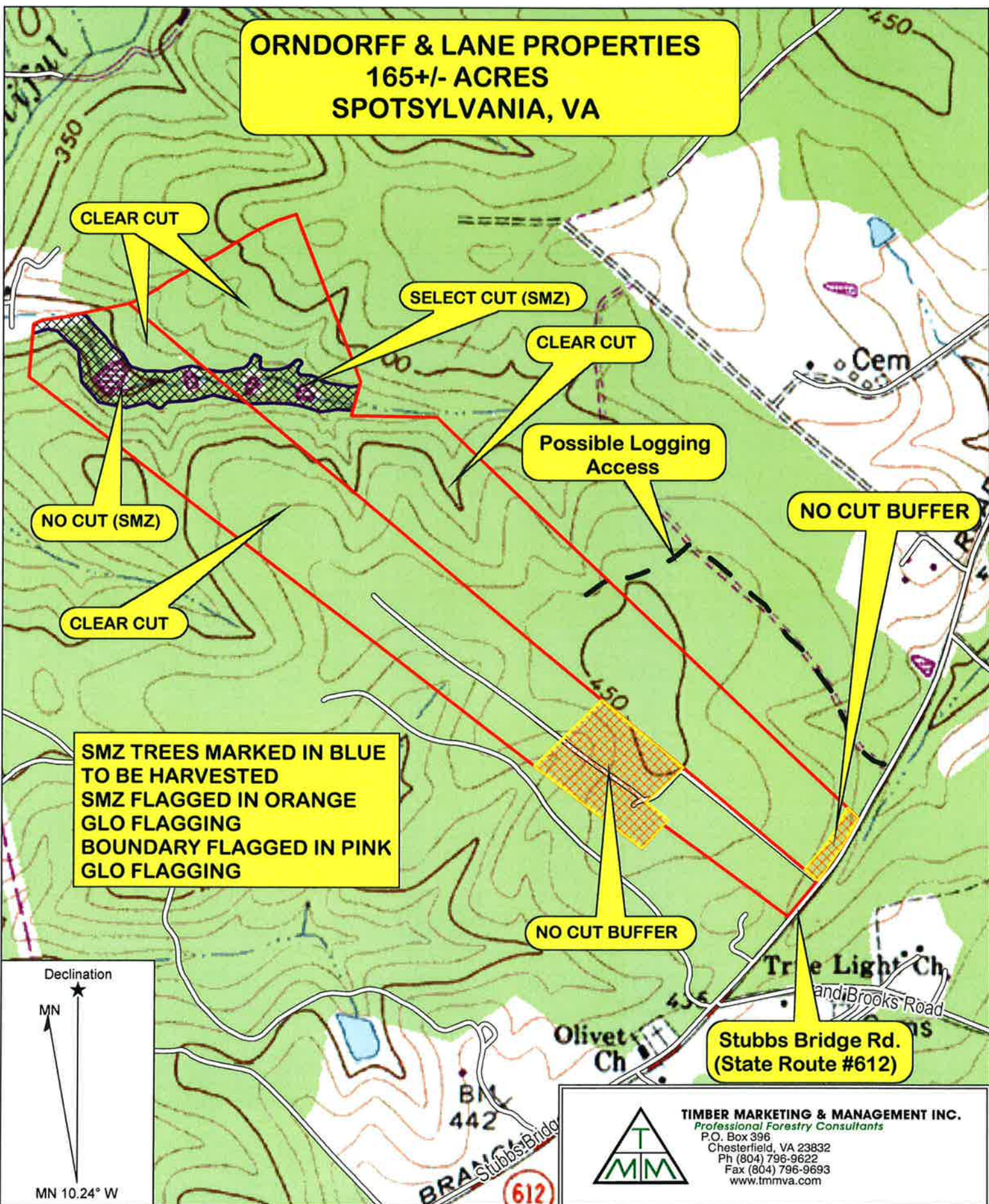


**TIMBER MARKETING & MANAGEMENT INC.**  
Professional Forestry Consultants  
P.O. Box 396  
Chesterfield, VA 23832  
Ph (804) 796-9622  
Fax (804) 796-9693  
www.tmmva.com

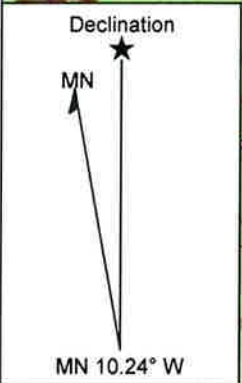
Name: ORNDORFF & LANE PROPERTIES  
Date: 03/01/19  
Scale: 1 inch = 833 ft.

Location: SPOTSYLVANIA, VA

**ORNDORFF & LANE PROPERTIES**  
**165+/- ACRES**  
**SPOTSYLVANIA, VA**



**SMZ TREES MARKED IN BLUE TO BE HARVESTED**  
**SMZ FLAGGED IN ORANGE**  
**GLO FLAGGING**  
**BOUNDARY FLAGGED IN PINK**  
**GLO FLAGGING**



**TIMBER MARKETING & MANAGEMENT INC.**  
*Professional Forestry Consultants*  
 P.O. Box 396  
 Chesterfield, VA 23832  
 Ph (804) 796-9622  
 Fax (804) 796-9693  
 www.tmmva.com

Name: ORNDORFF & LANE PROPERTIES  
 Date: 03/01/19  
 Scale: 1 inch = 833 ft.

Location: SPOTSYLVANIA, VA

