**TIMBER MARKETING & MANAGEMENT INC.***Professional Forestry Consultants*

P.O. Box 396  
Chesterfield, VA 23832  
Ph (804) 796-9622  
Fax (804) 796-9693  
www.tmmva.com

Sale Date:	<b>January 10, 2020</b>
Time:	11:00 a.m.
Day:	FRIDAY
Total Vol./Acre:	6,855 B. F.
Pine Vol/Tree:	200 B. F.
Hdwd. Vol/Tree:	149 B. F.

**CLEAR- CUT SALE  
NO SMZ'S ON PROPERTY  
GREAT ACCESS**

Having been employed by **SANDRA COOK, LILLY LEWIS, AND BEJAMIN BLAND ET ALS** we solicit bids on all merchantable timber on **39 +/- acres** on **Block 2 and Block 3** in Prince George County, Virginia and as shown on the attached map.

We made an appropriate plot cruise of the pulpwood trees to be harvested. Our estimate of their volume is:

<u>Pulpwood</u>	<u>Cords</u>	<u>Tons</u>
Pine	115	299
Hardwood	<u>235</u>	<u>611</u>
<b>Total:</b>	<b>350</b>	<b>910</b>

We made a 100% count of the sawtimber-size trees to be harvested. Our estimate of their volume is:

<u>Sawtimber</u>			
Loblolly Pine	107,200	Maple	4,800
Virginia Pine	4,900	Hickory	1,100
White Oak	54,300	Gum	14,500
Red Oak	53,900	Beech	<u>1,800</u>
Poplar	4,300		
		<b>Total:</b>	<b>246,800 BF Int 1/4" Scale</b>

The above volumes are not guaranteed; however, care was taken in the field to assemble the above tables. You should note how your utilization practices may vary from the above and make any necessary adjustments.

**Conditions**

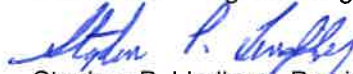
1. The landowner assumes responsibility for compliance with the Virginia State Seed Tree Law.
2. A period of time of 24 months will be allowed to cut and remove the timber.
3. Roads **must** be maintained and restored to their original condition upon completion of the logging. Any newly constructed roads and decks must be left in a graded condition and must be seeded upon completion of logging. Any newly constructed haul roads, skid roads and log decks and all logging operations must be in accordance with the guidelines set out in the **Best Management Practices Manual** of the Virginia Department of Forestry. No decking in open areas.
4. No tops or laps will be allowed to remain in the streams, fields, buffers or over cutting boundaries. They must be pulled back immediately.
5. No logging will be permitted during excessively wet weather conditions as determined by Timber Marketing & Management, Inc. If logging is halted due to weather conditions, then an extension of time equal to the time lost will be granted.
6. A \$2,000.00 performance bond will be paid at closing and held by Timber Marketing & Management, Inc. to insure compliance with all BMP requirements, road maintenance and conditions of the Timber Purchase Contract.

Only sealed bids will be accepted and owners reserve the right to reject any or all bids. BIDS SHOULD BE SUBMITTED PRIOR TO THE TIME OF BID OPENING AND CAN BE SUBMITTED VIA: Mail to: Timber Marketing & Management, Inc. P. O. Box 396, Chesterfield, Virginia 23832 **OR** hand delivered to 9520 Ironbridge Road, Chesterfield, Virginia **OR** telephoned in to 804-796-9622 **OR** faxed to 804-796-9693 **OR** emailed to tmm4u@aol.com Bids must be made on a lump-sum basis and must be received at this address no later than the posted bid date and time as shown on the cover. Closing shall take place within 30 days of bid acceptance.

There will be no scheduled show trip of the tract; however, you may call and set an appointment or you may inspect the property at your own leisure.

***An electronic copy of this sale notice, including maps and volumes, is available for download and viewing on our website at [www.tmmva.com](http://www.tmmva.com) under the Timber Sale Notices section.***

Sincerely,  
Timber Marketing & Management, Inc.



Stephen P. Lindberg, President  
804-512-3578 mobile  
804-796-9622 office

# PRINCE GEORGE COUNTY TRACTS VOLUME SUMMARY DECEMBER 2019

	COOK 10 +/- ACRES	LEWIS 18 +/- ACRES	BLAND (BLK 3) 8 +/- ACRES	BLAND (BLK 2) 3 +/- ACRES	TOTAL 39 +/- acres
	<u>Cords</u>	<u>Cords</u>	<u>Cords</u>	<u>Cords</u>	<u>Cords</u>
<u>Pulpwood</u>					
Pine	18	0	6	91	115
Hardwood	67	123	45	0	235
	<hr/>	<hr/>	<hr/>	<hr/>	<hr/>
	85	123	51	91	350 Cords
	<u>MBF</u>	<u>MBF</u>	<u>MBF</u>	<u>MBF</u>	<u>MBF</u>
<u>Sawtimber Volume</u>					
Loblolly Pine	50.3	42.1	14.8	0.0	107.2
Virginia Pine	2.9	0.6	1.4	0.0	4.9
White Oak	5.9	33.4	15.0	0.0	54.3
Red Oak	7.4	37.2	9.3	0.0	53.9
Poplar	4.1	0.0	0.2	0.0	4.3
Maple	1.9	2.0	0.9	0.0	4.8
Hickory	0.5	0.2	0.4	0.0	1.1
Gum	9.9	1.2	3.4	0.0	14.5
Beech	0.7	0.7	0.4	0.0	1.8
	<hr/>	<hr/>	<hr/>	<hr/>	<hr/>
	83.6	117.4	45.8	0.0	246.8 MBF

\* Cords are standard cords of 128 cubic feet

\*\*MBF equals thousands of board feet, International 1/4" scale

## Cook Tract

### Timber Marketing & Management, Inc.

Professional Forestry Consultants

P.O. Box 396

Chesterfield, VA 23832-0000

Phone: (804) 796-9622 • Fax: (804) 796-9693

Pulpwood Cruise: 5.0%

Sawtimber Cruise: 100.0%

Cruise Date: Thursday, December 05, 2019

Owner's Name: Cook

County/State: Prince George County, VA

Acreage: 10+/-

Cruise Type: Tree Count

Harvest Type: Clear Cut

Total BF/Acre: 8,365

Pine Vol/Tree: 200.1

Hardwood Vol/Tree: 147.0

#### Volume Legend:

- 1) Diameters shown in inches (DBH)
- 2) Logs measured in 16' increments
- 3) Sawtimber volumes are shown in thousands of board feet (MBF)
- 4) Volume scale used for each species of sawtimber is noted
- 5) Pulpwood volumes are shown in standard cords (128 cubic feet)

#### Comments:

#### Pulpwood

Standard Cord

DBH	Wood Classification							
	Pine		Soft Hardwood		Hard Hardwood		Cedar	
# Trees	Volume	# Trees	Volume	# Trees	Volume	# Trees	Volume	
6	40	2	100	4	120	5		
8	60	6	160	13	220	17		
10	60	10	120	16	60	8		
14					20	5		
<b>Total</b>	<b>160</b>	<b>18</b>	<b>380</b>	<b>32</b>	<b>420</b>	<b>35</b>		

#### Beech - Sawtimber

International 1/4 Scale

DBH	Number of Logs					# Trees	Volume	% of Total
	1-Log	2-Log	3-Log	4-Log	5-Log			
12	1					1	0.1	7.5%
14	3					3	0.2	33.6%
16	1					1	0.1	15.1%
18	1					1	0.1	19.4%
20	1					1	0.2	24.4%
<b>Total</b>	<b>7</b>					<b>7</b>	<b>0.7</b>	

#### Gum - Sawtimber

International 1/4 Scale

DBH	Number of Logs					# Trees	Volume	% of Total
	1-Log	2-Log	3-Log	4-Log	5-Log			
12	20					20	1.1	11.3%
14	5	17	1			23	3.0	30.2%
16	3	5	4			12	2.3	23.3%
18		2	4			6	1.8	18.6%
20	1	1				2	0.5	5.0%
22		1				1	0.4	3.9%
26			1			1	0.8	7.7%
<b>Total</b>	<b>29</b>	<b>26</b>	<b>10</b>			<b>65</b>	<b>9.9</b>	

#### Hickory - Sawtimber

International 1/4 Scale

DBH	Number of Logs					# Trees	Volume	% of Total
	1-Log	2-Log	3-Log	4-Log	5-Log			
12	2					2	0.1	23.2%
16		1				1	0.2	39.3%
20	1					1	0.2	37.5%
<b>Total</b>	<b>3</b>	<b>1</b>				<b>4</b>	<b>0.5</b>	

#### Loblolly Pine - Sawtimber

International 1/4 Scale

DBH	Number of Logs					# Trees	Volume	% of Total
	1-Log	2-Log	3-Log	4-Log	5-Log			
10	24	2				26	1.0	2.0%
12	11	25	10			46	4.1	8.2%
14	7	16	32	1		56	9.0	17.9%
16	2	13	34	1		50	11.7	23.3%
18		7	16	2		25	7.9	15.7%
20			7	1		8	3.5	7.0%
22			7			7	3.7	7.3%
24			9			9	5.8	11.5%
26			3			3	2.3	4.6%
30				1		1	1.3	2.5%
<b>Total</b>	<b>44</b>	<b>63</b>	<b>118</b>	<b>6</b>		<b>231</b>	<b>50.3</b>	

#### Maple - Sawtimber

International 1/4 Scale

DBH	Number of Logs					# Trees	Volume	% of Total
	1-Log	2-Log	3-Log	4-Log	5-Log			
12	9					9	0.5	26.5%
14	3					3	0.2	13.1%
16	6	1				7	0.9	45.3%
18	2					2	0.3	15.1%
<b>Total</b>	<b>20</b>	<b>1</b>				<b>21</b>	<b>1.9</b>	

#### Poplar - Sawtimber

International 1/4 Scale

DBH	Number of Logs					# Trees	Volume	% of Total
	1-Log	2-Log	3-Log	4-Log	5-Log			
16	1	2	1			4	0.7	18.3%
18		2				2	0.5	12.1%
20		1	2			3	1.2	28.6%
22		1	1			2	0.9	22.4%
30		1				1	0.8	18.6%
<b>Total</b>	<b>1</b>	<b>7</b>	<b>4</b>			<b>12</b>	<b>4.1</b>	

## Cook Tract

### Timber Marketing & Management, Inc.

Cruise Date: Thursday, December 05, 2019  
 Owner's Name: Cook  
 County/State: Prince George County, VA

#### Red Oak - Sawtimber International 1/4 Scale

DBH	Number of Logs					# Trees	Volume	% of Total
	1-Log	2-Log	3-Log	4-Log	5-Log			
12	20					20	1.1	15.1%
14	21	4				25	2.3	31.1%
16	6	8				14	2.2	29.6%
18	2	3				5	1.0	13.9%
20	1	1				2	0.5	6.7%
24	1					1	0.3	3.6%
<b>Total</b>	<b>51</b>	<b>16</b>				<b>67</b>	<b>7.4</b>	

#### Virginia Pine - Sawtimber International 1/4 Scale

DBH	Number of Logs					# Trees	Volume	% of Total
	1-Log	2-Log	3-Log	4-Log	5-Log			
10	6	1				7	0.3	9.4%
12	9					9	0.5	17.2%
14	7	3				10	1.0	34.2%
16	6	1				7	0.9	29.4%
18	2					2	0.3	9.8%
<b>Total</b>	<b>30</b>	<b>5</b>				<b>35</b>	<b>2.9</b>	

#### White Oak - Sawtimber International 1/4 Scale

DBH	Number of Logs					# Trees	Volume	% of Total
	1-Log	2-Log	3-Log	4-Log	5-Log			
12	6					6	0.3	5.7%
14	5	1				6	0.6	9.4%
16	1	1				2	0.3	5.1%
18	4	3	1			8	1.7	28.1%
22	2	1				3	0.8	14.1%
24	1	1				2	0.7	12.5%
26	1					1	0.3	5.4%
28	2					2	0.7	12.5%
30	1					1	0.4	7.2%
<b>Total</b>	<b>23</b>	<b>7</b>	<b>1</b>			<b>31</b>	<b>5.9</b>	

#### Sawtimber Volume by Timber Type

Timber Type	# Trees	Volume	Avg BF/Tree	% of Total
Hardwood	207	30.4	147.0	36.4%
Pine	266	53.2	200.1	63.6%
<b>Total</b>	<b>473</b>	<b>83.7</b>	<b>176.8</b>	

#### Sawtimber Volume by DBH

DBH	# Trees	Volume	Avg BF/Tree	% of Total
10	33	1.3	38.1	1.5%
12	113	7.9	69.6	9.4%
14	126	16.4	129.9	19.6%
16	98	19.3	196.7	23.0%
18	51	13.7	267.8	16.3%
20	17	6.0	354.2	7.2%
22	13	5.8	448.2	7.0%
24	12	6.8	566.4	8.1%
26	5	3.4	676.6	4.0%
28	2	0.7	367.0	0.9%
30	3	2.5	818.0	2.9%
<b>Total</b>	<b>473</b>	<b>83.7</b>	<b>176.8</b>	

#### Sawtimber Volume by Species

Species	# Trees	Volume	Avg BF/Tree	% of Total
Beech	7	0.7	106.0	0.9%
Gum	65	9.9	152.6	11.9%
Hickory	4	0.5	120.8	0.6%
Loblolly Pine	231	50.3	217.7	60.1%
Maple	21	1.9	90.6	2.3%
Poplar	12	4.1	340.4	4.9%
Red Oak	67	7.4	110.6	8.9%
Virginia Pine	35	2.9	83.8	3.5%
White Oak	31	5.9	189.9	7.0%
<b>Total</b>	<b>473</b>	<b>83.7</b>	<b>176.8</b>	

**Lewis Tract**

**Timber Marketing & Management, Inc.**

Professional Forestry Consultants

P.O. Box 396

Chesterfield, VA 23832-0000

Phone: (804) 796-9622 • Fax: (804) 796-9693

Pulpwood Cruise: 5.0%

Sawtimber Cruise: 100.0%

Cruise Date: Monday, December 02, 2019

Owner's Name: Lewis

County/State: Prince George County, VA

Acreage: 18+/-

Cruise Type: Tree Count

Harvest Type: Clear Cut

Total BF/Acre: 6,517

Pine Vol/Tree: 199.4

Hardwood Vol/Tree: 149.0

**Volume Legend:**

- 1) Diameters shown in inches (DBH)
- 2) Logs measured in 16' increments
- 3) Sawtimber volumes are shown in thousands of board feet (MBF)
- 4) Volume scale used for each species of sawtimber is noted
- 5) Pulpwood volumes are shown in standard cords (128 cubic feet)

**Comments:**

**Pulpwood** Standard Cord

Wood Classification								
Pine			Soft Hardwood		Hard Hardwood		Cedar	
DBH	# Trees	Volume	# Trees	Volume	# Trees	Volume	# Trees	Volume
6		460	18	240	9			
8		260	21	160	13			
10		80	11	180	24			
12		20	4	120	24			
<b>Total</b>		<b>820</b>	<b>53</b>	<b>700</b>	<b>70</b>			

**Beech - Sawtimber** International 1/4 Scale

Number of Logs								
DBH	1-Log	2-Log	3-Log	4-Log	5-Log	# Trees	Volume	% of Total
20	1					1	0.2	27.1%
22	1					1	0.2	33.1%
24	1					1	0.3	39.8%
<b>Total</b>	<b>3</b>					<b>3</b>	<b>0.7</b>	

**Gum - Sawtimber** International 1/4 Scale

Number of Logs								
DBH	1-Log	2-Log	3-Log	4-Log	5-Log	# Trees	Volume	% of Total
12	2					2	0.1	9.3%
14	2					2	0.2	13.7%
16		3				3	0.6	47.1%
20	2					2	0.4	29.9%
<b>Total</b>	<b>6</b>	<b>3</b>				<b>9</b>	<b>1.2</b>	

**Hickory - Sawtimber** International 1/4 Scale

Number of Logs								
DBH	1-Log	2-Log	3-Log	4-Log	5-Log	# Trees	Volume	% of Total
20	1					1	0.2	100.0%
<b>Total</b>	<b>1</b>					<b>1</b>	<b>0.2</b>	

**Loblolly Pine - Sawtimber** International 1/4 Scale

Number of Logs								
DBH	1-Log	2-Log	3-Log	4-Log	5-Log	# Trees	Volume	% of Total
10	8	5				13	0.6	1.4%
12	8	27	9			44	4.0	9.5%
14	1	29	31			61	9.9	23.6%
16		10	37	1		48	11.7	27.7%
18		2	25	1		28	9.3	22.1%
20		1	8			9	3.7	8.9%
22			3			3	1.6	3.8%
24			2			2	1.3	3.1%
<b>Total</b>	<b>17</b>	<b>74</b>	<b>115</b>	<b>2</b>		<b>208</b>	<b>42.1</b>	

**Maple - Sawtimber** International 1/4 Scale

Number of Logs								
DBH	1-Log	2-Log	3-Log	4-Log	5-Log	# Trees	Volume	% of Total
12	8					8	0.4	22.8%
14	2					2	0.2	8.4%
16	6					6	0.7	34.2%
18	3	1				4	0.7	34.6%
<b>Total</b>	<b>19</b>	<b>1</b>				<b>20</b>	<b>2.0</b>	

**Red Oak - Sawtimber** International 1/4 Scale

Number of Logs								
DBH	1-Log	2-Log	3-Log	4-Log	5-Log	# Trees	Volume	% of Total
12	51					51	2.9	7.7%
14	46	47				93	10.4	28.1%
16	19	31	1			51	8.3	22.2%
18	7	16	2			25	5.6	15.2%
20	10	8	3			21	5.6	15.1%
22		4	2			6	2.6	7.0%
24		1	2			3	1.8	4.7%
<b>Total</b>	<b>133</b>	<b>107</b>	<b>10</b>			<b>250</b>	<b>37.2</b>	

**Virginia Pine - Sawtimber** International 1/4 Scale

Number of Logs								
DBH	1-Log	2-Log	3-Log	4-Log	5-Log	# Trees	Volume	% of Total
12	2					2	0.1	20.0%
14	1	1				2	0.2	40.0%
16	2					2	0.2	40.0%
<b>Total</b>	<b>5</b>	<b>1</b>				<b>6</b>	<b>0.6</b>	

## Lewis Tract

### Timber Marketing & Management, Inc.

Cruise Date: Monday, December 02, 2019  
 Owner's Name: Lewis  
 County/State: Prince George County, VA

#### White Oak - Sawtimber International 1/4 Scale

DBH	Number of Logs					# Trees	Volume	% of Total
	1-Log	2-Log	3-Log	4-Log	5-Log			
12	39					39	2.2	6.5%
14	48	30				78	8.2	24.6%
16	15	26	2			43	7.1	21.3%
18	11	18	1			30	6.4	19.1%
20	4	8				12	3.2	9.7%
22	3	8				11	3.8	11.2%
24		3				3	1.4	4.2%
26		2				2	1.1	3.3%
<b>Total</b>	<b>120</b>	<b>95</b>	<b>3</b>			<b>218</b>	<b>33.4</b>	

#### Sawtimber Volume by Timber Type

Timber Type	# Trees	Volume	Avg BF/Tree	% of Total
Hardwood	501	74.6	149.0	63.6%
Pine	214	42.7	199.4	36.4%
<b>Total</b>	<b>715</b>	<b>117.3</b>	<b>164.1</b>	

#### Sawtimber Volume by DBH

DBH	# Trees	Volume	Avg BF/Tree	% of Total
10	13	0.6	44.8	0.5%
12	146	9.7	66.6	8.3%
14	238	29.2	122.5	24.9%
16	153	28.5	186.6	24.3%
18	87	22.0	253.0	18.8%
20	46	13.3	289.0	11.3%
22	21	8.2	389.0	7.0%
24	9	4.7	524.2	4.0%
26	2	1.1	558.0	1.0%
<b>Total</b>	<b>715</b>	<b>117.3</b>	<b>164.1</b>	

#### Sawtimber Volume by Species

Species	# Trees	Volume	Avg BF/Tree	% of Total
Beech	3	0.7	222.7	0.6%
Gum	9	1.2	134.4	1.0%
Hickory	1	0.2	181.0	0.2%
Loblolly Pine	208	42.1	202.5	35.9%
Maple	20	2.0	98.3	1.7%
Red Oak	250	37.2	148.7	31.7%
Virginia Pine	6	0.6	93.3	0.5%
White Oak	218	33.4	153.4	28.5%
<b>Total</b>	<b>715</b>	<b>117.3</b>	<b>164.1</b>	

## Bland Tract

### Timber Marketing & Management, Inc.

Professional Forestry Consultants

P.O. Box 396

Chesterfield, VA 23832-0000

Phone: (804) 796-9622 • Fax: (804) 796-9693

Pulpwood Cruise: 5.0%

Sawtimber Cruise: 100.0%

Cruise Date: Monday, December 02, 2019  
 Owner's Name: Bland  
 County/State: Prince George County, VA  
 Acreage: 8+/-  
 Cruise Type: Tree Count  
 Harvest Type: Clear Cut  
 Total BF/Acre: 5,738  
 Pine Vol/Tree: 143.7  
 Hardwood Vol/Tree: 149.1

#### Volume Legend:

- 1) Diameters shown in inches (DBH)
- 2) Logs measured in 16' increments
- 3) Sawtimber volumes are shown in thousands of board feet (MBF)
- 4) Volume scale used for each species of sawtimber is noted
- 5) Pulpwood volumes are shown in standard cords (128 cubic feet)

#### Comments:

#### Pulpwood

Standard Cord

#### Wood Classification

DBH	Pine		Soft Hardwood		Hard Hardwood		Cedar	
	# Trees	Volume	# Trees	Volume	# Trees	Volume	# Trees	Volume
6	40	2	60	2	120	5		
8	40	4	80	6	140	11		
10			20	3	80	11		
12					40	8		
<b>Total</b>	<b>80</b>	<b>6</b>	<b>160</b>	<b>11</b>	<b>380</b>	<b>34</b>		

#### Beech - Sawtimber

International 1/4 Scale

#### Number of Logs

DBH	1-Log	2-Log	3-Log	4-Log	5-Log	# Trees	Volume	% of Total
16	2					2	0.2	55.3%
20	1					1	0.2	44.7%
<b>Total</b>	<b>3</b>					<b>3</b>	<b>0.4</b>	

#### Gum - Sawtimber

International 1/4 Scale

#### Number of Logs

DBH	1-Log	2-Log	3-Log	4-Log	5-Log	# Trees	Volume	% of Total
12	4					4	0.2	6.7%
14	1	1				2	0.2	6.7%
16	2	3	1			6	1.1	31.2%
18		1				1	0.2	7.4%
20		1				1	0.3	9.3%
22		2	1			3	1.3	38.7%
<b>Total</b>	<b>7</b>	<b>8</b>	<b>2</b>			<b>17</b>	<b>3.4</b>	

#### Hickory - Sawtimber

International 1/4 Scale

#### Number of Logs

DBH	1-Log	2-Log	3-Log	4-Log	5-Log	# Trees	Volume	% of Total
14	2					2	0.2	40.1%
18		1				1	0.2	59.9%
<b>Total</b>	<b>2</b>	<b>1</b>				<b>3</b>	<b>0.4</b>	

#### Loblolly Pine - Sawtimber

International 1/4 Scale

#### Number of Logs

DBH	1-Log	2-Log	3-Log	4-Log	5-Log	# Trees	Volume	% of Total
10	9	1				10	0.4	2.6%
12	12	16	3			31	2.5	16.9%
14	4	10	7			21	3.0	20.6%
16	4	7	11			22	4.6	31.0%
18		2	5			7	2.2	14.7%
20			3			3	1.3	8.7%
24	1					1	0.3	1.8%
26		1				1	0.6	3.8%
<b>Total</b>	<b>30</b>	<b>37</b>	<b>29</b>			<b>96</b>	<b>14.8</b>	

#### Maple - Sawtimber

International 1/4 Scale

#### Number of Logs

DBH	1-Log	2-Log	3-Log	4-Log	5-Log	# Trees	Volume	% of Total
14	2					2	0.2	17.7%
16	3	1				4	0.5	56.0%
18		1				1	0.2	26.4%
<b>Total</b>	<b>5</b>	<b>2</b>				<b>7</b>	<b>0.9</b>	

#### Poplar - Sawtimber

International 1/4 Scale

#### Number of Logs

DBH	1-Log	2-Log	3-Log	4-Log	5-Log	# Trees	Volume	% of Total
14	1					1	0.1	42.6%
16	1					1	0.1	57.4%
<b>Total</b>	<b>2</b>					<b>2</b>	<b>0.2</b>	

#### Red Oak - Sawtimber

International 1/4 Scale

#### Number of Logs

DBH	1-Log	2-Log	3-Log	4-Log	5-Log	# Trees	Volume	% of Total
12	18					18	1.0	10.8%
14	15	7				22	2.2	23.9%
16	5	11	1			17	2.9	31.1%
18	1	4				5	1.1	12.2%
20	1	3				4	1.1	12.0%
24		2				2	0.9	10.0%
<b>Total</b>	<b>40</b>	<b>27</b>	<b>1</b>			<b>68</b>	<b>9.3</b>	



## Bland Tract

### Timber Marketing & Management, Inc.

Cruise Date: Monday, December 02, 2019  
 Owner's Name: Bland  
 County/State: Prince George County, VA

#### Virginia Pine - Sawtimber International 1/4 Scale

DBH	Number of Logs					# Trees	Volume	% of Total
	1-Log	2-Log	3-Log	4-Log	5-Log			
10	4					4	0.1	10.1%
12	5					5	0.3	19.6%
14	4	3				7	0.8	52.9%
18		1				1	0.2	17.4%
<b>Total</b>	<b>13</b>	<b>4</b>				<b>17</b>	<b>1.4</b>	

#### White Oak - Sawtimber International 1/4 Scale

DBH	Number of Logs					# Trees	Volume	% of Total
	1-Log	2-Log	3-Log	4-Log	5-Log			
12	29					29	1.6	10.8%
14	17	10				27	2.8	18.8%
16	10	12				22	3.4	22.6%
18	5	5				10	2.0	13.1%
20	1	3	1			5	1.6	10.3%
22		1				1	0.4	2.6%
24		2				2	0.9	6.2%
26		1				1	0.6	3.7%
28		1				1	0.7	4.4%
36		1				1	1.1	7.5%
<b>Total</b>	<b>62</b>	<b>36</b>	<b>1</b>			<b>99</b>	<b>15.0</b>	

#### Sawtimber Volume by Timber Type

Timber Type	# Trees	Volume	Avg BF/Tree	% of Total
Hardwood	199	29.7	149.1	64.6%
Pine	113	16.2	143.7	35.4%
<b>Total</b>	<b>312</b>	<b>45.9</b>	<b>147.1</b>	

#### Sawtimber Volume by DBH

DBH	# Trees	Volume	Avg BF/Tree	% of Total
10	14	0.5	37.6	1.1%
12	87	5.6	64.8	12.3%
14	84	9.5	113.0	20.7%
16	74	12.8	173.1	27.9%
18	26	6.3	240.9	13.6%
20	14	4.4	317.8	9.7%
22	4	1.7	422.3	3.7%
24	5	2.1	428.4	4.7%
26	2	1.1	558.0	2.4%
28	1	0.7	654.0	1.4%
36	1	1.1	1,121.0	2.4%
<b>Total</b>	<b>312</b>	<b>45.9</b>	<b>147.1</b>	

#### Sawtimber Volume by Species

Species	# Trees	Volume	Avg BF/Tree	% of Total
Beech	3	0.4	135.0	0.9%
Gum	17	3.4	197.8	7.3%
Hickory	3	0.4	138.0	0.9%
Loblolly Pine	96	14.8	154.2	32.3%
Maple	7	0.9	134.3	2.0%
Poplar	2	0.2	97.5	0.4%
Red Oak	68	9.3	137.4	20.4%
Virginia Pine	17	1.4	83.9	3.1%
White Oak	99	15.0	151.6	32.7%
<b>Total</b>	<b>312</b>	<b>45.9</b>	<b>147.1</b>	

## Bland Tract Young Pine Block 2

### Timber Marketing & Management, Inc.

Professional Forestry Consultants

P.O. Box 396

Chesterfield, VA 23832-0000

Phone: (804) 796-9622 • Fax: (804) 796-9693

Pulpwood Cruise: 10.0%

Cruise Date:	Thursday, December 05, 2019
Owner's Name:	Bland
County/State:	Prince George County, VA
Acreage:	3+/-
Cruise Type:	Plot Cruise
Harvest Type:	Clear Cut

#### Volume Legend:

- 1) Diameters shown in inches (DBH)
- 2) Logs measured in 16' increments
- 3) Sawtimber volumes are shown in thousands of board feet (MBF)
- 4) Volume scale used for each species of sawtimber is noted
- 5) Pulpwood volumes are shown in standard cords (128 cubic feet)

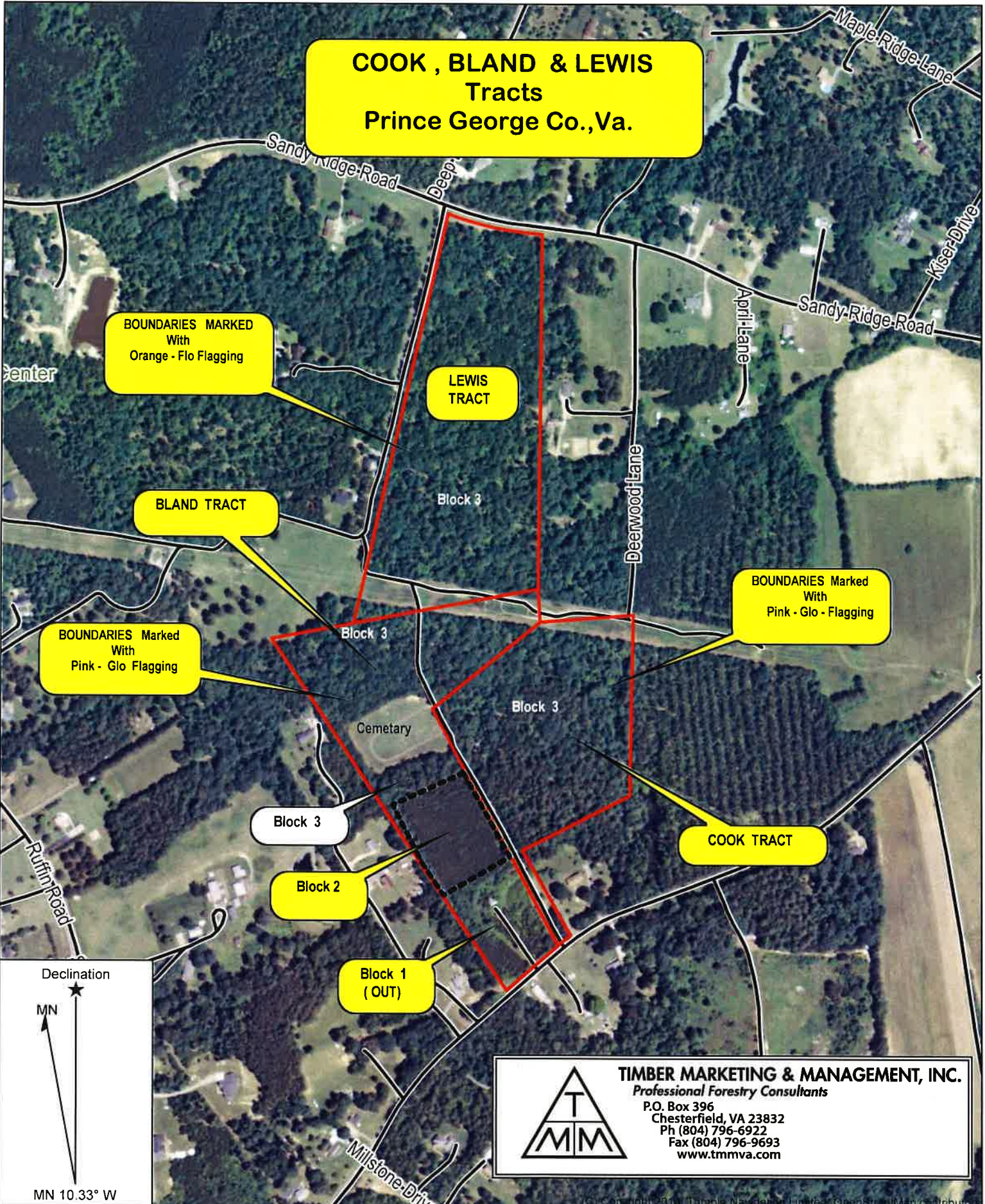
#### Comments:

<b>Pulpwood</b>	<b>Standard Cord</b>
-----------------	----------------------

		Wood Classification							
		Pine		Soft Hardwood		Hard Hardwood		Cedar	
DBH	# Trees	Volume	# Trees	Volume	# Trees	Volume	# Trees	Volume	
6	690	31							
8	450	45							
10	90	15							
Total	1,230	91							



**COOK , BLAND & LEWIS  
Tracts  
Prince George Co., Va.**



**BOUNDARIES MARKED With Orange - Flo Flagging**

**LEWIS TRACT**

**BLAND TRACT**

**BOUNDARIES Marked With Pink - Glo Flagging**

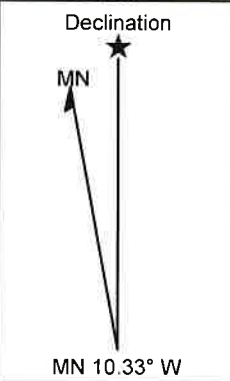
**BOUNDARIES Marked With Pink - Glo - Flagging**

**COOK TRACT**

**Block 3**

**Block 2**

**Block 1 (OUT)**



**TIMBER MARKETING & MANAGEMENT, INC.**  
Professional Forestry Consultants  
P.O. Box 396  
Chesterfield, VA 23832  
Ph (804) 796-6922  
Fax (804) 796-9693  
www.tmmva.com

Name: WESTOVER SW, VA  
Date: 12/10/19  
Scale: 1 inch = 500 ft.

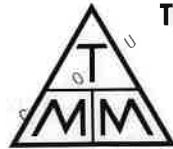
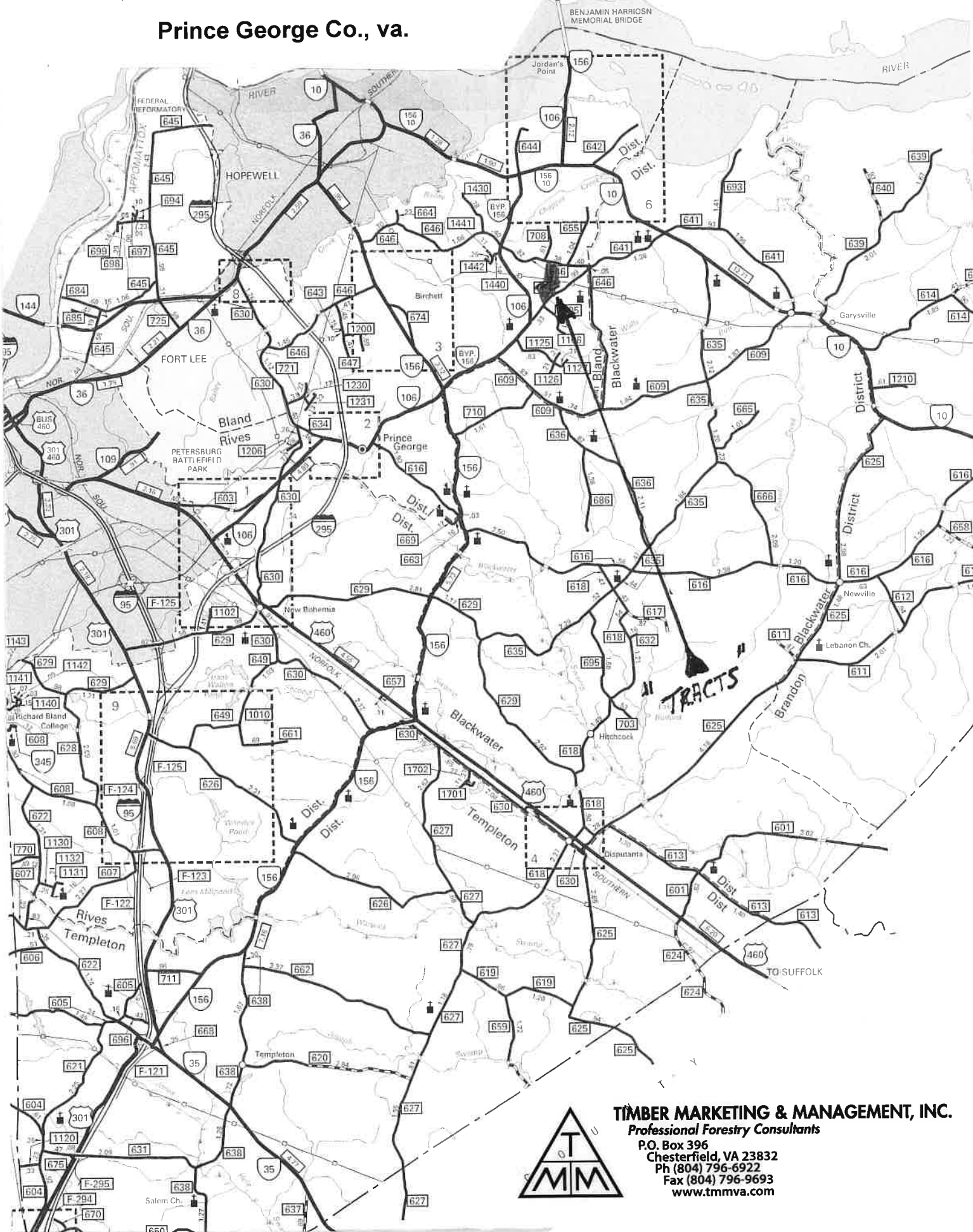
Location: 037° 15' 33.5108" N, 077° 13' 53.6778" W  
COOK, LEWIS & BLAND Tracts - Prince George Co., Va.



# COOK, LEWIS, & BLAND Et Als TRACTS

Prince George Co., va.

TO RTE. 5 C H A R L E S R I V E R



**TIMBER MARKETING & MANAGEMENT, INC.**  
Professional Forestry Consultants  
P.O. Box 396  
Chesterfield, VA 23832  
Ph (804) 796-6922  
Fax (804) 796-9693  
www.tmmva.com