

**TIMBER MARKETING & MANAGEMENT INC.**

*Professional Forestry Consultants*

P.O. Box 396

Chesterfield, VA 23832

Ph (804) 796-9622

Fax (804) 796-9693

www.tmmva.com

Sale Date:	<b>September 12, 2019</b>
Time:	11:00 a.m.
Day:	Thursday
Total Vol./Acre:	13,086 B. F.
Pine Vol/Tree:	138 B. F.
Hdwd. Vol/Tree:	158 B. F.

**CLEAR- CUT SALE**

Having been employed by **Ray Davis Holdings LLC** we solicit bids on all merchantable timber on **54 +/- acres** shown as the clear cut area and the blue marked trees on **2 +/- acres** shown as the SMZ's in **Gloucester** County, Virginia and as shown on the attached map.

We made a 4.5% plot cruise of the pulpwood trees to be harvested. Our estimate of their volume is:

<u>Pulpwood</u>	<u>Cords</u>	<u>Tons</u>
Pine	446	1,160
Soft Hardwood	89	231
Hard Hardwood	<u>84</u>	<u>218</u>
<b>Total:</b>	<b>619</b>	<b>1,609</b>

We have made a 100% count of the sawtimber-size trees to be harvested. Our estimate of their volume is:

Sawtimber

Loblolly Pine	554,800	Virginia Pine	2,700
Poplar	137,000	Maple	2,100
Red Oak	25,700	Gum	1,700
White oak	5,300	Beech	<u>900</u>
Hickory	2,700	<b>Total:</b>	<b>732,900 BF Int 1/4" Scale</b>

The above volumes are not guaranteed; however, care was taken in the field to assemble the above tables. You should note how your utilization practices may vary from the above and make any necessary adjustments.

Conditions

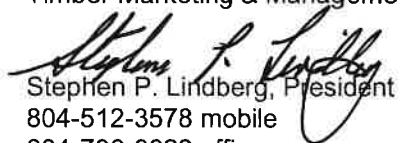
1. The landowner assumes responsibility for compliance with the Virginia State Seed Tree Law.
2. A period of time of 24 months will be allowed to cut and remove the timber.
3. Roads **must** be maintained and restored to their original condition upon the completion of logging. Any newly constructed roads and decks must be left in a graded condition upon the completion of logging that is in accordance with the guidelines set out in the **Best Management Practices Manual** of the Virginia Department of Forestry. Any newly constructed haul roads, skid roads and log decks and all logging operations must be in accordance with the guidelines set out in the **Best Management Practices Manual** of the Virginia Department of Forestry.
4. No tops or laps will be allowed to remain in the streams, buffers or over cutting boundaries. They must be pulled back into the clear cut sale area immediately.
5. Only the blue marked trees are to be cut from Streamside Management Zones.
6. No logging will be permitted during excessively wet weather conditions as determined by Timber Marketing & Management, Inc. If logging is halted due to weather conditions, then an extension of time equal to the time lost will be granted.
7. A \$2,500.00 performance bond will be paid at closing and held by Timber Marketing & Management, Inc. to insure compliance with all BMP requirements, road maintenance and conditions of the Timber Purchase Contract.

Only sealed bids will be accepted and owners reserve the right to reject any or all bids. BIDS SHOULD BE SUBMITTED PRIOR TO THE TIME OF BID OPENING AND CAN BE SUBMITTED VIA: Mail to: Timber Marketing & Management, Inc. P. O. Box 396, Chesterfield, Virginia 23832 **OR** hand delivered to 9520 Ironbridge Road, Chesterfield, Virginia **OR** telephoned in to 804-796-9622 **OR** faxed to 804-796-9693 **OR** emailed to tmm4u@aol.com Bids must be made on a lump-sum basis and must be received at this address no later than the posted bid date and time as shown on the cover. Closing shall take place within **15 days** of bid acceptance.

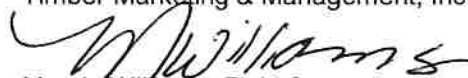
There will be no scheduled show trip of the tract; however, you may call and set an appointment or you may inspect the property at your own leisure.

An electronic copy of this sale notice, including maps and volumes, is available for download and viewing on our website at [www.tmmva.com](http://www.tmmva.com) under the Timber Sale Notices section.

Sincerely,  
Timber Marketing & Management, Inc.

  
Stephen P. Lindberg, President  
804-512-3578 mobile  
804-796-9622 office

Sincerely,  
Timber Marketing & Management, Inc.

  
Marvin Williams, Field Supervisor  
804-338-8458 mobile  
804-796-9622 office

## Enos Road Tract

### Timber Marketing & Management, Inc.

Professional Forestry Consultants

P.O. Box 396

Chesterfield, VA 23832-0000

Phone: (804) 796-9622 • Fax: (804) 796-9693

Pulpwood Cruise: 4.5%

Sawtimber Cruise: 100.0%

Cruise Date: Monday, July 22, 2019  
 Owner's Name: Ray Davis Holdings LLC  
 County/State: Gloucester County, VA  
 Acreage: 56+/-  
 Cruise Type: Plot Cruise  
 Harvest Type: Clear Cut  
 Total BF/Acre: 13,086  
 Pine Vol/Tree: 137.7  
 Hardwood Vol/Tree: 157.6

#### Volume Legend:

- 1) Diameters shown in inches (DBH)
- 2) Logs measured in 16' increments
- 3) Sawtimber volumes are shown in thousands of board feet (MBF)
- 4) Volume scale used for each species of sawtimber is noted
- 5) Pulpwood volumes are shown in standard cords (128 cubic feet)

#### Comments:

#### Pulpwood

Standard Cord

Wood Classification								
Pine			Soft Hardwood		Hard Hardwood		Cedar	
DBH	# Trees	Volume	# Trees	Volume	# Trees	Volume	# Trees	Volume
6	1,133	51	711	28	822	32		
8	1,978	198	378	30	244	19		
10	1,044	173	200	27	244	33		
12	89	23	22	4				
<b>Total</b>	<b>4,244</b>	<b>446</b>	<b>1,311</b>	<b>89</b>	<b>1,311</b>	<b>84</b>		

#### Beech - Sawtimber

International 1/4 Scale

Number of Logs								
DBH	1-Log	2-Log	3-Log	4-Log	5-Log	# Trees	Volume	% of Total
12	1					1	0.1	6.1%
14	2					2	0.2	18.1%
16	2					2	0.2	24.5%
18	2					2	0.3	31.5%
20	1					1	0.2	19.8%
<b>Total</b>	<b>8</b>					<b>8</b>	<b>0.9</b>	

#### Gum - Sawtimber

International 1/4 Scale

Number of Logs								
DBH	1-Log	2-Log	3-Log	4-Log	5-Log	# Trees	Volume	% of Total
12	4					4	0.2	13.5%
14	3	4				7	0.8	48.8%
16		2				2	0.4	22.8%
18		1				1	0.2	14.9%
<b>Total</b>	<b>7</b>	<b>7</b>				<b>14</b>	<b>1.7</b>	

#### Hickory - Sawtimber

International 1/4 Scale

Number of Logs								
DBH	1-Log	2-Log	3-Log	4-Log	5-Log	# Trees	Volume	% of Total
12	8					8	0.4	16.5%
14	3	8				11	1.4	50.6%
16		1				1	0.2	7.0%
18	1	1				2	0.4	14.4%
20		1				1	0.3	11.5%
<b>Total</b>	<b>12</b>	<b>11</b>				<b>23</b>	<b>2.7</b>	

#### Loblolly Pine - Sawtimber

International 1/4 Scale

Number of Logs								
DBH	1-Log	2-Log	3-Log	4-Log	5-Log	# Trees	Volume	% of Total
10	723	100				823	31.9	5.8%
12	104	349	1,108			1,561	170.9	30.8%
14	6	132	791	94		1,023	186.5	33.6%
16	2	33	383	55		473	121.3	21.9%
18		12	69	19		100	33.8	6.1%
20			5	10	2	17	6.9	1.2%
22				4		4	2.1	0.4%
26			1	1		2	1.3	0.2%
<b>Total</b>	<b>835</b>	<b>632</b>	<b>2,366</b>	<b>170</b>		<b>4,003</b>	<b>554.8</b>	

#### Maple - Sawtimber

International 1/4 Scale

Number of Logs								
DBH	1-Log	2-Log	3-Log	4-Log	5-Log	# Trees	Volume	% of Total
12	3					3	0.2	8.2%
14	1					1	0.1	4.0%
16	2	1				3	0.4	20.1%
18	2	1				3	0.5	26.1%
22		1				1	0.4	18.8%
24		1				1	0.5	22.8%
<b>Total</b>	<b>8</b>	<b>4</b>				<b>12</b>	<b>2.1</b>	

#### Poplar - Sawtimber

International 1/4 Scale

Number of Logs								
DBH	1-Log	2-Log	3-Log	4-Log	5-Log	# Trees	Volume	% of Total
12	221	10				231	13.3	9.7%
14	34	205	20			259	35.4	25.9%
16	8	90	99	1		198	43.6	31.9%
18	1	23	52	1		77	23.7	17.3%
20		13	18			31	11.8	8.6%
22		9	8			17	7.7	5.6%
24			1			1	0.6	0.5%
26			1			1	0.8	0.6%
<b>Total</b>	<b>264</b>	<b>350</b>	<b>199</b>	<b>2</b>		<b>815</b>	<b>137.0</b>	

## Enos Road Tract

### Timber Marketing & Management, Inc.

Cruise Date: Monday, July 22, 2019  
 Owner's Name: Ray Davis Holdings LLC  
 County/State: Gloucester County, VA

#### Red Oak - Sawtimber International 1/4 Scale

DBH	Number of Logs					# Trees	Volume	% of Total
	1-Log	2-Log	3-Log	4-Log	5-Log			
12	99					99	5.5	21.6%
14	25	20				45	4.9	19.1%
16	8	23	3			34	6.0	23.5%
18	2	10	1			13	3.1	12.1%
20	1	5				6	1.8	6.8%
22	2	3				5	1.6	6.2%
24		3				3	1.4	5.5%
26		1	1			2	1.3	5.2%
<b>Total</b>	<b>137</b>	<b>65</b>	<b>5</b>			<b>207</b>	<b>25.7</b>	

#### Virginia Pine - Sawtimber International 1/4 Scale

DBH	Number of Logs					# Trees	Volume	% of Total
	1-Log	2-Log	3-Log	4-Log	5-Log			
10	18					18	0.6	23.7%
12	16	2	1			19	1.2	43.9%
14	4	1				5	0.5	17.3%
16	2	1				3	0.4	15.1%
<b>Total</b>	<b>40</b>	<b>4</b>	<b>1</b>			<b>45</b>	<b>2.7</b>	

#### White Oak - Sawtimber International 1/4 Scale

DBH	Number of Logs					# Trees	Volume	% of Total
	1-Log	2-Log	3-Log	4-Log	5-Log			
12	12					12	0.7	12.8%
14	5	1				6	0.6	10.6%
16	3	4				7	1.1	20.8%
18		4				4	1.0	18.9%
20		2				2	0.6	11.9%
26		1				1	0.6	10.6%
30		1				1	0.8	14.4%
<b>Total</b>	<b>20</b>	<b>13</b>				<b>33</b>	<b>5.3</b>	

#### Sawtimber Volume by Timber Type

Timber Type	# Trees	Volume	Avg BF/Tree	% of Total
Hardwood	1,112	175.3	157.6	23.9%
Pine	4,048	557.5	137.7	76.1%
<b>Total</b>	<b>5,160</b>	<b>732.8</b>	<b>142.0</b>	

#### Sawtimber Volume by DBH

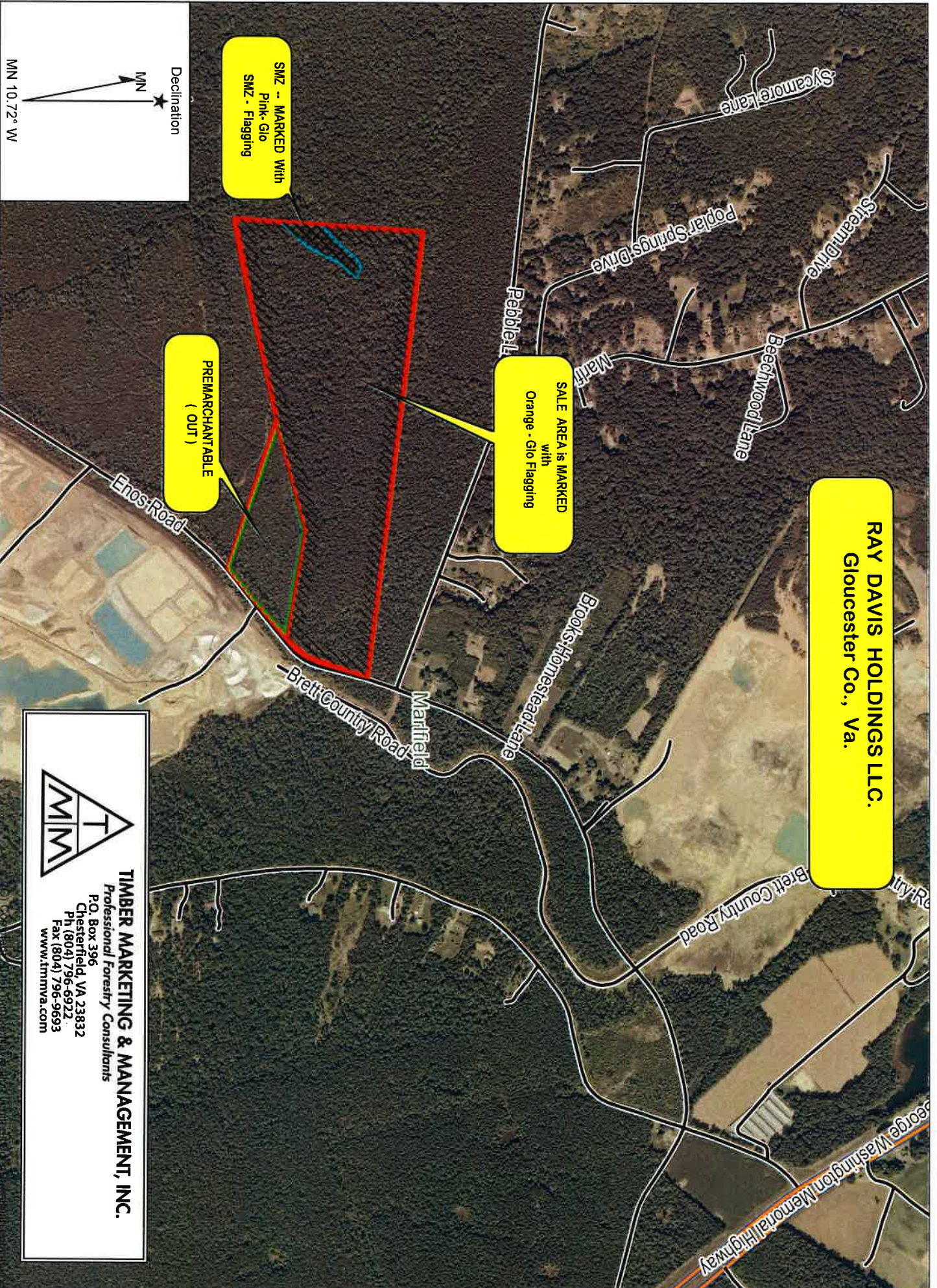
DBH	# Trees	Volume	Avg BF/Tree	% of Total
10	841	32.6	38.7	4.4%
12	1,938	192.5	99.3	26.3%
14	1,359	230.4	169.5	31.4%
16	723	173.7	240.3	23.7%
18	202	63.1	312.3	8.6%
20	58	21.5	370.8	2.9%
22	27	11.8	437.4	1.6%
24	5	2.5	504.0	0.3%
26	6	4.0	662.5	0.5%
30	1	0.8	758.0	0.1%
<b>Total</b>	<b>5,160</b>	<b>732.8</b>	<b>142.0</b>	

#### Sawtimber Volume by Species

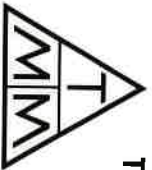
Species	# Trees	Volume	Avg BF/Tree	% of Total
Beech	8	0.9	114.4	0.1%
Gum	14	1.7	118.9	0.2%
Hickory	23	2.7	118.3	0.4%
Loblolly Pine	4,003	554.8	138.6	75.7%
Maple	12	2.1	171.4	0.3%
Poplar	815	137.0	168.1	18.7%
Red Oak	207	25.7	124.0	3.5%
Virginia Pine	45	2.7	60.8	0.4%
White Oak	33	5.3	159.4	0.7%
<b>Total</b>	<b>5,160</b>	<b>732.8</b>	<b>142.0</b>	



**RAY DAVIS HOLDINGS LLC.**  
Gloucester Co., Va.



Name: GLOUCESTER NW, VA  
Date: 08/19/19  
Scale: 1 inch = 833 ft.

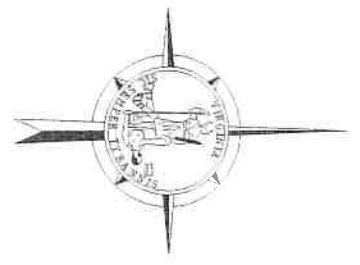


**TIMBER MARKETING & MANAGEMENT, INC.**  
Professional Forestry Consultants  
P.O. Box 396  
Chesterfield, VA 23832  
Ph (804) 796-6922  
Fax (804) 796-9693  
www.tmmva.com

Location: 037° 26' 54.0770" N, 076° 36' 39.5431" W  
RAY DAVIS HOLDINGS LLC - Gloucester Co., Va.  
(c) Copyright 2016, Trimble Navigation Limited

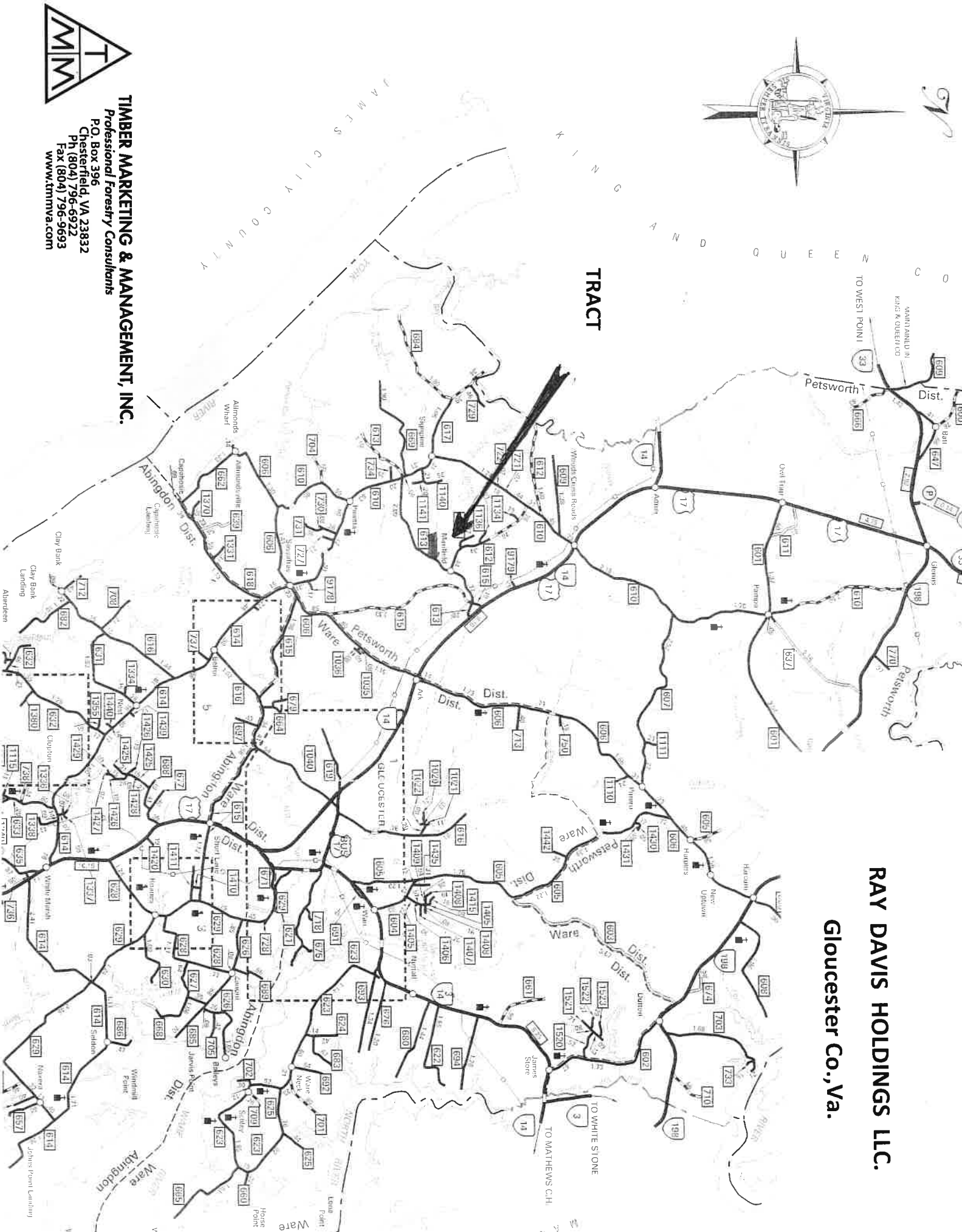


gr



# RAY DAVIS HOLDINGS LLC. Gloucester Co., Va.

## TRACT



## TIMBER MARKETING & MANAGEMENT, INC. Professional Forestry Consultants

P.O. Box 396  
Chesterfield VA 23832  
Ph (804) 796-6922  
Fax (804) 796-9693  
www.ttmva.com

