

TIMBER MARKETING & MANAGEMENT, INC.
Professional Forestry Consultants

P.O. Box 396
Chesterfield, VA 23832
Ph (804) 796-9622
Fax (804) 796-9693

Sale Date:	5/10/2018	5/10/2018
Time:	11:00 a.m.	11:00 a.m.
Day:	Thursday	Thursday
Block:	Block A	Block B
Total Vol./Acre:	12,471 B. F.	2,714 B. F.
Pine Vol/Tree:	200 B. F.	244 B. F.
Hdwd. Vol/Tree:	230 B. F.	469 B. F.

**CLEAR CUT & SELECT CUT SALE
EXCELLENT QUALITY HARDWOOD**

Having been employed by **RIVERSOL LLC**, we solicit bids on all merchantable timber on Block A being 83 +/- acres and red marked timber only on Block B being 54 +/- acres in Chesterfield County Virginia as shown on the attached map.

We have cruised the pulpwood trees (4% plot cruise) to be harvested. Our estimate of their volume is:

<u>Pulpwood</u>	<u>Block A</u>	<u>Block B</u>	<u>Total</u>
Soft Hardwood	285	0	285
Hard Hardwood	320	0	<u>320</u>
			605 Total Standard Cords

We have made a 100% tree count of the sawtimber-size trees. Our estimate of their volume is:

<u>Sawtimber</u>	<u>Block A</u>	<u>Block B</u>	<u>TOTAL</u>
Ash	3,500	3,200	6,700
Cedar	600	0	600
Gum	32,200	3,300	35,500
Hickory	58,500	7,500	66,000
Loblolly Pine	16,800	4,100	20,900
Maple	2,100	300	2,400
Misc. Hardwood	3,800	0	3,800
Northern Red Oak	45,200	19,300	64,500
Poplar	357,900	74,300	432,200
Red Oak	133,200	20,200	153,400
Walnut	800	1,400	2,200
White Oak	<u>380,600</u>	<u>13,000</u>	<u>393,600</u>
	1,035,200	146,600	1,181,800

The above volumes are not guaranteed; however, care was taken in the field to assemble the above tables. You should note how your utilization practices may vary from the above and make any necessary adjustments.

VENEER

Included in the volumes are high quality trees that, from our review, will be of high enough quality that a veneer cut can be obtained. The veneer volume in Block A is estimated to be:

White Oak 4,181 BF Doyle Scale

We have enclosed a detailed analysis of the veneer logs for your review. Please note that the veneer volumes are an aid and you should review the trees and make your own adjustments as you see necessary. The veneer trees have been individually numbered and painted with a ring of red paint around the entire tree.


CONDITIONS

1. The paved driveway from River Road (16521 River Road) may be used for viewing access only. The paved driveway is NOT to be used for logging access nor can it be crossed with skidders.
2. Logging access will be from Eppes Falls Road through the Chesterfield Land Trust property. The access road is marked with timber sale signs and blue flagging.
3. A period of time of 18 months will be allowed to cut and remove the timber.
4. A road may be used across or around the field on the property to access the east side of the property. The field must be graded, seeded and returned to original condition upon completion of logging.
5. The area north of the creek may be accessed by timber bridges from south of the creek.
6. The clear cut area (Block A) has the timber marked in blue. The select cut area (Block B) has the timber marked in red.
7. Roads **must** be maintained and restored to their original condition upon completion of the logging. Any newly constructed roads and decks must be left in a graded condition and must be seeded upon completion of logging. Any newly constructed and existing haul roads, skid roads and log decks and all logging operations must be in accordance with the guidelines set out in the **Best Management Practices Manual** of the Virginia Department of Forestry.
8. No tops or laps will be allowed to remain in the streams, fields, buffers or over cutting boundaries. They must be pulled back immediately.
9. Only the blue marked trees are to be cut from Streamside Management Zones.
10. Only the red marked trees are to be cut from the select cut area, Block B.
11. Trees must be topped and limbed before skidding in the select cut area.
12. No logging will be permitted during excessively wet weather conditions as determined by Timber Marketing & Management, Inc. If logging is halted due to weather conditions, then an extension of time equal to the time lost will be granted.
13. A \$4,000.00 performance bond will be paid at closing and held by Timber Marketing & Management, Inc. to insure compliance with all BMP requirements, road maintenance and conditions of the Timber Purchase Contract.

Only sealed bids will be accepted and owners reserve the right to reject any or all bids. BIDS SHOULD BE SUBMITTED PRIOR TO THE TIME OF BID OPENING AND CAN BE SUBMITTED VIA: Mail to Timber Marketing & Management, Inc. P. O. Box 396, Chesterfield, Virginia 23832 **OR** hand delivered to 9520 Ironbridge Road, Chesterfield, Virginia **OR** telephoned in to 804-796-9622 **OR** faxed to 804-796-9693 **OR** emailed to tmm4u@aol.com Bids will be accepted on a combination of Blocks A and B only and must be made on a lump-sum basis and must be received at this address no later than the posted sale date and time as shown on the cover.

There are no scheduled show trips for the tract. However, you may call and set an appointment or you may inspect the property at your own leisure.

Sincerely,
Timber Marketing & Management, Inc.


Gregory C. Garrison, Vice President
804-338-7851 Mobile
804-796-9622 Office

Riversol Block A

Timber Marketing & Management, Inc.

Professional Forestry Consultants

P.O. Box 396

Chesterfield, VA 23832-0000

Phone: (804) 796-9622 • Fax: (804) 796-9693

Pulpwood Cruise: 4.0%
 Sawtimber Cruise: 100.0%
 Veneer Cruise: 100.0%

Cruise Date: Friday, March 16, 2018
 Owner's Name: Riversol
 County/State: Chesterfield County, VA
 Acreage: 83+/-
 Cruise Type: Tree Count
 Harvest Type: Clear Cut
 Total BF/Acre: 12,471
 Pine Vol/Tree: 199.6
 Hardwood Vol/Tree: 230.3

Volume Legend:

- 1) Diameters shown in inches (DBH)
- 2) Logs measured in 16' increments
- 3) Sawtimber volumes are shown in thousands of board feet (MBF)
- 4) Volume scale used for each species of sawtimber is noted
- 5) Pulpwood volumes are shown in standard cords (128 cubic feet)

Comments:

Pulpwood

Standard Cord

DBH	Wood Classification							
	Pine		Soft Hardwood		Hard Hardwood		Cedar	
# Trees	Volume	# Trees	Volume	# Trees	Volume	# Trees	Volume	
6		1,325	52	1,050	41			
8		900	71	1,075	85			
10		825	110	875	116			
12		200	40	325	64			
14		50	13	50	13			
Total		3,300	285	3,375	320			

Ash - Sawtimber

International 1/4 Scale

DBH	Number of Logs					# Trees	Volume	% of Total
	1-Log	2-Log	3-Log	4-Log	5-Log			
12	2					2	0.1	3.2%
14	6	2				8	0.8	22.5%
16	2	3				5	0.8	22.9%
18	2	4				6	1.3	37.0%
20	1	1				2	0.5	14.3%
Total	13	10				23	3.5	

Cedar - Sawtimber

International 1/4 Scale

DBH	Number of Logs					# Trees	Volume	% of Total
	1-Log	2-Log	3-Log	4-Log	5-Log			
12	2					2	0.1	18.9%
14	1	1				2	0.2	37.8%
16	1					1	0.1	18.9%
18	1					1	0.1	24.3%
Total	5	1				6	0.6	

Gum - Sawtimber

International 1/4 Scale

DBH	Number of Logs					# Trees	Volume	% of Total
	1-Log	2-Log	3-Log	4-Log	5-Log			
12	82					82	4.6	14.3%
14	25	63	2			90	11.3	35.2%
16	4	17	12			33	6.8	21.0%
18	2	9	10			21	5.9	18.3%
20	1		4			5	1.9	5.9%
22			1			1	0.5	1.6%
24		1				1	0.5	1.5%
26			1			1	0.8	2.4%
Total	114	90	30			234	32.2	

Hickory - Sawtimber

International 1/4 Scale

DBH	Number of Logs					# Trees	Volume	% of Total
	1-Log	2-Log	3-Log	4-Log	5-Log			
12	80					80	4.5	7.7%
14	32	86				118	14.8	25.3%
16	9	66	18			93	18.2	31.0%
18	5	27	21			53	14.5	24.7%
20	1	7	3			11	3.7	6.3%
22		4				4	1.5	2.6%
24			1			1	0.6	1.1%
26			1			1	0.8	1.3%
Total	127	190	44			361	58.5	

Loblolly Pine - Sawtimber

International 1/4 Scale

DBH	Number of Logs					# Trees	Volume	% of Total
	1-Log	2-Log	3-Log	4-Log	5-Log			
10	8	4				12	0.5	3.1%
12	2	7	11			20	2.1	12.4%
14	1	4	10	1		16	2.7	16.2%
16		1	9	3		13	3.4	20.3%
18			9	5		14	5.0	30.0%
20			1	4		5	2.5	14.8%
22			1			1	0.5	3.1%
Total	11	16	41	13		81	16.8	

Riversol Block A

Timber Marketing & Management, Inc.

Cruise Date: Friday, March 16, 2018
 Owner's Name: Riversol
 County/State: Chesterfield County, VA

Maple - Sawtimber International 1/4 Scale

DBH	Number of Logs					# Trees	Volume	% of Total
	1-Log	2-Log	3-Log	4-Log	5-Log			
12	10					10	0.6	26.1%
14	5					5	0.4	19.3%
16	5					5	0.6	26.1%
18	3					3	0.4	20.1%
20	1					1	0.2	8.4%
Total	24					24	2.1	

Miscellaneous Hardwood - Sawtimber International 1/4 Scale

DBH	Number of Logs					# Trees	Volume	% of Total
	1-Log	2-Log	3-Log	4-Log	5-Log			
12	5					5	0.3	7.4%
14	7					7	0.6	15.4%
16	6	3				9	1.2	32.8%
18	6	1				7	1.1	29.4%
20	1					1	0.2	4.8%
22		1				1	0.4	10.2%
Total	25	5				30	3.8	

Northern Red Oak - Sawtimber International 1/4 Scale

DBH	Number of Logs					# Trees	Volume	% of Total
	1-Log	2-Log	3-Log	4-Log	5-Log			
12	7					7	0.4	0.9%
14	7	9				16	1.9	4.1%
16	7	12	1			20	3.3	7.4%
18	2	18	3			23	5.8	12.8%
20	2	19	7			28	9.3	20.6%
22		15	5			20	8.4	18.7%
24		4	4			8	4.5	9.9%
26		5	5			10	6.6	14.7%
28		3				3	2.0	4.3%
30		4				4	3.0	6.7%
Total	25	89	25			139	45.2	

Poplar - Sawtimber International 1/4 Scale

DBH	Number of Logs					# Trees	Volume	% of Total
	1-Log	2-Log	3-Log	4-Log	5-Log			
12	207					207	11.6	3.2%
14	43	229	42			314	43.7	12.2%
16	15	101	189	7		312	71.4	19.9%
18	6	58	141	33		238	75.9	21.2%
20	3	19	102	25		149	62.9	17.6%
22		23	44	9		76	37.9	10.6%
24		8	36	5		49	30.8	8.6%
26	1	3	14	4		22	16.5	4.6%
28	1		4	1		6	5.1	1.4%
30			1	1		2	2.3	0.6%
Total	276	441	573	85		1,375	357.9	

Red Oak - Sawtimber International 1/4 Scale

DBH	Number of Logs					# Trees	Volume	% of Total
	1-Log	2-Log	3-Log	4-Log	5-Log			
12	49					49	2.7	2.1%
14	39	43				82	9.3	7.0%
16	26	62	8			96	16.7	12.6%
18	8	69	16			93	23.6	17.8%
20	5	50	24			79	26.9	20.2%
22		29	19			48	21.3	16.0%
24	2	12	15			29	15.8	11.9%
26	2	2	10			14	9.4	7.1%
28		7	1			8	5.5	4.1%
30			1			1	1.1	0.8%
32		1				1	0.9	0.7%
Total	131	275	94			500	133.2	

Walnut - Sawtimber International 1/4 Scale

DBH	Number of Logs					# Trees	Volume	% of Total
	1-Log	2-Log	3-Log	4-Log	5-Log			
12	3					3	0.2	21.6%
14	3					3	0.2	32.0%
16	1					1	0.1	14.4%
18		1				1	0.2	31.9%
Total	7	1				8	0.8	

Riversol Block A

Timber Marketing & Management, Inc.

Cruise Date: Friday, March 16, 2018
 Owner's Name: Riversol
 County/State: Chesterfield County, VA

White Oak - Sawtimber International 1/4 Scale

DBH	Number of Logs					# Trees	Volume	% of Total
	1-Log	2-Log	3-Log	4-Log	5-Log			
12	235					235	13.2	3.5%
14	108	267	2			377	47.0	12.3%
16	27	284	53			364	70.6	18.5%
18	22	244	121			387	104.3	27.4%
20	12	132	85			229	79.9	21.0%
22	4	54	25			83	35.0	9.2%
24		16	13			29	15.9	4.2%
26	1	6	5			12	7.5	2.0%
28		4	1			5	3.5	0.9%
30		1	1			2	1.8	0.5%
34		2				2	2.0	0.5%
Total	409	1,010	306			1,725	380.6	

Sawtimber Volume by Timber Type

Timber Type	# Trees	Volume	Avg BF/Tree	% of Total
Hardwood	4,419	1,017.7	230.3	98.3%
Pine	87	17.4	199.6	1.7%
Total	4,506	1,035.1	229.7	

Sawtimber Volume by DBH

DBH	# Trees	Volume	Avg BF/Tree	% of Total
10	12	0.5	43.7	0.1%
12	702	40.3	57.4	3.9%
14	1,038	132.9	128.0	12.8%
16	952	193.1	202.9	18.7%
18	847	238.2	281.3	23.0%
20	510	187.8	368.3	18.1%
22	234	105.5	451.1	10.2%
24	117	68.1	581.7	6.6%
26	60	41.5	692.1	4.0%
28	22	16.0	729.2	1.5%
30	9	8.2	912.4	0.8%
32	1	0.9	870.0	0.1%
34	2	2.0	989.0	0.2%
Total	4,506	1,035.1	229.7	

Sawtimber Volume by Species

Species	# Trees	Volume	Avg BF/Tree	% of Total
Ash	23	3.5	150.5	0.3%
Cedar	6	0.6	98.7	0.1%
Gum	234	32.2	137.6	3.1%
Hickory	361	58.5	162.1	5.7%
Loblolly Pine	81	16.8	207.0	1.6%
Maple	24	2.1	89.5	0.2%
Miscellaneous Hardwood	30	3.8	126.1	0.4%
Northern Red Oak	139	45.2	324.9	4.4%
Poplar	1,375	357.9	260.3	34.6%
Red Oak	500	133.2	266.3	12.9%
Walnut	8	0.8	97.1	0.1%
White Oak	1,725	380.6	220.6	36.8%
Total	4,506	1,035.1	229.7	

Riversol Block A

Timber Marketing & Management, Inc.

Cruise Date: Friday, March 16, 2018
 Owner's Name: Riversol
 County/State: Chesterfield County, VA

White Oak - Veneer Doyle (Butt Log Scale)

DBH	Butt Log Length									# Logs	Volume	% of Total
	8'	10'	12'	14'	16'	18'	20'	22'	24'			
18	1	1	6		3					11	848	20.3%
20	1	4	9		2					16	1,723	41.2%
22		2	1		1					4	557	13.3%
24	2	1	1		1					5	848	20.3%
26		1								1	205	4.9%
Total	4	9	17		7					37	4,181	

Veneer Volume by DBH

DBH	# Trees	Volume	Avg BF/Log	% of Total
18	11	848	77.1	20.3%
20	16	1,723	107.7	41.2%
22	4	557	139.3	13.3%
24	5	848	169.6	20.3%
26	1	205	205.0	4.9%
Total	37	4,181	113.0	

Veneer Tag List

Tag	Species	DBH	Butt Log Length
A1	White Oak	20	12'
A10	White Oak	20	10'
A11	White Oak	18	12'
A12	White Oak	20	12'
A13	White Oak	22	10'
A14	White Oak	18	16'
A15	White Oak	22	12'
A17	White Oak	24	16'
A18	White Oak	20	12'
A2	White Oak	20	16'
A3	White Oak	20	16'
A4	White Oak	20	12'
A5	White Oak	20	12'
A6	White Oak	18	12'
A7	White Oak	18	16'
A8	White Oak	18	12'
A9	White Oak	22	16'
G1	White Oak	24	12'
G2	White Oak	24	8'
G3	White Oak	26	10'
G4	White Oak	20	12'
G5	White Oak	22	10'
M1	White Oak	18	12'
M2	White Oak	18	16'
M3	White Oak	20	10'
M4	White Oak	20	8'
M5	White Oak	18	10'
M6	White Oak	20	12'
M7	White Oak	24	8'
M8	White Oak	24	10'
S1	White Oak	18	12'
S2	White Oak	20	12'
S3	White Oak	20	10'
S4	White Oak	20	10'
S5	White Oak	20	12'
S6	White Oak	18	12'
S6A	White Oak	18	8'
S7	White Oak	20	12'

Veneer Volume by Species

Species	# Trees	Volume	Avg BF/Log	% of Total
White Oak	37	4,181	113.0	100.0%
Total	37	4,181	113.0	

Riversol Block B

Timber Marketing & Management, Inc.

Professional Forestry Consultants

P.O. Box 396

Chesterfield, VA 23832-0000

Phone: (804) 796-9622 • Fax: (804) 796-9693

Sawtimber Cruise: 100.0%

Cruise Date:

Owner's Name:

Riversol

County/State:

Chesterfield County, VA

Acreage:

54+/-

Cruise Type:

Tree Count

Harvest Type:

Select Cut

Total BF/Acre:

2,714

Pine Vol/Tree:

243.5

Hardwood Vol/Tree:

468.5

Volume Legend:

- 1) Diameters shown in inches (DBH)
- 2) Logs measured in 16' increments
- 3) Sawtimber volumes are shown in thousands of board feet (MBF)
- 4) Volume scale used for each species of sawtimber is noted
- 5) Pulpwood volumes are shown in standard cords (128 cubic feet)

Comments:

Ash - Sawtimber

International 1/4 Scale

Number of Logs								
DBH	1-Log	2-Log	3-Log	4-Log	5-Log	# Trees	Volume	% of Total
16	1					1	0.1	3.5%
18		1				1	0.2	7.8%
20		2				2	0.6	19.6%
22		2	1			3	1.3	40.7%
24	1		1			2	0.9	28.4%
Total	2	5	2			9	3.2	

Gum - Sawtimber

International 1/4 Scale

Number of Logs								
DBH	1-Log	2-Log	3-Log	4-Log	5-Log	# Trees	Volume	% of Total
16		1				1	0.2	5.8%
18		2	2			4	1.2	35.7%
20		1	1			2	0.7	22.7%
22			1			1	0.5	16.1%
24			1			1	0.6	19.7%
Total		4	5			9	3.3	

Hickory - Sawtimber

International 1/4 Scale

Number of Logs								
DBH	1-Log	2-Log	3-Log	4-Log	5-Log	# Trees	Volume	% of Total
16		1				1	0.2	2.5%
18		2				2	0.5	6.6%
20		5	3			8	2.9	38.2%
22		3	1			4	1.7	22.6%
24		2	1			3	1.6	21.2%
28		1				1	0.7	8.8%
Total		14	5			19	7.5	

Loblolly Pine - Sawtimber

International 1/4 Scale

Number of Logs								
DBH	1-Log	2-Log	3-Log	4-Log	5-Log	# Trees	Volume	% of Total
12	2	1				3	0.2	4.9%
14			5			5	0.9	22.5%
16			1	3		4	1.2	28.3%
18		1	2	1		4	1.3	31.9%
20				1		1	0.5	12.4%
Total	2	2	8	5		17	4.1	

Maple - Sawtimber

International 1/4 Scale

Number of Logs								
DBH	1-Log	2-Log	3-Log	4-Log	5-Log	# Trees	Volume	% of Total
20		1				1	0.3	100.0%
Total		1				1	0.3	

Northern Red Oak - Sawtimber

International 1/4 Scale

Number of Logs								
DBH	1-Log	2-Log	3-Log	4-Log	5-Log	# Trees	Volume	% of Total
18		2				2	0.5	2.6%
20	1	5	1			7	2.2	11.3%
22	1	13	1			15	5.8	30.0%
24	2	5	1			8	3.5	18.2%
26		5	1			6	3.6	18.4%
28			1			1	0.9	4.7%
30		1	2			3	2.9	14.8%
Total	4	31	7			42	19.3	

Poplar - Sawtimber

International 1/4 Scale

Number of Logs								
DBH	1-Log	2-Log	3-Log	4-Log	5-Log	# Trees	Volume	% of Total
16			3			3	0.8	1.0%
18		9	13	1		23	7.0	9.4%
20		8	26	16		50	21.8	29.3%
22		5	27	5		37	19.4	26.1%
24			15	4		19	12.8	17.2%
26		1	12			13	9.8	13.1%
28			2			2	1.8	2.4%
30			1			1	1.1	1.4%
Total		23	99	26		148	74.3	

Riversol Block B

Timber Marketing & Management, Inc.

Cruise Date:
 Owner's Name: Riversol
 County/State: Chesterfield County, VA

Red Oak - Sawtimber International 1/4 Scale

DBH	Number of Logs					# Trees	Volume	% of Total
	1-Log	2-Log	3-Log	4-Log	5-Log			
18		6	1			7	1.8	9.0%
20	1	5				6	1.8	8.7%
22		13	3			16	6.6	32.8%
24		2	2			4	2.2	11.0%
26		2	1			3	1.9	9.3%
28		1	1			2	1.6	7.7%
30		1	1			2	1.8	9.0%
34			1			1	1.4	6.9%
36		1				1	1.1	5.6%
Total	1	31	10			42	20.2	

Walnut - Sawtimber International 1/4 Scale

DBH	Number of Logs					# Trees	Volume	% of Total
	1-Log	2-Log	3-Log	4-Log	5-Log			
18	1					1	0.1	10.2%
20		2				2	0.6	44.4%
24			1			1	0.6	45.5%
Total	1	2	1			4	1.4	

White Oak - Sawtimber International 1/4 Scale

DBH	Number of Logs					# Trees	Volume	% of Total
	1-Log	2-Log	3-Log	4-Log	5-Log			
18		2				2	0.5	3.8%
20		4	1			5	1.7	13.0%
22		13	2			15	6.1	47.0%
24		3	1			4	2.1	15.8%
26		2	1			3	1.9	14.5%
30		1				1	0.8	5.8%
Total		25	5			30	13.0	

Sawtimber Volume by Timber Type

Timber Type	# Trees	Volume	Avg BF/Tree	% of Total
Hardwood	304	142.4	468.5	97.2%
Pine	17	4.1	243.5	2.8%
Total	321	146.6	456.5	

Sawtimber Volume by DBH

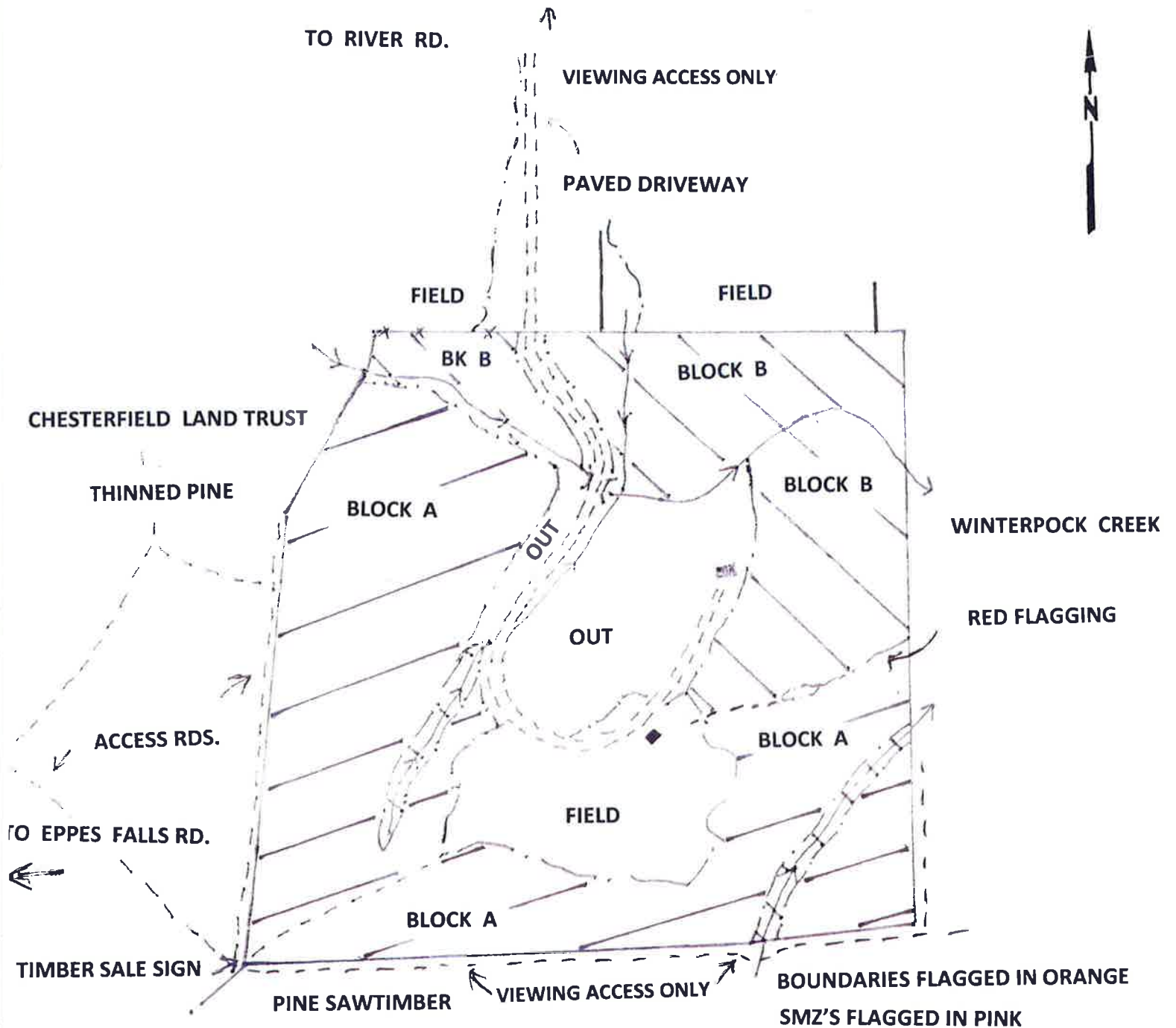
DBH	# Trees	Volume	Avg BF/Tree	% of Total
12	3	0.2	68.0	0.1%
14	5	0.9	186.0	0.6%
16	10	2.4	243.1	1.7%
18	46	13.2	286.9	9.0%
20	84	33.1	394.0	22.6%
22	91	41.4	454.7	28.2%
24	42	24.3	579.3	16.6%
26	25	17.1	683.4	11.7%
28	6	4.9	820.7	3.4%
30	7	6.5	924.9	4.4%
34	1	1.4	1,383.0	0.9%
36	1	1.1	1,121.0	0.8%
Total	321	146.6	456.5	

Sawtimber Volume by Species

Species	# Trees	Volume	Avg BF/Tree	% of Total
Ash	9	3.2	355.6	2.2%
Gum	9	3.3	363.4	2.2%
Hickory	19	7.5	392.7	5.1%
Loblolly Pine	17	4.1	243.5	2.8%
Maple	1	0.3	314.0	0.2%
Northern Red Oak	42	19.3	459.4	13.2%
Poplar	148	74.3	502.2	50.7%
Red Oak	42	20.2	480.2	13.8%
Walnut	4	1.4	354.0	1.0%
White Oak	30	13.0	431.9	8.8%
Total	321	146.6	456.5	

RIVERSOL LLC PROPERTY

CHESTERFIELD COUNTY, VA



BLOCK A - CLEARCUT 83 ACRES

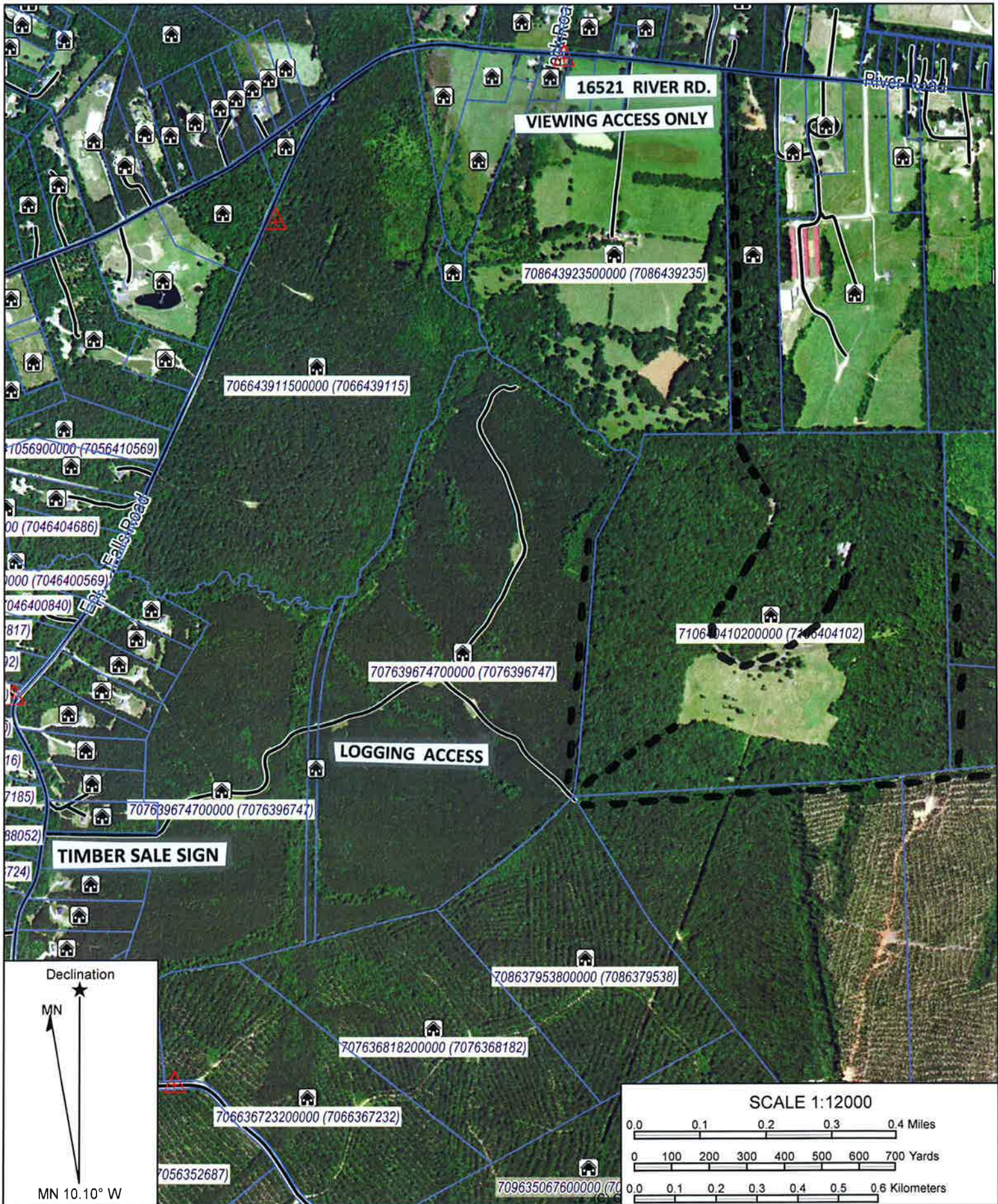
BLOCK B - SELECT CUT 54 ACRES

DATE: 4-5-18
SCALE: 1" = 660'



TIMBER MARKETING & MANAGEMENT, INC.
Professional Forestry Consultants

P.O. Box 396
Chesterfield, VA 23832
Ph (804) 796-9622
Fax (804) 796-9693

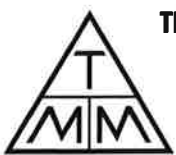
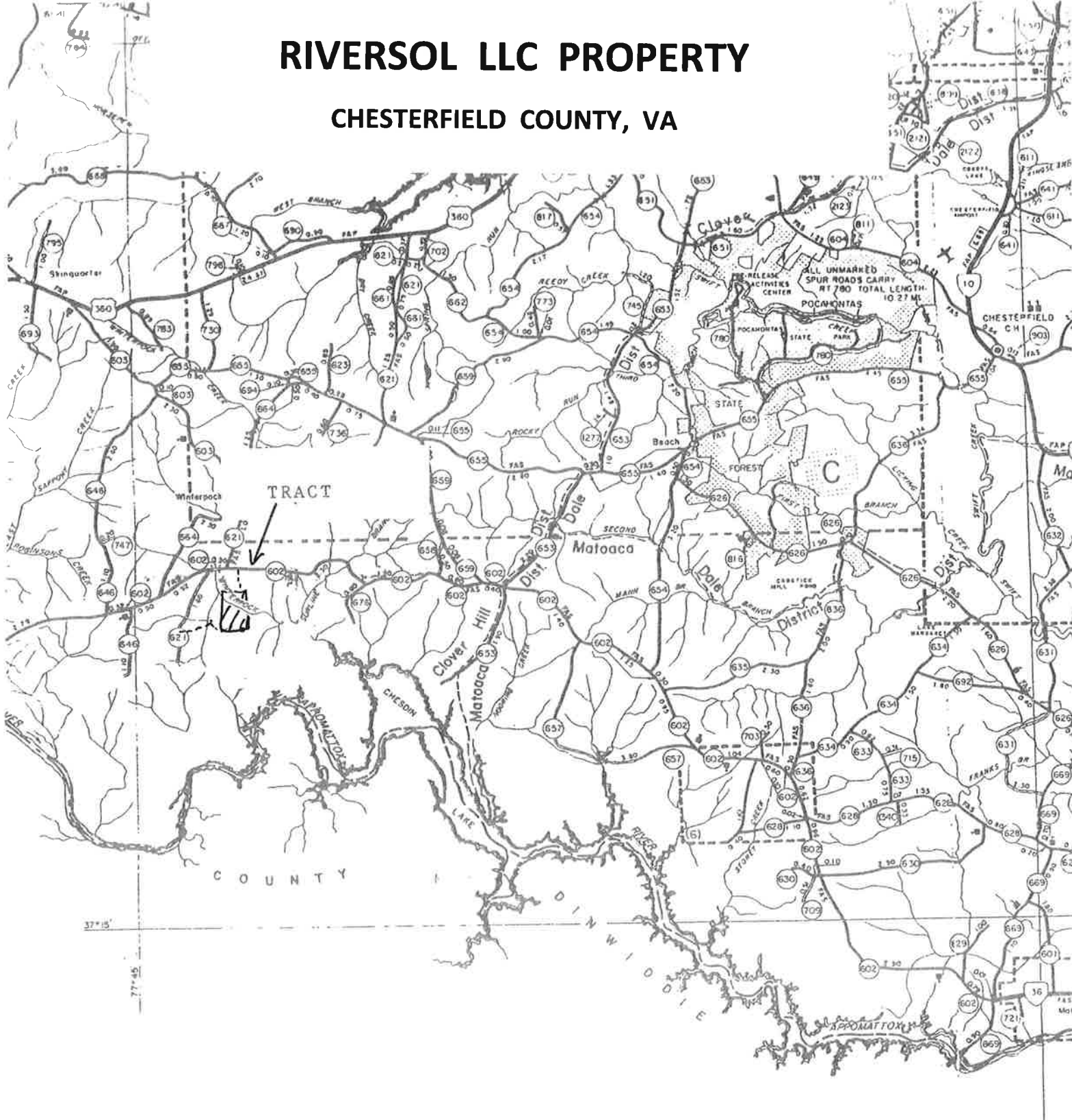


Name: RiverSol LLC
 Date: 4-5-18
 Scale: 1" = 1000'

Location: 037° 19' 04.7887" N, 077° 43' 31.4777" W
 Caption: Chesterfield County, VA

RIVERSOL LLC PROPERTY

CHESTERFIELD COUNTY, VA



TIMBER MARKETING & MANAGEMENT, INC.

Professional Forestry Consultants

P.O. Box 396

Chesterfield, VA 23832

Ph (804) 796-6922

Fax (804) 796-9693

www.tmmva.com