

TIMBER MARKETING & MANAGEMENT INC.

Professional Forestry Consultants

P.O. Box 396
 Chesterfield, VA 23832
 Ph (804) 796-9622
 Fax (804) 796-9693
 www.tmmva.com

Sale Date:	July 18, 2024		
Time:	11:00 a.m.		
Day:	Thursday		
	Hardwood	Pine	SMZ's
Total Vol./Acre:	9,806 BF	10,150 BF	3,465 BF
Pine Vol/Tree:	197 BF	84 BF	179 BF
HW Vol/Tree:	191 BF	84 BF	461 BF

CLEAR CUT SALE

Having been employed by **Carlyle Clements et al** we solicit bids on all merchantable timber on **34 +/- acres** and on the blue marked timber only on **9 +/- acres (SMZ's)** in **King William County, Virginia** and as shown on the attached map.

We made an appropriate plot cruise of the pulpwood-size trees to be harvested. Our estimate of their volume is:

	Hardwood 8.3% Cruise	Pine 17% Cruise	SMZ's na	Total Cords	Total Tons
<u><i>Pulpwood</i></u>	<u><i>Cords</i></u>	<u><i>Cords</i></u>	<u><i>Cords</i></u>		
Pine	6	258	0	264	686
Soft Hardwood	25	37	0	62	174
Hard Hardwood	<u>13</u>	<u>14</u>	<u>0</u>	<u>27</u>	<u>76</u>
Total:	44	309	0	353	936

We made an 100% tree count of Hardwood Block and SMZ's and a 17% cruise of the Pine Block of the sawtimber size trees to be harvested is. Our estimate of their volume is:

<u><i>Sawtimber</i></u>	Hardwood 100% Count	Pine 17% Cruise	SMZ's 100% Count	Total	
Loblolly Pine	5,300	282,700	17,400	305,400	
Poplar	25,200	1,500	4,600	31,300	
Red Oak	10,900	0	2,200	13,100	
Sycamore	2,100	0	4,700	6,800	
White Oak	6,800	<u>0</u>	0	6,800	
Gum	3,400	0	1,700	5,100	
Hickory	2,500	0	700	3,200	
Maple	1,100	0	0	1,100	
Beech	800	0	0	800	
Walnut	<u>700</u>	<u>0</u>	<u>0</u>	<u>700</u>	
Total:	58,800	284,200	31,300	374,300	BF Int 1/4" Scale

The above volumes are not guaranteed; however, care was taken in the field to assemble the above tables. You should note how your utilization practices may vary from the above and make any necessary adjustments.

Conditions

1. The landowner assumes responsibility for compliance with the Virginia State Seed Tree Law.
2. The buyer is required to have commercial insurance coverage including \$1,000,000 in General Liability coverage as well as adequate Workman's Compensation coverage for the entire duration of the timber harvest.
3. A period of time of **26 months** will be allowed to cut and remove the timber.
4. Roads **must** be maintained and restored to their original condition upon completion of the logging. Any newly constructed roads and decks must be left in a graded condition and must be seeded upon completion of logging. Any newly constructed haul roads, skid roads and log decks and all logging operations must be in accordance with the guidelines set out in the **Best Management Practices Manual** of the Virginia Department of Forestry.
5. No tops or laps will be allowed to remain in the streams, fields, buffers or over cutting boundaries. They must be pulled back immediately.
6. Only the blue marked trees are to be cut from Streamside Management Zones.
7. No logging will be permitted during excessively wet weather conditions as determined by Timber Marketing & Management, Inc. If logging is halted due to weather conditions, then an extension of time equal to the time lost will be granted.
8. A **\$2,800.00** performance bond will be paid at closing and held by Timber Marketing & Management, Inc. to insure compliance with all BMP requirements, road maintenance and conditions of the Timber Purchase Contract.


Only sealed bids will be accepted and owners reserve the right to reject any or all bids. BIDS SHOULD BE SUBMITTED PRIOR TO THE TIME OF BID OPENING AND CAN BE SUBMITTED VIA: Mail to: Timber Marketing & Management, Inc. P. O. Box 396, Chesterfield, Virginia 23832 **OR** hand delivered to 9520 Ironbridge Road, Chesterfield, Virginia **OR** telephoned in to 804-796-9622 **OR** faxed to 804-796-9693 **OR** emailed to **office@tmmva.com** Bids must be made on a lump-sum basis and must be received at this address no later than the posted bid date and time as shown on the cover. Closing shall take place within 30 days of bid acceptance.

There will be no scheduled show trip of the tract; however, you may call and set an appointment or you may inspect the property at your own leisure.

An electronic copy of this sale notice, including maps and volumes, is available for download and viewing on our website at www.tmmva.com under the Timber Sale Notices section.

Sincerely,
Timber Marketing & Management, Inc.


Stephen P. Lindberg, President
804-796-9622 Office
804-512-3578 Mobile


Marvin William, Area Manager
804-796-9622 Office
804-338-8458 Mobile

Clements Tract - Hardwood Blocks

Timber Marketing & Management, Inc.

Professional Forestry Consultants

P.O. Box 396

Chesterfield, VA 23832-0000

Phone: (804) 796-9622 • Fax: (804) 796-9693

Pulpwood Cruise: 8.3%

Sawtimber Cruise: 100.0%

Cruise Date: Thursday, June 22, 2023

Owner's Name: Clements, Carlyle

County/State: King William County, Va

Acreage: 6+/-

Cruise Type: Plot Cruise

Harvest Type: Clear Cut

Total BF/Acre: 9,806

Pine Vol/Tree: 196.5

Hardwood Vol/Tree: 190.5

Volume Legend:

- 1) Diameters shown in inches (DBH)
- 2) Logs measured in 16' increments
- 3) Sawtimber volumes are shown in thousands of board feet (MBF)
- 4) Volume scale used for each species of sawtimber is noted
- 5) Pulpwood volumes are shown in standard cords (128 cubic feet)

Comments:

Pulpwood

Standard Cord

DBH	Wood Classification							
	Pine		Soft Hardwood		Hard Hardwood		Cedar	
	# Trees	Volume	# Trees	Volume	# Trees	Volume	# Trees	Volume
6			72	3	60	2		
8	24	2	24	2	48	4		
10	24	4	72	10	36	5		
12			36	7	12	2		
14			12	3				
Total	48	6	217	25	157	13		

Beech - Sawtimber

International 1/4 Scale

DBH	Number of Logs					# Trees	Volume	% of Total
	1-Log	2-Log	3-Log	4-Log	5-Log			
12	2					2	0.1	13.6%
14	1					1	0.1	10.1%
16	2					2	0.2	27.3%
20	1					1	0.2	22.0%
22	1					1	0.2	26.9%
Total	7					7	0.8	

Gum - Sawtimber

International 1/4 Scale

DBH	Number of Logs					# Trees	Volume	% of Total
	1-Log	2-Log	3-Log	4-Log	5-Log			
12	4					4	0.2	6.6%
14	3	2				5	0.5	15.5%
16	3	4	2			9	1.6	47.1%
18		1	1			2	0.6	17.1%
24		1				1	0.5	13.7%
Total	10	8	3			21	3.4	

Hickory - Sawtimber

International 1/4 Scale

DBH	Number of Logs					# Trees	Volume	% of Total
	1-Log	2-Log	3-Log	4-Log	5-Log			
12	3					3	0.2	6.7%
14	2	1				3	0.3	12.2%
16	2					2	0.2	8.9%
18	2	2				4	0.8	31.2%
20	1	2				3	0.8	32.2%
22	1					1	0.2	8.8%
Total	11	5				16	2.5	

Loblolly Pine - Sawtimber

International 1/4 Scale

DBH	Number of Logs					# Trees	Volume	% of Total
	1-Log	2-Log	3-Log	4-Log	5-Log			
10	1					1	0.0	0.7%
12	3	1	2			6	0.5	9.4%
14	2					2	0.2	3.1%
16	2	4	2			8	1.5	28.2%
18	2	1	2			5	1.2	22.8%
20	1		2			3	1.0	19.5%
22	1					1	0.2	4.2%
24			1			1	0.6	12.1%
Total	12	6	9			27	5.3	

Maple - Sawtimber

International 1/4 Scale

DBH	Number of Logs					# Trees	Volume	% of Total
	1-Log	2-Log	3-Log	4-Log	5-Log			
12	1					1	0.1	5.2%
16	3					3	0.3	31.5%
18	2					2	0.3	27.0%
22			1			1	0.4	36.3%
Total	6	1				7	1.1	

Clements Tract - Hardwood Blocks

Timber Marketing & Management, Inc.

Cruise Date: Thursday, June 22, 2023
 Owner's Name: Clements, Carlyle
 County/State: King William County, Va

Poplar - Sawtimber International 1/4 Scale

DBH	Number of Logs					# Trees	Volume	% of Total
	1-Log	2-Log	3-Log	4-Log	5-Log			
12	21					21	1.2	4.7%
14	9	20				29	3.6	14.1%
16	9	24	6			39	7.1	28.2%
18	4	16	3			23	5.6	22.0%
20		6	6			12	4.4	17.6%
22		5	1			6	2.5	9.8%
28			1			1	0.9	3.6%
Total	43	71	17			131	25.2	

Red Oak - Sawtimber International 1/4 Scale

DBH	Number of Logs					# Trees	Volume	% of Total
	1-Log	2-Log	3-Log	4-Log	5-Log			
12	1					1	0.1	0.5%
14	8	3				11	1.1	10.0%
16	8	8				16	2.4	22.2%
18	6	6				12	2.4	21.6%
20	2	3				5	1.3	12.0%
22	3	2				5	1.4	13.2%
24	1					1	0.3	2.4%
26		2				2	1.1	10.2%
32		1				1	0.9	8.0%
Total	29	25				54	10.9	

Sycamore - Sawtimber International 1/4 Scale

DBH	Number of Logs					# Trees	Volume	% of Total
	1-Log	2-Log	3-Log	4-Log	5-Log			
12	1					1	0.1	2.6%
14	2					2	0.2	7.8%
18	1					1	0.1	6.8%
22		1				1	0.4	18.2%
24		1				1	0.5	22.1%
28			1			1	0.9	42.5%
Total	4	2	1			7	2.1	

Walnut - Sawtimber International 1/4 Scale

DBH	Number of Logs					# Trees	Volume	% of Total
	1-Log	2-Log	3-Log	4-Log	5-Log			
12	2					2	0.1	16.8%
14	2	1				3	0.3	46.0%
18		1				1	0.2	37.2%
Total	4	2				6	0.7	

White Oak - Sawtimber International 1/4 Scale

DBH	Number of Logs					# Trees	Volume	% of Total
	1-Log	2-Log	3-Log	4-Log	5-Log			
12	2					2	0.1	1.6%
14	5	6				11	1.3	18.5%
16	2	3				5	0.8	11.7%
18	3	4				7	1.4	20.9%
20		2				2	0.6	9.2%
22		2				2	0.8	11.4%
24		2				2	0.9	13.8%
32		1				1	0.9	12.8%
Total	12	20				32	6.8	

Sawtimber Volume by Timber Type

Timber Type	# Trees	Volume	Avg BF/Tree	% of Total
Hardwood	281	53.5	190.5	91.0%
Pine	27	5.3	196.5	9.0%
Total	308	58.8	191.0	

Sawtimber Volume by DBH

DBH	# Trees	Volume	Avg BF/Tree	% of Total
10	1	0.0	36.0	0.1%
12	43	2.6	59.8	4.4%
14	67	7.5	111.6	12.7%
16	84	14.2	169.1	24.1%
18	57	12.6	220.8	21.4%
20	26	8.4	323.2	14.3%
22	18	6.1	339.5	10.4%
24	6	2.8	464.3	4.7%
26	2	1.1	558.0	1.9%
28	2	1.8	904.0	3.1%
32	2	1.7	870.0	3.0%
Total	308	58.8	191.0	

Sawtimber Volume by Species

Species	# Trees	Volume	Avg BF/Tree	% of Total
Beech	7	0.8	117.3	1.4%
Gum	21	3.4	162.7	5.8%
Hickory	16	2.5	157.1	4.3%
Loblolly Pine	27	5.3	196.5	9.0%
Maple	7	1.1	152.4	1.8%
Poplar	131	25.2	192.5	42.9%
Red Oak	54	10.9	201.9	18.5%
Sycamore	7	2.1	303.7	3.6%
Walnut	6	0.7	111.2	1.1%
White Oak	32	6.8	212.5	11.6%
Total	308	58.8	191.0	

Clements Tract - Pine Block

Timber Marketing & Management, Inc.

Professional Forestry Consultants

P.O. Box 396

Chesterfield, VA 23832-0000

Phone: (804) 796-9622 • Fax: (804) 796-9693

Pulpwood Cruise: 17.0%

Sawtimber Cruise: 17.0%

Cruise Date: Thursday, June 22, 2023

Owner's Name: Clements, Carlyle

County/State: King William County, VA

Acreage: 28+/-

Cruise Type: Plot Cruise

Harvest Type: Clear Cut

Total BF/Acre: 10,150

Pine Vol/Tree: 84.0

Hardwood Vol/Tree: 83.7

Volume Legend:

- 1) Diameters shown in inches (DBH)
- 2) Logs measured in 16' increments
- 3) Sawtimber volumes are shown in thousands of board feet (MBF)
- 4) Volume scale used for each species of sawtimber is noted
- 5) Pulpwood volumes are shown in standard cords (128 cubic feet)

Comments:

Pulpwood

Standard Cord

DBH	Wood Classification						# Trees	Volume
	Pine		Soft Hardwood		Hard Hardwood			
# Trees	Volume	# Trees	Volume	# Trees	Volume	# Trees	Volume	
6	776	35	265	10	129	5		
8	941	94	100	8	35	3		
10	647	107	106	14	18	2		
12	82	22	24	5	12	2		
14					6	2		
Total	2,447	258	494	37	200	14		

Loblolly Pine - Sawtimber

International 1/4 Scale

DBH	Number of Logs					# Trees	Volume	% of Total
	1-Log	2-Log	3-Log	4-Log	5-Log			
10	953	665				1,618	73.5	26.0%
12	165	524	659			1,347	136.4	48.3%
14	6	100	224			329	56.2	19.9%
16		29	35			65	14.6	5.2%
18			6			6	2.0	0.7%
Total	1,124	1,318	924			3,365	282.7	

Poplar - Sawtimber

International 1/4 Scale

DBH	Number of Logs					# Trees	Volume	% of Total
	1-Log	2-Log	3-Log	4-Log	5-Log			
12	6					6	0.3	22.3%
14	6					6	0.5	33.1%
16	6					6	0.7	44.6%
Total	18					18	1.5	

Sawtimber Volume by Timber Type

Timber Type	# Trees	Volume	Avg BF/Tree	% of Total
Hardwood	18	1.5	83.7	0.5%
Pine	3,365	282.7	84.0	99.5%
Total	3,382	284.2	84.0	

Sawtimber Volume by DBH

DBH	# Trees	Volume	Avg BF/Tree	% of Total
10	1,618	73.5	45.5	25.9%
12	1,353	136.8	101.1	48.1%
14	335	56.7	169.0	19.9%
16	71	15.3	216.5	5.4%
18	6	2.0	336.0	0.7%
Total	3,382	284.2	84.0	

Sawtimber Volume by Species

Species	# Trees	Volume	Avg BF/Tree	% of Total
Loblolly Pine	3,365	282.7	84.0	99.5%
Poplar	18	1.5	83.7	0.5%
Total	3,382	284.2	84.0	

Clements Tract - SMZ

Timber Marketing & Management, Inc.

Professional Forestry Consultants

P. O. Box 396

Chesterfield, VA 23832-0000

Phone: (804) 796-9622 • Fax: (804) 796-9693

Sawtimber Cruise: 100.0%

Cruise Date: Thursday, June 22, 2023
 Owner's Name: Clements, Carlyle
 County/State: King William County, VA
 Acreage: 9+/-
 Cruise Type: Tree Count
 Harvest Type: Select Cut
 Total BF/Acre: 3,465
 Pine Vol/Tree: 178.9
 Hardwood Vol/Tree: 461.2

Volume Legend:

- 1) Diameters shown in inches (DBH)
- 2) Logs measured in 16' increments
- 3) Sawtimber volumes are shown in thousands of board feet (MBF)
- 4) Volume scale used for each species of sawtimber is noted
- 5) Pulpwood volumes are shown in standard cords (128 cubic feet)

Comments:

Gum - Sawtimber International 1/4 Scale

Number of Logs								
DBH	1-Log	2-Log	3-Log	4-Log	5-Log	# Trees	Volume	% of Total
16		2				2	0.4	22.1%
18		1				1	0.2	14.5%
20		1				1	0.3	18.3%
22		2				2	0.8	45.1%
Total		6				6	1.7	

Hickory - Sawtimber International 1/4 Scale

Number of Logs								
DBH	1-Log	2-Log	3-Log	4-Log	5-Log	# Trees	Volume	% of Total
20		1				1	0.3	44.8%
22		1				1	0.4	55.2%
Total		2				2	0.7	

Loblolly Pine - Sawtimber International 1/4 Scale

Number of Logs								
DBH	1-Log	2-Log	3-Log	4-Log	5-Log	# Trees	Volume	% of Total
12	1	11	23			35	3.8	22.1%
14		10	29	1		40	7.0	40.5%
16		2	10			12	2.9	16.9%
18	1	4	1			6	1.5	8.5%
22		2				2	0.8	4.5%
26		1				1	0.6	3.2%
30		1				1	0.8	4.4%
Total	2	31	63	1		97	17.4	

Poplar - Sawtimber International 1/4 Scale

Number of Logs								
DBH	1-Log	2-Log	3-Log	4-Log	5-Log	# Trees	Volume	% of Total
16		6				6	1.1	24.8%
18		2	1			3	0.8	18.1%
22		1				1	0.4	8.4%
26		2				2	1.1	24.3%
36		1				1	1.1	24.4%
Total		12	1			13	4.6	

Red Oak - Sawtimber International 1/4 Scale

Number of Logs								
DBH	1-Log	2-Log	3-Log	4-Log	5-Log	# Trees	Volume	% of Total
20		1				1	0.3	14.5%
32		1				1	0.9	40.0%
34		1				1	1.0	45.5%
Total		3				3	2.2	

Sycamore - Sawtimber International 1/4 Scale

Number of Logs								
DBH	1-Log	2-Log	3-Log	4-Log	5-Log	# Trees	Volume	% of Total
22			1			1	0.5	11.4%
28		1				1	0.7	14.1%
32		1				1	0.9	18.7%
34		2				2	2.0	42.5%
36	1					1	0.6	13.3%
Total	1	4	1			6	4.7	

Clements Tract - SMZ

Timber Marketing & Management, Inc.

Cruise Date: Thursday, June 22, 2023
Owner's Name: Clements, Carlyle
County/State: King William County, VA

Sawtimber Volume by Timber Type

<u>Timber Type</u>	<u># Trees</u>	<u>Volume</u>	<u>Avg BF/Tree</u>	<u>% of Total</u>
Hardwood	30	13.8	461.2	44.4%
Pine	97	17.4	178.9	55.6%
Total	127	31.2	245.6	

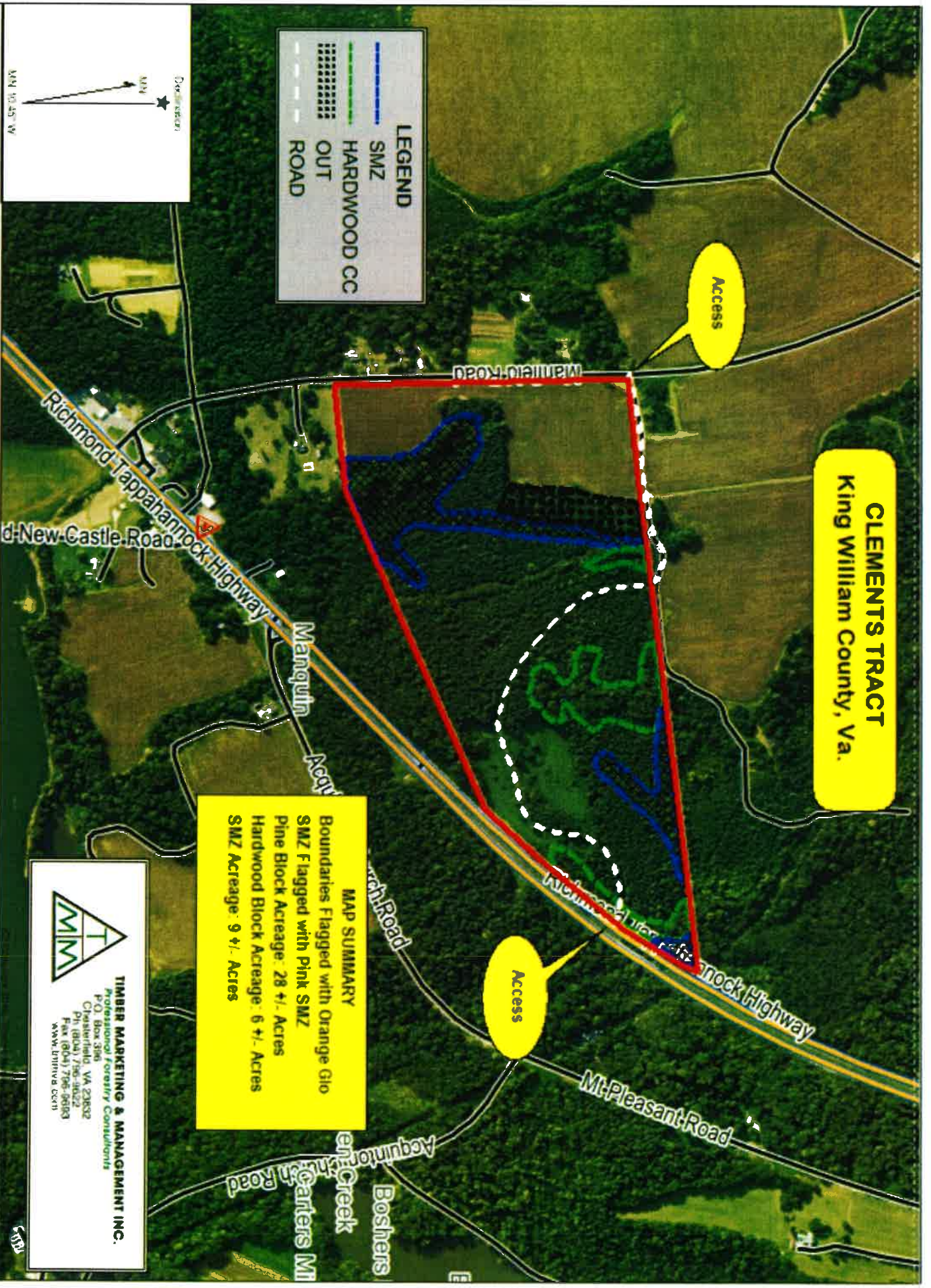
Sawtimber Volume by DBH

<u>DBH</u>	<u># Trees</u>	<u>Volume</u>	<u>Avg BF/Tree</u>	<u>% of Total</u>
12	35	3.8	109.4	12.3%
14	40	7.0	175.5	22.5%
16	20	4.5	223.0	14.3%
18	10	2.6	255.2	8.2%
20	3	0.9	314.0	3.0%
22	7	2.9	407.1	9.1%
26	3	1.7	558.0	5.4%
28	1	0.7	654.0	2.1%
30	1	0.8	758.0	2.4%
32	2	1.7	870.0	5.6%
34	3	3.0	989.0	9.5%
36	2	1.7	870.5	5.6%
Total	127	31.2	245.6	

Sawtimber Volume by Species

<u>Species</u>	<u># Trees</u>	<u>Volume</u>	<u>Avg BF/Tree</u>	<u>% of Total</u>
Gum	6	1.7	286.0	5.5%
Hickory	2	0.7	350.5	2.2%
Loblolly Pine	97	17.4	178.9	55.6%
Poplar	13	4.6	353.5	14.7%
Red Oak	3	2.2	724.3	7.0%
Sycamore	6	4.7	775.0	14.9%
Total	127	31.2	245.6	

CLEMENTS TRACT
King William County, Va.



LEGEND

- SMZ
- HARDWOOD CC
- SMZ F
- ROAD

MAP SUMMARY
Boundaries Flagged with Orange Gto
SMZ F flagged with pink SMZ
Pine Block Acreage: 28 +/- Acres
Hardwood Block Acreage: 6 +/- Acres
SMZ Acreage: 9 +/- Acres





TIMBER MARKETING & MANAGEMENT INC.
Professional Forestry Consultants
P.O. Box 336
Chesterfield, VA 23032
Ph: (804) 756-3622
Fax: (804) 796-9583
www.tmmva.com

Name: MANQUIN NE, VA
Date: 06/22/23
Scale: 1 inch = 800 ft

Location: CLEMENTS TRACT - King William County, Va

CLEMENTS TRACT
King William County, Va.

LEGEND

-  SMZ
-  HARDWOOD CC
-  OUT
-  ROAD


MAP SUMMARY

Boundaries Flagged with Orange GLO
 SMZ Flagged with Pink SMZ
 Pine Block Acreage: 28 +/- Acres
 Hardwood Block Acreage: 6 +/- Acres
 SMZ Acreage: 9 +/- Acres

TIMBER MARKETING & MANAGEMENT INC.
 Professional Forestry Consultants
 P.O. Box 596
 Cheslerfield, VA 23032
 Ph (804) 796-9627
 Fax (804) 796-9693
 www.tmmva.com



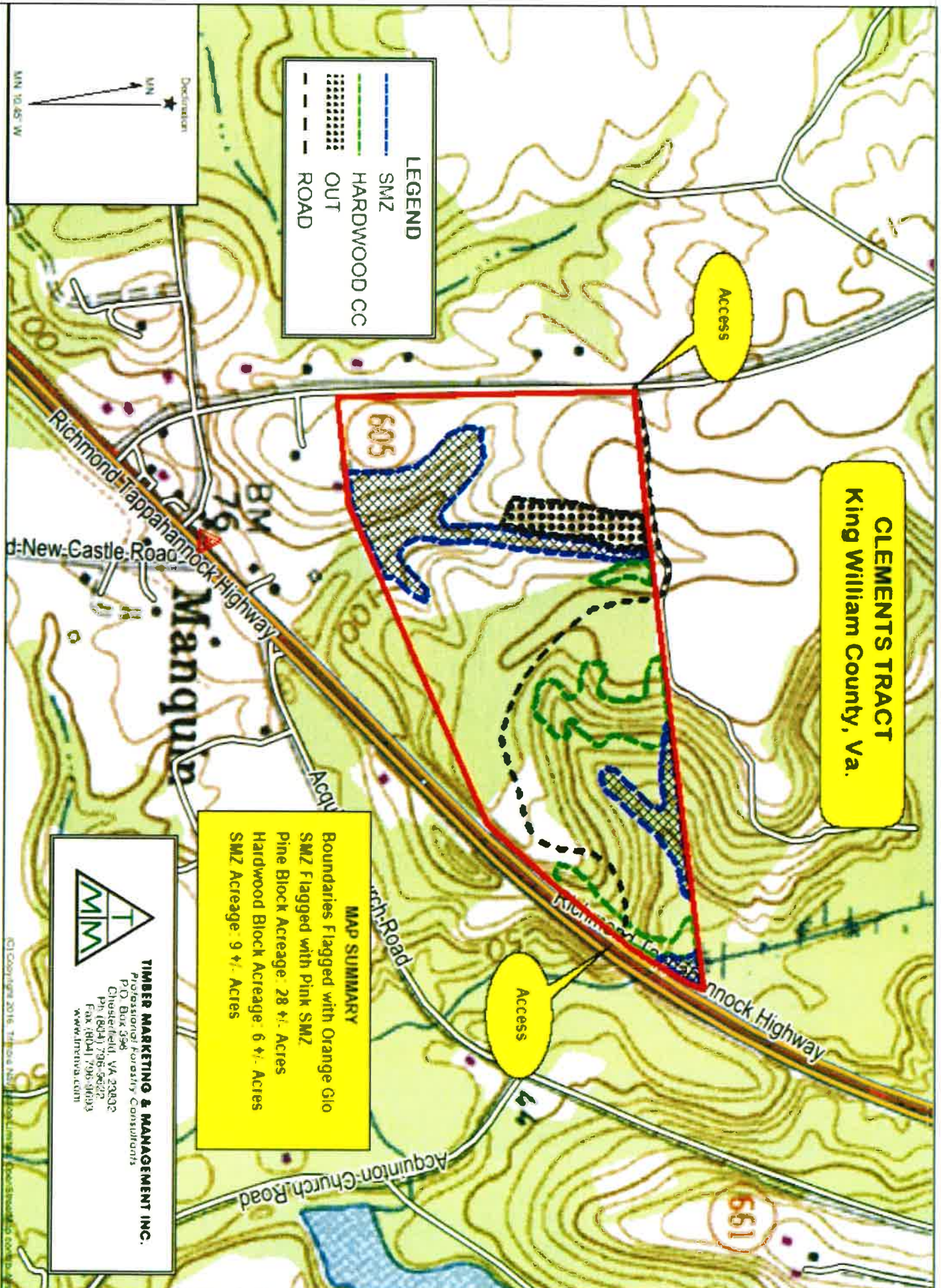
Declination



MN 10.85° W

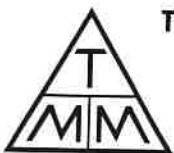
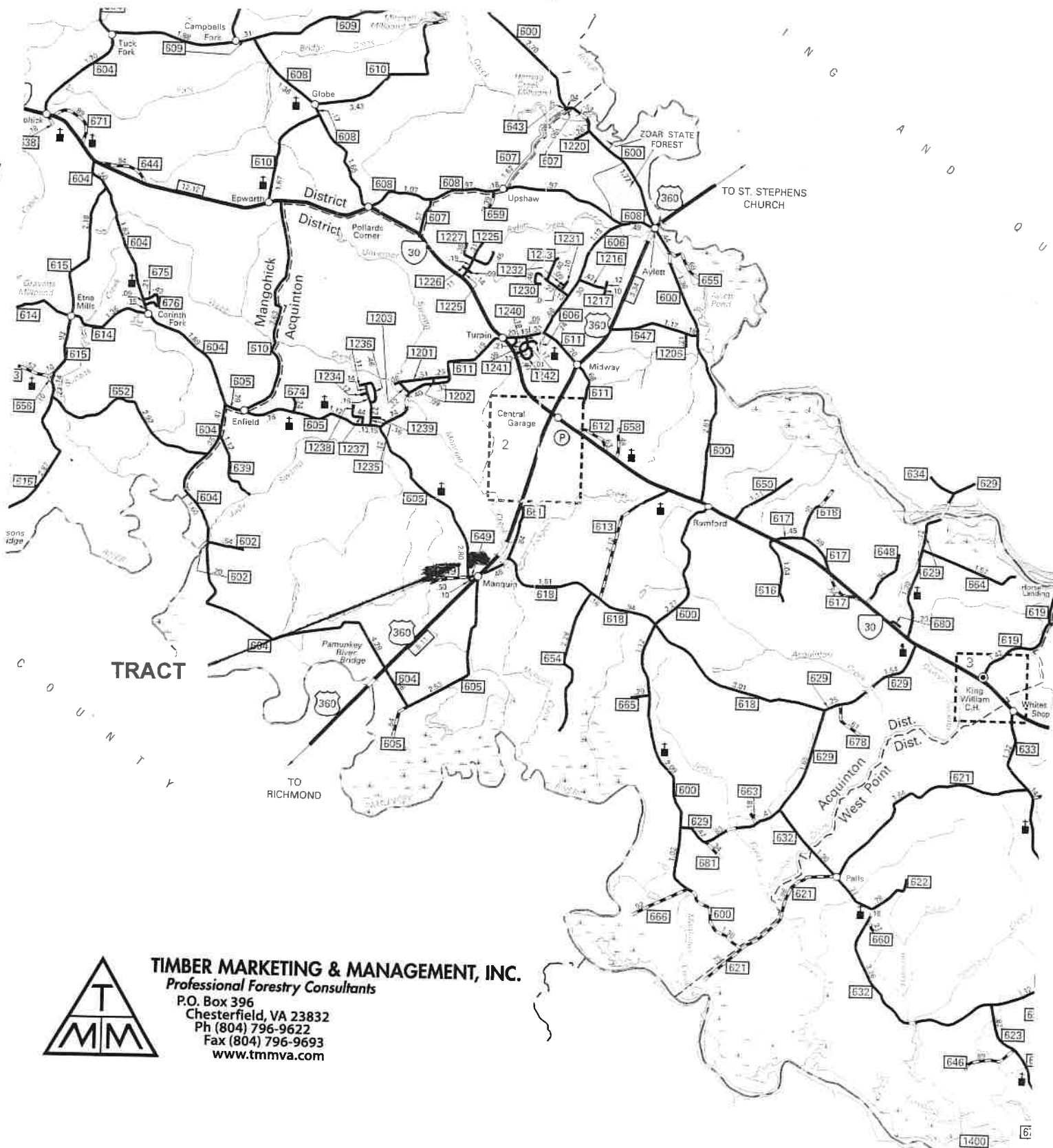
Name: MANQUIN
 Date: 06/22/23
 Scale: 1 inch = 600 ft

Location: CLEMENTS TRACT - King William County, Va



CLEMENTS et als TRACT

King William Co., Va.



TIMBER MARKETING & MANAGEMENT, INC.

Professional Forestry Consultants

P.O. Box 396

Chesterfield, VA 23832

Ph (804) 796-9622

Fax (804) 796-9693

www.tmmva.com