**TIMBER MARKETING & MANAGEMENT INC.***Professional Forestry Consultants*

P.O. Box 396

Chesterfield, VA 23832

Ph (804) 796-9622

Fax (804) 796-9693

www.tmmva.com

Sale Date:	March 4, 2021
Time:	11:00 a.m.
Day:	Thursday
Total Vol./Acre:	8,105 B. F.
Pine Vol/Tree:	108 B. F.
Hdwd. Vol/Tree:	227 B. F.

CLEAR- CUT SALE HIGH QUALITY HARDWOOD

Having been employed by **Lewis & Julie Harvie** we solicit bids on all merchantable timber on **50 +/- acres** in the clear cut and on blue marked timber only on **3 +/- acres** in the SMZ's and in **Cumberland County, Virginia** and as shown on the attached map.

We made a 5% plot cruise of the pulpwood trees to be harvested. Our estimate of their volume is:

<u>Pulpwood</u>	<u>Cords</u>	<u>Tons</u>
Pine	201	523
Soft Hardwood	158	411
Hard Hardwood	<u>70</u>	<u>182</u>
Total:	429	1,115

We have made a 100% count of the sawtimber-size trees to be harvested. Our estimate of their volume is:

Sawtimber

Poplar	199,700	Sycamore	1,400
White Oak	75,900	Gum	700
Red Oak	52,900	Cedar	700
Virginia Pine	39,000	Black Cherry	200
Hickory	25,900	Walnut	200
Shortleaf Pine	20,400	Elm	<u>100</u>
Maple	9,100		
Northern Red Oak	3,300		
		Total:	429,500 BF Int 1/4" Scale

The above volumes are not guaranteed; however, care was taken in the field to assemble the above tables. You should note how your utilization practices may vary from the above and make any necessary adjustments.

Conditions

1. The landowner assumes responsibility for compliance with the Virginia State Seed Tree Law.
2. A period of time of 2 years will be allowed to cut and remove the timber.
3. Roads **must** be maintained and restored to their original condition upon completion of the logging. Any newly constructed roads and decks must be left in a graded condition and must be seeded upon completion of logging. Any newly constructed haul roads, skid roads and log decks and all logging operations must be in accordance with the guidelines set out in the **Best Management Practices Manual** of the Virginia Department of Forestry.
4. No tops or laps will be allowed to remain in the streams, fields, buffers or over cutting boundaries. They must be pulled back immediately.
5. Only the blue marked trees are to be cut from Streamside Management Zones.
6. No logging will be permitted during excessively wet weather conditions as determined by Timber Marketing & Management, Inc. If logging is halted due to weather conditions, then an extension of time equal to the time lost will be granted.
7. A \$2,500.00 performance bond will be paid at closing and held by Timber Marketing & Management, Inc. to insure compliance with all BMP requirements, road maintenance and conditions of the Timber Purchase Contract.
8. Successful bidder will be required to sign a road use agreement with Weyerhaeuser and post a separate bond in the amount of \$1,500.00

Only sealed bids will be accepted and owners reserve the right to reject any or all bids. BIDS SHOULD BE SUBMITTED PRIOR TO THE TIME OF BID OPENING AND CAN BE SUBMITTED VIA: Mail to: Timber Marketing & Management, Inc. P. O. Box 396, Chesterfield, Virginia 23832 **OR** hand delivered to 9520 Ironbridge Road, Chesterfield, Virginia **OR** telephoned in to 804-796-9622 **OR** faxed to 804-796-9693 **OR** emailed to tmm4u@aol.com Bids must be made on a lump-sum basis and must be received at this address no later than the posted bid date and time as shown on the cover. Closing shall take place within 30 days of bid acceptance.

There will be no scheduled show trip of the tract; however, you may call and set an appointment or you may inspect the property at your own leisure.

An electronic copy of this sale notice, including maps and volumes, is available for download and viewing on our website at www.tmmva.com under the Timber Sale Notices section.

Sincerely,
Timber Marketing & Management, Inc.

A handwritten signature in black ink, appearing to read "Matt Sandman", with a long horizontal flourish extending to the right.

Matt Sandman, Area Manager
434-808-2102 mobile
804-796-9622 office

Sanderson Tract

Timber Marketing & Management, Inc.

Professional Forestry Consultants

P.O. Box 396

Chesterfield, VA 23832-0000

Phone: (804) 796-9622 • Fax: (804) 796-9693

Pulpwood Cruise: 5.0%
Sawtimber Cruise: 100.0%

Cruise Date: Saturday, January 23, 2021
Owner's Name: Harvie Sanderson
County/State: Cumberland County, VA
Acreage: 53+/-
Cruise Type: Tree Count
Harvest Type: Clear Cut
Total BF/Acre: 8,105
Pine Vol/Tree: 108.1
Hardwood Vol/Tree: 226.5

Volume Legend:

- 1) Diameters shown in inches (DBH)
- 2) Logs measured in 16' increments
- 3) Sawtimber volumes are shown in thousands of board feet (MBF)
- 4) Volume scale used for each species of sawtimber is noted
- 5) Pulpwood volumes are shown in standard cords (128 cubic feet)

Comments:

Pulpwood

Standard Cord

		Wood Classification							
		Pine		Soft Hardwood		Hard Hardwood		Cedar	
DBH	# Trees	Volume	# Trees	Volume	# Trees	Volume	# Trees	Volume	
6	520	23	700	27	280	11			
8	1,220	122	760	60	300	24			
10	260	43	440	59	180	24			
12	20	5	60	12	60	12			
14	20	8							
Total	2,040	201	1,960	158	820	70			

Black Cherry - Sawtimber

International 1/4 Scale

		Number of Logs							
DBH	1-Log	2-Log	3-Log	4-Log	5-Log	# Trees	Volume	% of Total	
16	2					2	0.2	100.0%	
Total	2					2	0.2		

Cedar - Sawtimber

International 1/4 Scale

		Number of Logs							
DBH	1-Log	2-Log	3-Log	4-Log	5-Log	# Trees	Volume	% of Total	
12	4					4	0.2	33.5%	
14	4					4	0.3	49.7%	
16	1					1	0.1	16.8%	
Total	9					9	0.7		

Elm - Sawtimber

International 1/4 Scale

		Number of Logs							
DBH	1-Log	2-Log	3-Log	4-Log	5-Log	# Trees	Volume	% of Total	
14	1					1	0.1	100.0%	
Total	1					1	0.1		

Gum - Sawtimber

International 1/4 Scale

		Number of Logs							
DBH	1-Log	2-Log	3-Log	4-Log	5-Log	# Trees	Volume	% of Total	
12	3					3	0.2	23.2%	
14	1	2				3	0.4	50.5%	
16		1				1	0.2	26.3%	
Total	4	3				7	0.7		

Hickory - Sawtimber

International 1/4 Scale

		Number of Logs							
DBH	1-Log	2-Log	3-Log	4-Log	5-Log	# Trees	Volume	% of Total	
12	49					49	2.7	10.6%	
14	18	34				52	6.3	24.3%	
16	6	23	4			33	6.1	23.4%	
18	4	7	8			19	5.0	19.3%	
20	1	2	6			9	3.4	13.0%	
22		3	1			4	1.7	6.5%	
26			1			1	0.8	3.0%	
Total	78	69	20			167	25.9		

Maple - Sawtimber

International 1/4 Scale

		Number of Logs							
DBH	1-Log	2-Log	3-Log	4-Log	5-Log	# Trees	Volume	% of Total	
12	24					24	1.3	14.7%	
14	18	4				22	2.1	22.5%	
16	6	4				10	1.4	15.7%	
18	4	4				8	1.6	17.2%	
20	1	4				5	1.4	15.7%	
22		2	1			3	1.3	14.2%	
Total	53	18	1			72	9.1		

Northern Red Oak - Sawtimber

International 1/4 Scale

		Number of Logs							
DBH	1-Log	2-Log	3-Log	4-Log	5-Log	# Trees	Volume	% of Total	
16	2					2	0.2	6.8%	
18	1	1				2	0.4	11.9%	
20	1					1	0.2	5.5%	
22		4				4	1.5	47.2%	
24		2				2	0.9	28.6%	
Total	4	7				11	3.3		

Sanderson Tract

Timber Marketing & Management, Inc.

Cruise Date: Saturday, January 23, 2021
 Owner's Name: Harvie Sanderson
 County/State: Cumberland County, VA

Poplar - Sawtimber International 1/4 Scale

Number of Logs									
DBH	1-Log	2-Log	3-Log	4-Log	5-Log	# Trees	Volume	% of Total	
12	166	1				167	9.4	4.7%	
14	17	123	72			212	32.1	16.1%	
16	6	40	108	1		155	36.2	18.1%	
18		19	93	3		115	37.2	18.6%	
20	2	16	47	6		71	28.5	14.3%	
22	1	6	33	7		47	24.4	12.2%	
24		7	14	1		22	13.1	6.5%	
26			9			9	6.9	3.5%	
28		1	3			4	3.4	1.7%	
30		1	6			7	7.1	3.5%	
34			1			1	1.4	0.7%	
Total	192	214	386	18		810	199.7		

Red Oak - Sawtimber International 1/4 Scale

Number of Logs									
DBH	1-Log	2-Log	3-Log	4-Log	5-Log	# Trees	Volume	% of Total	
12	26					26	1.5	2.8%	
14	19	17				36	4.0	7.5%	
16	8	17	5			30	5.4	10.2%	
18	5	25	6			36	8.9	16.9%	
20	2	16	5			23	7.5	14.2%	
22		11	9			20	9.0	17.0%	
24	1	6	1			8	3.7	7.0%	
26		4	4			8	5.3	10.0%	
28		1	2			3	2.5	4.7%	
30		1	2			3	2.9	5.4%	
32		1				1	0.9	1.6%	
34			1			1	1.4	2.6%	
Total	61	99	35			195	52.9		

Shortleaf Pine - Sawtimber International 1/4 Scale

Number of Logs									
DBH	1-Log	2-Log	3-Log	4-Log	5-Log	# Trees	Volume	% of Total	
10	3	1				4	0.2	0.8%	
12	7	28	20			55	5.4	26.3%	
14	1	8	37	2		48	8.5	41.7%	
16		1	17	1		19	4.8	23.7%	
18			2			2	0.7	3.3%	
20			2			2	0.9	4.2%	
Total	11	38	78	3		130	20.4		

Sycamore - Sawtimber International 1/4 Scale

Number of Logs									
DBH	1-Log	2-Log	3-Log	4-Log	5-Log	# Trees	Volume	% of Total	
12	1					1	0.1	4.0%	
14		1				1	0.1	10.0%	
18		2	1			3	0.8	58.8%	
22		1				1	0.4	27.3%	
Total	1	4	1			6	1.4		

Virginia Pine - Sawtimber International 1/4 Scale

Number of Logs									
DBH	1-Log	2-Log	3-Log	4-Log	5-Log	# Trees	Volume	% of Total	
12	174	47	1			222	14.2	36.4%	
14	75	69	3			147	16.5	42.4%	
16	18	20	1			39	6.1	15.6%	
18	1	5	1			7	1.7	4.4%	
20	1	1				2	0.5	1.3%	
Total	269	142	6			417	39.0		

Walnut - Sawtimber International 1/4 Scale

Number of Logs									
DBH	1-Log	2-Log	3-Log	4-Log	5-Log	# Trees	Volume	% of Total	
14	3					3	0.2	100.0%	
Total	3					3	0.2		

White Oak - Sawtimber International 1/4 Scale

Number of Logs									
DBH	1-Log	2-Log	3-Log	4-Log	5-Log	# Trees	Volume	% of Total	
12	75					75	4.2	5.5%	
14	37	51				88	10.3	13.5%	
16	11	33	7			51	9.3	12.2%	
18	10	28	11			49	12.1	15.9%	
20	5	21	16			42	14.3	18.9%	
22	2	22	4			28	11.1	14.6%	
24		9	4			13	6.8	9.0%	
26		5	3			8	5.1	6.7%	
28		1				1	0.7	0.9%	
30			2			2	2.1	2.8%	
Total	140	170	47			357	75.9		

Sanderson Tract

Timber Marketing & Management, Inc.

Cruise Date: Saturday, January 23, 2021
Owner's Name: Harvie Sanderson
County/State: Cumberland County, VA

Sawtimber Volume by Timber Type

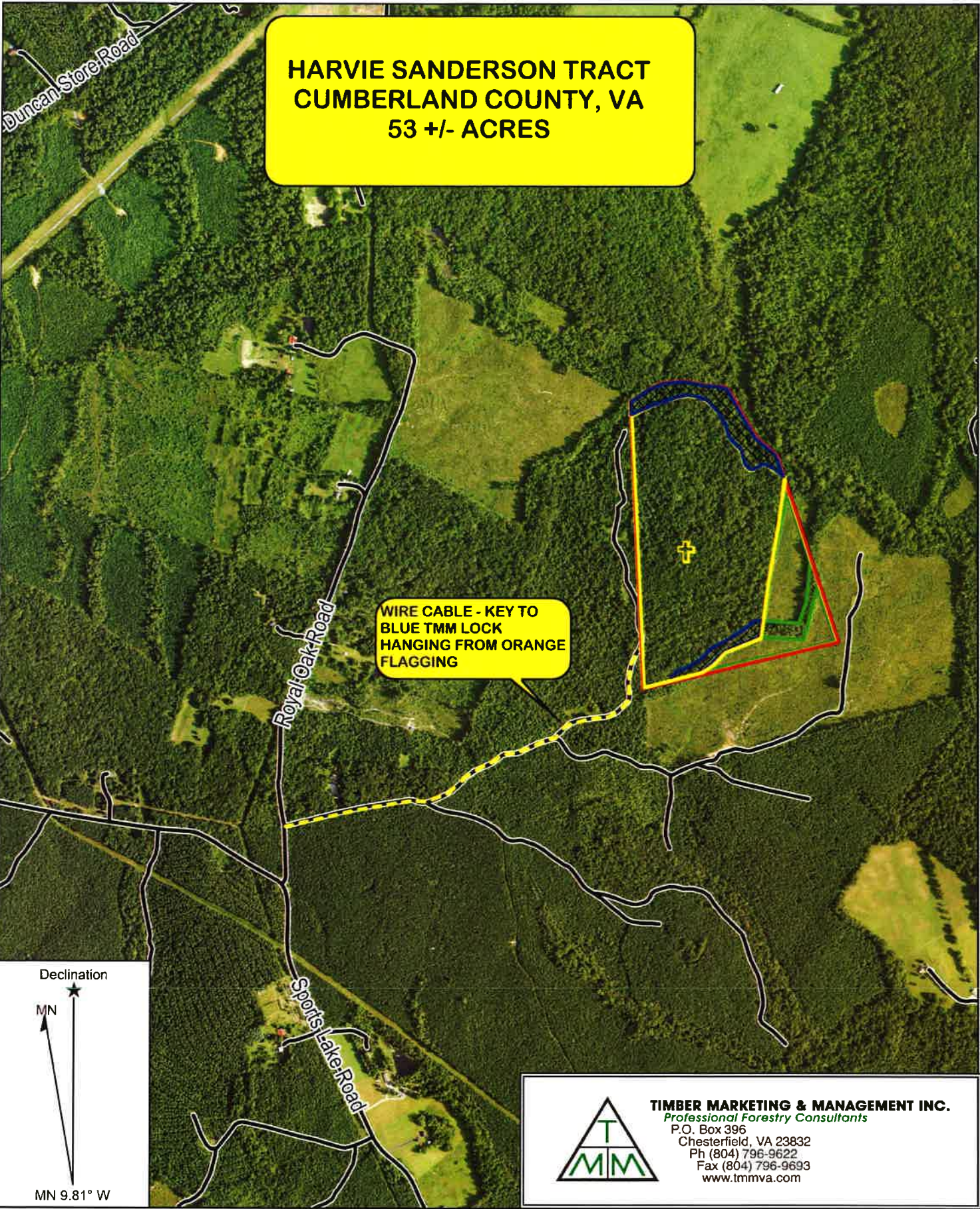
<u>Timber Type</u>	<u># Trees</u>	<u>Volume</u>	<u>Avg BF/Tree</u>	<u>% of Total</u>
Hardwood	1,631	369.5	226.5	86.0%
Pine	556	60.1	108.1	14.0%
Total	2,187	429.6	196.4	

Sawtimber Volume by DBH

<u>DBH</u>	<u># Trees</u>	<u>Volume</u>	<u>Avg BF/Tree</u>	<u>% of Total</u>
10	4	0.2	41.8	0.0%
12	626	39.1	62.5	9.1%
14	617	80.9	131.2	18.8%
16	343	70.1	204.3	16.3%
18	241	68.4	283.7	15.9%
20	155	56.7	365.9	13.2%
22	107	49.4	462.0	11.5%
24	45	24.5	545.1	5.7%
26	26	18.1	694.7	4.2%
28	8	6.5	810.3	1.5%
30	12	12.0	1,001.3	2.8%
32	1	0.9	870.0	0.2%
34	2	2.8	1,383.0	0.6%
Total	2,187	429.6	196.4	

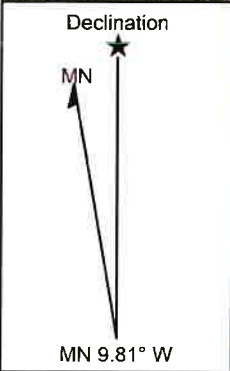
Sawtimber Volume by Species

<u>Species</u>	<u># Trees</u>	<u>Volume</u>	<u>Avg BF/Tree</u>	<u>% of Total</u>
Black Cherry	2	0.2	112.0	0.1%
Cedar	9	0.7	74.2	0.2%
Elm	1	0.1	83.0	0.0%
Gum	7	0.7	103.3	0.2%
Hickory	167	25.9	155.2	6.0%
Maple	72	9.1	127.0	2.1%
Northern Red Oak	11	3.3	298.5	0.8%
Poplar	810	199.7	246.5	46.5%
Red Oak	195	52.9	271.3	12.3%
Shortleaf Pine	130	20.4	157.2	4.8%
Sycamore	6	1.4	236.0	0.3%
Virginia Pine	417	39.0	93.5	9.1%
Walnut	3	0.2	83.0	0.1%
White Oak	357	75.9	212.5	17.7%
Total	2,187	429.6	196.4	



**HARVIE SANDERSON TRACT
CUMBERLAND COUNTY, VA
53 +/- ACRES**

**WIRE CABLE - KEY TO
BLUE TMM LOCK
HANGING FROM ORANGE
FLAGGING**



 **TIMBER MARKETING & MANAGEMENT INC.**
Professional Forestry Consultants
P.O. Box 396
Chesterfield, VA 23832
Ph (804) 796-9622
Fax (804) 796-9693
www.tmmva.com

Name: Harvie Sanderson Tract
Date: February 1, 2021
Scale: 1 inch = 1,000 ft.

Location: Cumberland County, VA
Locator Map

**HARVIE SANDERSON TRACT
CUMBERLAND COUNTY, VA
53 +/- ACRES**

**STREAMSIDE
MANAGEMENT
ZONE**

**PLANTED PINES
NOT IN SALE**



Declination

MN



MN 9.82° W

-  Cemetary
-  Property Boundaries
-  Harvest Area
-  Young Planted Pines
-  SMZs
-  Existing Road/Easement

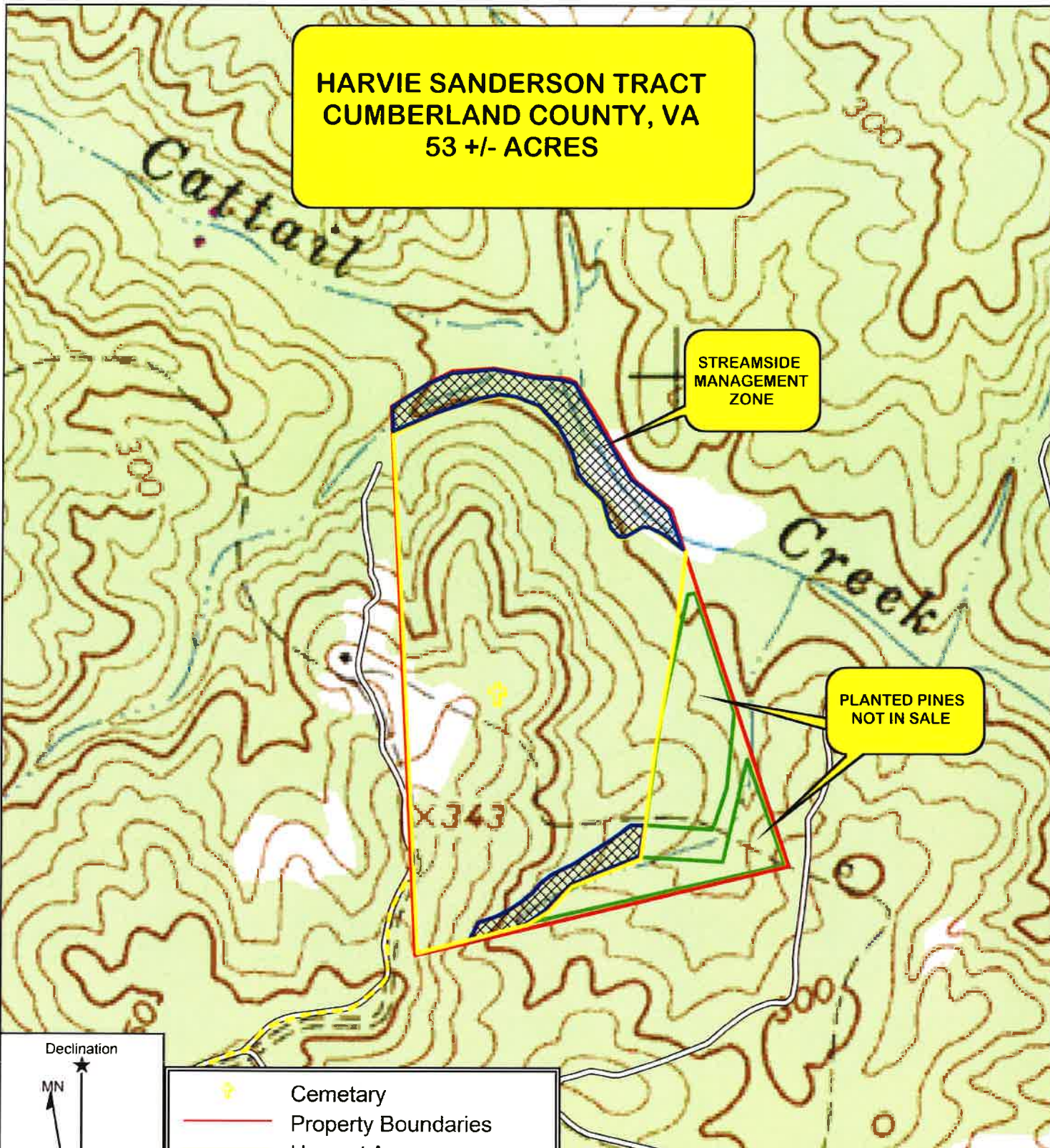


TIMBER MARKETING & MANAGEMENT INC.
Professional Forestry Consultants
P.O. Box 396
Chesterfield, VA 23832
Ph (804) 796-9622
Fax (804) 796-9693
www.tmmva.com

Name: Harvie Sanderson Tract
Date: February 1, 2021
Scale: 1 inch = 562 ft.





Location: Cumberland County, VA
1994 Aerial Photo

**HARVIE SANDERSON TRACT
CUMBERLAND COUNTY, VA
53 +/- ACRES**



**STREAMSIDE
MANAGEMENT
ZONE**

**PLANTED PINES
NOT IN SALE**

-  Cemetary
-  Property Boundaries
-  Harvest Area
-  Young Planted Pines
-  SMZs
-  Existing Road/Easement

Declination

MN

MN 9.82° W



TIMBER MARKETING & MANAGEMENT INC.
Professional Forestry Consultants
P.O. Box 396
Chesterfield, VA 23832
Ph (804) 796-9622
Fax (804) 796-9693
www.tmmva.com

Name: Harvie Sanderson Tract
Date: February 1, 2021
Scale: 1 inch = 562 ft.

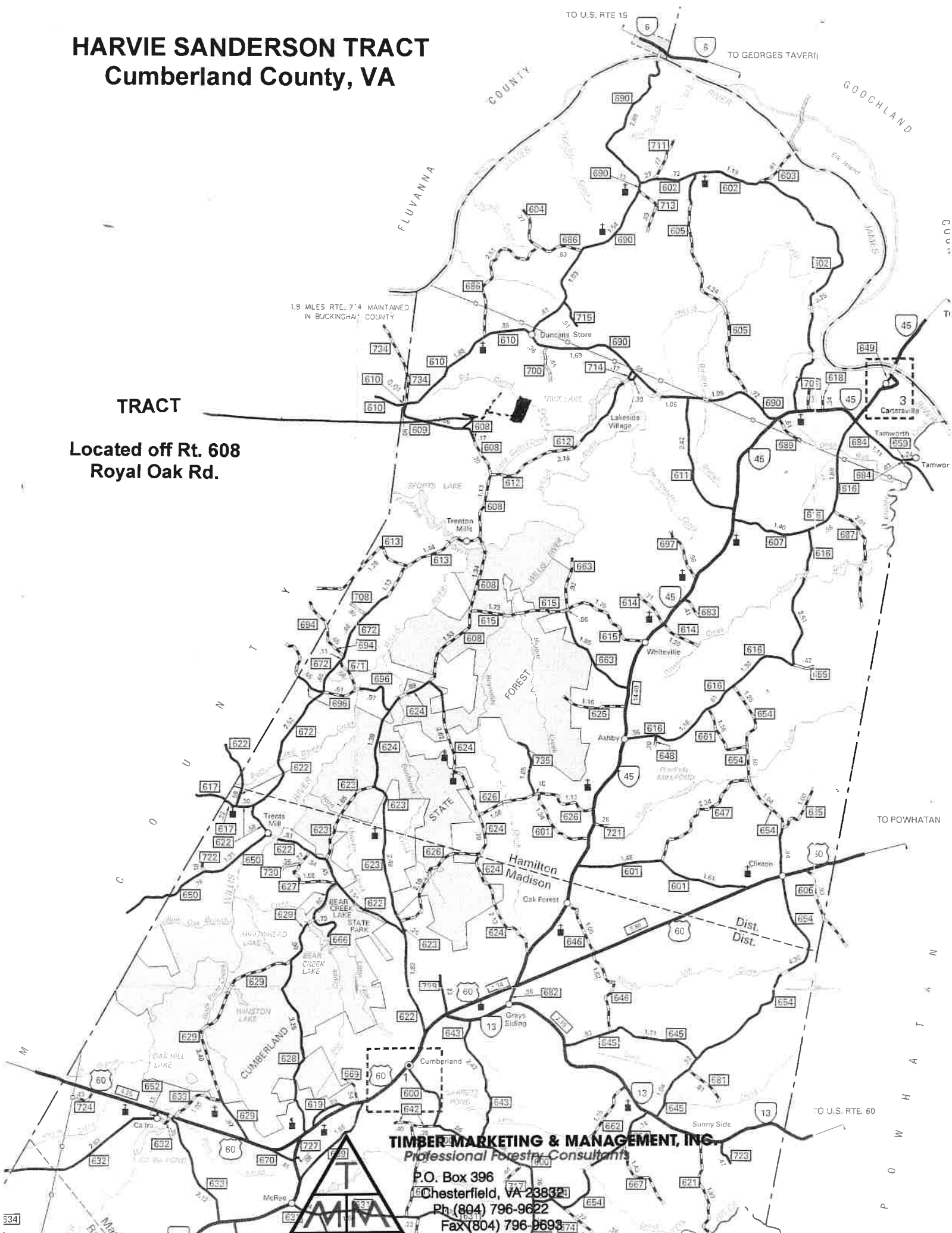
Location: Cumberland County, VA
Topographic Map

HARVIE SANDERSON TRACT

Cumberland County, VA

TRACT

Located off Rt. 608
Royal Oak Rd.



TIMBER MARKETING & MANAGEMENT, INC.
Professional Forestry Consultants

P.O. Box 396
Chesterfield, VA 23832
Ph (804) 796-9622
Fax (804) 796-9693

