

TIMBER MARKETING & MANAGEMENT INC.

Professional Forestry Consultants

P.O. Box 396
 Chesterfield, VA 23832
 Ph (804) 796-9622
 Fax (804) 796-9693
 www.tmmva.com

Sale Date:	August 12, 2021
Time:	11:00 a.m.
Day:	Thursday
Total Vol./Acre:	9,479 B. F.
Pine Vol/Tree:	101 B. F.
Hdwd. Vol/Tree:	268 B. F.

**CLEAR- CUT SALE
 ROAD SIDE ACCESS**

Having been employed by **JCM III, LLC** we solicit bids on all merchantable timber on **36 +/- acres** in **Cumberland County, Virginia** and as shown on the attached map.

We made an 8% plot cruise of the pulpwood trees to be harvested. Our estimate of their volume is:

<u>Pulpwood</u>	<u>Cords</u>	<u>Tons</u>
Pine	382	993
Soft Hardwood	143	372
Hard Hardwood	<u>84</u>	<u>218</u>
Total:	609	1,583

We made a 100% count of the sawtimber-size trees to be harvested. Our estimate of their volume is:

Sawtimber

Poplar	143,800	Black Walnut	8,200
Gum	38,800	Hickory	5,600
Loblolly/Shortleaf Pine	28,900	Maple	4,200
Red Oak	25,700	River Birch	2,000
Virginia Pine	22,000	Elm	1,000
White Oak	21,800	Beech	800
Sycamore	15,900	Hackberry	400
Northern Red Oak	13,400	Cedar	<u>100</u>
Willow Oak	8,600	Total:	341,200 BF Int 1/4" Scale

The above volumes are not guaranteed; however, care was taken in the field to assemble the above tables. You should note how your utilization practices may vary from the above and make any necessary adjustments.

Conditions

1. A period of time of **18 months** will be allowed to cut and remove the timber.
2. Roads **must** be maintained and restored to their original condition upon completion of the logging. Any newly constructed roads and decks must be left in a graded condition and must be seeded upon completion of logging. Any newly constructed haul roads, skid roads and log decks and all logging operations must be in accordance with the guidelines set out in the **Best Management Practices Manual** of the Virginia Department of Forestry.
3. No tops or laps will be allowed to remain in the streams, fields, buffers or over cutting boundaries. They must be pulled back immediately.
4. Only the blue marked trees are to be cut from Streamside Management Zones.
5. No logging will be permitted during excessively wet weather conditions as determined by Timber Marketing & Management, Inc. If logging is halted due to weather conditions, then an extension of time equal to the time lost will be granted.
6. A **\$2,000.00** performance bond will be paid at closing and held by Timber Marketing & Management, Inc. to insure compliance with all BMP requirements, road maintenance and conditions of the Timber Purchase Contract.

Only sealed bids will be accepted and owners reserve the right to reject any or all bids. BIDS SHOULD BE SUBMITTED PRIOR TO THE TIME OF BID OPENING AND CAN BE SUBMITTED VIA: Mail to: Timber Marketing & Management, Inc. P. O. Box 396, Chesterfield, Virginia 23832 **OR** hand delivered to 9520 Ironbridge Road, Chesterfield, Virginia **OR** telephoned in to 804-796-9622 **OR** faxed to 804-796-9693 **OR** emailed to tmm4u@aol.com Bids must be made on a lump-sum basis and must be received at this address no later than the posted bid date and time as shown on the cover. Closing shall take place within 30 days of bid acceptance.

There will be no scheduled show trip of the tract; however, you may call and set an appointment or you may inspect the property at your own leisure.

An electronic copy of this sale notice, including maps and volumes, is available for download and viewing on our website at www.tmmva.com under the Timber Sale Notices section.

Sincerely,
Timber Marketing & Management, Inc.



Andrew J. Lindberg, Vice President
804-338-8436 mobile
804-796-9622 office

JCM III, LLC - Pinegrove Road Tract

Timber Marketing & Management, Inc.

Professional Forestry Consultants

P.O. Box 396

Chesterfield, VA 23832-0000

Phone: (804) 796-9622 • Fax: (804) 796-9693

Pulpwood Cruise: 8.0%
Sawtimber Cruise: 100.0%

Cruise Date: Friday, August 14, 2020
Owner's Name: Cabell Metts
County/State: Cumberland County, VA
Acreage: 36+/-
Cruise Type: Tree Count
Harvest Type: Clear Cut
Total BF/Acre: 9,479
Pine Vol/Tree: 100.9
Hardwood Vol/Tree: 267.5

Volume Legend:

- 1) Diameters shown in inches (DBH)
- 2) Logs measured in 16' increments
- 3) Sawtimber volumes are shown in thousands of board feet (MBF)
- 4) Volume scale used for each species of sawtimber is noted
- 5) Pulpwood volumes are shown in standard cords (128 cubic feet)

Comments:

Pulpwood

Standard Cord

Wood Classification

DBH	Pine		Soft Hardwood		Hard Hardwood		Cedar	
	#Trees	Volume	#Trees	Volume	#Trees	Volume	#Trees	Volume
6	413	19	688	27	375	15		
8	650	65	538	42	213	17		
10	738	122	300	40	200	27		
12	488	129	138	27	100	20		
14	125	47	25	7	25	7		
Total	2,413	382	1,688	143	913	84		

Beech - Sawtimber

International 1/4 Scale

Number of Logs

DBH	1-Log	2-Log	3-Log	4-Log	5-Log	#Trees	Volume	% of Total
12	1					1	0.1	7.3%
14	2					2	0.2	21.5%
16	2					2	0.2	29.1%
18	1					1	0.1	18.7%
20	1					1	0.2	23.5%
Total	7					7	0.8	

Black Walnut - Sawtimber

International 1/4 Scale

Number of Logs

DBH	1-Log	2-Log	3-Log	4-Log	5-Log	#Trees	Volume	% of Total
12	5					5	0.3	3.4%
14	3					3	0.2	3.0%
16	4	3				7	1.0	12.4%
18	3	7	1			11	2.5	30.5%
20		5	1			6	2.0	24.3%
22		3	1			4	1.7	20.6%
24		1				1	0.5	5.7%
Total	15	19	3			37	8.2	

Cedar - Sawtimber

International 1/4 Scale

Number of Logs

DBH	1-Log	2-Log	3-Log	4-Log	5-Log	#Trees	Volume	% of Total
14	1					1	0.1	100.0%
Total	1					1	0.1	

Elm - Sawtimber

International 1/4 Scale

Number of Logs

DBH	1-Log	2-Log	3-Log	4-Log	5-Log	#Trees	Volume	% of Total
12	2					2	0.1	11.0%
16	1	1				2	0.3	29.5%
20	1		1			2	0.6	59.5%
Total	4	1	1			6	1.0	

Gum - Sawtimber

International 1/4 Scale

Number of Logs

DBH	1-Log	2-Log	3-Log	4-Log	5-Log	#Trees	Volume	% of Total
12	48					48	2.7	6.9%
14	16	26				42	5.0	12.9%
16	14	21	16			51	9.7	24.9%
18		11	8			19	5.4	14.0%
20	3	7	8			18	6.2	15.9%
22		9	2			11	4.5	11.7%
24			3			3	1.9	5.0%
26		1	2			3	2.1	5.4%
28		2				2	1.3	3.4%
Total	81	77	39			197	38.8	

Hackberry - Sawtimber

International 1/4 Scale

Number of Logs

DBH	1-Log	2-Log	3-Log	4-Log	5-Log	#Trees	Volume	% of Total
22		1				1	0.4	100.0%
Total		1				1	0.4	

Hickory - Sawtimber

International 1/4 Scale

Number of Logs

DBH	1-Log	2-Log	3-Log	4-Log	5-Log	#Trees	Volume	% of Total
12	9					9	0.5	9.0%
14	3	5				8	1.0	17.1%
16	5	2				7	0.9	16.8%
18	5	2				7	1.2	21.8%
20		3				3	0.9	16.9%
22		1				1	0.4	6.9%
24			1			1	0.6	11.5%
Total	22	13	1			36	5.6	

JCM III, LLC - Pinegrove Road Tract

Timber Marketing & Management, Inc.

Cruise Date: Friday, August 14, 2020
 Owner's Name: Cabell Metts
 County/State: Cumberland County, VA

Loblolly/Shortleaf Pine - Sawtimber International 1/4 Scale

Number of Logs								
DBH	1-Log	2-Log	3-Log	4-Log	5-Log	# Trees	Volume	% of Total
10	43	3				46	1.7	6.0%
12	20	29	36			85	8.1	28.0%
14	7	19	22			48	7.4	25.4%
16		9	13			22	5.0	17.4%
18	1	3	10			14	4.2	14.7%
20		1	2			3	1.2	4.0%
22		1				1	0.4	1.3%
28			1			1	0.9	3.1%
Total	71	65	84			220	28.9	

Maple - Sawtimber International 1/4 Scale

Number of Logs								
DBH	1-Log	2-Log	3-Log	4-Log	5-Log	# Trees	Volume	% of Total
12	7					7	0.4	9.3%
14	5	3				8	0.8	20.0%
16	1	2				3	0.5	11.7%
18	3	2				5	0.9	22.1%
20	3	1				4	0.9	20.4%
22	1					1	0.2	5.3%
24		1				1	0.5	11.2%
Total	20	9				29	4.2	

Northern Red Oak - Sawtimber International 1/4 Scale

Number of Logs								
DBH	1-Log	2-Log	3-Log	4-Log	5-Log	# Trees	Volume	% of Total
12	1					1	0.1	0.4%
14	3	1				4	0.4	2.9%
16	2	3				5	0.8	5.9%
18	3	4				7	1.4	10.6%
20	1	3				4	1.1	8.4%
22	1	3	1			5	1.9	14.2%
24	1	4	1			6	2.8	20.7%
26		1	1			2	1.3	9.9%
30		3				3	2.3	16.9%
32	1	1				2	1.4	10.1%
Total	13	23	3			39	13.4	

Poplar - Sawtimber International 1/4 Scale

Number of Logs								
DBH	1-Log	2-Log	3-Log	4-Log	5-Log	# Trees	Volume	% of Total
12	35					35	2.0	1.4%
14	7	33	5			45	6.2	4.3%
16	6	32	44			82	18.0	12.5%
18	1	16	45			62	19.2	13.4%
20		11	42	1		54	21.9	15.2%
22		13	24			37	17.7	12.3%
24		6	26			32	19.6	13.6%
26		5	13			18	12.8	8.9%
28		2	9			11	9.4	6.6%
30		1	12			13	13.4	9.3%
32			2			2	2.4	1.7%
38		1				1	1.3	0.9%
Total	49	120	222	1		392	143.8	

Red Oak - Sawtimber International 1/4 Scale

Number of Logs								
DBH	1-Log	2-Log	3-Log	4-Log	5-Log	# Trees	Volume	% of Total
12	22					22	1.2	4.8%
14	11	12				23	2.6	10.1%
16	6	11	1			18	3.0	11.7%
18	7	13	3			23	5.2	20.4%
20	3	5				8	2.1	8.2%
22	1	4				5	1.8	6.9%
24	2	4	2			8	3.7	14.4%
26	1		2			3	1.8	7.2%
28	2	3				5	2.7	10.5%
30		2				2	1.5	5.9%
Total	55	54	8			117	25.7	

River Birch - Sawtimber International 1/4 Scale

Number of Logs								
DBH	1-Log	2-Log	3-Log	4-Log	5-Log	# Trees	Volume	% of Total
12	1					1	0.1	2.8%
14	3					3	0.2	12.3%
16	2	1				3	0.4	20.4%
18	1					1	0.1	7.1%
22	1	1				2	0.6	30.0%
26		1				1	0.6	27.5%
Total	8	3				11	2.0	

JCM III, LLC - Pinegrove Road Tract

Timber Marketing & Management, Inc.

Cruise Date: Friday, August 14, 2020
 Owner's Name: Cabell Metts
 County/State: Cumberland County, VA

Sycamore - Sawtimber International 1/4 Scale

DBH	Number of Logs					# Trees	Volume	% of Total
	1-Log	2-Log	3-Log	4-Log	5-Log			
12	5					5	0.3	1.8%
14	4	4				8	0.9	5.6%
16	1	3	1			5	0.9	5.9%
18	1		2			3	0.8	5.1%
20		5	2			7	2.4	15.3%
22			1			1	0.5	3.3%
24	1	3	5			9	4.9	30.8%
26		2				2	1.1	7.0%
28		1	1			2	1.6	9.8%
32			2			2	2.4	15.3%
Total	12	18	14			44	15.9	

Willow Oak - Sawtimber International 1/4 Scale

DBH	Number of Logs					# Trees	Volume	% of Total
	1-Log	2-Log	3-Log	4-Log	5-Log			
12	8					8	0.4	5.2%
14	3	1				4	0.4	4.5%
16	4	4				8	1.2	14.1%
18	2	3				5	1.0	12.0%
20	3		1			4	1.0	11.3%
22	1	1	1			3	1.1	13.2%
24	1	1	1			3	1.4	16.1%
26		1				1	0.6	6.5%
28			1			1	0.9	10.5%
34	1					1	0.6	6.4%
Total	23	11	4			38	8.6	

Virginia Pine - Sawtimber International 1/4 Scale

DBH	Number of Logs					# Trees	Volume	% of Total
	1-Log	2-Log	3-Log	4-Log	5-Log			
10	79					79	2.8	12.9%
12	94	30	1			125	8.1	36.9%
14	27	18	5			50	5.7	25.9%
16	13	10	3			26	4.1	18.7%
18	1	1	1			3	0.7	3.3%
20	1	1				2	0.5	2.2%
Total	215	60	10			285	22.0	

White Oak - Sawtimber International 1/4 Scale

DBH	Number of Logs					# Trees	Volume	% of Total
	1-Log	2-Log	3-Log	4-Log	5-Log			
12	37					37	2.1	9.5%
14	13	25				38	4.6	21.1%
16	7	18				25	4.2	19.3%
18	2	6	1			9	2.1	9.7%
20	3	4				7	1.8	8.3%
22		8				8	3.1	14.2%
24		4				4	1.9	8.6%
28		1	1			2	1.6	7.1%
32	1					1	0.5	2.2%
Total	63	66	2			131	21.8	

JCM III, LLC - Pinegrove Road Tract

Timber Marketing & Management, Inc.

Cruise Date: Friday, August 14, 2020
Owner's Name: Cabell Metts
County/State: Cumberland County, VA

Sawtimber Volume by Timber Type

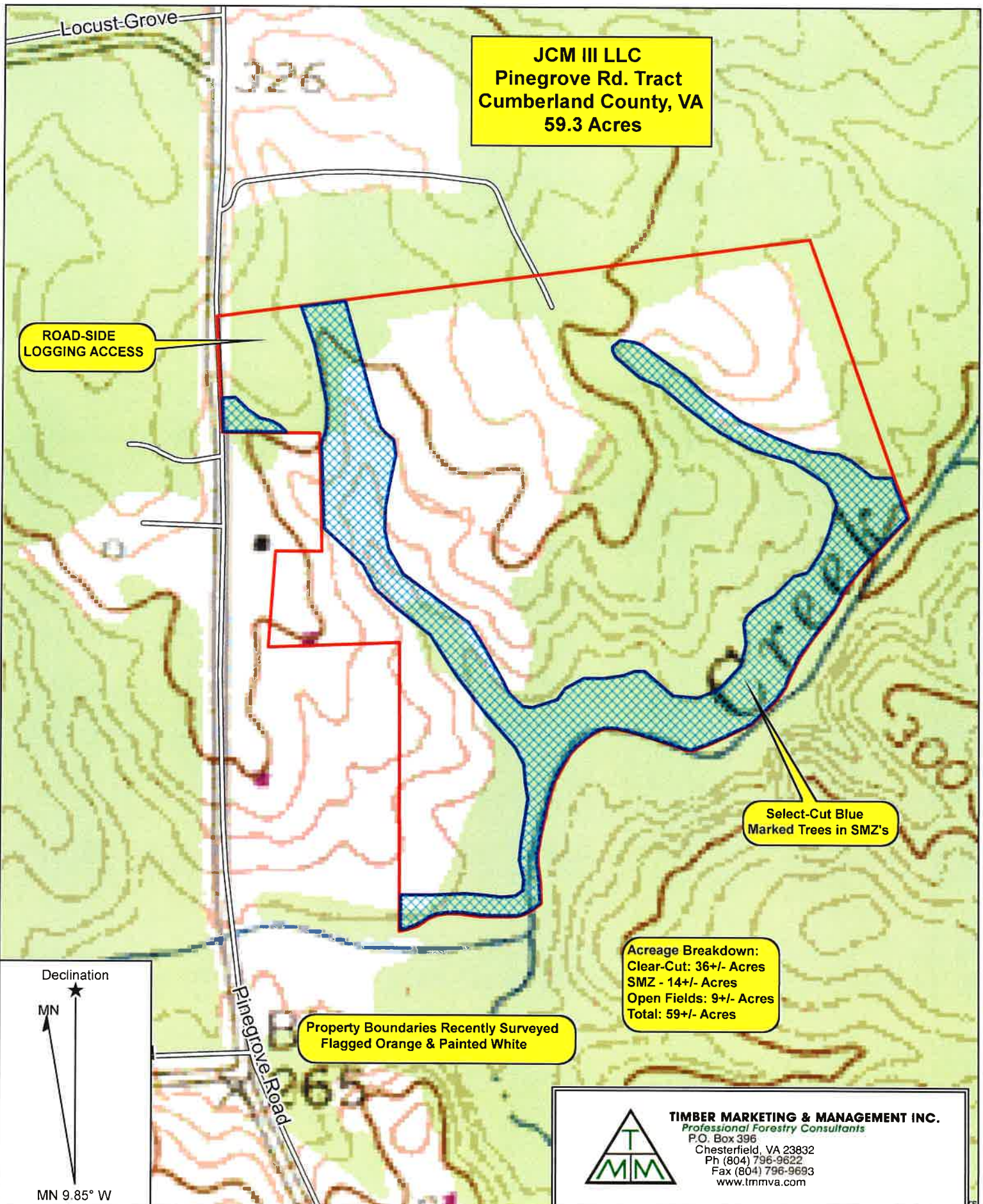
<u>Timber Type</u>	<u># Trees</u>	<u>Volume</u>	<u>Avg BF/Tree</u>	<u>% of Total</u>
Hardwood	1,085	290.2	267.5	85.0%
Pine	506	51.1	100.9	15.0%
Total	1,591	341.2	214.5	

Sawtimber Volume by DBH

<u>DBH</u>	<u># Trees</u>	<u>Volume</u>	<u>Avg BF/Tree</u>	<u>% of Total</u>
10	125	4.6	36.6	1.3%
12	391	26.4	67.5	7.7%
14	287	35.6	124.2	10.4%
16	266	50.4	189.4	14.8%
18	170	45.2	265.8	13.2%
20	123	42.7	347.4	12.5%
22	80	34.4	429.5	10.1%
24	68	37.7	554.4	11.0%
26	30	20.3	675.3	5.9%
28	24	18.4	765.5	5.4%
30	18	17.1	952.7	5.0%
32	7	6.7	956.0	2.0%
34	1	0.6	550.0	0.2%
38	1	1.3	1,256.0	0.4%
Total	1,591	341.2	214.5	

Sawtimber Volume by Species

<u>Species</u>	<u># Trees</u>	<u>Volume</u>	<u>Avg BF/Tree</u>	<u>% of Total</u>
Beech	7	0.8	110.1	0.2%
Black Walnut	37	8.2	221.8	2.4%
Cedar	1	0.1	83.0	0.0%
Elm	6	1.0	170.3	0.3%
Gum	197	38.8	196.9	11.4%
Hackberry	1	0.4	387.0	0.1%
Hickory	36	5.6	155.2	1.6%
Loblolly/Shortleaf Pine	220	28.9	131.5	8.5%
Maple	29	4.2	144.7	1.2%
Northern Red Oak	39	13.4	344.5	3.9%
Poplar	392	143.8	366.8	42.1%
Red Oak	117	25.7	219.9	7.5%
River Birch	11	2.0	184.5	0.6%
Sycamore	44	15.9	360.8	4.7%
Virginia Pine	285	22.0	77.3	6.5%
White Oak	131	21.8	166.5	6.4%
Willow Oak	38	8.6	225.7	2.5%
Total	1,591	341.2	214.5	



JCM III LLC
Pinegrove Rd. Tract
Cumberland County, VA
59.3 Acres

ROAD-SIDE LOGGING ACCESS

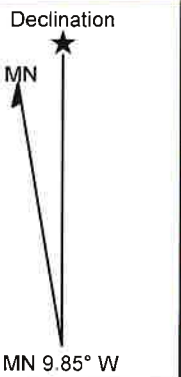
Select-Cut Blue Marked Trees in SMZ's

Acreage Breakdown:
Clear-Cut: 36+/- Acres
SMZ - 14+/- Acres
Open Fields: 9+/- Acres
Total: 59+/- Acres

Property Boundaries Recently Surveyed
Flagged Orange & Painted White

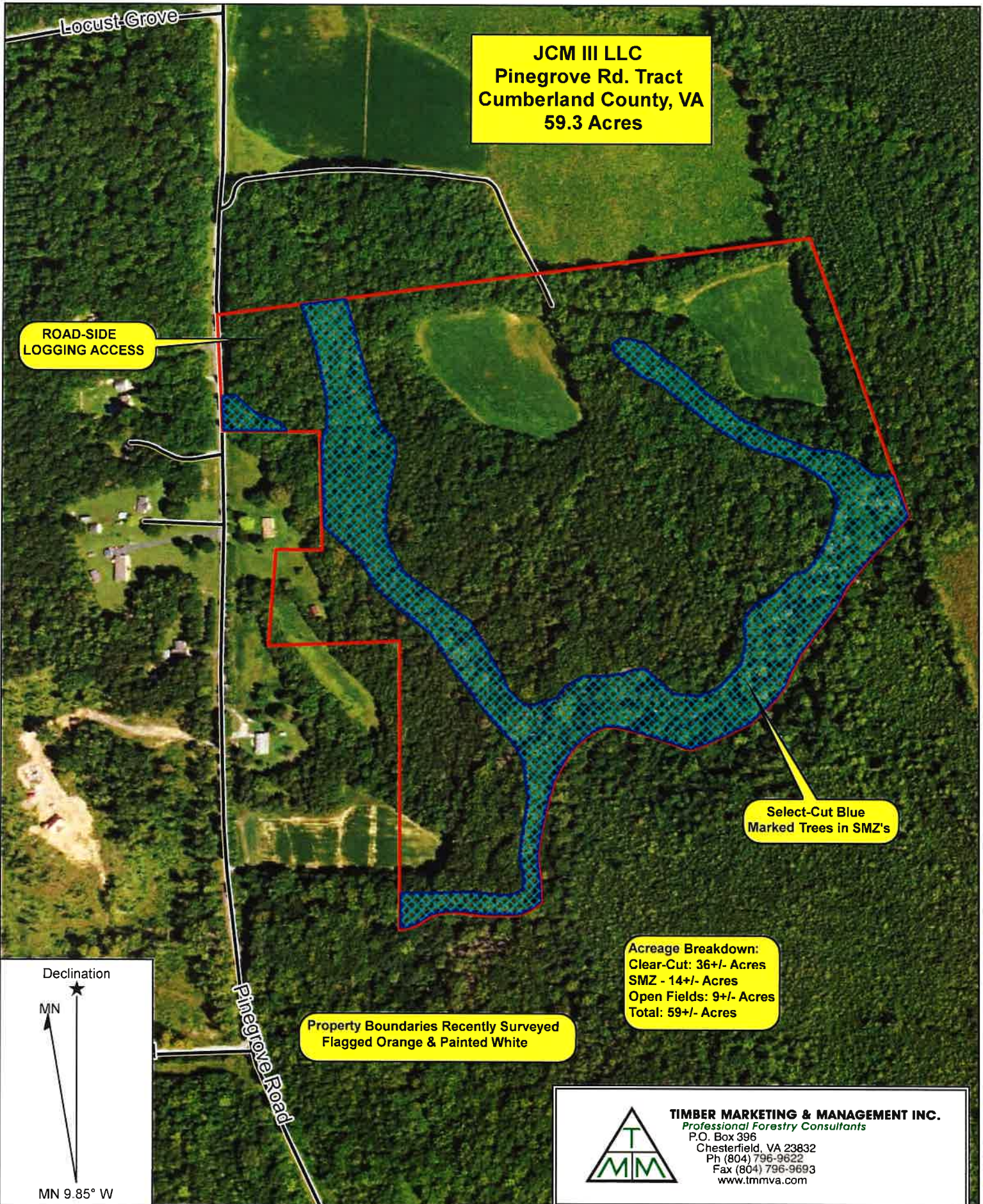


TIMBER MARKETING & MANAGEMENT INC.
Professional Forestry Consultants
 P.O. Box 396
 Chesterfield, VA 23832
 Ph (804) 796-9622
 Fax (804) 796-9693
 www.tmmva.com



Name: JCM III LLC - PINEGROVE RD TRACT
 Date: 07/23/21
 Scale: 1 inch = 376 ft.

Location: 037° 34' 14.1342" N, 078° 07' 59.9732" W
 36+/- Acre Clear-Cut



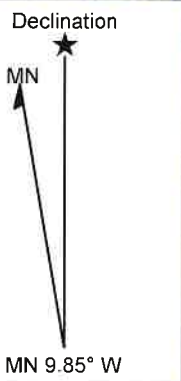
JCM III LLC
Pinegrove Rd. Tract
Cumberland County, VA
59.3 Acres

ROAD-SIDE LOGGING ACCESS

Select-Cut Blue Marked Trees in SMZ's

Property Boundaries Recently Surveyed Flagged Orange & Painted White

Acreage Breakdown:
Clear-Cut: 36+/- Acres
SMZ - 14+/- Acres
Open Fields: 9+/- Acres
Total: 59+/- Acres



TIMBER MARKETING & MANAGEMENT INC.
Professional Forestry Consultants
 P.O. Box 396
 Chesterfield, VA 23832
 Ph (804) 796-9622
 Fax (804) 796-9693
 www.tmmva.com

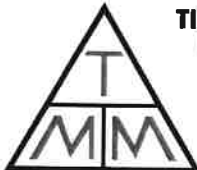
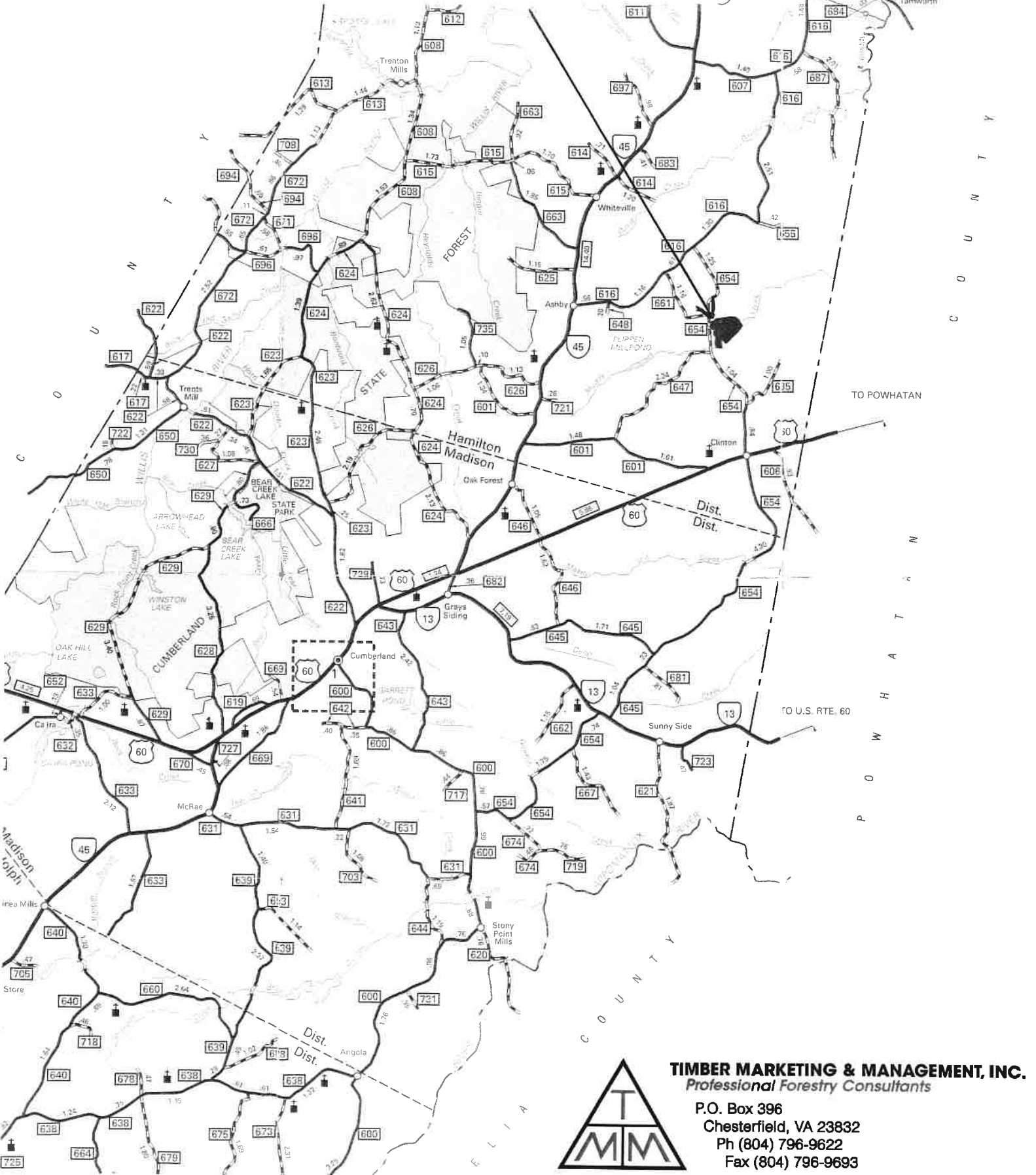
Name: JCM III LLC - PINEGROVE RD TRACT
 Date: 07/23/21
 Scale: 1 inch = 376 ft.

Location: 037° 34' 14.1342" N, 078° 07' 59.9732" W
 36+/- Acre Clear-Cut

JCM III LLC

PINEGROVE RD TRACT

CUMBERLAND COUNTY, VA



TIMBER MARKETING & MANAGEMENT, INC.
Professional Forestry Consultants

P.O. Box 396
 Chesterfield, VA 23832
 Ph (804) 796-9622
 Fax (804) 796-9693