

**TIMBER MARKETING & MANAGEMENT INC.***Professional Forestry Consultants*

P.O. Box 396

Chesterfield, VA 23832

Ph (804) 796-9622

Fax (804) 796-9693

www.tmmva.com

Sale Date:	November 11, 2021
Time:	11:00 a.m.
Day:	Thursday
Total Vol./Acre:	13,081 B. F.
Pine Vol/Tree:	159 B. F.
Hdwd. Vol/Tree:	205 B. F.

CLEAR- CUT SALE EXCELLENT QUALITY PINE & HARDWOOD SAWTIMBER

Having been employed by **Karen S. Shelton Trust** we solicit bids on all merchantable timber on **33.4 +/- acres (Clear Cut)** and on the blue marked timber only on **5.6 +/- acres (SMZ's)** in **Halifax County, Virginia** and as shown on the attached map.

We made a 5% plot cruise of the pulpwood-size trees to be harvested. Our estimate of their volume is:

<u>Pulpwood</u>	<u>Cords</u>	<u>Tons</u>
Pine	126	328
Soft Hardwood	31	81
Hard Hardwood	<u>17</u>	<u>44</u>
Total:	174	452

We made a 100% count of the sawtimber-size trees to be harvested. Our estimate of their volume is:

Sawtimber

Loblolly/Shortleaf Pine	417,800	Virginia Pine	3,500
White Oak	33,000	Hickory	3,200
Poplar	21,700	Maple	2,700
Red Oak	17,000	Elm	800
Gum	5,700	Cedar	500
Northern Red Oak	3,600	Hackberry	<u>500</u>

Total: 510,000 BF Int 1/4" Scale

The above volumes are not guaranteed; however, care was taken in the field to assemble the above tables. You should note how your utilization practices may vary from the above and make any necessary adjustments.

Conditions

1. The landowner assumes responsibility for compliance with the Virginia State Seed Tree Law.
2. A period of time of **2 years** will be allowed to cut and remove the timber.
3. Roads **must** be maintained and restored to their original condition upon completion of the logging. Any newly constructed roads and decks must be left in a graded condition and must be seeded upon completion of logging. Any newly constructed haul roads, skid roads and log decks and all logging operations must be in accordance with the guidelines set out in the **Best Management Practices Manual** of the Virginia Department of Forestry.
4. No tops or laps will be allowed to remain in the streams, fields, buffers or over cutting boundaries. They must be pulled back immediately.
5. Only the blue marked trees are to be cut from Streamside Management Zones.
6. No logging will be permitted during excessively wet weather conditions as determined by Timber Marketing & Management, Inc. If logging is halted due to weather conditions, then an extension of time equal to the time lost will be granted.
7. A **\$2,500.00** performance bond will be paid at closing and held by Timber Marketing & Management, Inc. to insure compliance with all BMP requirements, road maintenance and conditions of the Timber Purchase Contract.
8. The key to the blue Timber Marketing & Management, Inc. lock is hanging on the left post at the end of the state maintenance road.

Only sealed bids will be accepted and owners reserve the right to reject any or all bids. BIDS SHOULD BE SUBMITTED PRIOR TO THE TIME OF BID OPENING AND CAN BE SUBMITTED VIA: Mail to: Timber Marketing & Management, Inc. P. O. Box 396, Chesterfield, Virginia 23832 **OR** hand delivered to 9520 Ironbridge Road, Chesterfield, Virginia **OR** telephoned in to 804-796-9622 **OR** faxed to 804-796-9693 **OR** emailed to office@tmmva.com Bids must be made on a lump-sum basis and must be received at this address no later than the posted bid date and time as shown on the cover. Closing shall take place within 30 days of bid acceptance.

There will be no scheduled show trip of the tract; however, you may call and set an appointment or you may inspect the property at your own leisure.

An electronic copy of this sale notice, including maps and volumes, is available for download and viewing on our website at www.tmmva.com under the Timber Sale Notices section.

Sincerely,
Timber Marketing & Management, Inc.



Matt Sandman, Area Manager
434-808-2102 mobile
804-796-9622 office

Shelton Tract

Timber Marketing & Management, Inc.

Professional Forestry Consultants

P.O. Box 396

Chesterfield, VA 23832-0000

Phone: (804) 796-9622 • Fax: (804) 796-9693

Pulpwood Cruise: 5.0%

Sawtimber Cruise: 100.0%

Cruise Date: Monday, October 25, 2021
 Owner's Name: Shelton
 County/State: Halifax County, VA
 Acreage: 39+/-
 Cruise Type: Tree Count
 Harvest Type: Clear Cut
 Total BF/Acre: 13,081
 Pine Vol/Tree: 158.9
 Hardwood Vol/Tree: 205.4

Volume Legend:

- 1) Diameters shown in inches (DBH)
- 2) Logs measured in 16' increments
- 3) Sawtimber volumes are shown in thousands of board feet (MBF)
- 4) Volume scale used for each species of sawtimber is noted
- 5) Pulpwood volumes are shown in standard cords (128 cubic feet)

Comments:

Pulpwood

Standard Cord

		Wood Classification							
		Pine		Soft Hardwood		Hard Hardwood		Cedar	
DBH	# Trees	Volume	# Trees	Volume	# Trees	Volume	# Trees	Volume	
6	360	16	340	13	160	6			
8	480	48	120	9	40	3			
10	340	56	60	8	60	8			
12	20	5							
Total	1,200	126	520	31	260	17			

Cedar - Sawtimber

International 1/4 Scale

		Number of Logs							
DBH	1-Log	2-Log	3-Log	4-Log	5-Log	# Trees	Volume	% of Total	
14	1					1	0.1	15.7%	
16	1	1				2	0.3	57.1%	
18	1					1	0.1	27.2%	
Total	3	1				4	0.5		

Elm - Sawtimber

International 1/4 Scale

		Number of Logs							
DBH	1-Log	2-Log	3-Log	4-Log	5-Log	# Trees	Volume	% of Total	
12	2					2	0.1	13.3%	
14	1					1	0.1	9.8%	
16		1				1	0.2	22.5%	
18	1					1	0.1	17.1%	
20		1				1	0.3	37.2%	
Total	4	2				6	0.8		

Gum - Sawtimber

International 1/4 Scale

		Number of Logs							
DBH	1-Log	2-Log	3-Log	4-Log	5-Log	# Trees	Volume	% of Total	
12	4					4	0.2	3.9%	
14	3	4				7	0.8	14.3%	
16	1	7	1			9	1.7	29.8%	
18		1	4			5	1.6	27.9%	
20		1				1	0.3	5.5%	
22			2			2	1.1	18.5%	
Total	8	13	7			28	5.7		

Hackberry - Sawtimber

International 1/4 Scale

		Number of Logs							
DBH	1-Log	2-Log	3-Log	4-Log	5-Log	# Trees	Volume	% of Total	
12	1					1	0.1	10.2%	
14	1					1	0.1	15.1%	
18	1					1	0.1	26.2%	
24	1					1	0.3	48.5%	
Total	4					4	0.5		

Hickory - Sawtimber

International 1/4 Scale

		Number of Logs							
DBH	1-Log	2-Log	3-Log	4-Log	5-Log	# Trees	Volume	% of Total	
12	5					5	0.3	8.9%	
14	1	2				3	0.4	11.6%	
16	1	2	1			4	0.7	23.7%	
18	1	4				5	1.1	36.0%	
20		2				2	0.6	19.9%	
Total	8	10	1			19	3.2		

Loblolly Pine - Sawtimber

International 1/4 Scale

		Number of Logs							
DBH	1-Log	2-Log	3-Log	4-Log	5-Log	# Trees	Volume	% of Total	
10	257	88				345	14.4	3.5%	
12	40	279	620			939	102.3	24.5%	
14	4	59	619	124		806	150.6	36.0%	
16	2	25	251	97		375	98.8	23.7%	
18	1	4	76	25		106	36.7	8.8%	
20	1	7	8	3		19	7.3	1.8%	
22		2	6	2		10	5.2	1.2%	
24		2				2	0.9	0.2%	
26			1			1	0.8	0.2%	
28		1				1	0.7	0.2%	
Total	305	467	1,581	251		2,604	417.8		

Maple - Sawtimber

International 1/4 Scale

		Number of Logs							
DBH	1-Log	2-Log	3-Log	4-Log	5-Log	# Trees	Volume	% of Total	
12	3					3	0.2	6.2%	
14	6	3				9	0.9	34.0%	
16	4					4	0.4	16.5%	
18	2	2				4	0.8	29.0%	
22		1				1	0.4	14.3%	
Total	15	6				21	2.7		

Shelton Tract

Timber Marketing & Management, Inc.

Cruise Date: Monday, October 25, 2021
 Owner's Name: Shelton
 County/State: Halifax County, VA

Northern Red Oak - Sawtimber International 1/4 Scale

Number of Logs								
DBH	1-Log	2-Log	3-Log	4-Log	5-Log	# Trees	Volume	% of Total
14	1	1				2	0.2	6.2%
16		3				3	0.6	15.8%
18		2				2	0.5	13.7%
20		4	1			5	1.7	46.5%
24			1			1	0.6	17.8%
Total	1	10	2			13	3.6	

Poplar - Sawtimber International 1/4 Scale

Number of Logs								
DBH	1-Log	2-Log	3-Log	4-Log	5-Log	# Trees	Volume	% of Total
12	26					26	1.5	6.7%
14	2	23	4			29	4.2	19.1%
16	1	5	10			16	3.6	16.7%
18	2	4	11			17	5.0	22.9%
20		4	10			14	5.5	25.5%
22		1	3			4	2.0	9.1%
Total	31	37	38			106	21.7	

Red Oak - Sawtimber International 1/4 Scale

Number of Logs								
DBH	1-Log	2-Log	3-Log	4-Log	5-Log	# Trees	Volume	% of Total
12	15					15	0.8	4.9%
14	7	11				18	2.1	12.5%
16	12	5				17	2.3	13.5%
18	5	9				14	3.0	17.4%
20		3	3			6	2.2	13.1%
22		1	2			3	1.4	8.5%
24		1	1			2	1.1	6.6%
26	1	4				5	2.5	15.0%
28	1	1				2	1.0	6.0%
30	1					1	0.4	2.5%
Total	42	35	6			83	17.0	

Virginia Pine - Sawtimber International 1/4 Scale

Number of Logs								
DBH	1-Log	2-Log	3-Log	4-Log	5-Log	# Trees	Volume	% of Total
10	12					12	0.4	12.2%
12	19	6	2			27	1.9	52.4%
14	2	2				4	0.4	12.6%
16	1	1	1			3	0.6	15.8%
18		1				1	0.2	7.0%
Total	34	10	3			47	3.5	

White Oak - Sawtimber International 1/4 Scale

Number of Logs								
DBH	1-Log	2-Log	3-Log	4-Log	5-Log	# Trees	Volume	% of Total
12	15					15	0.8	2.5%
14	21	16				37	4.0	12.1%
16	3	18				21	3.8	11.4%
18	6	25	3			34	8.1	24.4%
20	5	15	2			22	6.5	19.6%
22		12	5			17	7.3	22.0%
24		1	1			2	1.1	3.4%
30		2				2	1.5	4.6%
Total	50	89	11			150	33.0	

Shelton Tract

Timber Marketing & Management, Inc.

Cruise Date: Monday, October 25, 2021
Owner's Name: Shelton
County/State: Halifax County, VA

Sawtimber Volume by Timber Type

<u>Timber Type</u>	<u># Trees</u>	<u>Volume</u>	<u>Avg BF/Tree</u>	<u>% of Total</u>
Hardwood	430	88.3	205.4	17.3%
Pine	2,655	421.8	158.9	82.7%
Total	3,085	510.2	165.4	

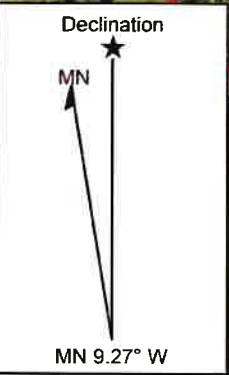
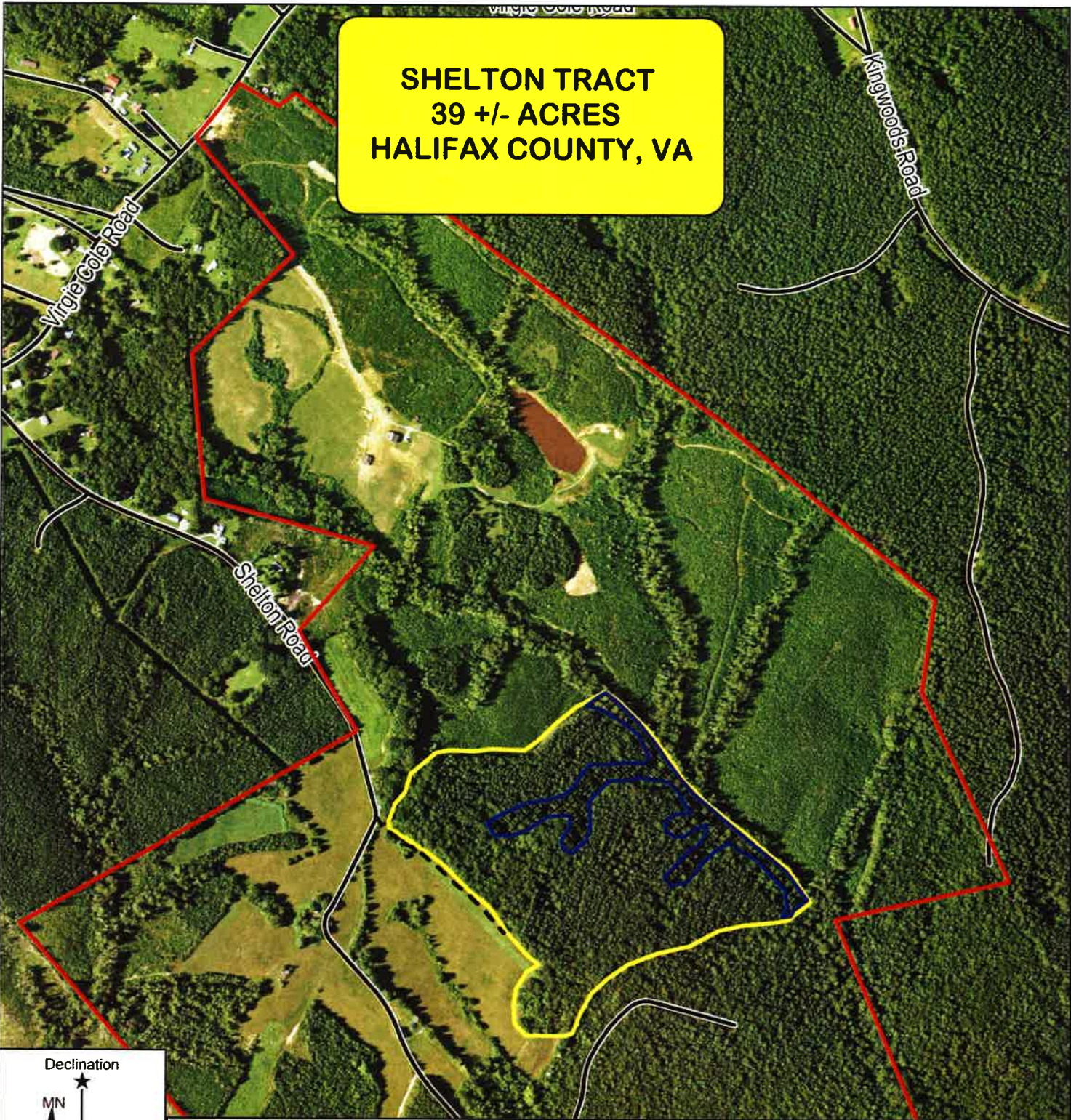
Sawtimber Volume by DBH

<u>DBH</u>	<u># Trees</u>	<u>Volume</u>	<u>Avg BF/Tree</u>	<u>% of Total</u>
10	357	14.9	41.7	2.9%
12	1,037	108.1	104.3	21.2%
14	918	163.9	178.5	32.1%
16	455	113.0	248.4	22.2%
18	191	57.4	300.6	11.3%
20	70	24.5	349.8	4.8%
22	37	17.4	469.2	3.4%
24	8	4.1	509.3	0.8%
26	6	3.3	552.3	0.6%
28	3	1.7	558.3	0.3%
30	3	1.9	646.7	0.4%
Total	3,085	510.2	165.4	

Sawtimber Volume by Species

<u>Species</u>	<u># Trees</u>	<u>Volume</u>	<u>Avg BF/Tree</u>	<u>% of Total</u>
Cedar	4	0.5	132.3	0.1%
Elm	6	0.8	140.5	0.2%
Gum	28	5.7	203.5	1.1%
Hackberry	4	0.5	137.3	0.1%
Hickory	19	3.2	166.2	0.6%
Loblolly Pine	2,604	417.8	160.4	81.9%
Maple	21	2.7	129.0	0.5%
Northern Red Oak	13	3.6	278.2	0.7%
Poplar	106	21.7	204.8	4.3%
Red Oak	83	17.0	204.7	3.3%
Virginia Pine	47	3.5	75.4	0.7%
White Oak	150	33.0	220.3	6.5%
Total	3,085	510.2	165.4	

**SHELTON TRACT
39 +/- ACRES
HALIFAX COUNTY, VA**



- Property Boundaries
- Harvest Area
- Stream Buffers
- - - Existing Road

**KEY TO BLUE TMM LOCK @ END OF STATE
MAINTENANCE ON LEFT HAND POST**

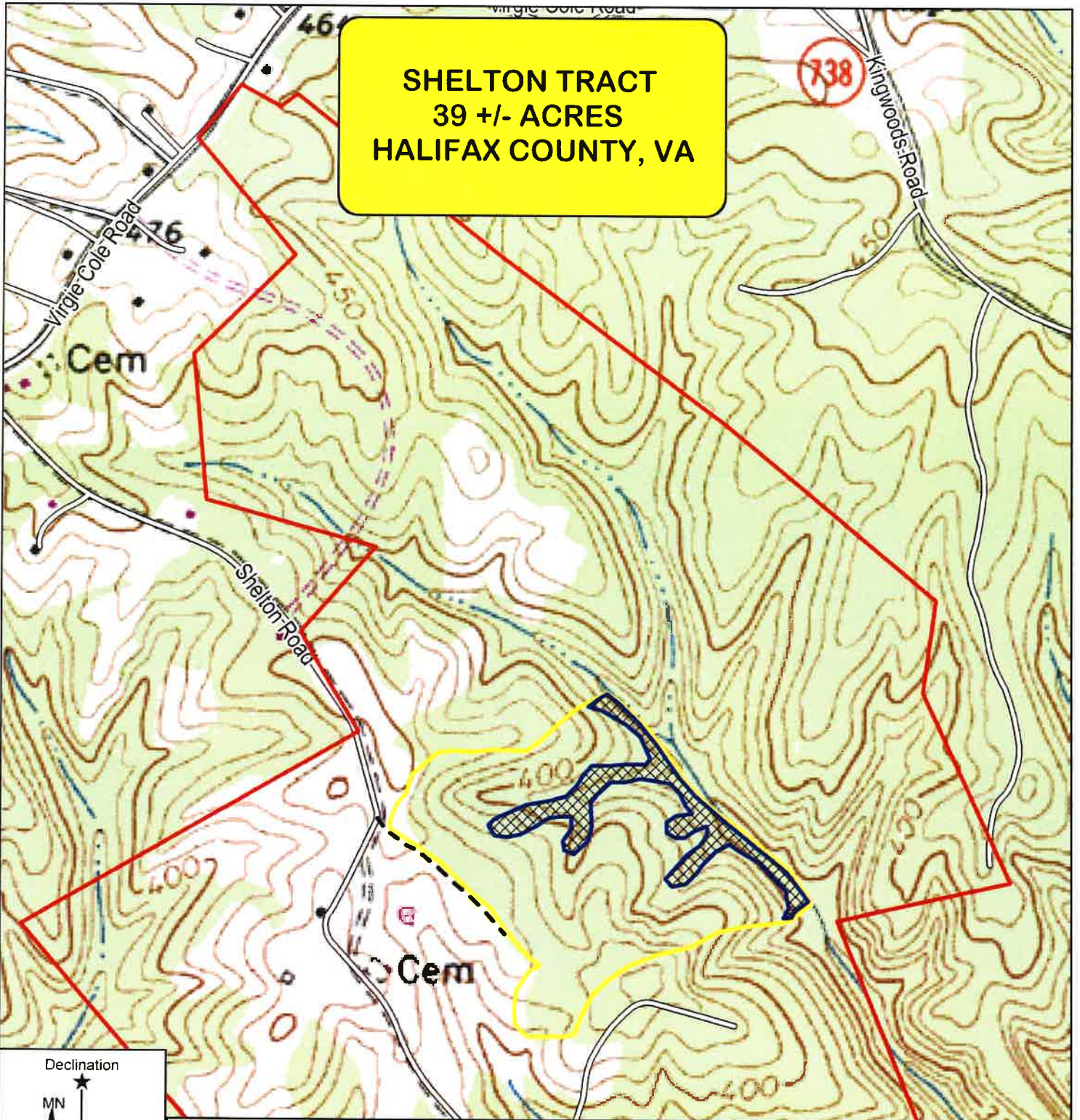


TIMBER MARKETING & MANAGEMENT INC.
Professional Forestry Consultants
 P.O. Box 396
 Chesterfield, VA 23832
 Ph (804) 796-9622
 Fax (804) 796-9693
www.tmmva.com

Name: Shelton Tract
 Date: October 22, 2021
 Scale: 1 inch = 660 ft.

Location: Halifax County, VA

**SHELTON TRACT
39 +/- ACRES
HALIFAX COUNTY, VA**



Declination

MN



MN 9.27° W

- Property Boundaries
- Harvest Area
- Stream Buffers
- - - Existing Road

KEY TO BLUE TMM LOCK @ END OF STATE
MAINTENANCE ON LEFT HAND POST

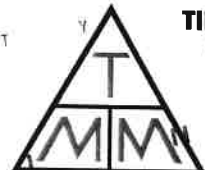
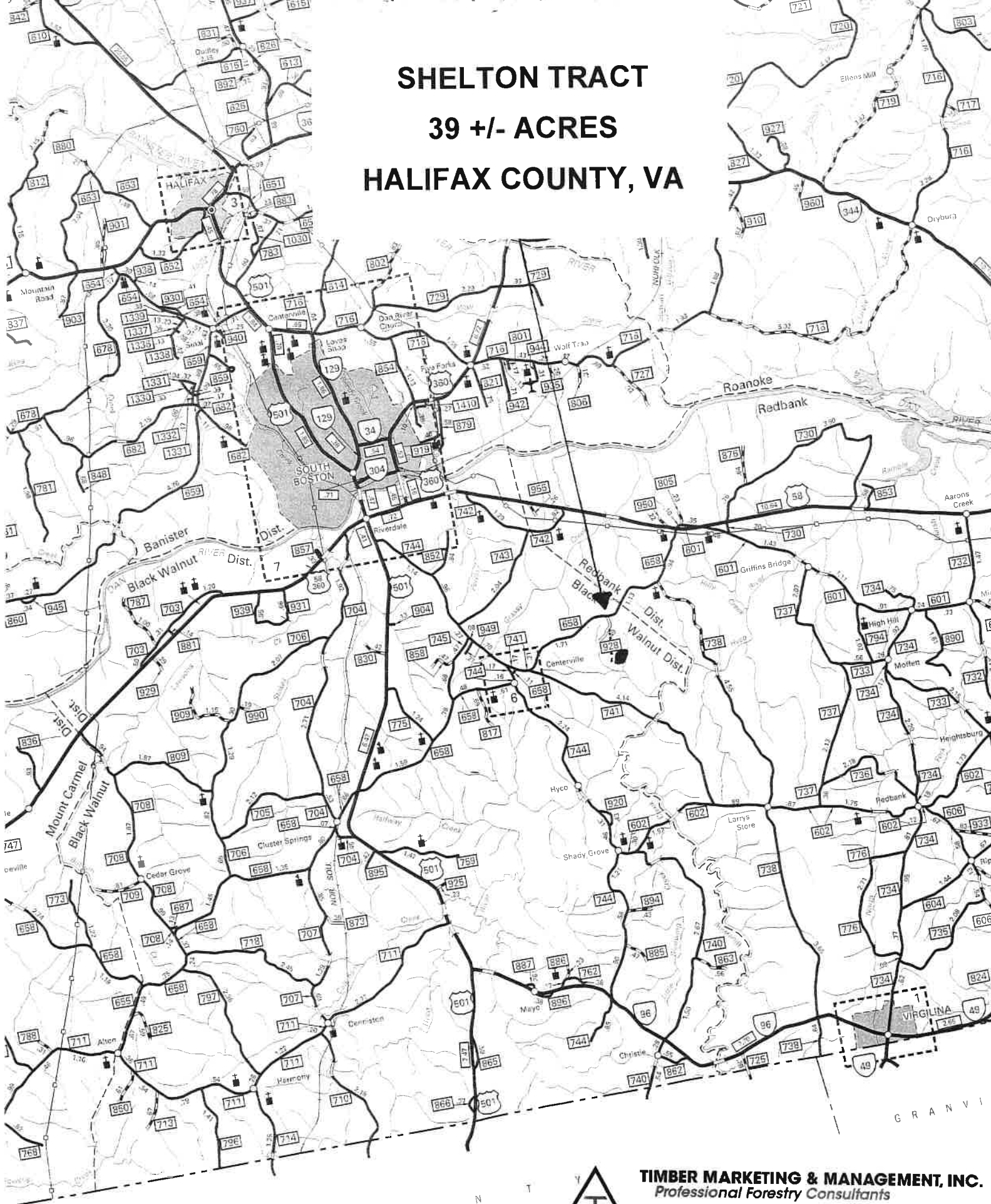


TIMBER MARKETING & MANAGEMENT INC.
Professional Forestry Consultants
P.O. Box 396
Chesterfield, VA 23832
Ph (804) 796-9622
Fax (804) 796-9693
www.tmmva.com

Name: Shelton Tract
Date: October 22, 2021
Scale: 1 inch = 660 ft.

Location: Halifax County, VA

SHELTON TRACT
39 +/- ACRES
HALIFAX COUNTY, VA



TIMBER MARKETING & MANAGEMENT, INC.
Professional Forestry Consultants

P.O. Box 396
Chesterfield, VA 23832
Ph (804) 796-9622
Fax (804) 796-9693