

**TIMBER MARKETING & MANAGEMENT INC.**

*Professional Forestry Consultants*

P.O. Box 396  
 Chesterfield, VA 23832  
 Ph (804) 796-9622  
 Fax (804) 796-9693  
 www.tmmva.com

<b>TIMBER FOR SALE by Negotiated Sale</b>		
County:	King William County VA	
Acres:	37 +/-	
	Main Block	Island Block
Total Vol./Acre:	4,235 B.F.	4,338 B.F.
Pine Vol/Tree:	302 B.F.	322 B.F.
Hdwd. Vol/Tree:	405 B.F.	419 B.F.
Sale Type:	Negotiated Sale	

**TIMBER FOR SALE  
SELECTIVE HARVEST**

Having been employed by **Bryan Spangler** we offer for sale the marked timber only **37 +/- acres** in **King William County, Virginia** and shown as the selective harvest on the attached map.

This timber is being offered on a negotiated sale basis. This is not a sealed bid sale. There will be no scheduled show trip of the tract; however, you may call and set an appointment or you may inspect the property at your own leisure.

**VOLUME SUMMARY**

	<b>Main Block</b>	<b>Island Block</b>	<b>TOTAL</b>
	<b>34 +/-</b>	<b>3 +/-</b>	<b>37 +/-</b>
	<b><u>MBF</u></b>	<b><u>MBF</u></b>	<b><u>MBF</u></b>
<b><u>Sawtimber Volume</u></b>			
Loblolly Pine	82.9	1.3	84.2
Poplar	26.3	2.1	28.4
White Oak	19.8	0.8	20.6
Red Oak	4.5	5.1	9.6
Northern Red Oak	5.2	2.6	7.8
Hickory	4.3	1.2	5.5
Gum	0.7	0.0	0.7
Virginia Pine	0.3	0.0	0.3
	<hr/>	<hr/>	<hr/>
	144.0	13.1	157.1
			<b>Total MBF</b>

If you are interested in this tract of timber please feel free to contact us by phone or email and we will be happy to discuss the tract with you in more detail.

Sincerely,  
 Timber Marketing & Management, Inc.

*Marvin Williams*  
 Marvin Williams, Area Manager  
 804-796-9622 Office  
 804-338-8458 Mobile

## Spangler Tract - Main Block

### Timber Marketing & Management, Inc.

Professional Forestry Consultants

P.O. Box 396

Chesterfield, VA 23832-0000

Phone: (804) 796-9622 • Fax: (804) 796-9693

Sawtimber Cruise: 100.0%

Cruise Date: Thursday, July 27, 2023  
 Owner's Name: Spangler  
 County/State: King William County, VA  
 Acreage: 34+/-  
 Cruise Type: Tree Count  
 Harvest Type: Select Cut  
 Total BF/Acre: 4,235  
 Pine Vol/Tree: 301.6  
 Hardwood Vol/Tree: 405.1

#### Volume Legend:

- 1) Diameters shown in inches (DBH)
- 2) Logs measured in 16' increments
- 3) Sawtimber volumes are shown in thousands of board feet (MBF)
- 4) Volume scale used for each species of sawtimber is noted
- 5) Pulpwood volumes are shown in standard cords (128 cubic feet)

#### Comments:

#### Gum - Sawtimber International 1/4 Scale

DBH	Number of Logs					# Trees	Volume	% of Total
	1-Log	2-Log	3-Log	4-Log	5-Log			
16		1				1	0.2	27.7%
18		2				2	0.5	72.3%
<b>Total</b>		<b>3</b>				<b>3</b>	<b>0.7</b>	

#### Hickory - Sawtimber International 1/4 Scale

DBH	Number of Logs					# Trees	Volume	% of Total
	1-Log	2-Log	3-Log	4-Log	5-Log			
18	1	3				4	0.9	20.7%
20		3				3	0.9	21.9%
22	1	3	1			5	1.9	44.4%
26		1				1	0.6	13.0%
<b>Total</b>	<b>2</b>	<b>10</b>	<b>1</b>			<b>13</b>	<b>4.3</b>	

#### Loblolly Pine - Sawtimber International 1/4 Scale

DBH	Number of Logs					# Trees	Volume	% of Total
	1-Log	2-Log	3-Log	4-Log	5-Log			
12	4	11	16			31	3.2	3.8%
14	1	17	24			42	6.9	8.4%
16	1	12	46	1		60	14.5	17.5%
18	1	18	34	1		54	16.4	19.8%
20		7	38			45	18.4	22.2%
22		7	17			24	11.7	14.1%
24		2	11			13	8.0	9.7%
26		1	3			4	2.9	3.4%
28			1			1	0.9	1.1%
<b>Total</b>	<b>7</b>	<b>75</b>	<b>190</b>	<b>2</b>		<b>274</b>	<b>82.9</b>	

#### Northern Red Oak - Sawtimber International 1/4 Scale

DBH	Number of Logs					# Trees	Volume	% of Total
	1-Log	2-Log	3-Log	4-Log	5-Log			
18	2	4				6	1.3	24.6%
20	1	1				2	0.5	9.5%
22		5				5	1.9	37.2%
24		2				2	0.9	18.0%
26		1				1	0.6	10.7%
<b>Total</b>	<b>3</b>	<b>13</b>				<b>16</b>	<b>5.2</b>	

#### Poplar - Sawtimber International 1/4 Scale

DBH	Number of Logs					# Trees	Volume	% of Total
	1-Log	2-Log	3-Log	4-Log	5-Log			
16		2				2	0.4	1.4%
18		3	2			5	1.4	5.4%
20	1	2	13			16	6.4	24.1%
22		10	7			17	7.6	28.7%
24		4	4			8	4.5	16.9%
26		2	3			5	3.4	13.0%
28		1				1	0.7	2.5%
30			2			2	2.1	8.0%
<b>Total</b>	<b>1</b>	<b>24</b>	<b>31</b>			<b>56</b>	<b>26.3</b>	

#### Red Oak - Sawtimber International 1/4 Scale

DBH	Number of Logs					# Trees	Volume	% of Total
	1-Log	2-Log	3-Log	4-Log	5-Log			
18			3			3	1.0	22.6%
20		2				2	0.6	14.1%
22		2				2	0.8	17.3%
24		2				2	0.9	21.0%
36		1				1	1.1	25.1%
<b>Total</b>		<b>7</b>	<b>3</b>			<b>10</b>	<b>4.5</b>	

#### Virginia Pine - Sawtimber International 1/4 Scale

DBH	Number of Logs					# Trees	Volume	% of Total
	1-Log	2-Log	3-Log	4-Log	5-Log			
14	1					1	0.1	25.1%
18		1				1	0.2	74.9%
<b>Total</b>	<b>1</b>	<b>1</b>				<b>2</b>	<b>0.3</b>	

## Spangler Tract - Main Block

**Timber Marketing & Management, Inc.**

Cruise Date: Thursday, July 27, 2023  
 Owner's Name: Spangler  
 County/State: King William County, VA

### White Oak - Sawtimber International 1/4 Scale

DBH	Number of Logs					# Trees	Volume	% of Total
	1-Log	2-Log	3-Log	4-Log	5-Log			
18	1	11	1			13	3.2	16.2%
20	1	12	1			14	4.4	22.1%
22	1	8	2			11	4.4	22.1%
24	1	4	5			10	5.4	27.1%
26		3	1			4	2.4	12.4%
<b>Total</b>	<b>4</b>	<b>38</b>	<b>10</b>			<b>52</b>	<b>19.8</b>	

### Sawtimber Volume by Timber Type

Timber Type	# Trees	Volume	Avg BF/Tree	% of Total
Hardwood	150	60.8	405.1	42.2%
Pine	276	83.2	301.6	57.8%
<b>Total</b>	<b>426</b>	<b>144.0</b>	<b>338.0</b>	

### Sawtimber Volume by DBH

DBH	# Trees	Volume	Avg BF/Tree	% of Total
12	31	3.2	101.8	2.2%
14	43	7.0	163.4	4.9%
16	63	15.0	238.8	10.4%
18	88	25.0	283.8	17.3%
20	82	31.2	380.8	21.7%
22	64	28.2	441.3	19.6%
24	35	19.7	563.2	13.7%
26	15	9.8	655.5	6.8%
28	2	1.6	779.0	1.1%
30	2	2.1	1,050.0	1.5%
36	1	1.1	1,121.0	0.8%
<b>Total</b>	<b>426</b>	<b>144.0</b>	<b>338.0</b>	

### Sawtimber Volume by Species

Species	# Trees	Volume	Avg BF/Tree	% of Total
Gum	3	0.7	228.7	0.5%
Hickory	13	4.3	330.6	3.0%
Loblolly Pine	274	82.9	302.6	57.6%
Northern Red Oak	16	5.2	325.4	3.6%
Poplar	56	26.3	470.4	18.3%
Red Oak	10	4.5	446.9	3.1%
Virginia Pine	2	0.3	165.5	0.2%
White Oak	52	19.8	380.0	13.7%
<b>Total</b>	<b>426</b>	<b>144.0</b>	<b>338.0</b>	

## Spangler Tract - Island Block

### Timber Marketing & Management, Inc.

Professional Forestry Consultants

P.O. Box 396

Chesterfield, VA 23832-0000

Phone: (804) 796-9622 • Fax: (804) 796-9693

Sawtimber Cruise: 100.0%

Cruise Date: Tuesday, September 19, 2023  
 Owner's Name: Spangler  
 County/State: King William County, VA  
 Acreage: 3+/-  
 Cruise Type: Tree Count  
 Harvest Type: Select Cut  
 Total BF/Acre: 4,338  
 Pine Vol/Tree: 322.0  
 Hardwood Vol/Tree: 418.8

#### Volume Legend:

- 1) Diameters shown in inches (DBH)
- 2) Logs measured in 16' increments
- 3) Sawtimber volumes are shown in thousands of board feet (MBF)
- 4) Volume scale used for each species of sawtimber is noted
- 5) Pulpwood volumes are shown in standard cords (128 cubic feet)

#### Comments:

#### Hickory - Sawtimber International 1/4 Scale

Number of Logs								
DBH	1-Log	2-Log	3-Log	4-Log	5-Log	# Trees	Volume	% of Total
18			1			1	0.3	28.2%
20			2			2	0.9	71.8%
<b>Total</b>			<b>3</b>			<b>3</b>	<b>1.2</b>	

#### Loblolly Pine - Sawtimber International 1/4 Scale

Number of Logs								
DBH	1-Log	2-Log	3-Log	4-Log	5-Log	# Trees	Volume	% of Total
14			1			1	0.2	14.4%
18		1				1	0.2	19.3%
20			2			2	0.9	66.3%
<b>Total</b>		<b>1</b>	<b>3</b>			<b>4</b>	<b>1.3</b>	

#### Northern Red Oak - Sawtimber International 1/4 Scale

Number of Logs								
DBH	1-Log	2-Log	3-Log	4-Log	5-Log	# Trees	Volume	% of Total
16		1				1	0.2	7.3%
18	1					1	0.1	5.5%
20		1				1	0.3	12.0%
22		1				1	0.4	14.8%
24		2	1			3	1.6	60.5%
<b>Total</b>	<b>1</b>	<b>5</b>	<b>1</b>			<b>7</b>	<b>2.6</b>	

#### Poplar - Sawtimber International 1/4 Scale

Number of Logs								
DBH	1-Log	2-Log	3-Log	4-Log	5-Log	# Trees	Volume	% of Total
18		1	3			4	1.3	60.7%
20			1			1	0.4	20.6%
22		1				1	0.4	18.7%
<b>Total</b>		<b>2</b>	<b>4</b>			<b>6</b>	<b>2.1</b>	

#### Red Oak - Sawtimber International 1/4 Scale

Number of Logs								
DBH	1-Log	2-Log	3-Log	4-Log	5-Log	# Trees	Volume	% of Total
20		1				1	0.3	6.2%
22		3	1			4	1.7	33.2%
24	1	2				3	1.2	23.7%
26		2	1			3	1.9	37.0%
<b>Total</b>	<b>1</b>	<b>8</b>	<b>2</b>			<b>11</b>	<b>5.1</b>	

#### White Oak - Sawtimber International 1/4 Scale

Number of Logs								
DBH	1-Log	2-Log	3-Log	4-Log	5-Log	# Trees	Volume	% of Total
30		1				1	0.8	100.0%
<b>Total</b>		<b>1</b>				<b>1</b>	<b>0.8</b>	

#### Sawtimber Volume by Timber Type

Timber Type	# Trees	Volume	Avg BF/Tree	% of Total
Hardwood	28	11.7	418.8	90.1%
Pine	4	1.3	322.0	9.9%
<b>Total</b>	<b>32</b>	<b>13.0</b>	<b>406.7</b>	

#### Sawtimber Volume by DBH

DBH	# Trees	Volume	Avg BF/Tree	% of Total
14	1	0.2	186.0	1.4%
16	1	0.2	190.0	1.5%
18	7	2.0	283.4	15.2%
20	7	2.8	394.7	21.2%
22	6	2.5	410.5	18.9%
24	6	2.8	464.3	21.4%
26	3	1.9	627.7	14.5%
30	1	0.8	758.0	5.8%
<b>Total</b>	<b>32</b>	<b>13.0</b>	<b>406.7</b>	

#### Sawtimber Volume by Species

Species	# Trees	Volume	Avg BF/Tree	% of Total
Hickory	3	1.2	396.7	9.1%
Loblolly Pine	4	1.3	322.0	9.9%
Northern Red Oak	7	2.6	373.9	20.1%
Poplar	6	2.1	345.0	15.9%
Red Oak	11	5.1	462.7	39.1%
White Oak	1	0.8	758.0	5.8%
<b>Total</b>	<b>32</b>	<b>13.0</b>	<b>406.7</b>	

**SPANGLER PROPERTY  
KING WILLIAM COUNTY, VA  
37 +/- ACRE SELECTIVE HARVEST**

2870 MT OLIVE CHOHOKE RD  
KING WILLIAM, VA 23086

LOGGING  
ACCESS

SELECTIVE  
HARVEST

Gravel  
Pit

Mount-Olive-Chochoke.Road  
632

Declination

MN

MN 10.49° W



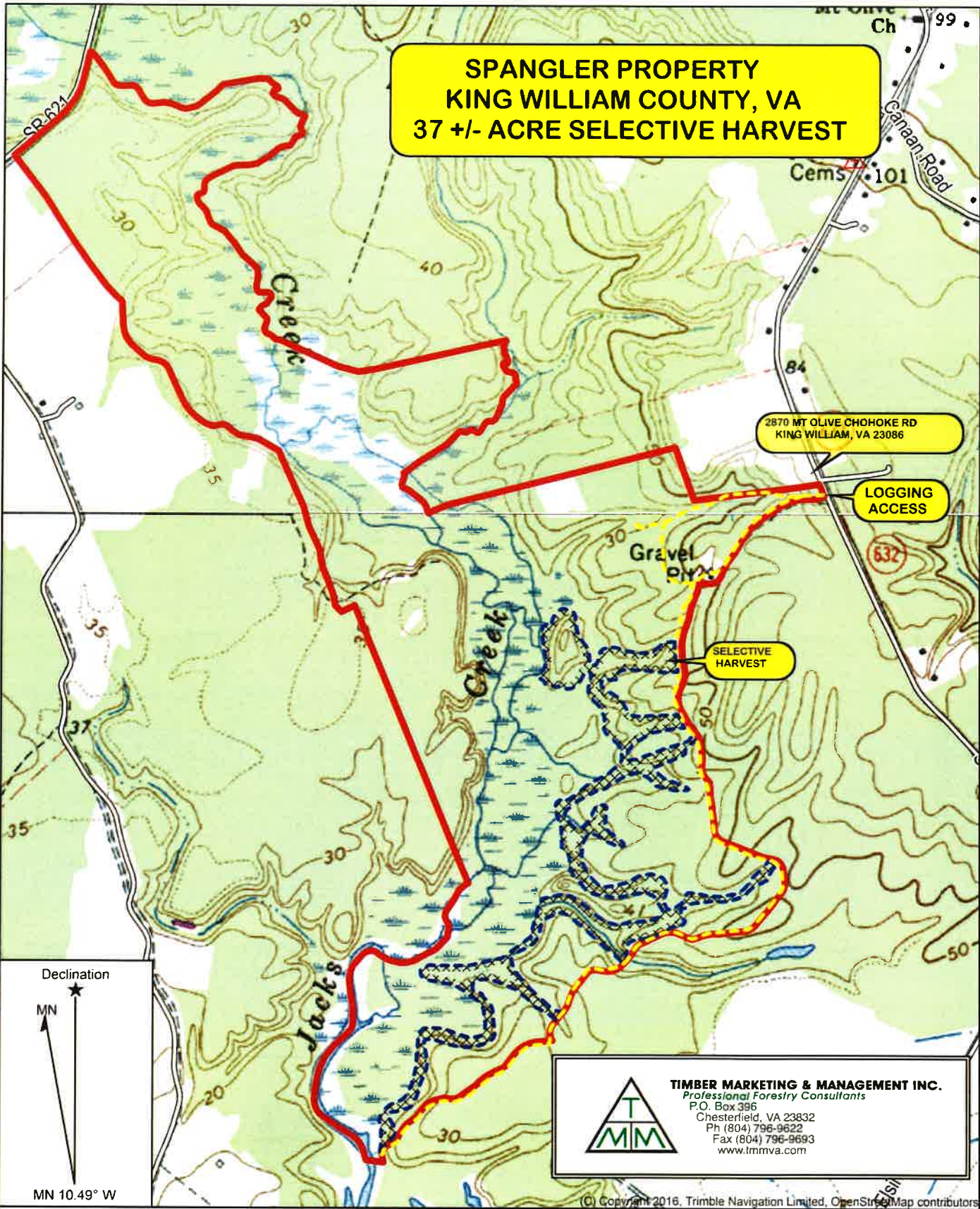
**TIMBER MARKETING & MANAGEMENT INC.**  
Professional Forestry Consultants  
P.O. Box 396  
Chesterfield, VA 23832  
Ph (804) 796-9622  
Fax (804) 796-9693  
www.tmmva.com

(C) Copyright 2016, Trimble Navigation Limited, OpenStreetMap contributors

Name: Spangler Property  
Date: 09/25/23  
Scale: 1 inch = 850 ft.

Location: King William County, VA  
37 +/- Acre Selective Harvest Outlined in Blue

**SPANGLER PROPERTY  
KING WILLIAM COUNTY, VA  
37 +/- ACRE SELECTIVE HARVEST**



Declination

MN

MN 10.49° W

 **TIMBER MARKETING & MANAGEMENT INC.**  
Professional Forestry Consultants  
P.O. Box 396  
Chesterfield, VA 23832  
Ph (804) 796-9622  
Fax (804) 796-9693  
www.tmmva.com

© Copyright 2016, Trimble Navigation Limited, OpenStreetMap contributors

Name: Spangler Property  
Date: 09/25/23  
Scale: 1 inch = 1,050 ft.

Location: King William County, VA  
37 +/- Acre Selective Harvest Outlined in Blue

**SPANGLER PROPERTY  
KING WILLIAM COUNTY, VA  
37 +/- ACRE SELECTIVE HARVEST**

2870 MT OLIVE CHOHOKE RD  
KING WILLIAM, VA 23086

**LOGGING  
ACCESS**

Mount Olive-Chochoke Road

**SELECTIVE  
HARVEST**

Mallory Creek

Declination

MN

MN 10.49° W



**TIMBER MARKETING & MANAGEMENT INC.**  
*Professional Forestry Consultants*  
P.O. Box 396  
Chesterfield, VA 23832  
Ph (804) 796-9622  
Fax (804) 796-9693  
www.tmmva.com

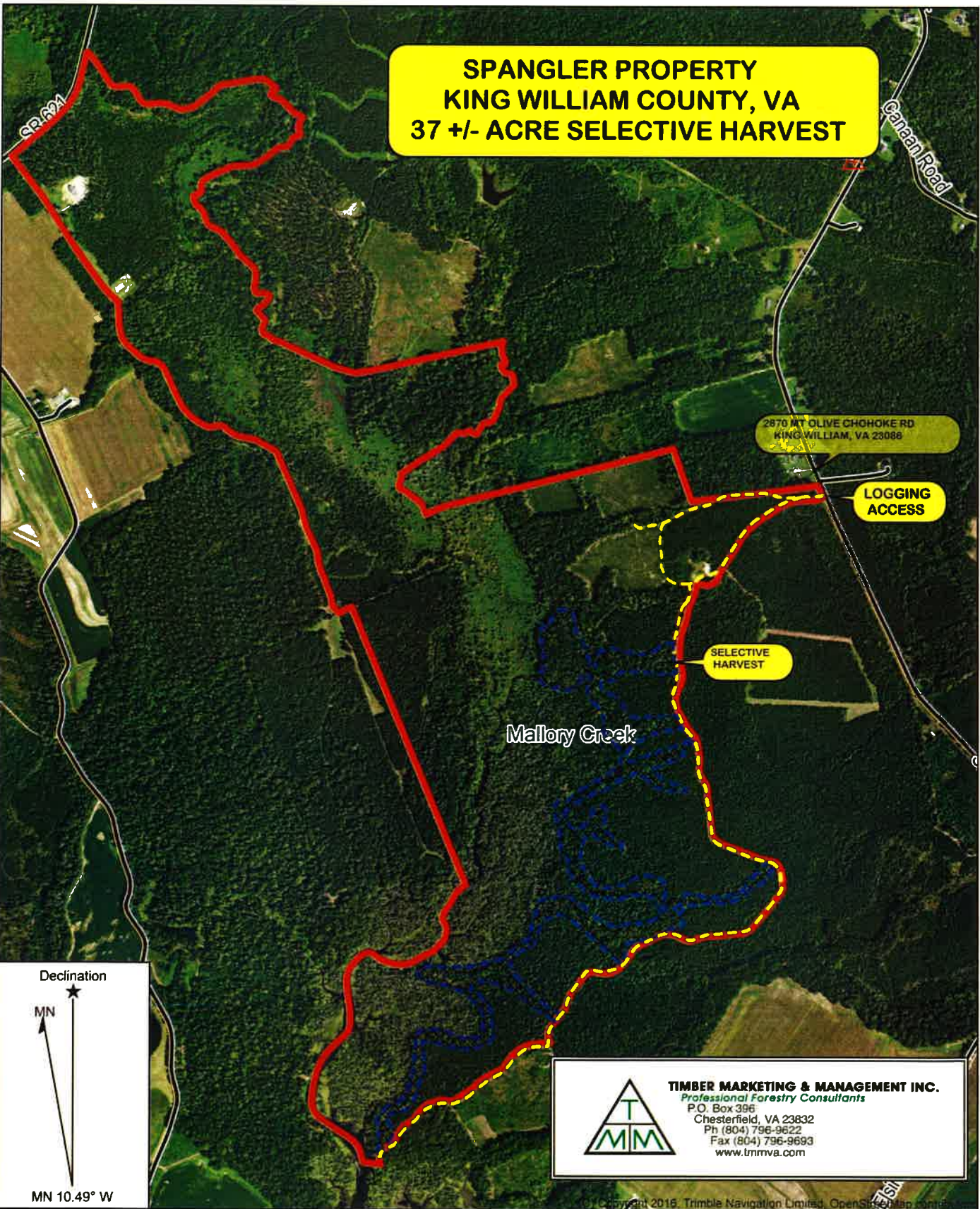
(C) Copyright 2016, Trimble Navigation Limited, OpenStreetMap contributors

Name: Spangler Property  
Date: 09/25/23  
Scale: 1 inch = 850 ft.

Location: King William County, VA  
37 +/- Acre Selective Harvest Outlined in Blue

(C) Copyright 2018, Trimble Navigation Limited

**SPANGLER PROPERTY  
KING WILLIAM COUNTY, VA  
37 +/- ACRE SELECTIVE HARVEST**



Declination  
MN  
MN 10.49° W

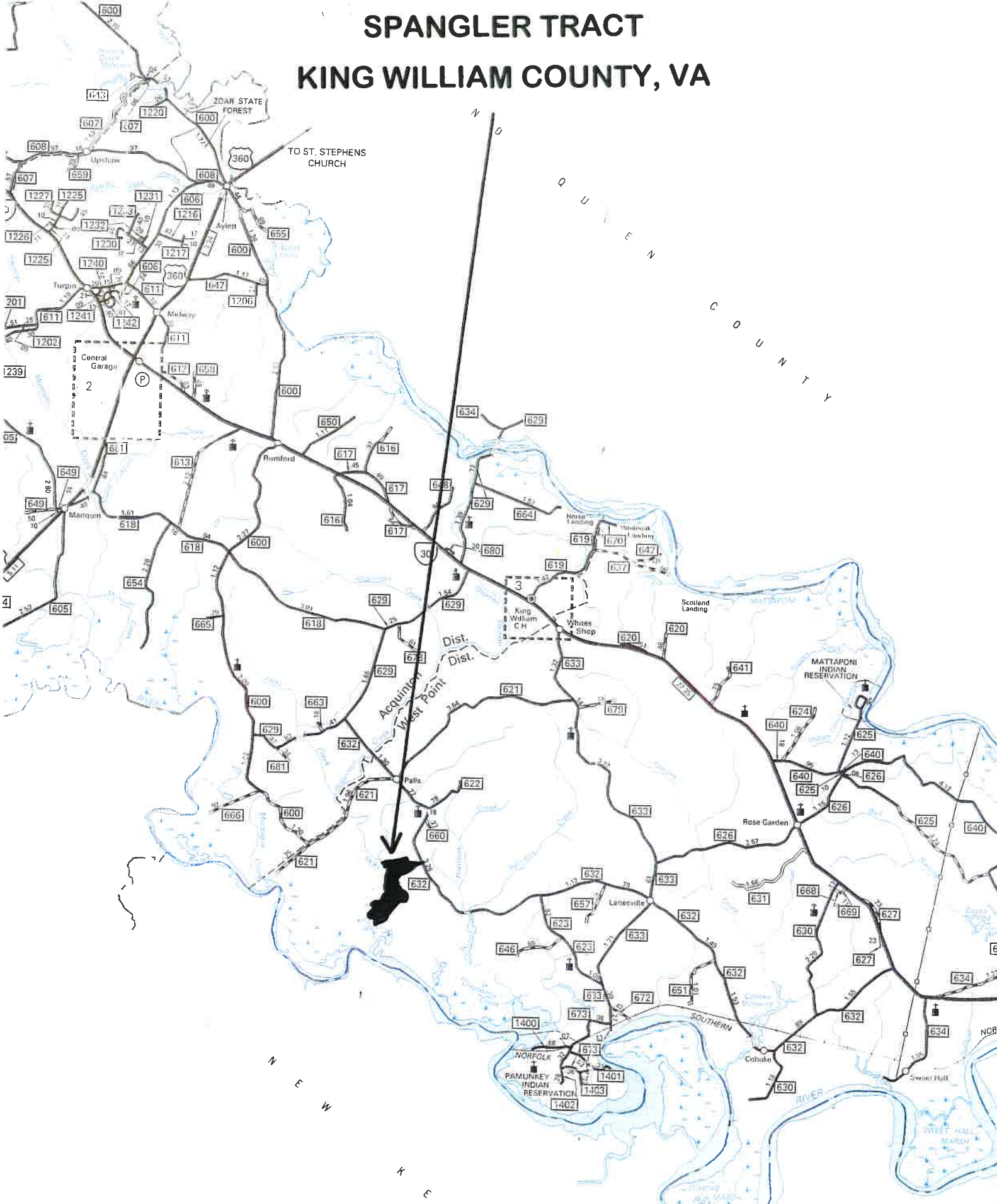
**TIMBER MARKETING & MANAGEMENT INC.**  
Professional Forestry Consultants  
P.O. Box 396  
Chesterfield, VA 23832  
Ph (804) 796-9622  
Fax (804) 796-9693  
www.tmmva.com

Name: Spangler Property  
Date: 09/25/23  
Scale: 1 inch = 1,050 ft.

Location: King William County, VA  
37 +/- Acre Selective Harvest Outlined in Blue



# SPANGLER TRACT KING WILLIAM COUNTY, VA



**TIMBER MARKETING & MANAGEMENT, INC.**  
*Professional Forestry Consultants*

P.O. Box 396  
Chesterfield, VA 23832  
Ph (804) 796-9622  
Fax (804) 796-9693