

TIMBER MARKETING & MANAGEMENT INC.

Professional Forestry Consultants

P.O. Box 396

Chesterfield, VA 23832

Ph (804) 796-9622

Fax (804) 796-9693

www.tmmva.com

Sale Date:	Oct. 14, 2021	Oct. 14, 2021
Time:	11:00 a.m.	11:00 a.m.
Day:	Thursday	Thursday
BLOCK:	A	B
Total Vol./Acre:	13,292 B.F.	11,025 B.F.
Lob Pine Vol/Tree:	168 B.F.	121 B.F.
Hdwd. Vol/Tree:	281 B.F.	135 B.F.

**CLEAR CUT SALE
LOBLOLLY PINE PLANTATION
WINTERTIME LOGGING**

Having been employed by **Bobby & Judy Woolfolk** we solicit bids on all merchantable timber on **42 +/- acres** in **Louisa County, Virginia** and as shown on the attached map.

We made a 10% plot cruise of the pulpwood trees to be harvested. Our estimate of their volume is:

	Block A	Block B	Total	Total
<u>Pulpwood</u>	<u>Cords</u>	<u>Cords</u>	<u>Cords</u>	<u>Tons</u>
Pine	4	42	46	120
Hard Hardwood	1	3	4	10
Pine Topwood Estimate:	-	-	<u>98</u>	<u>256</u>
			Total: 148	386

We have made a 10% cruise of Block A and a 100% tree count of Block B on the sawtimber-size trees to be harvested. Our estimate of their volume is:

	10% Cruise	100% Count	
<u>Sawtimber</u>	<u>Block A</u>	<u>Block B</u>	<u>Total</u>
Loblolly Pine	286,800	217,700	504,500
Poplar	5,600	900	6,500
White Oak	0	800	800
Beech	0	500	500
Red Oak	0	200	200
Hickory	0	200	200
Gum	<u>0</u>	<u>100</u>	<u>100</u>
	292,400	220,400	Total: 512,800 BF Int 1/4" Scale

The above volumes are not guaranteed; however, care was taken in the field to assemble the above tables. You should note how your utilization practices may vary from the above and make any necessary adjustments.

Conditions

1. The landowner assumes responsibility for compliance with the Virginia State Seed Tree Law.
2. A period of time of **18 months** will be allowed to cut and remove the timber.
3. Roads **must** be maintained and restored to their original condition upon completion of the logging. Any newly constructed roads and decks must be left in a graded condition and must be seeded upon completion of logging. Any newly constructed haul roads, skid roads and log decks and all logging operations must be in accordance with the guidelines set out in the **Best Management Practices Manual** of the Virginia Department of Forestry.
4. No tops or laps will be allowed to remain in the streams, fields, buffers or over cutting boundaries. They must be pulled back immediately.
5. Only the blue marked trees are to be cut from Streamside Management Zones.
6. No logging will be permitted during excessively wet weather conditions as determined by Timber Marketing & Management, Inc. If logging is halted due to weather conditions, then an extension of time equal to the time lost will be granted.
7. A **\$3,000.00** performance bond will be paid at closing and held by Timber Marketing & Management, Inc. to insure compliance with all BMP requirements, road maintenance and conditions of the Timber Purchase Contract.

Only sealed bids will be accepted and owners reserve the right to reject any or all bids. BIDS SHOULD BE SUBMITTED PRIOR TO THE TIME OF BID OPENING AND CAN BE SUBMITTED VIA: Mail to: Timber Marketing & Management, Inc. P. O. Box 396, Chesterfield, Virginia 23832 **OR** hand delivered to 9520 Ironbridge Road, Chesterfield, Virginia **OR** telephoned in to 804-796-9622 **OR** faxed to 804-796-9693 **OR** emailed to tmm4u@aol.com Bids must be made on a lump-sum basis and must be received at this address no later than the posted bid date and time as shown on the cover. Closing shall take place within 30 days of bid acceptance.

There will be no scheduled show trip of the tract; however, you may call and set an appointment or you may inspect the property at your own leisure.

An electronic copy of this sale notice, including maps and volumes, is available for download and viewing on our website at www.tmmva.com under the Timber Sale Notices section.

Sincerely,
Timber Marketing & Management, Inc.



Andrew J. Lindberg, Vice President
804-338-8436 mobile
804-796-9622 office

Woolfolk Tract - Block A

Timber Marketing & Management, Inc.

Professional Forestry Consultants

P.O. Box 396

Chesterfield, VA 23832-0000

Phone: (804) 796-9622 • Fax: (804) 796-9693

Pulpwood Cruise: 10.0%

Sawtimber Cruise: 10.0%

Cruise Date: Wednesday, July 14, 2021
 Owner's Name: Woolfolk
 County/State: Louisa County, VA
 Acreage: 22+/-
 Cruise Type: Plot Cruise
 Harvest Type: Clear Cut
 Total BF/Acre: 13,292
 Pine Vol/Tree: 167.7
 Hardwood Vol/Tree: 281.0

Volume Legend:

- 1) Diameters shown in inches (DBH)
- 2) Logs measured in 16' increments
- 3) Sawtimber volumes are shown in thousands of board feet (MBF)
- 4) Volume scale used for each species of sawtimber is noted
- 5) Pulpwood volumes are shown in standard cords (128 cubic feet)

Comments:

Pulpwood Standard Cord

		Wood Classification							
		Pine		Soft Hardwood		Hard Hardwood		Cedar	
DBH	# Trees	Volume	# Trees	Volume	# Trees	Volume	# Trees	Volume	
8	10	1			10	1			
10	20	3							
Total	30	4			10	1			

Loblolly Pine - Sawtimber International 1/4 Scale

		Number of Logs						
DBH	1-Log	2-Log	3-Log	4-Log	5-Log	# Trees	Volume	% of Total
10	60	10				70	2.7	1.0%
12	40	260	70			370	34.6	12.1%
14		290	590			880	150.6	52.5%
16		50	300			350	86.3	30.1%
18		10	30			40	12.6	4.4%
Total	100	620	990			1,710	286.8	

Poplar - Sawtimber International 1/4 Scale

		Number of Logs						
DBH	1-Log	2-Log	3-Log	4-Log	5-Log	# Trees	Volume	% of Total
18		10				10	2.5	44.1%
20		10				10	3.1	55.9%
Total		20				20	5.6	

Sawtimber Volume by Timber Type

Timber Type	# Trees	Volume	Avg BF/Tree	% of Total
Hardwood	20	5.6	281.0	1.9%
Pine	1,710	286.8	167.7	98.1%
Total	1,730	292.4	169.0	

Sawtimber Volume by DBH

DBH	# Trees	Volume	Avg BF/Tree	% of Total
10	70	2.7	39.3	0.9%
12	370	34.6	93.4	11.8%
14	880	150.6	171.2	51.5%
16	350	86.3	246.6	29.5%
18	50	15.0	300.8	5.1%
20	10	3.1	314.0	1.1%
Total	1,730	292.4	169.0	

Sawtimber Volume by Species

Species	# Trees	Volume	Avg BF/Tree	% of Total
Loblolly Pine	1,710	286.8	167.7	98.1%
Poplar	20	5.6	281.0	1.9%
Total	1,730	292.4	169.0	

Woolfolk Tract - Block B

Timber Marketing & Management, Inc.

Professional Forestry Consultants

P.O. Box 396

Chesterfield, VA 23832-0000

Phone: (804) 796-9622 • Fax: (804) 796-9693

Pulpwood Cruise: 10.0%

Sawtimber Cruise: 100.0%

Cruise Date: Wednesday, August 11, 2021
 Owner's Name: Woolfolk
 County/State: Louisa County, VA
 Acreage: 20+/-
 Cruise Type: Tree Count
 Harvest Type: Clear Cut
 Total BF/Acre: 11,025
 Pine Vol/Tree: 120.5
 Hardwood Vol/Tree: 134.7

Volume Legend:

- 1) Diameters shown in inches (DBH)
- 2) Logs measured in 16' increments
- 3) Sawtimber volumes are shown in thousands of board feet (MBF)
- 4) Volume scale used for each species of sawtimber is noted
- 5) Pulpwood volumes are shown in standard cords (128 cubic feet)

Comments:

Pulpwood Standard Cord

DBH	Wood Classification							
	Pine		Soft Hardwood		Hard Hardwood		Cedar	
# Trees	Volume	# Trees	Volume	# Trees	Volume	# Trees	Volume	
8	50	5						
10	170	28						
12	20	5						
14	10	4			10	3		
Total	250	42			10	3		

Beech - Sawtimber International 1/4 Scale

DBH	Number of Logs					# Trees	Volume	% of Total
	1-Log	2-Log	3-Log	4-Log	5-Log			
16	1					1	0.1	21.5%
18	1					1	0.1	27.6%
24	1					1	0.3	51.0%
Total	3					3	0.5	

Gum - Sawtimber International 1/4 Scale

DBH	Number of Logs					# Trees	Volume	% of Total
	1-Log	2-Log	3-Log	4-Log	5-Log			
12	1					1	0.1	40.3%
14	1					1	0.1	59.7%
Total	2					2	0.1	

Hickory - Sawtimber International 1/4 Scale

DBH	Number of Logs					# Trees	Volume	% of Total
	1-Log	2-Log	3-Log	4-Log	5-Log			
12	1					1	0.1	28.4%
14		1				1	0.1	71.6%
Total	1	1				2	0.2	

Loblolly Pine - Sawtimber International 1/4 Scale

DBH	Number of Logs					# Trees	Volume	% of Total
	1-Log	2-Log	3-Log	4-Log	5-Log			
10	178	114				292	13.1	6.0%
12	73	330	360			763	77.6	35.7%
14	55	237	246			538	83.7	38.5%
16	31	91	65			187	37.4	17.2%
18	10	8	4			22	4.8	2.2%
20	2	2				4	1.0	0.5%
Total	349	782	675			1,806	217.7	

Poplar - Sawtimber International 1/4 Scale

DBH	Number of Logs					# Trees	Volume	% of Total
	1-Log	2-Log	3-Log	4-Log	5-Log			
16	1					1	0.1	12.0%
18	1	1				2	0.4	42.1%
20			1			1	0.4	45.9%
Total	2	1	1			4	0.9	

Red Oak - Sawtimber International 1/4 Scale

DBH	Number of Logs					# Trees	Volume	% of Total
	1-Log	2-Log	3-Log	4-Log	5-Log			
16	2					2	0.2	100.0%
Total	2					2	0.2	

White Oak - Sawtimber International 1/4 Scale

DBH	Number of Logs					# Trees	Volume	% of Total
	1-Log	2-Log	3-Log	4-Log	5-Log			
12	4					4	0.2	27.5%
14	2					2	0.2	20.3%
16	1					1	0.1	13.7%
20		1				1	0.3	38.5%
Total	7	1				8	0.8	

Woolfolk Tract - Block B

Timber Marketing & Management, Inc.

Cruise Date: Wednesday, August 11, 2021
Owner's Name: Woolfolk
County/State: Louisa County, VA

Sawtimber Volume by Timber Type

<u>Timber Type</u>	<u># Trees</u>	<u>Volume</u>	<u>Avg BF/Tree</u>	<u>% of Total</u>
Hardwood	21	2.8	134.7	1.3%
Pine	1,806	217.7	120.5	98.7%
Total	1,827	220.5	120.7	

Sawtimber Volume by DBH

<u>DBH</u>	<u># Trees</u>	<u>Volume</u>	<u>Avg BF/Tree</u>	<u>% of Total</u>
10	292	13.1	45.0	6.0%
12	769	78.0	101.4	35.4%
14	542	84.1	155.2	38.2%
16	192	38.0	197.7	17.2%
18	25	5.3	212.2	2.4%
20	6	1.7	288.5	0.8%
24	1	0.3	266.0	0.1%
Total	1,827	220.5	120.7	

Sawtimber Volume by Species

<u>Species</u>	<u># Trees</u>	<u>Volume</u>	<u>Avg BF/Tree</u>	<u>% of Total</u>
Beech	3	0.5	174.0	0.2%
Gum	2	0.1	69.5	0.1%
Hickory	2	0.2	98.5	0.1%
Loblolly Pine	1,806	217.7	120.5	98.7%
Poplar	4	0.9	232.8	0.4%
Red Oak	2	0.2	112.0	0.1%
White Oak	8	0.8	102.0	0.4%
Total	1,827	220.5	120.7	

**WOOLFOLK TRACT
LOUISA COUNTY, VA**

Logging
Access Rd.
on Rt. 601
Wickham Rd.

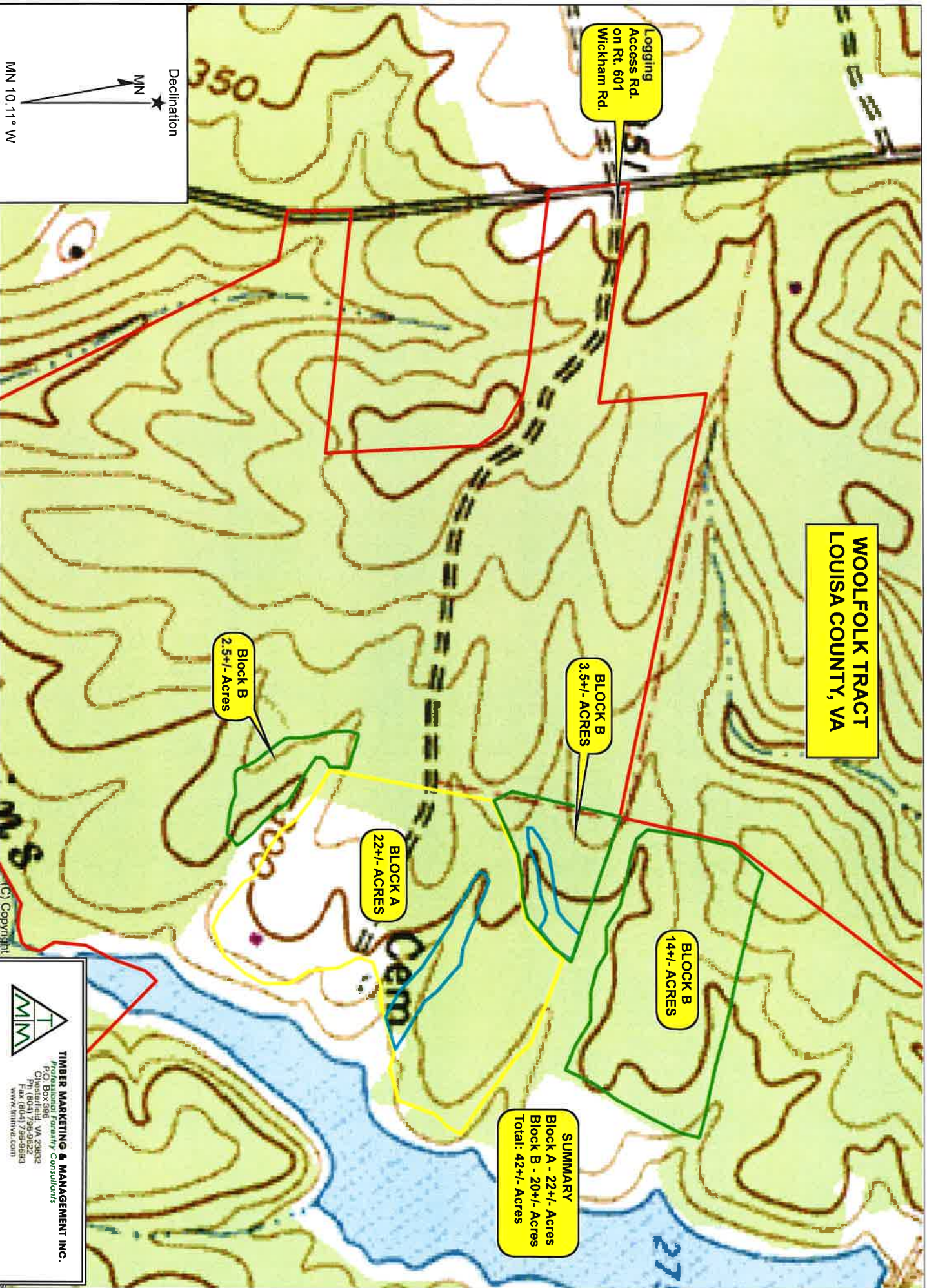
**BLOCK B
3.5+/- ACRES**

**BLOCK B
14+/- ACRES**

SUMMARY
Block A - 22+/- Acres
Block B - 20+/- Acres
Total: 42+/- Acres

**BLOCK A
22+/- ACRES**

**Block B
2.5+/- Acres**



Declination
MN
MN 10.11° W

Name: WOOLFOLK TRACT
Date: 09/22/21
Scale: 1 inch = 500 ft.

Location: 037° 53' 40.8157" N, 077° 47' 55.4837" W
42+/- Acre Clear-Cut



TIMBER MARKETING & MANAGEMENT INC.
Professional Forestry Consultants
Chesapeake, VA 23032
Ph (804) 798-9822
Fax (804) 798-9883
www.timtrva.com

**WOOLFOLK TRACT
LOUISA COUNTY, VA**

Logging
Access Rd.
on Rt. 601
Wickham Rd.

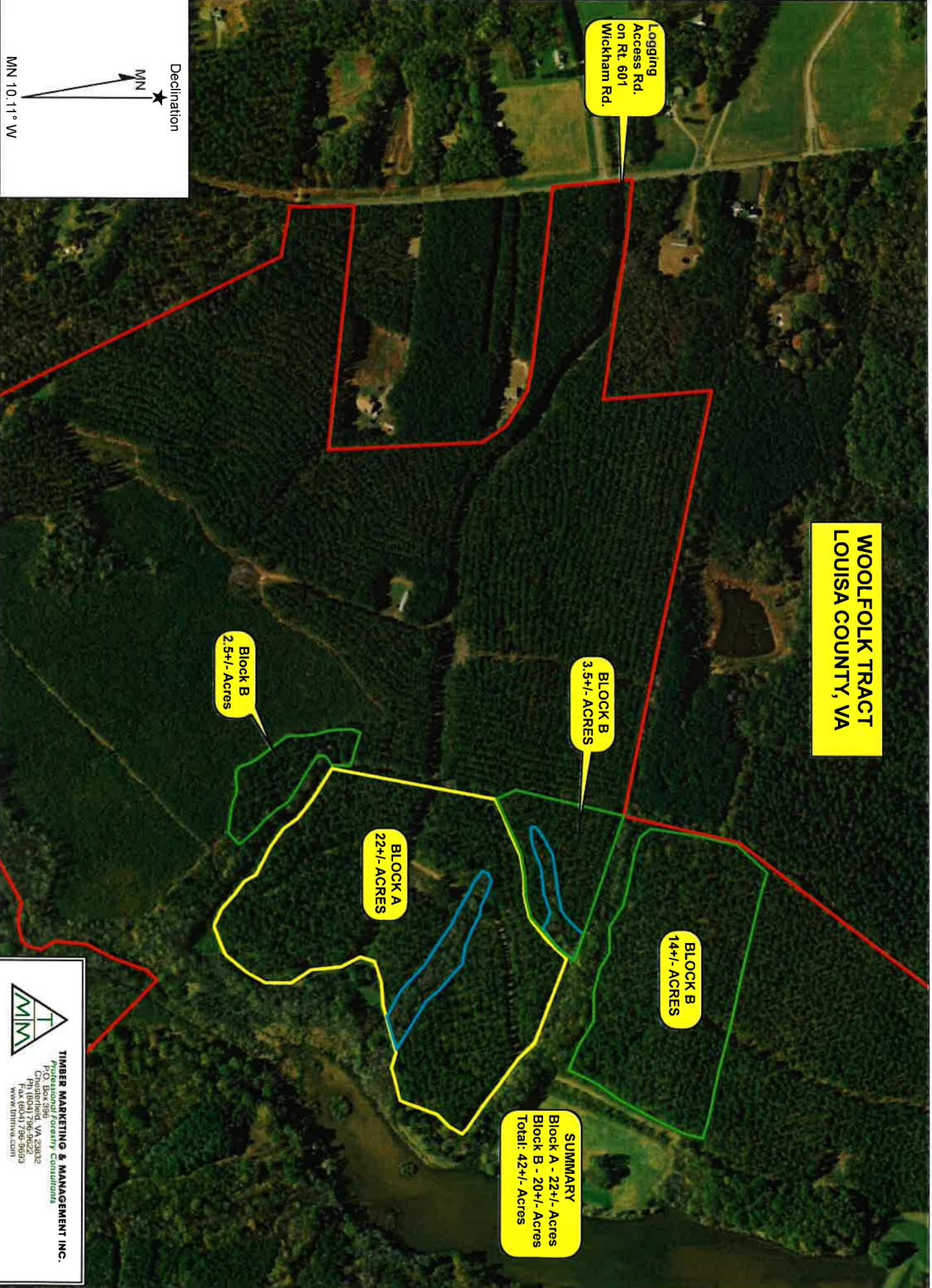
**BLOCK B
3.5+- ACRES**

**BLOCK B
14+- ACRES**

**BLOCK A
22+- ACRES**

**Block B
2.5+- Acres**

SUMMARY
Block A - 22+- Acres
Block B - 20+- Acres
Total: 42+- Acres



Declination
★
MN

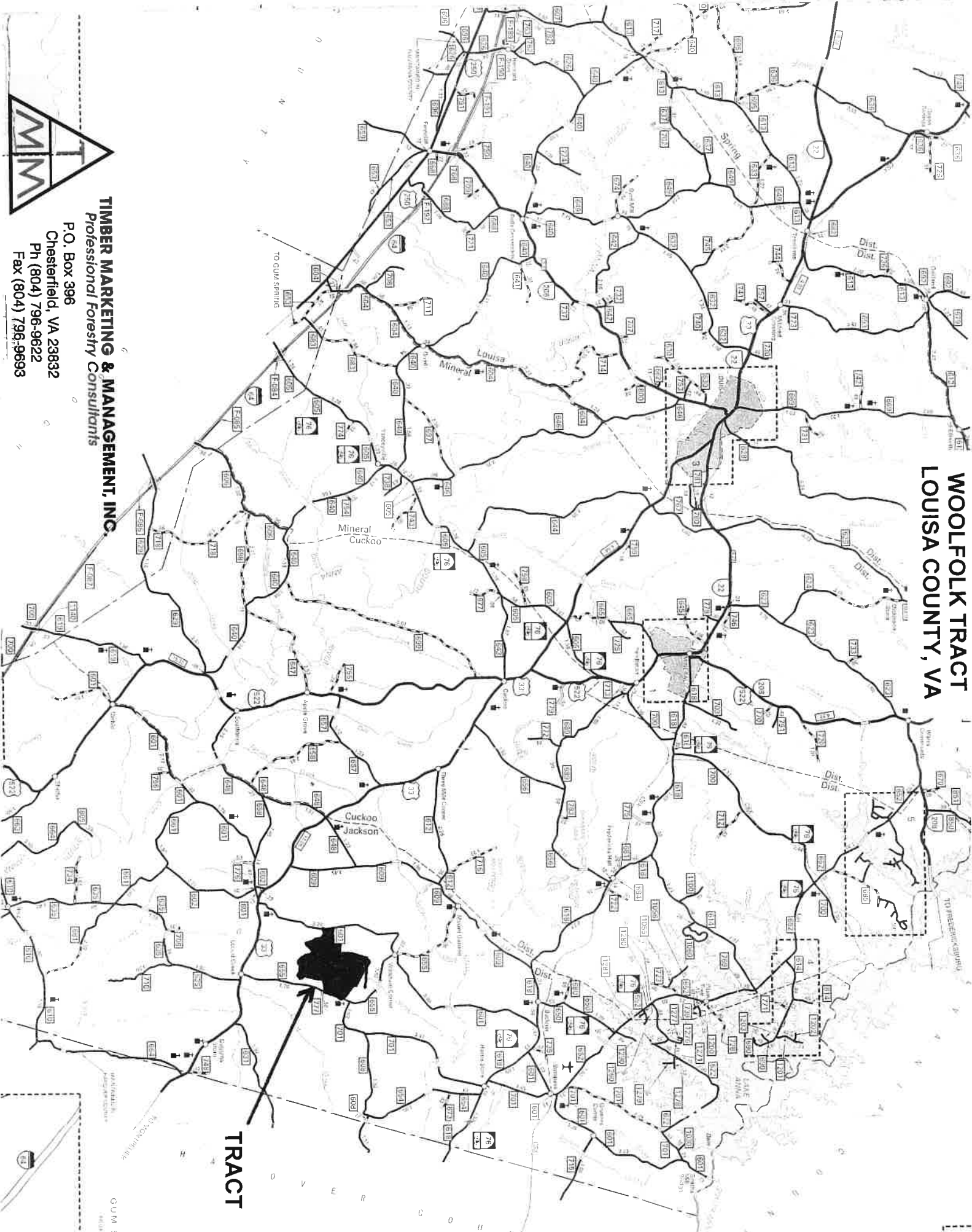
MN 10.11° W

Name: WOOLFOLK TRACT
Date: 09/22/21
Scale: 1 inch = 500 ft.

Location: 037° 53' 40.8157" N, 077° 47' 55.4837" W
42+- Acre Clear-Cut

**TIMBER MARKETING & MANAGEMENT INC.**
Professional Forestry Consultants
Charlottesville, VA 22902
Ph: (804) 796-9022
Fax: (804) 796-9093
www.timbrva.com

WOOLFOLK TRACT LOUISA COUNTY, VA



TRACT

TIMBER MARKETING & MANAGEMENT, INC.
Professional Forestry Consultants

P.O. Box 396
Chesterfield, VA 23832
Ph (804) 796-9622
Fax (804) 796-9693

