

TIMBER MARKETING & MANAGEMENT INC.

Professional Forestry Consultants

P.O. Box 396

Chesterfield, VA 23832

Ph (804) 796-9622

Fax (804) 796-9693

www.tmmva.com

Sale Date:	April 5, 2018
Time:	1:00 p.m.
Day:	Thursday
Total Vol./Acre:	6,216 B. F.
Hdwd. Vol/Tree:	392 B. F.

SELECT CUT SALE EXCELLENT QUALITY HARDWOOD

Having been employed by Andrew Wright we solicit bids on all blue marked timber to be selectively harvested on 75 acres in Loudon County, Virginia as shown on the attached map.

We have made a 100% count of the sawtimber-size trees. Our estimate of their volume is:

Sawtimber

Poplar	142,500	Maple	3,600
Chestnut Oak	122,200	Gum	3,400
White Oak	79,400	Beech	2,300
Hickory	60,200	Black Walnut	1,400
Northern Red Oak	20,200	Scarlet Oak	1,200
Red Oak	18,800	Elm	700
Ash	9,900	Black Cherry	400

466,200 Total B.F. Int 1/4" Scale

The above volumes are not guaranteed; however, care was taken in the field to assemble the above tables. You should note how your utilization practices may vary from the above and make any necessary adjustments.

VENEER

Included in the volumes are high quality trees that, from our review, will be of high enough quality that a veneer cut can be obtained. The veneer volume is estimated to be:

White Oak	2,495 BF Doyle Scale
Red Oak	203 BF Doyle Scale
Northern Red Oak	144 BF Doyle Scale

We have enclosed a detailed analysis of the veneer logs for your review. Please note that the veneer volumes are an aid and you should review the trees and make your own adjustments as you see necessary. The veneer trees have been individually numbered and painted with a ring of red paint around the entire tree.

Conditions

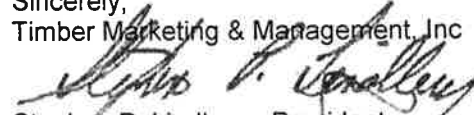
1. Blue marked timber only can be harvested from the sale area.
2. A period of time of 3 months will be allowed to cut and remove the timber.
3. Roads **must** be maintained and restored to their original condition upon completion of the logging. Any newly constructed roads and decks must be left in a graded condition and must be seeded upon completion of logging. Any newly constructed haul roads, skid roads and log decks and all logging operations must be in accordance with the guidelines set out in the **Best Management Practices Manual** of the Virginia Department of Forestry.
4. Access road to remove timber other than that shown on the attached map shall be agreed to by landowner and purchaser.
5. No tops or laps will be allowed to remain in the streams, fields, buffers or over cutting boundaries. They must be pulled back immediately.

6. Damages will be assessed for cutting or excessively scarring unmarked trees. Trees must be topped and limbed before skidding in the select cut area.
7. No logging will be permitted during excessively wet weather conditions as determined by Timber Marketing & Management, Inc. If logging is halted due to weather conditions, then an extension of time equal to the time lost will be granted.
8. A \$3,000.00 performance bond will be paid at closing and held by Timber Marketing & Management, Inc. to insure compliance with all BMP requirements, road maintenance and conditions of the Timber Purchase Contract.
9. The combination to the key pad is #5566

Only sealed bids will be accepted and owners reserve the right to reject any or all bids. BIDS SHOULD BE SUBMITTED PRIOR TO THE TIME OF BID OPENING AND CAN BE SUBMITTED VIA: Mail to Andrew Wright c/o Timber Marketing & Management, Inc. P. O. Box 396, Chesterfield, Virginia 23832 **OR** hand delivered to 9520 Ironbridge Road, Chesterfield, Virginia **OR** telephoned in to 804-796-9622 **OR** faxed to 804-796-9693 **OR** emailed to tmm4u@aol.com Bids must be made on a lump-sum basis and must be received at this address no later than Thursday April 5th, 2018 at 1:00 p.m.

There will not be any scheduled show trip of the tract; however, you may call and set an appointment or you may inspect the property at your own leisure.

Sincerely,
Timber Marketing & Management, Inc



Stephen P. Lindberg, President
804-796-9622 office
804-512-3578 mobile

Wright Tract

Timber Marketing & Management, Inc.

Professional Forestry Consultants

P.O. Box 396

Chesterfield, VA 23832-0000

Phone: (804) 796-9622 • Fax: (804) 796-9693

Sawtimber Cruise: 100.0%

Veneer Cruise: 100.0%

Cruise Date: Thursday, February 15, 2018

Owner's Name: Andrew Wright

County/State: Loudon County, VA

Acreage: 75+/-

Cruise Type: Tree Count

Harvest Type: Select Cut

Total BF/Acre: 6,216

Hardwood Vol/Tree: 392.4

Volume Legend:

- 1) Diameters shown in inches (DBH)
- 2) Logs measured in 16' increments
- 3) Sawtimber volumes are shown in thousands of board feet (MBF)
- 4) Volume scale used for each species of sawtimber is noted
- 5) Pulpwood volumes are shown in standard cords (128 cubic feet)

Comments:

Ash - Sawtimber

International 1/4 Scale

DBH	Number of Logs					# Trees	Volume	% of Total
	1-Log	2-Log	3-Log	4-Log	5-Log			
14	2	1				3	0.3	3.1%
16	1	5				6	1.1	10.8%
18	3	8	2			13	3.1	31.3%
20	1	5	2	1		9	3.1	31.6%
22		2	2			4	1.8	18.5%
24		1				1	0.5	4.8%
Total	7	22	6	1		36	9.9	

Beech - Sawtimber

International 1/4 Scale

DBH	Number of Logs					# Trees	Volume	% of Total
	1-Log	2-Log	3-Log	4-Log	5-Log			
30		1				1	0.8	32.7%
32		1				1	0.9	37.5%
38	1					1	0.7	29.9%
Total	1	2				3	2.3	

Black Cherry - Sawtimber

International 1/4 Scale

DBH	Number of Logs					# Trees	Volume	% of Total
	1-Log	2-Log	3-Log	4-Log	5-Log			
16	1					1	0.1	26.3%
20		1				1	0.3	73.7%
Total	1	1				2	0.4	

Black Walnut - Sawtimber

International 1/4 Scale

DBH	Number of Logs					# Trees	Volume	% of Total
	1-Log	2-Log	3-Log	4-Log	5-Log			
14		2				2	0.3	19.9%
16	1					1	0.1	7.9%
18	1	1				2	0.4	27.7%
20		2				2	0.6	44.4%
Total	2	5				7	1.4	

Chestnut Oak - Sawtimber

International 1/4 Scale

DBH	Number of Logs					# Trees	Volume	% of Total
	1-Log	2-Log	3-Log	4-Log	5-Log			
14		6				6	0.8	0.7%
16	1	21	2			24	4.6	3.8%
18	3	74	15			92	23.8	19.5%
20	5	65	30			100	34.1	27.9%
22	6	47	25	1		79	33.4	27.3%
24	3	22	5			30	14.3	11.7%
26		10	2			12	7.1	5.8%
28		4				4	2.6	2.1%
30		1				1	0.8	0.6%
36	1					1	0.6	0.5%
Total	19	250	79	1		349	122.2	

Elm - Sawtimber

International 1/4 Scale

DBH	Number of Logs					# Trees	Volume	% of Total
	1-Log	2-Log	3-Log	4-Log	5-Log			
18		1				1	0.2	33.4%
20	1	1				2	0.5	66.6%
Total	1	2				3	0.7	

Gum - Sawtimber

International 1/4 Scale

DBH	Number of Logs					# Trees	Volume	% of Total
	1-Log	2-Log	3-Log	4-Log	5-Log			
18		2				2	0.5	14.7%
20	1	2				3	0.8	24.1%
22		1				1	0.4	11.5%
24		1	1			2	1.1	33.1%
26		1				1	0.6	16.6%
Total	1	7	1			9	3.4	

Hickory - Sawtimber

International 1/4 Scale

DBH	Number of Logs					# Trees	Volume	% of Total
	1-Log	2-Log	3-Log	4-Log	5-Log			
16		10	7			17	3.7	6.1%
18		32	32	2		66	19.5	32.4%
20		26	16			42	15.0	24.9%
22	1	13	16	2		32	15.0	24.9%
24		4	2	2		8	4.7	7.8%
26		1	1			2	1.3	2.2%
30			1			1	1.1	1.7%
Total	1	86	75	6		168	60.2	

Wright Tract

Timber Marketing & Management, Inc.

Cruise Date: Thursday, February 15, 2018
 Owner's Name: Andrew Wright
 County/State: Loudon County, VA

Maple - Sawtimber International 1/4 Scale

Number of Logs								
DBH	1-Log	2-Log	3-Log	4-Log	5-Log	# Trees	Volume	% of Total
18		1				1	0.2	7.0%
20		3				3	0.9	26.5%
22		2				2	0.8	21.8%
24		2				2	0.9	26.4%
28		1				1	0.7	18.4%
Total		9				9	3.6	

Northern Red Oak - Sawtimber International 1/4 Scale

Number of Logs								
DBH	1-Log	2-Log	3-Log	4-Log	5-Log	# Trees	Volume	% of Total
16		1	3			4	1.0	4.7%
18		13	4			17	4.6	22.6%
20		11	5	1		17	6.1	30.2%
22		3	2	1		6	2.9	14.1%
24			5			5	3.2	15.9%
26		1				1	0.6	2.8%
28			1			1	0.9	4.5%
30			1			1	1.1	5.2%
Total		29	21	2		52	20.2	

Poplar - Sawtimber International 1/4 Scale

Number of Logs								
DBH	1-Log	2-Log	3-Log	4-Log	5-Log	# Trees	Volume	% of Total
16			11			11	2.8	2.0%
18		11	47	8		66	21.7	15.3%
20		10	46	14		70	30.0	21.0%
22	1	6	31	16		54	29.1	20.4%
24		3	24	12		39	26.1	18.3%
26		1	12	5		18	14.4	10.1%
28		1	4	2		7	6.5	4.5%
30			2	2		4	4.6	3.3%
32			1			1	1.2	0.9%
34			2			2	2.8	1.9%
38		1				1	1.3	0.9%
40			1			1	2.0	1.4%
Total	1	33	181	59		274	142.5	

Red Oak - Sawtimber International 1/4 Scale

Number of Logs								
DBH	1-Log	2-Log	3-Log	4-Log	5-Log	# Trees	Volume	% of Total
16	1	1				2	0.3	1.6%
18	3	14	3			20	4.9	26.2%
20	2	6	3			11	3.5	18.8%
22		2	1			3	1.3	6.9%
24		2	3			5	2.9	15.3%
26	1					1	0.3	1.7%
28		1	1			2	1.6	8.3%
30		2	1			3	2.6	13.7%
40		1				1	1.4	7.5%
Total	7	29	12			48	18.8	

Scarlet Oak - Sawtimber International 1/4 Scale

Number of Logs								
DBH	1-Log	2-Log	3-Log	4-Log	5-Log	# Trees	Volume	% of Total
16		1				1	0.2	16.0%
18	1					1	0.1	12.1%
22		1				1	0.4	32.5%
24		1				1	0.5	39.4%
Total	1	3				4	1.2	

White Oak - Sawtimber International 1/4 Scale

Number of Logs								
DBH	1-Log	2-Log	3-Log	4-Log	5-Log	# Trees	Volume	% of Total
12	1					1	0.1	0.1%
16		8				8	1.5	1.9%
18	6	59	6			71	17.5	22.1%
20	6	49	8			63	19.9	25.0%
22		28	9	1		38	16.2	20.4%
24		22	6			28	14.2	17.9%
26	1	8	3			12	7.1	8.9%
28		1	1			2	1.6	2.0%
34			1			1	1.4	1.7%
Total	14	175	34	1		224	79.4	

Wright Tract

Timber Marketing & Management, Inc.

Cruise Date: Thursday, February 15, 2018
 Owner's Name: Andrew Wright
 County/State: Loudoun County, VA

Sawtimber Volume by Timber Type

Timber Type	# Trees	Volume	Avg BF/Tree	% of Total
Hardwood	1,188	466.2	392.4	100.0%
Total	1,188	466.2	392.4	

Sawtimber Volume by DBH

DBH	# Trees	Volume	Avg BF/Tree	% of Total
12	1	0.1	56.0	0.0%
14	11	1.4	130.5	0.3%
16	75	15.4	205.0	3.3%
18	352	96.7	274.6	20.7%
20	323	114.9	355.7	24.6%
22	220	101.2	460.0	21.7%
24	121	68.4	565.7	14.7%
26	47	31.4	667.4	6.7%
28	17	13.8	808.9	2.9%
30	11	10.8	984.2	2.3%
32	2	2.1	1,041.5	0.4%
34	3	4.1	1,383.0	0.9%
36	1	0.6	620.0	0.1%
38	2	1.9	974.5	0.4%
40	2	3.4	1,690.0	0.7%
Total	1,188	466.2	392.4	

Sawtimber Volume by Species

Species	# Trees	Volume	Avg BF/Tree	% of Total
Ash	36	9.9	274.3	2.1%
Beech	3	2.3	773.7	0.5%
Black Cherry	2	0.4	213.0	0.1%
Black Walnut	7	1.4	202.0	0.3%
Chestnut Oak	349	122.2	350.2	26.2%
Elm	3	0.7	247.7	0.2%
Gum	9	3.4	373.7	0.7%
Hickory	168	60.2	358.6	12.9%
Maple	9	3.6	395.1	0.8%
Northern Red Oak	52	20.2	388.7	4.3%
Poplar	274	142.5	520.1	30.6%
Red Oak	48	18.8	390.7	4.0%
Scarlet Oak	4	1.2	297.5	0.3%
White Oak	224	79.4	354.5	17.0%
Total	1,188	466.2	392.4	

Northern Red Oak - Veneer

Doyle (Butt Log Scale)

DBH	Butt Log Length								# Logs	Volume	% of Total
	8'	10'	12'	14'	16'	18'	20'	22'			
20					1				1	144	100.0%
Total					1				1	144	

Red Oak - Veneer

Doyle (Butt Log Scale)

DBH	Butt Log Length								# Logs	Volume	% of Total
	8'	10'	12'	14'	16'	18'	20'	22'			
20		1	1						2	203	100.0%
Total		1	1						2	203	

White Oak - Veneer

Doyle (Butt Log Scale)

DBH	Butt Log Length								# Logs	Volume	% of Total
	8'	10'	12'	14'	16'	18'	20'	22'			
18		1							1	58	2.3%
20	1	1	1		1	1			5	591	23.7%
22		2	1		1		1		5	770	30.9%
24		1			2				3	622	24.9%
26			1						1	222	8.9%
28		1							1	232	9.3%
Total	1	6	3		4	1	1		16	2,495	

Veneer Tag List

Tag	Species	DBH	Butt Log Length
A1	Northern Red Oak	20	16'
A2	White Oak	20	16'
A3	White Oak	22	16'
A4	White Oak	18	10'
A5	Red Oak	20	12'
A6	White Oak	22	12'
M1	Red Oak	20	10'
M2	White Oak	20	10'
M3	White Oak	24	16'
M4	White Oak	20	8'
M5	White Oak	20	12'
S1	White Oak	24	10'
S2	White Oak	22	10'
S3	White Oak	22	10'
S4	White Oak	24	16'
S5	White Oak	22	20'
S6	White Oak	26	12'
S7	White Oak	20	18'
S8	White Oak	28	10'

Veneer Volume by DBH

DBH	# Trees	Volume	Avg BF/Log	% of Total
18	1	58	58.0	2.0%
20	8	938	117.3	33.0%

Wright Tract

Timber Marketing & Management, Inc.

Cruise Date: Thursday, February 15, 2018
Owner's Name: Andrew Wright
County/State: Loudon County, VA

22	5	770	154.0	27.1%
24	3	622	207.3	21.9%
26	1	222	222.0	7.8%
28	1	232	232.0	8.2%
Total	19	2,842	149.6	

Veneer Volume by Species

Species	# Trees	Volume	Avg BF/Log	% of Total
Northern Red Oak	1	144	144.0	5.1%
Red Oak	2	203	101.5	7.1%
White Oak	16	2,495	155.9	87.8%
Total	19	2,842	149.6	

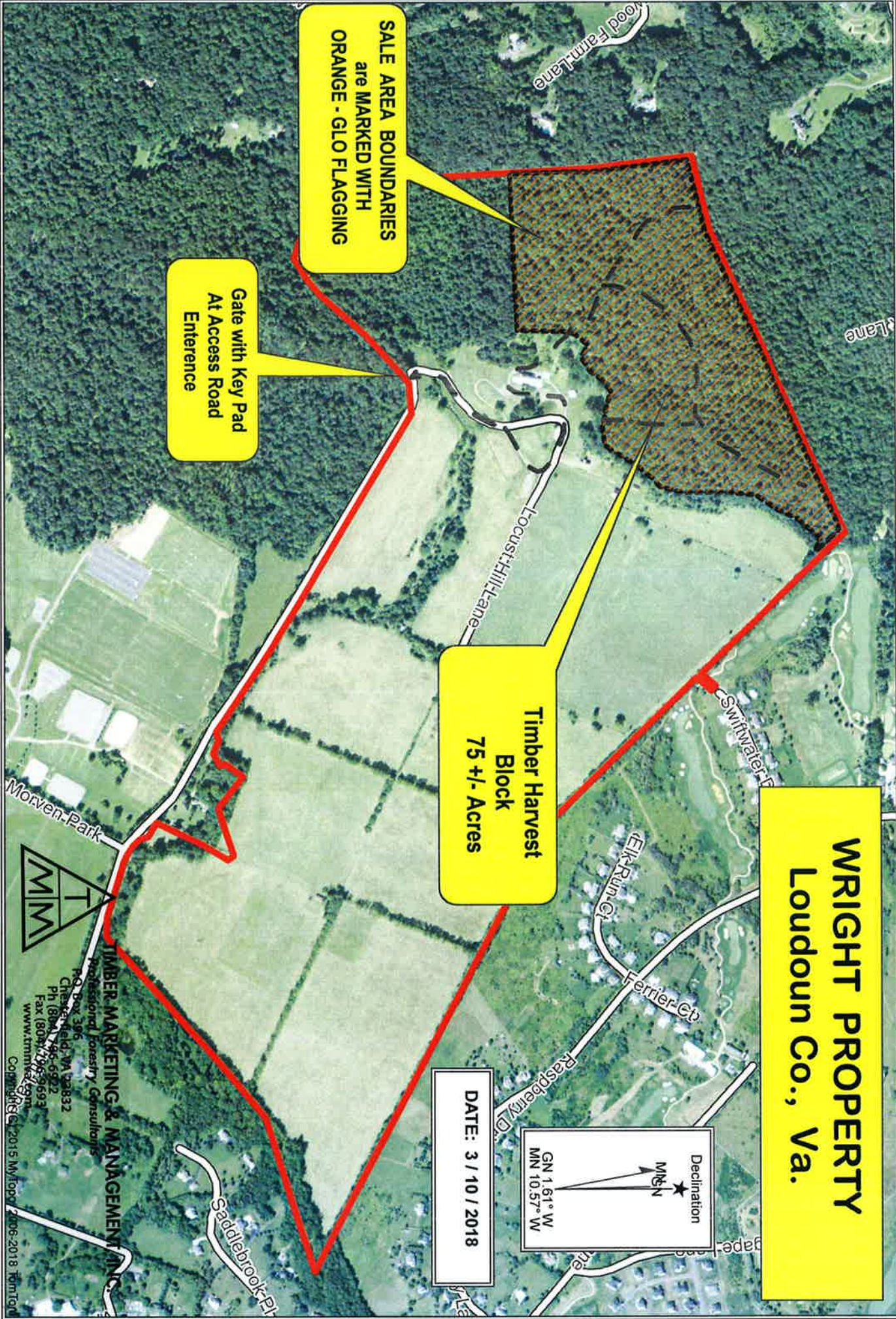
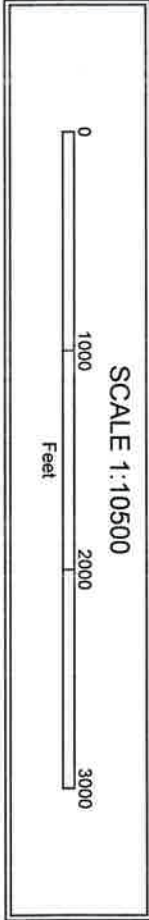
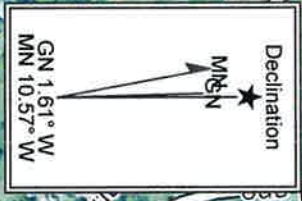
WRIGHT PROPERTY Loudoun Co., Va.

**Timber Harvest
Block
75 +/- Acres**

**SALE AREA BOUNDARIES
are MARKED WITH
ORANGE - GLO FLAGGING**

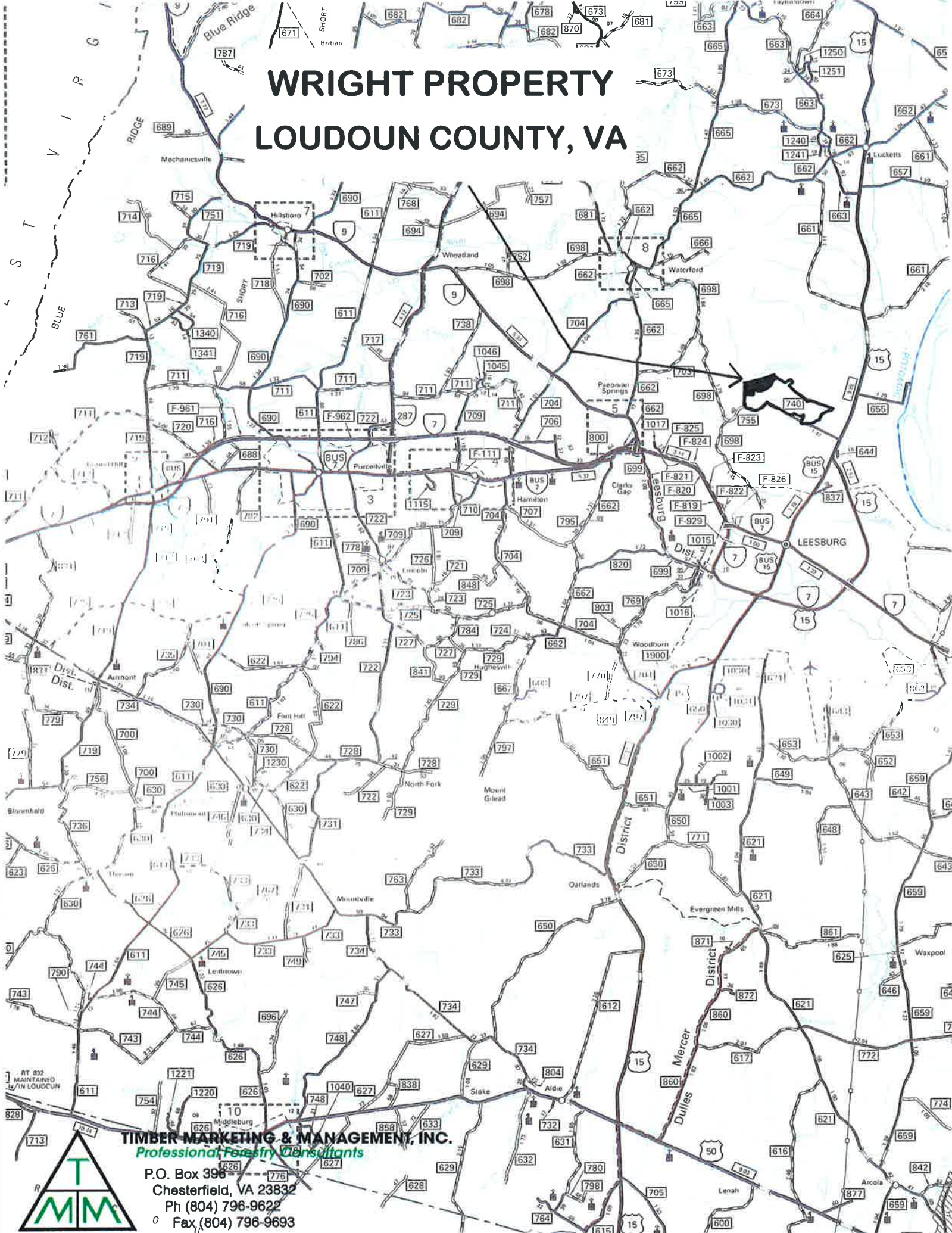
**Gate with Key Pad
At Access Road
Entrance**

DATE: 3 / 10 / 2018



TIMBER MARKETING & MANAGEMENT INC.
Professional Forestry Consultants
P.O. Box 396
Chesapeake, VA 23832
Ph (804) 795-6922
Fax (804) 795-9693
www.tmmva.com
Copyright © 2015 M/Topp / 2006-2018 TMM

WRIGHT PROPERTY LOUDOUN COUNTY, VA



TIMBER-MARKETING & MANAGEMENT, INC.
Professional Forestry Consultants

P.O. Box 396
Chesterfield, VA 23832
Ph (804) 796-9622
Fax (804) 796-9693

