



TIMBER MARKETING & MANAGEMENT INC.
Professional Forestry Consultants
 P.O. Box 396
 Chesterfield, VA 23832
 Ph (804) 796-9622
 Fax (804) 796-9693
 www.tmmva.com

Sale Date:	January 11, 2018
Time:	11:00 a. m.
Day:	Thursday
Total Vol./Acre:	13,191 B. F.
Pine Vol/Tree:	152 B. F.
Hdwd. Vol/Tree:	297 B. F.

**CLEAR- CUT SALE
 EXCELLENT ACCESS**

Having been employed by **New Ventures LLC** we solicit bids on all merchantable timber on **9 +/-** acres shown on the attached map located in **Goochland County, Virginia**.

We have cruised the pulpwood trees (10% plot cruise) to be harvested. Our estimate of their volume is:

<u>Pulpwood</u>	<u>Cords</u>	<u>Tons</u>
Pine	7	18
Soft Hardwood	14	36
Hard Hardwood	7	18
TOTAL	28	73

We have made a 100% count of the sawtimber-size trees. Our estimate of their volume is:

<u>Sawtimber</u>			
Poplar	37,600	Loblolly/Shortleaf Pine	4,400
White Oak	31,500	Hickory	800
Red Oak	16,100	Maple	600
Gum	15,200	White Pine	400
Virginia Pine	11,700	Beech	300
			118,600 Total B.F. Int 1/4" Scale

The above volumes are not guaranteed; however, care was taken in the field to assemble the above tables. You should note how your utilization practices may vary from the above and make any necessary adjustments.

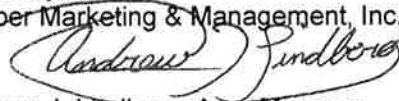
Conditions

1. A period of time of **12 months** will be allowed to cut and remove the timber.
2. Roads **must** be maintained and restored to their original condition upon completion of the logging. Any newly constructed roads and decks must be left in a graded condition and must be seeded upon completion of logging. Any newly constructed haul roads, skid roads and log decks and all logging operations must be in accordance with the guidelines set out in the **Best Management Practices Manual** of the Virginia Department of Forestry.
3. No tops or laps will be allowed to remain in the streams, fields, buffers or over cutting boundaries. They must be pulled back immediately.
4. Leave individually flagged trees in the harvest area.
5. Only the blue marked trees are to be cut from Streamside Management Zones.
6. No logging will be permitted during excessively wet weather conditions as determined by Timber Marketing & Management, Inc. If logging is halted due to weather conditions, then an extension of time equal to the time lost will be granted.
7. A \$1,000.00 performance bond will be paid at closing and held by Timber Marketing & Management, Inc. to insure compliance with all BMP requirements, road maintenance and conditions of the Timber Purchase Contract.

Only sealed bids will be accepted and owners reserve the right to reject any or all bids. BIDS SHOULD BE SUBMITTED PRIOR TO THE TIME OF BID OPENING AND CAN BE SUBMITTED VIA: Mail to: New Ventures LLC c/o Timber Marketing & Management, Inc. P. O. Box 396, Chesterfield, Virginia 23832 **OR** hand delivered to 9520 Ironbridge Road, Chesterfield, Virginia **OR** telephoned in to 804-796-9622 **OR** faxed to 804-796-9693 **OR** emailed to tmm4u@aol.com Bids must be made on a lump-sum basis and must be received at this address no later than **Thursday January 11, 2018 at 11:00 a.m.**

There will not be any scheduled show trip of the tract; however, you may call and set an appointment or you may inspect the property at your own leisure.

Sincerely,
Timber Marketing & Management, Inc.

A handwritten signature in cursive script that reads "Andrew J. Lindberg". The signature is written in black ink and is positioned over the printed name of the sender.

Andrew J. Lindberg, Area Manager
804-796-9622 office
804-338-8436 mobile

New Ventures LLC - Three Chopt Rd Tract

Timber Marketing & Management, Inc.

Professional Forestry Consultants

P.O. Box 396

Chesterfield, VA 23832-0000

Phone: (804) 796-9622 • Fax: (804) 796-9693

Pulpwood Cruise: 10.0%

Sawtimber Cruise: 100.0%

Cruise Date: Monday, October 09, 2017

Owner's Name: New Ventures LLC

County/State: Goochland County, VA

Acreage: 9+/-

Cruise Type: Tree Count

Harvest Type: Clear Cut

Total BF/Acre: 13,191

Pine Vol/Tree: 151.5

Hardwood Vol/Tree: 297.1

Volume Legend:

- 1) Diameters shown in inches (DBH)
- 2) Logs measured in 16' increments
- 3) Sawtimber volumes are shown in thousands of board feet (MBF)
- 4) Volume scale used for each species of sawtimber is noted
- 5) Pulpwood volumes are shown in standard cords (128 cubic feet)

Comments:

Pulpwood Standard Cord

DBH	Wood Classification							
	Pine		Soft Hardwood		Hard Hardwood		Cedar	
# Trees	Volume	# Trees	Volume	# Trees	Volume	# Trees	Volume	
6	10	0	90	4	50	2		
8	30	3	100	8	10	1		
10	20	3	20	3	20	3		
12					10	2		
Total	60	7	210	14	90	7		

Beech - Sawtimber International 1/4 Scale

DBH	Number of Logs							
	1-Log	2-Log	3-Log	4-Log	5-Log	# Trees	Volume	% of Total
12	2					2	0.1	36.5%
14	1					1	0.1	27.0%
16	1					1	0.1	36.5%
Total	4					4	0.3	

Gum - Sawtimber International 1/4 Scale

DBH	Number of Logs							
	1-Log	2-Log	3-Log	4-Log	5-Log	# Trees	Volume	% of Total
12	4					4	0.2	1.5%
14	1	8	4			13	2.0	12.8%
16		13	4			17	3.5	22.9%
18		4	6			10	3.0	19.7%
20		7	1			8	2.6	17.2%
22		2	6			8	3.9	25.9%
Total	5	34	21			60	15.2	

Hickory - Sawtimber International 1/4 Scale

DBH	Number of Logs							
	1-Log	2-Log	3-Log	4-Log	5-Log	# Trees	Volume	% of Total
12	1					1	0.1	6.7%
20		1				1	0.3	37.4%
24		1				1	0.5	55.9%
Total	1	2				3	0.8	

Loblolly/Shortleaf Pine - Sawtimber International 1/4 Scale

DBH	Number of Logs					# Trees	Volume	% of Total
	1-Log	2-Log	3-Log	4-Log	5-Log			
12		2	2			4	0.4	9.6%
14		1	8			9	1.6	36.9%
16		1	3	1		5	1.3	28.6%
18		1	1			2	0.6	13.2%
20				1		1	0.5	11.6%
Total		5	14	2		21	4.4	

Maple - Sawtimber International 1/4 Scale

DBH	Number of Logs					# Trees	Volume	% of Total
	1-Log	2-Log	3-Log	4-Log	5-Log			
14	2					2	0.2	27.5%
16	1					1	0.1	18.6%
18	1					1	0.1	23.9%
20	1					1	0.2	30.0%
Total	5					5	0.6	

Poplar - Sawtimber International 1/4 Scale

DBH	Number of Logs					# Trees	Volume	% of Total
	1-Log	2-Log	3-Log	4-Log	5-Log			
12	10					10	0.6	1.5%
14		7	2			9	1.4	3.6%
16		5	10			15	3.5	9.3%
18		1	11	2		14	4.7	12.6%
20		1	13	1		15	6.4	16.9%
22			17	1		18	9.6	25.5%
24			11			11	7.1	18.8%
26		1	5			6	4.4	11.7%
Total	10	15	69	4		98	37.6	

New Ventures LLC - Three Chopt Rd Tract

Timber Marketing & Management, Inc.

Cruise Date: Monday, October 09, 2017
 Owner's Name: New Ventures LLC
 County/State: Goochland County, VA

Red Oak - Sawtimber International 1/4 Scale

DBH	Number of Logs					# Trees	Volume	% of Total
	1-Log	2-Log	3-Log	4-Log	5-Log			
12	1					1	0.1	0.3%
14	4	4				8	0.9	5.6%
16	1	7	4			12	2.5	15.4%
18	3	4	4			11	2.8	17.2%
20		5	4			9	3.3	20.4%
22		6	2			8	3.4	21.0%
24		1	2			3	1.8	10.9%
26		1				1	0.6	3.5%
28				1		1	0.9	5.6%
Total	9	28	17			54	16.1	

Virginia Pine - Sawtimber International 1/4 Scale

DBH	Number of Logs					# Trees	Volume	% of Total
	1-Log	2-Log	3-Log	4-Log	5-Log			
10	12					12	0.4	3.7%
12	10	14	2			26	2.1	17.9%
14	4	17	8			29	4.2	36.1%
16	1	6	4			11	2.3	19.5%
18		4	2			6	1.7	14.3%
20	1		1			2	0.6	5.2%
22		1				1	0.4	3.3%
Total	28	42	17			87	11.7	

White Oak - Sawtimber International 1/4 Scale

DBH	Number of Logs					# Trees	Volume	% of Total
	1-Log	2-Log	3-Log	4-Log	5-Log			
12	12					12	0.7	2.1%
14	5	13				18	2.2	7.1%
16	4	26	5			35	6.7	21.2%
18	1	13	6			20	5.4	17.1%
20		9	5			14	5.0	15.7%
22		5	3			8	3.5	11.2%
24		3	6			9	5.3	16.7%
26		2				2	1.1	3.5%
28				1		1	0.9	2.9%
30		1				1	0.8	2.4%
Total	22	72	28			120	31.5	

White Pine - Sawtimber International 1/4 Scale

DBH	Number of Logs					# Trees	Volume	% of Total
	1-Log	2-Log	3-Log	4-Log	5-Log			
20			1			1	0.4	100.0%
Total			1			1	0.4	

Sawtimber Volume by Timber Type

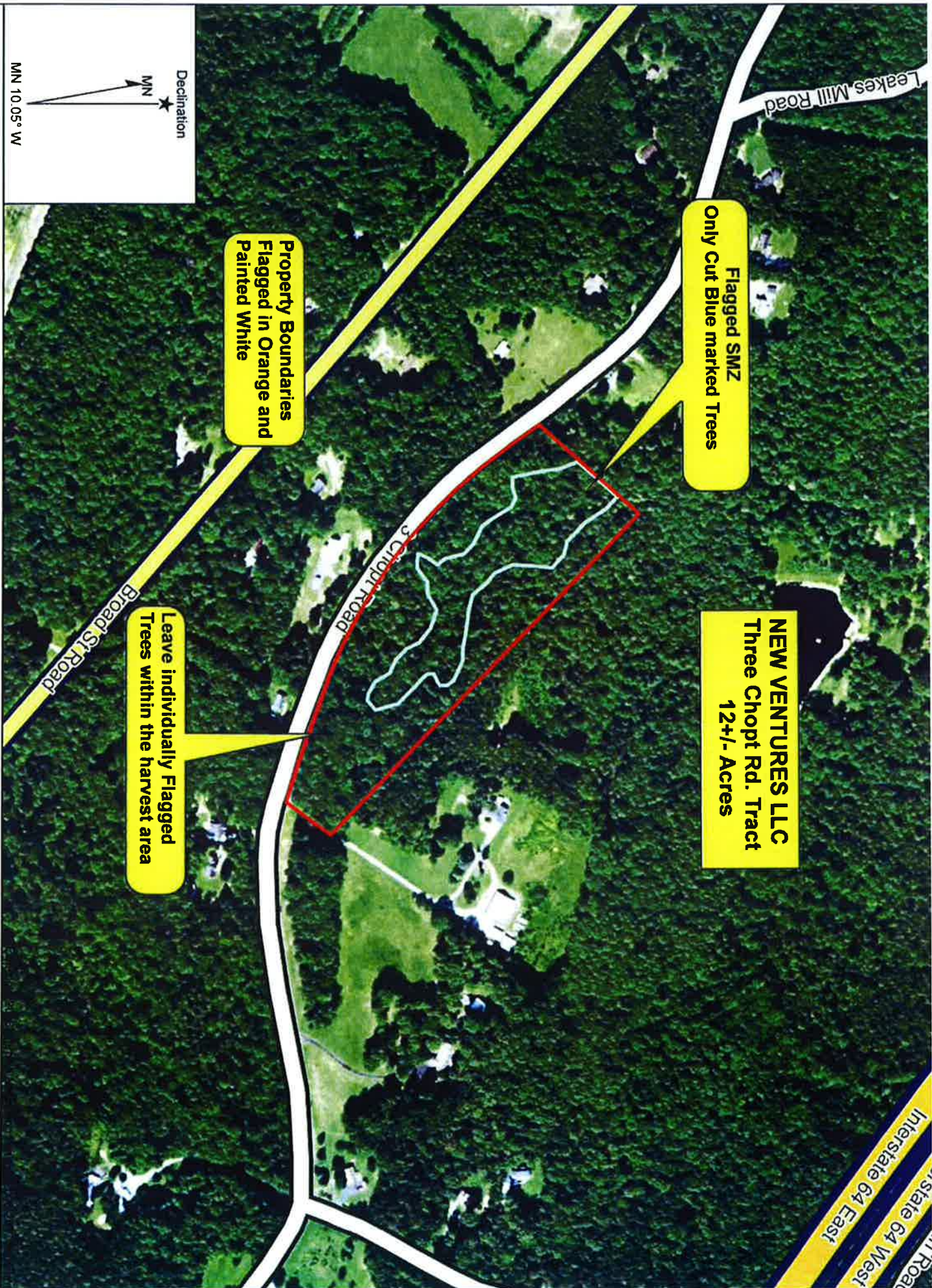
Timber Type	# Trees	Volume	Avg BF/Tree	% of Total
Hardwood	344	102.2	297.1	86.1%
Pine	109	16.5	151.5	13.9%
Total	453	118.7	262.1	

Sawtimber Volume by DBH

DBH	# Trees	Volume	Avg BF/Tree	% of Total
10	12	0.4	36.0	0.4%
12	60	4.2	69.9	3.5%
14	89	12.6	141.0	10.6%
16	97	19.9	205.2	16.8%
18	64	18.3	285.9	15.4%
20	52	19.3	370.8	16.2%
22	43	20.8	484.7	17.6%
24	24	14.6	607.5	12.3%
26	9	6.1	674.1	5.1%
28	2	1.8	904.0	1.5%
30	1	0.8	758.0	0.6%
Total	453	118.7	262.1	

Sawtimber Volume by Species

Species	# Trees	Volume	Avg BF/Tree	% of Total
Beech	4	0.3	76.8	0.3%
Gum	60	15.2	254.1	12.8%
Hickory	3	0.8	279.7	0.7%
Loblolly/Shortleaf Pine	21	4.4	210.1	3.7%
Maple	5	0.6	120.6	0.5%
Poplar	98	37.6	384.1	31.7%
Red Oak	54	16.1	297.4	13.5%
Virginia Pine	87	11.7	134.2	9.8%
White Oak	120	31.5	262.5	26.5%
White Pine	1	0.4	427.0	0.4%
Total	453	118.7	262.1	

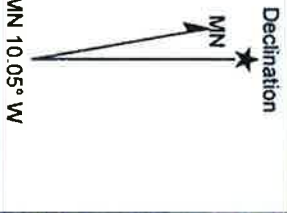


**Flagged SMZ
Only Cut Blue marked Trees**

**NEW VENTURES LLC
Three Chopt Rd. Tract
12+/- Acres**

**Property Boundaries
Flagged in Orange and
Painted White**

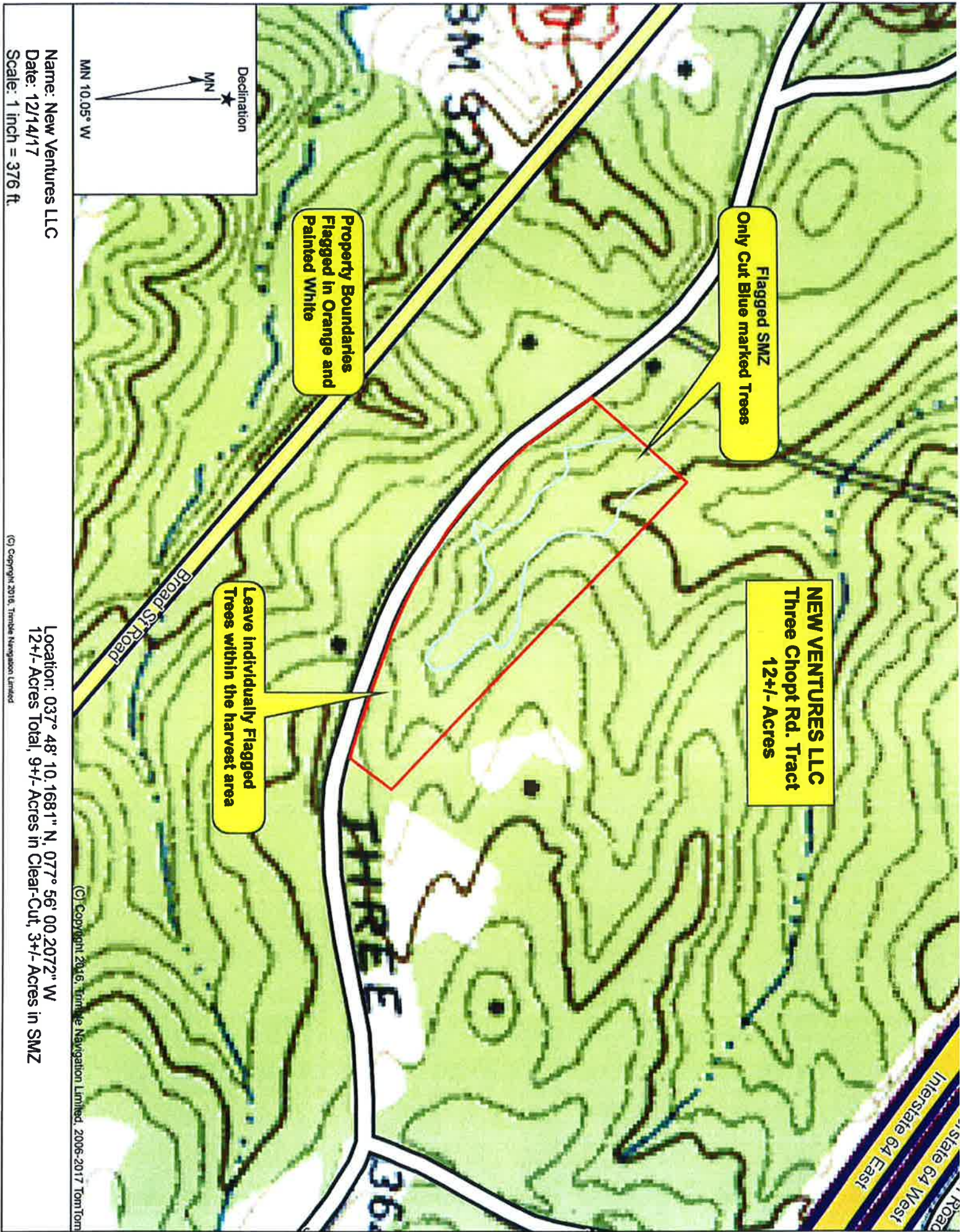
**Leave Individually Flagged
Trees within the harvest area**



Name: SOUTH ANNA SE, VA
Date: 12/14/17
Scale: 1 inch = 376 ft.

Location: 037° 48' 10.3341" N, 077° 56' 00.5013" W
12+/- Acres Total, 9+/- Acres in Clear-Cut, 3+/- Acres in SMZ

(c) Copyright 2016, Trimble Navigation Limited



Flagged SMZ
Only Cut Blue marked Trees

NEW VENTURES LLC
Three Chopt Rd. Tract
12+/- Acres

Property Boundaries
Flagged in Orange and
Painted White

Leave Individually Flagged
Trees within the harvest area

Declination
MN
MN 10.05° W

Name: New Ventures LLC
Date: 12/14/17
Scale: 1 inch = 376 ft.

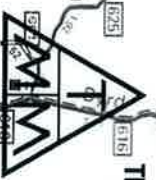
Location: 037° 48' 10.1681" N, 077° 56' 00.2072" W
12+/- Acres Total, 9+/- Acres in Clear-Cut, 3+/- Acres in SMZ

© Copyright 2016, Trimble Navigation Limited, 2006-2017 TomTom

Interstate 64 East
Interstate 64 West
Road

NEW VENTURES LLC Goochland County

TRACT



TIMBER MARKETING & MANAGEMENT, INC.
Professional Forestry Consultants
P.O. Box 396
Chesterfield, VA 23832
Ph (804) 796-6922
Fax (804) 796-9683
www.tmmva.com

